

## LADY ANNA — SUNSEEKER



**Судостроитель:** [SUNSEEKER](#)

**Год постройки:** 2016

**Модель:** Моторная яхта

**Цена:** **ЦЕНА ЯХТЫ ПО ЗАПРОСУ**

**Местонахождение:** Cyprus

**Длина общая:** 86' 4" (26.30m)

**Ширина:** 21' 3" (6.47m)

**Крейс. скорость:** 20 Kts. (23 MPH)

**Макс. скорость:** 30 Kts. (35 MPH)

Купить **LADY ANNA — SUNSEEKER** а также выбрать подходящую вам яхту из нашего каталога яхт вам поможет опытный яхтенный брокер Андрей Шестаков. На сегодняшний день компания **Shestakov Yacht Sales Inc.** имеет большое количество яхт в собственном списке продаж, а также тесно сотрудничает со всеми крупными яхтенными производителями по всему миру.

Для того чтобы купить яхту **LADY ANNA — SUNSEEKER** а также проконсультироваться по любому вопросу связанному с покупкой, продажей, чартером яхт позвоните по телефону **+7(918)465-66-44**.

# ОГЛАВЛЕНИЕ

ОГЛАВЛЕНИЕ	2
ХАРАКТЕРИСТИКИ	6
Обзор	6
Основная информация	6
Размеры	6
Скорость, вместимость и масса	6
Размещение	7
Корпус и палуба	7
Информация о двигателе	7
ПОДРОБНОЕ ОПИСАНИЕ	8
OPTIONAL EXTRAS	8
CONSTRUCTION	8
FLYBRIDGE DECK	8
FLYBRIDGE HELM	9
DECK	9
AFT COCKPIT	10
BATHING PLATFORM	10
SALOON AND DINING	10
GALLEY	11
MAIN HELM CONSOLE AND OBSERVATION AREA	11
FORWARD VIP STATEROOM	12
FORWARD VIP WALK-IN WARDROBE	12
FORWARD VIP EN SUITE	12
MASTER STATEROOM	12
MASTER WALK-IN WARDROBE	13
MASTER EN SUITE	13
STARBOARD GUEST CABIN	13
STARBOARD GUEST EN SUITE/ DAY HEAD	13

STERN CREW LOBBY	14
PORT GUEST EN SUITE	14
PORT AFT CREW CABIN	14
PORT FORWARD CREW CABIN	14
CREW TOILET/ SHOWER	14
ENGINE COMPARTMENTS AND ANCILLARIES	15
ELECTRICAL SYSTEM	15
UNDERWATER GEAR	15
SYSTEMS	15
COVERS	16
Исключения	16
Отказ от ответственности	16
<b>ФОТОГРАФИИ</b>	<b>18</b>
LadyAnna001	18
LadyAnna005	18
LadyAnna008	18
LadyAnna009	18
LadyAnna011	18
LadyAnna012	18
LadyAnna015	19
LadyAnna017	19
LadyAnna019	19
LadyAnna020	19
LadyAnna021	19
LadyAnna022	19
LadyAnna023	20
LadyAnna024	20
LadyAnna025	20
LadyAnna026	20

---

LadyAnna028	20
LadyAnna030	20
LadyAnna031	21
LadyAnna032	21
LadyAnna035	21
LadyAnna036	21
LadyAnna037	21
LadyAnna038	21
LadyAnna040	22
LadyAnna041	22
LadyAnna042	22
LadyAnna043	22
LadyAnna045	22
LadyAnna046	22
LadyAnna047	23
LadyAnna048	23
LadyAnna049	23
Sunseeker 86 19	23
Sunseeker 86 24	23
Sunseeker 86 21	23
Sunseeker 86 a	24
Sunseeker 86 b	24
Sunseeker 86 d	24
Sunseeker 86 fly lounge	24
Sunseeker 86 flybridge	24
Sunseeker 86 nose	24
SUN_10545170_86Y_GA_flybridge-1500x398	25
SUN_10545170_86Y_GA_main_deck-1500x398	25
SUN_10545170_86Y_GA_lower_deck-1500x368	25

---

---

КОНТАКТЫ	26
-----	-----
Контактная информация	26
-----	-----
Телефоны	26
-----	-----
Время работы	26
-----	-----
Адрес	26
-----	-----

# ХАРАКТЕРИСТИКИ

## Обзор

### HIGHLIGHTS: VAT PAID - FIN STABILISERS - EXTENSIVE LIST OF OPTIONS

A seductive combination of style and exclusivity, the Sunseeker 86 Yacht delivers on all fronts. From bow to stern, every detail has been crafted to perfection. Inside, the main saloon is a large welcoming space; full of natural light, hand-finished furnishings, and state-of-the-art technology. The outstanding level of design continues below the deck, where all cabins offer privacy and extravagance in equal measure.

## Основная информация

Тип судна: Моторная яхта	Модельный год: 2016
Год постройки: 2016	Страна: Cyprus
Открытая палуба мостика: Да	Кубрик: Да

## Размеры

Длина общая: 86' 4" (26.30m)	Ширина: 21' 3" (6.47m)
------------------------------	------------------------

## Скорость, вместимость и масса

Крейс. скорость: 20 Kts. (23 MPH)	Дальность на крейсерской скорости: 1000
Макс. скорость: 30 Kts. (35 MPH)	Водоизмещение: 147709.71554 Pounds
Вместимость воды: 369.8408728 Gallons	Объем топливного бака: 2905.892572 Gallons

## Размещение

---

Всего кают: 4

Спальные места: 9

Спальных мест экипажа: 4

Комм. состав экипажа: 1

## Корпус и палуба

---

Материал корпуса: GRP

## Информация о двигателе

---

Двигатели: 2

Производитель: MAN

Модель: V12

Тип двигателя: Inboard

Тип топлива: Diesel

---

# ПОДРОБНОЕ ОПИСАНИЕ

---

## OPTIONAL EXTRAS

---

• Sliding doors and bulwark balcony (starboard side) • Upper deck day head • Tender garage arrangement • Flybridge crane • KVH SAT TV • Idromar watermaker 240L/H • Fin type Sleipner stabilizers  
**TENDER:** Jet Tender and Jetski Seadoo GTR 215 available for sale under separate negotiation

## CONSTRUCTION

---

- Hand-laid GRP
- Gel coat including stripes
- Vinyl ester skin coat with powder bound mat
- Stitched multi-axial reinforced single-skin bottom
- Balsa-cored hull topsides
- PVC foam-cored deck and superstructure
- Hull stiffened with longitudinal stringers supported by transverse bulkheads and floors

## FLYBRIDGE DECK

---

- Self-draining cockpit
- Acrylic deflecting spray screen
- Seating areas
- Storage lockers under seating
- Teak dining tables (natural finish)
- Upholstered sunbathing area forward
- Stainless steel aft safety rails
- Glass holders
- Wetbar unit
- Sink in wetbar unit with hot and cold water supply
- Icemaker in wetbar unit
- Fridge in wetbar unit
- Ceramic electric griddle in wetbar unit
- Fire extinguisher
- Deck wash outlet
- Low-level flybridge lighting 24v
- Radar arch structure
- Radar chair with navigation light assembly
- Overhead lighting on underside of radar arch 24v
- Two pairs marine speakers



- Flagstaff and socket

## FLYBRIDGE HELM

---

- Two helm seats
- Hydraulic steering
- Duplicate engine controls
- Engine instrumentation
- Autopilot repeater
- Radar/chart plotter with GPS repeater
- Depth and speed multi display
- VHF second station
- Remote spotlight control
- Magnetic compass
- Steering indicator
- Trim tab control
- Horn control
- Control head for flybridge CD/radio
- Waterproof plug and socket 12

## DECK

---

- Fittings all in 316 stainless steel and chromed bronze
- Pair stainless steel bow cleats and fairleads
- Stainless steel spring cleats with chafing bars
- Pair stern cleats and fairleads
- Stainless steel pulpit and cockpit rails
- Stainless steel fendering with rubber insert
- Stainless steel bow roller with anchor stop and devil's claw
- Single electric windlass (Lewmar V8) 24v, starboard side, foredeck control only
- Anchor 80kg (galvanised)
- Anchor chain 100 metres/328 feet (12mm diameter, galvanised)
- Stainless steel bow plate
- Deckwash with outlets forward and aft
- Chain locker
- Curved direct glazed safety glass windscreen
- Pantograph windscreen wipers and washers
- Fresh water filler
- Fuel fillers port and starboard
- IMCO navigation lights
- Remote controlled spotlight at bow
- Ensign staff and socket

- Bow seating
- Bow sunbathing pad
- Glass holders
- Storage lockers port and starboard

---

## AFT COCKPIT

---

- Teak-laid cockpit floor
- Self-draining
- Stairs to flybridge with teak treads
- Aft fixed bench seating
- Teak table (natural finish)
- Stern safety gates
- Engine room access hatch
- 2 x stern capstan winches (Lewmar C4)
- 24v and fairleads
- Overhead cockpit lights 24v
- Low-level courtesy lights 24v
- Pair marine speakers connected to saloon
- AV system with Bose PMCIll remote
- Wetbar unit
- Fire extinguisher in wetbar locker
- Coolbox in wetbar unit
- Sink with hot and cold water supply

---

## BATHING PLATFORM

---

- Teak-laid hydraulic lifting bathing platform
- Stairs to aft cockpit with teak treads
- Foldout stainless steel swimming ladder
- Hot and cold hand-held swimming shower
- Fresh water marina connection
- Television and telephone marina connection
- Access to crew quarters
- Dockside AC connection 1 x 100 amp
- Glendinning Cablemaster
- Hydraulic telescopic gangway

---

## SALOON AND DINING

---

- Stainless steel framed sliding door to aft cockpit
- Sliding door curtains with tie backs
- Sofa

seating with storage in base• Two low-level stools• Coffee table• Scatter cushions• Flatscreen television 40" DVD/CD/radio surround-sound system with five speakers and subwoofer AirPort Express connected to surround sound system• Air conditioning• Side windows with blinds• Drinks cabinet with glassware stowage for eight 8 x champagne flutes, 8 x whisky tumblers, 1 x decanter Overhead lighting LED 24v• Double AC sockets• Table lamps• Dining table• 8 x freestanding dining chairs• Storage cupboards port and starboard• Fitted carpet

## **GALLEY**

---

• Large fridge/freezer• 4-ring ceramic hob AC• Hob extractor AC• Convection oven with microwave function AC• Full-size dishwasher AC• Stainless steel sink• Hot and cold water• Rubbish bin• Crockery set (8 place settings)• Cutlery set (8 place settings)• Storage cupboards and drawers• Bar unit with stools• Overhead lighting LED 24v• Double AC sockets• Air conditioning• Fire blanket• Fire extinguisher• First aid kit

## **MAIN HELM CONSOLE AND OBSERVATION AREA**

---

- 2 x upholstered helm seats with electric operation
- Hydraulic power steering
- Radar/chart plotter with GPS
- Autopilot
- Depth and speed displays
- VHF radio dual station
- Magnetic compass
- Horn control
- Switch panels
- Remote spotlight control
- Trim tab controls
- 12v socket
- Engine instrumentation
- Management monitoring for fresh water, black water and fuel
- Main control and monitoring panel (AC/DC) with generators control
- Windscreen wiper and washer controls
- Glass holder
- Screen demister
- Fire extinguisher
- Manual side opening door to starboard side deck
- Sofa seat on port side with table
- Double AC socket for seating group
- Double AC socket at console
- Staircase forward leading to forward VIP cabin
- Fitted carpet

---

## FORWARD VIP STATEROOM

---

- Double berth
- Foam mattress for berth
- Storage beneath berth
- Drawers in berth end
- Bedside lights
- Dressing table
- Low back chair for dressing table
- Air conditioning
- Flat screen television 32" on bulkhead
- Blu-ray/DVD/CD/radio surround-system with two speakers and sub-woofer
- Overhead lighting LED 24v
- Large windows with blind on each side
- Double AC sockets
- Fitted carpet
- Doors to en suite and walk-in wardrobe

---

## FORWARD VIP WALK-IN WARDROBE

---

- Hanging rails
- Shelves and drawers
- Mirror
- Overhead lighting LED 24v
- AC socket
- Fitted carpet
- Door to stateroom

---

## FORWARD VIP EN SUITE

---

• Electric toilet 24v• Vanity top and flooring• Ceramic washbasin• Taps and accessories (toothbrush and glass holder, soap dispenser, towel rails and towels)• Separate shower compartment• Air conditioning outlet• Extractor fan• Vanity mirror• Shelved cupboard• Overhead lighting LED 24v• Opening porthole with mosquito screen and Venetian blind• Shaver socket 240/110v• Door to stateroom

---

## MASTER STATEROOM

---

• Double berth• Foam mattress for berth• Storage and drawers beneath berth• Bedside storage cabinets• Bedside lights 24v• Dressing table• Low back chair for dressing table• Port side seats with table• Air conditioning• Overhead lighting LED 24v• Large windows with blind on each side• Double AC sockets• Flatscreen television 40" on bulkhead• Blu-ray/DVD/CD/radio surround-

system with two speakers and sub-woofer• Fitted carpet• Doors to en suite and walk-in wardrobe

---

## MASTER WALK-IN WARDROBE

---

• Hanging rails• Shelves and drawers• Mirror• Overhead lighting LED 24v• AC socket• Fitted carpet• Door to stateroom

---

## MASTER EN SUITE

---

- Electric toilet 24v
- Vanity top and flooring
- Ceramic washbasin
- Taps and accessories (toothbrush and glass holder, soap dispenser, towel rails and towels)
- Separate shower compartment
- Extractor fan
- Air conditioning outlet
- Mirror
- Overhead lighting LED 24v
- Opening porthole with mosquito screen and Venetian blind
- Shaver socket 240/110v
- Door to stateroom

---

## STARBOARD GUEST CABIN

---

- Two single berths
- Foam mattresses for berths
- Under-berth stowage
- 2 x reading lights 24v
- Hanging wardrobe
- Air conditioning
- Overhead lighting LED 24v
- Porthole with blind
- Double AC socket
- Flat screen television 22"
- Blu-ray/DVD/CD/radio player with two speakers
- Fitted carpet
- Doors to en suite and lobby

---

## STARBOARD GUEST EN SUITE/ DAY HEAD

---

---

• Electric toilet 24v• Vanity top and flooring• Washbasin• Taps and accessories (toothbrush and glass holder, soap dispenser, towel rails and towels)• Separate shower compartment• Acrylic folding shower door• Extractor fan• Air conditioning outlet• Vanity unit• Mirror• Shelved cupboard• Overhead lighting LED 24v• Opening porthole with mosquito screen and Venetian blind• Shaver socket 240/110v• Doors to guest cabin and lobby

## **STERN CREW LOBBY**

---

• Access door from stern• Storage• Washer/dryer• Air conditioning• AC socket• Overhead lighting LED 24v• Doors to crew cabins and crew toilet/shower

## **PORT GUEST EN SUITE**

---

• Electric toilet 24v• Vanity top and flooring• Washbasin• Taps and accessories (toothbrush and glass holder, soap dispenser, towel rails and towels)• Separate shower compartment• Acrylic folding shower door• Extractor fan• Air conditioning outlet• Vanity unit• Shelved cupboard• Overhead lighting LED 24v• Opening porthole with mosquito screen and Venetian blind• Shaver socket 240/110v• Door to guest cabin

## **PORT AFT CREW CABIN**

---

- Single berth
- Foam mattresses for berths
- Reading lights 24v
- Air conditioning
- Overhead lighting LED 24v
- Double AC socket
- Fitted carpet
- Opening porthole with mosquito screen and curtains
- Door to crew lobby

## **PORT FORWARD CREW CABIN**

---

• Single berth• Foam mattresses for berths• Reading lights 24v• Air conditioning• Overhead lighting LED 24v• Double AC socket• Fitted carpet• Opening porthole with mosquito screen and curtains• Door to crew lobby

## **CREW TOILET/ SHOWER**

---

• Tecma toilet 24v• Washbasin• Shower cubicle with bi-fold shower door• Mirror• Vanity unit•

Overhead lighting LED 24v• Shaver socket 240/110v• Doors to crew lobby and engine room

---

## ENGINE COMPARTMENTS AND ANCILLARIES

---

• Soundproofing throughout• Fuel filters/water separators to engines• Fuel filters/water separators to generators• Manual/automatic fire extinguishing system combined with engines, generators and fans shutdown• Automatic bilge and flood pumps with high-level alarms• Air extraction fans (230v) fitted with butterfly shutdown dampers• Generator exhaust silencers and water separators• Engine exhaust dry risers and water injection• Strainers to all raw water inlets• Exhaust gas temperature sensor• Power steering – hydraulic control steering (engine driven)• Lifting platform and trim tabs hydraulic control unit• Air intakes fitted with emergency shutdown flaps (automatically operated)

---

## ELECTRICAL SYSTEM

---

- Euro spec only: 2 x 28kW @ 50Hz slow speed Kohler generators with underwater silent exhaust and sound box
- Dockside AC connection 1 x 100 amp
- Glendinning Cable master
- Isolation Transformer
- Semi-automatic AC power management system
- 24v and 12v DC electrical system with full circuit breaker protection
- 8 x engine batteries 24v circuit
- 6 x domestic batteries 24v circuit
- Alternator split-charging system
- Remote battery switches controlled from aft cockpit locker
- 1 x 100 amp battery charger for 24v circuits
- Immersion heater for calorifier
- AC sockets throughout the boat
- 24v hand light and cable
- Fire detection system with sensors in all cabins and monitoring beside main helm position

---

## UNDERWATER GEAR

---

• NAB 5-blade propellers• Bronze (MB2) P-brackets• 75mm Temet 25 propeller shafts• Self-aligning shaft seal with spare seal• High-performance bronze rudders• Valves to all underwater skin fittings• Full cathodic bonding system to zinc anodes• Stainless steel trim tabs• Hydraulic bow thruster• Hydraulic stern thruster• Antifouling

---

## SYSTEMS

---

- Hydraulic power steering
- Electric toilet system with two-switch control
- Toilets discharging overboard or to black water tank
- Black water tank discharging to dockside or overboard through discharge/macerator pump (24v)
- Aluminium fresh water tank with electric sending unit
- Integral GRP fuel tank with electric sending unit
- Water pressure system (230v)
- Hot water tank, 200 litre (with 2 x 2kW immersion heaters)
- Hot water circulating pump (230v)
- Washbasins, showers and air conditioning fan coils to drain to grey water tank
- Grey water tank discharging overboard through discharge pump (24v)
- Chilled water air conditioning system (reverse cycle), (230v)
- Bilge pumping system (230v)
- Manual/automatic fire extinguishing system combined with engines, generators and fans shutdown
- Auxiliary hydraulics for trim tabs and platform (24v)

## MISCELLANEOUS

- Retractable boat hook
- 6 x docking lines (6 x 15 metre, 20mm diameter, black)
- 1 x tender line (1 x 10 metre, 10mm diameter, black)
- 8 x fenders (F7, 15" x 41", white)
- 8 x fender ties (8 x 3.5 metre, 10mm diameter, black)
- Flagstaff with line
- Pennant mast with pennant flag
- Mosquito screens for openable portlights
- Vacuum cleaner
- Spare bulbs
- Small toolkit
- 8 x towel sets
- First aid kit
- Fire blanket
- Leather cleaning kit
- Lead lamp
- Deckwash fitting and hose reel
- Portable fire extinguishers

## COVERS

- Windscreen sun screen
- Flybridge instrument cover
- Aft cockpit camper cover with windows

## Исключения

При продаже яхты исключаются личные вещи владельца.

## Отказ от ответственности

Компания предоставляет описание судна или яхты добросовестно, но не может гарантировать точность этой информации, а также не ручается за техническое состояние. Покупатель должен проинструктировать своих агентов или оценщиков



исследовать представленную информацию более подробно, по собственному желанию. Продажа судна или яхты, изменение цены или снятие с продажи будет происходить без предварительного уведомления.

# ФОТОГРАФИИ

**LadyAnna001**



**LadyAnna005**



**LadyAnna008**



**LadyAnna009**



**LadyAnna011**



**LadyAnna012**



**LadyAnna015**



**LadyAnna017**



**LadyAnna019**



**LadyAnna020**



**LadyAnna021**



**LadyAnna022**





**LadyAnna023**



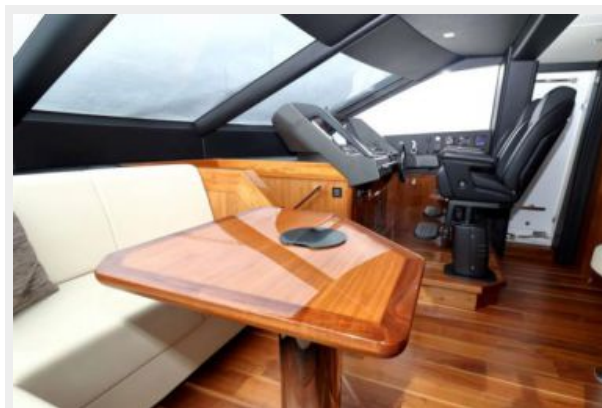
**LadyAnna024**



**LadyAnna025**



**LadyAnna026**



**LadyAnna028**



**LadyAnna030**



**LadyAnna031**



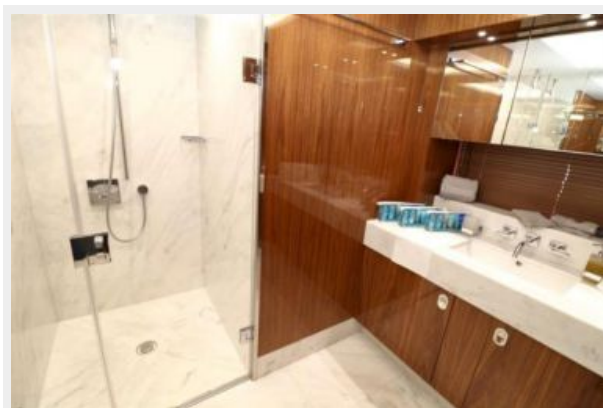
**LadyAnna032**



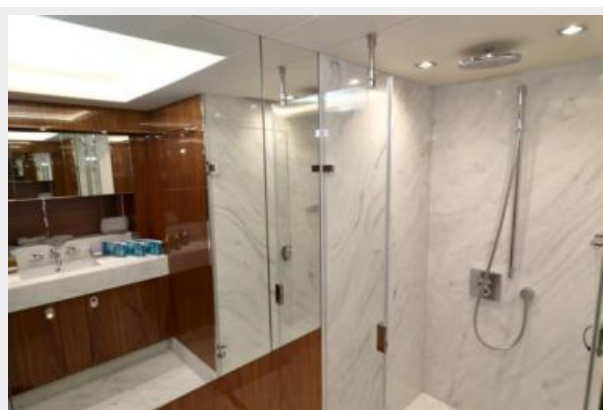
**LadyAnna035**



**LadyAnna036**



**LadyAnna037**



**LadyAnna038**





**LadyAnna040**



**LadyAnna041**



**LadyAnna042**



**LadyAnna043**



**LadyAnna045**



**LadyAnna046**



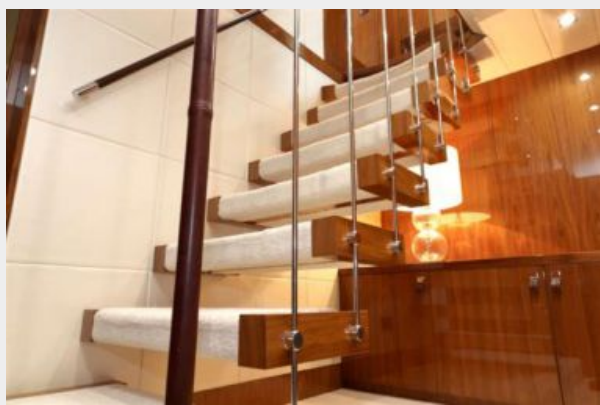
**LadyAnna047**



**LadyAnna048**



**LadyAnna049**



**Sunseeker 86 19**



**Sunseeker 86 21**



**Sunseeker 86 24**





**Sunseeker 86 a**



**Sunseeker 86 b**



**Sunseeker 86 d**



**Sunseeker 86 fly lounge**



**Sunseeker 86 flybridge**

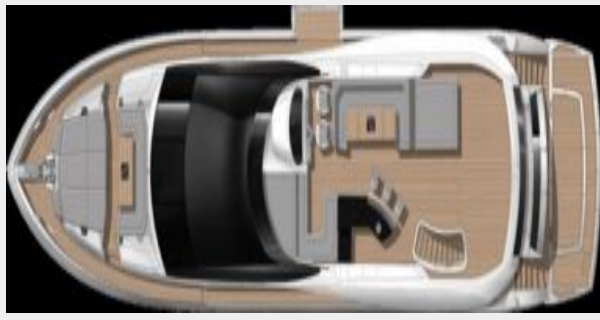


**Sunseeker 86 nose**





**SUN\_10545170\_86Y\_GA\_flybridge-  
1500x398**



**SUN\_10545170\_86Y\_GA\_main\_deck-  
1500x398**



**SUN\_10545170\_86Y\_GA\_lower\_deck-1500x368**



# КОНТАКТЫ

---

Андрей Шестаков (Andrey Shestakov) – ведущий яхтенный брокер отдела продаж яхт и судов компании Shestakov Yacht Sales Inc. Официальный представитель Shestakov Yacht Sales Inc. для русскоговорящих клиентов в центральном офисе компании в Майами/Форт Лодердейл/Флорида/США.

## Контактная информация

---

Email: [andrey@shestakovyachtsales.com](mailto:andrey@shestakovyachtsales.com)

Web: [shestakovyachtsales.com](http://shestakovyachtsales.com)

## Телефоны

---

Краснодарский край: **+7(918)465-66-44**

США, Майами, Флорида: **+1(954)274-4435**

## Время работы

---

Понедельник – Суббота: **9:00 - 21:00**  
EDT

Воскресенье: **Закрето**

## Адрес

---



Harbour Towne Marina, 850 NE 3rd St,  
STE 213, Dania, FL 33004