

MICAELA BELLA — LAGOON



Builder: LAGOON

Year Built: 2013

Model: Catamaran

Price: PRICE ON APPLICATION

Location: United States

LOA: 62' 0" (18.90m)

Beam: 32' 10" (10.01m)

Max Draft: 5' 1" (1.55m)

Our experienced yacht broker, Andrey Shestakov, will help you choose and buy a yacht that best suits your needs **Micaela Bella — LAGOON** from our catalogue. Presently, at Shestakov Yacht Sales Inc., we have a wide variety of yachts available on our sale's list. We also work in close contact with all the big yacht manufacturers from all over the world.

If you would like to buy a yacht **Micaela Bella — LAGOON** or would like help answering any questions concerning purchasing, selling or chartering a yacht, please call **+1(954)274-4435**

TABLE OF CONTENTS

TABLE OF CONTENTS	2
SPECIFICATIONS	5
Overview	5
Basic Information	5
Dimensions	5
Speed, Capacities and Weight	6
Accommodations	6
Hull and Deck Information	6
Engine Information	6
DETAILED INFORMATION	7
December 2019 Refit and Upgrades - \$700K	7
Mechanical Disclaimer	7
Disclaimer	7
Exclusions	8
Disclaimer	8
PHOTOS	9
Entry and Galley	9
Full Galley	9
Refrigerator	9
Washer	9
Galley and Nav Station	10
Salon	10
Nav Station	10
Cabin	10
Cabin	10
Shower	10
Cabin	11
Cabin	11

Cabin	11
Cabin	11
Head	11
Cabin	11
Shower	12
Head	12
Starboard Bow	12
Bow at Anchor	12
Roller Furling	12
Bow Trampoline	12
Cabin Top and Helm Station	13
Mast Base	13
Mast	13
Boom and Helm Station	13
Winches and Travellers	13
Winches	13
Winches	14
Helm Deck Seating	14
Helm Deck Seating	14
Helm	14
Helm	14
TracPhone	14
Cockpit Wet Bar	15
Cockpit	15
Cockpit Dining	15
Cockpit Seating	15
Engine Room Entry	15
Swim Platform	15
Engine Room	16

Engine Room	16
Engine Room - Generator	16
CONTACTS	17
Contact details	17
Telephones	17
Office hours	17
Address	17

SPECIFICATIONS

Overview

MOVED TO NEW LOCATION, FORT LAUDERDALE, FLORIDA

Bristol Condition Lagoon 620 Catamaran. One owner since new, two full time crew, open checkbook maintained, only the best of the best. Six cabin, five head layout, plus two bow crew quarters (each with its own head).

Two generators, two watermakers, multiple redundant systems for long haul/remote cruising autonomy. Good sail inventory.

Low Hour Motors!

Fresh Bottom Paint!

Boat is turnkey, ready to sail to anywhere in the world!

The yacht has had a full refit with new electronics, recaulk of windows, upgraded rigging and many, many more upgrades in the 4th quarter of 2019.

Available for showing after February 15, 2020.

Basic Information

Category: Catamaran

Sub Category: Other

Model Year: 2013

Year Built: 2013

Country: United States

Dimensions

LOA: 62' 0" (18.90m)

LWL: 59' 9" (18.21m)

Beam: 32' 10" (10.01m)

Max Draft: 5' 1" (1.55m)

Clearance: 101' 9" (31.01m)

Speed, Capacities and Weight

Displacement: 37639 Pounds

Water Capacity: 280 Gallons

Holding Tank: 80 Gallons

Fuel Capacity: 400 Gallons

Accommodations

Total Cabins: 6

Sleeps: 14

Total Heads: 6

Hull and Deck Information

Hull Material: Fiberglass

Engine Information

Engines: 2

Manufacturer: Volvo

Model: D3-150

Engine Type: Inboard

Fuel Type: Diesel

DETAILED INFORMATION

December 2019 Refit and Upgrades - \$700K

- NEW Navigation System
- NEW Satcom System
- NEW Navigation and Deck Lighting
- NEW Interior Lighting - courtesy, headliner, salon and cabin/head lighting
- NEW Cabin Fans - all cabin fans replaced
- 2019 A/C Repairs - includes repair/replacement of all required air handler and chiller components
- NEW Batteries - House, Engine and Generator
- NEW Ships Charging and Inverter System
- NEW Domestic Appliances - Galley, Flybridge and Laundry
- NEW Interior and Exterior Lighting
- NEW Pumps and Electric Head Systems
- NEW Furling Systems and Controllers - all replaced
- NEW Mast, Standing Rigging, Running Rigging - all replaced
- 2019 Watermaker Repair to operational condition
- 2019 Tenderlift Repair - includes replacement of power pack
- 2019 Windlass Repair - includes replacement of mechanical, electrical and control components
- NEW Winch Contactors and Control Switches - replace winch electrical components
- 2019 Repairs to Propulsion Engines - includes electronic engine controls, engine sensors, engine displays, software updates and programming
- 2019 Repairs to Gensets - both generators
- NEW Bottom Paint
- NEW TV, Stereo and Entertainment Systems
- REPLACED all Eplex and Scheiber System Components
- and more...!

Mechanical Disclaimer

Engine hours are as of the date of the original listing and are a representation of what the listing broker is told by the owner and/or actual reading of the engine hour meters. The broker cannot guarantee the true hours. It is the responsibility of the purchaser and/or his agent to verify engine hours, warranties implied or otherwise and major overhauls as well as all other representations noted on the listing brochure.

Disclaimer

The Company offers the details of this vessel in good faith but cannot guarantee or warrant the

accuracy of this information nor warrant the condition of the vessel. A buyer should instruct his agents, or his surveyors, to investigate such details as the buyer desires validated. This vessel is offered subject to prior sale, price change, or withdrawal without notice.

Exclusions

Owner's personal belongings.

Disclaimer

The Company offers the details of this vessel or yacht in good faith but cannot guarantee or warrant the accuracy of this information nor warrant the condition of the vessel. A buyer should instruct his representatives, agents, or his surveyors, to investigate such details as the buyer desires validated. This vessel or yacht is offered subject to prior sale, price change, or withdrawal without notice.

PHOTOS

Entry and Galley



Full Galley



Refrigerator



Washer



Galley and Nav Station



Salon



Nav Station



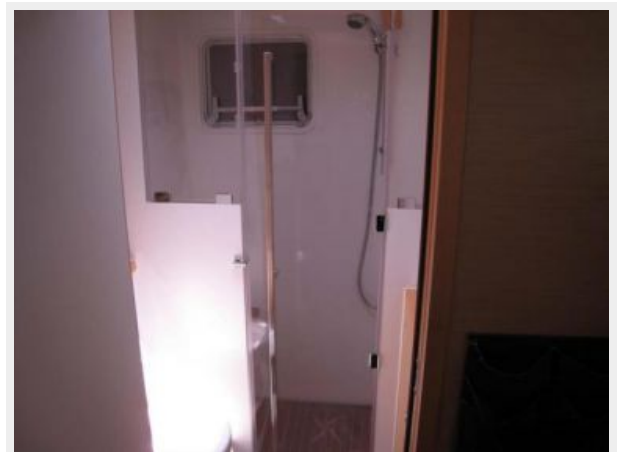
Cabin



Cabin



Shower



Cabin



Cabin



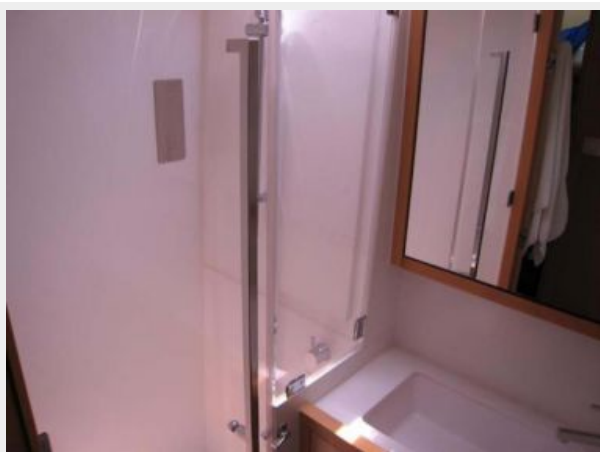
Cabin



Cabin



Head



Cabin



Shower



Head



Starboard Bow



Bow at Anchor



Roller Furling



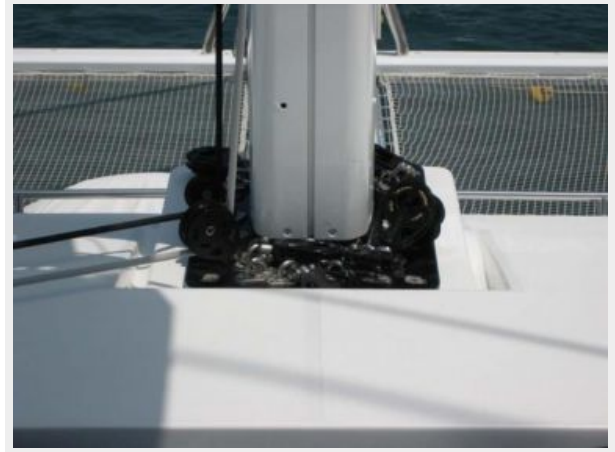
Bow Trampoline



Cabin Top and Helm Station



Mast Base



Mast



Boom and Helm Station



Winches and Travellers



Winches



Winches



Helm Deck Seating



Helm Deck Seating



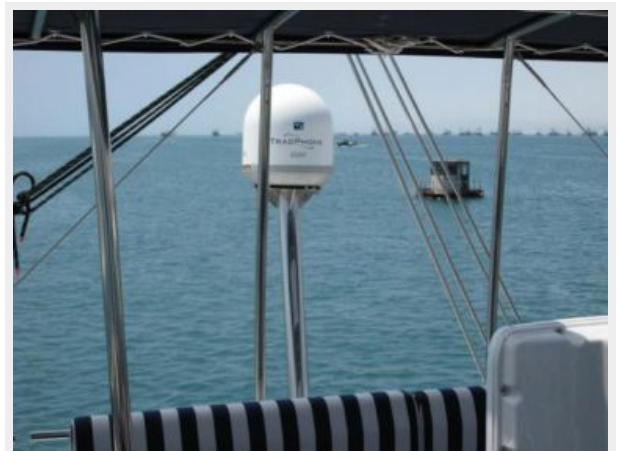
Helm



Helm



TracPhone



Cockpit Wet Bar



Cockpit



Cockpit Dining



Cockpit Seating



Engine Room Entry



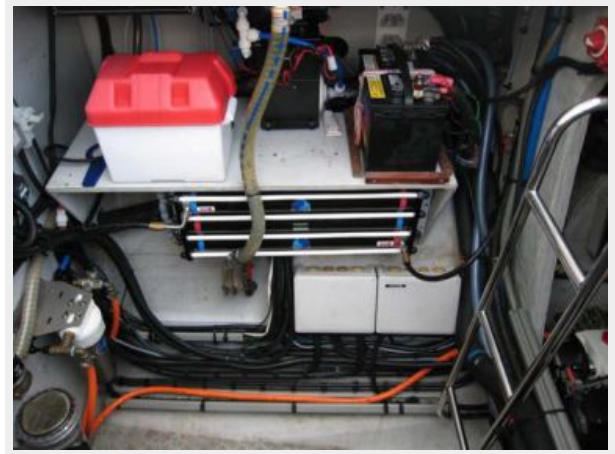
Swim Platform



Engine Room



Engine Room



Engine Room - Generator



CONTACTS

Andrey Shestakov, leading yacht broker of the sales department of Shestakov Yacht Sales Inc. Shestakov Yacht Sales Inc., the official representative of the Miami/Fort Lauderdale FL headquarters.

Contact details

Email: andrey@shestakovyachtsales.com

Web: shestakovyachtsales.com/en/

Telephones

USA: +1(954)274-4435

Office hours

Monday – Saturday: **9:00 - 21:00** EDT

Sunday: **closed**

Address



Harbour Towne Marina, 850 NE 3rd St,
STE 213, Dania, FL 33004