

## STAY FOOLISH — ISLAND PACKET YACHTS



**Builder:** ISLAND PACKET YACHTS

**Year Built:** 2002

**Model:** Cruiser

**Price:** PRICE ON APPLICATION

**Location:** United States

**LOA:** 44' 0" (13.41m)

**Beam:** 14' 3" (4.34m)

**Max Draft:** 4' 10" (1.47m)

**Cruise Speed:** 8 Kts. (9 MPH)

Our experienced yacht broker, Andrey Shestakov, will help you choose and buy a yacht that best suits your needs **Stay Foolish — ISLAND PACKET YACHTS** from our catalogue. Presently, at Shestakov Yacht Sales Inc., we have a wide variety of yachts available on our sale's list. We also work in close contact with all the big yacht manufacturers from all over the world.

If you would like to buy a yacht **Stay Foolish — ISLAND PACKET YACHTS** or would like help answering any questions concerning purchasing, selling or chartering a yacht, please call **+1(954)274-4435**

# TABLE OF CONTENTS

TABLE OF CONTENTS	2
SPECIFICATIONS	5
Overview	5
Basic Information	7
Dimensions	7
Speed, Capacities and Weight	7
Accommodations	7
Hull and Deck Information	7
Engine Information	8
DETAILED INFORMATION	9
MAIN DESCRIPTION	9
ISLAND PACKET 420 WALTHROUGH- INTERIOR	11
ISLAND PACKET 420 GALLEY	11
ISLAND PACKET 420 NAV & ELECTRICAL STATION	11
ISLAND PACKET 420 MAIN SALON	11
ISLAND PACKET 420 AFT CABIN	12
ISLAND PACKET 420 AFT HEAD	12
ISLAND PACKET 420 NAVIGATION EQUIPMENT	12
ISLAND PACKET 420 ELECTRICAL	12
ISLAND PACKET 420 MASTER STATEROOM	12
ISLAND PACKET 420 MASTER HEAD	13
ISLAND PACKET 420 SAILS & RIGGING	13
ISLAND PACKET 420 ENGINE	13
ISLAND PACKET 420 GROUND TACKLE	13
ISLAND PACKET 420 ON DECK	13
DISCLAIMER	13
Exclusions	14
Disclaimer	14

PHOTOS	15
#2-2002 Island Packet 420 STAY FOOLISH stern	15
#1-2002 Island Packet 420 STAY FOOLISH	15
#4-2002 Island Packet 420 STAY FOOLISH Master head	15
#3-island-packet-420-layout	15
#5 2002 Island Packet 420 STAY FOOLISH Master shower	16
#6-2002 Island Packet 420 STAY FOOLISH Master cabin	16
#7 2002 Island Packet 420 STAY FOOLISH Storage	16
#8 2002 Island Packet 420 STAY FOOLISH Cabin	16
#9 2002 Island Packet 420 STAY FOOLISH Port settee	16
#10 2002 Island Packet 420 STAY FOOLISH Stbd. settee	16
#11 2002 Island Packet 420 STAY FOOLISH Nav. Desk	17
#12 2002 Island Packet 420 STAY FOOLISH Nav. station	17
#13 2002 Island Packet 420 STAY FOOLISH Galley	17
#14 2002 Island Packet 420 STAY FOOLISH Galley-2	17
#15 2002 Island Packet 420 STAY FOOLISH Stove	17
#16 2002 Island Packet 420 STAY FOOLISH Icebox	17
#17 2002 Island Packet 420 STAY FOOLISH Aft cabin	18
#18 2002 Island Packet 420 STAY FOOLISH aft cabin storage	18
#19 2002 Island Packet 420 STAY FOLISH Cockpit seating	18
#20 2002 Island Packet 420 STAY FOOLISH Cockpit	18
#21 2002 Island Packet 420 STAY FOOLISH Entry	18
#22 2002 Island Packet 420 STAY FOOLISH Helm	18
#23 2002 Island Packet 420 STAY FOOLISH Helm seat	19
#24 2002 Island Packet 420 STAY FOOLISH In-mast furling mainsail	19
#25 2002 Island Packet 420 STAY FOOLISH Ground tackle	19
#26 2002 Island Packet 420 STAY FOOLISH Furling staysail	19
2002 Island Packet 420 STAY FOOLISH aft head	19
CONTACTS	20

---

Contact details	20
Telephones	20
Office hours	20
Address	20

---

# SPECIFICATIONS

---

## Overview

---

The Island Packet 420 defines Island Packet designs in every aspect, while also representing a significant evolution from earlier models in this size range. With ongoing advances in construction technology, equipment selection, manufacturing processes, and quality control measures, the 420 is one of the most desirable and best built yachts Island Packet has ever offered. The 420 hull incorporates a host of design elements that improve a concept that emphasizes seakeeping, safety, stability, and speed. The bow and stern configurations combine to increase boat speed through a longer sailing waterline and reduced resistance in waves, while refinements to the keel and rudder foil sections benefit upwind performance, reduce drag, and enhance steering. The hull continues to be molded as a one-piece (integral hull and keel) solid tri-axial fiberglass structure, utilizing Island Packet's pressure-fed resin impregnation system, PolyClad 2 gel below the waterline, and DuraShield gel on the topsides. The 420 deck design offers all the key features long appreciated by Island Packet owners: recessed foredeck with bulwarks, anchor platform with two rollers (the exclusive SeaSafe patented design), full-length stainless steel cabin top handrails, beautifully molded detail for hardware, an improved dodger - windshield mount, and Dorade vents with stainless steel cowls and welded guards. The cockpit offers long, contoured seats with big lockers under push-button latch seat hatches with gas support struts, an insulated beverage box, hand-held shower, separate helm seat with backrest and premium rack and pinion pedestal mounted steering (with provision for auto pilot), molded stern rail seats, and a central gate leading to a stern platform. As always, sail control lines are led aft making sail trim or changes convenient from the cockpit. Bins located at the forward end of both coamings have hinged tops and provide handy and neat storage for these lines. With the available option of a roller furling mainsail, sailing has become easier and more enjoyable than ever. It's a real pleasure to be able to quickly set, trim, or stow the sails without leaving the cockpit. While on the subject of the rig, the Island Packet 420 has been created with a somewhat taller configuration to take advantage of her extra sail carrying ability and to enhance both light air and upwind performance. The contributions to performance and sail control from the Hoyt staysail boom would be hard to overstate. This simple device has "turbo-charged" the staysail's contribution to overall performance and makes the cutter rig better than ever. The 420 should have excellent qualities for cruising under all points of sail in a wide variety of conditions with a very manageable and versatile rig. Perhaps the most exciting aspect of the Island Packet 420 is the interior arrangement. The beam of over 14 feet and a lot of usable hull length, have enabled Island Packet to create very spacious accommodations with all the amenities that owners are looking for, along with lots of storage space and large tank capacities to meet the demands of extended cruising. The owner's quarters are located forward and include a private head compartment with stall shower. The stateroom introduces an arrangement with a large double berth offset to starboard and angled away from the hull side to allow access from either side. The berth top is hinged and supported with gas struts and may be raised to access a generous storage bin underneath for blankets and the like. Additional drawers, bureaus, shelves, and a cedar lined hanging locker provide ample room for personal items. A dressing seat adds further

convenience, and two deck hatches, a Dorade vent, and several opening ports will keep this area bright and breezy, as are all other areas throughout the interior. The adjoining head has a sink vanity with cabinet space over and under, "captain's-chair" seating for the toilet, and built-in medicine chest and linen drawers. The shower includes a molded seat and folding textured acrylic door that stows flat against the bulkhead when not in use. Space (and access) has been provided for owner - dealer installation of a bow thruster under the shower seat area. The big forepeak is reached through a tall bulkhead door in the shower area. This area is unique in that it features Island Packet's usual divided chain locker forward (prepared for windlass installation and chain control), plus a separate area immediately aft that will be handy for storage of items like fenders, extra anchors, and rodes, etc. when underway. The aft guest stateroom has a wide double berth, ample storage in a hanging locker and bureau, and private entrance to the aft head compartment. The aft head may also be accessed from the salon area, and includes a shower with curtained enclosure and folding seat over the toilet. The sink vanity has cabinet storage over and under and, as with the forward head, is finished in light colored Formica laminates with varnished teak trim for an attractive, bright, and practical finish. Shower drains in both heads have an electric drain pump discharging overboard, with sole drains configured to work at rest or under sail. The main salon is notable for its overall spaciousness. Once again, the popular arrangement of full-length, facing settees is incorporated, with the starboard L-shaped settee able to convert into a double berth with a pull-out extension. Island Packet's trademark folding dining table hinges from the bulkhead storage rack to provide for either a large serving - dining area or, when retracted, a completely open salon. Large storage areas are available under and behind both port and starboard settees, in cabinets outboard, and above the settees, and in a cedar lined hanging locker. Large capacity tanks for water, fuel, and waste are located under the sole, keeping these considerable weights low and close to the center of the yacht to maximize stability, minimize trim changes, and increase useful storage elsewhere. The full-size navigation table with swing-out seat - adjacent to the main salon - should please the most ardent navigator, and includes recessed master electrical distribution panels, with numerous spare breakers and ample panel space for dealer - owner installed electronics. A storage tray is provided under the hinged tabletop, with a locker under and outboard of the table, and a chart drawer under the settee immediately forward of the nav area. The Island Packet 420 galley combines the best features of all previous Island Packet models and is notable for its generous counter space, storage room, and numerous convenience features. The recently developed ice box installation - with hinged and double gasketed push-button latch lid, and super-insulated box - is factory prepared for dealer - owner installation of refrigeration. There's plenty of room for block ice if preferred, or capacity for extra refrigerated storage on longer voyages. This installation was developed jointly with a professional refrigeration manufacturer, and tested by an independent lab during its development. It has resulted in the best insulating qualities of any marine ice box the lab has tested (and they've done quite a few). Seaward's recently introduced sealed-top LPG range is standard, along with a microwave oven (A-C operation only). Several deep storage drawers, a pull-out trash receptacle, dish rack with cutlery drawers, pot and pan bin, dry storage lockers, and counter top cabinets should make one feel right at home. All sole surfaces in the galley, companionway, and navigation areas are molded in a slip-resistant diamond pattern for improved safety and ease of maintenance in these frequently used areas. A teak grate in the sole covers a lift-out dust tray, as well as access to the fuel and water tank fittings and the lighted bilge sump.

---

## Basic Information

---

**Category:** Cruiser

**Model Year:** 2002

**Year Built:** 2002

**Country:** United States

---

## Dimensions

---

**LOA:** 44' 0" (13.41m)

**Beam:** 14' 3" (4.34m)

**Max Draft:** 4' 10" (1.47m)

**Clearance:** 58' 8" (17.88m)

---

## Speed, Capacities and Weight

---

**Cruise Speed:** 8 Kts. (9 MPH)

**Displacement:** 28400 Pounds

**Water Capacity:** 250 Gallons

**Holding Tank:** 60 Gallons

**Fuel Capacity:** 160 Gallons

---

## Accommodations

---

**Total Cabins:** 2

**Total Berths:** 3

**Total Heads:** 2

---

## Hull and Deck Information

---

**Hull Material:** Fiberglass

---

## Engine Information

---

**Engines:** 1

**Manufacturer:** Yanmar

**Model:** 4JH-3TE

**Engine Type:** Inboard

**Fuel Type:** Diesel



---

# DETAILED INFORMATION

---

## MAIN DESCRIPTION

---

The Island Packet 420 defines Island Packet designs in every aspect, while also representing a significant evolution from earlier models in this size range. With ongoing advances in construction technology, equipment selection, manufacturing processes, and quality control measures, the 420 is one of the most desirable and best built yachts Island Packet has ever offered. The 420 hull incorporates a host of design elements that improve a concept that emphasizes seakeeping, safety, stability, and speed. The bow and stern configurations combine to increase boat speed through a longer sailing waterline and reduced resistance in waves, while refinements to the keel and rudder foil sections benefit upwind performance, reduce drag, and enhance steering. The hull continues to be molded as a one-piece (integral hull and keel) solid tri-axial fiberglass structure, utilizing Island Packet's pressure-fed resin impregnation system, PolyClad 2 gel below the waterline, and DuraShield gel on the topsides. The 420 deck design offers all the key features long appreciated by Island Packet owners: recessed foredeck with bulwarks, anchor platform with two rollers (the exclusive SeaSafe patented design), full-length stainless steel cabin top handrails, beautifully molded detail for hardware, an improved dodger - windshield mount, and Dorade vents with stainless steel cowls and welded guards. The cockpit offers long, contoured seats with big lockers under push-button latch seat hatches with gas support struts, an insulated beverage box, hand-held shower, separate helm seat with backrest and premium rack and pinion pedestal mounted steering (with provision for auto pilot), molded stern rail seats, and a central gate leading to a stern platform. As always, sail control lines are led aft making sail trim or changes convenient from the cockpit. Bins located at the forward end of both coamings have hinged tops and provide handy and neat storage for these lines. With the available option of a roller furling mainsail, sailing has become easier and more enjoyable than ever. It's a real pleasure to be able to quickly set, trim, or stow the sails without leaving the cockpit. While on the subject of the rig, the Island Packet 420 has been created with a somewhat taller configuration to take advantage of her extra sail carrying ability and to enhance both light air and upwind performance. The contributions to performance and sail control from the Hoyt staysail boom would be hard to overstate. This simple device has "turbo-charged" the staysail's contribution to overall performance and makes the cutter rig better than ever. The 420 should have excellent qualities for cruising under all points of sail in a wide variety of conditions with a very manageable and versatile rig. Perhaps the most exciting aspect of the Island Packet 420 is the interior arrangement. The beam of over 14 feet and a lot of usable hull length, have enabled Island Packet to create very spacious accommodations with all the amenities that owners are looking for, along with lots of storage space and large tank capacities to meet the demands of extended cruising. The owner's quarters are located forward and include a private head compartment with stall shower. The stateroom introduces an arrangement with a large double berth offset to starboard and angled away from the hull side to allow access from either side. The berth top is hinged and supported with gas struts and may be raised to access a generous storage bin underneath for blankets and the like. Additional drawers, bureaus, shelves, and a cedar lined hanging locker provide ample room for personal items. A dressing seat adds further

convenience, and two deck hatches, a Dorade vent, and several opening ports will keep this area bright and breezy, as are all other areas throughout the interior. The adjoining head has a sink vanity with cabinet space over and under, "captain's-chair" seating for the toilet, and built-in medicine chest and linen drawers. The shower includes a molded seat and folding textured acrylic door that stows flat against the bulkhead when not in use. Space (and access) has been provided for owner - dealer installation of a bow thruster under the shower seat area. The big forepeak is reached through a tall bulkhead door in the shower area. This area is unique in that it features Island Packet's usual divided chain locker forward (prepared for windlass installation and chain control), plus a separate area immediately aft that will be handy for storage of items like fenders, extra anchors, and rodes, etc. when underway. The aft guest stateroom has a wide double berth, ample storage in a hanging locker and bureau, and private entrance to the aft head compartment. The aft head may also be accessed from the salon area, and includes a shower with curtained enclosure and folding seat over the toilet. The sink vanity has cabinet storage over and under and, as with the forward head, is finished in light colored Formica laminates with varnished teak trim for an attractive, bright, and practical finish. Shower drains in both heads have an electric drain pump discharging overboard, with sole drains configured to work at rest or under sail. The main salon is notable for its overall spaciousness. Once again, the popular arrangement of full-length, facing settees is incorporated, with the starboard L-shaped settee able to convert into a double berth with a pull-out extension. Island Packet's trademark folding dining table hinges from the bulkhead storage rack to provide for either a large serving - dining area or, when retracted, a completely open salon. Large storage areas are available under and behind both port and starboard settees, in cabinets outboard, and above the settees, and in a cedar lined hanging locker. Large capacity tanks for water, fuel, and waste are located under the sole, keeping these considerable weights low and close to the center of the yacht to maximize stability, minimize trim changes, and increase useful storage elsewhere. The full-size navigation table with swing-out seat - adjacent to the main salon - should please the most ardent navigator, and includes recessed master electrical distribution panels, with numerous spare breakers and ample panel space for dealer - owner installed electronics. A storage tray is provided under the hinged tabletop, with a locker under and outboard of the table, and a chart drawer under the settee immediately forward of the nav area. The Island Packet 420 galley combines the best features of all previous Island Packet models and is notable for its generous counter space, storage room, and numerous convenience features. The recently developed ice box installation - with hinged and double gasketed push-button latch lid, and super-insulated box - is factory prepared for dealer - owner installation of refrigeration. There's plenty of room for block ice if preferred, or capacity for extra refrigerated storage on longer voyages. This installation was developed jointly with a professional refrigeration manufacturer, and tested by an independent lab during its development. It has resulted in the best insulating qualities of any marine ice box the lab has tested (and they've done quite a few). Seaward's recently introduced sealed-top LPG range is standard, along with a microwave oven (A-C operation only). Several deep storage drawers, a pull-out trash receptacle, dish rack with cutlery drawers, pot and pan bin, dry storage lockers, and counter top cabinets should make one feel right at home. All sole surfaces in the galley, companionway, and navigation areas are molded in a slip-resistant diamond pattern for improved safety and ease of maintenance in these frequently used areas. A teak grate in the sole covers a lift-out dust tray, as well as access to the fuel and water tank fittings and the lighted bilge sump.

---

## ISLAND PACKET 420 WALTHROUGH- INTERIOR

---

There is a reason that this boat won "Boat of the Year" honors when it was introduced. Aside from a high level of craftsmanship that IP's are known for, this yacht is stunningly beautiful and exceptionally comfortable. As you enter down the companionway, you will immediately notice the fine cabinetry and joinery work along with the openness of the salon, ample lighting and comfortable, thick cushions on the settees. The boat is lovely, but also warm and welcoming. At the bottom of the steps on the starboard side is the galley. Aft and on the port side is the guest cabin and the aft guest head. As you enter the salon, you will see the nav station just aft of the settee on the starboard side. The nav seat is electrically powered to swing out when being used and stow easily under the desk when put away. The large, hinged chart table has storage under it and a locker under the desk as well as a chart drawer under the settee. The master suite is forward and features a queen island berth with a large storage locker under it that is accessed by the bottom of the bunk being put on gas support struts so that it easily lifts up. There is a large hanging locker in addition to many drawers and a seat on the port side. All the way forward is the ensuite head with marine toilet, deep s/s sink with vanity and separate shower stall with a built-in seat.

---

## ISLAND PACKET 420 GALLEY

---

The galley is ideally suited for the cruising sailor in a U-shaped design with generous counter space, storage lockers and pull-out trash receptacle. The sole is molded fiberglass in a slip-resistant, diamond pattern for ease of maintenance and secure footing. The galley features:\* Adler-Barbour holding plate refrigerator/ freezer, top-loading with electric drain pump\* Gimballed 3-burner LPG stove with oven\* New aluminum propane tanks and regulator\* Double, stainless steel sink\* 12vdc fan\* On the bulkhead, there is a cabinet with access to the cockpit instruments.\* Pull-out trash receptacle

---

## ISLAND PACKET 420 NAV & ELECTRICAL STATION

---

The nav station is located forward of the galley and features:\* Full-size navigation table with storage tray under it\* Nav station seat that swings out electrically and then stows back under the table\* There is a locker under the table for storing books and manuals and another locker outboard of the table. \* There is a chart drawer under the settee just forward of the nav area\* The main electrical panels are located in the nav area and are easily accessible\*

---

## ISLAND PACKET 420 MAIN SALON

---

The main salon on the 420 is beautiful, yet practical. With a settee on each side, there is plenty of seating for dining or entertainment. The dining table is hinged and stows neatly, out of the way against the bulkhead. When the table is down, you can see the perfect storage area for cups, glasses or other galley gear. With the table up, the starboard settee slides out to make another

double berth for extra guests. Under the settees and behind the cushions are additional storage areas. Other features include:\* Marine Air reverse cycle heat and A/C ( 3 units; 1 unit is new)\* Charts and cruising guide for Southwest Florida & nav. tools\* Flare kit\* Color TV\* AM/FM stereo with CD player\* Portable vacuum cleaner\* Ship's files and manuals\* Binoculars\* Flashlights\* EPIRB\* Horn, electric\* Fuel and water tanks are centrally located below the cabin sole, keeping the weight low and toward the center of the boat. The tank gauges are easily accessible through lift-out trays.

---

## ISLAND PACKET 420 AFT CABIN

---

The aft, port side cabin features a large full-size athwartship berth, cedar-lined hanging locker, and ample storage compartments for guests. There is access to the head from this cabin or from the salon. Two opening ports and a hatch provide plenty of light and ventilation.

---

## ISLAND PACKET 420 AFT HEAD

---

The guest head is aft of the salon and next to the guest cabin. The head may be entered from the guest cabin or the main salon. The head features a folding teak shower seat, large vanity with oval sink, mirror and shower unit mounted on the bulkhead. There is a wrap-around shower curtain to keep the vanity and locker dry. Both heads have new Raritan electric toilets with a Purisan waste treatment system. Both heads have electric shower drain pumps.

---

## ISLAND PACKET 420 NAVIGATION EQUIPMENT

---

Navigation equipment includes:\* VHF Radio- Horizon Intrepid\* New VHF antenna\* GPS-Raymarine Hybrid Touch\* Radar- Furuno NAVTEX NX-300\* Raymarine Tridata ST60 Speed, Distance & Depth\* Raymarine ST60 AWI\* Autopilot- Raymarine ST6001\* New Global Fix EPIRB

---

## ISLAND PACKET 420 ELECTRICAL

---

\* Generator- Onan MDK\* Batteries- (8) heavy duty marine batteries\* New bow thruster battery bank\* Battery Charger- Sterling Power 60A\* Shore power system- 30 A\* Shore power adapters - 30A, 50A, 240/120\* Alarms- Low oil pressure; High water temperature\* Bow thruster - Sie Power SP75T\* Solar arch with (2) 85W panels

---

## ISLAND PACKET 420 MASTER STATEROOM

---

The master suite is all the way forward in the boat and features a large island berth that is accessible from both sides. Under the bunk you will find a nice storage area for spare linens, towels, blankets or clothing. There is a deep hanging locker along with drawers and cabinets for additional storage. There is a seat to port making a nice retreat for the owner. The cabin is well

lit and well ventilated with two overhead hatches along with several opening ports.

---

## ISLAND PACKET 420 MASTER HEAD

---

The forward, master ensuite head features a large separate shower stall. The marine toilets both forward and after have a new Purisan waste treatment system along with a new macerator pump and new waste hoses. There is a deep S/S sink, vanity and storage lockers and drawers. The overhead hatch and opening ports provide good ventilation.

---

## ISLAND PACKET 420 SAILS & RIGGING

---

\* Stainless cables, turnbuckles and chain plates\* New mainsail, genoa and staysail, 2015\* In-mast furling main, furling genoa\* Rigging inspected 2016\* New running rigging, 2015\* Whisker pole\* Winches: Lewmar ST54 (2), Lewmar SY44 (2), Lewmar ST16, Harken ST40 (2)\* Boom vang

---

## ISLAND PACKET 420 ENGINE

---

The boat has a 75hp Yanmar turbo diesel, 4 cylinder, fresh-water cooled engine. The engine is serviced regularly and recently had a complete service and inspection. The engine has new exhaust hoses.

---

## ISLAND PACKET 420 GROUND TACKLE

---

\* 33lb. Rocna with approx. 150' of 3/8" chain\* 20 lb. Danforth with approx. 200' of 5/8" rode\* Lofrans electric windlass with new motor

---

## ISLAND PACKET 420 ON DECK

---

\* Canvas covers: (8) hatch covers\* Bimini top\* Full cockpit enclosure with Strata Glass\* Cockpit cushions and table\* 2 Solar panels\* Docklines & Fenders\* Magma grill\* Boat hook\* Integrated swim platform with ladder\* Emergency Tiller\* Dessalator D60 Watermaker

---

## DISCLAIMER

---

The Company offers the details of this vessel in good faith but cannot guarantee or warrant the accuracy of this information nor warrant the condition of the vessel. A buyer should instruct his agents, or his surveyors, to investigate such details as the buyer desires validated. This vessel is offered subject to prior sale, price change, or withdrawal without notice.

---

## Exclusions

---

Owner's personal belongings.

---

## Disclaimer

---

The Company offers the details of this vessel or yacht in good faith but cannot guarantee or warrant the accuracy of this information nor warrant the condition of the vessel. A buyer should instruct his representatives, agents, or his surveyors, to investigate such details as the buyer desires validated. This vessel or yacht is offered subject to prior sale, price change, or withdrawal without notice.

# PHOTOS

**#1-2002 Island Packet 420 STAY FOOLISH**



**#2-2002 Island Packet 420 STAY FOOLISH  
stern**



**#3-island-packet-420-layout**



**#4-2002 Island Packet 420 STAY FOOLISH  
Master head**





**#5 2002 Island Packet 420 STAY FOOLISH  
Master shower**



**#6-2002 Island Packet 420 STAY FOOLISH  
Master cabin**



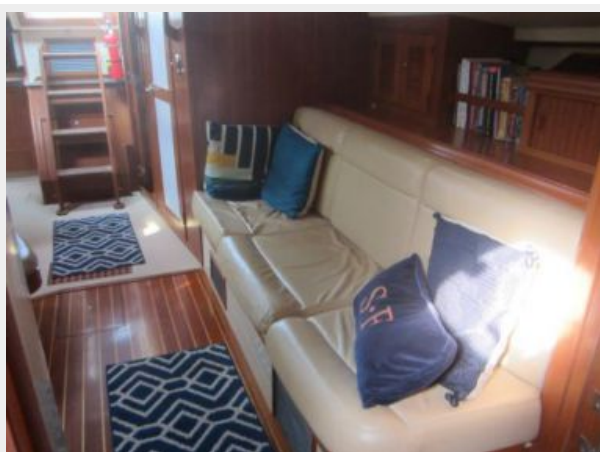
**#7 2002 Island Packet 420 STAY FOOLISH  
Storage**



**#8 2002 Island Packet 420 STAY FOOLISH  
Cabin**



**#9 2002 Island Packet 420 STAY FOOLISH  
Port settee**



**#10 2002 Island Packet 420 STAY FOOLISH  
Stbd. settee**





**#11 2002 Island Packet 420 STAY FOOLISH  
Nav. Desk**



**#12 2002 Island Packet 420 STAY FOOLISH  
Nav. station**



**#13 2002 Island Packet 420 STAY FOOLISH  
Galley**



**#14 2002 Island Packet 420 STAY FOOLISH  
Galley-2**



**#15 2002 Island Packet 420 STAY FOOLISH  
Stove**



**#16 2002 Island Packet 420 STAY FOOLISH  
Icebox**



**#17 2002 Island Packet 420 STAY FOOLISH**  
**Aft cabin**



**#18 2002 Island Packet 420 STAY FOOLISH**  
**aft cabin storage**



**#19 2002 Island Packet 420 STAY FOLISH**  
**Cockpit seating**



**#20 2002 Island Packet 420 STAY FOOLISH**  
**Cockpit**



**#21 2002 Island Packet 420 STAY FOOLISH**  
**Entry**



**#22 2002 Island Packet 420 STAY FOOLISH**  
**Helm**





**#23 2002 Island Packet 420 STAY FOOLISH**  
**Helm seat**



**#24 2002 Island Packet 420 STAY FOOLISH**  
**In-mast furling mainsail**



**#25 2002 Island Packet 420 STAY FOOLISH**  
**Ground tackle**



**#26 2002 Island Packet 420 STAY FOOLISH**  
**Furling staysail**



**2002 Island Packet 420 STAY FOOLISH aft head**



# CONTACTS

---

Andrey Shestakov, leading yacht broker of the sales department of Shestakov Yacht Sales Inc. Shestakov Yacht Sales Inc., the official representative of the Miami/Fort Lauderdale FL headquarters.

## Contact details

---

Email: [andrey@shestakovyachtsales.com](mailto:andrey@shestakovyachtsales.com)

Web: [shestakovyachtsales.com/en/](http://shestakovyachtsales.com/en/)

## Telephones

---

USA: +1(954)274-4435

## Office hours

---

Monday – Saturday: **9:00 - 21:00** EDT

Sunday: **closed**

## Address

---



Harbour Towne Marina, 850 NE 3rd St,  
STE 213, Dania, FL 33004