

# QUANTUM OF SOLACE — TURQUOISE YACHTS



**Builder:** TURQUOISE YACHTS

**Year Built:** 2012

**Model:** Mega Yacht

**Price:** PRICE ON APPLICATION

**Location:** Italy

**LOA:** 238' 4" (72.63m)

**Beam:** 39' 5" (12.00m)

**Min Draft:** 0' 0" (0.00m)

**Max Draft:** 13' 2" (4.00m)

**Cruise Speed:** 15 Kts. (17 MPH)

**Max Speed:** 17 Kts. (20 MPH)

Our experienced yacht broker, Andrey Shestakov, will help you choose and buy a yacht that best suits your needs **QUANTUM OF SOLACE — TURQUOISE YACHTS** from our catalogue. Presently, at Shestakov Yacht Sales Inc., we have a wide variety of yachts available on our sale's list. We also work in close contact with all the big yacht manufacturers from all over the world.

If you would like to buy a yacht **QUANTUM OF SOLACE — TURQUOISE YACHTS** or would like help answering any questions concerning purchasing, selling or chartering a yacht, please call **+1(954)274-4435**

# TABLE OF CONTENTS

TABLE OF CONTENTS	2
SPECIFICATIONS	5
Overview	5
Basic Information	6
Dimensions	6
Speed, Capacities and Weight	6
Accommodations	6
Hull and Deck Information	7
Engine Information	7
DETAILED INFORMATION	8
Accommodations	8
Machinery	8
Auxiliary Machinery & Electrical System	8
Tank Capacities (approximate)	8
Ancillary Equipment	9
Safety & Security Equipment	9
Communication Equipment	9
Navigation Equipment	10
Deck Equipment	10
Audio/Visual Entertainment Systems	11
Office Equipment	11
Domestic Equipment	12
Other Equipment	12
Tenders & Watersports Equipment	12
Exclusions	12
Disclaimer	12
PHOTOS	13
Quantum of Solace_aerials_1	13

Quantum of Solace_aerials_14	13
Quantum of Solace_dining_3	13
Quantum of Solace_guest_cabin_2_4	13
Quantum of Solace_guest_cabin_3_2	13
Quantum of Solace_guest_cabin_4_4	13
Quantum of Solace_master_head_9	14
Quantum of Solace_master_office_1	14
Quantum of Solace_master_office_2	14
Quantum of Solace_master_stateroom_5	14
Quantum of Solace_master_stateroom_8	14
Quantum of Solace_salon_2	14
Quantum of Solace_salon_5	15
Quantum of Solace_salon_9	15
Quantum of Solace_skylounge_6	15
Quantum of Solace_skylounge_13	15
Quantum of Solace_skylounge_17	15
Quantum of Solace_skylounge_aft_deck_1	15
Quantum of Solace_skylounge_aft_deck_7	16
Quantum of Solace_skylounge_foyer_4	16
Quantum of Solace_spa_16	16
Quantum of Solace_sun_deck_4	16
Quantum of Solace_sun_deck_15	16
Quantum of Solace_sun_deck_17	16
Quantum of Solace_sun_deck_25	17
Quantum of Solace_sun_deck_31	17
large_2796402	17
large_2796403	17
QUANTUM-OF-SOLACE-GA-05-2021	17
Quantum of Solace_vip_2_head_3	17

CONTACTS	18
-----	-----
Contact details	18
-----	-----
Telephones	18
-----	-----
Office hours	18
-----	-----
Address	18
-----	-----

---

# SPECIFICATIONS

---

## Overview

---

Launched in 2012 at the Turquoise shipyard, QUANTUM OF SOLACE is a head-turning yacht with a beautiful exterior and interior by H2 Yacht Design.

She comfortably accommodates 14 guests in her 7 luxurious staterooms. The full beam master suite is located on the upper deck and features a spectacular bathroom and two luxurious dressing rooms, as well as a balcony on each side. There are a further 6 luxurious staterooms on the main deck, offering great flexibility for sleeping arrangements. On the main deck is the hugely impressive main salon with double-height atrium. On the lower deck is the full beam spa and beach club area, including a fold-down door that opens to water level. Within the spa can be found a gym, hammam and sauna, jacuzzi and massage room. For sun-lovers there is a vast sun deck, with a 5m swimming pool, featuring a contra flow swimming system.

## Features

- Full beam master suite on the upper deck with balcony on each side
- Independent owner's office
- Beach club with fold-down door opening to water level
- Double-height atrium in the main salon
- Huge sundeck with bar and shaded dining area
- 5m x 2m contra flow pool on sundeck
- Gym
- Spa with hammam and sauna, jacuzzi and massage room
- Disco on the sundeck with lights, smoke machine, DJ equipment
- Large toys selection
- Elevator
- Hydraulic swim platform
- Zero-speed stabilisers

---

## Basic Information

---

<b>Category:</b> Mega Yacht	<b>Model Year:</b> 2012
<b>Year Built:</b> 2012	<b>Refit Year:</b> 2020
<b>Refit Type:</b> Full Repaint & interior upgrade	<b>Country:</b> Italy
<b>Fly Bridge:</b> Yes	<b>Helipad:</b> Yes

---

## Dimensions

---

<b>LOA:</b> 238' 4" (72.63m)	<b>LWL:</b> 0' 0" (0.00m)
<b>LOD:</b> 0' 0" (0.00m)	<b>Beam:</b> 39' 5" (12.00m)
<b>Min Draft:</b> 0' 0" (0.00m)	<b>Max Draft:</b> 13' 2" (4.00m)
<b>Clearance:</b> 0' 0" (0.00m)	<b>MFG Length:</b> 0' 0" (0.00m)

---

## Speed, Capacities and Weight

---

<b>Cruise Speed:</b> 15 Kts. (17 MPH)	<b>Cruise Speed Range:</b> 4750
<b>Max Speed:</b> 17 Kts. (20 MPH)	<b>Displacement:</b> 3066630.06442 Pounds
<b>Gross Tonnage:</b> 1730 Pounds	<b>Water Capacity:</b> 9510.193872 Gallons
<b>Fuel Capacity:</b> 53626.926556 Gallons	

---

## Accommodations

---

<b>Total Cabins:</b> 7	<b>Sleeps:</b> 14
<b>Crew Sleeps:</b> 18	

---

## Hull and Deck Information

---

**Hull Material:** Steel

**Exterior Designer:** H2 Yacht Design

**Interior Designer:** H2 Yacht Design

---

## Engine Information

---

**Engines:** 2

**Manufacturer:** Caterpillar

**Model:** 3516B

**Engine Type:** Inboard

**Fuel Type:** Diesel

## DETAILED INFORMATION

### Accommodations

- Full beam owner's stateroom with balconies both port and starboard located on the bridge deck;- 2 x VIP suites, with en suite bathroom and walk-in wardrobes;- 2 x Double cabins, with en suite bathrooms located on the main deck;- 1 x Twin cabin with en suite bathroom located on the main deck;- 1 x Children's stateroom/playroom with en suite bathroom;- Accommodation for 18 crew members.

### Machinery

Main Engines	2 x Caterpillar 3516B, 2,447 hp. 1,825 kW @ 1,600 rpm Engine Hours – July 2020:Port: 4,093 hoursStbd: 4,096 hours
Gear Boxes	ZF, 7541 Ratio 3.96:1
Shafts	Bruntons, Lo-Rez, 32.5RT
Propellers	5 blade, Class 1
Consumptions	300 litres/hour @ economical speed 450 litres/hour @ cruising speed 900 litres/hour @ maximum speed

### Auxiliary Machinery & Electrical System

Main Generators	4 x Caterpillar 200 kW C9, in separate rooms. Generator Hours - July 2020:Gen 1: 9,179 hours Gen 2: 8,843 hours Gen 3: 8,827 hours Gen 4: 9,029 hours
Emergency Generator	1 x Cummins 138kW
Electricity	400vAC / 230vAC / 50hZ
Shore Power	2 x 400vAC, 3 phase Atlas shore power converter 2019

### Tank Capacities (approximate)

Fuel	203,000 litres
Water	36,000 litres
Watermakers	20,000 litres
Clean Lub Oil	7,000 litres
Dirty Lub Oil	2,100 litres
Grey Water	2 x 14,900 litres
Black Water	1,100 litres



## Ancillary Equipment

---

Steering system	Data Hidrolik
Rudder Angle Indicators	Sperry Marine
Bow Thruster	HRP 190 kW
Stabiliser	Quantum ARC 3001 Zero Speed Stabilizers
Fuel Filters	Racor
Fuel Oil Separator	2 x Alfa Laval MAB 103
Oil/Water Separator	RWO, 1,000 litres per hour
Bilge Pump	Bombas Azcue, Wilo
Fire Pump	Bombas Azcue
Boilers	Ganeshi
Sewage Treatment	Hamann
WC's	Jets
A/C	Heinen and Hopman ducted air conditioning in public and owner's area
Ventilation	Fan coils in crew area

## Safety & Security Equipment

---

Medical Equipment	Per MCA requirements
Firefighting Equipment	Dry powder/CO2
Fixed Extinguishing System	Marioff Hi-Fog
Fire Detection System	Consilium
Alarms & Monitoring Systems	Smart Automation
CCTV	Panasonic
Cameras	14
Monitors	ECR and wheelhouse
Ship's Safe	Owner's stateroom
Life Rafts	4 x 35 persons
Life Rings	8 x white
EPIRBS	2 x Simrad
SARTS	2 x McMurdo

## Communication Equipment

---

SATCOM	2 x Seatel V-SAT by ANT2 x Seatel TVRO by ANT
GMDSS	1 x Sailor Sat Com CSailor VHF and MF/HFGMDSS for A3 navigation area
Cellular System	2 x 4G
VHF Radiotelephones	2 x Sailor Fixed3 x Simrad Handheld
SSB Radiotelephone	Sailor
Watchkeeping	Navguard
Receiver	Navguard
Telephone	Panasonic
UHF Communications	18 x ICOM

## Navigation Equipment

Magnetic Compass	Anschutz
Gyro Compass	Anschutz
Automatic Pilot	Anschutz Nautopilot
Log	Sperry Marine
Depth Sounder	Sperry Marine
Radar	2 x Vision Master, X-Ban Radars, 7' antennas, 25kW
Black Boxes	2 x Raytheon ARPA Black Boxes
Chart Plotter	Vision Master Sperry
DGPS	2 x SAAB-R4
NAVTEX	SRC
Wind Instruments	SIMRAD
Weather Station	Airmar
AIS	Raytheon SAAB

## Deck Equipment

Anchor Windlass	Data Hidrolik
Aft Warping	Data Hidrolik
Capstans	Data Hidrolik
Ground Tackle	Data Hidrolik
Boat Crane & Davits	Sanguineti, 2 x 4,200kg capacity full beam overhead cranesSanguineti, 2 x 1,00kg SOLAS rescue cranes
Passerelle	Nautical Structures, 6m (20')

Swimming Platform	Hydraulic Opacmare swim stairs
Slide Boarding Ladder	Sanguineti
Accomodation Lader	Sanguineti
Searchlight	Sanshin S.D. Sapan
Underwater Lights	16 x Underwater Lights
Awning	2 x BY Bruno & Pascal Antibes (Sun Deck & Bridge Deck)

## Audio/Visual Entertainment Systems

All guest areas have a DVD player, “play your media” USD connection, Cisco phone and availability to connect any HDMI output device.

Super disco on sun deck with lights, smoke machines, professional DJ equipment and incredible sound systems including Karaoke machine.

Main Salon	Creston system, Apple TV, Airplay on 3 areas, Kodi, Kartina
Brige Deck Lounge	Creston system, Apple TV, Airplay on 2 areas, Kodi, full cinema audiosystem, 70 inch TV and Kartina
Sun Deck	Creston system, Apple TV, Airplay, Kodi, 4 mic karaeoke system, DMXlighting and Kartina
Owners Cabin	Creston system, Apple TV, Airplay on 3 areas, Kodi, full cinema audiosystem, 70 inch TV and Kartina
Guest Cabins	All guest cabins have Creston system, Apple TV, Airplay, Kodi and Kartina
Captain’s Cabin	Equipped with Sky IPTV and surround audio system
Crew Cabins	All cabins are equipped with audio system and iPad to watch
Crew Mess	Creston system, Apple TV, central computer, Sky IPTV, surround system
Galley	Equipped with audio system
Laundry	Equipped with audio system

## Office Equipment

Bridge Deck	3 x HP computers & printers
Crew Mess	1 x HP printer1 x HP laptop
Computers	In total 8 x HP laptops

## Domestic Equipment

---

Main Galley	6 ring induction hob Unox oven Electrolux dishwasher Refrigerators and freezers Siemens microwave
Laundry	3 x Miele commercial washers, 8kg each 3 x Miele commercial dryers, 8kg each Miele Roller Iron
Pantry	2 x Fridges 2 x Dishwashers 2 x Icemakers 2 x Microwaves
Bridge Deck Pantry	1 x Microwave 1 x Phillips coffee machine
Crew Mess	1 x Microwave 1 x Phillips coffee machine

## Other Equipment

---

Jacuzzi Dip Pool	5m x 2m
Elevator	Elevator from lower spa deck to bridge deck

## Tenders & Watersports Equipment

---

Tenders	7m Novurania RIB with Volvo D3220 diesel engine 8m Royal Limo tender with Yanmar 260hp diesel engine
Watersports Equipment	Jet skis 2 x Kawasaki Ultra 300 LX Various skis and inflatables toys

## Exclusions

---

Owner's personal belongings.

## Disclaimer

---

The Company offers the details of this vessel or yacht in good faith but cannot guarantee or warrant the accuracy of this information nor warrant the condition of the vessel. A buyer should instruct his representatives, agents, or his surveyors, to investigate such details as the buyer desires validated. This vessel or yacht is offered subject to prior sale, price change, or withdrawal without notice.

# PHOTOS

Quantum of Solace\_aerials\_1



Quantum of Solace\_aerials\_14



Quantum of Solace\_dining\_3



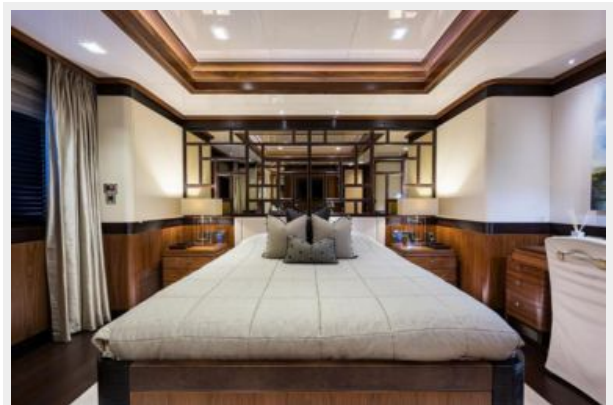
Quantum of Solace\_guest\_cabin\_2\_4



Quantum of Solace\_guest\_cabin\_3\_2



Quantum of Solace\_guest\_cabin\_4\_4



Quantum of Solace\_master\_head\_9



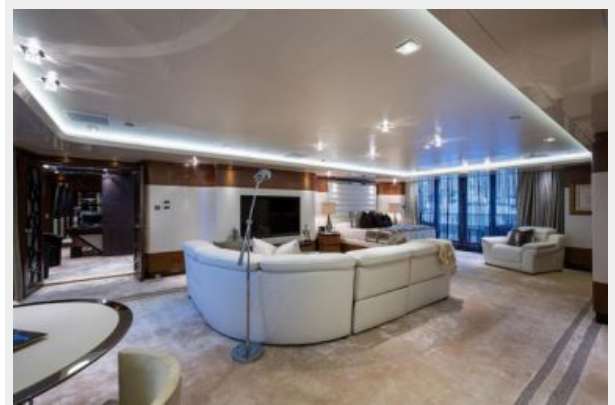
Quantum of Solace\_master\_office\_1



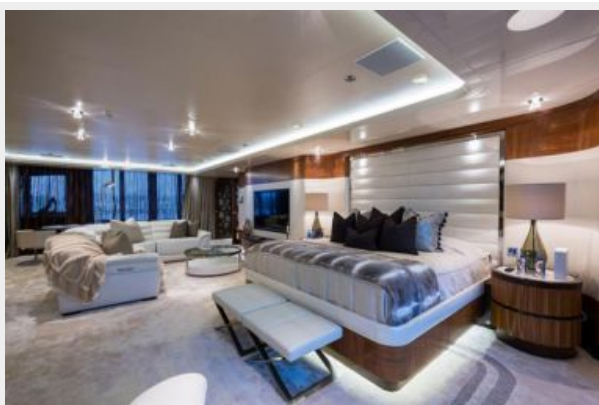
Quantum of Solace\_master\_office\_2



Quantum of Solace\_master\_stateroom\_5



Quantum of Solace\_master\_stateroom\_8



Quantum of Solace\_salon\_2



Quantum of Solace\_salon\_5



Quantum of Solace\_salon\_9



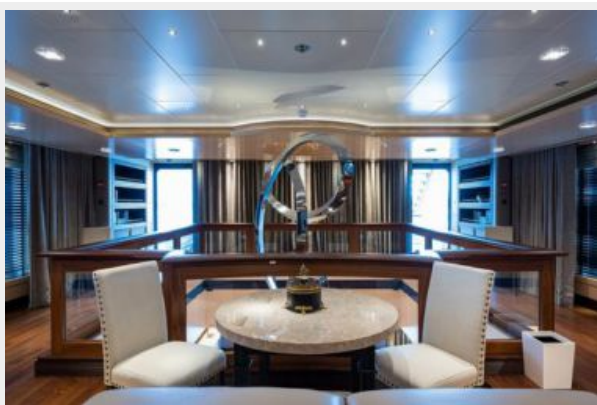
Quantum of Solace\_skiylounge\_6



Quantum of Solace\_skiylounge\_13



Quantum of Solace\_skiylounge\_17



Quantum of Solace\_skiylounge\_ aft\_deck\_1



Quantum of Solace\_skyounge\_aft\_deck\_7



Quantum of Solace\_skyounge\_foyer\_4



Quantum of Solace\_spa\_16



Quantum of Solace\_sun\_deck\_4



Quantum of Solace\_sun\_deck\_15



Quantum of Solace\_sun\_deck\_17





Quantum of Solace\_sun\_deck\_25



Quantum of Solace\_sun\_deck\_31



large\_2796402



large\_2796403



Quantum of Solace\_vip\_2\_head\_3



QUANTUM-OF-SOLACE-GA-05-2021



# CONTACTS

---

Andrey Shestakov, leading yacht broker of the sales department of Shestakov Yacht Sales Inc. Shestakov Yacht Sales Inc., the official representative of the Miami/Fort Lauderdale FL headquarters.

## Contact details

---

Email: [andrey@shestakovyachtsales.com](mailto:andrey@shestakovyachtsales.com)

Web: [shestakovyachtsales.com/en/](http://shestakovyachtsales.com/en/)

## Telephones

---

USA: +1(954)274-4435

## Office hours

---

Monday – Saturday: **9:00 - 21:00** EDT

Sunday: **closed**

## Address

---



Harbour Towne Marina, 850 NE 3rd St,  
STE 213, Dania, FL 33004