

NOVELA — CBI NAVI



Builder: [CBI NAVI](#)

Year Built: 2000

Model: Motor Yacht

Price: PRICE ON APPLICATION

Location: Croatia

LOA: 100' 5" (30.60m)

Beam: 23' 8" (7.20m)

Max Draft: 7' 3" (2.20m)

Cruise Speed: 12 Kts. (14 MPH)

Max Speed: 15 Kts. (17 MPH)

Our experienced yacht broker, Andrey Shestakov, will help you choose and buy a yacht that best suits your needs **Novela — CBI NAVI** from our catalogue. Presently, at Shestakov Yacht Sales Inc., we have a wide variety of yachts available on our sale's list. We also work in close contact with all the big yacht manufacturers from all over the world.

If you would like to buy a yacht **Novela — CBI NAVI** or would like help answering any questions concerning purchasing, selling or chartering a yacht, please call **+1(954)274-4435**

TABLE OF CONTENTS

TABLE OF CONTENTS	2
SPECIFICATIONS	5
Overview	5
Basic Information	6
Dimensions	6
Speed, Capacities and Weight	6
Accommodations	6
Hull and Deck Information	6
Engine Information	7
DETAILED INFORMATION	8
Accommodations	8
Tenders and Watersports	8
Audio & Visual Equipment	8
Machinery	9
Generators & Auxiliary equipment	9
Ancillary equipment	10
Safety & Security equipment	10
Communication equipment	10
Navigation equipment	10
Galley and Domestic equipment	11
Special equipment	11
Exclusions	11
Disclaimer	11
PHOTOS	13
2	13
3	13
4	13
5	13

6	13
7	13
NOVELA-YACHT-IYC-SALON4	14
NOVELA-YACHT-IYC-SALON	14
NOVELA-YACHT-IYC-SALON3	14
NOVELA-YACHT-IYC-SALON2	14
11	14
12	14
13	14
14	14
15	15
16	15
17	15
18	15
20	15
19	15
21	15
22	15
23	16
24	16
26	16
25	16
27	16
28	16
29	16
31	16
CONTACTS	17
Contact details	17
Telephones	17

Office hours	17
Address	17

SPECIFICATIONS

Overview

Strong and elegant with opulent touches and large outdoor spaces, 100'5"/30.6m Novela is a versatile, family-friendly yacht with proven success on the charter market. She represents an attractive opportunity for an owner looking for incredible volume, stylish interiors and stability on the high seas. Hosting eight guests and five crew, Novela's outdoor spaces are truly outstanding. Boarding Novela brings you to the spacious aft deck, which can comfortably sit 10 for cocktails around her beautifully designed coffee tables or 12 for formal dining when the coffee tables convert to a large dining table. Her large stern flybridge area hosts a further dining table with an electric sun awing system, BBQ and, to work off the delights of the chef, an elliptical cross trainer with one of the best views in the house. The Jacuzzi, surrounded by a large sunbathing area, invites guests to lie back, take in the sun and chill out. The top deck offers the hidden surprise of a large sun pad, ideal for taking in the beautiful sites in complete privacy. In front of the pilothouse is located a further bow seating area, perfect for enjoying a cocktail while cruising. Forward of this area are a further two huge sun pads located on the bow for soaking up the sun with a little breeze whilst cruising. Built by Italian shipyard CBI Navi in 2000, Novela's original design was crafted by Luca Dini Design. She underwent major refits in 2013 and 2019 overseen by Sasa Milosavljevic, and has enjoyed constant upgrades every other year since to keep all areas in top condition. A steel displacement hull with bulbous bow and aluminum superstructure give Novela great seakeeping capability. An ultra-modern stabilization system reduces roll motion onboard guaranteeing optimized comfort for guests both underway and at anchor. With a cruising speed of 12.5 knots (maximum 15 knots) and a range of 3,500 nautical miles, Novela provides the freedom for uninhibited exploration and life-affirming adventure; compact enough to anchor in secluded bays but stable enough to safely tackle rough seas. For indoor socializing, the large, light-filled main salon is a fantastic communal space, with casual seating, a cocktail bar and an entertainment system. The upper deck is home to the pilothouse and a significantly larger sky lounge than those found on comparable sized yachts. Alongside stretching vistas, this space houses relaxed L-shaped seating and a large LED TV that is discreetly integrated for when not in use. Guests will enjoy the versatile layout of the cabins, which can be used as two doubles and two twins, or four doubles. Each room is tastefully decorated with elegant touches, mirrors and large windows providing an abundance of light morning to night. Those keen to leverage Novela's vast array of water equipment will not be disappointed. Her toys include, but are not limited to, kneeboards, wakeboards, skis, mono skis, paddleboards, two SeaBobs, a Fliteboard, two Jet Skis and a hover board for lasting memories and heart-racing adventures. A 7.8m Brigg Eagle tender with her 300hp Mercury Verrado outboard also makes days trips and shore excursions convenient and comfortable. Novela offers the unique opportunity to own a substantial yacht with personality, performance and passion.

Basic Information

Category: Motor Yacht

Sub Category: Flybridge

Model Year: 2000

Year Built: 2000

Refit Year: 2019

Refit Type: INTERIOR

Country: Croatia

Fly Bridge: Yes

Dimensions

LOA: 100' 5" (30.60m)

Beam: 23' 8" (7.20m)

Max Draft: 7' 3" (2.20m)

Speed, Capacities and Weight

Cruise Speed: 12 Kts. (14 MPH)

Cruise Speed Range: 3500

Max Speed: 15 Kts. (17 MPH)

Gross Tonnage: 197 Pounds

Water Capacity: 2377.548468 Gallons

Fuel Capacity: 10333.353986032 Gallons

Accommodations

Total Cabins: 4

Sleeps: 8

Crew Sleeps: 5

Hull and Deck Information

Hull Material: Steel

Exterior Designer: Luca Dini

Interior Designer: Luca Dini

Engine Information

Engines: 2

Manufacturer: Caterpillar

Model: 3412C

DETAILED INFORMATION

Accommodations

Cabins: 4

Double: 2, Master / VipTwin: 2 (Both can convert into doubles)Upper / Low: Upper - Master, Lower - VIP / 2 Twins Berths: 8Single: 4Bathrooms: 4Day toilet: 1Crew Cabins: 3Crew Berths: 5Crew wc/shower: 2Crew Mess: 1

Tenders and Watersports

- Tender: Brigg Eagle 7.2 m
- Outboard: Mercury Verado 300 HP
- Jet Ski: Sea Doo RXP-X 260 HP / Sea Doo RXT-X 260 HP
- Gangway Sanguineti Chiavari / SC Marine 2 x Sea Bobs (2017)
- 1 x Sailing dingy (2014)
- 2 x 10 6ft Paddleboards
- 2 x Wake board 2 x Kneeboard

Audio & Visual Equipment

Salon

- TV: Samsung 55" ES 800 Series 8
- DVD: Playstation / Blue ray
- Stereo: NAD
- Entertainment Center: Navcom
- Audio system: Apple Air play
- Speakers: B&O

Master cabin

- TV: 46" ES 8000 Series 8
- DVD: Playstation / Blue ray
- Stereo: NAD
- Entertainment Center: Navcom
- Audio system: Apple Air play

- Speakers: BOSE

VIP cabin

- TV: 46" ES 8000 Series 8
- DVD: Playstation / Blue ray
- Stereo: NAD Entertainment Center: Navcom
- Audio system: Apple Air play
- Speakers: BOSE

Guest cabin

- Entertainment Center: Navcom
- Audio system: Apple Air play
- Speakers: BOSE

Machinery

- Engines: Caterpillar 3412C
- Power: 2 x 1554 HP
- Consumption: 150 l/h
- Fuel: Diesel
- Engine hours: STB 3420, PORT 3413
- Eng. Controls: Kobelt
- Propellers: 4 Blade Twin screw
- Bow thruster maker: Mannesmann Rexroth
- Gearbox: ZF type BW255
- Stabilizers: Side Power SPS93 VF1650 Vector Fins

Generators & Auxiliary equipment

- 1 x Northern Lights M44ST-HE-50 kW (6988 h) generator
- 1 x Kohler 35 EF KO ZD (0 h) generator

- Engine batteries 560 AMP/h
- Service batteries: Ciak 24V
- Battery charger: Phase three
- Shore power: 380 V

Ancillary equipment

- Anchors: 2 x Original Pool 150 kg
- Anchor chain: 2 x 150 m x 14 mm
- Aft winches: 2 x F.E.M.M. 4 kW
- Conditioning water: Idromar 500 l/h

Safety & Security equipment

- Life rafts: Zodiac Solas B 16 man ZMEC 16 TO XTREAM
- Life jackets: 16 Lalizas Marine auto inflatable jackets
- Fire extinguishes: 14 dry powder / carbon dioxide foam
- Fire alarm: CS / Fire came security

Communication equipment

- VHF: Sailor 6222 DSC
- SSB radio: Skanti TRP 7000
- GSM Phone: Motorola
- EPIRB: Sailor SE 406 II

Navigation equipment

- Radar: Furuno FR-2125 XBAND ARPA, Furuno FUR-DRSYA
- Autopilot: Anschutz Pilotstar D
- GPS: Furuno GP-330B
- Plotter: Furuno Navenet 3D Gyro.
- Compass: Anschutz
- Fish Finder: Furuno DFF1
- Speed Log.: B&G
- Navtex: Furuno Fax 30
- Weather FAX: Furuno Fax 30 Weather fax / Nautex
- Satellite TV: KNS S8

Galley and Domestic equipment

- Bosch 181 l refrigerator
- Gorenje 390 l refrigerator
- Liebherr 436 l refrigerator
- Deep freezers: Liebherr 362 l
- Ice maker: Virti Frigo / Scotsman
- Cooker: Miele
- No. of burners: 6
- Oven: Miele
- Dishwasher: Miele
- Laundry: Miele washer, Dryer x 2 Miele / Bosch
- Sky bar: Top loading built in Fridge unit
- Barbeque: 60 cm x 60 cm gas grill
- Mini bars: Euro cave, wine cooler, Vitri Frigo winecellar
- Counter top Surface: Granite

Special equipment

- Jacuzzi
- BBQ
- Mini bar

Exclusions

Owner's personal belongings.

Disclaimer

The Company offers the details of this vessel or yacht in good faith but cannot guarantee or warrant the accuracy of this information nor warrant the condition of the vessel. A buyer should instruct his representatives, agents, or his surveyors, to investigate such details as the buyer desires validated. This vessel or yacht is offered subject to prior sale, price change, or withdrawal without notice.

PHOTOS

2



3



4



5



6



7



NOVELA-YACHT-IYC-SALON4



NOVELA-YACHT-IYC-SALON



NOVELA-YACHT-IYC-SALON3



NOVELA-YACHT-IYC-SALON2



11



12



13



14



15



16



17



18



19



20



21



22



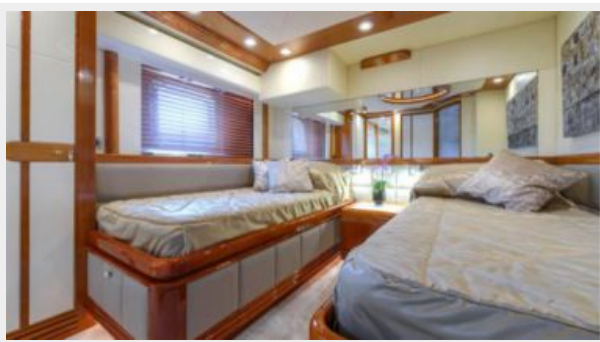
23



24



25



26



27



28



29



31



CONTACTS

Andrey Shestakov, leading yacht broker of the sales department of Shestakov Yacht Sales Inc. Shestakov Yacht Sales Inc., the official representative of the Miami/Fort Lauderdale FL headquarters.

Contact details

Email: andrey@shestakovyachtsales.com

Web: shestakovyachtsales.com/en/

Telephones

USA: +1(954)274-4435

Office hours

Monday – Saturday: **9:00 - 21:00** EDT

Sunday: **closed**

Address



Harbour Towne Marina, 850 NE 3rd St,
STE 213, Dania, FL 33004