

ZENJI — PERINI NAVI



Судостроитель: [PERINI NAVI](#)

Год постройки: 2004

Модель: Крейсерский кеч

Цена: **ЦЕНА ЯХТЫ ПО ЗАПРОСУ**

Местонахождение: United States

Длина общая: 183' 9" (56.00m)

Ширина: 37' 9" (11.50m)

Мин. осадка: 13' 2" (4.00m)

Макс. осадка: 31' 10" (9.70m)

Крейс. скорость: 11 Kts. (13 MPH)

Макс. скорость: 15 Kts. (17 MPH)

Купить **ZENJI — PERINI NAVI** а также выбрать подходящую вам яхту из нашего каталога яхт вам поможет опытный яхтенный брокер Андрей Шестаков. На сегодняшний день компания **Shestakov Yacht Sales Inc.** имеет большое количество яхт в **собственном списке продаж**, а также тесно сотрудничает со всеми крупными яхтенными производителями по всему миру.

Для того чтобы купить яхту **ZENJI — PERINI NAVI** а также проконсультироваться по любому вопросу связанному с покупкой, продажей, чартером яхт позвоните по телефону **+7(918)465-66-44**.

ОГЛАВЛЕНИЕ

ОГЛАВЛЕНИЕ	2
ХАРАКТЕРИСТИКИ	3
Обзор	3
Основная информация	3
Размеры	4
Скорость, вместимость и масса	4
Размещение	4
Корпус и палуба	4
Информация о двигателе	5
ПОДРОБНОЕ ОПИСАНИЕ	6
DETAILED DESCRIPTION	6
Исключения	14
Отказ от ответственности	14
ФОТОГРАФИИ	15
zenji sail plan	19
zenji ga med	20
КОНТАКТЫ	21
Контактная информация	21
Телефоны	21
Время работы	21
Адрес	21

ХАРАКТЕРИСТИКИ

Обзор

The 56m Perini Navi is the most successful mega sailing yacht design of all time with 10 hulls delivered over 7 years. Fabio Perini set the bar high when he married the attributes of a large volume motorsailor with the naval architecture of Ron Holland to produce a comfortable and fast sailing yacht that can be easily managed under sail by one person. Perini created a floating masterpiece unrivalled in beauty, and whose form and functionality remains to this day as desirable as when she was launched.

Zenji offers 6 guest staterooms, sleeping 14 guests plus 6 crew cabins for up to 11 crew. The social areas aboard Zenji are uniquely functional at rest or under sail. The flybridge is the focal point for all once the vessel is underway, from which guests can enjoy a brisk sail in complete comfort and safety with unobstructed 360 degree views. The flybridge also offers sunbathing, a jacuzzi, guest seating and full navigation stations with dual helms. After sailing, guests may retire to the aft cockpit for cocktails and relaxation. This slightly recessed space provides just enough detachment from the outside world to provide intimacy while dining whilst still allowing guests to take in the surrounding beauty of any port or anchorage.

Another feature that Zenji offers, which owners and guests will quickly learn to appreciate, is the fold down side shell boarding platform which provides easy boarding access to the tenders from a protected and secure area port side aft. The platform also serves a modest beach club for water sports and swimming.

Zenji has been maintained to the highest standards her entire life and has just completed her 15 year ABS special survey in 2019 including full paint, masts, superstructure, hull, and bottom. Her rigging has been completely and thoroughly upgraded and inspected. Mechanical systems were serviced, engines overhauled, generators replaced. Zenji is standing tall, ready to travel anywhere in the world with her new owners in complete comfort and safety.

Основная информация

Тип судна: Крейсерский кеч

Модельный год: 2004

Год постройки: 2004

Год обновления: 2019

Страна: United States

Размеры

Длина общая: 183' 9" (56.00m)

Длина по ватерлинии: 152' 11" (46.60m)

Ширина: 37' 9" (11.50m)

Мин. осадка: 13' 2" (4.00m)

Макс. осадка: 31' 10" (9.70m)

Скорость, вместимость и масса

Крейс. скорость: 11 Kts. (13 MPH)

Дальность на крейсерской скорости:
3700

Макс. скорость: 15 Kts. (17 MPH)

Водоизмещение: 1146000 Pounds

Чистый вес: 499 Pounds

Вместимость воды: 4504.1334866
Gallons

Объем топливного бака: 15638.9854784
Gallons

Размещение

Всего кают: 6

Спальные места: 12

Каюты экипажа: 6

Спальных мест экипажа: 11

Корпус и палуба

Материал корпуса: Aluminum

Материал палубы: Teak

Дизайнер корпуса: Ron Holland

Дизайнер экстерьера: Ron Holland

Дизайнер интерьера: Perini Navi

Информация о двигателе

Двигатели: 2

Производитель: Duetz/Manheim Marine

Модель: TBD 616 V12 4-Stroke

Тип двигателя: Inboard

Тип топлива: Diesel

ПОДРОБНОЕ ОПИСАНИЕ

DETAILED DESCRIPTION

```
#edmiston-espec { font-family: 'Helvetica Neue LT Std', 'Sans'; font-weight: 200; font-style:
normal; text-align: justify; text-justify: inter-word; line-height: 1.5em; color: #444; } #edmiston-
espec table { border-spacing: 0px; border-collapse: collapse; } #edmiston-espec td { text-align:
left; vertical-align: top; padding: 0px; margin: 0px; line-height: 1.5em; } #edmiston-espec th { text-
align: left; vertical-align: top; padding: 0px; margin: 0px; width: 5cm; } #edmiston-espec h1 { font-
family: 'Times New Roman','Serif'; color: #DB001E; } #edmiston-espec h2 { font-family: 'Times
New Roman','Serif'; color: #DB001E; } #edmiston-espec h3 { font-family: 'Times New
Roman','Serif'; color: #222; } #edmiston-espec ul { list-style: none; margin: 0; padding: 0 0 0 20px;
} #edmiston-espec li.bullet { list-style: disc; }
```

1. MAIN CHARACTERISTICS

2.

TYPE	◦ Sailing Yacht
RIG	◦ Cruising Ketch
HULL NO.	◦ C.2053
BUILDER	◦ Perini Navi
NAVAL ARCHITECT	◦ Ron Holland
EXTERIOR DESIGN	◦ Ron Holland
INTERIOR DESIGN	◦ Perini Navi
YEAR	◦ 2004
REFIT	2019
IMO	◦ 8736394
CLASSIFICATION	◦ ABS Maltese Cross 100-A1.1 "Y", AMS
CONSTRUCTION	◦ Aluminium Hull & Superstructure, Teak Decks
CREW	◦ 11
FLAG	◦ Cayman Islands
ENGINES	◦ 2 x 1,239Hp Deutz TBD 616 V12
GT	◦ 499
NT	◦ 149
DISPLACEMENT	◦ 573
BALLAST	◦ 95 tons lead type

3. DIMENSIONS

LOA	◦ 56.00m / 183'8"
LWL	◦ 46.60m / 152'7"
BEAM	◦ 11.50m / 37'8"

- DRAFT**
- 9.70m / 31'9" max
 - 4.00m / 13'1" min

4. SPEED & RANGE UNDER POWER

- MAXIMUM SPEED** ○ 15.6 knots @ 2,100 rpm
- CRUISING SPEED** ○ 11 knots @ 1,650 rpm
- RANGE** ○ 3,700nm @ cruising

5. CAPACITIES

- ACCOMMODATION** ○ 12 + 2 x Guests in 6 cabins
- CREW** ○ 11 x Crew in 6 cabins
- FUEL** ○ 59,200 litres / 15,639 US gallons
- FRESH WATER** ○ 17,050 litres / 3,750 US gallons
- BILGE TANK** ○ 1,270 litres / 335 US gallons
- LUBE OIL** ○ 2,180 litres / 450 US gallons
- DIRTY OIL** ○ 1,000 litres / 220 US gallons
- GREY WATER** ○ 2,000 litres / 440 US gallons
- BLACK WATER** ○ 2,000 litres / 440 US gallons

6. ACCOMMODATION

ZENJI has accommodations aft for owners and guests in 6 x cabins all with en suite facilities. Her total compliment of owners and guests can be 12 to 14 depending upon whether the 2 x Pullman bunks in the 2 forward guest cabins are used. ZENJI sleeps up to eleven 11 x crew in 6 cabins with 5 heads.

Starting on the sun deck there are twin steering consoles forward to port and starboard with full sail handling controls, as well as navigational screens that are interchangeable along with communications. On deck lounges are aft and just forward of the mizzen mast. All the way aft is a large cushioned sun lounge area with a very large Jacuzzi just aft of the mizzen mast. The crew can go below directly from the sundeck steering console to the bridge. Owner and guests access the aft deck or main salon via an aft stairway to starboard. From the raised deck aft of the cockpit to port is a hydraulic deck access to the lazarette where water sports equipment is stored. This area also has two single cabins (one is engineer) and a complete head and shower. Main access to the engine room is via a watertight door in the lazarette.

To port is the hull shell door which folds out hydraulically to make a 2 m wide swim platform complete with handrails, a swim ladder and a permanent hot and cold water shower at the entrance. This access is typically the primary access to the yacht when at anchor with the starboard mid-ships hydraulic gangway being the alternative access providing flexibility in that one access is mid-ship to starboard and the other is aft to port.

The aft cockpit features a large oval dining table aft for up to twelve and generous serving space. The seating area forward of this is arranged for casual lounging, entertaining and oriented toward a 103" Wide Screen Panasonic TV. To starboard forward from the salon is a private dining salon with seating for up to ten around an oval table. To port of the salon is

the media lounge. A Sony 42" (1.07m) high definition plasma screen is the focal point of this media room.

A central hall between the media room and dining room leads forward to the bridge with the service pantry to port just aft of the bridge. Crew quarters are forward and below with the galley in the after portion of the crew area to port and the crew dinette to starboard. Owner and guest areas are aft via a water tight door making crew servicing of these areas most efficient thanks to the Perini aft engine room. The refrigeration is one level below the crew quarters, accessed via a stairway between the galley and the crew mess. The laundry is athwartship and forward of the crew cabins.

The 6 x cabins aft in the owner/guest area are diverse in their configurations to provide infinite flexibility. The forward two cabins have twin beds and a Pullman in each. The next two cabins aft have king size beds. The master suite features an offset king size bed to starboard, a seating area and vanity, gigantic walk-in closets and a marble bath with his and hers sinks, tub and shower. All guest heads feature luxurious marbles and trim plus bidets in all with tubs in two and showers in four.

The sixth cabin has upper and lower berths and is located to port forward of the master suite.

Perini has done a fantastic job in space planning and use of space. The service areas make excellent use of space and make sometimes difficult service jobs seem easy. The bulk of the refrigeration, laundry and storage are done one level below the crew living area and this saves valuable space for the crew and makes tough jobs like laundry and ironing very efficient.

The engine room is accessed from deck or via a companionway to port opposite the on deck powder room. There is a major control room for the engineer aft with three side-by-side generators aft of the two main engines in a spacious well ventilated engine room.

7. MECHANICAL EQUIPMENT

ENGINES	<ul style="list-style-type: none"> o 2 x 1,239Hp Deutz TBD 616 V12 4-Stroke o Turbocharged & Aftercooled @ 2,235rpm o (W2 full rebuild 2014)
ENGINE HOURS	<ul style="list-style-type: none"> o 14,000 hours approx. each 10th May 2020
GEARBOX	<ul style="list-style-type: none"> o ZF 4.792:1
PROPELLERS	<ul style="list-style-type: none"> o 2 x Kamewa 3-blade feathering for sailing o 1,500mm/4.92' Diameter
RUDDER ANGLE	<ul style="list-style-type: none"> o B&G
STEERING SYSTEM	<ul style="list-style-type: none"> o Hydraulic via double cylinder Marsili system
CENTREBOARD CONTROL	<ul style="list-style-type: none"> o 100 Ton hydraulic cylinder type SAF 2205 with Ceramic coating & dedicated powerpack
BOWTHRUSTER	<ul style="list-style-type: none"> o American Bowthruster Trac 28'-380 125 Hp with o 2 x 5-blade Propellers @ 700 mm/27.5" diameter o Variable Frequency & Variable Speed

GENERATORS	<ul style="list-style-type: none"> ○ 2 x Northern Lights M6108-AZ 1,500rpm 125 kW ○ 1 x Northern Lights MP668H 1,500rpm 90kW ○ (all replaced 2019)
GENERATOR HOURS	<ul style="list-style-type: none"> ○ Gen 1: 2,451 / Gen 2: 2,010 / Gen 3: 2,212 ○ 15th May 2020
EMERGENCY GENERATOR	<ul style="list-style-type: none"> ○ 1 x Northern Lights M864K 1,500rpm 20kW ○ 456 hours 15th May 2020
ELECTRICITY	<ul style="list-style-type: none"> ○ Onboard A.C. power is 380V 50 Cycles ○ Emergency & Electronics 220V single phase 50 Hz, 24V AC/DC ○ 120V single phase 60 cycle for entertainment, bathrooms & service areas
SHORE POWER	<ul style="list-style-type: none"> ○ 100 kW ASEA converter/isolation transformer ○ 2 x 50m (164') shore power cords
BATTERIES	<ul style="list-style-type: none"> ○ For main engine & generator starting, emergency lighting, Electronics, 24 Volt service circuit
CHARGERS	<ul style="list-style-type: none"> ○ Mastervolt
CONVERTERS	<ul style="list-style-type: none"> ○ Marpower SPCII Hybrid SPC 100kW
EMERGENCY	<ul style="list-style-type: none"> ○ Backup switchboard + 20kW Em. Gen, ○ 380, 220W 24V emergency services
HYDRAULICS	<ul style="list-style-type: none"> ○ Centerboard ○ Shell Door ○ Aft Lazarette Hatch ○ Side Boarding Ladder ○ Main & Mizzen Furling/Reefing (Martin Marine) ○ Passarelle ○ Foredeck Tender & Toy Hatches
AIR CONDITIONING	<ul style="list-style-type: none"> ○ Condaria circulated chilled water & fan Units with redundancy throughout ○ 19 x Fan coils in total with 3-speed & thermostatic ○ Controls ○ Distribution of chilled air in living areas via insulated ducts
WATERMAKER	<ul style="list-style-type: none"> ○ 2 x Idromar Maring: 450 l/h each = total 36,000 litres / 8,450 US Gallons p/day
HOT WATER HEATERS	<ul style="list-style-type: none"> ○ 2 x 400 litres / 105 US Gallons stainless steel electric of 2 x 1kW on ring main with 2 x separate pumps
TOILET SYSTEM	<ul style="list-style-type: none"> ○ 12 x Jet toilets
SEWAGE SYSTEM	<ul style="list-style-type: none"> ○ Hamann
FUEL SEPARATOR	<ul style="list-style-type: none"> ○ Alfa Laval MAB 103B 24 centrifuge separator ○ Racor Fuel Filters with vacuum gauges on all engines & generators

- BILGE WATER TREATMENT**
 - Oilmaster DVZ 500 VC treats bilge & engine compartment Water & discharges contaminants to the sludge tank
- 8. SAILS & RIGGING**
 - SAILS**
 - 2014 North Sails Spectra Weave
 - Mainsail and Mizzen fully battened for Maximum area and sail shape
 - Headsails are Fore-staysail & Genoa
 - Headsail furling via Perini Navi furlers (electric)
 - SAIL CONTROL**
 - Via Perini Navi Captive Winch (Electric) System
 - SAIL MONITORING SYSTEM**
 - Perini Navi
 - SAIL HANDLING**
 - Sail plan's control systems based on 13 electronically controlled electric captive reel winches, custom-designed by Perini Navi
 - MASTS**
 - 5-Spreader aluminium main mast by Perini Navi
 - 4-Spreader aluminium mizzen Mast by Perini Navi
 - MAST HEIGHTS**
 - Main 190' (58m)
 - Mizzen 141' (43m)
 - FURLING / REEFING**
 - In-Boom Furling main sail and mizzen in carbon fiber booms by Martin Marine New Zealand
 - (Note: Furling / Reefing is a Hydraulic function with separate Powerpacks)
 - RUNNING RIGGING**
 - Dyneema
 - STANDING RIGGING**
 - Nitronic
- 9. NAVIGATION EQUIPMENT**
 - MAGNETIC COMPASS**
 - 1 x C Plath Type 2843
 - GYRO COMPASS**
 - 1 x C Plath Navigat X Mk1
 - AUTOMATIC PILOT**
 - 2 x C Plath Navipilot V HSC (Bridge & Flybridge)
 - ECHO SOUNDER**
 - B&G
 - RADAR**
 - 2 x Furuno X band Radars FR-2115/2125
 - DISPLAYS**
 - 5 x Hatteland 20.1" Maritime Multi Displays (Bridge)
 - 3 x VEI DM 17" Displays (Fly Bridge)
 - ANTENNAS**
 - 2 x SeaTel 4006 antennas with DAC 2200 ACUs, 8-watt BUCs & Quad LNBS
 - 1 x Arbitrator
 - AIS**
 - 1 x Furuno AIS FA-150

- GPS** ○ 2 x Simrad MX612 w/MX421 sensors
- NAVIGATION COMPUTERS** ○ 2 x Transas NS4000 ECDIS MFD

- NAVTEX** ○ 1 x NX 700 (B)

- LOG** ○ B&G

- WIND INSTRUMENTS** ○ B&G

- SEARCHLIGHTS** ○ 2 x High powered remote controlled flood lights on mizzen & main mast spreaders control from the bridge helm

- CAMERAS** ○ Axis camera system

- MISCELLANEOUS** ○ Kalenburg Horn
- Windshield wipers 5 x 2 speed & fresh water rinse

10. COMMUNICATION EQUIPMENT

- SATCOM** ○ 1 x Furuno Sat C Type IB-581 with 1 x Distress Alert Unit IC-302
- 1 x Distress/Urgen Receiving Unit IC-303, plus connected printer

- VHF** ○ 1 x T&T Sailor 6222 - Wheelhouse
- 2 x IC M330 - Flybridge
- 1 x Standard Horizon Eclipse - Crew Mess

- BROADBAND** ○ 1 x Fleet Broad Band 500 S/N 80082008 (voice & data)
- 1 x Fleet Broad Bank 250 S/N 09413161

- WIFI** ○ 7 x Modems
- 1 x AVCOM spectrum analyser
- 1 x Riverbed Steelhead cache unit
- 1 x Livewire service selector
- 1 x Yacht Spot WiFi unit

- TELEPHONE SYSTEM** ○ Grandstream PBX UCM 62XX with
- Panasonic KX-TS880 phones
- Intercom throughout yacht

- INTERCOM** ○ Crew call system in crew mess with 6 x stations throughout & on deck

11. DECK EQUIPMENT

- ANCHOR WINDLASSES** ○ 2 x Vertical Stainless Steel Winches with anchor chain Wildcats (electric)
- 2 x Additional Harken line handling winches aft

- AFT WARPING CAPSTANS** ○ 2 x Harken 1140

- ANCHORS** ○ 2 x Pool type stainless steel anchors, class approved weight
- 1 x 75kg Alloy Spare Fortress Anchor in the aft peak

- ANCHOR CHAINS**
 - 192m of 24mm chain to port, 220m to starboard
- PASSERELLE**
 - Stern boarding hydraulically telescoping, aft-peak
- SIDE BOARDING LADDERS**
 - 1 x Hydraulically storing mid-ships to starboard under the side deck for side-to-side or at-anchor boarding (Self-levelling steps & a shower at the base)
 - 1 x Marquipt port side folding side-to boarding ladder
- JACUZZI**
 - On flybridge
- SWIMMING PLATFORM**
 - Swimming platform (hull shell door) on port side aft with access to the aft-peak, when deployed has shower, tender fueling (diesel) hose & pump, hand rails & swim ladder
- AWNINGS**
 - Flybridge sun awning
- UNDERWATER LIGHTS**
 - Underwater hull lights 4 x at shell door area

12. ENTERTAINMENT EQUIPMENT

ZENJI possesses the most comprehensive entertainment package of no compromise equipment available, from high-definition plasma screens to B&W speakers, Crestron controls and names like Sony, Sharp and NEC. From the crew quarters entertainment to the finest all weather speakers on the flybridge, every component of ZENJI's entertainment package was chosen with reliability and function as the primary concern. Full Blue-Ray Kaleidescope system.

13. GALLEY & LAUNDRY EQUIPMENT

- GALLEY
 - Commercial grade stove top with 6 x burners
 - Under mounted convection oven
 - Steam oven
 - Variable speed exhaust hood
 - Double sink
- REFRIGERATION
 - Refrigeration in bilge deck forward under crew quarters
 - Area divided into 2 x compartments with separate access
- SERVICE PANTRY
 - Miele refrigerator (under counter)
 - Sink
 - Miele microwave oven
 - Miele dishwasher
 - Hoshizaki ice maker
 - 1 x Garbage disposal
- LAUNDRY
 - 2 x Miele industrial grade 5 kg/11 lb. stainless steel washers
 - 2 x Miele industrial grade 6 kg/13 lb stainless steel dryers
 - 1 x Miele folding/ironing machine

- CREW AREA

- Sink with garbage disposal
- Under counter refrigerator
- Nespresso coffee machine
- Closed circuit TV monitor
- TV & audio equipment

14. SECURITY & SAFETY EQUIPMENT

SAFETY

- Complies with ABS & MCA
- 2 x Nor. Airborne Satfind 406 Mhz GPIRB
- 2 x Nor. Airborne 9 Ghz Portable GMDSS SART

FIREFIGHTING

- Fixed system & appropriate fire extinguishers throughout
- Fixed system with CO2 for engine & machinery spaces plus on deck hydrant system & interior sprinkler system

SECURIY

- Boening monitoring system

15. TENDERS & WATERSPORTS EQUIPMENT

TENDERS

- 1 x 21' /6.40m Custom Castoldi Jet with 1 x 230Hp Steyr diesel engine, navigation & communication equipment, stored forward in tender bays
- covered by a teak deck
- 1 x Novarania 12' Crew tender, rigid bottom with 25Hp Mercury engine
- Tender diesel fueling stations, hull door aft & foredeck

WATER SPORTS

- 2 x Seabobs
- 2 x Kayaks
- 2 x Surf skis
- 2 x Paddle boards

16. REFIT & MAINTENANCE NOTES

WORKS 2019

- Full ABS 15 year survey completed
- Repowered (generators & shore power transformer)
- Main engines top end OH
- CCTV

WORKS 2019 NON ABS

- AV – Crestron, associated hardware & cables
- Air conditioning & fresh air makeups
- Masts and rigging
- Complete paint works; masts, hull, superstructure

17. COMMENTS

The 56m Perini Navi is the most successful mega sailing yacht design of all time with 10 hulls delivered over 7 years. Fabio Perini set the bar high when he married the attributes of a large volume motorsailor with the naval architecture of Ron Holland to produce a comfortable and fast sailing yacht that can be easily managed under sail by one person. Perini created a floating masterpiece unrivalled in beauty, and whose form and functionality remains to this day as desirable as when she was launched.

Zenji offers 6 guest staterooms, sleeping 14 guests plus 6 crew cabins for up to 11 crew. The social areas aboard Zenji are uniquely functional at rest or under sail. The flybridge is the focal point for all once the vessel is underway, from which guests can enjoy a brisk sail in complete comfort and safety with unobstructed 360 degree views. The flybridge also offers sunbathing, a jacuzzi, guest seating and full navigation stations with dual helms. After sailing, guests may retire to the aft cockpit for cocktails and relaxation. This slightly recessed space provides just enough detachment from the outside world to provide intimacy while dining whilst still allowing guests to take in the surrounding beauty of any port or anchorage.

Another feature that Zenji offers, which owners and guests will quickly learn to appreciate, is the fold down side shell boarding platform which provides easy boarding access to the tenders from a protected and secure area port side aft. The platform also serves a modest beach club for water sports and swimming.

Zenji has been maintained to the highest standards her entire life and has just completed her 15 year ABS special survey in 2019 including full paint, masts, superstructure, hull, and bottom. Her rigging has been completely and thoroughly upgraded and inspected. Mechanical systems were serviced, engines overhauled, generators replaced. Zenji is standing tall, ready to travel anywhere in the world with her new owners in complete comfort and safety.

18. EXCLUSIONS

A full list of exclusions is available on request.

Исключения

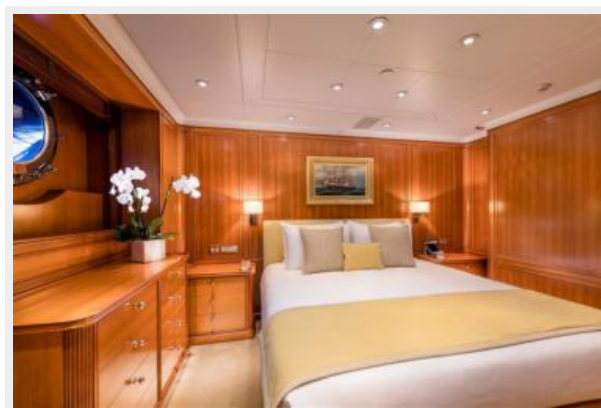
При продаже яхты исключаются личные вещи владельца.

Отказ от ответственности

Компания предоставляет описание судна или яхты добросовестно, но не может гарантировать точность этой информации, а также не ручается за техническое состояние. Покупатель должен проинструктировать своих агентов или оценщиков исследовать представленную информацию более подробно, по собственному желанию. Продажа судна или яхты, изменение цены или снятие с продажи будет происходить без предварительного уведомления.

ФОТОГРАФИИ



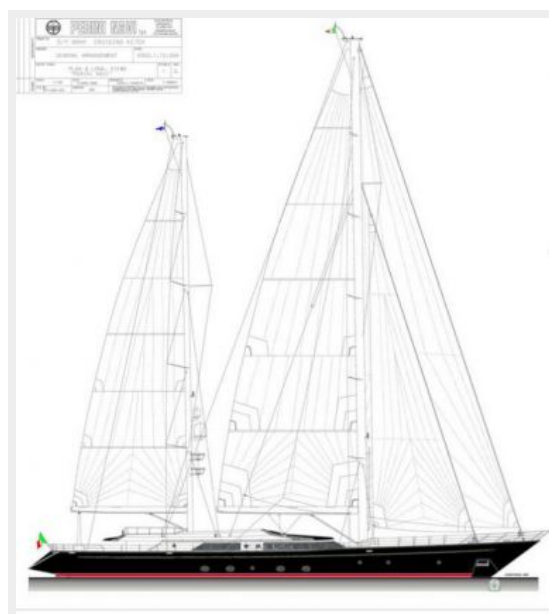




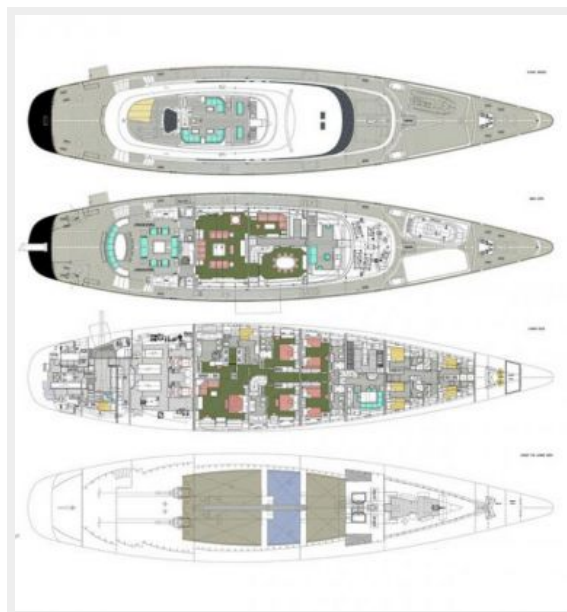




zenji sail plan



zenji ga med



КОНТАКТЫ

Андрей Шестаков (Andrey Shestakov) – ведущий яхтенный брокер отдела продаж яхт и судов компании Shestakov Yacht Sales Inc. Официальный представитель Shestakov Yacht Sales Inc. для русскоговорящих клиентов в центральном офисе компании в Майами/Форт Лодердейл/Флорида/США.

Контактная информация

Email: andrey@shestakovyachtsales.com

Web: shestakovyachtsales.com

Телефоны

Краснодарский край: **+7(918)465-66-44**

США, Майами, Флорида: **+1(954)274-4435**

Время работы

Понедельник – Суббота: **9:00 - 21:00**
EDT

Воскресенье: **Закрето**

Адрес



Harbour Towne Marina, 850 NE 3rd St,
STE 213, Dania, FL 33004