

## AVENTURA 100 — INACE



**Builder:** INACE

**Year Built:** 2022

**Model:** SHELBY

**Price:** PRICE ON APPLICATION

**Location:** Brazil

**LOA:** 100' 0" (30.48m)

**Beam:** 23' 5" (7.14m)

**Max Draft:** 7' 10" (2.39m)

**Cruise Speed:** 11 Kts. (13 MPH)

**Max Speed:** 13 Kts. (15 MPH)

Our experienced yacht broker, Andrey Shestakov, will help you choose and buy a yacht that best suits your needs **Aventura 100 — INACE** from our catalogue. Presently, at Shestakov Yacht Sales Inc., we have a wide variety of yachts available on our sale's list. We also work in close contact with all the big yacht manufacturers from all over the world.

If you would like to buy a yacht **Aventura 100 — INACE** or would like help answering any questions concerning purchasing, selling or chartering a yacht, please call **+1(954)274-4435**

# TABLE OF CONTENTS

TABLE OF CONTENTS	2
SPECIFICATIONS	4
Overview	4
Basic Information	4
Dimensions	4
Speed, Capacities and Weight	5
Accommodations	5
Hull and Deck Information	5
Engine Information	5
DETAILED INFORMATION	6
Boat Highlights	6
Exclusions	6
Disclaimer	6
PHOTOS	7
A 100 -Image 05-HR	7
A 100 -Image 02-HR	7
A 100 -Image 04-HR	7
Aventura 100_render6	7
Aventura 100_render7	7
Aventura 100_render8	7
A 100 -Image 06-HR	8
Aventura 100_render9	8
A 100 -Image 07-HR	8
A 100 -Image 08-HR	8
Aventura 100_GA_01	8
Aventura 100_GA_02	8
CONTACTS	9
Contact details	9

Telephones	9
Office hours	9
Address	9

# SPECIFICATIONS

## Overview

One of the largest shipyards in South America, **INACE** has an impressive history of 52 years and more than 660 ships built to clients in the defense, work and yachting industries.

The **INACE Aventura 100** is part of INACE's new generation of long-range yachts that combines the shipyard's proven seaworthiness and reliability with modern design and features.

Full displacement, steel/aluminum tri-deck conceived by Fernando de Almeida Design, she boast an expansive internal arrangement on her 4850 sq ft (450m2) of living area, including: full beam master stateroom on main deck along with galley, living and dining rooms; 4 guests staterooms on the lower deck; bridge and sky-lounge on the upper deck. The large stern can accommodate any arrangement form a fishing cockpit to an enhanced beach club.

She can be built in 24 months based on a proven INACE platform.

The **INACE Aventura 100** presents the same level of technical quality and bespoke finishing as the most prestigious Italian shipyards for a fraction of their cost.

## Basic Information

Category: SHELBY	Sub Category: Expedition
Model Year: 2022	Year Built: 2022
Country: Brazil	Vessel Top: Hardtop
Fly Bridge: Yes	

## Dimensions

LOA: 100' 0" (30.48m)	LWL: 89' 0" (27.13m)
Beam: 23' 5" (7.14m)	Max Draft: 7' 10" (2.39m)

---

## Speed, Capacities and Weight

---

**Cruise Speed:** 11 Kts. (13 MPH)

**Cruise Speed Range:** 3000

**Max Speed:** 13 Kts. (15 MPH)

**Displacement:** 485016.9764 Pounds

**Gross Tonnage:** 250 Pounds

**Water Capacity:** 4000 Gallons

**Holding Tank:** 100 Gallons

**Fuel Capacity:** 9250 Gallons

**Fuel Consumption:** 45 Gallons

---

## Accommodations

---

**Total Cabins:** 5

---

## Hull and Deck Information

---

**Hull Material:** Steel

**Deck Material:** Teak over Aluminum

**Hull Configuration:** Full Displacement

**Hull Color:** Grey

**Hull Finish:** Steel

**Hull Designer:** INACE Engineering

**Exterior Designer:** Fernando de Almeida

---

## Engine Information

---

**Engines:** 2

**Manufacturer:** MAN

**Engine Type:** Inboard

**Fuel Type:** Diesel

---

# DETAILED INFORMATION

---

## Boat Highlights

---

**INACE** - one of the largest shipyards in South America - has an impressive history of 52 years and more than 660 ships built to clients in the defense, work and yachting industries worldwide.

The **INACE Aventura 100** is part of INACE's new generation of long-range yachts that combines the shipyard's proven seaworthiness and reliability with modern design and features.

Full displacement, steel/aluminum tri-deck conceived by Fernando de Almeida Design, she boast an expansive internal arrangement on her 4850 sq ft (450m2) of living area, including: full beam master stateroom on main deck along with galley, living and dining rooms; 4 guests staterooms on the lower deck; bridge and sky-lounge on the upper deck. The large stern can accommodate any arrangement form a fishing cockpit to an enhanced beach club.

She can be built in 24 months based on a proven INACE platform.

The **INACE Aventura 100** presents the same level of technical quality and bespoke finishing as the most prestigious Italian shipyards for a fraction of their cost.

## Exclusions

---

Owner's personal belongings.

## Disclaimer

---

The Company offers the details of this vessel or yacht in good faith but cannot guarantee or warrant the accuracy of this information nor warrant the condition of the vessel. A buyer should instruct his representatives, agents, or his surveyors, to investigate such details as the buyer desires validated. This vessel or yacht is offered subject to prior sale, price change, or withdrawal without notice.

# PHOTOS

A 100 -Image 05-HR



A 100 -Image 02-HR



A 100 -Image 04-HR



Aventura 100\_render6



Aventura 100\_render7



Aventura 100\_render8



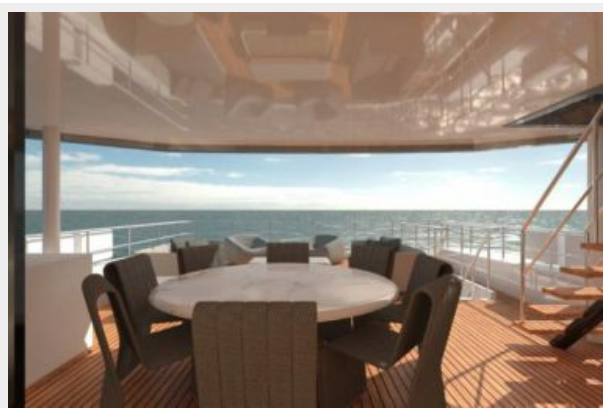
Aventura 100\_render9



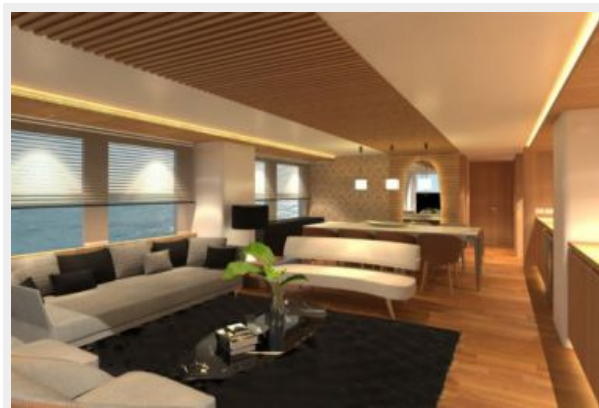
A 100 -Image 06-HR



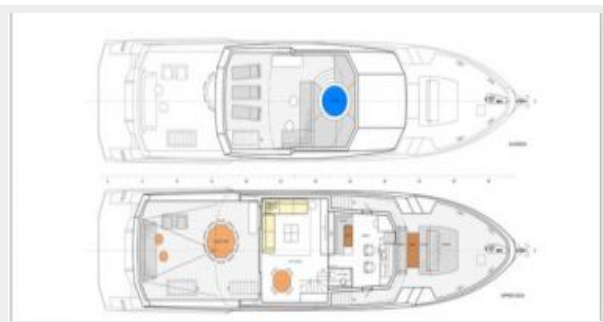
A 100 -Image 07-HR



A 100 -Image 08-HR



Aventura 100\_GA\_01



Aventura 100\_GA\_02





# CONTACTS

---

Andrey Shestakov, leading yacht broker of the sales department of Shestakov Yacht Sales Inc. Shestakov Yacht Sales Inc., the official representative of the Miami/Fort Lauderdale FL headquarters.

## Contact details

---

Email: **andrey@shestakovyachtsales.com**

Web: [shestakovyachtsales.com/en/](http://shestakovyachtsales.com/en/)

## Telephones

---

USA: **+1(954)274-4435**

## Office hours

---

Monday – Saturday: **9:00 - 21:00 EDT**

Sunday: **closed**

## Address

---



Harbour Towne Marina, 850 NE 3rd St,  
STE 213, Dania, FL 33004