

40' TIARA EXPRESS — TIARA



Builder: TIARA

Year Built: 2001

Model: Cruising Yacht

Price: PRICE ON APPLICATION

Location: United States

LOA: 40' 0" (12.19m)

Beam: 14' 5" (4.39m)

Max Draft: 3' 0" (0.91m)

Our experienced yacht broker, Andrey Shestakov, will help you choose and buy a yacht that best suits your needs 40' Tiara Express — TIARA from our catalogue. Presently, at Shestakov Yacht Sales Inc., we have a wide variety of yachts available on our sale's list. We also work in close contact with all the big yacht manufacturers from all over the world.

If you would like to buy a yacht 40' Tiara Express — TIARA or would like help answering any questions concerning purchasing, selling or chartering a yacht, please call +1(954)274-4435

TABLE OF CONTENTS

TABLE OF CONTENTS	2
SPECIFICATIONS	5
Overview	5
Basic Information	5
Dimensions	6
Accommodations	6
Hull and Deck Information	6
Engine Information	6
DETAILED INFORMATION	7
40' Tiara 4000 Express Cummins Engines	7
Exclusions	12
Disclaimer	12
PHOTOS	13
40 Tiara Dinette 2	13
40 Tiara Dinette 3	13
40 Tiara Dinette Looking Aft	13
40 Tiara Dinette	13
40 Tiara Galley 2	13
40 Tiara Galley 3	13
40 Tiara Galley	14
40 Tiara Salon	14
Master Stateroom 2	14
Master Stateroom Looking Aft 2	14
Master Stateroom Looking Aft	14
Master Stateroom	14
40 Tiara Master Head 2	15
40 Tiara Master Head 4	15
40 Tiara Master Head 5	15

40 Tiara Master Head	15
40 Tiara Aft Stateroom 2	15
40 Tiara Aft Stateroom	15
40 Tiara Breaker Panel	16
40 Tiara Salon	16
40 Tiara Exterior 2	16
40 Tiara Exterior 3	16
40 Tiara Exterior 4	16
40 Tiara Exterior 5	16
40 Tiara Exterior 6	17
40 Tiara Exterior	17
6332278_20170830175121882_1_XLARGE	17
6332278_20170830175141089_1_XLARGE	17
40 Tiara Exterior 7	17
helm	17
6332278_20170830181124427_1_XLARGE	18
6332278_20170830181157844_1_XLARGE	18
6332278_20170830181219606_1_XLARGE	18
6332278_20170830181346575_1_XLARGE	18
6332278_20170830181443650_1_XLARGE	19
6332278_20170830181502958_1_XLARGE	19
6332278_20170830181523415_1_XLARGE	19
6332278_20170830181543353_1_XLARGE	19
6332278_20170830181628863_1_XLARGE	20
6332278_20170830181649478_1_XLARGE	20
6332278_20170830181837302_1_XLARGE	20
40 Tiara Port Side	20
40 Tiara Starboard Side	21
40 Tiara Bow 2	21

40 Tiara Bow 3	21
40 Tiara Bow 4	21
40 Tiara Bow	21
1	21
2	22
3	22
4	22
5	22
CONTACTS	23
Contact details	23
Telephones	23
Office hours	23
Address	23

SPECIFICATIONS

Overview

INCREDIBLE VALUE FOR AN OUTSTANDING VESSEL!

New black bimini top installed! 2/20 Fresh black bottom paint, the black boot stripe polished, the hull acid washed. 4/20

2001 Tiara 4000 Express, lightly used, professionally maintained, in exceptional condition and turnkey !

This vessel is owned by a licensed captain/caring owner that has been boating for more than 50+ years. The elderly owner is no longer able to use boat as frequently as he'd like to, he will consider accepting a reasonable offer on this meticulously maintained vessel.

Pride of ownership is apparent everywhere when you step aboard this beautiful Cummins Turbo-Charged Engines (Factory Upgraded Power Option) Tiara Express, You simply won't find a cleaner 4000 Express on the market today. "Silver Lining" is kept professionally maintained in Boca Raton, FL and is easy to show.

Also included but not limited to, monthly diving and zinc replacements (when needed), and regular bi-weekly professional washings. Key notes, items replaced between 2016 and 2017: Forward A/C unit (7000btu) and the Main Salon unit (16,000btu), A/C Sea Water Pump, Refrigerator, Cockpit Icemaker, Flat Screen TV in Salon, House and Engine Battery Banks, VHF Radio, Raytheon Depth Sounder, Raytheon GPS, Raytheon Plotter Chart Chip, and the remote spotlight.

As part of regular professional monthly systems checkup, all hoses and clamps, pumps, fuel and hydraulic lines, fuel and engine filters, fittings, impellers, fuses, etc., are replaced whenever needed. This regular monthly professional maintenance program also includes the boat being professionally washed every other week and a diver bottom cleaning and replacing zincs monthly.

This boat is a must see!

Basic Information

Category: Cruising Yacht

Sub Category: Express

Model Year: 2001

Year Built: 2001

Country: United States

Dimensions

LOA: 40' 0" (12.19m)

Beam: 14' 5" (4.39m)

Max Draft: 3' 0" (0.91m)

Accommodations

Total Cabins: 2

Total Berths: 3

Sleeps: 6

Total Heads: 2

Hull and Deck Information

Hull Material: Fiberglass

Engine Information

Engines: 2

Manufacturer: Cummins

Model: Diamond Series

Engine Type: Inboard

Fuel Type: Diesel

DETAILED INFORMATION

40' Tiara 4000 Express Cummins Engines

INCREDIBLE VALUE FOR AN OUTSTANDING VESSEL!

New black bimini top installed! 2/20 Fresh black bottom paint, the black boot stripe polished, the hull acid washed, 4/20 New a/c pump 6/20, New Windshield Washer motors 6/20. Compounded and Waxed 8/20

1000 Hour service just completed 8/20 along with full Generator service.

2001 Tiara 4000 Express, lightly used, professionally maintained, in exceptional condition and turnkey !

Key notes, items replaced in the last few years: Batteries replaced in the last 6 months. Forward A/C unit (7000btu) and the Main Salon unit (16,000btu), A/C Sea Water Pump, Refrigerator, Cockpit Icemaker, Flat Screen TV in Salon, House and Engine Battery Banks, VHF Radio, Raytheon Depth Sounder, Raytheon GPS, Raytheon Plotter Chart Chip, and the remote spotlight. Fire system just recertified.

Generator and engines serviced regularly, port and starboard Racors changed along with Impellers. Bottom cleaned monthly and zinc replaced regularly.

As part of regular professional monthly systems checkup, all hoses and clamps, pumps, fuel and hydraulic lines, fuel and engine filters, fittings, impellers, fuses, etc., are replaced whenever needed. This regular monthly professional maintenance program also includes the boat being professionally washed every other week and a diver bottom cleaning and replacing zincs monthly.

Dimensions:

LOA: 40'

Beam: 14'6"

Displacement: 26500

Draft: 4'

Bridge Clearance: 12'

Engines:

Engine(s): Turbo- Charged Cummins

Engine(s) HP: 450

Engine Model: Diamond Series

Cruising Speed: 21 knots

Max Speed: 26 knots

Tankage:

FUEL TANKS: 3 diesel approximately - 443 gallons total

LOCATION[s]: 176 Gallons port and starboard in the engine room; 91 gallons centerline under the main cabin sole MATERIAL[s]: aluminum

WATER TANKS: 2 approximately - 150 gallons total

LOCATION[s]: 78 gallons centerline, remainder forward under main cabin sole

MATERIAL[s]: aluminum

HOLDING TANK: 1 approximately 57 gallons total LOCATION: under aft stateroom sole

MATERIAL: aluminum

Accommodations:

- Air conditioning through out
- Forward Master Stateroom with Island Queen berth
- Enclosed spacious master head with separate shower
- Huge galley and dinning lounge
- Spacious Cockpit
- Head and sink located in guest stateroom

- 7' of cabin headroom
- Helm A/C

Galley:

REFRIGERATION: Two Compact refrigerators (under counter)

Raritan STOVETOP: Origo 3-burner

MICROWAVE OVEN: Sharp

WATER HEATER: 20-gallons electric

Black & Decker Spacemaker coffeemaker

- Spacious counter tops
- Sink with hot and cold water
- Sink with hot and cold pressurized water
- Spacious dining table with 11' lounge
- Generous above and below counter storage
- Stereo/radio/CD entertainment
- TV (new)

Electronics:

VHF: West Marine

GPS: Raymarine

DEPTHSOUNDER: Raymarine

Radar: Raymarine Pathfinder

Autopilot: Raymarine

- Ritchie Compass

- Windlass Anchor Control (both at helm and forward deck, switches are new)
- Sony Cockpit stereo (new Speakers)
- Power Center Window
- Power Spotlight (New 7/17)
- Trim Tabs
- POWER SEAT
- Helm AIR

Electrical

GENERATOR: 9Kw Onan (320 hours) LOCATION: forward in the engine room MODEL #: MDKBL5742930

VOLTAGE: 120/240 NO. OF CYLINDERS: 3 RPM: 3600

BATTERY CHARGER[S]: Magnum Inverter and Charles 12-volt 20-amp

Engine Room Batteries (New in 2016) : Eight 12-volt, Five 12-volt 4D port in the engine room

Three 12-volt 4D starboard in the engine room

- 12 volts
- Dual Battery Charging System
- 12V Interior and cockpit lighting
- Three Automatic bilge pumps
- Electrical management panel in cabin

Deck:

GROUND TACKLE: approximately 35-lb Delta Plow anchor with approximately 200' of chain rode combo

WINDLASS: Maxwell 800 electric

Molded fiberglass swim platform

Port and starboard Transom locker

Centerline Locker starboard with 50-amp 220-volt shore power connection and in/out switch for shore power cord (Glendenning cable master).

Two shore power fuses 30-amp 120-volt shore connection Shore and cable television connection.

Locker port transom with handheld shower

CLEATS: stainless steel

- Stainless bow railing
- Bow pulpit windlass anchor with deck and helm controls
- Generous helm, passenger cockpit seating under hardtop
- Garage with hydraulically operated door (new Hydraulics)
- Wet bar with new ice maker
- Integral swim platform
- Twin transom doors
- Grab rails
- Chain locker
- Non skid deck surfaces
- Two seating areas aft
- Piston (New) operated engine room hatch
- Easy swim platform access
- Shower with hot and cold water

FORWARD COCKPIT AND HELM STATION:

Nonskid fiberglass deck

Stereo speaker, port and starboard

Four recessed glass holders

Port of centerline forward Plexiglas chart table top

Centerline forward Adjustable power seat helm seat, starboard, with storage and helm footrest Storage locker, port of helm station Ritchie compass, VDO rudder angle indicator, Indicator lights and switches (new) to three bilge pumps and generator.

Exclusions

Owner's personal belongings.

Disclaimer

The Company offers the details of this vessel or yacht in good faith but cannot guarantee or warrant the accuracy of this information nor warrant the condition of the vessel. A buyer should instruct his representatives, agents, or his surveyors, to investigate such details as the buyer desires validated. This vessel or yacht is offered subject to prior sale, price change, or withdrawal without notice.

PHOTOS

40 Tiara Dinette 2



40 Tiara Dinette 3



40 Tiara Dinette Looking Aft



40 Tiara Dinette



40 Tiara Galley 2



40 Tiara Galley 3



40 Tiara Galley



40 Tiara Salon



Master Stateroom 2



Master Stateroom Looking Aft 2



Master Stateroom Looking Aft



Master Stateroom



40 Tiara Master Head 2



40 Tiara Master Head 4



40 Tiara Master Head 5



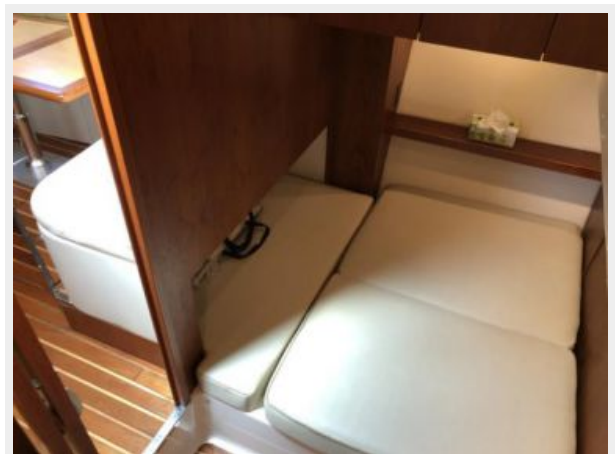
40 Tiara Master Head



40 Tiara Aft Stateroom 2



40 Tiara Aft Stateroom



40 Tiara Breaker Panel



40 Tiara Salon



40 Tiara Exterior 2



40 Tiara Exterior 3



40 Tiara Exterior 4



40 Tiara Exterior 5



40 Tiara Exterior 6



40 Tiara Exterior



6332278_20170830175121882_1_XLARGE



6332278_20170830175141089_1_XLARGE



helm



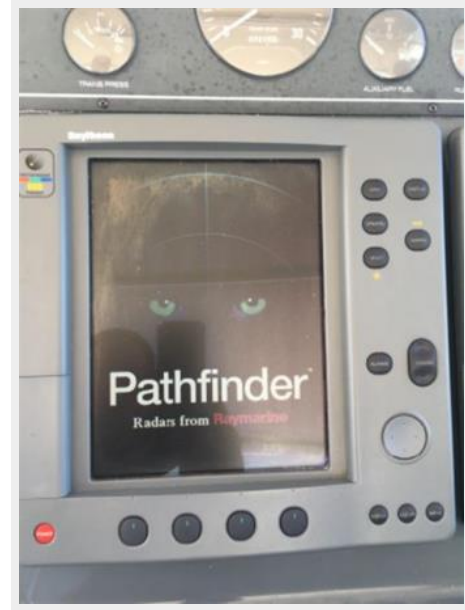
40 Tiara Exterior 7



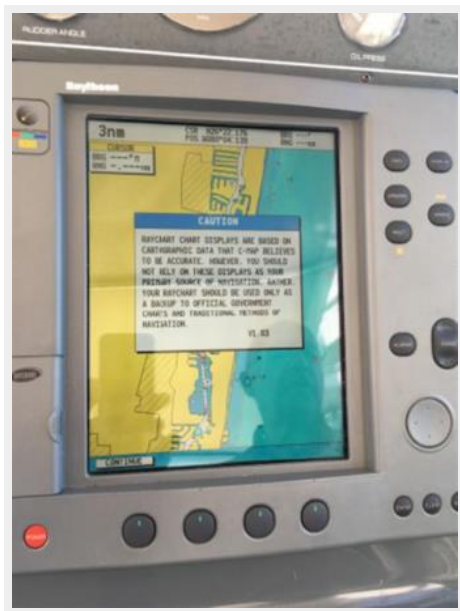
6332278_20170830181124427_1_XLARGE



6332278_20170830181157844_1_XLARGE



6332278_20170830181219606_1_XLARGE



6332278_20170830181346575_1_XLARGE



6332278_20170830181443650_1_XLARGE



6332278_20170830181502958_1_XLARGE



6332278_20170830181523415_1_XLARGE



6332278_20170830181543353_1_XLARGE



6332278_20170830181628863_1_XLARGE



6332278_20170830181649478_1_XLARGE



6332278_20170830181837302_1_XLARGE



40 Tiara Port Side



40 Tiara Starboard Side



40 Tiara Bow 2



40 Tiara Bow 3



40 Tiara Bow 4



40 Tiara Bow



1



2



3



4



5



CONTACTS

Andrey Shestakov, leading yacht broker of the sales department of Shestakov Yacht Sales Inc. Shestakov Yacht Sales Inc., the official representative of the Miami/Fort Lauderdale FL headquarters.

Contact details

Email: andrey@shestakovyachtsales.com

Web: shestakovyachtsales.com/en/

Telephones

USA: +1(954)274-4435

Office hours

Monday – Saturday: **9:00 - 21:00** EDT

Sunday: **closed**

Address



Harbour Towne Marina, 850 NE 3rd St,
STE 213, Dania, FL 33004