

## WING MAN — HATTERAS



**Судостроитель:** HATTERAS

**Год постройки:** 2015

**Модель:** Моторная яхта

**Цена:** **ЦЕНА ЯХТЫ ПО ЗАПРОСУ**

**Местонахождение:** United States

**Длина общая:** 70' 6" (21.49m)

**Ширина:** 21' 4" (6.50m)

**Макс. осадка:** 5' 0" (1.52m)

**Крейс. скорость:** 31 Kts. (36 MPH)

**Макс. скорость:** 41 Kts. (47 MPH)

Купить **WING MAN — HATTERAS** а также выбрать подходящую вам яхту из нашего каталога яхт вам поможет опытный яхтенный брокер Андрей Шестаков. На сегодняшний день компания **Shestakov Yacht Sales Inc.** имеет большое количество яхт в собственном списке продаж, а также тесно сотрудничает со всеми крупными яхтенными производителями по всему миру.

Для того чтобы купить яхту **WING MAN — HATTERAS** а также проконсультироваться по любому вопросу связанному с покупкой, продажей, чартером яхт позвоните по телефону **+7(918)465-66-44**.

# ОГЛАВЛЕНИЕ

ОГЛАВЛЕНИЕ	2
ХАРАКТЕРИСТИКИ	5
Обзор	5
Основная информация	5
Размеры	5
Скорость, вместимость и масса	5
Размещение	6
Корпус и палуба	6
Информация о двигателе	6
ПОДРОБНОЕ ОПИСАНИЕ	7
Overview	7
Walkthrough	7
Cockpit	8
Salon	8
Galley	8
Master Stateroom	8
Master Head	9
Companionway	9
Bow Stateroom	9
Port Aft Stateroom	9
Port and Bow Heads	9
Crew Quarters	10
Crew Head	10
Engine Room	10
Electrical Equipment	10
Flybridge	11
Hardware and Miscellaneous	11
Исключения	12

Отказ от ответственности	12
ФОТОГРАФИИ	13
Starboard Profile	13
Starboard Bow Profile	13
Main Salon	13
Main Salon	13
Salon Entertainment Area	13
Salon Entertainment Area (Pop Up TV)	13
Main Salon	14
Galley Bar	14
Galley	14
Dinette	14
Galley	14
Master Stateroom	14
Master Stateroom	15
Master Stateroom	15
Master Bath	15
Guest Stateroom Forward	15
Guest Bath	15
Guest Stateroom Forward	15
Twin Guest Stateroom	16
Guest Bath	16
Bridge Deck	16
Bridge Deck Seating	16
Bridge Deck	16
Bridge	16
Bridge	17
Helm	17
Helm	17

---

View From Mezzanine to Cockpit	17
Upper Helm	17
Upper Helm	17
Cockpit	18
Cockpit Fighting Chair	18
Cockpit	18
Cockpit	18
Engine Room	18
Engine Room	18
Engine Room	19
Engine Room	19
Crew Cabin	19
Starboard Profile	19
Bow	19
Port Bow Profile	19
Bow Profile	20
Bow Stern Profile	20
Stern	20
Port Stern Profile	20
Stateroom Layout	20
<b>КОНТАКТЫ</b>	<b>21</b>
Контактная информация	21
Телефоны	21
Время работы	21
Адрес	21

# ХАРАКТЕРИСТИКИ

## Обзор

Making its debut at the Fort Lauderdale Boat Show October 2014, this 70GT was immediately bought by its current owner, who at the time was fishing a 60GT. WING MAN features five spacious staterooms, four heads and an exceptionally large, open salon and galley. She is powered by twin 2600 HP MTU engines that enable WING MAN to cruise comfortably at 30+kts and reach a top speed of 40+kts. The warranties through December 2022 are fully transferable. Spending its life at Ocean Reef, WING MAN has had the absolute best of care from her full-time crew of two. She offers the ultimate sport fishing platform and is a proven fish raiser.

## Основная информация

<b>Тип судна:</b> Моторная яхта	<b>Модельный год:</b> 2015
<b>Год постройки:</b> 2015	<b>Страна:</b> United States
<b>Открытая палуба мостика:</b> Да	<b>Кубрик:</b> Да

## Размеры

<b>Длина общая:</b> 70' 6" (21.49m)	<b>Ширина:</b> 21' 4" (6.50m)
<b>Макс. осадка:</b> 5' 0" (1.52m)	

## Скорость, вместимость и масса

<b>Крейс. скорость:</b> 31 Kts. (36 MPH)	<b>Макс. скорость:</b> 41 Kts. (47 MPH)
<b>Чистый вес:</b> 102 Pounds	<b>Вместимость воды:</b> 330 Gallons
<b>Вместимость сточного бака:</b> 215 Gallons <b>Объем топливного бака:</b> 2800 Gallons	

## Размещение

---

Всего кают: 5

Спальные места: 10

Каюта капитана: Да

Каюты экипажа: 2

Спальных мест экипажа: 4

## Корпус и палуба

---

Материал корпуса: Fiberglass

## Информация о двигателе

---

Двигатели: 2

Производитель: MTU

Модель: 16V2000

Тип двигателя: Inboard

Тип топлива: Diesel

# ПОДРОБНОЕ ОПИСАНИЕ

## Overview

Making its debut at the Fort Lauderdale Boat Show October 2014, this 70GT was immediately bought by its current owner, who at the time was fishing a 60GT. WING MAN features five spacious staterooms, four heads and an exceptionally large, open salon and galley. She is powered by twin 2600 HP MTU engines that enable WING MAN to cruise comfortably at 30+kts and reach a top speed of 40+kts. The warranties through December 2022 are fully transferable. Spending its life at Ocean Reef, WING MAN has had the absolute best of care from her full-time crew of two. She offers the ultimate sport fishing platform and is a proven fish raiser.

## Walkthrough

Upon stepping on the boat, you are immediately met by the 200 sq ft cockpit featuring teak soles, covering boards and steps. One step up, the mezzanine offers ample seating with air conditioning and full view of the cockpit. A Release Marine fighting chair sits predominantly in the middle. Large fish boxes, ice chests, integrated freezer boxes, insulated bait boxes and a tackle center all combine for a very well laid out cockpit. Up the teak steps to the flybridge, you come upon an exceptionally clean and organized helm. Four 22" flatscreens are flush mounted and display the information sent to them from the system that are housed in the compartments port and starboard of the teak helm pod. Three Release Marine helm chairs offer a commanding view with easy visibility of the bow and both stern corners. The large flybridge affords an abundance of seating areas forward and on either side of the helm, as well as freezers and refrigerated boxes. The flybridge is air conditioned. Entering the interior of WING MAN through the numatic door, you immediately notice the many custom features that make her stand out. The high gloss teak joinery and dark granite stonework are accentuated by the extremely large windows port, starboard and aft. To starboard is an L-shaped couch with storage below as well as a custom Release Marine high-low table with storage. To port is a 42" flatscreen TV on a lift with Bose surround sound. The galley features a large island with a granite top and flanked by two custom Release Marine barstools. Under the island are Jennaire refrigerator and freezer drawers, 8 in total. The galley features all appliances one would expect, including a four-burner stovetop and convection oven. Across from the galley to starboard is a large, raised settee. Moving down the steps forward you first come to the master stateroom to starboard. This large room features a queen berth, large head with shower, hanging locker and several drawers for storage. A 37" flatscreen TV with Bose Surround sound. Across the hall is a bunk room with ample storage provided by hanging locker and drawers. This room features its own entertainment system as well. Moving forward past the day head and closet housing the washer and dryer, you find the VIP stateroom. A walkaround, centerline queen bed offers storage below. This room features a 23" Samsung TV, hanging lockers port and starboard, and large ensuite head with custom marble shower. Aft in this hallway and down 4 steps to port, you come into the crew's quarters. This area features two bunk rooms each with their own TV and entertainment as well as plenty of storage. They share a centerline head with shower and sink. There is engine room access from

this area.

---

## Cockpit

---

• 200 Sq ft • Air Conditioned mezzanine • Eskimo ice machine • Teak cockpit sole • Teak coaming boards • Teak covering boards • Teak mezzanine deck • 12 V electric reel outlets in cockpit • Transom fish box • Garmin 7612 • Fusion stereo with JL Audio speakers • Release Marine Trillion fighting chair with 6 rod rocket launcher and offset pedestal • Freshwater washdown in cockpit • Removable dive ladder in transom gate opening • Automatic sliding door to salon • Hatch to engine room • Removable fish boxes for access to rudders • Transom door with lift up coaming gate • Bait and tackle center with drawers and cutting board • Refrigerated drink box in top step of mezzanine • Cockpit freezer in mezzanine • Insulated starboard mezzanine box • Insulated bait box with rack system • DC LED overhead lights under flybridge overhang • Cockpit scuppers • Cockpit hatches with gutter drains • Stainless-steel rod holders (4) • Two fish boxes with macerator • Molded-in transom livewell • Freshwater wash down outlet • Saltwater wash-down • Stereo speakers with remote keypad for control

---

## Salon

---

• High gloss teak joinery • L-shaped sofa to starboard with storage below • Salon Cocktail Table – (Release Marine) Diamond shape 34”x34” legs up and over mechanism • Custom handrails overhead running the length of the salon and manufactured by Hinckley Yachts • Carpeting with carpet runners • Fabric headliner with wood accents installed on track system • 42” class TV with power lift • Entertainment system • Polished stainless-steel threshold at salon door • Fixed frameless windows with tinted safety glass • DC LED dimmable lighting • Smoke and carbon monoxide detector • HVAC controls

---

## Galley

---

• 6 x Jennaire Refrigerator drawers • 2 x Jennaire freezer drawers • Sharp Carousel Convection oven • Four burner ceramic cook top • Granite countertops • Release Marine bar stools • Dinette seating to starboard with wood table and stainless-steel pedestal • Durable engineered wood flooring • Fabric headliner installed on track system • Wood inserts to match interior finish on appliance fascia • Garbage disposal • AC duplex outlet(s) with ground fault protection • DC LED dimmable lighting

---

## Master Stateroom

---

• Queen Bed with storage below • Cedar lined closet with automatic light • Nightstands • Full-length mirror • Private head access • AC duplex outlets with ground fault protection • DC LED dimmable lighting • DC low-voltage lights under berth • 37” Class LED TV • Entertainment



system • HVAC control • Smoke and carbon monoxide detector

---

## Master Head

---

• Custom granite countertops • Durable engineered wood flooring • Mirrored ceiling • Storage cabinet with mirror above sink • Base cabinet to match interior finish with storage • Cabinet with finished soffit • Shower with door and automatic sump pump • Freshwater toilet • Towel bar, towel ring, tissue holder, robe hook • Recirculating fan • AC duplex outlets with ground fault protection • DC LED lighting • Holding tank 3/4 full indicator light

---

## Companionway

---

• Rod storage in ceiling • Carpeting with carpet runners • Cedar-lined port companionway locker • Whirlpool washer and dryer in port cabinet • Lighted stairway to salon • DC LED lighting • Lighted port and starboard attic space with access to electric panels and water tank gauge • Access hatches to all bilges • Flush panel doors, with stops, to staterooms and heads • Central Vac System

---

## Bow Stateroom

---

• Queen sized tapered berth with upholstered headboard and cedar lined storage underneath • Upholstered berth base • Port and starboard locker storage • Cedar-lined hanging/storage lockers with automatic light • Nightstands • 32" class LED TV • Full-length mirror • Private head access • Screened overhead hatch with privacy cover • AC duplex outlets • DC LED lighting • HVAC control • Smoke and carbon monoxide detector

---

## Port Aft Stateroom

---

• Lower berth with upper pullman berth • HMC mattress, bunk cover, pillows, shams and linens • Cedar lined closet and automatic light • 24" class LED TV • Full-length mirror • AC duplex outlets with ground fault protection • DC LED lighting • HVAC control • Smoke and carbon monoxide detector

---

## Port and Bow Heads

---

• Granite countertops • Durable engineered wood flooring • Hardwood baseboards • Storage cabinet with mirror above sink • Base cabinet to match interior finish with storage • Cabinet with finished soffit • Shower with door and automatic sump pump • Freshwater toilet • Towel bar, towel ring, tissue holder, robe hook • Recirculating fan • AC duplex outlets with ground fault protection • DC LED lighting • Holding tank 3/4 full indicator light

---

## Crew Quarters

---

• Port and starboard rooms• Single beds with pullman over each• Cedar lined closets with automatic light• Nightstands• Full-length mirrors• Shared centerline head• Engine room access• AC duplex outlets with ground fault protection• DC LED lighting• Smoke and carbon monoxide detector

---

## Crew Head

---

• Durable wood flooring• Hardwood baseboards• Solid surface countertop, backsplash, with sink• Base cabinet to match interior finish with storage• Shower with door and automatic sump pump• Freshwater toilet• Towel bar, towel ring, tissue holder, robe hook• Recirculating fan• AC duplex outlets with ground fault protection• DC LED lighting• Holding tank 3/4 full indicator light

---

## Engine Room

---

• MTU 16V-2000 @2600BHP • Engine hours: Port 1475, Starboard 1552 (May 2020)• 2 x Onan 21.5KW generators • Generator hours: Port 1200, Starboard 200 (May 2020)• Watermaker Sea Recovery Aqua whisper• Spot Zero with double pass• Stainless grab rail• Rubber deck mat between engines• Insulation in engine room ceiling, for noise mitigation in salon• AC fluorescent lights• DC LED lights• DC bilge blowers• Fiberglass fuel tank constructed with fire retardant resin and bronze fittings• USCG type A1 U.L. Marine listed fuel lines• Electric fuel priming pumps, engines• U.L. Marine-listed duplex fuel filters/water separators, engines and generators• Fiberglass water tank• Polyethylene water lines• Pressurized freshwater pump• Water manifold with centralized shut-off valve for sinks and showers• 40-gallon water heater• Polyethylene sewage holding tank with 24 volt DC sewage pump, plumbed for dockside pump-out with 3/4 full display and alarm as part of systems monitor programmable logic controller• Sealed shower sumps• 24-volt DC bilge and sump pumps: three (3) at 3700 gph, one (1) at 500 gph, with heavy duty float switches and protective guards• Auxiliary emergency bilge pump, 150 gpm in lazarette• Bronze chrome plated ball valves through bolted in solid fiberglass on all underwater through hull fittings with electrical bonding throughout• Individual pickup sea chests for each engine and gensets, high speed seachest for water makers, air conditioners and raw water pumps• Centralized drain line with single thru-hull• Painted pultruded fiberglass rudder shelf bolted to steel plates in the stringers• 1" Stainless steel steering tie bar with pivoting self-aligning ball joint connection at all cylinder and tie bar connections• Shore water connection with pressure-reducing valve• 220 volt AC air compressor with regulator• Oil change system for engines and generators• FM200 fire extinguishing system for engine compartment with automatic and remote manual controls, audible and visual discharge signals• DC voltmeter in battery panel• Engine start / stop switches with hour meter

---

## Electrical Equipment

---

- 24 volt banks of heavy-duty, 12 volt marine batteries mounted in fire retardant fiberglass boxes
- (2)• Tin coated wiring with insulation, labeled and color coded• Automatic battery charger, 50/60Hz• Automatic battery paralleling system with switch at helm• Battery control panel with fuses and isolation switches• AC and DC distribution panels with magnetic circuit breakers• AC switching panel with source selector switches, volt meter, ammeter, frequency meter, distribution panel selector switches• 240 volt retractable shore cords with over-current protection (1 - 50 amp and 1 - 100 amp)• Shoreline polarization transformers with boost function (2)• Ground fault protection on AC receptacles and AC lighting circuits• USCG International navigation lights

## Flybridge

---

- Pipewelders full tower w/ hydraulic riggers• Clear coat tower and riggers• Flybridge AC blowers 22,000 BTU's• Flybridge freshwater connection• Teak helm pod, high glass finish• Three Release Marine Trillion Series teak helm chairs• Systems monitor with programmable logic controller read-out, visual and audible signals for exhaust temperature, alternator, battery voltage, high bilge water, fire warning in engine compartment, fire extinguisher discharge in engine room, AC power loss, smoke and carbon monoxide detectors, and holding tank 3/4 full monitor• MTU Bluevision Control System• 4 x Garmin 17" monitors• Garmin 12KW Radar with 6' Antenna• Garmin Autopilot• Garmin Sounder• 2 x Icom M506 VHF• FLIR M625L night vision• Furuno RD 33• Hatteras systems display• Boening monitoring system• Teaser reels• Bench seats port/starboard with reversible riding seat backs• Compass with dimmable light• Palm Beach style helm with single lever electric controls with thruster control• Hydraulic power-assisted steering• Freshwater outlet• DC AM/FM stereo receiver with speakers• Fuel gauge• Rod storage under port and starboard benches• Top-loading freezer• Additional storage areas beneath seats and console

## Hardware and Miscellaneous

---

- All flooring in Amtico AR0W7990 Harbour Pine 4.5 X 36" beveled• Hand crafted high gloss teak interior• All interior hardware in chrome• Bow deck anchor locker• Anchor W/ 25' chain, 300' anchor line• Four polished stainless steel spring cleats with chafing strips, through-bolted, robust aluminum backing plates• Two polished stainless steel bow cleats and chocks with chafing strips, through bolts, (2) stern cleats and hawse pipes, through bolted aluminum backing plates• Polished, anodized aluminum bow, flybridge rail and bridge ladder• Deck plates for fuel, water fill and waste pump out• Stainless steel rudders• Fog bell• Dual air horn• Transom zinc• Manganese bronze rudder bearings with dripless seals• Manganese bronze engine couplings• Alloy 22 high strength propeller shafts tapered with round keys for reduced stress concentrations at propeller and coupling ends• Dripless shaft seals• Manganese bronze struts• Nibral high performance propellers• Stainless steel trim tabs• Air conditioning, 64,000 BTU capacity, with reverse cycle heating• Ventilation fans for electronics in attic space

## Исключения

---

При продаже яхты исключаются личные вещи владельца.

## Отказ от ответственности

---

Компания предоставляет описание судна или яхты добросовестно, но не может гарантировать точность этой информации, а также не ручается за техническое состояние. Покупатель должен проинструктировать своих агентов или оценщиков исследовать представленную информацию более подробно, по собственному желанию. Продажа судна или яхты, изменение цены или снятие с продажи будет происходить без предварительного уведомления.

# ФОТОГРАФИИ

**Starboard Profile**



**Starboard Bow Profile**



**Main Salon**



**Main Salon**



**Salon Entertainment Area**



**Salon Entertainment Area (Pop Up TV)**



**Main Salon**



**Galley Bar**



**Galley**



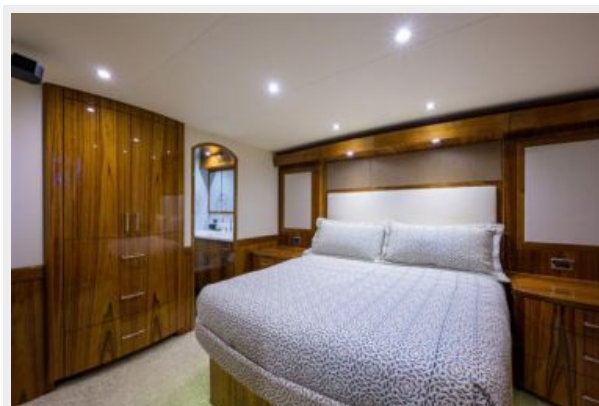
**Dinette**



**Galley**



**Master Stateroom**



**Master Stateroom**



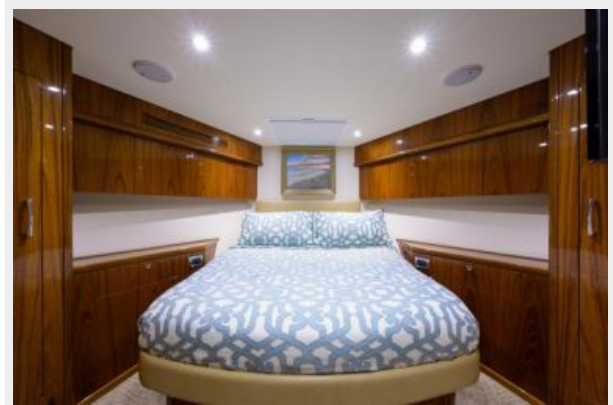
**Master Stateroom**



**Master Bath**



**Guest Stateroom Forward**



**Guest Stateroom Forward**



**Guest Bath**



**Twin Guest Stateroom**



**Guest Bath**



**Bridge Deck**



**Bridge Deck Seating**



**Bridge Deck**



**Bridge**





**Bridge**



**Helm**



**Helm**



**View From Mezzanine to Cockpit**



**Upper Helm**



**Upper Helm**



**Cockpit**



**Cockpit Fighting Chair**



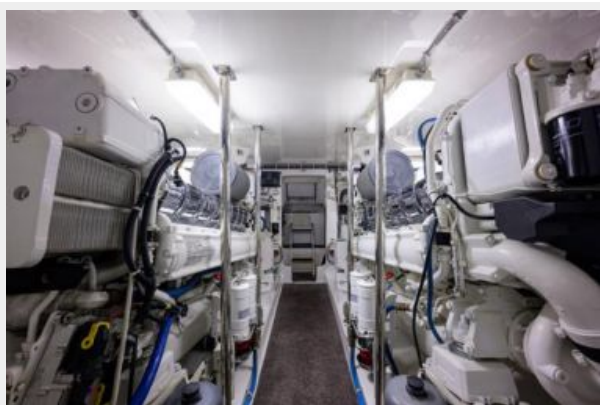
**Cockpit**



**Cockpit**



**Engine Room**



**Engine Room**



**Engine Room**



**Engine Room**



**Crew Cabin**



**Starboard Profile**



**Bow**



**Port Bow Profile**



**Bow Profile**



**Bow Stern Profile**



**Stern**



**Port Stern Profile**



**Stateroom Layout**



# КОНТАКТЫ

---

Андрей Шестаков (Andrey Shestakov) – ведущий яхтенный брокер отдела продаж яхт и судов компании Shestakov Yacht Sales Inc. Официальный представитель Shestakov Yacht Sales Inc. для русскоговорящих клиентов в центральном офисе компании в Майами/Форт Лодердейл/Флорида/США.

## Контактная информация

---

Email: [andrey@shestakovyachtsales.com](mailto:andrey@shestakovyachtsales.com)

Web: [shestakovyachtsales.com](http://shestakovyachtsales.com)

## Телефоны

---

Краснодарский край: **+7(918)465-66-44**

США, Майами, Флорида: **+1(954)274-4435**

## Время работы

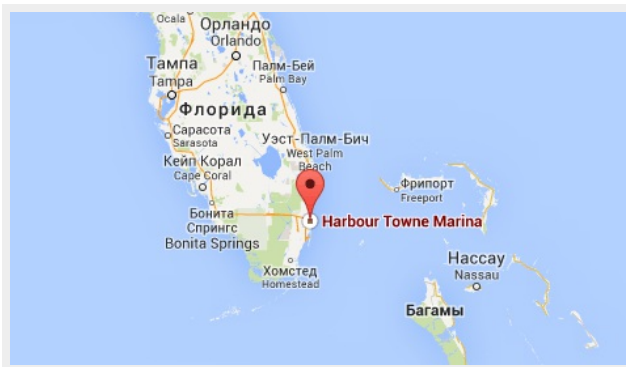
---

Понедельник – Суббота: **9:00 - 21:00**  
EDT

Воскресенье: **Закрито**

## Адрес

---



Harbour Towne Marina, 850 NE 3rd St,  
STE 213, Dania, FL 33004