

PRESTIGE LADY — WESTSHIP WORLD YACHTS



Builder: [Westship World Yachts](#)

Year Built: 2006

Model: Motor Yacht

Price: PRICE ON APPLICATION

Location: United States

LOA: 110' 0" (33.53m)

Beam: 25' 3" (7.70m)

Min Draft: 6' 5" (1.96m)

Cruise Speed: 18 Kts. (21 MPH)

Max Speed: 25 Kts. (29 MPH)

Our experienced yacht broker, Andrey Shestakov, will help you choose and buy a yacht that best suits your needs **PRESTIGE LADY — Westship World Yachts** from our catalogue. Presently, at Shestakov Yacht Sales Inc., we have a wide variety of yachts available on our sale's list. We also work in close contact with all the big yacht manufacturers from all over the world.

If you would like to buy a yacht **PRESTIGE LADY — Westship World Yachts** or would like help answering any questions concerning purchasing, selling or chartering a yacht, please call **+1(954)274-4435**

TABLE OF CONTENTS

TABLE OF CONTENTS	2
SPECIFICATIONS	5
Overview	5
Basic Information	5
Dimensions	5
Speed, Capacities and Weight	5
Accommodations	6
Hull and Deck Information	6
Engine Information	6
DETAILED INFORMATION	7
Details	7
Remarks	7
Exclusions	7
Disclaimer	7
PHOTOS	9
Aft Deck	9
Aft Dining	9
Aft Dining	9
Bow Area	10
Breakfast Area	10
Bunny-pad-and-hot-tub	10
Bunny-pad-sunning-Area	10
Butler-Pantry	10
Cherry-wood-flooring	10
Electric-Sliding-Door	11
Fly-Bridge	11
Fly-Bridge	11
Formal-Dining-Area	11

Formal-Dining-Area	11
Formal-Dining-Area	11
Galley	12
Galley	12
His-Her-Cedar-closet	12
His-Her-onyx-sinks	12
Hot-Tub	12
King-Berth	12
L-Shaped-seating	13
Main-Salon	13
Main-Salon	13
Main-Salon	13
Main-Salon	13
Office-Area	13
Onyx-counter	14
Portside-Ensuite	14
Portside-Queen	14
Powder-Room	14
Raised-Pilot-House	14
Raised-Wheel-House	14
Raised-Wheel-House	15
Settee-seating-for-12	15
Stairwell-to-Main-Salon	15
Starboardside-Ensuite	15
Starboard side-Twins	15
Starboard side-Twins	15
Upper-Helm-Station	16
U-shaped-bar	16
VIP	16

VIP	16
VIP-Queen	16
Walk-around-Queen	16
Walk-in-marble-shower	17
Walk-in-marble-shower	17
Line Drawings	17
CONTACTS	18
Contact details	18
Telephones	18
Office hours	18
Address	18

SPECIFICATIONS

Overview

“PRESTIGE LADY” is a custom-built yacht from Westship World Yachts in Tampa, Florida. Designed by Evan Marshall and launched with a Lloyds ABS classification, this magnificent 110 Raised Pilothouse Yacht displayed a performance and sea kindliness well beyond her projected expectations. Heavier than her comparable production vessels, “PRESTIGE LADY” is arguably “the most comfortable vessel in her Class”.

Basic Information

Category: Motor Yacht

Model Year: 2006

Year Built: 2006

Country: United States

Vessel Top: Open

Fly Bridge: Yes

Dimensions

LOA: 110' 0" (33.53m)

Beam: 25' 3" (7.70m)

Min Draft: 6' 5" (1.96m)

Speed, Capacities and Weight

Cruise Speed: 18 Kts. (21 MPH)

Max Speed: 25 Kts. (29 MPH)

Water Capacity: 900 Gallons

Holding Tank: 240 Gallons

Fuel Capacity: 5600 Gallons

Accommodations

Total Cabins: 6

Sleeps: 12

Total Heads: 7

Crew Cabin: 2

Crew Sleeps: 4

Hull and Deck Information

Hull Material: Fiberglass

Exterior Designer: Evan Marshall

Interior Designer: Evan Marshall and Pam Williams

Engine Information

Engines: 2

Manufacturer: MTU

Model: 16V 2000

Engine Type: Inboard

Fuel Type: Diesel

DETAILED INFORMATION

Details

Naval Architect: Evan Marshall, Murry & Associates
Interior Design: Evan Marshall and Pam Williams
Gensets: (2) Onan 55 kW Platinum Series – 2800 hours
Bow thruster: American Bow Thruster
Stabilizers: Trac Systems
Steering: Jastrom control twin power packs
Watermaker: FCI Max-Q 1,800 gpd
Windlass: (2) Muir 3—ton hydraulic
Davit: MarQuipt 2,000 lb.
Radars: (2) Furuno
Sonar: (2) Furuno
DGPS/Chart Plotter: Furuno NavNet and Nobeltec
Flat screens: (5) – 2 Argonaut flat screens
Autopilot: Simrad AP50
SATCOM: KVHC
CTV: Elbex Cameras
Monitoring System: Simon/Palladium Technowledge

Remarks

PRESTIGE LADY's massive beam (1'3" wider than the Westport 112) allows for easy walk around decks with no sacrifice to her interior space. Beautiful custom décor throughout, the selection of hardwood and fabrics is something that must be seen to be appreciated. The Owner's Suite is full width with a his and hers head festooned with imported stone and premium fixtures and appointments. Spacious and elegant accommodations for guests are forward with three more staterooms and each with ensuite heads. Crew quarters are forward and down from the country kitchen style galley that includes an inviting circular dining table in the forward port corner. Additional formal dining is in the forward part of the salon and under its own circular soffit ceiling and sitting on a circular stone inlay floor. The engineering spaces are huge and well it. The wider beam makes for easy access to all sides of the main engines. A utility room is located at the entrance to the main engine room and is large enough for routine maintenance, repairs, and also offers plenty of storage for parts and deck gear. The flybridge is enormous and wide open. All the usual features of a vessel of this size and style plus u-shaped bar with grill, full Jacuzzi, and comfortable custom seating for twelve people. **PRESTIGE LADY** is a vessel to be seen by those that are ready to make the upward change from production yachts. Her owner has enjoyed her at sea and in port. She is ready to cruise and standing by for your inspection.

Exclusions

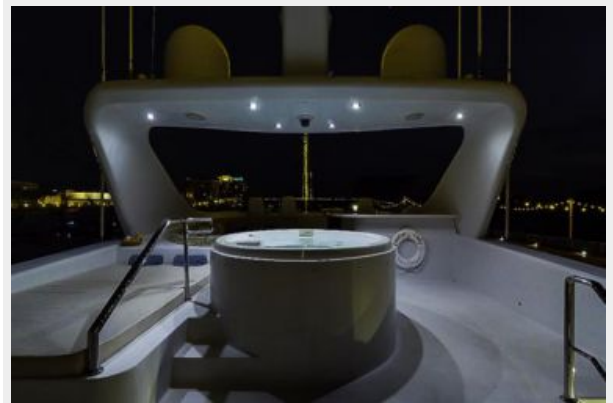
Owner's personal belongings.

Disclaimer

The Company offers the details of this vessel or yacht in good faith but cannot guarantee or warrant the accuracy of this information nor warrant the condition of the vessel. A buyer should instruct his representatives, agents, or his surveyors, to investigate such details as the buyer desires validated. This vessel or yacht is offered subject to prior sale, price change, or withdrawal

without notice.

PHOTOS



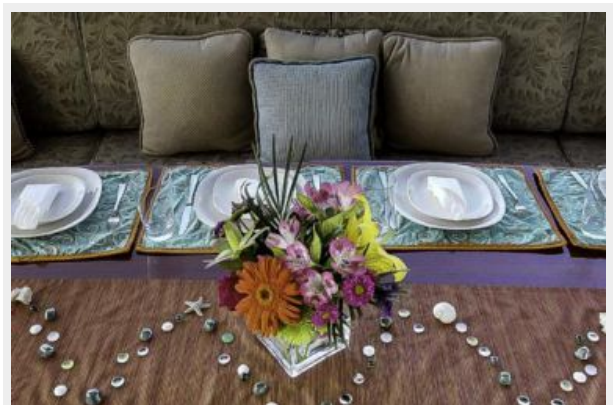
Aft Deck



Aft Dining



Aft Dining



Bow Area



Breakfast Area



Bunny-pad-and-hot-tub



Bunny-pad-sunning-Area



Butler-Pantry



Cherry-wood-flooring



Electric-Sliding-Door



Fly-Bridge



Fly-Bridge



Formal-Dining-Area



Formal-Dining-Area



Formal-Dining-Area



Galley



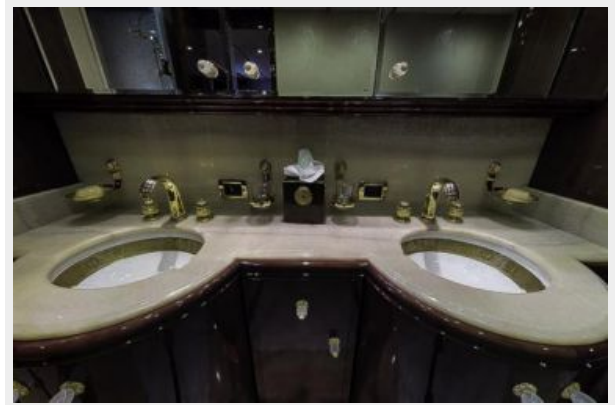
Galley



His-Her-Cedar-closet



His-Her-onyx-sinks



Hot-Tub



King-Berth



L-Shaped-seating



Main-Salon



Main-Salon



Main-Salon



Main-Salon



Office-Area



Onyx-counter



Portside-Ensuite



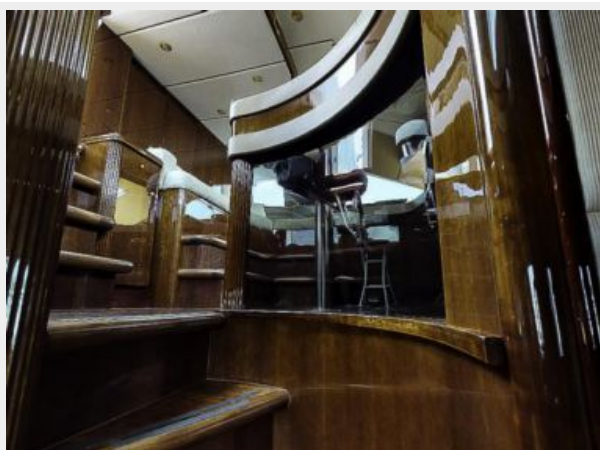
Portside-Queen



Powder-Room



Raised-Pilot-House



Raised-Wheel-House



Raised-Wheel-House



Settee-seating-for-12



Stairwell-to-Main-Salon



Starboardside-Ensuite



Starboard side-Twins



Starboard side-Twins



Upper-Helm-Station



U-shaped-bar



VIP



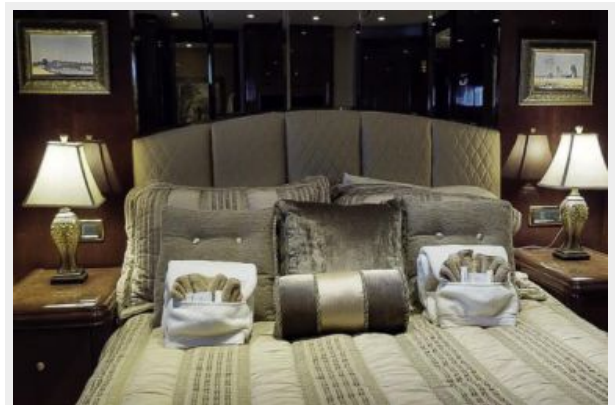
VIP



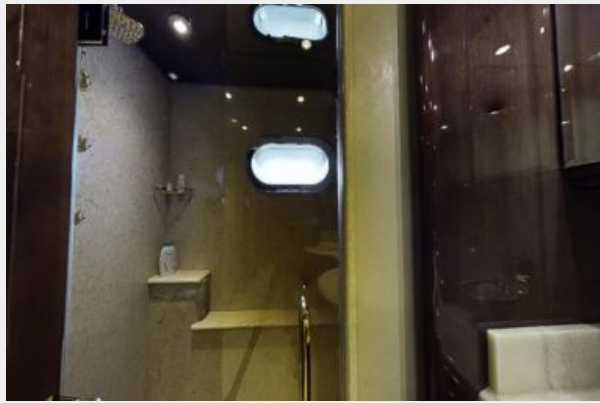
VIP-Queen



Walk-around-Queen



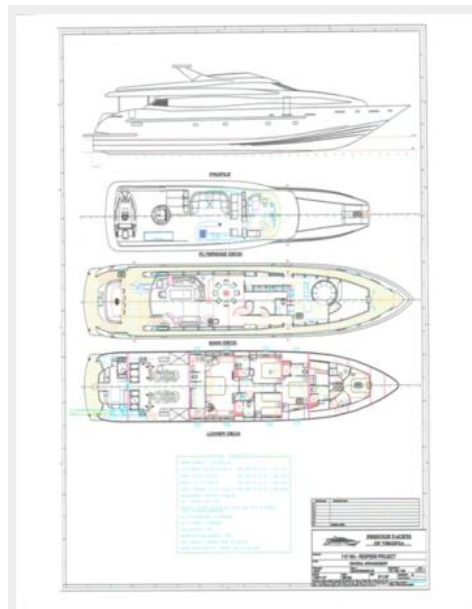
Walk-in-marble-shower



Walk-in-marble-shower



Line Drawings



CONTACTS

Andrey Shestakov, leading yacht broker of the sales department of Shestakov Yacht Sales Inc. Shestakov Yacht Sales Inc., the official representative of the Miami/Fort Lauderdale FL headquarters.

Contact details

Email: andrey@shestakovyachtsales.com

Web: shestakovyachtsales.com/en/

Telephones

USA: +1(954)274-4435

Office hours

Monday – Saturday: **9:00 - 21:00** EDT

Sunday: **closed**

Address



Harbour Towne Marina, 850 NE 3rd St,
STE 213, Dania, FL 33004