

52' AZIMUT 50 FLYBRIDGE M/Y FORTUNATO — AZIMUT



Builder: AZIMUT

Year Built: 2016

Model: Motor Yacht

Price: PRICE ON APPLICATION

Location: United States

LOA: 52' 1" (15.87m)

Beam: 15' 3" (4.65m)

Max Draft: 4' 11" (1.50m)

Cruise Speed: 26 Kts. (30 MPH)

Max Speed: 32 Kts. (37 MPH)

Our experienced yacht broker, Andrey Shestakov, will help you choose and buy a yacht that best suits your needs 52' Azimut 50 Flybridge M/Y Fortunato — AZIMUT from our catalogue. Presently, at Shestakov Yacht Sales Inc., we have a wide variety of yachts available on our sale's list. We also work in close contact with all the big yacht manufacturers from all over the world.

If you would like to buy a yacht 52' Azimut 50 Flybridge M/Y Fortunato — AZIMUT or would like help answering any questions concerning purchasing, selling or chartering a yacht, please call +1(954)274-4435

TABLE OF CONTENTS

TABLE OF CONTENTS	2
SPECIFICATIONS	4
Overview	4
Basic Information	4
Dimensions	4
Speed, Capacities and Weight	4
Accommodations	5
Hull and Deck Information	5
Engine Information	5
DETAILED INFORMATION	6
Main Features:	6
Electronics:	6
Interior Features:	6
Electrical Equipment:	7
Exterior Features:	7
Exterior Upgrades:	7
Interior Upgrades:	8
Salon:	8
Galley:	8
Master Stateroom:	9
Master Head:	9
VIP Stateroom:	9
VIP Head:	10
Guest Stateroom - Starboard:	10
Crew Cabin:	10
Crew Head:	11
Exclusions	11
Disclaimer	11

PHOTOS	12
CONTACTS	17
Contact details	17
Telephones	17
Office hours	17
Address	17

SPECIFICATIONS

Overview

2016 Azimut 50 Flybridge M/Y Fortunato

Inspired by the world of megayachts, the Azimut 50 Flybridge, with a 183 sq ft cockpit, is one of the largest yachts in her class. Fortunato, a 2016 model, is the perfect yacht for weekend excursions with the family, courtesy of the yacht's superior ride and ample storage.

The spacious interior accommodates guests comfortably in three cabins plus crew. The salon and dining area are guaranteed relaxation zones. A separate, independent galley is below deck and conveniently leads to the cabins.

Fortunato is easy to preview at Turnberry Marina in Aventura, FL.

Basic Information

Category: Motor Yacht

Sub Category: Flybridge

Model Year: 2016

Year Built: 2016

Country: United States

Fly Bridge: Yes

Dimensions

LOA: 52' 1" (15.87m)

Beam: 15' 3" (4.65m)

Max Draft: 4' 11" (1.50m)

Speed, Capacities and Weight

Cruise Speed: 26 Kts. (30 MPH)

Max Speed: 32 Kts. (37 MPH)

Displacement: 54670 Pounds

Water Capacity: 156 Gallons

Fuel Capacity: 555 Gallons

Accommodations

Total Cabins: 3

Sleeps: 6

Total Heads: 2

Crew Heads: 1

Hull and Deck Information

Hull Material: Fiberglass

Hull Configuration: Deep Vee

Exterior Designer: Stefano Righini

Engine Information

Engines: 1

Manufacturer: Volvo Penta

DETAILED INFORMATION

Main Features:

- Twin Volvo Penta D11 670Hp (618 engine hours as of February 2020)
- 20kW generator (1200 hours as of February 2020)
- Metallic blue hull paint
- Seakeeper gyro stabilizer
- Built to US specifications
- Bow thruster
- Xenta joystick, hardwired to both helms
- Hardtop with sunroof
- Full beam master stateroom, midships
- Fully-equipped galley
- Gangway/passerelle
- Bose surround sound system
- LED lighting, exterior and interior
- Teak deck on flybridge/swim platform/side decks
- Crew cabin, fully furnished with A/C
- Refrigerator / ice maker in cockpit
- Large seating area on the bow
- Extra wide flybridge including dining area, sun pad and galley

Electronics:

- Radar
- TV set
- Autopilot
- CD player
- Depth sounder
- VHF
- Plotter
- Radio
- Navigation center
- DVD player
- Cockpit speakers
- GPS
- Compass
- Repeater(s)

Interior Features:

- Battery charger
- Hot water
- Heating
- Manual bilge pump
- Air conditioning
- Microwave oven
- Refrigerator
- Electric head
- Bow thruster
- Electric bilge pump
- Deep freezer

Electrical Equipment:

- Generator (20 kw)
- Shore power inlet
- Inverter
- Electrical circuit: 110V

Exterior Features:

- Cockpit table
- Liferaft
- Cockpit shower
- Teak side decks
- Cockpit cushions
- Swim ladder
- Passerelle
- Teak cockpit
- Electric windlass

Exterior Upgrades:

- Xenta joystick control lower helm and upper helm
- Fiberglass hardtop with retractable shade
- Telescopic gangway/passerelle
- Hydraulic swim platform with teak deck
- Flybridge furniture at the aft area of the fly area
- Sunpads in bow section
- Flybridge entertainment area with wet bar (BBQ, sink & refrigerator)
- Crew cabin with air conditioning and head

- Cockpit refrigerator (drawer-type refrigerator)
- Oskar cockpit chairs
- Teak laid deck on swim platform, aft cockpit, side deck, stair to fly and flybridge
- LED lighting (all dimmed, inside and outside)
- Underwater lights
- Canvas for all section of the yachts
- Oil change system
- Glendenning cable system

Interior Upgrades:

- Wooden floor in salon and dinette
- Sofa bed in the salon
- Decorative light in salon
- Miele galley appliances (convection/microwave and cooktop)
- Wine cooler
- Central vacuum
- Bose hifi system in all rooms
- TV in each stateroom and salon (hi-lo) with Bose lifestyle surround sound
- Flybridge speakers

Salon:

- Wooden flooring
- Wooden cupboards
- C-shaped sofa to starboard
- Roman blinds for stern windows and sliding blind aft door
- TV
- Bose surround sound speakers
- Dinette to port across from lower helm

Galley:

- Access to staterooms
- Miele appliances
- Ceramic glass range with 4 burners
- Overhead extraction fan hood
- Refrigerator / freezer
- Microwave oven
- Stainless steel sink

Master Stateroom:

- Queen sized bed
- Wardrobe with shelves
- Hanging wardrobe to port
- Vanity with mirror
- Bedside tables (2)
- Cabinets with door and shelves on both sides
- Portlights (2)
- Private access to en-suite head
- Metal venetian blinds
- Fabric wall upholstery and wood paneling
- Flat screen TV system

Master Head:

- Private access from owner's stateroom
- GRP top and cognac color sink
- Separate shower enclosure
- Tecma toilet
- Wall unit with 1 openable door next to washbasin top and under-cabinet with shelves
- Spotlights
- Portlight
- Metal venetian blinds
- Non-slip GRP flooring in shower
- Air extractor

VIP Stateroom:

- Double centerline berth with large locker underneath
- Wooden headboard
- Hanging wardrobe closet to starboard
- Wardrobe closet to port
- Direct access to guest head
- Mirror inside wardrobe
- Escape exit in ceiling through concealed hatchway to exterior sunbed area
- Round portlights (2) inserted in windows
- Air conditioning system control panel
- Metal venetian blinds
- Fabric-upholstered bulwarks and head linings

VIP Head:

- Located portside next to VIP Stateroom
- Wash basin with GRP top
- Separate shower enclosure with glass door
- Under basin cabinet with shelves
- Direct access from the VIP cabin or from the corridor
- GRP counter top & Cognac colored sink
- Tecma toilet
- Chrome shower rail
- Spotlights
- Metal blinds
- Non-slip GRP flooring in shower
- Air extractor
- Portlight

Guest Stateroom - Starboard:

- Guest beds (2)
- Bedside table next to beds
- Wardrobe closet with coat rack and shelves
- Lockers under bed
- Openable round portlight
- Metal venetian blinds
- Carpeted floor
- Separate AC control panel
- Spotlights
- Access to head leading to corridor

Crew Cabin:

- Located aft under seating in aft deck
- Access from cockpit bench
- Single bed with under-bed storage
- Wall unit
- Wardrobe
- Cabinet in head
- Fabric bulwark upholstery
- GRP ceiling and upholstered panels
- Bulwark shelves
- Round portlight over cockpit bench
- GRP non-slip floor

- Spotlights
- Fabric blind

Crew Head:

- Tecma marine toilet
- White resin sink
- Shower area with waterproof curtain
- Wall unit with mirror
- Under sink door
- Power socket
- Head accessories

Exclusions

Owner's personal belongings.

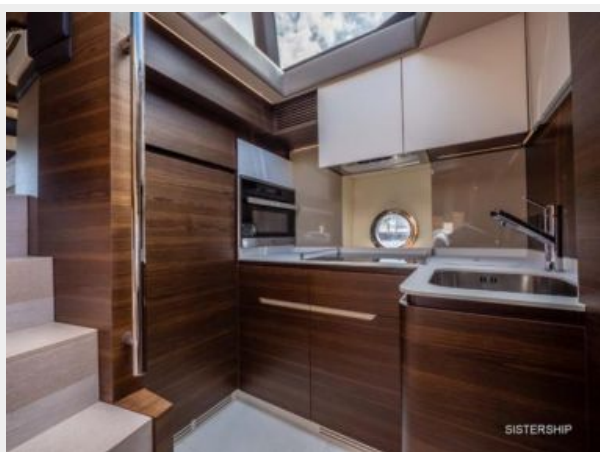
Disclaimer

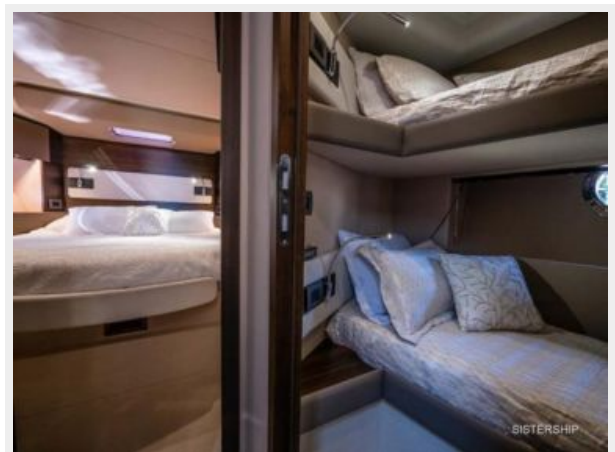
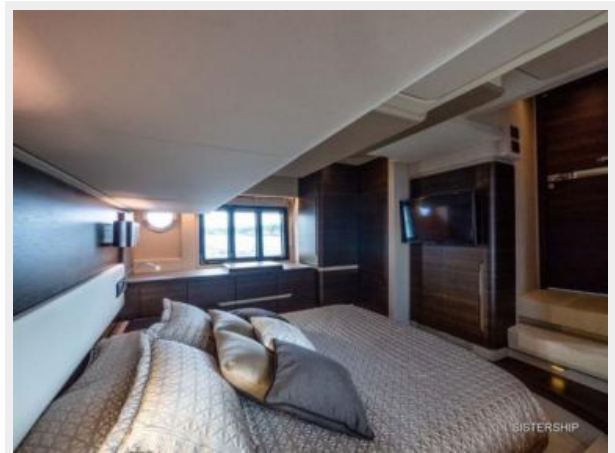
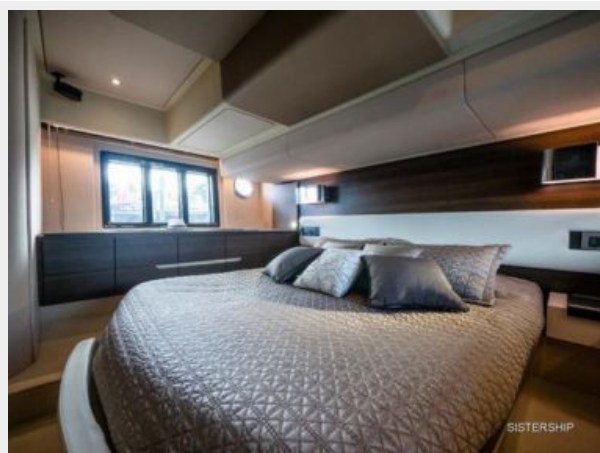
The Company offers the details of this vessel or yacht in good faith but cannot guarantee or warrant the accuracy of this information nor warrant the condition of the vessel. A buyer should instruct his representatives, agents, or his surveyors, to investigate such details as the buyer desires validated. This vessel or yacht is offered subject to prior sale, price change, or withdrawal without notice.

PHOTOS











CONTACTS

Andrey Shestakov, leading yacht broker of the sales department of Shestakov Yacht Sales Inc. Shestakov Yacht Sales Inc., the official representative of the Miami/Fort Lauderdale FL headquarters.

Contact details

Email: andrey@shestakovyachtsales.com

Web: shestakovyachtsales.com/en/

Telephones

USA: +1(954)274-4435

Office hours

Monday – Saturday: **9:00 - 21:00** EDT

Sunday: **closed**

Address



Harbour Towne Marina, 850 NE 3rd St,
STE 213, Dania, FL 33004