

## SEA B'S — NAVIGATOR



**Builder:** NAVIGATOR

**LOA:** 48' 0" (14.63m)

**Year Built:** 1999

**Beam:** 15' 0" (4.57m)

**Model:** Motor Yacht

**Price:** PRICE ON APPLICATION

**Location:** United States

Our experienced yacht broker, Andrey Shestakov, will help you choose and buy a yacht that best suits your needs **Sea B's — NAVIGATOR** from our catalogue. Presently, at Shestakov Yacht Sales Inc., we have a wide variety of yachts available on our sale's list. We also work in close contact with all the big yacht manufacturers from all over the world.

If you would like to buy a yacht **Sea B's — NAVIGATOR** or would like help answering any questions concerning purchasing, selling or chartering a yacht, please call **+1(954)274-4435**

# TABLE OF CONTENTS

TABLE OF CONTENTS	2
SPECIFICATIONS	5
Overview	5
Basic Information	5
Dimensions	5
Speed, Capacities and Weight	5
Accommodations	6
Hull and Deck Information	6
Engine Information	6
DETAILED INFORMATION	7
Galley and Salon	7
Pilothouse and Lower Helm	7
Master Stateroom, Head, and Shower	7
VIP Stateroom with Head and Shower	8
Washer and Dryer	8
Electronics and Flybridge	8
Hydraulic Lift and Tender	8
Exterior and Cockpit	9
Engine Room	9
Disclaimer	9
Exclusions	9
Disclaimer	9
PHOTOS	11
2	11
3	11
4	11
5	11
6	11

7	11
8	12
9	12
10	12
11	12
12	12
13	12
14	13
15	13
16	13
17	13
18	13
19	13
20	14
21	14
22	14
23	14
24	14
25	14
26	15
27	15
28	15
29	15
30	15
31	15
32	16
33	16
34	16
35	16

36	16
37	16
38	17
39	17
40	17
41	17
42	17
43	17
44	18
45	18
46	18
47	18
48	18
49	18
50	19
CONTACTS	20
Contact details	20
Telephones	20
Office hours	20
Address	20

# SPECIFICATIONS

## Overview

The 4800 is one of Navigator's most successful models. Powered by twin Volvo 370HP diesels, this boat is a great choice if you are in the market for a two stateroom, two head Pilothouse Motor Yacht. With having many upgrades and being a " no shoe" boat she shows way newer than her actual age.

This boat has a full beam salon that is tastefully finished with rich Maple cabinets and trim, As well as a large comfortable sofa to kick back and relax on. Moving forward from the salon is a home sized galley with full-size refrigerator/ freezer and tons of storage. Up two steps is the U-shaped dinette to port and lower helm with deck access door to starboard. Companionway steps lead from the pilothouse down to the staterooms. The full beam master is aft, and the VIP is forward, both cabins have their own head and showers.

This boat is ready to get under way and is the definition of turn key. Come see for yourself, call for an appointment today before its too late!

## Basic Information

Category: Motor Yacht	Model Year: 1999
Year Built: 1999	Country: United States

## Dimensions

LOA: 48' 0" (14.63m)	Beam: 15' 0" (4.57m)
----------------------	----------------------

## Speed, Capacities and Weight

Displacement: 37000 Pounds	Water Capacity: 130 Gallons
Holding Tank: 70 Gallons	Fuel Capacity: 500 Gallons

---

## Accommodations

---

**Total Cabins:** 2

---

## Hull and Deck Information

---

**Hull Material:** Fiberglass

---

## Engine Information

---

**Engines:** 2

**Manufacturer:** Volvo

**Model:** TAMD63P

**Engine Type:** Inboard

**Fuel Type:** Diesel

---

## DETAILED INFORMATION

---

### Galley and Salon

---

- 4 Zone AC Marine Air Systems
- Sharp Carousel Microwave
- Nova Kool Fridge/ Freezer
- Princess 3 Burner Electric Stove
- 20 Gallon Hot Water System
- Wood Galley Floor
- Vizio Flat Screen TV
- Birds Eye Maple Interior Wood Decor
- Central Vacuum System
- Leather Salon Sofa
- Bose Stereo Speaker System

### Pilothouse and Lower Helm

---

- Large U Shaped Dinette
- Captains Chair
- Side-Power Bow and Stern Thruster Controls
- Nextbook Laptop Reads the Flybridge Raymarine Display
- Standard Horizon VHF Radio
- Raytheon RP 650 Autopilot
- Rudder Angle Indication
- Trim Tab Controls

### Master Stateroom, Head, and Shower

---

- Island Style Walk Around Queen Bed
- Vizio Flat Screen TV with Direct TV Tracvision Satallite Antenna
- Two Large Cedar Lined Hanging Lockers
- Vacu Flush Head System
- Macerator with Overboard Discharge
- Large Sink Countertop

---

## VIP Stateroom with Head and Shower

---

- Large and Comfortable Bed
- Vizio Flat Screen TV
- Vacu Flush Head System
- Stall Shower
- Macerator
- Huge Hanging Locker

---

## Washer and Dryer

---

- Individual space saver Magic Chef washer and GE Spacemaker dryer are located in a closet in the master stateroom. They are not a combo unit but stand alone units.

---

## Electronics and Flybridge

---

- Raymarine Axiom 12" GPS, Radar and Depthfinder. With Real Vision 3-D Sonar
- Standard Horizon Matrix AIS, GPS and VHF
- Fusion MSUD755 Stereo
- Side-Power Stern and Bow Thrusters
- Rudder Angle Indicator
- Trim Tab Controls
- Wet Bar with Jenn Air Grill and Whynter Fridge/ Freezer
- Bimini Top
- Canvas Covers for Pilot House Door, Helm, Helm Seat, Wet Bar, and Two L Shaped Seats
- Double Wide Helm Seat
- Two L Shaped Bench Seats
- Open Aft Area with Storage Box

---

## Hydraulic Lift and Tender

---

- Sea Lift Hydraulic Lift for Tender
- Hard Wire Control for Remote Control
- Lift was Installed in 2015
- Logic 12' Tender (2001)
- Tender Cover



---

## Exterior and Cockpit

---

- Underwater Lights, Blue and White Add a Great Look
- Cockpit Also Has Blue and White Accent Lighting
- Windlass with Chain and Line
- Transom Shower
- Molded in Swim Platform
- Remote Spotlight
- Rod Holders

---

## Engine Room

---

- Volvo TAMD63P Engines Rated at 370 hp
- Glendinning Engine Synchronizer
- Hydraulic Shift and Throttles
- Hydraulic Steering
- Dripless Shaft Seals
- Oil Change System for Engines and Generator
- Two Spare Props
- Kohler 9KW Generator
- Generator Sound Shield
- 50 Amp Shore Power
- Glendinning Cablemaster With 75' of Cord
- Remote Control for Cablemaster
- Bow and Stern Thrusters
- 2 Battery Chargers
- Battery ON/OFF Switch

---

## Disclaimer

---

The Company offers the details of this vessel in good faith but cannot guarantee or warrant the accuracy of this information nor warrant the condition of the vessel. A buyer should instruct his agents, or his surveyors, to investigate such details as the buyer desires validated. This vessel is offered subject to prior sale, price change, or withdrawal without notice.

---

## Exclusions

---

Owner's personal belongings.

---

## Disclaimer

---

The Company offers the details of this vessel or yacht in good faith but cannot guarantee or warrant the accuracy of this information nor warrant the condition of the vessel. A buyer should instruct his representatives, agents, or his surveyors, to investigate such details as the buyer desires validated. This vessel or yacht is offered subject to prior sale, price change, or withdrawal without notice.

# PHOTOS

2



3



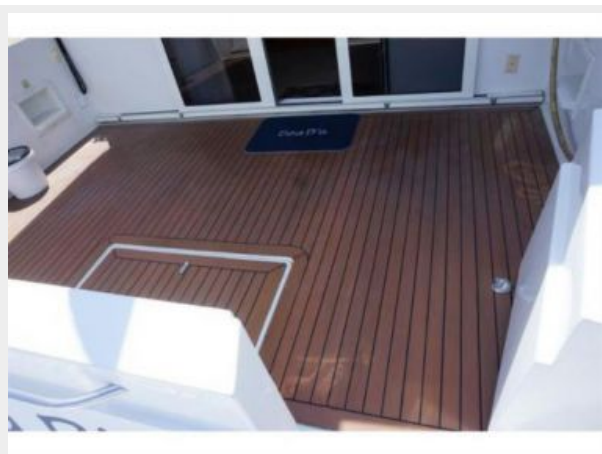
4



5



6



7



8



9



10



11



12



13





14



15



16



17



18



19



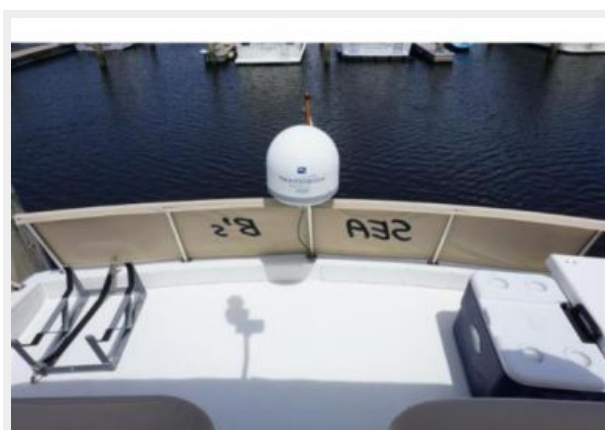
20



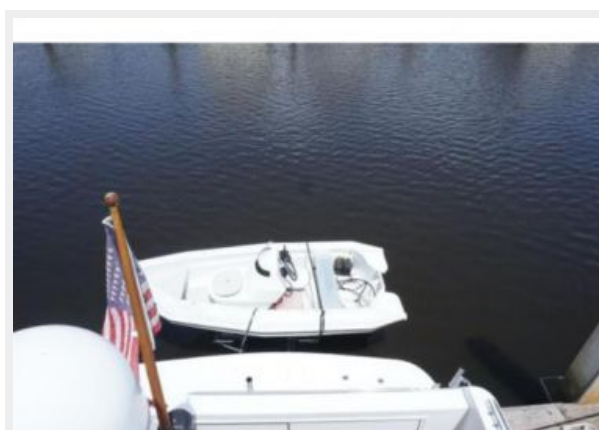
21



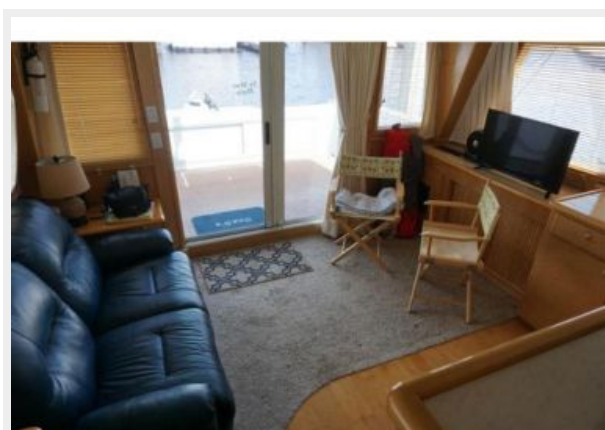
22



23



24

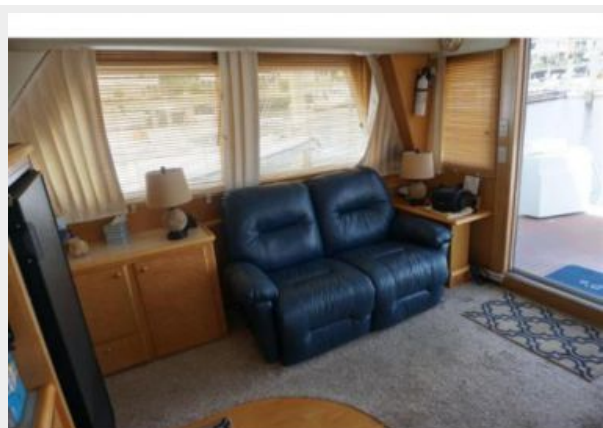


25

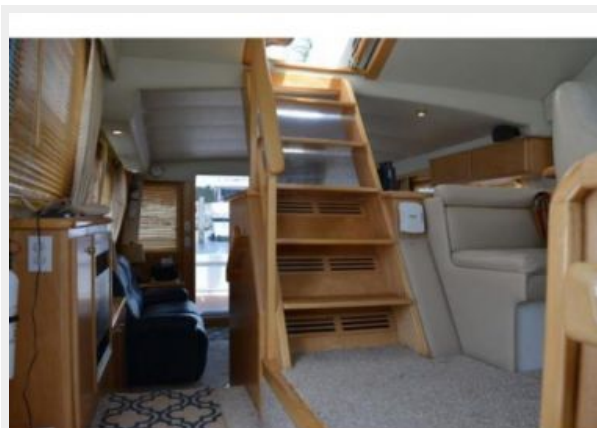




26



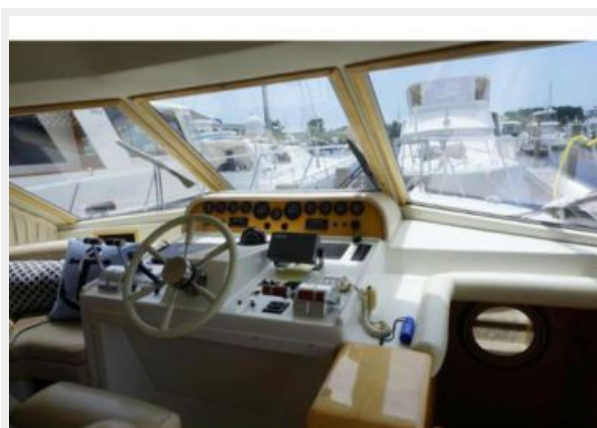
27



28



29



30



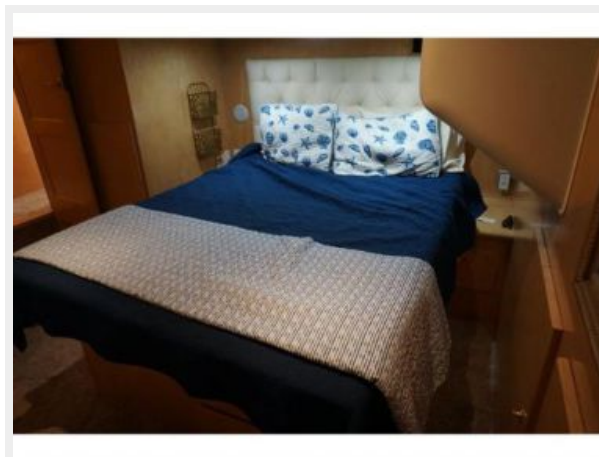
31



32



33



34



35



36



37

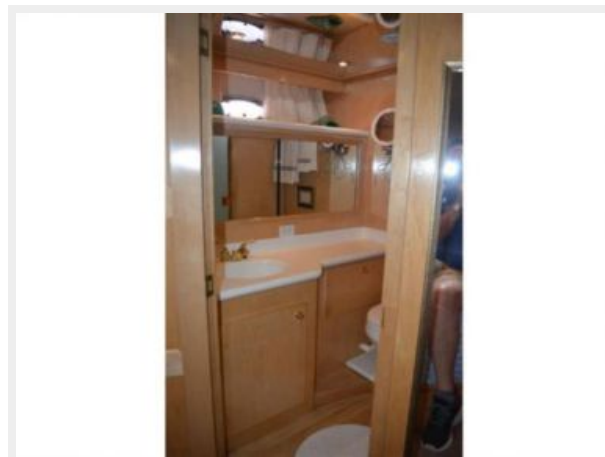




38



39



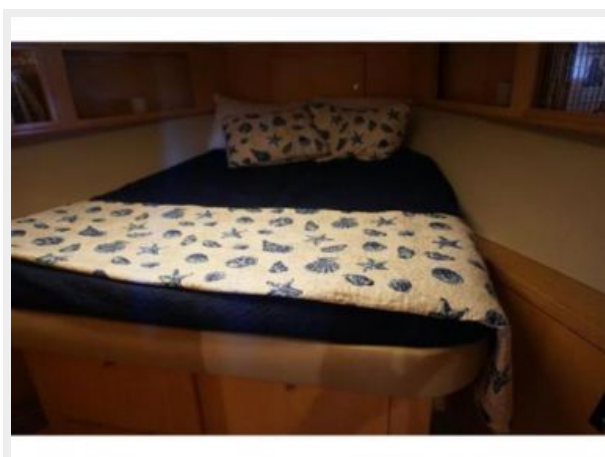
40



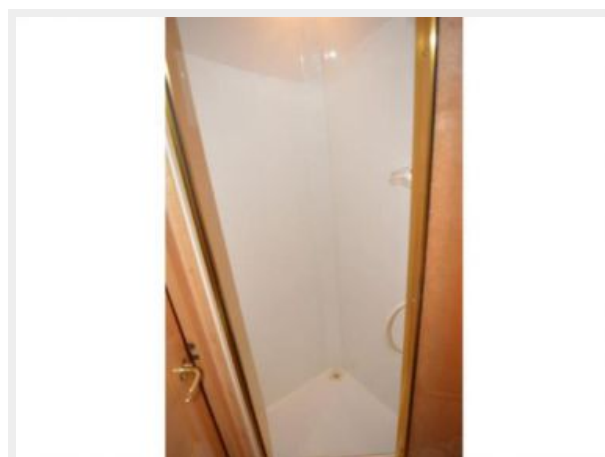
41



42



43



44



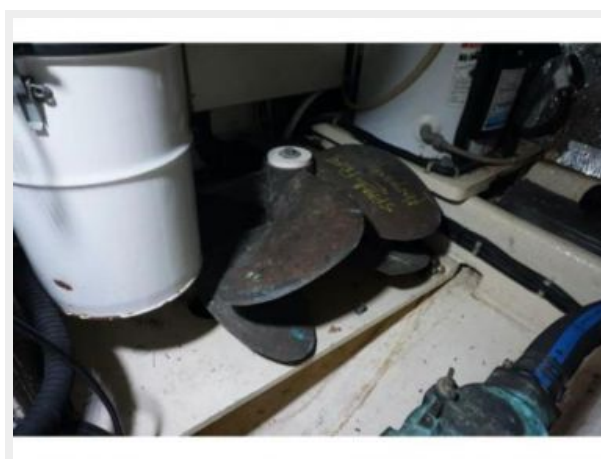
45



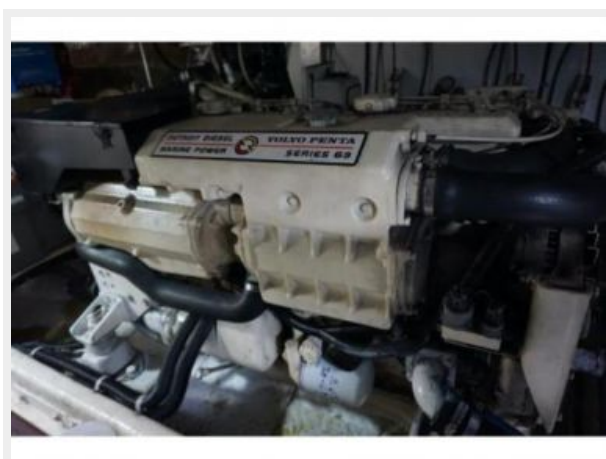
46



47



48



49



50



# CONTACTS

---

Andrey Shestakov, leading yacht broker of the sales department of Shestakov Yacht Sales Inc. Shestakov Yacht Sales Inc., the official representative of the Miami/Fort Lauderdale FL headquarters.

## Contact details

---

Email: **andrey@shestakovyachtsales.com**

Web: [shestakovyachtsales.com/en/](http://shestakovyachtsales.com/en/)

## Telephones

---

USA: **+1(954)274-4435**

## Office hours

---

Monday – Saturday: **9:00 - 21:00 EDT**

Sunday: **closed**

## Address

---



Harbour Towne Marina, 850 NE 3rd St,  
STE 213, Dania, FL 33004