

EXTRAVAGANCE — BRISTOL YACHTS



Builder: BRISTOL YACHTS

Year Built: 1980

Model: Sloop

Price: PRICE ON APPLICATION

Location: United States

LOA: 35' 0" (10.67m)

Beam: 10' 10" (3.30m)

Min Draft: 3' 9" (1.14m)

Max Draft: 9' 6" (2.90m)

Cruise Speed: 6.5 Kts. (7 MPH)

Max Speed: 7.5 Kts. (9 MPH)

Our experienced yacht broker, Andrey Shestakov, will help you choose and buy a yacht that best suits your needs **Extravagance — BRISTOL YACHTS** from our catalogue. Presently, at Shestakov Yacht Sales Inc., we have a wide variety of yachts available on our sale's list. We also work in close contact with all the big yacht manufacturers from all over the world.

If you would like to buy a yacht **Extravagance — BRISTOL YACHTS** or would like help answering any questions concerning purchasing, selling or chartering a yacht, please call **+1(954)274-4435**

TABLE OF CONTENTS

TABLE OF CONTENTS	2
SPECIFICATIONS	6
Overview	6
Basic Information	6
Dimensions	6
Speed, Capacities and Weight	7
Accommodations	7
Hull and Deck Information	7
Engine Information	7
DETAILED INFORMATION	8
MAIN DESCRIPTION	8
BRISTOL 35.5C - EXTRAVAGANCE - MEDIA	8
BRISTOL 35.5C - EXTRAVAGANCE - WALKTHROUGH	8
BRISTOL 35.5C - EXTRAVAGANCE - ACCOMODATIONS	10
BRISTOL 35.5C - EXTRAVAGANCE - COCKPIT	10
BRISTOL 35.5C - EXTRAVAGANCE - HELM	11
BRISTOL 35.5C - EXTRAVAGANCE - ELECTRONICS	11
BRISTOL 35.5C - EXTRAVAGANCE - DECK & HULL	11
BRISTOL 35.5C - EXTRAVAGANCE - RIG	11
BRISTOL 35.5C - EXTRAVAGANCE - SAILS & CANVAS	12
BRISTOL 35.5C - EXTRAVAGANCE - MAIN CABIN	12
BRISTOL 35.5C - EXTRAVAGANCE - V-BERTH	12
BRISTOL 35.5C - EXTRAVAGANCE - HEAD	13
BRISTOL 35.5C - EXTRAVAGANCE - MECHANICAL	13
BRISTOL 35.5C - EXTRAVAGANCE - ELECTRICAL	13
BRISTOL 35.5C - EXTRAVAGANCE - SAFETY	13
BRISTOL 35.5C - EXTRAVAGANCE - TENDER	14
BRISTOL 35.5C - EXTRAVAGANCE - MAINT. & UPGRADES	14

DISCLAIMER	14
Exclusions	14
Disclaimer	14
PHOTOS	16
Bristol 35.5 - Extravagance - 1	16
Bristol 35.5 - Extravagance - 6	16
Bristol 35.5 - Extravagance - 7	16
Bristol 35.5 - Extravagance - 8	16
Bristol 35.5 - Extravagance - 9	17
Bristol 35.5 - Extravagance - 10	17
Bristol 35.5 - Extravagance - 11	17
Bristol 35.5 - Extravagance - 12	17
Bristol 35.5 - Extravagance - 13	17
Bristol 35.5 - Extravagance - 14	17
Bristol 35.5 - Extravagance - 16	18
Bristol 35.5 - Extravagance - 15	18
Bristol 35.5 - Extravagance - 17	18
Bristol 35.5 - Extravagance - 18	18
Bristol 35.5 - Extravagance - 19	18
Bristol 35.5 - Extravagance - 20	18
Bristol 35.5 - Extravagance - 21	19
Bristol 35.5 - Extravagance - 22	19
Bristol 35.5 - Extravagance - 23	19
Bristol 35.5 - Extravagance - 24	19
Bristol 35.5 - Extravagance - 25	19
Bristol 35.5 - Extravagance - 26	19
Bristol 35.5 - Extravagance - 27	20
Bristol 35.5 - Extravagance - 28	20
Bristol 35.5 - Extravagance - 30	20

Bristol 35.5 - Extravagance - 29	20
Bristol 35.5 - Extravagance - 31	20
Bristol 35.5 - Extravagance - 32	20
Bristol 35.5 - Extravagance - 33	21
Bristol 35.5 - Extravagance - 34	21
Bristol 35.5 - Extravagance - 35	21
Bristol 35.5 - Extravagance - 36	21
Bristol 35.5 - Extravagance - 37	21
Bristol 35.5 - Extravagance - 38	21
Bristol 35.5 - Extravagance - 40	22
Bristol 35.5 - Extravagance - 39	22
Bristol 35.5 - Extravagance - 41	22
Bristol 35.5 - Extravagance - 42	22
Bristol 35.5 - Extravagance - 43	22
Bristol 35.5 - Extravagance - 44	22
Bristol 35.5 - Extravagance - 46	23
Bristol 35.5 - Extravagance - 45	23
Bristol 35.5 - Extravagance - 47	23
Bristol 35.5 - Extravagance - 48	23
Bristol 35.5 - Extravagance - 50	24
Bristol 35.5 - Extravagance - 49	24
Bristol 35.5 - Extravagance - 51	24
Bristol 35.5 - Extravagance - 52	24
Bristol 35.5 - Extravagance - 53	24
Bristol 35.5 - Extravagance - 54	24
Bristol 35.5 - Extravagance - 55	25
Bristol 35.5 - Extravagance - 56	25
Bristol 35.5 - Extravagance - 57	25
Bristol 35.5 - Extravagance - 58	25

Bristol 35.5 - Extravagance - 59b	25
Bristol 35.5 - Extravagance - 59a	25
Bristol 35.5 - Extravagance - 60	26
Bristol 35.5 - Extravagance - 61	26
Bristol 35.5 - Extravagance - 62b	26
Bristol 35.5 - Extravagance - 62a	26
Bristol 35.5 - Extravagance - 63	26
Bristol 35.5 - Extravagance - 64	26
Bristol 35.5 - Extravagance - 66	27
Bristol 35.5 - Extravagance - 65	27
Bristol 35.5 - Extravagance - 68a	27
Bristol 35.5 - Extravagance - 67	27
Bristol 35.5 - Extravagance - 68b	28
Bristol 35.5 - Extravagance - 68c	28
Bristol 35.5 - Extravagance - 69	28
CONTACTS	29
Contact details	29
Telephones	29
Office hours	29
Address	29

SPECIFICATIONS

Overview

The Bristol 35.5C is a high quality, solidly built boat that has withstood the test of time. Designed by Ted Hood and built by Bristol Yachts in Bristol Rhode Island, Extravagance is an outstanding example of a centerboard cruising boat. Hood knew more about designing centerboard cruising boats than anyone and he designed a winner in the 35.5C, saying "This one just turned out great. She goes right along, doesn't she!" He even owned one himself. One of the few that have been properly cared for throughout her life, Extravagance is truly a beautiful boat that is turn-key and ready to sail today. With her centerboard up she draws just 3 feet 9 inches. Couple that with her excellent light to moderate air performance and the 35.5C is a clear choice for the Chesapeake, and with her reputation as a sea kindly boat, she can take you well beyond. One owner reported "On a broad reach in 35-knot winds, big seas, sailing under the genoa reefed down to ~90 percent, I was amazed to find the motion relatively smooth, like a train on a track." Another said "I have experienced motor sailing into 5- to 8-foot swells, alongside a friend's boat ... the other boat pounded so hard they slowed down to avoid damaging the very well-built boat. Our Bristol sliced through the waves, without pounding, maintaining our usual speed and comfort." Purchased at the Annapolis boat show in 1980 just 6 months after her commissioning, Extravagance's owner has meticulously maintained her ever since. This yacht is clean, neat and shows extremely well. She is in better shape than many boats 1/3 her age and is one of the finest 35.5C's on the market today. Seeing is believing, don't miss the virtual tour, video tour and slideshow links below, and call for a showing today!

Basic Information

Category: Sloop

Model Year: 1980

Year Built: 1980

Country: United States

Dimensions

LOA: 35' 0" (10.67m)

Beam: 10' 10" (3.30m)

Min Draft: 3' 9" (1.14m)

Max Draft: 9' 6" (2.90m)

Speed, Capacities and Weight

Cruise Speed: 6.5 Kts. (7 MPH)

Max Speed: 7.5 Kts. (9 MPH)

Displacement: 15000 Pounds

Water Capacity: 112 Gallons

Holding Tank: 54 Gallons

Fuel Capacity: 30 Gallons

Accommodations

Total Cabins: 1

Total Heads: 1

Hull and Deck Information

Hull Material: Fiberglass

Engine Information

Engines: 1

Manufacturer: Yanmar

Model: 3JH5E

Engine Type: Inboard

Fuel Type: Diesel

DETAILED INFORMATION

MAIN DESCRIPTION

The Bristol 35.5C is a high quality, solidly built boat that has withstood the test of time. Designed by Ted Hood and built by Bristol Yachts in Bristol Rhode Island, Extravagance is an outstanding example of a centerboard cruising boat. Hood knew more about designing centerboard cruising boats than anyone and he designed a winner in the 35.5C, saying "This one just turned out great. She goes right along, doesn't she!" He even owned one himself. One of the few that have been properly cared for throughout her life, Extravagance is truly a beautiful boat that is turn-key and ready to sail today. With her centerboard up she draws just 3 feet 9 inches. Couple that with her excellent light to moderate air performance and the 35.5C is a clear choice for the Chesapeake, and with her reputation as a sea kindly boat, she can take you well beyond. One owner reported "On a broad reach in 35-knot winds, big seas, sailing under the genoa reefed down to ~90 percent, I was amazed to find the motion relatively smooth, like a train on a track." Another said "I have experienced motor sailing into 5- to 8-foot swells, alongside a friend's boat ... the other boat pounded so hard they slowed down to avoid damaging the very well-built boat. Our Bristol sliced through the waves, without pounding, maintaining our usual speed and comfort." Purchased at the Annapolis boat show in 1980 just 6 months after her commissioning, Extravagance's owner has meticulously maintained her ever since. This yacht is clean, neat and shows extremely well. She is in better shape than many boats 1/3 her age and is one of the finest 35.5C's on the market today. Seeing is believing, don't miss the virtual tour, video tour and slideshow links below, and call for a showing today!

BRISTOL 35.5C - EXTRAVAGANCE - MEDIA

Walkthrough Video: Virtual Tour: Slide Show: Practical Sailor Review: Spinsheet Magazine Review: BristolYachts.Org 35.5C Page: Maintenance and Upgrade Log *: Operating Guide *: * These two owner created documents are a testament to his thorough attention to detail and pride of ownership. They demonstrate his outstanding stewardship of this vessel over the years and offer a wealth of information on the boat, her equipment, performance characteristics and operation.

BRISTOL 35.5C - EXTRAVAGANCE - WALKTHROUGH

COCKPIT: The cockpit is spacious and provides plenty of room to sail the boat with a full crew, as well as a great space to entertain at anchor or dockside. It features a pedestal helm with a stainless wheel, binnacle mounted compass, throttle and gear shift, wheel lock, chart plotter mount, stainless steel hand hold and folding table. The engine control panel is found on the starboard forward bulkhead. Depth, speed and wind instruments are mounted on the cabin-top above the companionway, which is protected by a dodger and complimented by a Bimini. Stereo speakers are mounted midway along the port and starboard coamings along with two teak

trimmed cubby lockers forward. An emergency bilge pump is located on the aft well bulkhead, starboard side, with the 30 amp electrical hookup found adjacent on the starboard well bulkhead. A swim ladder, flagstaff mount and stern light are mounted on the transom. Seating for 7 is provided by port and starboard benches and a stern bench, which features a raised helmsman's seat. Lockers are found under the benches, and the sole features two teak deck grates. Two Lewmar 44 two speed self-tailing winches are mounted forward on the coaming port and starboard for head sail trim. The mainsheet traveler is center mounted to the pedestal. TOPSIDES: Moving forward the deck, surrounded by a teak toe rail, is protected by stainless steel bow and stern railings connected by dual lifelines running the length of the boat port and starboard. Gates are found at the cockpit, port and starboard. Teak hand holds run along the cabin top, port and starboard, along with two, center mounted opening hatches, one mid-way the other forward. Two dorade boxes are found port and starboard of the mast. The anchor is roller mounted at the bow. There is also an anchor locker at the bow and a thru deck fitting to the chain locker. Cleats are found port and starboard at the bow, midship and the stern. The single spreader, keel stepped rig is supported by wire standing rigging and a roller furler. Two halyard winches are mounted on the mast. A Lewmar 8 single speed on the starboard and a Lewmar 16 two speed on the port side. Jib tracks run along the port and starboard side decks and four scuppers, two port, two starboard are found just forward of the cockpit. MAIN CABIN: With teak joinery and appointments, blue and white striped cushions and a teak & ash sole, the spacious main cabin is a bright and inviting space. Entering the cabin from the cockpit companionway, the L-shaped galley is found to starboard and the large refrigerator and nav station to port. A port settee with seating for three extends fore and aft along the length of the salon forward of the refrigerator. On the starboard side forward of the galley a settee provides seating for three, and features a stowable bunk above. Storage lockers are found behind the settees, with additional storage below along with a water tank underneath each. A deck mounted folding dining table is mounted between the settees, and features 2 folding leaves, a bottle well and a drawer for flatware. Shelves and a storage locker run the length of the salon above both settees. Teak hand holds are overhead mounted above both settees, and fiddles run the length of the cabin below the port/windows. There is one overhead lamp and two reading lamps mounted on the forward bulkheads, port and starboard, with a gimballed kerosene lamp mounted on the forward bulkhead. Ventilation is provided by an overhead opening hatch with screen, and the companionway, which features stowable, outward swinging, double screen doors with plexiglas inserts. Six fixed port/windows with curtains run along the side of the cabin three port, three starboard. A 12 vdc outlet is found above the settee forward on the starboard side. The starboard settee and overhead bunk are 75 inches long, port settee 73 inches, headroom 75 inches. NAV STATION: Found in the aft port side of the main cabin the aft facing nav station features a teak, lift top nav table with seat, VHF radio, AM/FM radio CD player, speaker control panel, USB charging station, refrigerator control panel, overhead lamp, and a aft bulkhead mounted rack. Three lockers are found at the nav station along the vessels port side, along with an additional locker underneath the seat. GALLEY: The galley is found in the aft starboard side of the main cabin and features a L-shaped counter top with a double stainless steel sink mounted along the aft and a counter along the starboard side. The sink features both pressurized hot and cold water and a foot pump operated spigot. The forward counter section slides back for access to a 3 burner CNG stove/oven on gimbles. A large top access refrigerator with locker above is found opposite on the

port side. Three lockers are found above the counter, along with an overhead mounted paper towel holder. An additional three lockers and three drawers are found under the sink, counter and stove, with one countertop access locker next to the sink. There is one overhead light and a 120 vac outlet mounted on the aft bulkhead above the counter. The 120 vac and 12 vdc electrical panels and solenoid switch are mounted on the aft bulkhead above the sink. Two battery bank switches and an volt meter are found on the galley cabinet side next to the companionway. Headroom 74 inches.

V-BERTH:The v-berth features teak joinery and appointments and a teak & ash sole. Access to the v-berth is found through a companionway formed by a double hanging locker with shelf top on the starboard side and a door to the head on the port. There is an opening port with screen above the locker. Additional ventilation provided by an overhead hatch with screen and a dorade vent. The v-berth is forward, with two drawers and 3 lockers underneath. A storage rack for the berth cut out is mounted above the berth, with an additional door to the head located opposite the birth. Shelving runs the length of the v-berth, port and starboard, with a ships clock mounted on the port side shelf rail. A fan is mounted on the forward bulkhead, to starboard of the chain locker's teak double doors. Two lamps are mounted port and starboard on the aft bulkheads. The v-berth is 82 inches long, headroom 74 inches, 33 inches over the berth.

HEAD: The head is found on the port side between the salon and v-berth. There are two doors, one in the companionway, the second in the v-berth. The head features a manual marine toilet and a countertop housing a stainless steel sink with hot & cold running water and shower wand. A mirror, soap dish, cup and toothbrush holder and shower wand mount are found above the sink, with a lamp above the mirror. There are two lockers one above the counter the other beneath. Four drawers are located above the head. A 120 vac outlet is mounted next to the counter by the head, along with the shower sump switch and a black water tank level gauge. Two towel rings are mounted on the forward bulkhead, and towel hooks are found on either door. The shower curtain is mounted overhead on a 360 degree rail. Ventilation is provided by an opening port with screen and a dorade vent. Headroom 74 inches.

ENGINE COMPARTMENT:The engine compartment is found under the cockpit sole and is accessed under the salon companionway stairs and via the port and starboard cockpit lockers.

BRISTOL 35.5C - EXTRAVAGANCE - ACCOMODATIONS

Extravagance can sleep six people. The salon two settees make into double berths, with an additional stowable bunk found above the starboard settee. The v-berth sleeps 2.- V-berth, sleeps 2, 82 inches

Salon Settees:- Port settee converts to a single berth, sleeps 1; 73 inches- Starboard settee convert to a double berth, sleeps 2; 75 inches- Stowable bunk above starboard settee; 75 inches

BRISTOL 35.5C - EXTRAVAGANCE - COCKPIT

The cockpit is in the stern of the boat and features a U layout including:- Bench seating for 7 passengers; 3 port, 3 starboard, 1 aft- Wheel pedestal helm- Folding cockpit table- 2 outdoor stereo speakers- 4 Lockers under the bench seats- 2 Cubby lockers- Companionway to salon; center forward- Swim ladder; transom mounted center

BRISTOL 35.5C - EXTRAVAGANCE - HELM

- Edson pedestal helm with: * stainless destroyer wheel * gear shift and throttle * GPS mount * folding cockpit table * Ritchie magnetic binnacle compass * Stainless steel binnacle hand hold- Engine instrument panel; mounted on starboard cabin bulkhead - Helm seat- Instrument cluster mounted above salon companionway- Emergency tiller

BRISTOL 35.5C - EXTRAVAGANCE - ELECTRONICS

- Garmin GPSMap, 546; helm mounted- NX2 Wind Data - Wind - NX Sea Data - Speed and Depth- Standard Horizon Explorer GPS VHF Radio- Sony CDX-2180 stereo AM/FM radio, CD Player- 4 Stereo speakers

BRISTOL 35.5C - EXTRAVAGANCE - DECK & HULL

- Hull, solid laminate fiberglass- Deck, fiberglass composite with balsa wood core- Anchor locker, foredeck access- Chain locker, v-berth access- Danforth anchor, #20 high strength- 160 ft ³/₄ inch nylon rode, with 14 ft ³/₈ chain- 2 Lewmar 44, two speed, self-tailing winches, cockpit coaming mounted, port and starboard- Lewmar 16 two speed, mast mounted port - Lewmar 8 single speed winch, mast mounted starboard- 3 Winch handles - Centerboard winch handle- 2 Inboard genoa tracks and cars, port and starboard - Headsail sheets- 3 Masthead halyards- Spreader halyard- 2 Dorade vents- 2 Cabin top hatches, with screens- 2 Opening ports, with screens- 6 Fixed port/windows- Companionway hatch boards - 3; with stow away sleeve mounted in starboard cockpit locker- Companionway hatch screen doors with Plexiglas inserts, stowable- 2 Teak hand holds, cabin top mounted, port & starboard- Ships bell, stowed- 6 Cleats; 2 at bow, 2 midship, 2 at stern- 2 CNG long tanks, horizontally mounted in starboard cockpit locker- 3 Cockpit lockers- 4 Deck scuppers- 2 Cockpit scuppers- Stainless steel bow pulpit and stern rail, connected by double life lines with port & starboard gates at cockpit - Navigation, running & anchor lights, LED - Fuel fill; cockpit sole, port side center- Waste pumpout; foredeck starboard- 2 Water fills; midship port and starboard- Magma grill with 2 new propane tanks and a new regulator- Dock lines- Boat hook- 3 Fenders- Fender board- Washdown hose- Thirsty Mate hand pump- Assorted lines and bungee cords - Assorted cleaning supplies

BRISTOL 35.5C - EXTRAVAGANCE - RIG

- Masthead sloop rig - Spars * Aluminum spreader mast w/internal halyards * Aluminum boom- Stainless steel wire standing rigging- Harkin MKIII roller furler- Twing set- Bosuns Chair and various harnesses- Rigging repair toolbox

BRISTOL 35.5C - EXTRAVAGANCE - SAILS & CANVAS

Sails:- Main - 140% Genoa- 110% Genoa- Storm Jip- Cruising Spinnaker
Canvas:- Main sail cover - white - Dodger - blue- Bimini - blue- Cockpit awning- Full winter cover - blue

BRISTOL 35.5C - EXTRAVAGANCE - MAIN CABIN

The main cabin is entered from the cockpit, four steps down via a center companionway. It includes the salon, galley and navstation and features:- Teak joinery and appointments throughout- Teak & Ash sole- 6 Fixed port/windows w/curtains; 3 port, 3 starboard- 1 Overhead opening hatch w/screen, center mounted- Companionway hatch w/hatch boards and stowable teak double screen doors with plexiglass inserts- Hand hold fiddles running the length of the cabin, port and starboard side
SALON:- Port settee; seats 3; converts to a single berth; 73 inches- Starboard settee; seats 3; converts to a double berth; 75 inches- Stowable bunk above starboard settee; 75 inches- Deck mounted teak dining table with two folding leaves, bottle well and flatware drawer - Shelving and one storage locker run length of salon above the settees- 3 front access lockers behind the settees- 2 Front access lockers, one under each settees- 2 Water tanks, one under each settee- 2 Overhead hand holds over settees, port and starboard side- 1 Overhead LED light; 12 vdc- 2 Clarion stereo speakers, mounted above settees, port and starboard- 12 vdc outlet- Headroom 74 inches
NAV STATION:The Navigation Station is located in the aft port side of the main cabin and features:- Standard navigation table with lift top with storage underneath; rear facing- Aft bulkhead mounted magazine rack - Instruments and control panels over and above the navigation table including: * Standard Horizon Explorer GPS VHF Marine Radio with submersible mic * Sony CDX-2180 Stereo Radio CD player * Speaker control panel * Coastal Climate Control Guardian refrigerator control panel- USB charging station- Overhead light; 12 vdc- Battery switch, opposite next to companionway stairs- Volt meter, opposite next to companionway stairs- Locker, beneath seat- Three lockers along vessels port side
GALLEY:The L shaped galley is located in the aft starboard side of the main cabin and features:- L shaped counter tops- Double stainless steel sink hot/cold pressurized water - Foot pump operated cold water spigot- Gimballed Gas Systems three burner CNG stove w/counter top cover- Large top loading refrigerator, opposite on port side- 3 Drawers- 6 Lockers: * 1 under the stove * 1 above stove * 1 under the sink (mechanical locker) * 1 above sink * 1 under counter * 1 above counter * 1 top access in counter- Over counter mounted paper towel holder- Overhead LED light; 12 vdc- 120 vac outlet- Dish rack- Assorted dishes, cups, cookware, flatware, cutlery and cleaning supplies- Headroom 74 inches

BRISTOL 35.5C - EXTRAVAGANCE - V-BERTH

The v-berth is located in front of the salon and features:- Teak joinery and appointments- Teak & Ash sole- V-berth, sleeps 2, 82 inches- 2 front access storage lockers- 1 top access storage locker- 2 drawers- Cabinet with two lockers & top shelf - Shelving running the length of the v-berth on the port & starboard sides- 2 bulkhead mounted LED lamps- Weems & Plath ships clock- Hella turbo fan; 12 vdc- Opening overhead hatch w/screen- Opening port w/screen- Chain

locker access- Black water tank beneath the berth- Headroom: 74 inches, 33 inches over berth

BRISTOL 35.5C - EXTRAVAGANCE - HEAD

The head, which doubles as a shower, is located forward of the main cabin on the port side and includes: - Companionway and v-berth access- Raritan manual marine head- Toilet paper holder- Toilet brush- Counter with stainless steel sink with hot and cold running water- Shower wand- Shower wand mount- Soap dish- Cup/toothbrush holder- 2 Towel rings- 2 towel hooks- Mirror- LED lamp; 12 vdc- Storage above counter- Storage locker; under sink- Three drawers- Shower sump switch- Shower curtain on 360 degree overhead track- 120 vac outlet- Fireboy Xintex LLM-1 Holding Tank Liquid Level Monitor- Opening port with screen- Dorade vent- Various cleaning supplies - Headroom: 74 inches

BRISTOL 35.5C - EXTRAVAGANCE - MECHANICAL

- Yanmar 3JH5E diesel engine, 39HP, fresh water cooled, mfg date 2011- 3 Bladed prop- Racor 500MA fuel filter/water separator- Raw water strainer, bronze- Johnson SPXFLOW house water pump; 41 psi, 18 lpm, Model 10-13395-103- Rule-Matic automated bilge pump, 750 gph- Gusher Galley MK 3, fresh water foot pump- Shower sump pump- Raritan marine water heater 1700 series, 6 gallons, 120 vac & engine heat exchanger, model 170611- Frigoboat marine refrigeration unit; model Frigomatic Capri 36 F- Johnson manual bilge pump, 45 psi, 3.3 gpm, model 7050005- 2 Spare Rule-Mate 750 automated bilge pumps- Spare Shureflow house water pump, model 2088-433-344- Spare engine filters, impellers, belts and absorbent sheets.- Raritan head spare parts kits- Lewmar winch spares - Spare propeller zinc- Jabsco utility hand oil change pump- Mechanical repair tool box- Plumbing repair tool box- Wrench set

BRISTOL 35.5C - EXTRAVAGANCE - ELECTRICAL

- 12 vdc electrical system with distribution panel- 120 vac electrical system with distribution panel- 2 120 vac outlets, GFI protected- 12 vdc LED lighting in all cabins, salon and galley overhead lights are white/red selectable- 3 Marine Master heavy duty deep cycle batteries, CCA 500, MCA 615, model DC24- Mastervolt ChageMaster battery charger, model 12/25-3- 2 Guest battery master switches- Newmar GI330 galvanic isolator- 30 Amp shore power receptacle; cockpit, starboard aft- 2 30 Amp shore power cables - Assorted shore power cable pigtails- 120 vac drop line/extension cord- Electrical repair tool box

BRISTOL 35.5C - EXTRAVAGANCE - SAFETY

- Kidde carbon monoxide alarm- 2 First aid kits- Guest hand held search light, 12 vdc- Lifesling overboard rescue system- Weems & Plath SOS distress light, model C-1001- Flair gun kit; flairs expired- Assorted hand held flares; expired- Assorted aerial flares; expired- 3 Signal whistles-

Signal mirror- Weems & Plath SOS signal flag

BRISTOL 35.5C - EXTRAVAGANCE - TENDER

- West Marine RU 3 tender, 8 ft 6 in - 2012- Honda, 2 HP, 4 stroke outboard- Gas tank- Oars- Foot inflation pump- Anchor with 150 foot of 1/5 inch nylon rode and 6 feet of chain

BRISTOL 35.5C - EXTRAVAGANCE - MAINT. & UPGRADES

The full maintenance and upgrade log dating to 1986 can be found here: 2011:- Repowered with Yanmar engine- Replace drive shaft- Replace propeller- Replace cooling system and hoses- Mastervolt battery charger installed 2012:- Replace VHF, install remote- Replace refrigeration unit- Replace defective Mastervolt battery charger- Replace galley faucet- Install Garman chart plotter- Replace/upgrad all nav lights to LED 2013:- New inflatable tender- Correct leak in galley locker 2014:- Replace bilge pump- Install LED anchor light- Rewire mast- Replace VHF antenna- Replace depth sounder- Replace wind anemometer 2015:- Clean fuel- Install NEXUS wind instrument- Replace all batteries- Repaint waterlines and cove stripe- Re-finish boat name/port on transom- Replace centerboard pennant and sheave- Replace transom backing plate for back stay chain plate and ladder fittings- Lube winches 2016:- Clean fuel tank- Replace fuel fill- Replace potable water pump- Replace Shower Sump Pump- Strip toe rail and refinish- Replace bilge pump- Install ?tween cockpit awning- Refinish wood work in main cabin and v-birth- Replace winter cover- Clean and service sails- Replace hot water heater 2017:- Replace rudder stuffing box- Replace upper life lines 2018:- Remove Lectra-San- Convert forward 55 gal water tank to holding tank - Install black water system y-valve- Install black water pump out line- Install holding tank level monitoring system. 2019:- Install Newmar GI330 galvanic isolator

DISCLAIMER

The Company offers the details of this vessel in good faith but cannot guarantee or warrant the accuracy of this information nor warrant the condition of the vessel. A buyer should instruct his agents, or his surveyors, to investigate such details as the buyer desires validated. This vessel is offered subject to prior sale, price change, or withdrawal without notice.

Exclusions

Owner's personal belongings.

Disclaimer

The Company offers the details of this vessel or yacht in good faith but cannot guarantee or warrant the accuracy of this information nor warrant the condition of the vessel. A buyer should

instruct his representatives, agents, or his surveyors, to investigate such details as the buyer desires validated. This vessel or yacht is offered subject to prior sale, price change, or withdrawal without notice.

PHOTOS

Bristol 35.5 - Extravagance - 1



Bristol 35.5 - Extravagance - 6



Bristol 35.5 - Extravagance - 7



Bristol 35.5 - Extravagance - 8



Bristol 35.5 - Extravagance - 9



Bristol 35.5 - Extravagance - 10



Bristol 35.5 - Extravagance - 11



Bristol 35.5 - Extravagance - 12



Bristol 35.5 - Extravagance - 13



Bristol 35.5 - Extravagance - 14



Bristol 35.5 - Extravagance - 16



Bristol 35.5 - Extravagance - 15



Bristol 35.5 - Extravagance - 18



Bristol 35.5 - Extravagance - 17



Bristol 35.5 - Extravagance - 20



Bristol 35.5 - Extravagance - 19



Bristol 35.5 - Extravagance - 21



Bristol 35.5 - Extravagance - 22



Bristol 35.5 - Extravagance - 23



Bristol 35.5 - Extravagance - 24



Bristol 35.5 - Extravagance - 25



Bristol 35.5 - Extravagance - 26



Bristol 35.5 - Extravagance - 27



Bristol 35.5 - Extravagance - 28



Bristol 35.5 - Extravagance - 29



Bristol 35.5 - Extravagance - 30



Bristol 35.5 - Extravagance - 31



Bristol 35.5 - Extravagance - 32



Bristol 35.5 - Extravagance - 33



Bristol 35.5 - Extravagance - 34



Bristol 35.5 - Extravagance - 35



Bristol 35.5 - Extravagance - 36



Bristol 35.5 - Extravagance - 37



Bristol 35.5 - Extravagance - 38



Bristol 35.5 - Extravagance - 39



Bristol 35.5 - Extravagance - 40



Bristol 35.5 - Extravagance - 41



Bristol 35.5 - Extravagance - 42



Bristol 35.5 - Extravagance - 43



Bristol 35.5 - Extravagance - 44



Bristol 35.5 - Extravagance - 46

Bristol 35.5 - Extravagance - 45



Bristol 35.5 - Extravagance - 47



Bristol 35.5 - Extravagance - 48



Bristol 35.5 - Extravagance - 50

Bristol 35.5 - Extravagance - 49



Bristol 35.5 - Extravagance - 51



Bristol 35.5 - Extravagance - 52



Bristol 35.5 - Extravagance - 53



Bristol 35.5 - Extravagance - 54



Bristol 35.5 - Extravagance - 55



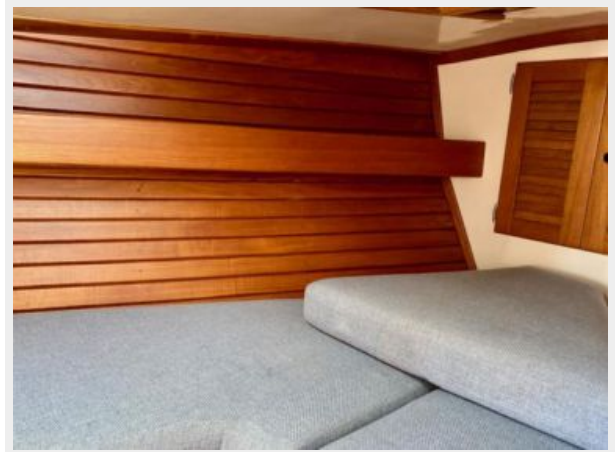
Bristol 35.5 - Extravagance - 56



Bristol 35.5 - Extravagance - 57



Bristol 35.5 - Extravagance - 58



Bristol 35.5 - Extravagance - 59b



Bristol 35.5 - Extravagance - 59a



Bristol 35.5 - Extravagance - 60



Bristol 35.5 - Extravagance - 61



Bristol 35.5 - Extravagance - 62a



Bristol 35.5 - Extravagance - 62b



Bristol 35.5 - Extravagance - 63



Bristol 35.5 - Extravagance - 64



Bristol 35.5 - Extravagance - 66

Bristol 35.5 - Extravagance - 65



Bristol 35.5 - Extravagance - 68a

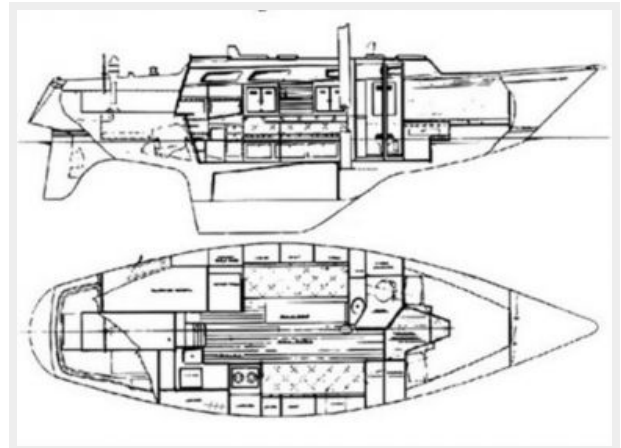
Bristol 35.5 - Extravagance - 67



Bristol 35.5 - Extravagance - 68b



Bristol 35.5 - Extravagance - 68c



Bristol 35.5 - Extravagance - 69



CONTACTS

Andrey Shestakov, leading yacht broker of the sales department of Shestakov Yacht Sales Inc. Shestakov Yacht Sales Inc., the official representative of the Miami/Fort Lauderdale FL headquarters.

Contact details

Email: andrey@shestakovyachtsales.com

Web: shestakovyachtsales.com/en/

Telephones

USA: +1(954)274-4435

Office hours

Monday – Saturday: **9:00 - 21:00** EDT

Sunday: **closed**

Address



Harbour Towne Marina, 850 NE 3rd St,
STE 213, Dania, FL 33004