

## YES TOO — NAUTOR'S SWAN



**Судостроитель:** NAUTOR'S SWAN

**Год постройки:** 2004

**Модель:** Cruising/Racing Sailboat

**Цена:** ЦЕНА ЯХТЫ ПО ЗАПРОСУ

**Местонахождение:** Spain

**Длина общая:** 45' 5" (13.83m)

**Ширина:** 12' 10" (3.91m)

**Мин. осадка:** 9' 3" (2.80m)

Купить YES TOO — NAUTOR'S SWAN а также выбрать подходящую вам яхту из нашего каталога яхт вам поможет опытный яхтенный брокер Андрей Шестаков. На сегодняшний день компания Shestakov Yacht Sales Inc. имеет большое количество яхт в собственном списке продаж, а также тесно сотрудничает со всеми крупными яхтенными производителями по всему миру.

Для того чтобы купить яхту YES TOO — NAUTOR'S SWAN а также проконсультироваться по любому вопросу связанному с покупкой, продажей, чартером яхт позвоните по телефону **+7(918)465-66-44**.

# ОГЛАВЛЕНИЕ

ОГЛАВЛЕНИЕ	2
ХАРАКТЕРИСТИКИ	4
Обзор	4
Основная информация	4
Размеры	4
Скорость, вместимость и масса	4
Размещение	4
Корпус и палуба	5
Информация о двигателе	5
ПОДРОБНОЕ ОПИСАНИЕ	6
Detailed Information	6
SWAN 45-030 YES TOO	13
Исключения	20
Отказ от ответственности	20
ФОТОГРАФИИ	21
NTSwan_191010_MMuina_4439	21
NTSwan_191011_MMuina_4577	21
NTSwan_191011_MMuina_4636	21
NTSwan_191012_MMuina_5826A	21
PHOTO-2019-02-15-17-52-37-1	21
PHOTO-2019-02-15-17-53-38-2	21
PHOTO-2019-02-15-17-53-38-6	22
PHOTO-2019-02-15-17-53-38-1	22
PHOTO-2019-02-15-17-53-38-7	22
PHOTO-2019-02-15-17-53-38-5	22
PHOTO-2019-02-15-17-53-38-4	23
PHOTO-2019-02-15-17-53-38-9	23
PHOTO-2019-02-15-17-53-38-3	23

---

PHOTO-2019-02-15-17-53-38-8	23
КОНТАКТЫ	24
Контактная информация	24
Телефоны	24
Время работы	24
Адрес	24

---

# ХАРАКТЕРИСТИКИ

## Обзор

The Swan 45 is a modern classic and one of the most aesthetically appealing yachts ever conceived. Hugely successful on the international regatta circuit over the past decade, these yachts are more popular than ever and have become the iconic performance cruiser.

Nautor's Swan 45 Yes Too is an excellent example of this hugely successful one design fleet. Since her delivery she has only been used for class racing hence her interior is in immaculate condition.

She still has everything it takes to be competitive in the Swan 45 one-design class and is offered for sale at a very attractive price. The vessel has been completely refitted during summer 2019.

## Основная информация

**Тип судна:** Cruising/Racing Sailboat

**Модельный год:** 2004

**Год постройки:** 2004

**Страна:** Spain

## Размеры

**Длина общая:** 45' 5" (13.83m)

**Длина по ватерлинии:** 0' 0" (0.00m)

**Ширина:** 12' 10" (3.91m)

**Мин. осадка:** 9' 3" (2.80m)

## Скорость, вместимость и масса

**Водоизмещение:** 21715.532807 Pounds **Вместимость воды:** 84.53505664 Gallons

**Объем топливного бака:** 39.6258078  
Gallons

## Размещение

**Всего кают:** 2

## Корпус и палуба

---

**Материал корпуса:** GRP

**Цвет корпуса:** White with Blue stripes

**Дизайнер корпуса:** Germán Frers

**Дизайнер экстерьера:** Frers Naval  
Architecture

**Дизайнер интерьера:** Frers Naval  
Architecture

## Информация о двигателе

---

**Двигатели:** 1

**Производитель:** Volvo Penta

**Модель:** D2-22 marine Diesel 39 kW

**Тип двигателя:** Inboard

**Тип топлива:** Diesel

---

# ПОДРОБНОЕ ОПИСАНИЕ

---

## Detailed Information

---

The Swan 45 is a modern classic and one of the most aesthetically appealing yachts ever conceived. Hugely successful on the international regatta circuit over the past decade, these yachts are more popular than ever and have become the iconic performance cruiser.

Nautor's Swan 45 EALA of RHU is an excellent example of this hugely successful one design fleet, built as a Two Cabin version with twin heads and a large sail locker accessed from the cockpit.

Since her delivery she has only been used for class racing hence her interior is in excellent condition.

Eala of Rhu has been professionally maintained by a full-time skipper.

She has benefited from significant upgrades and continuous maintenance. She is fully optimised for Swan Class racing and can be quickly converted into full IRC mode, in which she has won several coveted prizes.

In her current ownership she has had the hull, keel and rudder filled and faired utilising Swan Class templates, the anti-foul has been sprayed to a fine racing finish, the rudder bearings have been upgraded also giving a superior feel to the helm. The Rod rigging has been professionally inspected and replaced as necessary and all mast boom and spars repainted regularly. Batteries, charging and shore power have all been upgraded to allow for offshore events, and an inverter system is installed to power the navigation and raceware IT systems.

The twin groove race forestay foil can be swiftly and easily switched to the roller furling foil for delivery and cruising. Eala of Rhu also benefits from a triple reef main for short-handed sailing and delivery trips.

She still has everything it takes to be competitive in the Swan 45 one-design class and IRC / ORC Classes and is offered for sale at a very attractive price.

A steel shipping container is available (Lying Scotland) fully fitted with power lighting and racking for sail and spares storage to one side and a workbench to the opposite.

## HULL & APPENDAGES

## Hull Construction

Glass/ vinylester laminate with carbon reinforcement in selected area. Sandwich topside and single skin bottom fiber reinforcement are multiaxial or unidirectional. Structural bulkheads are of veneered sandwich construction or marine grade waterproof plywood. Bottom stiffeners are reinforced with unidirectional carbon and multiaxial glass fibre in selected areas.

## GRP engine beds

Durepox bottom treatment fully faired. Composite mast step with movable shoe.

## Keel

Antimony alloyed lead bulb and fin with upper flange recessed into hull. Fin bolted to hull with high tensile steel bolts. Deep floors inside, possibility for 400 Kg keel weight adjustment by removable lead pigs about 50 Kg each inside bulb.

Foam filled rudder with carbon/epoxy stock.

## DECK

Advanced laminate sandwich deck with Sprint prepeg skins and low density closed cell foam core. Teak in cockpit and side decks, 30 mm high toe rails forward of mast Custom jib lead line inlets in cockpit Carbon steering wheel.

Main companionway sliding hatch garage flush with coach roof and Esthec details. 4 pcs footsteps in cockpit stainless steel pushpit, pulpit and stanchions with 600 mm high life lines Composite mast collar. Grab rails each side of companionway

## Deck Equipment

B&G Hydra to a full B&G Hercules system Portable on deck screen running Deckman for Windows

Compass D- 135, mounted on steering pedestal

B&G navigation instruments, Halycon Gyro Stabilised Compass, Full Race / Performance package with upgraded H3000 processor 4 x 20/20's on mast 2 FFD's in Cockpit and 1 at chart table. 2 Analog wind displays.

Autopilot, B&G Hydra 240-PK-ACP-2 with hydraulic pump PMP-T2-12V and Hynautic K2B cylinder.

VHF Shipmate RS8400 GPS

Computer

Radio/CD-player Sony XR C5200R with two loudspeakers Poly-Planer 905 in saloon. Loudspeakers in cockpit, Sony XS-MP-61 with transfer switch.

Folding eyes for harness attachment in cockpit Pad eyes for safety lines, Wichard 6504, 3 pcs Pad eye for outboard sheeting,

Wichard 6505 Harken aluminum jib and main sheet tracks Two separate lockers to be mounted in cockpit for cruising. Harken blocks

Spinlock jammers (partly upgraded (2016))

Anchor windlass Ocean 1 Gypsy only, 12V

Original sprayhood and Bimini

## **Winches**

Lewmar Grand prix winch option instead of standard:

Primary winch Lewmar 60/3 AOR Halyard B 48.3 Halyard winch Lewmar 48 STOR-SR

## **INTERIOR**

### **General**

Two cabin version galley to port, navigation station to starboard. She has twin heads, one forward and the other behind the navigation station. A generous salon with center table. Engine centerline under the stairs. A large sail locker accessed from the cockpit.

### **Master Cabin (Aft)**

Double berth with stowage under Hanging locker and seat Overhead Lockers

Seat in front of forward bulkhead.



## Heads

Port Fwd & Stbd Aft ; White GRP interior module to half height with wash basin Fresh water tap, shower, mirror and waste container.

## Galley

Gimballed two burner stove with oven, protected by stainless steel guard

Stainless steel double sinks with fresh water tap, Corian Cameo white counter tops and sink cover

Drawers and lockers . Front loading refrigerator 70 lt. Top Loading Freezer, Garbage bin under the sink.

## Main Cabin

Folding leaf table. Locker outboard

Settee backrests Port & Starboard that fold up and convert into 2 x Pullman berth.

## Nav Station

Forward facing chart table with seat and Chart stowage under the table top Electronics recessed in the panel above Chest of drawers.

## Guest Cabins

Double berth with stowage under the berth Hanging lockers to port.

## ENGINE & SYSTEMS

### Plumbing Systems

Fresh water 330 li in polythene tank consisting of three interconnected compartments.

Johnson pump aqua jet water pressure system. Pressurized hot and cold water with a backup foot pump for fresh water, single lever mixing faucets.

Sea-water spout with foot pump in galley, Y-valve in forward head.

Drinking water purifier

Polythene holding tank 60 li with level indication for forward toilet. Manual toilet discharging to holding

tank.

Tank emptied by hand pump or deck suction Bilge pumps, two manual and one electric.

Isotemp water heater 22 li Isotherm Compact magnum Whale Gusher pump 10 MK3 pump

Whale Gulper 220 Shower/Galley Waste and bilge pump Whale Gusher bilge pump

Jabsco model 36740- series

Level indicators for fuel and water tanks

Composite sea cocks for all through hull fitting below waterline. Sea water for toilet flushing.

Engine space air inlet from deck, outlet with blower to transom

### **Drainage System**

Whale Gulper 220 Shower/Galley Waste and bilge pump Whale Gusher bilge pump

Jabsco model 36740- series

The holding tank is emptied by hand pump or deck suction.

Bilge pumps, two manual and one electric.

Cockpit scupper drains.

### **ELECTRICAL SYSTEM**

#### **DC System**

12 DC insulated return system for lighting and general service Main switchboard 12 V DC outboard of chart table.

Victron 3500 inverter/charger

Battery capacity 240 Ah (new batteries 2016) Bottom of mast, shroud and stay grounded to keel

Flexible chart light and red night light at navigation station

Red/green navigation light on pulpit White stern light on push pit

#### **AC System**

Shore power inlet 220 V

## Chargers/Inverters

Battery charger mass 12/80

Victron 3500 inverter/charger

## ELECTRONIC SYSTEMS

### Navigation Instruments

B&G navigation instruments, Halycon Gyro Stabilised Compass Full Race / Performance package with upgraded H3000 processor 4 x 20/20's on mast 2 FFD's in Cockpit and 1 at chart table. 2 Analog wind displays. Autopilot, B&G Hydra 240-PK-ACP-2 with hydraulic pump PMP-T2-12V and Hynautic K2B cylinder.

### Communications Systems

VHF Shipmate RS8400 GPS

Computer

### Entertainment Systems

Radio/CD-player Sony XR C5200R with two loudspeakers Poly-Planer 905 in saloon. Loudspeakers in cockpit, Sony XS-MP-61 with transfer switch.

## MAST & RIGGING

Hall Spars Carbon fibre double spreader 15/16 fractional rig, spreaders swept aft 20° degrees

Navtec discontinuous rod rigging

Hall Spars Carbon fibre main boom

Swan Club Class Carbon fibre spinnaker pole

IRC Carbon fibre spinnaker pole,

Antal track and tackle on mast including:

- 2 Spi aft guys, Spectra 12mm
- 2 Spi sheet tweakers, Spectra 8mm
- 1 Fore guy, double ended, Spectra 10mm

Hydraulic backstay adjustment, with Navtec control panel each side in cockpit.

Backstay pumps – upgraded to two speed operations, to pump the backstay down faster.

Mechanical vang

Removable hydraulic mast jack

Forestay with Tuff luff 2nd forestay with furler Navtec system 50

All Sheets for RACING and cruising

## EQUIPMENT

### **General Equipment**

Swim ladder

Anchor and chain

Cockpit shower

Cockpit speakers

### **Safety Equipment**

Epirb

Liferaft

Fire extinguishers

## SAILS

Mainsail Membrane Class 2016 – 1 regatta

Mainsail Membrane IRC 2016

J1 Membrane Class 2016 - 1 regatta

J2 Membrane Class 2016 - 1 regatta

S2 Class 2016 - 1 regatta

J3.5 Membrane Class 2015

A1 Class 2015

A0 IRC masthead - 2015

J3 Membrane Class - 2015

J2 Membrane Class - 2015

J1 Membrane Class - 2015

A1.5 masthead IRC – 2015

S2 masthead IRC – 2015

There is also a delivery mainsail (reduced down to 70% for ease of handling and de-powering short-handed) and a roller headsail.

**Price may be changed without notice**

**Boat is offered subject to still being available**

**The particulars are believed to be correct but not guaranteed.**

## **SWAN 45-030 YES TOO**

---

The Swan 45 is a modern classic and one of the most aesthetically appealing yachts ever conceived. Hugely successful on the international regatta circuit over the past decade, these yachts are more popular than ever and have become the iconic performance cruiser.

Nautor's Swan 45 Yes Too is an excellent example of this hugely successful one design fleet. Since her delivery she has only been used for class racing hence her interior is in immaculate condition.

She still has everything it takes to be competitive in the Swan 45 one-design class and is offered for sale at a very attractive price. The vessel has been completely refitted during summer 2019.

### **HULL**

Glass/ vinylester laminate with carbon reinforcement in selected area. Sandwich topside and single

skin bottom fiber reinforcement are multiaxial or unidirectional. Structural bulkhead are of veneered sandwich construction or marine grade waterproof plywood. Bottom stiffeners reinforced with unidirectional carbon and multiaxial glass fibre in selected areas.

GRP engine beds.

Durepox bottom treatment and faired (2016) Composite mast step with movable shoe.

## KEEL

Antimony alloyed lead bulb and fin with upper flange recessed into hull. Fin bolted to hull with high tensile steel bolts. Deep floors inside, possibility for 400 Kg keel weight adjustment by removable lead pigs about 50 Kg each inside bulb.

Foam filled rudder with carbon/epoxy stock.

## DECK

Advanced laminate sandwich deck with Sprint prepeg skins and low density closed cell foam core. Painted white

Teak in cockpit and side decks

30 mm high toe rails forward of mast Custom jib lead line inlets in cockpit Carbon steering wheel

Main companionway sliding hatch garage flush with coach roof and Esthec details. 4 pcs footsteps in cockpit

Cruising pedestal bracket with 7in Chart Plotter

Stainless steel pushpit, pulpit and stanchions with matt finish 600 mm high lifelines

Composite mast collar

Grab rails each side of companionway Headstay attachment on stemhead

Folding eyes for harness attachment in cockpit Pad eyes for safety lines, Wichard 6504, 3 pcs Pad eye for outboard sheeting, Wichard 6505 Harken aluminum jib and main sheet tracks

Two separate lockers to be mounted in cockpit for cruising. Harken blocks

Spinlock jammers (partly upgraded (2016))

## WINCHES

Winches are Harken Primary sheet B55/3 STR Halyard B 48.3 Mainsheet B53.3

## INTERIOR – 2 CABINS

Visible saloon interior is varnished teak with hand rubbed satin finish. Floorboards of sandwich construction laid with teak and holly veneer. Lightweight overhead lining foam mattresses over Scandi-flex battens for racing.

## OWNER CABIN

Double berth with stowage under Hanging locker and seat

Seat in front of forward bulkhead

## HEAD

White GRP interior module to half height with wash basin Fresh water tap, shower, mirror and waste container

## GALLEY

Gimballed two burner stove with oven, protected by stainless steel guard

Stainless steel double sinks with fresh water tap, Corian Cameo white counter tops and sink cover  
Drawers and lockers . Front loading refrigerator 70 lt.

Garbage bin

## MAIN CABIN

Folding leaf table. Locker outboard

Settee backrests fold up and convert into Pullman berth. Tanks below settees.

## NAVIGATION STATION

Forward facing chart table with seat

Chart stowage under table top Electronics recessed in panel above Chest of drawers

## AFT CABINS

Double berths Stowage under berths Hanging lockers

## ENGINE

Volvo Penta D2-22 marine diesel 39 Kw, 53 Hp, 3000 RPM. Engine control panel in cockpit

Sail drive and 2-blade racing folding propeller 150 lt fuel in one tank of aluminium

Fire-extinguisher under the steps entrance

## PLUMBING SYSTEM

Composite sea cocks for all through hull fitting below waterline Sea water for toilet flushing

Fresh water 320 lt in polythene tank consisting of three interconnected compartments Drinking water purifier

Sea-water spout with foot pump in galley Drainage system, Y-valve in forward head

Pressurized hot and cold water, backup foot pump for fresh water Oras single lever mixing faucets

Polythene holding tank 60 lt with level indication for forward toilet. Manual toilet discharging to holding tank. Tank emptied by hand pump or deck suction

Bilge pumps, two manual and one electric Isotemp water heater 22 lt

Isotherm , Compact magnum. Whale Gusper pump 10 MK3 pump

Whale Gulper 220 Shower/Galley Waste and bilge pump Whale Gusper Urchin bilge pump

Jabsco model 36740- series

Johnson pump aqua jet water pressure system Jabsco, vented lups

Jabsco Y-valve



Level indicators for fuel and water tanks

Engine space air inlet from deck, outlet with blower to transom

## ELECTRICAL SYSTEM

Victron 3500 inverter/charger

12 DC insulated return system for lighting and general service Main switchboard 12 V DC outboard of chart table

Battery capacity 240 Ah (new batteries 2016) Bottom of mast, shroud and stay grounded to keel

Flexible chart light and red night light at navigation station Shore power inlet 220 V

Red/green navigation lopolight on pulpit White stern lopolight on push pit Battery charger mass 12/80

## INSTRUMENTS

compass D- 135, mounted on steering pedestal

B&G navigation instruments, Halycon Gyro Stabilised Compass Full Race/Performance package with upgraded H3000 processor 4 x 20/20's on mast

2 FFD's in Cockpit and 1 at chart table 2 Analog wind displays

B&G Autopilot VHF

GPS

Computer

Apline sound system

## RIGGING

Hall Spars Carbon fibre double spreader 15/16 fractional rig, swept 20 degrees Hall Spars Carbon fibre main boom

Hall Spars 2x Carbon fibre spinnaker pole Mast, boom and spinnaker pole painted 2016 Navtec rod rigging with discontinuous shrouds Mechanical vang

Hydraulic backstay adjustment, with control panel each side in cockpit Hydraulic outhaul adjuster in

---

boom, with control panel each side in cockpit Removable hydraulic mast jack

Forestay with Tuff luff 2<sup>nd</sup> forestay with furler Navtec system 50

REFIT 2019

-Flexitec New

Winches full revision and service

Mast and boom painted

Hull polish

Hull new speedy carbon

Rudder and keel profiled

New seacocks

Engine overhaul 2 years warranty

Sail drive joint new

Racing propeller new

new upholstery

new lines (ropes)

extra backup lines

Electrónica B&g hidra 2000 processor upgrade , Wi-Fi , 5 jumbos, plotter etc , revised and upgraded

Autopilot B&g

Vhf simrad 2019 c distress

Rádio Epirb 2019

Fridge engine revised

New gel batteries

- Electric installation revised

Instalation of black waters

Water heater

Battery charger

Mastjack revised and serviced

Security orc 3

2 liferaft revised

Rudder wheel in carbon

Winch anchor

Harken Genoa furler revised

Sprayhood new

Main cover new

Sail wardrobe 2017 (Nations trophy 2019 raced only)

Main 3fl

J1 3fl

J2. 3fl

1. J3. 3fl

A1,5 north

S2 north

A3 (2017)

S4 ( 2015)

Main 2015

J1 2015

J2 2015

J3 2015

A1,5

S2

Main quantum delivery

J delivery

Staysail

---

Storm Sail

## Исключения

---

При продаже яхты исключаются личные вещи владельца.

## Отказ от ответственности

---

Компания предоставляет описание судна или яхты добросовестно, но не может гарантировать точность этой информации, а также не ручается за техническое состояние. Покупатель должен проинструктировать своих агентов или оценщиков исследовать представленную информацию более подробно, по собственному желанию. Продажа судна или яхты, изменение цены или снятие с продажи будет происходить без предварительного уведомления.

# ФОТОГРАФИИ

NTSwan\_191010\_MMuina\_4439



NTSwan\_191011\_MMuina\_4577



NTSwan\_191011\_MMuina\_4636



NTSwan\_191012\_MMuina\_5826A



PHOTO-2019-02-15-17-52-37-1



PHOTO-2019-02-15-17-53-38-2



PHOTO-2019-02-15-17-53-38-6



PHOTO-2019-02-15-17-53-38-1



PHOTO-2019-02-15-17-53-38-7



PHOTO-2019-02-15-17-53-38-5



PHOTO-2019-02-15-17-53-38-4



PHOTO-2019-02-15-17-53-38-9

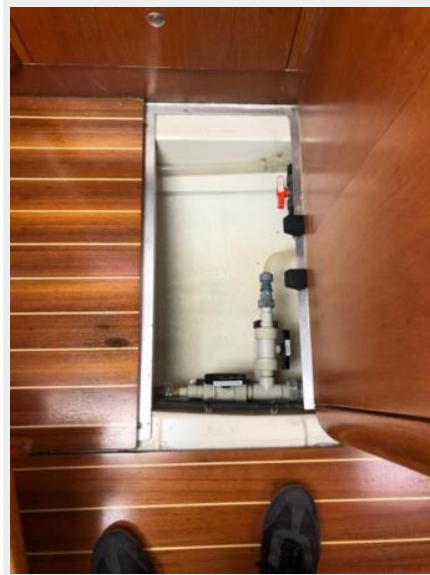


PHOTO-2019-02-15-17-53-38-3



PHOTO-2019-02-15-17-53-38-8



# КОНТАКТЫ

---

Андрей Шестаков (Andrey Shestakov) – ведущий яхтенный брокер отдела продаж яхт и судов компании Shestakov Yacht Sales Inc. Официальный представитель Shestakov Yacht Sales Inc. для русскоговорящих клиентов в центральном офисе компании в Майами/Форт Лодердейл/Флорида/США.

## Контактная информация

---

Email:  
[andrey@shestakovyachtsales.com](mailto:andrey@shestakovyachtsales.com)

Web: [shestakovyachtsales.com](http://shestakovyachtsales.com)

## Телефоны

---

Краснодарский край: **+7(918)465-66-44**

США, Майами, Флорида: **+1(954)274-4435**

## Время работы

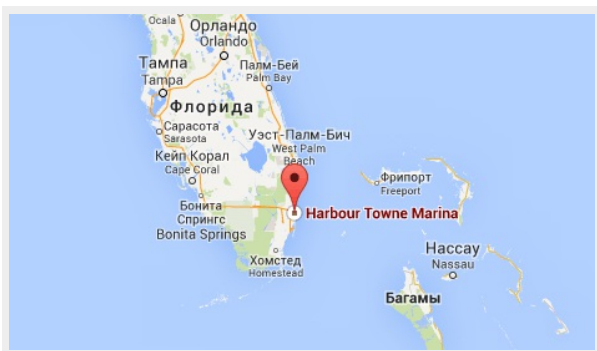
---

Понедельник – Суббота: **9:00 - 21:00**  
EDT

Воскресенье: **Закрито**

## Адрес

---



Harbour Towne Marina, 850 NE 3rd St,  
STE 213, Dania, FL 33004