

## INFINITA — NAUTOR'S SWAN



**Судостроитель:** NAUTOR'S SWAN

**Год постройки:** 1981

**Модель:** Cruising/Racing Sailboat

**Цена:** **ЦЕНА ЯХТЫ ПО ЗАПРОСУ**

**Местонахождение:** Netherlands

**Длина общая:** 51' 3" (15.62m)

**Ширина:** 14' 9" (4.49m)

**Мин. осадка:** 0' 0" (0.00m)

**Макс. осадка:** 8' 11" (2.70m)

Купить **INFINITA — NAUTOR'S SWAN** а также выбрать подходящую вам яхту из нашего каталога яхт вам поможет опытный яхтенный брокер Андрей Шестаков. На сегодняшний день компания **Shestakov Yacht Sales Inc.** имеет большое количество яхт в собственном списке продаж, а также тесно сотрудничает со всеми крупными яхтенными производителями по всему миру.

Для того чтобы купить яхту **INFINITA — NAUTOR'S SWAN** а также проконсультироваться по любому вопросу связанному с покупкой, продажей, чартером яхт позвоните по телефону **+7(918)465-66-44**.

# ОГЛАВЛЕНИЕ

ОГЛАВЛЕНИЕ	2
ХАРАКТЕРИСТИКИ	5
Основная информация	5
Размеры	5
Скорость, вместимость и масса	5
Размещение	5
Корпус и палуба	5
Информация о двигателе	6
ПОДРОБНОЕ ОПИСАНИЕ	7
Detailed Information	7
SWAN 51-005 INFINITA	16
Исключения	22
Отказ от ответственности	23
ФОТОГРАФИИ	24
DSC_0447	24
DSC_0433	24
DSC_0449	24
DSC_0453	24
DSC_0458	24
DSC_0468	24
DSC_0471	25
DSC_0473	25
DSC_0475	25
DSC_0477	25
DSC_0481	25
DSC_0479	25
DSC_0483	26
DSC_0485	26

IMG_9036	26
IMG_9038	26
IMG_9039	26
IMG_9041	26
IMG_9042	27
IMG_9046	27
IMG_9047	27
IMG_9048	27
IMG_9049	28
IMG_9050	28
IMG_9051	28
IMG_9052	28
IMG_9053	29
IMG_9054	29
IMG_9055	29
IMG_9056	29
IMG_9057	30
IMG_9058	30
IMG_9061	30
IMG_9062	30
IMG_9063	30
IMG_9065	30
IMG_9066	31
IMG_9067	31
IMG_9069	31
IMG_9070	31
IMG_9071	31
IMG_9072	31
IMG_9073	32

---

IMG_9726	32
IMG_9727	32
IMG_9728	32
IMG_9729	32
IMG_9730	32
IMG_9731	33
IMG_9732	33
IMG_9733	33
IMG_9734	33
IMG_9735	33
КОНТАКТЫ	34
Контактная информация	34
Телефоны	34
Время работы	34
Адрес	34

# ХАРАКТЕРИСТИКИ

## Основная информация

Тип судна: Cruising/Racing Sailboat	Модельный год: 1981
Год постройки: 1981	Страна: Netherlands

## Размеры

Длина общая: 51' 3" (15.62m)	Длина по ватерлинии: 0' 0" (0.00m)
Ширина: 14' 9" (4.49m)	Мин. осадка: 0' 0" (0.00m)
Макс. осадка: 8' 11" (2.70m)	

## Скорость, вместимость и масса

Водоизмещение: 41887.82978 Pounds	Вместимость воды: 184.9204364 Gallons
Объем топливного бака: 68.68473352 Gallons	

## Размещение

Всего кают: 3

## Корпус и палуба

Материал корпуса: GRP	Материал палубы: Teak
Цвет корпуса: WHITE	Дизайнер корпуса: Germán Frers
Дизайнер экстерьера: FRERS NAVAL ARCHITECTURE	Дизайнер интерьера: FRERS NAVAL ARCHITECTURE

## Информация о двигателе

---

**Двигатели:** 1

**Производитель:** Perkins

**Модель:** 4.236

**Тип двигателя:** Inboard

**Тип топлива:** Diesel

---

# ПОДРОБНОЕ ОПИСАНИЕ

---

## Detailed Information

---

### HULL & APPENDAGES

The hull is of single skin construction using glass/aramid hybrid fibre reinforced polyester laminate. Structural bulkheads are of marine grade water-proof plywood laminated to hull and deck with foam strips between. Engine bed in GRP.

Colour: Paint 2010 Dark Blue

Cove and coaming stripes: red pain 2010

The central part of the seat and upper part of transom are integrated to form a bathing platform when folded out. Swim ladder permanently attached to platform.

The keel is lead casting with antimony. Cast-in keel bolts are of high-tensile stainless steel.

### Steering System

The rudder is in sandwich GRP

Destroyer type steering wheel in Stainless steel

### DECK

Deck is constructed in GRP sandwich

Finished in white gelcoat where visible

Double dark blue coaming stripes

Anodised aluminium toerail

9mm teak laid deck

Stemhead fitting of stainless steel with 2 chain rollers

Opening in pushpit

Gates in lifelines, both sides

Auxiliary engine support on pushpit

Hot and cold water deck shower

## **Deck Equipment**

Chain: m 60 Lewmar 10 mm, grade 40

Electric windlass del 2017 Lewmar Concept 2 with control in cockpit

CQR anchor 75lb

## **Winches**

Lewmar (A = Aluminium– S = Self-Tailing – E = Electric)

2x 64 AEST (Primary)

1x 48 AEST (Main sheet)

2x 48 AST (Secondary)

2x 40 AST (Traveller)

1x 46 AEST (Stbd Pit)

1x 46 AST (Port Pit)

## **Sailing Hardware**

Harken Deck Hardware Spinlock jammers



## INTERIOR

### General

Teak with hand rubbed satin finish is used for all visible woodwork Roller blinds/mosquito screens for hinged deck hatches from 0.5 m width upwards Drawers are secured with latches Wooden companionway ladders with non-slip steps

### Foward Cabin (Port)

Upper and lower berths and hanging lockers forward Lockers outboard of upper berth 2 Drawers under lower berths Small shelves by the head of each berth

### Forward Cabin (Starboard)

Upper and lower berths and hanging lockers forward Pull out lower berth and wider than standard upper berth Lockers outboard of upper berth 2 Drawers under lower berths Small shelves by the head of each berth

### Forward Head

PAR large bowl WC

Lockers, Mirror, telephone type shower and bulkhead mounted shower head Back-up foot pump for washbasins in both heads Shower and washbasin sump tanks emptied by electric pump White GRP module up to ceiling Inox holding tank for WC with electric pump and deck suction Shower Curtain

### Aft Cabin

Double central berth, drawers under both berths GRP cockpit linings, finished in a light colour with textured surface Vanity Desk Shelf with lockers over each side, full-length hanging locker Chart stowage in aft cabin

### Aft Head

PAR large bowl WC

Lockers, Mirror, telephone type shower and bulkhead mounted shower head

Back-up foot pump for washbasins in both heads

Shower and washbasin sump tanks emptied by electric pump

White GRP module up to ceiling

Inox holding tank for WC with electric pump and deck suction

## Saloon

Teak table with door below for bottles

“L” shaped settee portside with 2 chairs on centerline

Settee to starboard

Lockers and bookshelf to starboard above settee

Teak cover on mast in saloon

## Galley

Stainless steel ,Alpex inox gas stove with oven and grill,

Extractor hood over stove

Drawers for utensils

GRP Garbage bin

Iceberg fridge and freezer run on engine and 230V Compressore del 2017

Work area each side of stove in Corian Cameo White. Double stainless steel sinks

Sea water spout with foot pump

Drip dry locker

## Nav Station

Chart stowage AFT cabin

Double navigator's seat

Drawers under the table

## ENGINE & SYSTEMS

Volvo TMD22, 4500 rpm - 78 hp

Max Prop 3 blade propeller adjustable in the water

Bow thruster Max Prop new engine 2017

Total fuel capacity lt. 410 in 3 inox tanks 110+210+90

Fuel tank level indicators

## Plumbing Systems

Hot and Cold pressurized water

Total water capacity lt. 430 in 2 inox tanks 170 l 2 destra 1 sx 260

Water tank level indicator

Fridge and freezer run on engine and 230 V

Air conditioning

## Ventilation System

Eberspächer D5 W heating

## DrainageSystem

2 Manual bilge pumps

Johnson L220024 V electric bilge pump, manual and automatic control

---

## ELECTRICAL SYSTEM

### DC System

Service batteries n.12 batterie da 2,2V = 26,4 560 Ah 2012 sono al 60%

Engine starter batteries 12 V 100 Ah new 2017

Forepeak locker light

Wind direction light at masthead

Fluorescent light in engine area

Anchor light at masthead + strobe light

### AC System

Shore power connection 230 V, 25 A/15 A, outlets 230 V

### Chargers/Inverters

Alternator on engine 100 A 28 V

Mass 24/75 A battery charger servizi

Battery charge for the start engine battery gel

## ELECTRONIC SYSTEMS

### Navigation Instruments

Navigation instruments: Brookes & Gatehouse Hydra 2000

Anemometer, speed and mile counters, depth sounder

Halcyon compass

Repeaters:

1 x 360°

1 x 45°

2 x FFD over aft entrance

1 x NMEAFFD at chart table

2 x 20/20 on mast

1 x acoustic alarm at chart table

Suunto compass

n. 2 GPS

n. 2 Plotter Ray Marine separatamente 1 carteggio I dal timone

Radar with antenna on mast

SSB

### **Autopilot Systems**

Autohelm ST-7000 hydraulic automatic pilot

### **Communications Systems**

VHF Shipmate at chart table with handset in cockpit

### **Entertainment Systems**

Radio Sony

TV

loudspeakers in cockpit, and in Saloon

### **MAST & RIGGING**

Mast surveyed 2016

Furling Boom

IG = mt 19,80 – Triple spreader aluminium mast.

Spinnaker pole

Jockey pole

Bowsprit for Gennaker

Genoa Harken furler

Navtec hydraulic system, with 1 repeater, for: backstay and boom vang, stay sail

Digitale angolo boma sull'albero

## EQUIPMENT

### **General Equipment**

Sprayhood over entrance hatch – Sprayhood over aft cockpit 2015

Cockpit table

Carbon fibre gangway

Sun awning

Tender new 2017

### **Safety Equipment**

Life raft

Flares

Automatic fire extinguisher in engine area, with remote control

Epirb

## SAILS

Sail	Year	Sailmaker	Material/Notes
------	------	-----------	----------------

### MAINSAILS

Mainsail	2016	North Sails	Dacron
----------	------	-------------	--------

### UPWIND

Furling Genoa	Zaoli	Dacron
---------------	-------	--------

Staysail furling 2017 North Sails Never used

### DOWNWIND

Gennaker	North Sails	With Sock (never used)
----------	-------------	------------------------

**Price may be changed without notice**

**Boat is offered subject to still being available**

**The particulars are believed to be correct but not guaranteed**

---

## **SWAN 51-005 INFINITA**

---

### **HULL**

Hull constructed of GRP

Structural bulkheads of marine plywood laminated to hull and deck

Steel keel frame with bolt through keel bolts

Hull colour: White (2012)

Hull stripes: dark blue (2012)

Coaming stripe: dark blue (2012)

Bottom treated with epoxy primer and antifouling

Swimming ladder on transom

### **DECK**

Teak on side decks, cockpit , bridge deck and coach roof, renovated by Nautor's Swan service yard (2018)

White polyurethane paint on deck surfaces with dark blue coaming stripe

Alloy toe rail

Mast stepped through deck

Steering wheel with leather cover

Plastimo compass on pedestal

Pulpit, pushpit and lifeline stanchions of stainless steel

Stainless life lines with gate on each side



Socket for flagpole on deck

Alloy mooring cleats

Anchor roller on stemhead

Rocna anchor 20 kg

Fittings spinnaker poles

Hot and cold deck shower

Cockpit table, removable

Spinlock jammers

Lewmar genoa tracks 2 pair each side with plunger sliding cars

Lewmar staysail tracks with plungers slider cars

Lewmar mainsheet track with traveler tackles

Stainless steel airvents (4) on dorade boxes with stainless steel protection bars

Moonlight polished deckhatches

Plexiglass curved flush mounted deckhatch for saillocker

Lewmar standup halyard blocks

Navtec hydraulic backstay tensioner

Cockpit speakers

VHF speaker in cockpit

SB cockpit locker dedicated for liferaft

Helmsman seat aft with lockers

2 line lockers in cockpit coaming with lid

Engine control panel with rpm , temperature and oil pressure gauge

Shore power connection, stainless steel

Manual bilge pump

Navtec hydraulic panel with 4 valves for backstay, vang, outhaul and cutterstay operated with separately mounted manual pump

Deck prism in aft cockpit and bridge deck

Radar antenna post mounted port aft (Radar, gps, navtex)

Furuno autopilot display

B&G analogue displays in aft cockpit : depth , wind speed, wind direction, boat speed, close hauled wind direction.

Sprayhood with stainless steel frame

## WINCHES

2 x Lewmar 66 ECST ? speed, primary (electric, revised and new engines 2012)

2 x Bariant 28 CST ? speed, secondary (revised and re-chromed 2012)

2 x Bariant 27 CST ? speed, mainsheet (revised and re-chromed 2012)

4 x Bariant 27 CST reef, halyard (revised and re-chromed 2012)

1 x Lewmar 52 ECST, halyard (electric, revised and new engines 2012) Electric anchor windlass, Maxell Nillson with capstan, (revised and re-chromed 2012)

## INTERIOR

Teak veneer and teak trim for all interior

Topsides in lined with teak battens in cabins

Teak floorboards

Dark grey canvas upholstery

Blinds and mosquito screens for hatches

Interior layout going front to aft:

Sail locker with curved Plexiglass deck hatch,

Port side fwd guest cabin with Pullman,

SB side fwd guest cabin with Pullman and direct access to fwd head

Fwd head with washbasin and shower

Saloon with U-shaped sofa at starboard and club seats on starboard, saloon table with folding leaves

U-shaped galley with Corian countertop

Navigation station with storage for charts and instruments panel

Engine room

Owners cabin aft with large double bed on port and single bed on SB

Head with manual toilet , washbasin and shower

### **GALLEY equipment**

Double stainless steel sinks

Four-burner gimballed gas stove with oven, Alpes INox

Top and front loading refrigerator

Top loading freezer

Sharp stainless steel microwave oven

Electric gas switch

Electric extractor with light

### **NAV station equipment**

B & G radar 3G (2018)

Computer with nav software and radar overlay (2018)

Neovo flatscreen monitor

Furuno GP32 gps

Furuno NX300 Navtex

Garmin VHF

Icom handheld VHF

B&G Hornet 4 log, speed and wind display

B&G Hecta depth display

DC (24V) panel with Voltage and Amp monitor

AC (230V) panel with Voltage monitor

## **ENTERTAINMENT**

Pioneer stereo with Bluetooth and USB connection

Speakers in saloon, owners cabin and aft cockpit

## **ENGINE**

Perkins typ 4.236 73 hp 3000 rpm with fixed shaft

Engine space sound insulated

Autoprop 3-blade feathering propeller

Fuel capacity 260 lt in stainless steel tanks

## **PLUMBING AND VENTILATION SYSTEM**

Seacocks

Water capacity 700 lt in stainless steel tanks vented to galley sinks

Pressurized hot and cold water

Water heated via engine cooling or AC element

Boiler 50 lt capacity

Greywater sump tanks

Manual pumps for sump tanks

Holding tanks

Bilge pump

12V air vents in saloon and cabins

Marine Air aircondition system with van coils in saloon and owners cabin

## **ELECTRICAL SYSTEM**

24 V DC system

230 V AC system run on shore power

230 V 50A shore power inlet

Floodlight on mast

Boom light

Victron battery charger 24V 80A and inverter (2018)

## **RIGGING**

Sloop rig

Aluminum three-spreader mast , white painted

Rod Rigging

Sleden Furlex headstay furler

Harken furler on cutter stay

Haken mainsailtrack with ballsliders

Lazy jacks

Carbon Spinnaker pole

Jockey pole (?)

Navtec boom vang

Navtec backstay

Navtec outhaul

Navtec cutterstay

## GENERAL EQUIPMENT

Cockpit cushions

Carbon flagpole

## SAFETY EQUIPMENT

fire extinguishers

Man overboard recovery system

Emergency tiller in lazarette

Horse shoe buoy

## SAILS

Mainsail Hagoort (2007)

Genoa furling Hagoort (2007)

Gennaker (2007)

Storm jib

Trysail

Mainsailcover

Genoa cover

---

## Исключения

При продаже яхты исключаются личные вещи владельца.

---

## Отказ от ответственности

---

Компания предоставляет описание судна или яхты добросовестно, но не может гарантировать точность этой информации, а также не ручается за техническое состояние. Покупатель должен проинструктировать своих агентов или оценщиков исследовать представленную информацию более подробно, по собственному желанию. Продажа судна или яхты, изменение цены или снятие с продажи будет происходить без предварительного уведомления.

# ФОТОГРАФИИ

DSC\_0447



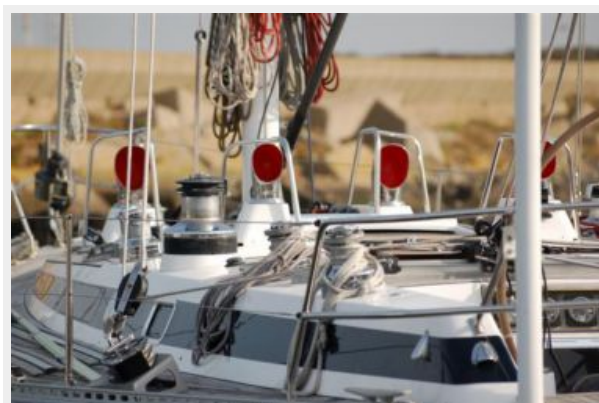
DSC\_0433



DSC\_0449



DSC\_0453



DSC\_0458



DSC\_0468





DSC\_0471



DSC\_0473



DSC\_0475



DSC\_0477



DSC\_0479



DSC\_0481



DSC\_0483



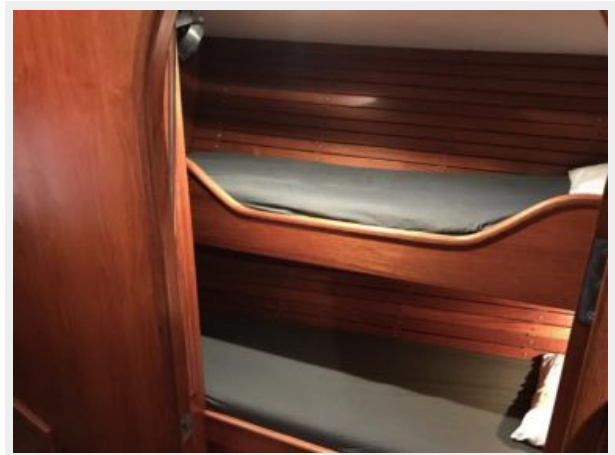
DSC\_0485



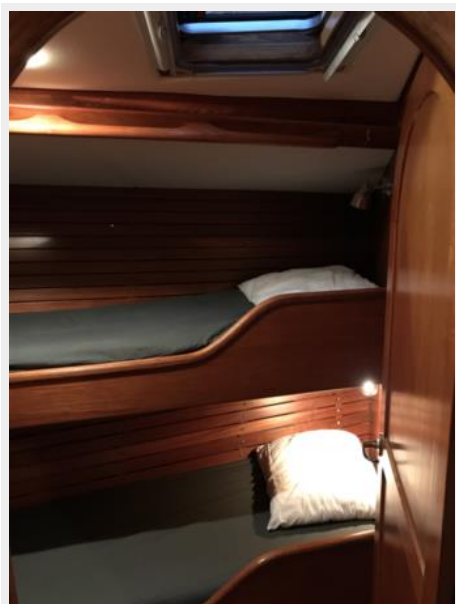
IMG\_9036



IMG\_9038



IMG\_9039



IMG\_9041



IMG\_9042



IMG\_9046



IMG\_9047



IMG\_9048





IMG\_9049



IMG\_9050



IMG\_9051



IMG\_9052



IMG\_9053



IMG\_9054



IMG\_9055



IMG\_9056



IMG\_9057



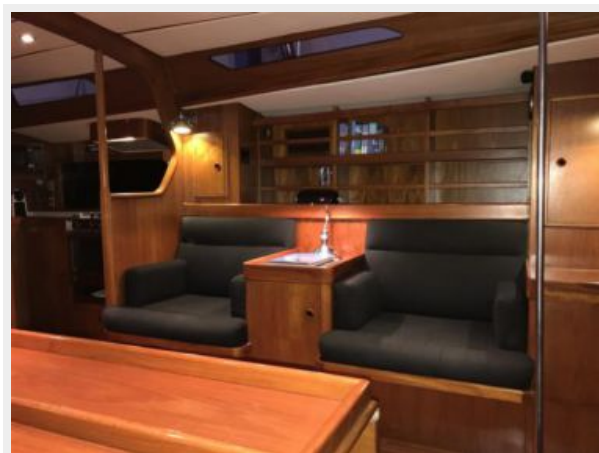
IMG\_9058



IMG\_9061



IMG\_9062



IMG\_9063



IMG\_9065

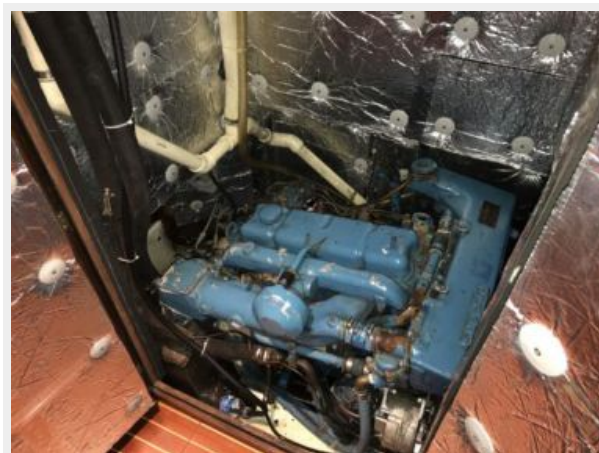




IMG\_9066



IMG\_9067



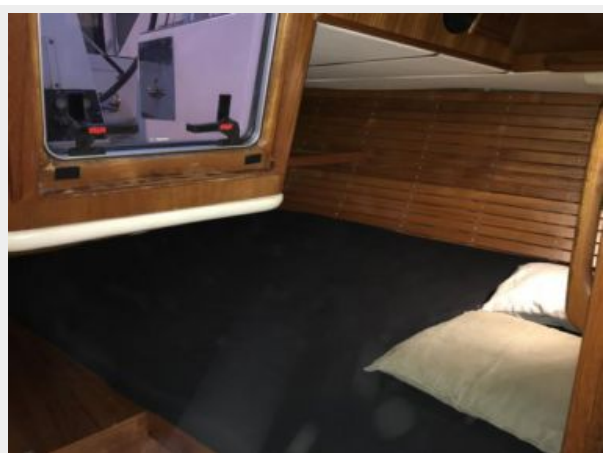
IMG\_9069



IMG\_9070



IMG\_9071



IMG\_9072



IMG\_9073



IMG\_9726



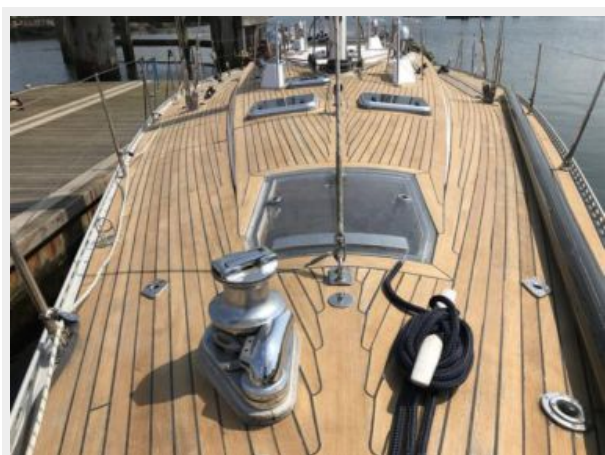
IMG\_9727



IMG\_9728



IMG\_9729



IMG\_9730





IMG\_9731



IMG\_9732



IMG\_9733



IMG\_9734



IMG\_9735



# КОНТАКТЫ

---

Андрей Шестаков (Andrey Shestakov) – ведущий яхтенный брокер отдела продаж яхт и судов компании Shestakov Yacht Sales Inc. Официальный представитель Shestakov Yacht Sales Inc. для русскоговорящих клиентов в центральном офисе компании в Майами/Форт Лодердейл/Флорида/США.

## Контактная информация

---

Email: [andrey@shestakovyachtsales.com](mailto:andrey@shestakovyachtsales.com)

Web: [shestakovyachtsales.com](http://shestakovyachtsales.com)

## Телефоны

---

Краснодарский край: **+7(918)465-66-44**

США, Майами, Флорида: **+1(954)274-4435**

## Время работы

---

Понедельник – Суббота: **9:00 - 21:00**  
EDT

Воскресенье: **Закрето**

## Адрес

---



Harbour Towne Marina, 850 NE 3rd St,  
STE 213, Dania, FL 33004