

M.P. — MAINSHIP



Builder: MAINSHIP

Year Built: 2002

Model: SHELBY

Price: PRICE ON APPLICATION

Location: United States

LOA: 34' 0" (10.36m)

Beam: 12' 3" (3.73m)

Min Draft: 3' 3" (0.99m)

Cruise Speed: 7.820786178 Kts. (9 MPH)

Max Speed: 12.165667388 Kts. (14 MPH)

Our experienced yacht broker, Andrey Shestakov, will help you choose and buy a yacht that best suits your needs **M.P. — MAINSHIP** from our catalogue. Presently, at Shestakov Yacht Sales Inc., we have a wide variety of yachts available on our sale's list. We also work in close contact with all the big yacht manufacturers from all over the world.

If you would like to buy a yacht **M.P. — MAINSHIP** or would like help answering any questions concerning purchasing, selling or chartering a yacht, please call **+1(954)274-4435**

TABLE OF CONTENTS

TABLE OF CONTENTS	2
SPECIFICATIONS	4
Overview	4
Basic Information	4
Dimensions	5
Speed, Capacities and Weight	5
Accommodations	5
Hull and Deck Information	5
Engine Information	5
DETAILED INFORMATION	6
FULL SPECIFICATIONS	6
Exclusions	6
Disclaimer	6
PHOTOS	7
95123	7
8541	7
54456	7
3284	7
9632	8
014787	8
4613	8
129734	8
234578	8
134785	8
1147854	9
610813	9
13081625	9
461350	9

741012	9
03321545	9
31460736	10
IMG_6967	10
1548	10
CONTACTS	11
Contact details	11
Telephones	11
Office hours	11
Address	11

SPECIFICATIONS

Overview

OWNERS NOTES

Solid boat. Strong engine. What works, what doesn't, what is needed. Good Motor. Starts easily and runs well. Does not smoke or burn oil. Turbo spins up. Needs mixing elbow and turbo removed and inspected. No issues with either one now, but should be done. Temp gauge on instrument panel needs rewiring. Currently has analogue temp gauge, separate from instrument panel. ZF transmission is solid. Dripless shaft seal excellent condition. Stainless shaft. All systems and engine /batteries/steering gear easily accessible. Sea Fire FH50A automatic engine room fire suppression needs servicing. Domestic Vacuum flush head. Pump needs seals. Side Power SP30S bow thruster. Controls at helm. Works well. Bennet Marine trim tabs. Need to be wired. Raymarine X-30 Corepacks auto pilot, raymarine M81120 hydraulic auto pilot pump. Sea star hydraulic steering ram. All work. Nova Cool 3 way (AC, DC, PROPANE) fridge freezer. Works well. Propane stove, works well. Plumbed and wired for generator, including thru hull, sea strainer, fuel lines. Bimini over forward half of cockpit. Fair condition. Sunbrella good, could use some restitching. Interior cushions in excellent shape. A few of the cockpit cushions need covering. Restapled. Boat could use bottom paint. Gel coat in good condition with no chalking. Interior lights, fans, outlets all functioning. Electric windlass with remote and chain/rope rode. Works great. Depth sounder, vhf work. Oil change pump needs new switch. Domestic aircon/heat. Needs refrigerant. Hot water heater works, off engine and AC supply.

The extended hard enclosure of the Pilot 34 Sedan offers all-weather protection from the elements and increases full-time useable space on the bridge deck with your choice of hard side windows or eisenglass with u-zips. An aft drop-curtain is standard with this option.

Basic Information

Category: SHELBY

Sub Category: Pilothouse

Model Year: 2002

Year Built: 2002

Country: United States

Dimensions

LOA: 34' 0" (10.36m)**Beam:** 12' 3" (3.73m)**Min Draft:** 3' 3" (0.99m)**Clearance:** 9' 0" (2.74m)

Speed, Capacities and Weight

Cruise Speed: 7.820786178 Kts. (9 MPH)**Max Speed:** 12.165667388 Kts. (14 MPH)**Water Capacity:** 80 Gallons**Holding Tank:** 80 Gallons**Fuel Capacity:** 250 Gallons

Accommodations

Total Cabins: 1**Total Berths:** 1**Sleeps:** 4**Total Heads:** 1

Hull and Deck Information

Hull Material: Fiberglass

Engine Information

Engines: 1**Manufacturer:** Yanmar**Model:** 6lya-ute**Engine Type:** Inboard**Fuel Type:** Diesel

DETAILED INFORMATION

FULL SPECIFICATIONS

ACCOMMODATIONS:

Large v berth fwd. convertible setee to stbd. Fans, lights, opening ports, deck hatch. Large dining table. Chart table in cockpit next to helm, protected by windshield

GALLEY EQUIPMENT:

Fridge freezer, working Microwave, working Stovetop, working Coffee maker, working Blender, working Deep single stainless sink with hot/cold pressure water

ELECTRONICS & NAVIGATION:

Autopilot Depth Vhf Battery charger Two new 8d house batteries Solar panel on cabin top with charge controller for each battery, works well

DECK & HULL:

Two anchors, one primary on the windlass, one secondary in self drawing locker in cockpit Large insulated self draining ice/fish box in cockpit Seating for ten adults. Horn, needs rewiring 30amp shore power cord Heavy duty dive style aluminum swim ladder. Full width swim platform Hot/cold pressure shower at swim platform "Tuna door" between aft cockpit and swim platform Solid rails leading from cockpit along side decks Opening center section of windshield Wipers, need rewiring

Exclusions

Owner's personal belongings.

Disclaimer

The Company offers the details of this vessel or yacht in good faith but cannot guarantee or warrant the accuracy of this information nor warrant the condition of the vessel. A buyer should instruct his representatives, agents, or his surveyors, to investigate such details as the buyer desires validated. This vessel or yacht is offered subject to prior sale, price change, or withdrawal without notice.

PHOTOS

95123



8541



54456



3284



014787



9632



4613



129734



234578



134785



1147854



610813



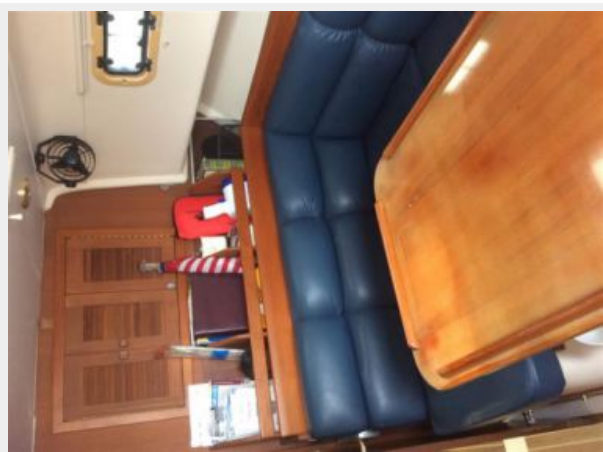
13081625



461350



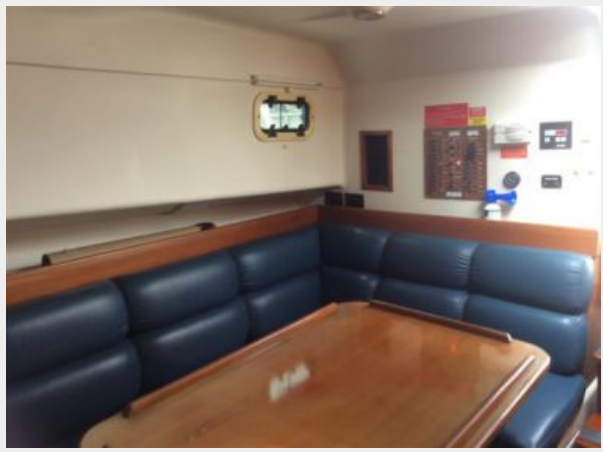
741012



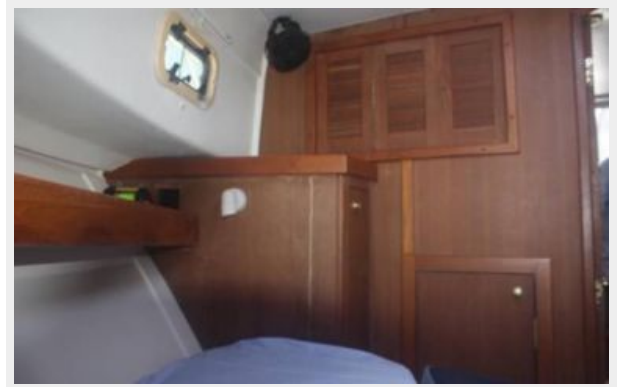
03321545



31460736



IMG_6967



1548



CONTACTS

Andrey Shestakov, leading yacht broker of the sales department of Shestakov Yacht Sales Inc. Shestakov Yacht Sales Inc., the official representative of the Miami/Fort Lauderdale FL headquarters.

Contact details

Email:
andrey@shestakovyachtsales.com

Web: shestakovyachtsales.com/en/

Telephones

USA: **+1(954)274-4435**

Office hours

Monday – Saturday: **9:00 - 21:00 EDT**

Sunday: **closed**

Address



Harbour Towne Marina, 850 NE 3rd St,
STE 213, Dania, FL 33004