

NO NAME — SEA RAY



Builder: SEA RAY

Year Built: 2013

Model: Cruising Yacht

Price: PRICE ON APPLICATION

Location: United States

LOA: 51' 0" (15.54m)

Beam: 14' 8" (4.47m)

Min Draft: 4' 1" (1.24m)

Max Draft: 4' 1" (1.24m)

Our experienced yacht broker, Andrey Shestakov, will help you choose and buy a yacht that best suits your needs **No Name — SEA RAY** from our catalogue. Presently, at Shestakov Yacht Sales Inc., we have a wide variety of yachts available on our sale's list. We also work in close contact with all the big yacht manufacturers from all over the world.

If you would like to buy a yacht **No Name — SEA RAY** or would like help answering any questions concerning purchasing, selling or chartering a yacht, please call **+1(954)274-4435**

TABLE OF CONTENTS

TABLE OF CONTENTS	2
SPECIFICATIONS	5
Overview	5
Basic Information	5
Dimensions	5
Speed, Capacities and Weight	5
Accommodations	5
Hull and Deck Information	6
Engine Information	6
PHOTOS	7
C	7
A	7
D	7
E	7
G	8
F	8
H	8
H1	8
H1V	9
H1W	9
H1X	9
H1Y	9
H1Z	10
H2	10
H3A	10
H4	10
H5	11
H6	11

H7	11
H8	11
H9	12
H9A	12
H9B	12
I	12
I2	13
I1	13
I3	13
I4	13
J	14
J1	14
J2	14
J3	14
J4	15
K	15
K1	15
L	15
L1	16
M1	16
M2	16
X	16
X2	17
X3	17
X4	17
Z	17
CONTACTS	18
Contact details	18
Telephones	18

Office hours	18
Address	18

SPECIFICATIONS

Overview

RARE INBOARD 510 SUNDANCER - NO PODS

Here is a very nice Sea Ray. This one is loaded, sexy and ready to go. This boat is powered by Cummins 600 HP QSC600 Diesels. Bow and Stern Thrusters, full electronics, two heads with showers, sleep 6, generator plum more info you can see by hitting the "FULL SPECS" button.

Basic Information

Category: Cruising Yacht

Sub Category: Cabin Cruiser

Model Year: 2013

Year Built: 2013

Country: United States

Vessel Top: Hardtop

Cockpit: Yes

Dimensions

LOA: 51' 0" (15.54m)

Beam: 14' 8" (4.47m)

Min Draft: 4' 1" (1.24m)

Max Draft: 4' 1" (1.24m)

Speed, Capacities and Weight

Displacement: 43700 Pounds

Water Capacity: 110 Gallons

Holding Tank: 60 Gallons

Fuel Capacity: 400 Gallons

Accommodations

Total Cabins: 2

Total Heads: 2

Hull and Deck Information

Hull Material: Fiberglass

Hull Color: WHITE

Engine Information

Engines: 2

Manufacturer: Cummins

Model: QSC 600

Engine Type: Inboard

Fuel Type: Diesel

PHOTOS

A



C



D



E



F



G



H



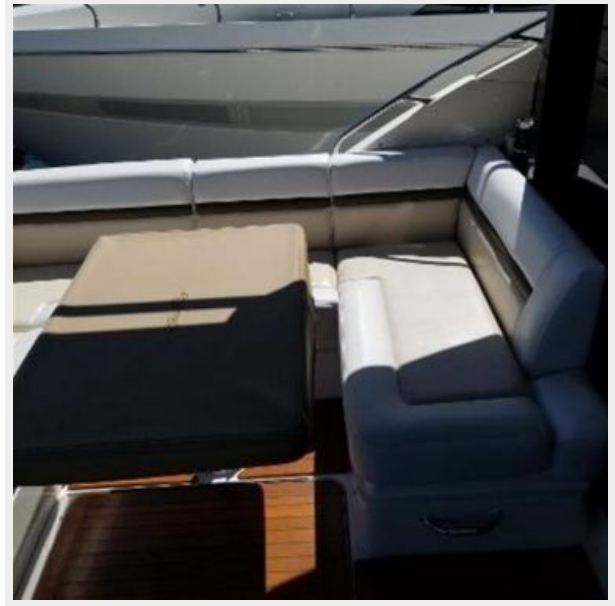
H1



H1V



H1W



H1X



H1Y



H1Z



H2



H3A



H4



H5



H6



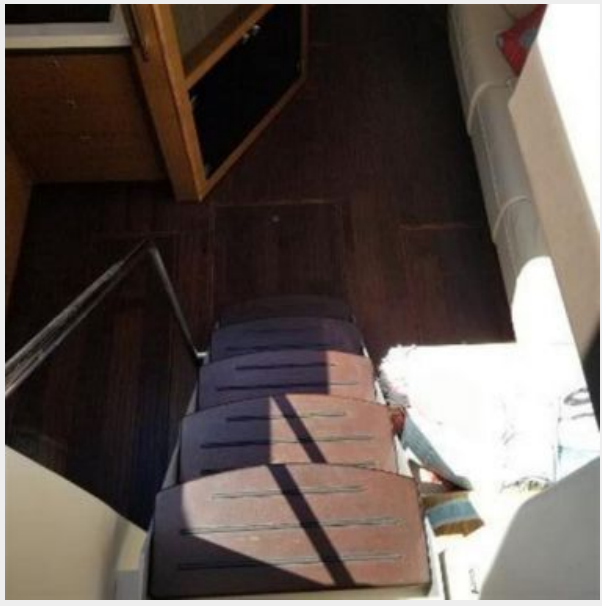
H7



H8



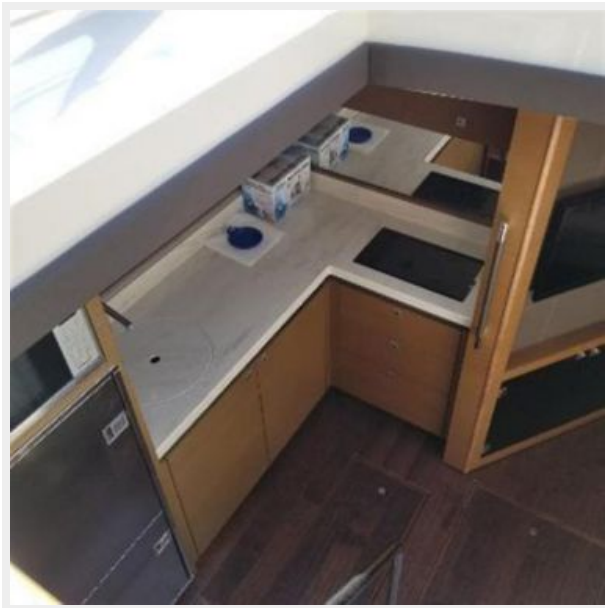
H9



H9A



H9B



I



I1



I2



I3



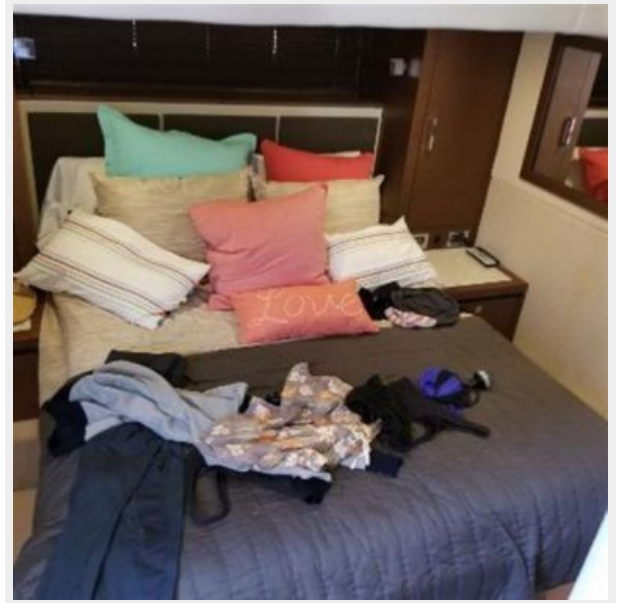
I4



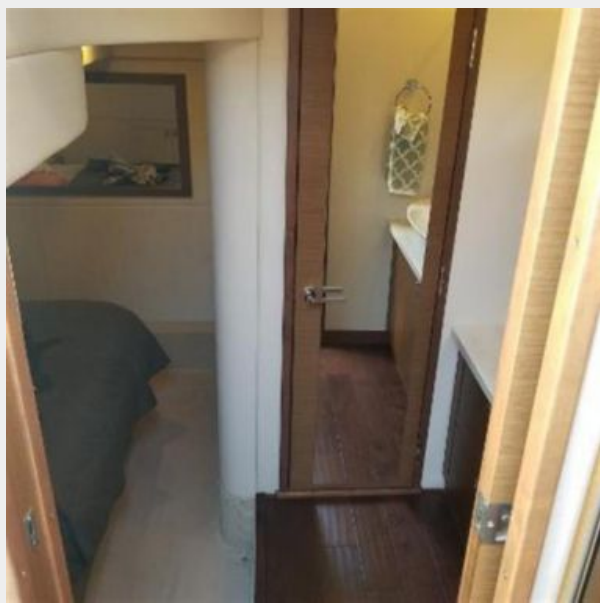
J



J1



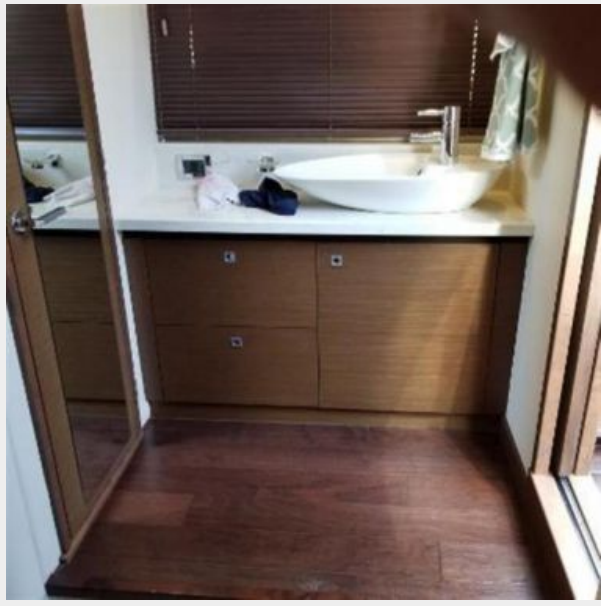
J2



J3



J4



K



K1



L



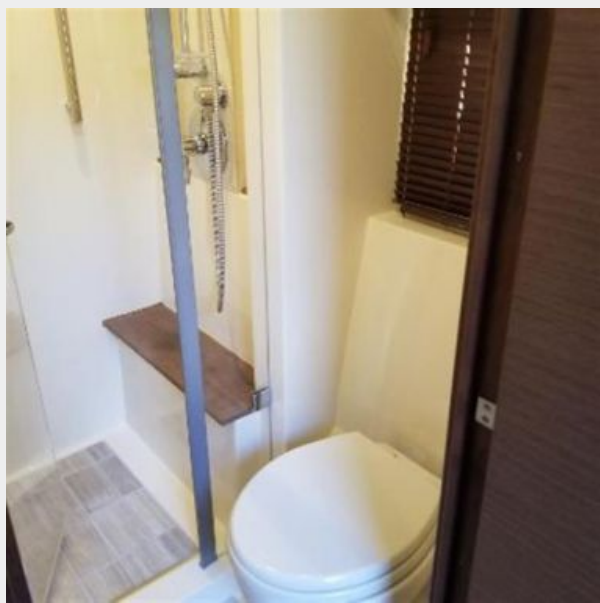
L1



M1



M2



X



X2



X3



X4



Z



CONTACTS

Andrey Shestakov, leading yacht broker of the sales department of Shestakov Yacht Sales Inc. Shestakov Yacht Sales Inc., the official representative of the Miami/Fort Lauderdale FL headquarters.

Contact details

Email: andrey@shestakovyachtsales.com

Web: shestakovyachtsales.com/en/

Telephones

USA: +1(954)274-4435

Office hours

Monday – Saturday: **9:00 - 21:00** EDT

Sunday: **closed**

Address



Harbour Towne Marina, 850 NE 3rd St,
STE 213, Dania, FL 33004