

SEAMLESSLY — FOUNTAINE PAJOT



Судостроитель: FOUNTAINE PAJOT

Год постройки: 2006

Модель: Катамаран

Цена: ЦЕНА ЯХТЫ ПО ЗАПРОСУ

Местонахождение: United States

Длина общая: 60' 0" (18.29m)

Ширина: 28' 6" (8.69m)

Мин. осадка: 4' 8" (1.42m)

Купить Seamlessly — FOUNTAINE PAJOT а также выбрать подходящую вам яхту из нашего каталога яхт вам поможет опытный яхтенный брокер Андрей Шестаков. На сегодняшний день компания Shestakov Yacht Sales Inc. имеет большое количество яхт в собственном списке продаж, а также тесно сотрудничает со всеми крупными яхтенными производителями по всему миру.

Для того чтобы купить яхту Seamlessly — FOUNTAINE PAJOT а также проконсультироваться по любому вопросу связанному с покупкой, продажей, чартером яхт позвоните по телефону **+7(918)465-66-44**.

ОГЛАВЛЕНИЕ

ОГЛАВЛЕНИЕ	2
ХАРАКТЕРИСТИКИ	4
Обзор	4
Основная информация	4
Размеры	4
Скорость, вместимость и масса	4
Размещение	5
Корпус и палуба	5
Информация о двигателе	5
ПОДРОБНОЕ ОПИСАНИЕ	6
Layout and Accommodation	6
Galley	6
Deck and Equipment	6
Electronics and Navigation	7
Electrical	8
Plumbing	8
Air Conditioning System	9
Engines and Mechanical	9
Sails and Rigging	10
Исключения	11
Отказ от ответственности	11
ФОТОГРАФИИ	12
2	12
3	12
4	12
5	12
6	12
7	12

9	13
8	13
10	13
11	13
12	13
13	13
14	14
15	14
16	14
17	14
18	14
19	14
20	15
21	15
22	15
23	15
24	15
25	15
26	16
КОНТАКТЫ	17
Контактная информация	17
Телефоны	17
Время работы	17
Адрес	17

ХАРАКТЕРИСТИКИ

Обзор

The Elethuera 60 was a game changer in the multihull world when originally launched. Seamlessly is without a doubt the nicest example of the Elethuera 60 currently floating around. Her current owners have maintained her to the highest level and upgraded her with the finest in Bluewater cruising gear.

Some of her key features include:

- Lithium ion batteries
- Bow and stern thrusters
- Low hours on her newer motors
- Low hours on her Onan generator
- Updated electronics with radar and AIS
- Extensive sail inventory
- Water maker
- Full tropical air conditioning
- A fresh Awlgrip paint job
- And much much more.

Основная информация

Тип судна: Катамаран

Модельный год: 2006

Год постройки: 2006

Страна: United States

Размеры

Длина общая: 60' 0" (18.29m)

Длина по ватерлинии: 53' 6" (16.31m)

Ширина: 28' 6" (8.69m)

Мин. осадка: 4' 8" (1.42m)

Трапы: 79' 0" (24.08m)

Скорость, вместимость и масса

Вместимость воды: 210 Gallons

Объем топливного бака: 230 Gallons

Размещение

Всего кают: 4

Всего ком. состава: 4

Корпус и палуба

Материал корпуса: Fiberglass

Информация о двигателе

Двигатели: 2

Производитель: Volvo

Модель: D3-150

Тип двигателя: Inboard

Тип топлива: Diesel

ПОДРОБНОЕ ОПИСАНИЕ

Layout and Accommodation

- Double bed (5' x 6'6' approx.) island bed with slatted base in owner's cabin
- Access to owner's head via a wooden door in the owner's cabin
- Separate shower in owner's bathroom
- Twin bunk beds in the port forward stateroom
- Spare parts storage in the port forward stateroom
- Double bed (5' x 6'6' approx.) island bed with slatted base in starboard aft guest stateroom
- Double bed with slatted bed base in forward guest stateroom
- Private access to the bathroom via a wooden door in each guest stateroom
- Hot and cold water faucet with built-in showerhead in each guest stateroom

Galley

- The bar of the U-shaped galley joins with plenty of room to prepare food for a party.
- Force 10 5 burner stove/oven/broiler (April 2020)
- double stainless-steel sink,
- bar fridge, and
- dishwasher
- Stainless-steel freezer/fridge
- Galley with 2 large working areas
- Double stainless-steel sink with drain board
- Hot and cold pressurized water, mixer faucet
- Pressurized saltwater faucet
- Stainless steel stove with 4 gas burners and ventilation hood
- Rotating fan with timer over the galley
- Under the counter stainless refrigerator
- Multiple cupboards
- Bar counter with stainless rail and bar cabinet on salon face of galley
- Dishwasher
- Isotherm stainless under-counter refrigerator in galley
- Large front-loading freezer and refrigerator with stainless doors in the starboard hull
- Raritan Icemaker
- Kitchenaid Microwave with turntable

Deck and Equipment

- Triple helmsman seat
- Varnished teak and holly cockpit table, with padded cover

- Teak finished bench seats for 8 around the table
- Locker in cockpit sole with fuel tanks and large storage area
- Large lazarette lockers with storage space, battery banks, and LPG locker
- Life raft or tank lockers (2) aft with direct access to the sea
- Bimini sunshade on stainless supports
- Painted aluminum dinghy davits with sheet stoppers for lifting tackle
- Anchor windlass, windlass handheld control, and mooring gear
- Freshwater pressure wash down pump with hose
- Spare propane bottle storage
- LED red/white deck and anchor work lights
- Teak cockpit table
- Stern shower
- Electric windlass 12V
- SB enclosure for the helm
- Upgraded swim platforms with new SeaDek (June 2020)
- Upgraded windlass hardware (June 2020)

- New anchor swivel (June 2020)

Electronics and Navigation

- Raymarine GS165 15.4" Glass bridge MFD at helm station with RMK9 remote keypad (March 2019)
- Navionics Platinum Caribbean and Bermuda charts
- Raymarine CP300 Sonar module
- Raymarine AIS 650 Class B transceiver
- SiriusXM SR150 Satellite Weather
- Raymarine I70 Color instrument displays (2)
- Raymarine CAM50 cameras (2) in engine compartments
- Raymarine ITC5 transducer converter
- Raymarine HS5 Seataalk switch
- Raymarine RS130 GPS
- Raymarine Autopilot with P70 Pilot controller, EV1 Sensor, ACU-400
- Antenna array on starboard side complete with: digital AIS antenna, NMEA 2000 GPS, backup GPS antenna (April 2020)
- VDO Rudder angle senders and gauges
- Maretron network monitoring of network, tank levels, engines, electrical, refrigeration with a text module Rogue Wave wi-fi with an external antenna and Cradlepoint router

- NMEA MasterBus interface (March 2020)

- USB MasterBus interface (March 2020)

- MasterBus network with military-grade outdoor CAT6 cable

- Vizio 32" Smart TVs (3) with wi-fi
- Iridium Go with fixed mount antenna - satellite phone Wi-Fi
- Fusion interior and exterior marine speakers (April 2020)
- Shakespeare 21" mast mounted TV antenna
- LG 32" 32LK450 TV
- Standard GX2208 Matrix AIS/GPS VHF radio with cockpit remote and speaker on the mast

Electrical

- 300 amp Relion Lithium-Ion Batteries X 4 (December 2018)
- Galvanic isolator (May 2019)
- 1400 watts LG solar panels on the custom solar arch (December 2018)
- Victron Smart Solar Charge Controller MPPT100|50 (2), (December 2018)
- Victron battery monitors (2), (December 2018)
- LED cockpit, courtesy, cabin, engine, navigation, masthead anchor/tricolor, brow light, and deck and anchor work lights
- Bluesea custom AC and DC electrical panels with tank gauges and USB charging ports
- Engine starting batteries (2),
- Cables, isolators and switching Mastervolt 24/12 volt converters (2) supply 12-volt network
- Windlass control and winch solenoids
- Cummins Onan 21.5 kW MDKBR-5185E generator 110V, (New 2015)
- Onan Generator NMEA 2000 interface
- 110V US electric outlets in all cabins, salon, nav station, galley, engine rooms, and helm station
- Marinco Mass Combi 24/4000-100 inverter/charger supplies 110 v power
- Marinco battery charger 12v 35A for engine starting batteries
- Marinco Mass 24/50 battery chargers (2) for house banks
- Mastervolt 24-5000 inverter supplies 230-volt power
- Shore power inlet
- 50 Amp 125/250 shore power cord

Plumbing

- Dometic electric macerator toilets with a fresh water supply and tank monitors
- Isotherm stainless under-counter refrigerator in galley
- Watermaker Automatic Flush kit and recently installed membranes
- Dockside intake with pressure regulator for direct connection to fresh water supply
- Isotemp 11 gallon stainless water heaters (2) with dual heat exchangers
- Water softener system with a filter on the inlet side
- Carbon block filter and UV sterilizer on the outlet side
- SPW 70 GPH Village Marine water maker with automatic flush kit 110V
- Polypropylene freshwater tanks (2) with a gauge at chart table and on the network

monitoring system Freshwater 5.7 GPM Shurflo Aqua King II pressure pumps (2) and Groco pressure storage tank

- Whale Twist deck shower with hot and cold water at the transom
- Saltwater 5.5 GPM Shurflo Extreme pressure galley pump
- Whale self-contained shower sumps with Gulper pumps (4)
- Rule self-contained A/C chiller sump and pump
- All underwater thru-hulls; Forespar Marelon thru-hulls on underwater connections
- Dometic electric macerator toilets with a fresh water supply and tank monitors
- Wastewater Y-valves to discharge directly overboard or into holding tanks
- Head holding tanks (4) with deck pump-out and overboard discharge
- Johnson 2200 GPH automatic electric bilge pumps (4)
- Manual bilge pumps in lazarettes and aft cabins (4)

Air Conditioning System

- 36,000 BTU Dometic air conditioning chillers (2),
- raw water and chilled water pumps 110V
- Air handlers with individual controls in each cabin (4), in the salon (2) and in port lazarette (1) to cool engine rooms and cockpit

Engines and Mechanical

- Volvo 110 Hp D3 inboard engines. Both engines were replaced with new engines in 2015
- New prop shafts (May 2020)
- New cutlas bearings (May 2020)
- Racor fuel polisher (December 2018)
- Oil change system (December 2018)
- New engine Zinc (May 2019)
- New bow and stern Jet Thruster system with wireless thruster control (June 2019)
- High-resistance stainless steel direct transmission shafts
- V-shaped shaft bearing brackets
- 20" three-blade Max Prop feathering propellers rebuilt May 2020
- PYI Shaft seals
- Shaft Spurs cutters
- Saltwater filters
- Engine compartment ventilation natural intake of air and 3" blowers (2)
- FireBoy automatic engine and generator shutdown (May 2020)
- Bellows on PYI shaft seals (May 2020)
- Engine/Fuel Type: Diesel
- Total Fuel Capacity: 230 Gallons
- 2 x Aluminum diesel tanks filled directly via the locker in the cockpit sole
- Fuel gauge with an indicator at chart table and on the network monitoring system

- Racor 500 pre-filter water separators (2) with vacuum gauges and water in fuel sensors
- Diesel shut-off valves accessible via the locker in the cockpit sole
- Alternators: Volvo (2) to charge engine starting batteries, High output with Mastervolt AlphaPro 2 regulators (2) to charge house banks

Sails and Rigging

- Fully battened mainsail and very high-quality genoa jib with UV cover
- Code Zero on Seldon Furier (April 2020)
- New Asymmetrical spinnaker on a Seldon furling system (April 2020)
- New Harken 60.2 electric winch (1) for genoa furling line lead aft (starboard) to sheet stopper (May 2019)
- Genoa roller furling system (New furler March 2020)
- Mainsail cover/lazy jack system (April 2020)
- White aluminum mast and boom
- Full standing rigging inspection completed (April 2020)
- Boom topping lift
- Reef lines (3)
- Running, steaming, tricolor masthead and anchor lights
- Lazy jacks
- Deck work lighting
- Mainsheet lead aft of the cockpit
- Sheet stopper for mainsheet
- Harken 60 2-speed winches (2) for mainsheet, gennaker, and spinnaker
- Harken ball-bearing sheet traveler
- Harken electric 46 2-speed self-tailing winch for mainsail halyard and reef lines 12V
- Harken 44 2-speed self-tailing winch for genoa/spinnaker halyards
- Ball bearing slides on the mainsail luff
- Traveler trimming tackle on sheet stoppers (2)
- Genoa sheet track with a lead block (2)
- Genoa sheets (2)
- Harken 70 2-speed winches (2) for genoa
- Genoa furling line lead aft to sheet stopper
- Windlass Lofrans Falkon FK001764 1500w 24v with handheld control
- Fortress anchor with 200' 1/2" ISO anchor chain and anchor bridle
- 100' 1/2" ISO anchor chain 260' Megabraid anchor rode
- Genoa halyards (2)
- Spinnaker halyard
- 2:1 double braid mainsail halyard
- Flag halyards (2)
- Stoppers for halyards (4)
- White vinyl fenders (3)
- Mesh sunshade for the foredeck

- Acrilan cushions for all cockpit seats
- Mesh window covers on salon side windows
- Acrilan blinds in all staterooms
- 80G acrylic hard glass at front of the cockpit
- Chilewich custom floor mats in salon and galley
- Stamoid bimini top

Исключения

При продаже яхты исключаются личные вещи владельца.

Отказ от ответственности

Компания предоставляет описание судна или яхты добросовестно, но не может гарантировать точность этой информации, а также не ручается за техническое состояние. Покупатель должен проинструктировать своих агентов или оценщиков исследовать представленную информацию более подробно, по собственному желанию. Продажа судна или яхты, изменение цены или снятие с продажи будет происходить без предварительного уведомления.

ФОТОГРАФИИ

2



3



4



5



6



7



8



9



10



11



12



13



14



15



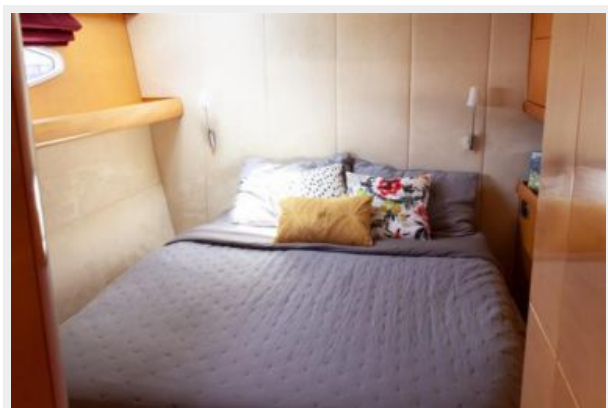
16



17



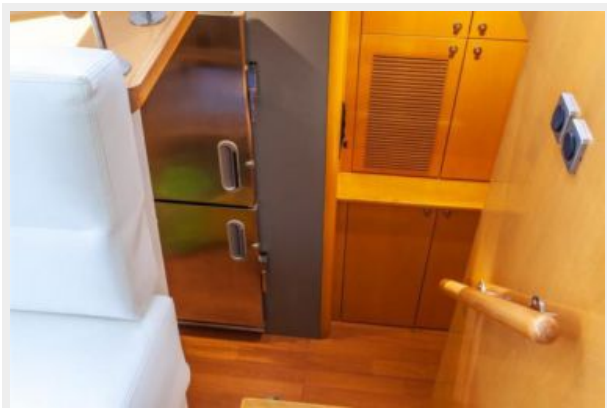
18



19



20



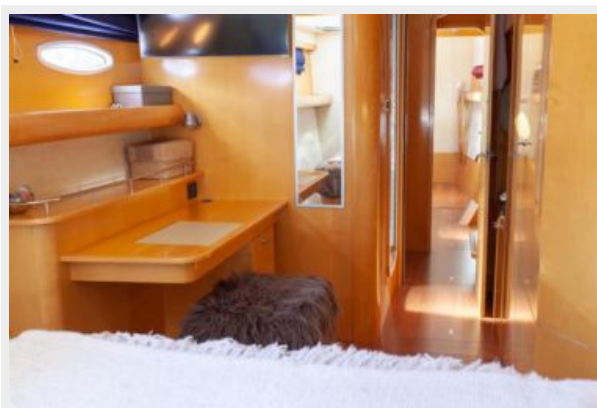
21



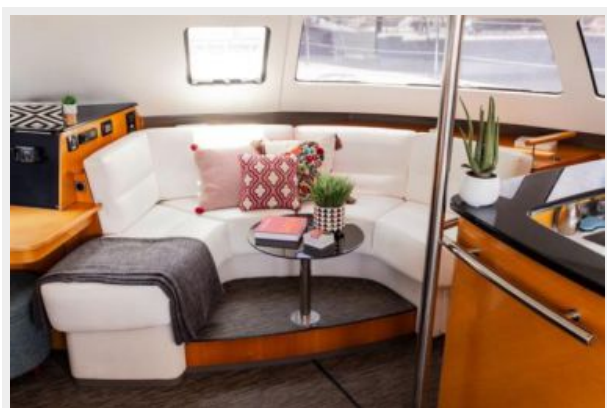
22



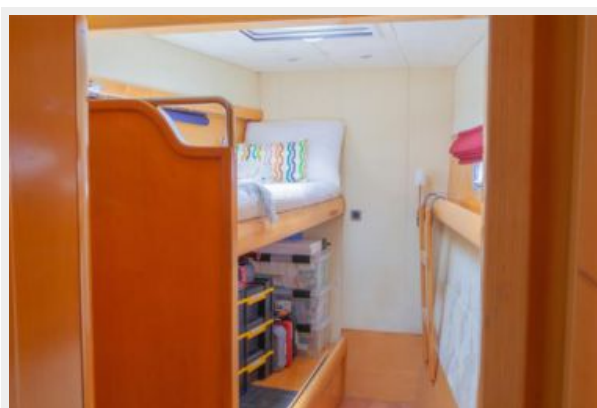
23



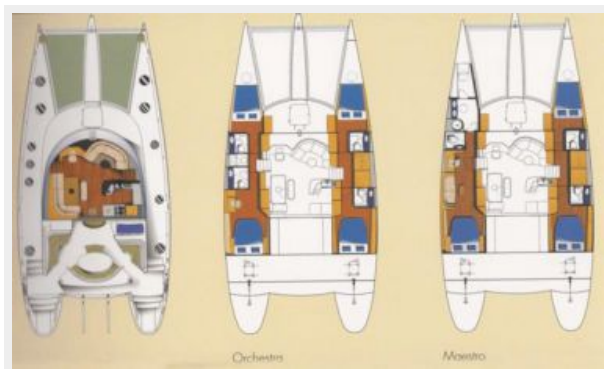
24



25



26



КОНТАКТЫ

Андрей Шестаков (Andrey Shestakov) – ведущий яхтенный брокер отдела продаж яхт и судов компании Shestakov Yacht Sales Inc. Официальный представитель Shestakov Yacht Sales Inc. для русскоговорящих клиентов в центральном офисе компании в Майами/Форт Лодердейл/Флорида/США.

Контактная информация

Email: andrey@shestakovyachtsales.com

Web: shestakovyachtsales.com

Телефоны

Краснодарский край: **+7(918)465-66-44**

США, Майами, Флорида: **+1(954)274-4435**

Время работы

Понедельник – Суббота: **9:00 - 21:00**
EDT

Воскресенье: **Закрито**

Адрес



Harbour Towne Marina, 850 NE 3rd St,
STE 213, Dania, FL 33004