

TITAN — PASSPORT YACHTS



Builder: PASSPORT YACHTS

Year Built: 1981

Model: Cruising Sailboat

Price: PRICE ON APPLICATION

Location: United States

LOA: 42' 6" (12.95m)

Beam: 12' 11" (3.94m)

Max Draft: 6' 4" (1.93m)

Our experienced yacht broker, Andrey Shestakov, will help you choose and buy a yacht that best suits your needs Titan — PASSPORT YACHTS from our catalogue. Presently, at Shestakov Yacht Sales Inc., we have a wide variety of yachts available on our sale's list. We also work in close contact with all the big yacht manufacturers from all over the world.

If you would like to buy a yacht Titan — PASSPORT YACHTS or would like help answering any questions concerning purchasing, selling or chartering a yacht, please call +1(954)274-4435

TABLE OF CONTENTS

TABLE OF CONTENTS	2
SPECIFICATIONS	5
Overview	5
Basic Information	5
Dimensions	5
Speed, Capacities and Weight	6
Accommodations	6
Hull and Deck Information	6
Engine Information	6
DETAILED INFORMATION	7
Overview	7
Exclusions	10
Disclaimer	10
PHOTOS	12
2	12
3	12
4	12
5	12
7	13
6	13
8	13
9	13
10	14
11	14
12	14
13	14
15	15
14	15

16	15
17	15
18	16
19	16
21	16
20	16
23	17
22	17
25	17
24	17
26	18
27	18
28	18
29	18
30	19
31	19
32	19
33	19
34	19
35	19
37	20
36	20
38	20
39	20
41	21
40	21
42	21
43	21
44	22

45	22
CONTACTS	23
Contact details	23
Telephones	23
Office hours	23
Address	23

SPECIFICATIONS

Overview

This boat had previously been listed as a Slocum 43. Through extensive investigation, we have now determined she is actually a Passport 42 hull no. 8. Review of her Hull number, Interior configuration and underbody design she is a Passport. Both boats were designed by Stan Huntingford and built in Taiwan at perhaps the same yard. I have been given the original brochure for this boat and have it in the pictures, she is exactly what the brochure shows inside and out. The Passport 42 is a proven blue water cruiser. She is a cutter rigged double ender designed by Stan Huntingford who also designed an extensive list of well-known cruising sailboats including the Slocum 43 (based on this same design). This is a perfect live-aboard and long distance cruiser. Very comfortable with a warm and practical layout. The previous owner completed a major update and refit, replacing the existing teak decks with new re-cored decks and nonskid. All new seacocks, pumps, sump pumps, plumbing, sinks, faucets, toilet, counter tops, many new electronics, transducers, refrigerator, blinds, air-conditioning, new engine etc. Her interior was completely refinished in varnish. In the spring of 2019 she received all new sails by Quantum and new Roller Furling for both headsails, new canvas side curtains as well as a recently installed Webasto diesel fired hot air heating system. The only thing left to attend to is to refinish her exterior teak and she will be ready to sail the world.

Basic Information

Category: Cruising Sailboat

Model Year: 1981

Year Built: 1981

Country: United States

Dimensions

LOA: 42' 6" (12.95m)

Beam: 12' 11" (3.94m)

Max Draft: 6' 4" (1.93m)

Clearance: 59' 0" (17.98m)

MFG Length: 42' 0" (12.80m)

Speed, Capacities and Weight

Displacement: 28104 Pounds

Water Capacity: 150 Gallons

Holding Tank: 15 Gallons

Fuel Capacity: 80 Gallons

Accommodations

Total Cabins: 3

Total Heads: 1

Hull and Deck Information

Hull Material: Fiberglass

Hull Designer: Stan Hundtingford

Engine Information

Engines: 1

Manufacturer: Beta

Model: Kubota

Engine Type: Inboard

Fuel Type: Diesel

DETAILED INFORMATION

Overview

Accommodations

She has a lovely, warm interior with Teak tongue and groove paneling throughout, solid teak trim and a teak and holly sole. The teak adds to her warmth yet she has 7 opening bronze ports, 4 hatches and large side lights for an abundance of light and ventilation. The upholstery in the forward cabin and main salon is a lovely "Seafoam" green, the aft starboard quarter berth is a beige vinyl and the aft port cabin is a beige canvas (recently updated).

Starting forward and aft of the chain locker is the first stateroom. Offset double berth to port with an upholstered seat to starboard. Aft of the stateroom and to starboard are two separate hanging lockers. Opposite to port is a large head with separate shower stall, vanity and toilet. We then enter the Main salon, to port is an L-shaped dinette with dining table, out board are lockers and shelving. Aft of the dinette is a wonderful U-shaped Sea galley that is followed by the second private stateroom with hanging locker and double berth. To starboard is a cabinet and shelf followed by the settee, also with shelving and lockers outboard. This is followed by a forward facing navigation station, hanging wet locker and lastly a quarter berth. The companionway steps are slightly offset to starboard and lead to her cockpit. She has a deep, T-shaped cockpit with pedestal wheel steering, cockpit table and drink holder mounted on pedestal. Access to the foredeck is very comfortable with wide side decks and high toe rails or bulworks.

Galley

She has a wonderful large U-shaped Sea galley. There is an abundant amount of counter and cabinet space for food prep and storage. Custom plate storage outboard as well as lockers, drawers forward and more lockers aft.

- Single deep stainless steel sink with hot and cold pressure water as well as a manual tap
- Force 10 3 burner stove with oven
- Isotherm freezer with separate fridge
- Farberware microwave

- Black and Decker Toaster oven

Electrical

- 4 - group 31 AGM batteries (located in the port cabin sole)
- 1 - group 31 AGM battery (located under the starboard aft cabin berth)
- Battery selector switch
- Mastervolt Power Charger (located in hanging locker stb of companionway)
- 30amp/120V AC shore power
- GFCI outlets in galley and head
- AC panel @ Nav station
- 100W solar panel mounted on bimini
- Balmar smartgauge battery monitor
- 2200 watt Honda portable generator
- Fleming Self-steering wind vane

Mechanical

- 2007 Beta Marine Kubota 43HP dsl engine, fresh water cooled, with 534hrs
- Racor fuel filter
- Reverse-cycle 16K BTU Marine air-conditioning
- 2019 Webasto EVO 55 hot air heat
- 2 to 1 Twin disc transmission
- 1 1/4" shaft diameter
- New cutlass bearing
- Dripless shaft seal
- Bronze 3 blade 17" RH prop
- 2012 two new 40 gallon fuel tanks were installed under the cockpit

Electronics

Located at the Navigation station;

- Raymarine E-80 Chart Plotter/Radar
- Panasonic RF-B6001 Receiver
- Icom IC-600 SSB Transceiver
- Horizon Eclipse BHF radio

Located at the helm;

- Raymarine ST 6000 autopilot
- Raymarine ST 6000 wind direction
- Raymarine ST 6000 Speed
- Raymarine ST 6000 Depthsounder
- Raymarine 135 GPS

4K Raymarine Radar dome Vector AIS system integrated with chart plotter

Sails and Rigging

- Isomat aluminum spar stepped on the keel with double spreaders
- Aluminum boom
- Stainless steel wire standing rigging
- Stainless steel chain plates fastened to the hull
- Aluminum Mast plate
- Furler 204s roller furling staysail (optional club footed boom)
- Furler roller furling headsail
- Traveler mounted on cabin top just forward of the dodger
- 2019 Quantum mainsail with tan sail cover
- 2019 Quantum Jib with tan sunshield
- 2019 Quantum staysail with tan sunshield

Deck Equipment

- Stainless steel bow and stern pulpits with side stanchions and double life lines. Gates both port and starboard
- 2 Chrome cowl vents
- 12V DC electric Lofrans Tigress windlass

- Teak decks were removed, deck was re-cored and fibreglassed and finished with non-skid
- Teak hand rails
- Teak toe rail caps
- Teak striker rails port and starboard
- Teak fixed window trim
- Teak eyebrows
- New Rocna #55 Plow anchor with all chain
- 7 bronze opening ports
- 4 hatches
- Cockpit cushions
- Original Teak overlay in cockpit (seats, sole and cabin top)
- Teak wheel
- Pedestal with table and drink holder
- T-shaped cockpit
- 2019 Dodger
- 2019 Bimini
- 2019 full enclosure with isinglass
- Stainless steel and teak boom gallows
- Dock lines
- 8' fiberglass dinghy
- New 2.5HP Suzuki 4 stroke outboard engine

Disclaimer

The Company offers the details of this vessel in good faith but cannot guarantee or warrant the accuracy of this information nor warrant the condition of the vessel. A buyer should instruct his agents, or his surveyors, to investigate such details as the buyer desires validated. This vessel is offered subject to prior sale, price change, or withdrawal without notice.

Exclusions

Owner's personal belongings.

Disclaimer

The Company offers the details of this vessel or yacht in good faith but cannot guarantee or warrant the accuracy of this information nor warrant the condition of the vessel. A buyer should instruct his representatives, agents, or his surveyors, to investigate such details as the buyer

desires validated. This vessel or yacht is offered subject to prior sale, price change, or withdrawal without notice.

PHOTOS

2



3



4



5



6



7



8



9



10



11



12



13



14



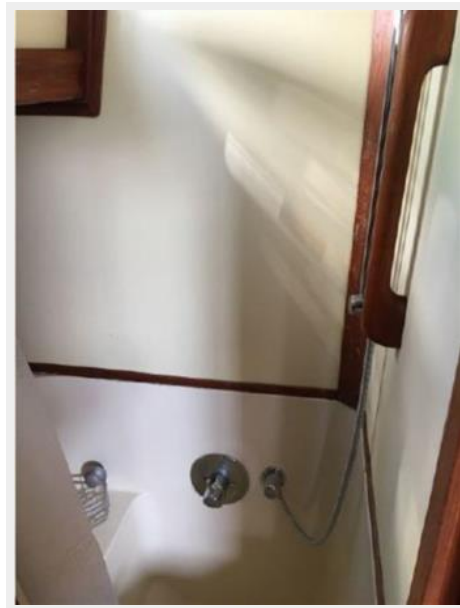
15



16



17



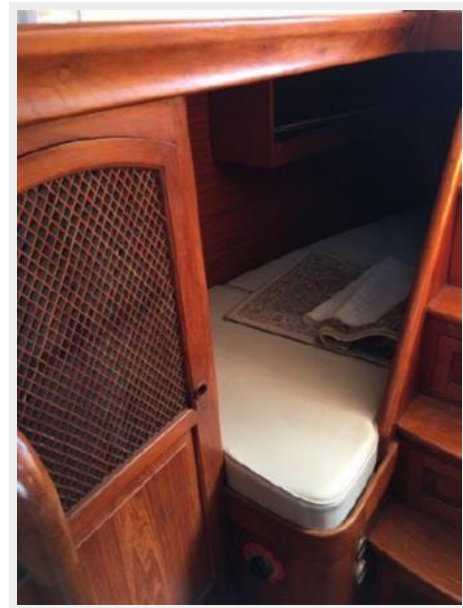
18



19



21



20



22



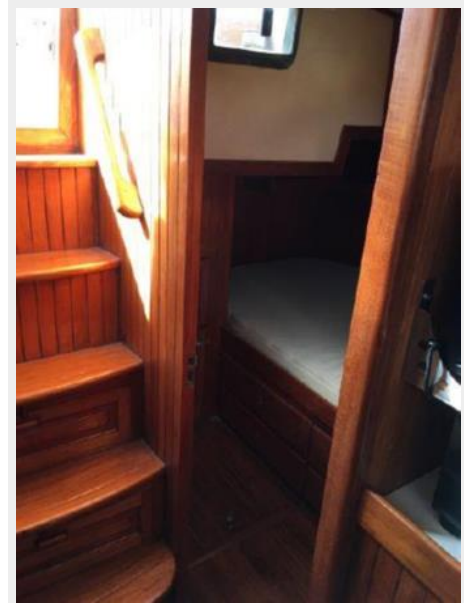
23



24



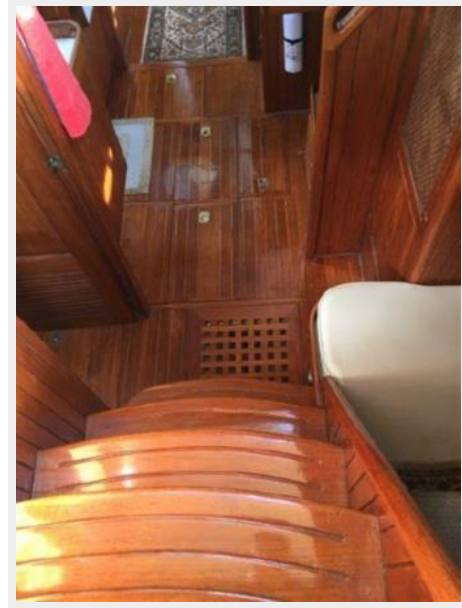
25



26



27



28



29



30



31



32



33



34



35



36



37



38



39



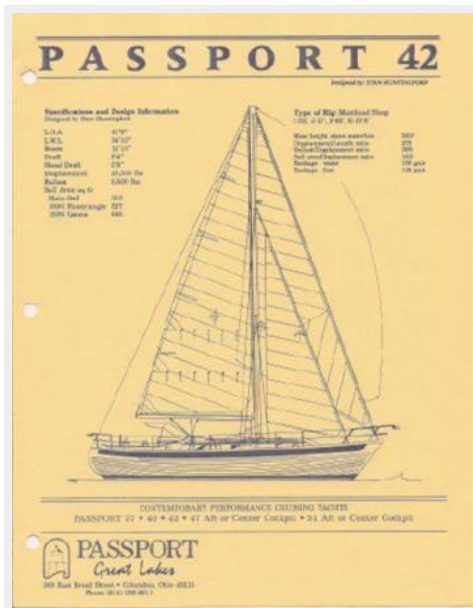
40



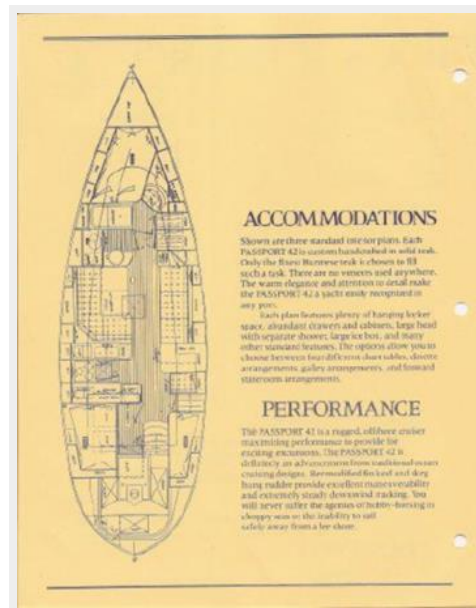
41



42



43



CONTACTS

Andrey Shestakov, leading yacht broker of the sales department of Shestakov Yacht Sales Inc. Shestakov Yacht Sales Inc., the official representative of the Miami/Fort Lauderdale FL headquarters.

Contact details

Email: andrey@shestakovyachtsales.com

Web: shestakovyachtsales.com/en/

Telephones

USA: +1(954)274-4435

Office hours

Monday – Saturday: **9:00 - 21:00** EDT

Sunday: **closed**

Address



Harbour Towne Marina, 850 NE 3rd St,
STE 213, Dania, FL 33004