

ADVENTURUS — BACK COVE



Судостроитель: BACK COVE

Год постройки: 2010

Модель: Моторная яхта

Цена: **ЦЕНА ЯХТЫ ПО ЗАПРОСУ**

Местонахождение: United States

Длина общая: 37' 0" (11.28m)

Ширина: 13' 3" (4.04m)

Мин. осадка: 0' 0" (0.00m)

Макс. осадка: 3' 7" (1.09m)

Крейс. скорость: 21 Kts. (24 MPH)

Макс. скорость: 25 Kts. (29 MPH)

Купить **ADVENTURUS — BACK COVE** а также выбрать подходящую вам яхту из нашего каталога яхт вам поможет опытный яхтенный брокер Андрей Шестаков. На сегодняшний день компания **Shestakov Yacht Sales Inc.** имеет большое количество яхт в собственном списке продаж, а также тесно сотрудничает со всеми крупными яхтенными производителями по всему миру.

Для того чтобы купить яхту **ADVENTURUS — BACK COVE** а также проконсультироваться по любому вопросу связанному с покупкой, продажей, чартером яхт позвоните по телефону **+7(918)465-66-44**.

ОГЛАВЛЕНИЕ

ОГЛАВЛЕНИЕ	2
ХАРАКТЕРИСТИКИ	5
Обзор	5
Основная информация	5
Размеры	5
Скорость, вместимость и масса	5
Размещение	5
Корпус и палуба	6
Информация о двигателе	6
ПОДРОБНОЕ ОПИСАНИЕ	7
Overview	7
Salon	7
Galley	7
Master Stateroom	7
Guest Stateroom	8
Head	8
Hull	8
Deck	8
Mechanical	9
Electrical Systems	9
Electronics	9
Upgrades	9
Exclusions	9
Исключения	10
Отказ от ответственности	10
ФОТОГРАФИИ	11
Salon	11
Salon	11

Salon	11
Helm	11
Helm	11
Galley	11
Galley	12
Galley	12
Master Stateroom	12
Master Stateroom	12
Master Stateroom	12
Master Stateroom	12
Guest Stateroom	13
Guest Stateroom	13
Head	13
Head	13
Head	13
Head	13
Aft Deck	14
Aft Deck	14
Aft Deck	14
Bow	14
Engine Area	14
025 Adventurus	14
Running	15
Running	15
Running	15
КОНТАКТЫ	16
Контактная информация	16
Телефоны	16
Время работы	16

Адрес

16

ХАРАКТЕРИСТИКИ

Обзор

ADVENTURUS is a highly desirable 37 Back Cove Express. She has always been moored under cover and stored in a heated warehouse each winter. Always professionally maintained, she is in great condition. The beautiful and classic Downeast profile and design are well-suited for boating in the Pacific Northwest. ADVENTURUS features a variety of upgrades and the expected quality and reliability of a Back Cove. She is ready to go cruising! Call today!

Основная информация

Тип судна: Моторная яхта

Модельный год: 2010

Год постройки: 2010

Страна: United States

Размеры

Длина общая: 37' 0" (11.28m)

Ширина: 13' 3" (4.04m)

Мин. осадка: 0' 0" (0.00m)

Макс. осадка: 3' 7" (1.09m)

Скорость, вместимость и масса

Крейс. скорость: 21 Kts. (24 MPH)

Макс. скорость: 25 Kts. (29 MPH)

Водоизмещение: 22000 Pounds

Вместимость воды: 120 Gallons

Вместимость сточного бака: 50 Gallons

Объем топливного бака: 300 Gallons

Размещение

Всего кают: 2

Всего коек: 3

Спальные места: 6

Всего ком. состава: 1

Корпус и палуба

Материал корпуса: Fiberglass

Информация о двигателе

Двигатели: 1

Производитель: Cummins

Модель: QSC 8.3

ПОДРОБНОЕ ОПИСАНИЕ

Overview

ADVENTURUS is a highly desirable 37 Back Cove express. She has always been moored under cover and stored in a heated warehouse each winter. Always professionally maintained, she is in great condition. The beautiful and classic Downeast profile and design are well-suited for boating in the Pacific Northwest. ADVENTURUS features a variety of upgrades and the expected quality and reliability of a Back Cove. She is ready to go cruising! Call today! The master stateroom has an island berth, allowing for ease of egress and more storage including many lockers and drawers. To starboard aft of the master stateroom is a guest stateroom with a double berth and ample storage capacity. Opposite and to port is a large head unit with separate stall shower. Between lower and salon sole levels, there is a mid-ship galley fully equipped with a two-drawer refrigerator, freezer, microwave, deep stainless steel sink, and plenty of storage space. Large windows overhead give the feeling of a much larger boat and add visibility and light to the galley. In the salon there are two seats for helmsman and crew. Aft of the helm is a L-shaped settee. A shorter settee is on the port side. A large inlaid table offers a comfortable and elegant space for dining. Large windows provide ample light and air while overhead a large sliding pilot hatch allows for air flow. Opening to the cockpit are large swing doors that open to the salon. The transom includes fixed seating that can provide the comfort you desire while guests are onboard.

Salon

- L-Settee with Hi/Low table converts to double berth
- Double settee opposite with molded end table
- Stidd helm seats
- OCEAN AIR BLINDS ON SIDE WINDOWS
- OCEAN AIR BLINDS (4) ON BI-FOLD SALON ENTRY DOORS
- CUSTOM SABRE CANTALUPPI LIGHTS
- Flip-down LCD TV and DVD player
- Kenwood stereo
- Large engine room hatch opens by electro-hydraulic actuator
- Premium flooring material
- Molded headliner with padded panel inserts

Galley

- Princess 2-burner electric surface mount cook-top
- (2) Vitrefrigo AC/DC drawer-type refrigerator compartments
- Contoure convection microwave
- Galley sink with single lever faucet & drop in cover
- Corian solid surface countertop
- Contoure under-counter convection microwave
- Contoure coffee maker
- Drawer and doors below counter
- Molded lighting soffit over countertop
- Premium flooring material

Master Stateroom

- Cherry interior on molded composite hull liner
- High pressure laminate teak-n-holly cabin sole

Molded headliner with padded panel inserts• Island queen centerline berth forward with drawers and storage below• Shelves outboard with cherry fiddles• Cherry hull ceiling• Cedar lined hanging locker with shelf• Reading lights• Multi drawer dresser with dovetailed drawers• LED overhead lighting

Guest Stateroom

• Molded headliner with padded panel inserts• Wide double berth with drawers under• Night stand with storage• Outboard storage shelves over berth• Cherry headboard with reading lights• Cherry hull ceiling

Head

• Oversized head with separate shower stall• Built-in vanity with sink• Solid surface countertop• Full length mirror on door• Single lever faucet and soap dispenser• Shower drain sump pump system• Molded seat in shower stall with storage beneath & locker outboard• Fresh water electric MSD with holding tank• Waste tank monitor• Macerator for overboard discharge• Pump out fitting on deck• Stainless steel opening port with screen• 12V Vent Fan

Hull

• DARK BLUE HULL GELCOAT• Vacuum infused FRP construction• Advanced prop pocket hull design• Back Cove white iso-npg gelcoat• Vinylester backup resin• Cross-linked PVC foam core• Multiaxial E glass reinforcement• Awlgrip boot top• Molded cove stripe depression with gold leaf style stripe

Deck

• Quick Windlass with helm remote• Vacuum infused FRP construction• Port & starboard molded steps leading to side & fore deck• Varnished Teak accent stripe• Back Cove white iso-npg gelcoat with graystone anti-skid on walking surfaces• Multiaxial E glass reinforcement• Lewmar hatch with screen in main cabin• Lewmar hatch with screen over island berth• Lewmar hatch with screen over head compartment• Lewmar hatch with screen over guest stateroom• Lewmar pilot hatches with screens/shades in hardtop• (6) opening Port lights with screens• Clear anodized aluminum windshield with center opening• Trumpet horn on hardtop• Anchor locker• Molded Composite bow sprit w/ stainless steel anchor roller• Mooring cleats w/ skene chocks forward, aft & spring line cleats• Pop-up cleats at transom corners• Custom 1 1/4" 316L stainless steel bow rail• (2) Stidd 500N helm seats• Swim platform and swim ladder• Hot and cold cockpit shower• Self bailing cockpit• Transom Door• Seat in cockpit with storage below

Mechanical

• CUMMINS QSC 8.3 600hp ELECTRONIC ENGINE AND MARINE GEAR• Electronic single lever engine control• Vessel View Smartcraft display• 3-zone air conditioning with reverse-cycle heat• Digital engine control panel with alarms and hour meter• Internal sea strainer• Fuel Filter• (3) Engine room lights• 2" Aquamet shaft• 4 Blade NiBrAl propeller• Dripless shaft log• Electric trim tabs with indicators• 6" Exhaust with two stage horizontal muffler• Teleflex hydraulic steering with tilt helm pump• Stazo teak steering wheel• Hot and Cold pressurized water (110V and engine heated)• 11 gallon hot water heater with heat exchanger• Sidepower bow and stern thrusters• Marelon sea valves on underwater thru hulls• Fireboy extinguisher system & carbon monoxide detector• Macerator with overboard discharge

Electrical Systems

• Onan 9kw generator and sound shield w/ 335 hrs. • AC and DC control panels with polarity indicator• DC system battery management switching• DC breakers for electronics• (2) 110V AC 30 amp shorepower with 50 foot cord set• Emergency parallel switch• Galvanic isolator• Battery Charger, 50 amp• (2) 4D AGM house battery• (3) Group 31 engine start battery• (3) 12VDC automatic bilge pumps• 12V outlet at helm• Bonding system with zinc anode• Cockpit courtesy lights• GFI protected 110V circuits• (3) windshield wipers with washer system• Compass, illuminated• Running lights

Electronics

• RAYMARINE C140 Displays• RAYSTAR 125 GPS SENSOR• RAYMARINE 24" RADOME ANTENNA• ICOM VHF Remote Mic• KVH M1 SATELLITE TV W/(2) RECEIVERS• RAYMARINE ST-70• RAYMARINE ST60 Multi-guage• FLIR FIXED

Upgrades

• Grey water tank indicator• Fresh water tank indicator• Rear bimini• Extra prop• Chock system for Zodiac tender with 9.9HP

Exclusions

All personal property is excluded unless specifically identified and included in the sale agreement and listing specifications. Personal property refers to all items not permanently attached to the vessel including but not limited to artwork, furnishings, and recreational or entertainment items. Advertisements, marketing materials, and/or other photography may depict the vessel with personal property, however, such personal property is excluded unless otherwise specifically included as provided herein.

Исключения

При продаже яхты исключаются личные вещи владельца.

Отказ от ответственности

Компания предоставляет описание судна или яхты добросовестно, но не может гарантировать точность этой информации, а также не ручается за техническое состояние. Покупатель должен проинструктировать своих агентов или оценщиков исследовать представленную информацию более подробно, по собственному желанию. Продажа судна или яхты, изменение цены или снятие с продажи будет происходить без предварительного уведомления.

ФОТОГРАФИИ

Salon



Salon



Salon



Helm



Helm



Galley



Galley



Galley



Master Stateroom



Master Stateroom



Master Stateroom



Master Stateroom



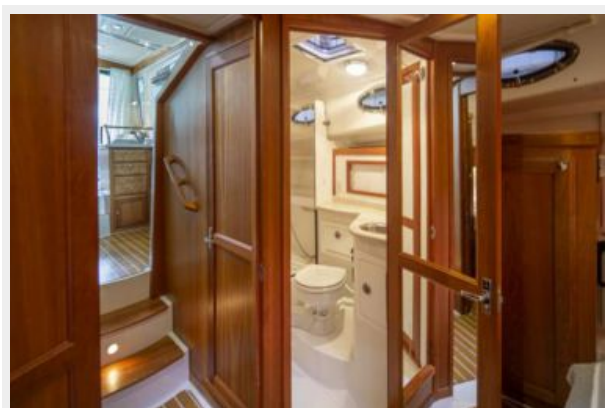
Guest Stateroom



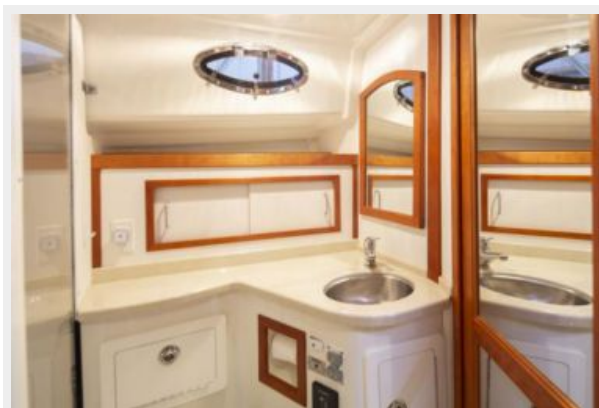
Guest Stateroom



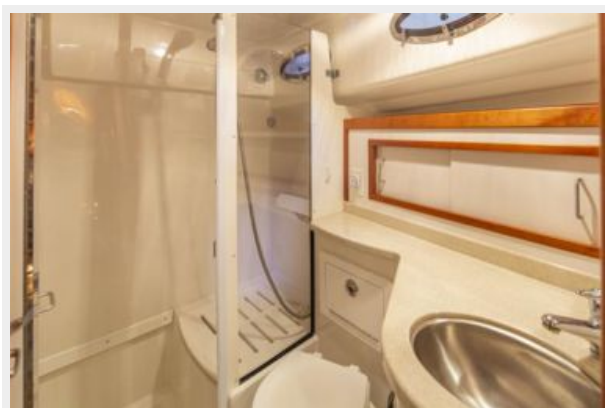
Head



Head



Head



Head



Aft Deck



Aft Deck



Aft Deck



Bow



Engine Area



025 Adventurus



Running



Running



Running



КОНТАКТЫ

Андрей Шестаков (Andrey Shestakov) – ведущий яхтенный брокер отдела продаж яхт и судов компании Shestakov Yacht Sales Inc. Официальный представитель Shestakov Yacht Sales Inc. для русскоговорящих клиентов в центральном офисе компании в Майами/Форт Лодердейл/Флорида/США.

Контактная информация

Email: andrey@shestakovyachtsales.com

Web: shestakovyachtsales.com

Телефоны

Краснодарский край: **+7(918)465-66-44**

США, Майами, Флорида: **+1(954)274-4435**

Время работы

Понедельник – Суббота: **9:00 - 21:00**
EDT

Воскресенье: **Закрито**

Адрес



Harbour Towne Marina, 850 NE 3rd St,
STE 213, Dania, FL 33004