

## SEADUCTION — REGAL



**Судостроитель:** REGAL

**Год постройки:** 1999

**Модель:** Крейсер

**Цена:** ЦЕНА ЯХТЫ ПО ЗАПРОСУ

**Местонахождение:** United States

**Длина общая:** 42' 0" (12.80m)

**Ширина:** 13' 1" (3.99m)

**Мин. осадка:** 2' 11" (0.89m)

**Макс. осадка:** 3' 1" (0.94m)

**Крейс. скорость:** 23 Kts. (26 MPH)

**Макс. скорость:** 30 Kts. (35 MPH)

Купить **Seaduction — REGAL** а также выбрать подходящую вам яхту из нашего каталога яхт вам поможет опытный яхтенный брокер Андрей Шестаков. На сегодняшний день компания **Shestakov Yacht Sales Inc.** имеет большое количество яхт в собственном списке продаж, а также тесно сотрудничает со всеми крупными яхтенными производителями по всему миру.

Для того чтобы купить яхту **Seaduction — REGAL** а также проконсультироваться по любому вопросу связанному с покупкой, продажей, чартером яхт позвоните по телефону **+7(918)465-66-44**.

# ОГЛАВЛЕНИЕ

---

ОГЛАВЛЕНИЕ	2
ХАРАКТЕРИСТИКИ	5
Основная информация	5
Размеры	5
Скорость, вместимость и масса	5
Размещение	5
Корпус и палуба	5
Информация о двигателе	6
ПОДРОБНОЕ ОПИСАНИЕ	7
Overview	7
Salon	7
Galley	7
Forward Cabin	7
Head	8
Mid Cabin	8
Helm Area	8
Aft Deck Area	9
Bow	9
Engine Room	9
Electrical	9
Remarks	9
Notes	10
Exclusions	10
Disclaimer	10
Исключения	10
Отказ от ответственности	10
ФОТОГРАФИИ	11
Salon	11

Salon looking fwd	11
Galley	11
Galley	11
Galley	12
Master Looking Forward	12
Head	12
Master Aft	12
Shower	13
Mid Cabin	13
Helm	13
Engine Gauges	13
Digital Engine Monitor	13
GPS plus Autopilot	13
Radar	14
Portside Companion Seating	14
Bar Area	14
Starboard Side	14
Aft Starboard Corner	14
Aft Port Corner	14
Sun Bed	15
Sun Bed	15
New Speaker	15
Transom	15
Bow Pulpit	15
Bow Area	15
Bow Seat with Backrests Up	16
Engine Room	16
Port Engine	16
Starboard Engine	16

---

Recent Yard Visit	16
Generator	16
Yard May 20	17
Yard May 20	17
Alternate Profile	17
Bow Quarter	17
Bow	17
Bow Quarter	17
Alternate Profile	18
Alternate Profile	18
КОНТАКТЫ	19
Контактная информация	19
Телефоны	19
Время работы	19
Адрес	19

# ХАРАКТЕРИСТИКИ

## Основная информация

Тип судна: Крейсер

Модельный год: 1999

Год постройки: 1999

Страна: United States

Верх: Bimini Top

## Размеры

Длина общая: 42' 0" (12.80m)

Ширина: 13' 1" (3.99m)

Мин. осадка: 2' 11" (0.89m)

Макс. осадка: 3' 1" (0.94m)

## Скорость, вместимость и масса

Крейс. скорость: 23 Kts. (26 MPH)

Макс. скорость: 30 Kts. (35 MPH)

Водоизмещение: 16000 Pounds

Чистый вес: 8 Pounds

Вместимость воды: 125 Gallons

Вместимость сточного бака: 65 Gallons

Объем топливного бака: 265 Gallons

## Размещение

Всего кают: 2

## Корпус и палуба

Материал корпуса: Fiberglass

Комплектация корпуса: Modified V-Hull

## Информация о двигателе

---

**Двигатели:** 2

**Производитель:** Mercruiser

**Модель:** 7.4 MPI

**Тип двигателя:** Inboard

**Тип топлива:** Gas

---

# ПОДРОБНОЕ ОПИСАНИЕ

---

## Overview

---

SEADUCTION is a reasonably priced example of a Regal 402 Commodore.

She has the typical Express Cruiser layout with a forward and mid cabin and a large helm and Aft Deck/Cockpit area.

Being a 1999, the last year of production for the 402, she has a lower profile radar arch, side exhaust and a cherry wood interior.

## Salon

---

Down four steps from the midship sliding door entrance is the Salon area. The sole is carpeted. Overhead is large deck hatch.

To port is the enclosed Head, forward is the Galley, aft is the Mid Cabin.

The Salon has an L shaped settee facing aft and inboard to seat four. A cherry table with a fixed pedestal lies in front. The table is removable and two portable benches convert this area to sleep two. There is storage under the settee.

Above are three hinged storage cabinets with the center cabinet housing the boat's electrical panel.

All lights are LED. AC controls are digital.

The entertainment system is a Kenwood mini stack three disc CD player and AM/FM receiver with Bluetooth. Speakers are Bose mini cubes. The TV, mounted in the entrance to the Mid Cabin, is an Insignio 32" LED TV.

## Galley

---

The Galley is forward to port in the Salon. Features include:

Under mount stainless steel sink  
Corian countertop  
Under counter lighting  
Two burner Princess cooktop under Corian cover  
Sunbeam microwave (new 2018)  
(4) Storage cabinets, (2) small drawers within  
Norcold refrigerator freezer (new 2018)

## Forward Cabin

---

Master Cabin is forward behind a sliding two panel door. The raised queen size berth is forward

and to port. Below the berth are two large drawers and two steps to make access easier.

Outboard and aft is a small storage cabinet and cedar lined hanging locker with an auto light. To port is a two shelf storage locker, a drawer and a small seat.

Also in this cabin is a large overhead hatch for ventilation and emergency escape, LED overhead lights, a digital AC control, a carpeted sole and a CO monitor.

A newer Samsung 22" LED TV is on the aft bulkhead.

---

## Head

---

Located aft to port the Head has the following features: Corian countertops Stainless under mount sink w/stainless faucet Mirrored medicine cabinet w/storage behind (2) Storage cabinets under counter (2) Outboard storage compartments Stainless porthole Hunter Douglass shade for privacy Vacuflush head Tinted Lexan shower partition w/sliding Lexan door Stainless shower head Molded fiberglass liner w/tile sole (4) Overhead lights LED Tank level gauge Air conditioning vent Entry door has a full size dressing mirror on the interior side

---

## Mid Cabin

---

The Mid Cabin has folding accordion shade for privacy.

The area has a U shaped settee that converts to sleep two. A small opening window faces the Cockpit under the helm.

A half height hanging locker is outboard.

---

## Helm Area

---

Double helm seat reupholstered 2016 Wood & leather steering wheel Teleflex separate clutch & throttle controls Ignition key switches Battery parallel switch 12 Volt accessory outlet Faria analog engine gauges Faria analog engine synchronizer Digital depth gauge (2) Fuel tank gauges Trim tab controls Ritchie 4" compass Raytheon Ray 210 VHF Raytheon RN 300 GPS Raytheon ST 6001+ autopilot Raytheon RCL-70 48 mile radar Remote control spotlight Windlass controls at helm Air conditioning outlet at helm w/blower Folding drink holder (2) Windshield wipers Center opening windshield panel Stainless steel windshield frame 5 Piece clear vinyl connector between windshield & Bimini (front needs replacement) Globe box & chart holder portside Storage under helm & companion seats B&G digital engine monitor, temp, RPM, etc. Portside double helm seat reupholstered 2016



## Aft Deck Area

---

5 Person aft vinyl seating replaced 2016 Table w/filler cushion converts to seating or sun bed(4) Stainless cup holders(2) New Fusion Audio stereo speakers(2) Stainless grab rails Bar w/Corian countertops & (2) storage compartments Under mount sink w/stainless faucet Bimini top forward & aft of the forward facing radar arch Molded fiberglass entry step Removable cooler w/cushion to starboard Vinyl coaming bolsters(3) Courtesy lights Vinyl carpet alternative Transom shower(4) Stainless cleats(3) Stainless grab rails at transom(2) Large transom storage trunks(2) Courtesy transom lights Shore power compartment for (2) 30 amp 110V shore cords(2) Nonskid molded fiberglass steps Fiberglass nonskid swim platform(4) LED arch lights

## Bow

---

Lofrans 12 volt windlass Up & down foot switches for windlass Pulpit w/anchor roller w/Danforth anchor & chain(2) Stainless cleats Searchlight, remote control Nav lights Fiberglass nonskid decks Bomar hatch to Master 3 Person bow sun cushions w/adjustable backrests (4) Cup holders near sun pad Taylor made opening hatch w/sun cover over Salon

## Engine Room

---

(2) 454 7.4 MPI 330 HP Mercury gas engines w/V drives Starboard engine new long block, 2 year warranty installed, May 2020 Port engine long block 500 hours ago(4) New risers Coolant recovery bottles, both engines(3) Fuel shutoff valves Generator fuel filter 3 x 6 Hinged engine hatch on gas shocks from Cockpit New props 2018 New Salon AC unit 2015 Engine fire suppression system

## Electrical

---

12 Volt DC system 110 Volt AC system(2) Deep cycles for house, new 2020(3) Starting batteries port, starboard, gen Portable Pro Mariner Pro Sport gen battery charger Pro Nautic 50 amp 12 volt charger for house & engine batteries, new 2015 1709 Gen hours Sea Charger 10 amp batt charger Westerbeke 7.5 KW gas generator 1709 hours, new 2015(2) 30 Amp 110V cord inlets & cord(3) Battery shutoff switches 3000 Watt inverter system, new 2015 Battery isolator

Main panel with: 12 Volt analog meter 12 Volt analog amp meter 120 Volt analog voltmeter 120 Volt analog amp meter 120 Volt generator & transfer breaker(10) 120 Volt breaker protected circuits(13) 120 Volt breaker protected circuits Generator/start/stop switches

## Remarks

---

SEADUCTION is for sale by an owner who just purchased a larger boat. Used as a part time

liveaboard the boat offers great spaces for a 40' Express Cruiser.

---

## Notes

---

Port engine new in 2015 less than 500 hrs. Starboard engine new in 2020, less than 10 hours w/warranty.

Solid fiberglass bottomCored hull sidesModified deep V hullHull length 39' 5"

---

## Exclusions

---

While every effort was made to list all pertinent included equipment aboard SEADUCTION, there are some personal belongings aboard. Prospective purchasers should assume any item not specifically mentioned herein will not convey at closing.

---

## Disclaimer

---

The Company offers the details of this vessel in good faith but cannot guarantee or warrant the accuracy of this information nor warrant the condition of the vessel. A buyer should instruct his agents, or his surveyors, to investigate such details as the buyer desires validated. This vessel is offered subject to prior sale, price change, or withdrawal without notice.

---

## Исключения

---

При продаже яхты исключаются личные вещи владельца.

---

## Отказ от ответственности

---

Компания предоставляет описание судна или яхты добросовестно, но не может гарантировать точность этой информации, а также не ручается за техническое состояние. Покупатель должен проинструктировать своих агентов или оценщиков исследовать представленную информацию более подробно, по собственному желанию. Продажа судна или яхты, изменение цены или снятие с продажи будет происходить без предварительного уведомления.

# ФОТОГРАФИИ

Salon



Salon looking fwd



Galley



Galley



**Galley**



**Master Looking Forward**



**Head**



**Master Aft**



**Shower**



**Mid Cabin**



**Helm**



**Engine Gauges**



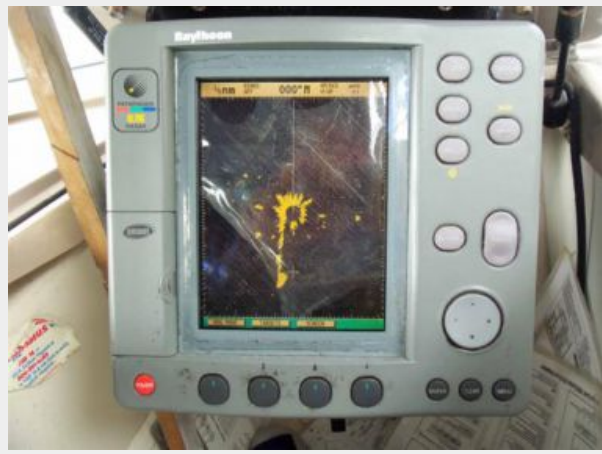
**Digital Engine Monitor**



**GPS plus Autopilot**



**Radar**



**Portside Companion Seating**



**Bar Area**



**Starboard Side**



**Aft Starboard Corner**



**Aft Port Corner**



**Sun Bed**



**Sun Bed**



**New Speaker**



**Transom**



**Bow Pulpit**



**Bow Area**



**Bow Seat with Backrests Up**



**Engine Room**



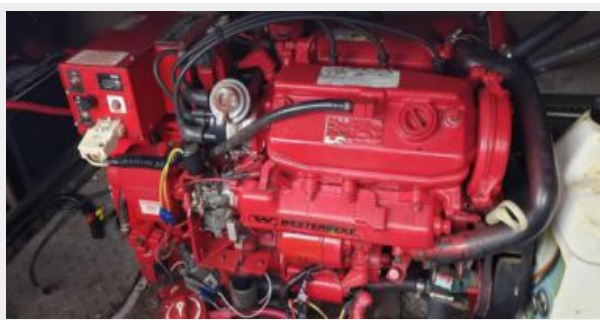
**Port Engine**



**Starboard Engine**



**Generator**



**Recent Yard Visit**





**Yard May 20**



**Yard May 20**



**Alternate Profile**



**Bow Quarter**



**Bow**



**Bow Quarter**



**Alternate Profile**



**Alternate Profile**



# КОНТАКТЫ

---

Андрей Шестаков (Andrey Shestakov) – ведущий яхтенный брокер отдела продаж яхт и судов компании Shestakov Yacht Sales Inc. Официальный представитель Shestakov Yacht Sales Inc. для русскоговорящих клиентов в центральном офисе компании в Майами/Форт Лодердейл/Флорида/США.

## Контактная информация

---

Email: [andrey@shestakovyachtsales.com](mailto:andrey@shestakovyachtsales.com)

Web: [shestakovyachtsales.com](http://shestakovyachtsales.com)

## Телефоны

---

Краснодарский край: **+7(918)465-66-44**

США, Майами, Флорида: **+1(954)274-4435**

## Время работы

---

Понедельник – Суббота: **9:00 - 21:00**  
EDT

Воскресенье: **Закрето**

## Адрес

---



Harbour Towne Marina, 850 NE 3rd St,  
STE 213, Dania, FL 33004