

## NANSEA — GRAND BANKS



**Builder:** GRAND BANKS

**LOA:** 42' 0" (12.80m)

**Year Built:** 1998

**Cruise Speed:** 10 Kts. (12 MPH)

**Model:** SHELBY

**Price:** PRICE ON APPLICATION

**Location:** United States

Our experienced yacht broker, Andrey Shestakov, will help you choose and buy a yacht that best suits your needs **Nansea — GRAND BANKS** from our catalogue. Presently, at Shestakov Yacht Sales Inc., we have a wide variety of yachts available on our sale's list. We also work in close contact with all the big yacht manufacturers from all over the world.

If you would like to buy a yacht **Nansea — GRAND BANKS** or would like help answering any questions concerning purchasing, selling or chartering a yacht, please call **+1(954)274-4435**

# TABLE OF CONTENTS

TABLE OF CONTENTS	2
SPECIFICATIONS	8
Basic Information	8
Dimensions	8
Speed, Capacities and Weight	8
Accommodations	8
Hull and Deck Information	8
Engine Information	8
DETAILED INFORMATION	9
Accommodations	9
Galley	9
Electronics	9
Deck	9
Engine Room	10
Exclusions	10
Disclaimer	10
PHOTOS	11
IMG_8600	11
IMG_8584	11
IMG_8599	11
IMG_8604	11
IMG_8582	11
IMG_8605	11
IMG_8606	12
IMG_8607	12
IMG_8609	12
IMG_8610	12
IMG_8611	12

IMG_8613	12
IMG_8614	13
IMG_8615	13
IMG_8617	13
IMG_8618	13
IMG_8619	13
IMG_8623	13
IMG_8630	14
IMG_8636	14
IMG_8637	14
IMG_8638	14
IMG_8639	14
IMG_8640	14
IMG_8645	15
IMG_8646	15
IMG_8648	15
IMG_8649	15
IMG_8655	15
IMG_8656	15
IMG_8657	16
IMG_8662	16
IMG_8663	16
IMG_8665	16
IMG_8666	16
IMG_8667	16
IMG_8668	17
IMG_8669	17
IMG_8673	17
IMG_8674	17

---

IMG_8675	17
IMG_8676	17
IMG_8677	18
IMG_8678	18
IMG_8680	18
IMG_8681	18
IMG_8682	18
IMG_8587	18
IMG_8683	19
IMG_8685	19
IMG_8686	19
IMG_8687	19
IMG_8689	19
IMG_8690	19
IMG_8692	20
IMG_8694	20
IMG_8696	20
IMG_8697	20
IMG_8698	20
IMG_8699	20
IMG_8700	21
IMG_8579	21
IMG_8584	21
IMG_8587	21
IMG_8599	21
IMG_8600	21
IMG_8604	22
IMG_8605	22
IMG_8606	22

---

---

IMG_8607	22
IMG_8609	22
IMG_8610	22
IMG_8611	23
IMG_8613	23
IMG_8614	23
IMG_8615	23
IMG_8617	23
IMG_8618	23
IMG_8619	24
IMG_8623	24
IMG_8630	24
IMG_8636	24
IMG_8637	24
IMG_8638	24
IMG_8639	25
IMG_8640	25
IMG_8645	25
IMG_8646	25
IMG_8648	25
IMG_8649	25
IMG_8655	26
IMG_8656	26
IMG_8657	26
IMG_8662	26
IMG_8663	26
IMG_8665	26
IMG_8666	27
IMG_8667	27

---

---

IMG_8668	27
IMG_8669	27
IMG_8673	27
IMG_8674	27
IMG_8675	28
IMG_8676	28
IMG_8677	28
IMG_8678	28
IMG_8680	28
IMG_8681	28
IMG_8682	29
IMG_8683	29
IMG_8685	29
IMG_8686	29
IMG_8687	29
IMG_8689	29
IMG_8690	30
IMG_8692	30
IMG_8694	30
IMG_8696	30
IMG_8697	30
IMG_8698	30
IMG_8579	31
IMG_8699	31
IMG_8700	31
CONTACTS	32
Contact details	32
Telephones	32
Office hours	32

---

---

Address

32

---

# SPECIFICATIONS

---

## Basic Information

---

**Category:** SHELBY

**Sub Category:** Aft Cabin

**Model Year:** 1989

**Year Built:** 1998

**Country:** United States

**Fly Bridge:** Yes

## Dimensions

---

**LOA:** 42' 0" (12.80m)

## Speed, Capacities and Weight

---

**Cruise Speed:** 10 Kts. (12 MPH)

**Displacement:** 34914 Pounds

**Water Capacity:** 150 Gallons

**Fuel Capacity:** 600 Gallons

## Accommodations

---

**Total Cabins:** 2

## Hull and Deck Information

---

**Hull Material:** Fiberglass

**Deck Material:** Teak

**Hull Configuration:** Semi-Displacement

**Hull Color:** White

**Hull Designer:** Grand Banks

## Engine Information

---

**Engines:** 1

**Manufacturer:** Cummins



---

# DETAILED INFORMATION

---

## Accommodations

---

Forward V-berth with insert to make a double V. Hanging locker to starboard and 6 drawers to port. 6 more drawers under V. Cable TV hookup, 2 speakers, 2 reading lights (brass), AC control, 110 outlet, vent hatch with bug screen, 2 sliding windows with screens, shelf storage with fiddles, half mirror on door, teak parquet sole throughout the boat.

Guest head just aft to starboard with Groco manual head, full size sink and solid surface counter top, mirror, 2 sliding windows with screens, deck vent hatch with screen, storage above and below counter, SEPARATE shower with teak grate.

Galley across from guest head

The spacious salon is 4 steps up from the galley. Lower helm to starboard with hinged door just aft. Dry bar with ice maker. L shaped settee and removable teak drop leaf table and 2 chairs. Storage in table. Large sliding windows with screens port and starboard. Centerline grab rail overhead, privacy curtains.

Master aft with real queen berth, 6 sliding windows. Hanging locker and 10 drawers, large chart drawer under bed, separate shower to starboard and head to port with Atlantis home size electric toilet. Head also has famous Grand Banks storage, solid surface counter top and sink.

## Galley

---

Galley down. Single stainless sink, microwave, 3 burner Princess stove top and conventional oven. Toaster oven. Famous Grand Banks storage. Vent hatch with screen. New cold Plate Refrigeration.

## Electronics

---

Upper Station: Furuno 48 mile radar. GPS, depth finder, trim tabs, spot control, Auto Pilot, VHF, hailer, intercom system, Glendenning mechanical synchronizer, 12 volt accessory outlet, 2 110 outlets with GFCI protection.

Lower Station: Depth Sounder, VHF radio, Rayline, spotlight, Glendenning synch, tabs, 12 volt accessory outlet, Heart 2800 watt inverter, Wind Speed Indicator.

## Deck

---

Roskelley/Olsson RS-1 electric Transom Fork Davit (1000 lb). Teak Decks, teak table on bridge,

bridge seating for 9 and the motor yacht aft deck with ample room for deck furniture. Electronics mast with steady sail boom (No Sail). Lofrans Tigress electric chain and rope windlass. Danforth and 45 lb CQR anchors, CQR with chain rode and Danforth with rope rode. Storage box forward, 3 deck vent hatches with covers and screens. Single trumpet whistle, phone and TV hookups, name boards, burgee mast, bow pulpit, fenders, lines, & life jackets, windshield wipers and washers.

2002 Zodiac Projet 350 Dinghy excluded

---

## Engine Room

---

Auto Halon fire extinguishing system, Dual Racor fuel filters for each motor, mechanical engine room oil pressure and water temp gauges, sea strainers, manual and automatic bilge pumps, 110 outlets in engine room, oil change system, Fuel selector valves for engines and generator, dual in-line fresh water pumps, twin disc MG 506-1 marine gears, 3 zone air conditioning, Racor crankcase vent filters. Bilge Heater, Gulf Coast Oil Filtration System. Onan 8kw Generator with 2000 hours

The port engine hour meter shows 3908 hours and the starboard shows 3247 hours. It was reported by the owner that the key was left on the port engine accounting for the difference in hours.

---

## Exclusions

---

Owner's personal belongings.

---

## Disclaimer

---

The Company offers the details of this vessel or yacht in good faith but cannot guarantee or warrant the accuracy of this information nor warrant the condition of the vessel. A buyer should instruct his representatives, agents, or his surveyors, to investigate such details as the buyer desires validated. This vessel or yacht is offered subject to prior sale, price change, or withdrawal without notice.

# PHOTOS

IMG\_8600



IMG\_8584



IMG\_8599



IMG\_8604



IMG\_8582



IMG\_8605



IMG\_8606



IMG\_8607



IMG\_8609



IMG\_8610



IMG\_8611



IMG\_8613



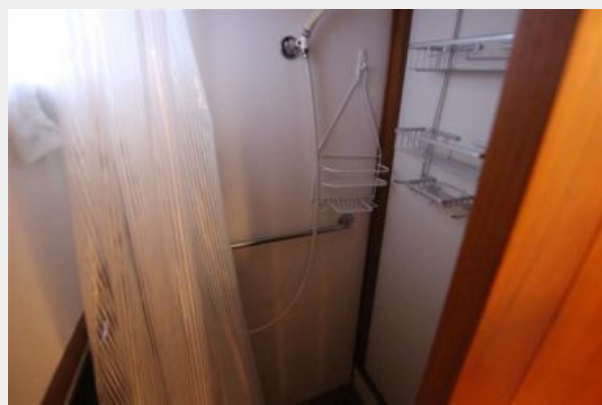
IMG\_8614



IMG\_8615



IMG\_8617



IMG\_8618



IMG\_8619



IMG\_8623



IMG\_8630



IMG\_8636



IMG\_8637



IMG\_8638



IMG\_8639



IMG\_8640



IMG\_8645



IMG\_8646



IMG\_8648



IMG\_8649



IMG\_8655



IMG\_8656



IMG\_8657



IMG\_8662



IMG\_8663



IMG\_8665



IMG\_8666



IMG\_8667

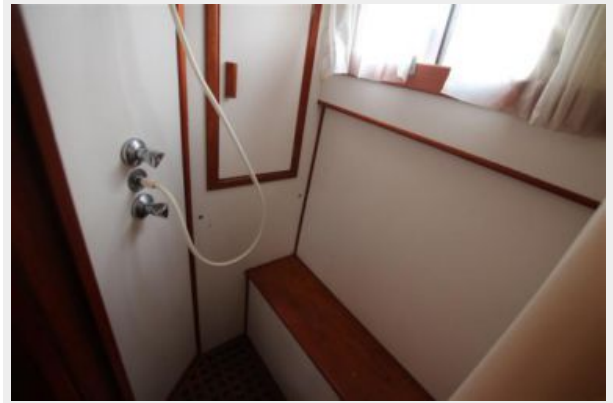




IMG\_8668



IMG\_8669



IMG\_8673



IMG\_8674



IMG\_8675



IMG\_8676



IMG\_8677



IMG\_8678



IMG\_8680



IMG\_8681



IMG\_8682



IMG\_8587



IMG\_8683



IMG\_8685



IMG\_8686



IMG\_8687



IMG\_8689



IMG\_8690



IMG\_8692



IMG\_8694



IMG\_8696



IMG\_8697



IMG\_8698



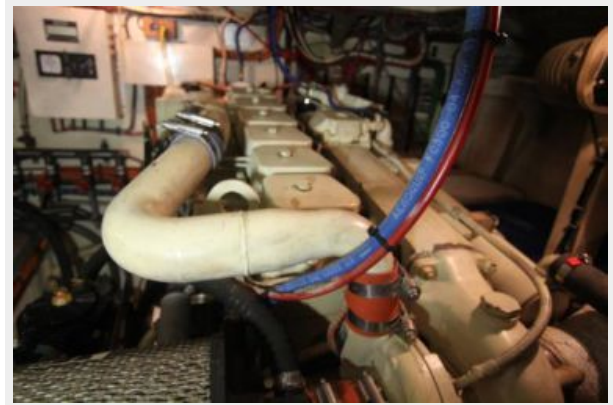
IMG\_8699



IMG\_8700



IMG\_8579



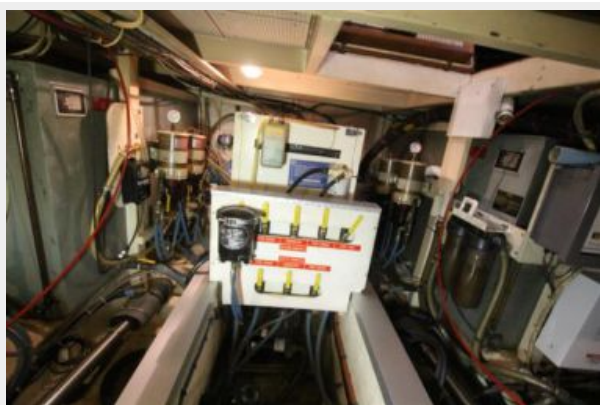
IMG\_8584



IMG\_8587



IMG\_8599



IMG\_8600



IMG\_8604



IMG\_8605



IMG\_8606



IMG\_8607



IMG\_8609



IMG\_8610



IMG\_8611



IMG\_8613



IMG\_8614



IMG\_8615



IMG\_8617



IMG\_8618



IMG\_8619



IMG\_8623



IMG\_8630



IMG\_8636



IMG\_8637



IMG\_8638





IMG\_8639



IMG\_8640



IMG\_8645



IMG\_8646



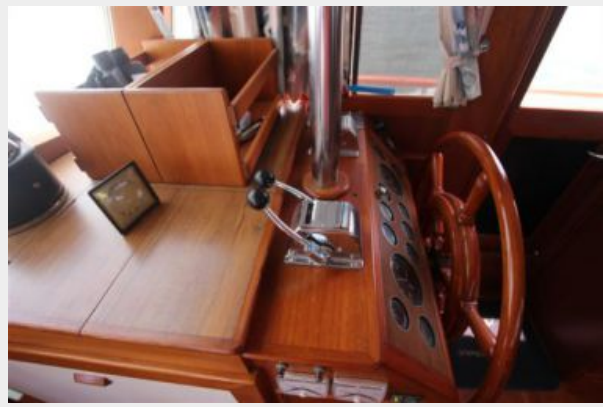
IMG\_8648



IMG\_8649



IMG\_8655



IMG\_8656



IMG\_8657



IMG\_8662



IMG\_8663



IMG\_8665



IMG\_8666



IMG\_8667



IMG\_8668



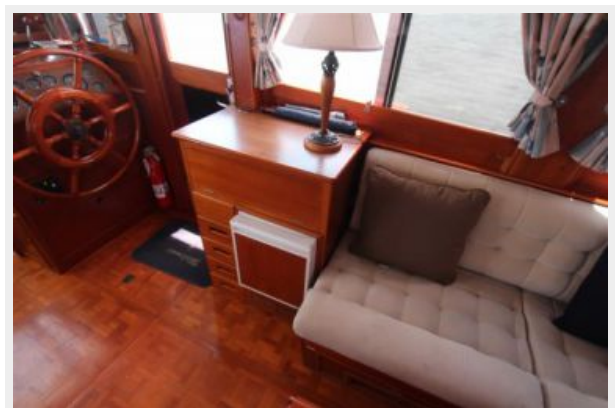
IMG\_8669



IMG\_8673



IMG\_8674



IMG\_8675



IMG\_8676



IMG\_8677



IMG\_8678



IMG\_8680



IMG\_8681



IMG\_8682



IMG\_8683



IMG\_8685



IMG\_8686



IMG\_8687



IMG\_8689



IMG\_8690



IMG\_8692



IMG\_8694



IMG\_8696



IMG\_8697



IMG\_8698



IMG\_8579



IMG\_8699



IMG\_8700



# CONTACTS

---

Andrey Shestakov, leading yacht broker of the sales department of Shestakov Yacht Sales Inc. Shestakov Yacht Sales Inc., the official representative of the Miami/Fort Lauderdale FL headquarters.

## Contact details

---

Email: [andrey@shestakovyachtsales.com](mailto:andrey@shestakovyachtsales.com)

Web: [shestakovyachtsales.com/en/](http://shestakovyachtsales.com/en/)

## Telephones

---

USA: +1(954)274-4435

## Office hours

---

Monday – Saturday: 9:00 - 21:00 EDT

Sunday: **closed**

## Address

---



Harbour Towne Marina, 850 NE 3rd St,  
STE 213, Dania, FL 33004