

## ALDEBARAN — CAL



**Builder:** CAL

**Year Built:** 1980

**Model:** Cruising/Racing Sailboat

**Price:** PRICE ON APPLICATION

**Location:** United States

**LOA:** 39' 0" (11.89m)

**Beam:** 12' 0" (3.66m)

**Max Draft:** 6' 10" (2.08m)

**Cruise Speed:** 7 Kts. (8 MPH)

**Max Speed:** 8 Kts. (9 MPH)

Our experienced yacht broker, Andrey Shestakov, will help you choose and buy a yacht that best suits your needs **Aldebaran — CAL** from our catalogue. Presently, at Shestakov Yacht Sales Inc., we have a wide variety of yachts available on our sale's list. We also work in close contact with all the big yacht manufacturers from all over the world.

If you would like to buy a yacht **Aldebaran — CAL** or would like help answering any questions concerning purchasing, selling or chartering a yacht, please call **+1(954)274-4435**

# TABLE OF CONTENTS

TABLE OF CONTENTS	2
SPECIFICATIONS	4
Overview	4
Basic Information	4
Dimensions	4
Speed, Capacities and Weight	4
Accommodations	4
Hull and Deck Information	5
Engine Information	5
DETAILED INFORMATION	6
Overview	6
Exclusions	8
Disclaimer	8
PHOTOS	9
DODGER,BIMINI AND CONNECTOR	9
COCKPIT LOOKING FORWARD	9
COCKPIT LOOKING AFT	9
MAIN CABIN TABLE AT HALF	9
MAIN CABIN TABLE OPEN	9
GALLEY AREA	9
GALLEY CLOSE UP	10
HEAD WITH VANITY AND SHOWER	10
FWD STATEROOM LARGE V BERTH	10
BUREAU LOOKING AFT IN V BERTH	10
QUARTERBERTH	11
NAV STATION	11
CONTACTS	12
Contact details	12

---

Telephones	12
Office hours	12
Address	12

---

# SPECIFICATIONS

---

## Overview

---

ALDEBARAN is a powerful racer cruiser that will carry you and your crew in style with amazing performance any where you want to go and .As you will see when you board her she has been well maintained by a knowledgeable and caring owner.

## Basic Information

---

**Category:** Cruising/Racing Sailboat

**Model Year:** 1980

**Year Built:** 1980

**Country:** United States

## Dimensions

---

**LOA:** 39' 0" (11.89m)

**Beam:** 12' 0" (3.66m)

**Max Draft:** 6' 10" (2.08m)

**Clearance:** 54' 0" (16.46m)

**MFG Length:** 39' 0" (11.89m)

## Speed, Capacities and Weight

---

**Cruise Speed:** 7 Kts. (8 MPH)

**Max Speed:** 8 Kts. (9 MPH)

**Displacement:** 18000 Pounds

**Water Capacity:** 100 Gallons

**Holding Tank:** 1 Gallons

**Fuel Capacity:** 52 Gallons

## Accommodations

---

**Total Cabins:** 2

**Total Berths:** 6

**Total Heads:** 1

---

## Hull and Deck Information

---

**Hull Material:** Fiberglass

**Hull Designer:** John Lapworth

---

## Engine Information

---

**Engines:** 1

**Manufacturer:** Perkins

**Model:** Fuel Injected

**Engine Type:** Inboard

**Fuel Type:** Diesel

---

# DETAILED INFORMATION

---

## Overview

---

### Accommodations & Layout

Classic layout with recently replaced teak and holly floors, sleeps 6 in comfort. V berth master stateroom with private entrance into the head( complete with drawers hanging locker and cubbies). Aft quarter berth, port and starboard double settees. Main saloon with large folding table to seat seven.backlit bar with stained glass doors and bank of drawers. Framed pictures on walls.

- 2 large cedar lined hanging lockers
- 2 built -in bookcases
- Large nav. station

### Galley/ head

Full galley with cabinets and 3 burner propane stove, full oven and sink. Hot and cold pressure water in galley and head, large refrigerated ice box with freezer and controls.

- Full bath with electric head
- shower, vanity and lav.
- large medicine chest
- y-valve for either sea, tank or deck

### Electronics and Navigation

Nexus/Silva server system with 5 multi-displays and remote control with display. NEMA serial output for connection into any PC or laptop for info. from server.

- Mcro logic Loran

- binnacle compass
- Standard Horizon VHF w/masthead antenna
- second Datamarine depth sounder
- Garmin GPS connected to server
- Nexus transducers(depth, speed, fluxgate compass, seawater temp.,

## Electrical

new 100 amp. alternator, 4 new batteries, Link 2000 battery management system, 30 amp AC system with 50' shore power cord and new stainless hot water heater 2017, 20 amp. battery charger

## Hull and Deck

Wide companionway stairs, good engine access, full cockpit cushions, suede-covered racing steering wheel, emergency tiller, dodger, bimini fly, , 2 large hatches and 4 side ports. Large lazarette in cockpit. ventilated propane locker and drainable anchor locker forward with 200' of 3/4 " nylon and chain. 35# CQR and all docklines and fenders

## Sails and Rigging

2 150 racing gennys, 1 135 cruising genny, 105% n# 3 jib

- 2 spinnakers
- 2 mains
- spinnaker staysail
- carbon fiber spinnaker pole
- aluminum spinnaker pole
- reaching strut
- new mainsail cover
- 12 oversized Lewmar winches(6 self-tailing)
- new lifelines
- hydraulic backstay adjuster

- adjustable main sheet traveler
- boom vang
- 6-1 mainsheet and a 36-1 main fine tuner
- fully adjustable genoa leads
- Autohelm with remote control
- swim ladder
- life sling
- 2 flag halyards
- double spinnaker halyards
- double genoa wire halyards
- Harkin/ North Unit 2 roller furling with split drum option

## Mechanical

Inventory of spare parts, comprehensive manuals, Cal 39 Performance pkg.

## Comments

Fast, manageable and comfortable. All underwater surfaces are hydrodynamically faired and triple barrier coated with a feathering Maxx Prop. No leaks or never any blisters. Boat is in sail away condition.

## Exclusions

---

Owner's personal belongings.

## Disclaimer

---

The Company offers the details of this vessel or yacht in good faith but cannot guarantee or warrant the accuracy of this information nor warrant the condition of the vessel. A buyer should instruct his representatives, agents, or his surveyors, to investigate such details as the buyer desires validated. This vessel or yacht is offered subject to prior sale, price change, or withdrawal without notice.



# PHOTOS

**DODGER, Bimini AND CONNECTOR**



**COCKPIT LOOKING FORWARD**



**COCKPIT LOOKING AFT**



**MAIN CABIN TABLE AT HALF**



**MAIN CABIN TABLE OPEN**



**GALLEY AREA**



**GALLEY CLOSE UP**



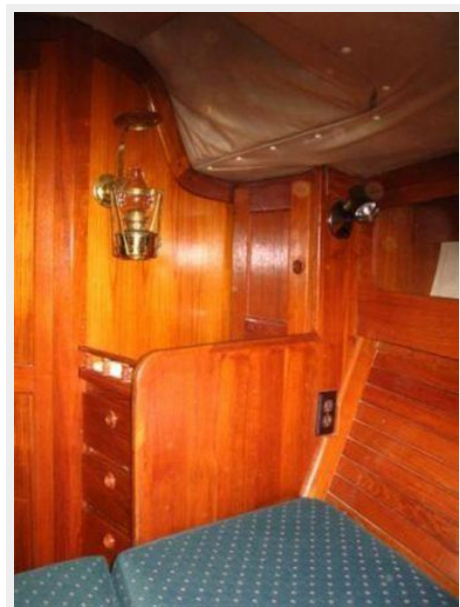
**HEAD WITH VANITY AND SHOWER**



**FWD STATEROOM LARGE V BERTH**



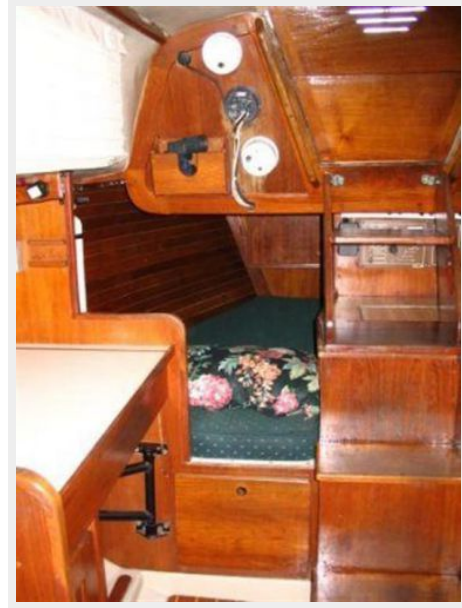
**BUREAU LOOKING AFT IN V BERTH**



### NAV STATION



### QUARTERBERTH





---

# CONTACTS

---

Andrey Shestakov, leading yacht broker of the sales department of Shestakov Yacht Sales Inc. Shestakov Yacht Sales Inc., the official representative of the Miami/Fort Lauderdale FL headquarters.

---

## Contact details

---

Email: [andrey@shestakovyachtsales.com](mailto:andrey@shestakovyachtsales.com)

Web: [shestakovyachtsales.com/en/](http://shestakovyachtsales.com/en/)

---

## Telephones

---

USA: +1(954)274-4435

---

## Office hours

---

Monday – Saturday: **9:00 - 21:00** EDT

Sunday: **closed**

---

## Address

---



Harbour Towne Marina, 850 NE 3rd St,  
STE 213, Dania, FL 33004