

## WAHINE — PEARSON



**Builder:** PEARSON

**Year Built:** 1974

**Model:** Cruising Sailboat

**Price:** PRICE ON APPLICATION

**Location:** United States

**LOA:** 39' 3" (11.96m)

**Beam:** 11' 8" (3.56m)

**Min Draft:** 4' 7" (1.40m)

**Max Draft:** 8' 10" (2.69m)

**Cruise Speed:** 6 Kts. (7 MPH)

Our experienced yacht broker, Andrey Shestakov, will help you choose and buy a yacht that best suits your needs **Wahine — PEARSON** from our catalogue. Presently, at Shestakov Yacht Sales Inc., we have a wide variety of yachts available on our sale's list. We also work in close contact with all the big yacht manufacturers from all over the world.

If you would like to buy a yacht **Wahine — PEARSON** or would like help answering any questions concerning purchasing, selling or chartering a yacht, please call **+1(954)274-4435**

# TABLE OF CONTENTS

TABLE OF CONTENTS	2
SPECIFICATIONS	4
Overview	4
Basic Information	4
Dimensions	4
Speed, Capacities and Weight	4
Accommodations	4
Hull and Deck Information	5
Engine Information	5
DETAILED INFORMATION	6
Overview	6
Exclusions	8
Disclaimer	8
PHOTOS	9
2	9
3	9
4	9
5	9
6	10
7	10
8	10
9	10
10	11
11	11
CONTACTS	12
Contact details	12
Telephones	12
Office hours	12

---

Address

12

---

# SPECIFICATIONS

---

## Overview

---

A wonderful family cruising boat or one to try racing around the buoys at the local yacht club. This one has seen many upgrades over the last several years. She is available to be seen in virtual tours or with following safe social distance protocols here in Sales Tax free RI, call to visit today.

## Basic Information

---

**Category:** Cruising Sailboat

**Model Year:** 1974

**Year Built:** 1974

**Country:** United States

## Dimensions

---

**LOA:** 39' 3" (11.96m)

**LWL:** 30' 0" (9.14m)

**Beam:** 11' 8" (3.56m)

**Min Draft:** 4' 7" (1.40m)

**Max Draft:** 8' 10" (2.69m)

**MFG Length:** 39' 0" (11.89m)

## Speed, Capacities and Weight

---

**Cruise Speed:** 6 Kts. (7 MPH)

**Displacement:** 17000 Pounds

**Water Capacity:** 30 Gallons

**Holding Tank:** 20 Gallons

**Fuel Capacity:** 30 Gallons

## Accommodations

---

**Total Cabins:** 1

**Total Heads:** 1

---

## Hull and Deck Information

---

**Hull Material:** Fiberglass

**Hull Configuration:** Centerboard

**Hull Finish:** Fiberglass

---

## Engine Information

---

**Engines:** 1

**Manufacturer:** westerbeke

**Model:** 42B

**Engine Type:** Inboard

**Fuel Type:** Diesel

---

# DETAILED INFORMATION

---

## Overview

---

### Full Specifications

#### Accommodations;

Starting forward is the V-Berth with filler, outboard shelves, storage drawers underneath and to port and a hanging locker to starboard. Next aft is the enclosed head to port and storage drawers and a hanging locker to starboard. In the salon, there is a convertible settee/double berth to port a fold up dining table and a convertible settee/single berth to starboard with a pilot berth outboard. Next aft to port is the navigation station with quarter berth and to starboard is the U-shaped galley.

There is a teak and holly sole, teak bulkheads and joiner workThe interior cushions were new in 2011 and are Ultra-suede.There are 2 overhead opening hatches and 2 Dorades for ventilation.

There is a Luke Soapstone stove for heat.

#### Galley and Head;

Stainless steel sink, new faucet, 2016Adler Barbour 12vdc refrigeration in ice box, 2012Origo 3000 2 burner alcohol stove, 2019Jabsco manualflush head, 2019Stainless steel water heater, 120vac and heat exchanger, 2019Hot and cold pressure water, new pump 2016Holding tank, pumpout fixture and overboard discharge system

#### Electrical;

1 house and 1 engine start batteries, 201950 watt solar panel, 201530 amp shore power connection with cord120vac Battery chargerBlue Sea DC distribution panel, 2012

#### Electronics and Navigation;

---

B&G 9 inch touchscreen display with GPS plotter, 2019Raymarine ST60 depth sounderRaymarine autopilotStandard Horizon VHF radioRitchie binnacle compass

#### Deck and Hull;

Ideal windlass, rebuilt 2010Delta Fast set anchor, chain and rodeBow pulpit, side stanchions with lifelinesStern pushpitCockpit cushions, 2012Sail cover, 2012Dodger, 2010Lifesling MOB systemBottom blasted and coated, 2012Winter cover, 2014

#### Rigging;

Aluminum mast stepped on keelSingle spreader mast head rigStainless steel wire standing rigging, 2009Mast wiring and conduit, 2012Main sheet traveler, 2009Aluminum boomvang, 2009Spectra lazy jacks, 2011Harken roller furling forestaySpinnaker pole

#### Winches;

Lewmar self tailing primaries, 2013Two speed secondariesLewmar self tailing cabin top, 2013

#### Sail;

Main sail, fully battenedGenoaCruising spinnaker

#### Mechanical Systems;

Freshwater cooling systemPYI Dripless stuffing box, 2015Walter V-drive, rebuilt 20093 blade Max PropEngine room blower, 2016Edson binnacle wheel steering with GPS podElectric manual and automatic bilge pumpManual bilge pump, serviced 2016

### Disclaimer

The Company offers the details of this vessel in good faith but cannot guarantee or warrant the accuracy of this information nor warrant the condition of the vessel. A buyer should instruct his agents, or his surveyors, to investigate such details as the buyer desires validated. This vessel is offered subject to prior sale, price change, or withdrawal without notice.

## Exclusions

---

Owner's personal belongings.

## Disclaimer

---

The Company offers the details of this vessel or yacht in good faith but cannot guarantee or warrant the accuracy of this information nor warrant the condition of the vessel. A buyer should instruct his representatives, agents, or his surveyors, to investigate such details as the buyer desires validated. This vessel or yacht is offered subject to prior sale, price change, or withdrawal without notice.



# PHOTOS

2



3



4



5



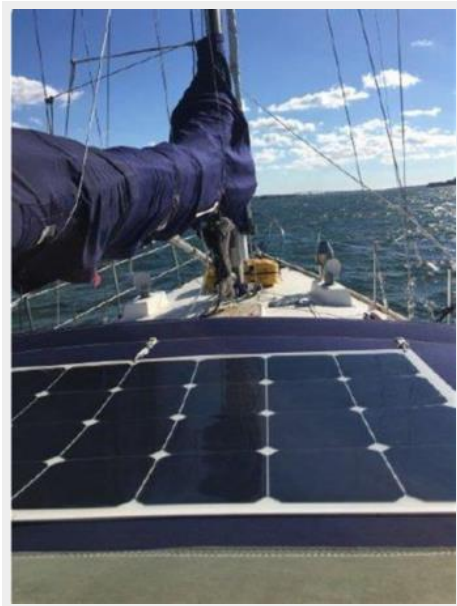
6



7



8



9



10



11



# CONTACTS

---

Andrey Shestakov, leading yacht broker of the sales department of Shestakov Yacht Sales Inc. Shestakov Yacht Sales Inc., the official representative of the Miami/Fort Lauderdale FL headquarters.

## Contact details

---

Email: [andrey@shestakovyachtsales.com](mailto:andrey@shestakovyachtsales.com)

Web: [shestakovyachtsales.com/en/](http://shestakovyachtsales.com/en/)

## Telephones

---

USA: +1(954)274-4435

## Office hours

---

Monday – Saturday: **9:00 - 21:00** EDT

Sunday: **closed**

## Address

---



Harbour Towne Marina, 850 NE 3rd St,  
STE 213, Dania, FL 33004