

PRIME TIME — ENDEAVOUR



Builder: ENDEAVOUR

Year Built: 1997

Model: Catamaran

Price: PRICE ON APPLICATION

Location: United States

LOA: 37' 0" (11.28m)

Beam: 15' 0" (4.57m)

Min Draft: 1' 6" (0.46m)

Max Draft: 2' 10" (0.86m)

Cruise Speed: 8 Kts. (9 MPH)

Max Speed: 15 Kts. (17 MPH)

Our experienced yacht broker, Andrey Shestakov, will help you choose and buy a yacht that best suits your needs **Prime Time — ENDEAVOUR** from our catalogue. Presently, at Shestakov Yacht Sales Inc., we have a wide variety of yachts available on our sale's list. We also work in close contact with all the big yacht manufacturers from all over the world.

If you would like to buy a yacht **Prime Time — ENDEAVOUR** or would like help answering any questions concerning purchasing, selling or chartering a yacht, please call **+1(954)274-4435**

TABLE OF CONTENTS

TABLE OF CONTENTS	2
SPECIFICATIONS	4
Overview	4
Basic Information	4
Dimensions	4
Speed, Capacities and Weight	5
Accommodations	5
Hull and Deck Information	5
Engine Information	5
DETAILED INFORMATION	6
Overview	6
Exclusions	9
Disclaimer	9
PHOTOS	10
2	10
3	10
4	10
5	10
6	11
7	11
8	11
9	11
11	12
10	12
12	12
13	12
14	13
15	13

16	13
17	13
19	14
18	14
20	14
CONTACTS	15
Contact details	15
Telephones	15
Office hours	15
Address	15

SPECIFICATIONS

Overview

"Prime Time" is a very interesting Catamaran. She was originally built by Endeavor as a Victory Cat 35. She has gone through some changes due to a dismasting in the Chesapeake on November 18th, 2011. The starboard spreader broke free at the joint with the mast, causing the mast to break and go over the side. Apparently this was shortly after completing a \$25,000 refit that included the replacement of the running rigging. The owners returned to Solomons for repairs. After an estimate of \$50,000 to return as a sailboat and an estimate of \$100,000 to convert to a power catamaran, a decision was made to convert to power. What was done for this conversion will be explained in more detail further on in the listing. She is owned by her original owner and has proven herself as an offshore cruiser from Maine to Key West, Chesapeake to Bermuda in 57 knot winds and 40' seas, Caribbean from St. Martin to Grenada for 7 years and back thru Puerto Rico, Dominican Republic, Turks & Caicos and Bahamas. She has what is called a "Wave taming bow design" and has a solid foredeck with huge lazarette in lieu of a trampoline. This allows for a ton of storage space not normally available and a nice foredeck to spend time on.

Basic Information

Category: Catamaran

Model Year: 1997

Year Built: 1997

Country: United States

Dimensions

LOA: 37' 0" (11.28m)

Beam: 15' 0" (4.57m)

Min Draft: 1' 6" (0.46m)

Max Draft: 2' 10" (0.86m)

MFG Length: 37' 0" (11.28m)

Speed, Capacities and Weight

Cruise Speed: 8 Kts. (9 MPH)

Max Speed: 15 Kts. (17 MPH)

Water Capacity: 100 Gallons

Holding Tank: 30 Gallons

Fuel Capacity: 135 Gallons

Accommodations

Total Cabins: 3

Total Berths: 3

Total Heads: 2

Hull and Deck Information

Hull Material: Fiberglass

Hull Configuration: Catamaran

Engine Information

Engines: 2

Manufacturer: Honda

Engine Type: Outboard

Fuel Type: Gas

DETAILED INFORMATION

Overview

Accommodations

"Prime Time" has 3 staterooms with 1 full head and an additional vanity. The Main salon is quite commodious with an L-shaped dinette forward to port with 2 square stool under the dinette for additional seating and storage, followed by the steps to the port hull. Aft of the steps is the Navigation station as well as the large double door fridge/freezer. On the starboard side of the salon forward is the entertainment center, next are the steps to the starboard hull, and all the way aft is the U-shaped sea galley. Aft and center is the door to her large cockpit and helm area. The port side hull has a large guest stateroom aft with queen berth, tons of lockers and cabinets, a vanity in the middle with a small locker for cleaning supplies. The linen closet is in the starboard head. The liquor locker is left of the port steps under the Nav. station.that is shared with the forward cabin with a single berth. There is a large foul weather locker and four large drawers i the forward cabin for spares, charts, Clothes, etc.The master suite is the whole starboard hull and is comprised of a large queen berth aft, opening ports, tons of locker space. Going forward is the huge head with vanity, a private head area, and separate shower stall forward. There is access to the foredeck storage space from a hatch in the shower as well as a hatch on deck.Her helm deck is quite large with the helm on the starboard side with wrap around seating and centerline table. She is enclosed with a dodger and bimini.

Galley

She has a U-shaped Sea galley offering plenty of counter and cabinet space for food preparation and storage. She is equipped with;

- 2 burner propane stove with chop block top
- double stainless steel sinks with hot and cold pressure water
- microwave and oven
- Huge over and under refrigerator and freezer
- Full size trash receptacle
- Soda Stream soda maker

Deck Equipment

- Hydraulic steering
- 2 person adjustable helm seat with foot rest
- 8 aluminum opening ports
- 5 aluminum opening hatches with screens
- Stainless steel stanchions
- Molded PVC rub rail
- dinghy davits aft
- Almost new West Marine Dinghy with glass bottom
- 15 HP Yamaha OB
- Lifeline gates port and starboard
- Acrylic companionway door
- Sliding companionway hatch
- Stainless steel anchor roller and cleat
- 2 anchors - Fortress and stainless and chain and rode
- Windlass
- Self-draining foredeck storage lockers
- Cockpit lazarette storage
- Molded non-skid on all deck surfaces
- Canvas dodger
- Canvas bimini
- Cockpit table
- Cockpit cushions
- Cockpit shower

Endeavour was building the Victory Cat and another Cat at the same time. It started at 38' and was extended to 40' and then 42' to prevent squatting under power and hobby horsing in waves. The owner of Prime Time had the unfinished hull trucked south 100 miles to Pine Island where the architect and Owner worked to design and extend the Victory hull 2' for the same reasons and to carry a dinghy. Then the hull went back to Endeavor to be completed. The two hulls are only 36" wide at the waterline leading to a very "Slippery" hull shape. She easily fits into a 16' wide travel lift.

Mechanical, Electrical and Plumbing

- 100 gallon water tank
- 135 gallon fuel in 2 tanks
- 30 gallon holding tank - maybe 20
- 4 batteries
- 110 volt shore power system
- Premier Plus A/C - D/C Electrical Panel

- 30 amp shore power cord with 50 amp converter
- Hot and cold [ressure water system
- Electric water heater
- 12 volt interior and exterior lighting
- 2- 12 volt automatic bilge pumps
- 2- manual bilge pumps
- Fiberglass reinforced Marelon through-hulls and seacocks
- 16K BTU Marine Air conditioning
- Solar trickle charger
- Lots of fans

Engines

- Twin 90 HP four stroke Honda outboard gas engines 2013 (low hours)
- Deluxe engine instrument panels
- Fiberglass rudders with strong rudder bearings and hydraulic steering
- 100 amp alternators
- Engine battery parallel switch
- Stainless steel props with spare pair aluminum props

Electronics

- Garmin GPS map 740
- Raymarine Autopilot
- Raymarine MN 100-2
- Autohelm Tridata - depth, speed, distance
- VHF Radio
- Radar
- Radio
- cockpit speakers
- TV set
- Electronics mast (15' clearance) with radar and wind instrument and VHF Antenna
- Satellite phone
- Sony Am/Fm/CD sound system

Conversion upgrades

- (2) 2013 90HP Honda outboards
- Fiberglass engine mount
- Extra 2' on sterns for flotation and speed
- Electric davits to carry dinghy
- Wood gran and white vinyl on walls in place of carpet
- Teak and holly flooring in place of plywood
- Full size fridge in place of under the counter
- 20 additional shelves, drawers, cupboards, lockers and closets for storage

- Liquor and wine locker, linen closet and trash bin
- SS anchor with SS chain
- Gail rider droque and parachute sea anchor for off shore with 300' 5/8" rode
- New chart plotter and auto pilot
- New 90 gallon fuel tank in addition to original 45 gallon tank
- Custom cockpit table and back rest.

The Conversion from sail to power was done at Washburns Boat Yard and completed at Zahniser's.

Disclaimer

The Company offers the details of this vessel in good faith but cannot guarantee or warrant the accuracy of this information nor warrant the condition of the vessel. A buyer should instruct his agents, or his surveyors, to investigate such details as the buyer desires validated. This vessel is offered subject to prior sale, price change, or withdrawal without notice.

Exclusions

Owner's personal belongings.

Disclaimer

The Company offers the details of this vessel or yacht in good faith but cannot guarantee or warrant the accuracy of this information nor warrant the condition of the vessel. A buyer should instruct his representatives, agents, or his surveyors, to investigate such details as the buyer desires validated. This vessel or yacht is offered subject to prior sale, price change, or withdrawal without notice.

PHOTOS

2



3



4



5



6



7



8



9



10



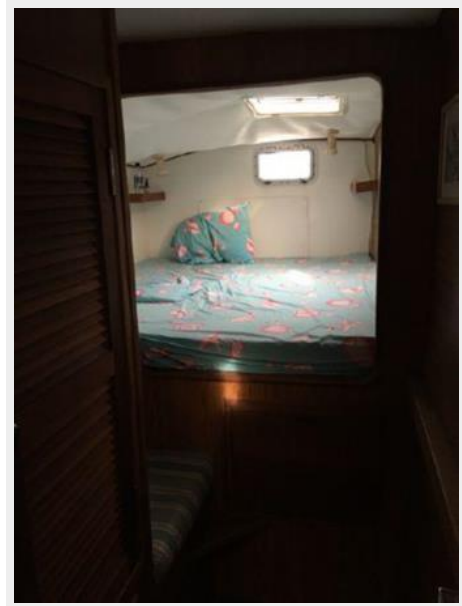
11



12



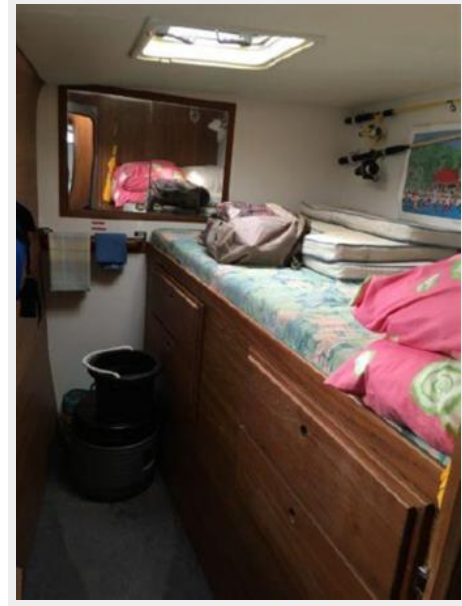
13



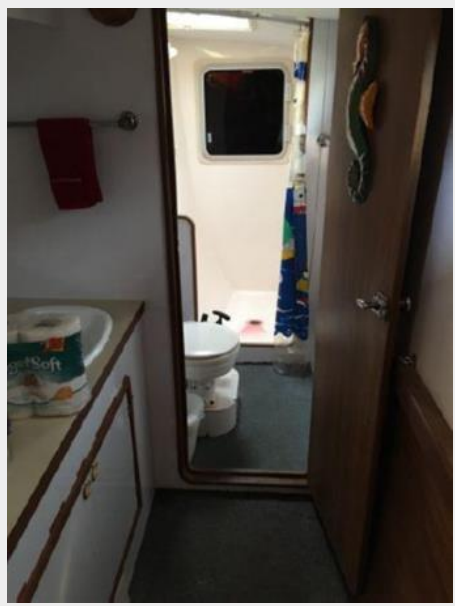
14



15



16



17



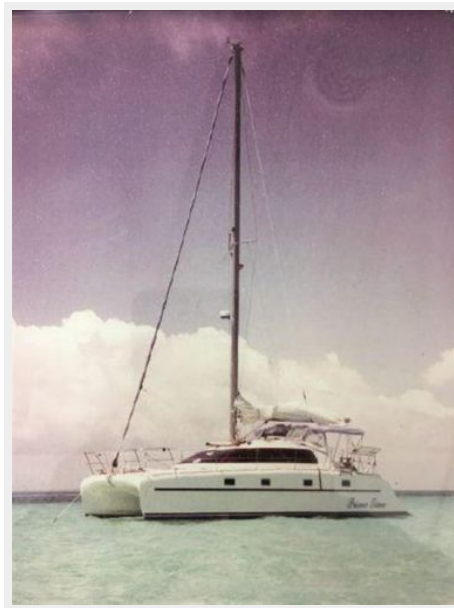
18



19



20



CONTACTS

Andrey Shestakov, leading yacht broker of the sales department of Shestakov Yacht Sales Inc. Shestakov Yacht Sales Inc., the official representative of the Miami/Fort Lauderdale FL headquarters.

Contact details

Email: andrey@shestakovyachtsales.com

Web: shestakovyachtsales.com/en/

Telephones

USA: +1(954)274-4435

Office hours

Monday – Saturday: **9:00 - 21:00** EDT

Sunday: **closed**

Address



Harbour Towne Marina, 850 NE 3rd St,
STE 213, Dania, FL 33004