

## PRIME TIME — ENDEAVOUR



**Судостроитель:** ENDEAVOUR

**Год постройки:** 1997

**Модель:** Катамаран

**Цена:** **ЦЕНА ЯХТЫ ПО ЗАПРОСУ**

**Местонахождение:** United States

**Длина общая:** 37' 0" (11.28m)

**Ширина:** 15' 0" (4.57m)

**Мин. осадка:** 1' 6" (0.46m)

**Макс. осадка:** 2' 10" (0.86m)

**Крейс. скорость:** 8 Kts. (9 MPH)

**Макс. скорость:** 15 Kts. (17 MPH)

Купить Prime Time — ENDEAVOUR а также выбрать подходящую вам яхту из нашего каталога яхт вам поможет опытный яхтенный брокер Андрей Шестаков. На сегодняшний день компания Shestakov Yacht Sales Inc. имеет большое количество яхт в собственном списке продаж, а также тесно сотрудничает со всеми крупными яхтенными производителями по всему миру.

Для того чтобы купить яхту Prime Time — ENDEAVOUR а также проконсультироваться по любому вопросу связанному с покупкой, продажей, чартером яхт позвоните по телефону **+7(918)465-66-44**.

# ОГЛАВЛЕНИЕ

ОГЛАВЛЕНИЕ	2
ХАРАКТЕРИСТИКИ	4
Обзор	4
Основная информация	4
Размеры	4
Скорость, вместимость и масса	5
Размещение	5
Корпус и палуба	5
Информация о двигателе	5
ПОДРОБНОЕ ОПИСАНИЕ	6
Overview	6
Исключения	9
Отказ от ответственности	9
ФОТОГРАФИИ	10
2	10
3	10
4	10
5	10
6	11
7	11
8	11
9	11
11	12
10	12
12	12
13	12
14	13
15	13

---

16	13
17	13
19	14
18	14
20	14
КОНТАКТЫ	15
Контактная информация	15
Телефоны	15
Время работы	15
Адрес	15

# ХАРАКТЕРИСТИКИ

## Обзор

"Prime Time" is a very interesting Catamaran. She was originally built by Endeavor as a Victory Cat 35. She has gone through some changes due to a dismasting in the Chesapeake on November 18th, 2011. The starboard spreader broke free at the joint with the mast, causing the mast to break and go over the side. Apparently this was shortly after completing a \$25,000 refit that included the replacement of the running rigging. The owners returned to Solomons for repairs. After an estimate of \$50,000 to return as a sailboat and an estimate of \$100,000 to convert to a power catamaran, a decision was made to convert to power. What was done for this conversion will be explained in more detail further on in the listing. She is owned by her original owner and has proven herself as an offshore cruiser from Maine to Key West, Chesapeake to Bermuda in 57 knot winds and 40' seas, Caribbean from St. Martin to Grenada for 7 years and back thru Puerto Rico, Dominican Republic, Turks & Caicos and Bahamas. She has what is called a "Wave taming bow design" and has a solid foredeck with huge lazarette in lieu of a trampoline. This allows for a ton of storage space not normally available and a nice foredeck to spend time on.

## Основная информация

**Тип судна:** Катамаран

**Модельный год:** 1997

**Год постройки:** 1997

**Страна:** United States

## Размеры

**Длина общая:** 37' 0" (11.28m)

**Ширина:** 15' 0" (4.57m)

**Мин. осадка:** 1' 6" (0.46m)

**Макс. осадка:** 2' 10" (0.86m)

**Длина привального бруса:** 37' 0"  
(11.28m)

## Скорость, вместимость и масса

---

**Крейс. скорость:** 8 Kts. (9 MPH)

**Макс. скорость:** 15 Kts. (17 MPH)

**Вместимость воды:** 100 Gallons

**Вместимость сточного бака:** 30 Gallons

**Объем топливного бака:** 135 Gallons

## Размещение

---

**Всего кают:** 3

**Всего коек:** 3

**Всего ком. состава:** 2

## Корпус и палуба

---

**Материал корпуса:** Fiberglass

**Комплектация корпуса:** Катамаран

## Информация о двигателе

---

**Двигатели:** 2

**Производитель:** Honda

**Тип двигателя:** Outboard

**Тип топлива:** Gas

---

# ПОДРОБНОЕ ОПИСАНИЕ

---

## Overview

---

### Accommodations

"Prime Time" has 3 staterooms with 1 full head and an additional vanity. The Main salon is quite commodious with an L-shaped dinette forward to port with 2 square stool under the dinette for additional seating and storage, followed by the steps to the port hull. Aft of the steps is the Navigation station as well as the large double door fridge/freezer. On the starboard side of the salon forward is the entertainment center, next are the steps to the starboard hull, and all the way aft is the U-shaped sea galley. Aft and center is the door to her large cockpit and helm area. The port side hull has a large guest stateroom aft with queen berth, tons of lockers and cabinets, a vanity in the middle with a small locker for cleaning supplies. The linen closet is in the starboard head. The liquor locker is left of the port steps under the Nav. station.that is shared with the forward cabin with a single berth. There is a large foul weather locker and four large drawers i the forward cabin for spares, charts, Clothes, etc.The master suite is the whole starboard hull and is comprised of a large queen berth aft, opening ports, tons of locker space. Going forward is the huge head with vanity, a private head area, and separate shower stall forward. There is access to the foredeck storage space from a hatch in the shower as well as a hatch on deck.Her helm deck is quite large with the helm on the starboard side with wrap around seating and centerline table. She is enclosed with a dodger and bimini.

### Galley

She has a U-shaped Sea galley offering plenty of counter and cabinet space for food preparation and storage. She is equipped with;

- 2 burner propane stove with chop block top
- double stainless steel sinks with hot and cold pressure water
- microwave and oven
- Huge over and under refrigerator and freezer
- Full size trash receptacle
- Soda Stream soda maker

### Deck Equipment

- Hydraulic steering
- 2 person adjustable helm seat with foot rest
- 8 aluminum opening ports
- 5 aluminum opening hatches with screens
- Stainless steel stanchions
- Molded PVC rub rail
- dinghy davits aft
- Almost new West Marine Dinghy with glass bottom
- 15 HP Yamaha OB
- Lifeline gates port and starboard
- Acrylic companionway door
- Sliding companionway hatch
- Stainless steel anchor roller and cleat
- 2 anchors - Fortress and stainless and chain and rode
- Windlass
- Self-draining foredeck storage lockers
- Cockpit lazarette storage
- Molded non-skid on all deck surfaces
- Canvas dodger
- Canvas bimini
- Cockpit table
- Cockpit cushions
- Cockpit shower

Endeavour was building the Victory Cat and another Cat at the same time. It started at 38' and was extended to 40' and then 42' to prevent squatting under power and hobby horsing in waves. The owner of Prime Time had the unfinished hull trucked south 100 miles to Pine Island where the architect and Owner worked to design and extend the Victory hull 2' for the same reasons and to carry a dinghy. Then the hull went back to Endeavor to be completed. The two hulls are only 36" wide at the waterline leading to a very "Slippery" hull shape. She easily fits into a 16' wide travel lift.

### **Mechanical, Electrical and Plumbing**

- 100 gallon water tank
- 135 gallon fuel in 2 tanks
- 30 gallon holding tank - maybe 20
- 4 batteries
- 110 volt shore power system
- Premier Plus A/C - D/C Electrical Panel

- 30 amp shore power cord with 50 amp converter
- Hot and cold [ressure water system
- Electric water heater
- 12 volt interior and exterior lighting
- 2- 12 volt automatic bilge pumps
- 2- manual bilge pumps
- Fiberglass reinforced Marelon through-hulls and seacocks
- 16K BTU Marine Air conditioning
- Solar trickle charger
- Lots of fans

## Engines

- Twin 90 HP four stroke Honda outboard gas engines 2013 (low hours)
- Deluxe engine instrument panels
- Fiberglass rudders with strong rudder bearings and hydraulic steering
- 100 amp alternators
- Engine battery parallel switch
- Stainless steel props with spare pair aluminum props

## Electronics

- Garmin GPS map 740
- Raymarine Autopilot
- Raymarine MN 100-2
- Autohelm Tridata - depth, speed, distance
- VHF Radio
- Radar
- Radio
- cockpit speakers
- TV set
- Electronics mast (15' clearance) with radar and wind instrument and VHF Antenna
- Satellite phone
- Sony Am/Fm/CD sound system

## Conversion upgrades

- (2) 2013 90HP Honda outboards
- Fiberglass engine mount
- Extra 2' on sterns for flotation and speed
- Electric davits to carry dinghy
- Wood gran and white vinyl on walls in place of carpet
- Teak and holly flooring in place of plywood
- Full size fridge in place of under the counter
- 20 additional shelves, drawers, cupboards, lockers and closets for storage



- Liquor and wine locker, linen closet and trash bin
- SS anchor with SS chain
- Gail rider droque and parachute sea anchor for off shore with 300' 5/8" rode
- New chart plotter and auto pilot
- New 90 gallon fuel tank in addition to original 45 gallon tank
- Custom cockpit table and back rest.

The Conversion from sail to power was done at Washburns Boat Yard and completed at Zahniser's.

## Disclaimer

The Company offers the details of this vessel in good faith but cannot guarantee or warrant the accuracy of this information nor warrant the condition of the vessel. A buyer should instruct his agents, or his surveyors, to investigate such details as the buyer desires validated. This vessel is offered subject to prior sale, price change, or withdrawal without notice.

## Исключения

---

При продаже яхты исключаются личные вещи владельца.

## Отказ от ответственности

---

Компания предоставляет описание судна или яхты добросовестно, но не может гарантировать точность этой информации, а также не ручается за техническое состояние. Покупатель должен проинструктировать своих агентов или оценщиков исследовать представленную информацию более подробно, по собственному желанию. Продажа судна или яхты, изменение цены или снятие с продажи будет происходить без предварительного уведомления.

# ФОТОГРАФИИ

2



3



4



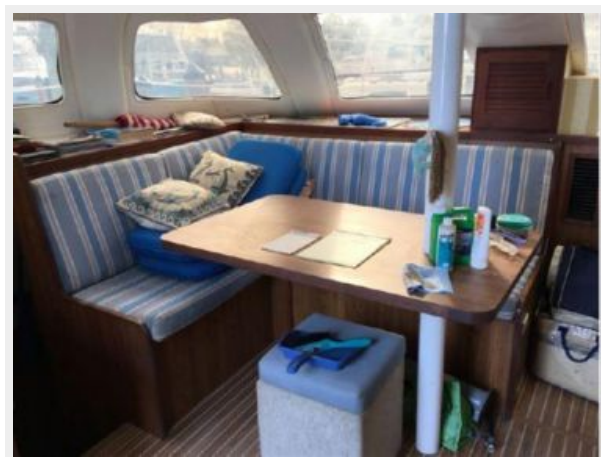
5



6



7



8



9



10



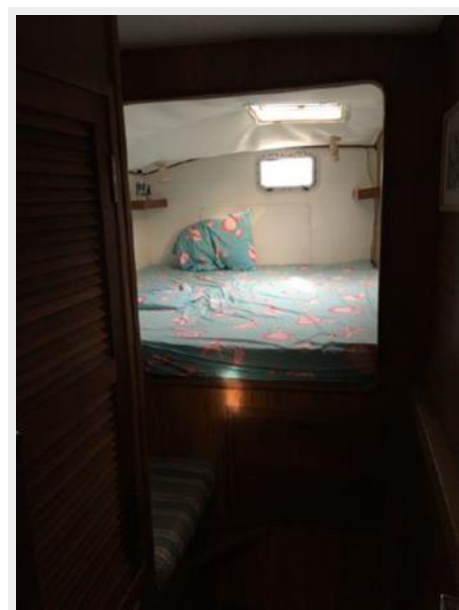
11



12



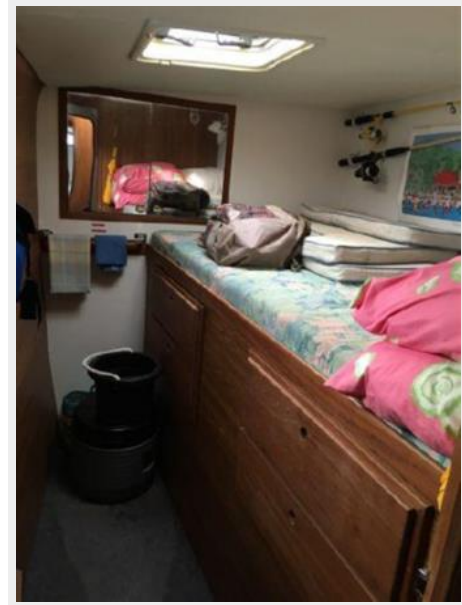
13



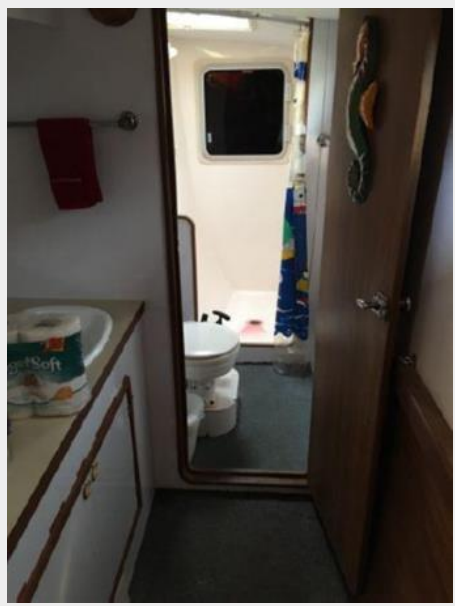
14



15



16



17



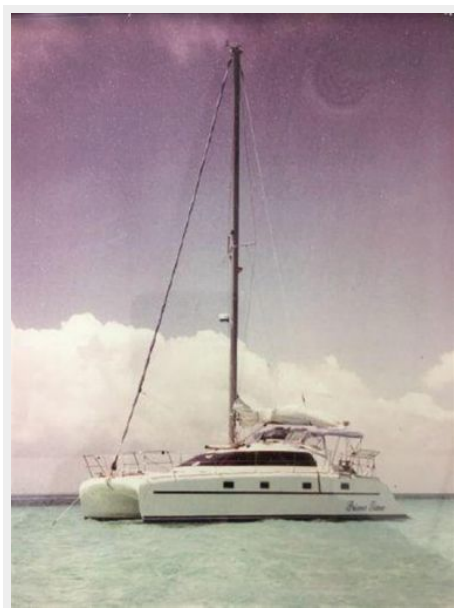
18



19



20



# КОНТАКТЫ

---

Андрей Шестаков (Andrey Shestakov) – ведущий яхтенный брокер отдела продаж яхт и судов компании Shestakov Yacht Sales Inc. Официальный представитель Shestakov Yacht Sales Inc. для русскоговорящих клиентов в центральном офисе компании в Майами/Форт Лодердейл/Флорида/США.

## Контактная информация

---

Email: [andrey@shestakovyachtsales.com](mailto:andrey@shestakovyachtsales.com)

Web: [shestakovyachtsales.com](http://shestakovyachtsales.com)

## Телефоны

---

Краснодарский край: **+7(918)465-66-44**

США, Майами, Флорида: **+1(954)274-4435**

## Время работы

---

Понедельник – Суббота: **9:00 - 21:00**  
EDT

Воскресенье: **Закрето**

## Адрес

---



Harbour Towne Marina, 850 NE 3rd St,  
STE 213, Dania, FL 33004