

MAGIC BUS — SABRE YACHTS



Builder: SABRE YACHTS

Year Built: 1993

Model: Sloop

Price: PRICE ON APPLICATION

Location: United States

LOA: 38' 0" (11.58m)

Beam: 12' 4" (3.76m)

Max Draft: 4' 10" (1.47m)

Cruise Speed: 6 Kts. (7 MPH)

Max Speed: 8 Kts. (9 MPH)

Our experienced yacht broker, Andrey Shestakov, will help you choose and buy a yacht that best suits your needs **Magic Bus — SABRE YACHTS** from our catalogue. Presently, at Shestakov Yacht Sales Inc., we have a wide variety of yachts available on our sale's list. We also work in close contact with all the big yacht manufacturers from all over the world.

If you would like to buy a yacht **Magic Bus — SABRE YACHTS** or would like help answering any questions concerning purchasing, selling or chartering a yacht, please call **+1(954)274-4435**

TABLE OF CONTENTS

TABLE OF CONTENTS	2
SPECIFICATIONS	5
Overview	5
Basic Information	5
Dimensions	5
Speed, Capacities and Weight	5
Accommodations	5
Hull and Deck Information	6
Engine Information	6
DETAILED INFORMATION	7
MAIN DESCRIPTION	7
Features	7
WALK THROUGH	7
ENGINE	7
INTERIOR	8
Rigging	8
MANUFACTURES DESCRIPTION	8
Galley	8
CO-BROKERAGE	9
SAIL INVENTORY	9
DISCLAIMER	9
Exclusions	9
Disclaimer	9
PHOTOS	10
1	10
2	10
3	10
4	10

5	10
6	10
7	11
8	11
9	11
10	11
11	12
12	12
13	12
14	12
15	12
16	12
18	13
17	13
20	13
19	13
22	14
21	14
23	14
24	14
26	15
25	15
27	15
28	15
30	16
29	16
31	16
32	16
33	16

34	16
35	17
36	17
37	17
38	17
39	18
40	18
41	18
CONTACTS	19
Contact details	19
Telephones	19
Office hours	19
Address	19

SPECIFICATIONS

Overview

This immaculate Sabre 38 Mk II has been exceedingly well maintained by its owner. From its gleaming black hull to the polished cherry interior this boat is sure to impress. Newly painted bottom, new Lewmar 40 st main sheet, two Lewmar 30 st reefs, Lewmar 30 jib halyard, new harken roller furling, MarineAir AC are just a few of its great features. This boat is a sailors dream at a great price. Easy to see in Crisfield, Maryland.

Basic Information

Category: Sloop

Model Year: 1993

Year Built: 1993

Country: United States

Dimensions

LOA: 38' 0" (11.58m)

Beam: 12' 4" (3.76m)

Max Draft: 4' 10" (1.47m)

Speed, Capacities and Weight

Cruise Speed: 6 Kts. (7 MPH)

Max Speed: 8 Kts. (9 MPH)

Displacement: 16900 Pounds

Water Capacity: 60 Gallons

Holding Tank: 45 Gallons

Fuel Capacity: 45 Gallons

Accommodations

Total Cabins: 1

Total Heads: 1

Hull and Deck Information

Hull Material: Fiberglass

Engine Information

Engines: 1

Manufacturer: westerbeke

Model: 38B

Engine Type: Inboard

Fuel Type: Diesel

DETAILED INFORMATION

MAIN DESCRIPTION

This immaculate Sabre 38 Mk II has been exceedingly well maintained by its owner. From its gleaming black hull to the polished cherry interior this boat is sure to impress. Newly painted bottom, new Lewmar 40 st main sheet, two Lewmar 30 st reefs, Lewmar 30 jib halyard, new harken roller furling, MarineAir AC are just a few of its great features. This boat is a sailor's dream at a great price. Easy to see in Crisfield, Maryland.

Features

Lewmar 185 bow thruster/dedicated agm battery joy stick control and remote
Stainless steel folding prop
Teak rub rail with s.s. cap
Ideal chain/rope windless
30' ht chain/150' rode
Custom teak dorade boxes
Hall boom vang
Upgraded halyards
All lines led to cockpit/lewis stoppers
Winches include harken electric 40 for main halyard
New Lewmar 40 st main sheet
2 Lewmar 30 st reef
Lewmar 30 jib halyard
2 Lewmar 54 st primary winches
Hydraulic back stay adjuster
New harken roller furling
New Ullman main/full battens/Dutchman system
Harken batt cars rebuilt 2020
Traveler/new end cars/main car rebuilt 2020
Raymarine 60+ wind, speed, depth plus repeater
Raymarine below deck autopilot
Raymarine chart plotter
SeaFrost engine driver and 110v refrigeration
Charles ind. 40amp smart charger
2 group 31 deep cell batteries
Marineair a/c
Ultra leather salon cushions
V berth, quarter berth cushions new 2016
Bottom sandplasted and epoxied 2021
7 kg super max anchor on roller
50' smart plug power cord
Varnished cherry interior
8' West Marine dingy (2n years old)
Cockpit cushions
Dodger with helmsman fly
Hull skirt new 2019
Fairclough boom tent cover 2020
Edson steering cables replaced 2018
All dock lines, fenders, other items included
Icom vhf

WALK THROUGH

Stepping onto the clean decks of 'Magic Bus' one finds a clutter free and well maintained deck and open cockpit. From the large helm one finds an open 360 degree view and ample seating throughout the cockpit. Every implement from the winch drums, helm, compass and traveler are in perfect condition and gleaming. Moving forward through the companionway and entering the vessel salon, warm polished cherry wood throughout impresses even the most discerning boater. The galley is to port with a berth to aft of the galley, a navigation station to starboard of the companionway. Moving forward a roomy salon area with bench seating and an ample table to center port. Enclosed head to port and V berth forward. All interior accommodations are in excellent condition. Engine is accessed through the aft berth on the port side.

ENGINE

Westerbeke 33 hp Excellent condition Tach was replaced at approx. 1100 hrs, new tach 400 hrs

INTERIOR

Leather bench seating in excellent condition, exceptionally clean Cloth Vberth and Aft cabin cushions in excellent condition and exceptionally clean Interior of vessel is immaculate and odor free Teak and holly sole is in excellent condition Cherry interior is in excellent condition

Rigging

All rigging, mast, boom, sails and sheets are in excellent condition. Rig type Bermuda rig (foretriangle height) 49.50 ft (15.09 m) J (foretriangle base) 15.80 ft (4.82 m) P (mainsail luff) 43.40 ft (13.23 m) E (mainsail foot) 13.80 ft (4.21 m) Sailplan Masthead sloop Mainsail area 299.46 sq ft (27.821 m²) Jib/genoa area 391.05 sq ft (36.330 m²) Total sail area 690.51 sq ft (64.150 m²) Racing PHRF 111

MANUFACTURES DESCRIPTION

Sabre 38 Mark II This model was designed by Roger Hewson and introduced in 1988, with 114 completed before production ended in 1995. It has a length overall of 38.67 ft (11.8 m), a waterline length of 31.42 ft (9.6 m), displaces 16,900 lb (7,666 kg) and carries 6,600 lb (2,994 kg) of ballast. The boat has a draft of 6.50 ft (1.98 m) with the standard keel fitted. A shoal draft wing keel and a stub keel with a centerboard were factory options. The Sabre 38 is a recreational keelboat, built predominantly of fiberglass, with wood trim. It has a masthead sloop rig, a raked stem, a reverse transom and a skeg-mounted rudder controlled by a wheel. The boat is fitted with a Westerbeke diesel engine of 33 hp (25 kW) for docking and maneuvering. The fuel tank holds 45 U.S. gallons (170 L; 37 imp gal) and the fresh water tank has a capacity of 106 U.S. gallons (400 L; 88 imp gal). The Mark I has sleeping accommodation for six people, with a forward "V"-berth in the bow cabin, a double port side settee berth in the main cabin, along with a single settee berth on the starboard side and double and single aft quarter berths. There is a provided navigation station on the starboard side. The galley is at the foot of the companionway steps on the port side and includes a three-burner alcohol-fired stove and oven, an ice box or refrigerator under the cockpit and a pressurized water supply. The head is located just aft of the bow cabin, on the port side and includes a shower. Ventilation is provided by hatches over the main cabin and the bow cabin, plus eight opening ports. The cockpit is "T"-shaped and has self-tailing winches for the genoa. There are winches for the halyards and for reefing. The mainsail has a mainsheet traveler on the cabin top. The boat may be optionally equipped with a boom vang and a spinnaker, including associated hardware and winches.

Galley

Double Stainless Sink Insulated ice box Stainless stove multiple drawers additional storage above stove and counter

CO-BROKERAGE

At Curtis Stokes & Assoc. all of our listings are available for co-brokerage on a 50-50 commission split agreement when the selling broker shows the listing and attends the survey. If the selling broker requires a courtesy showing and we are available to conduct a courtesy showing on our listing, the co-brokerage commission split is 60% listing commission and 40% selling commission. If the selling broker does not attend the survey, the co-brokerage commission split is 70% listing commission and 30% selling commission.

SAIL INVENTORY

105 Genoa like new Fully battened Main with Dutchman Both sail two years old

DISCLAIMER

The Company offers the details of this vessel in good faith but cannot guarantee or warrant the accuracy of this information nor warrant the condition of the vessel. A buyer should instruct his agents, or his surveyors, to investigate such details as the buyer desires validated. This vessel is offered subject to prior sale, price change, or withdrawal without notice.

Exclusions

Owner's personal belongings.

Disclaimer

The Company offers the details of this vessel or yacht in good faith but cannot guarantee or warrant the accuracy of this information nor warrant the condition of the vessel. A buyer should instruct his representatives, agents, or his surveyors, to investigate such details as the buyer desires validated. This vessel or yacht is offered subject to prior sale, price change, or withdrawal without notice.

PHOTOS

1



2



3



4



5



6



7



8



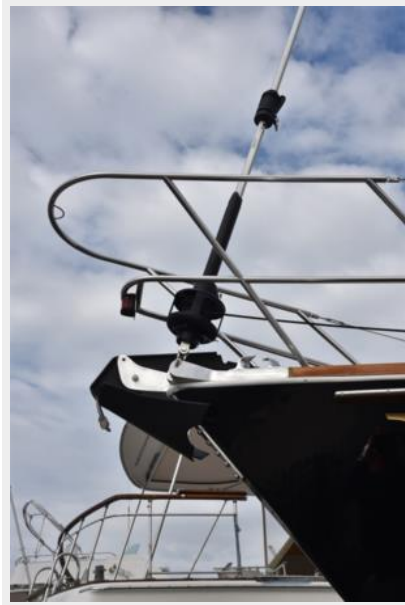
9



10



11



12



13



14



15



16



17



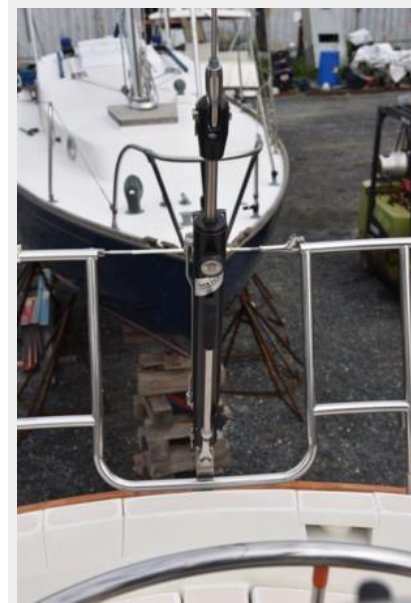
18



19



20



21



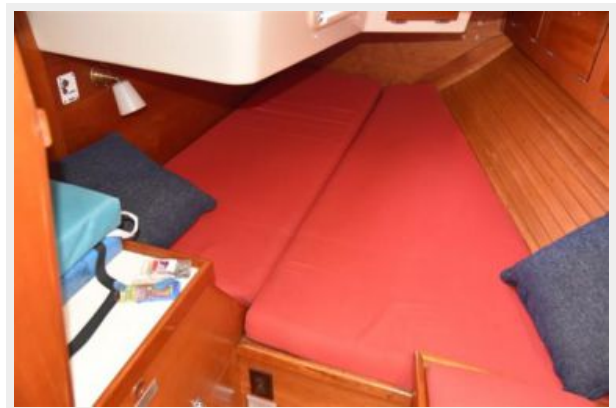
22



23



24



25



26



27



28



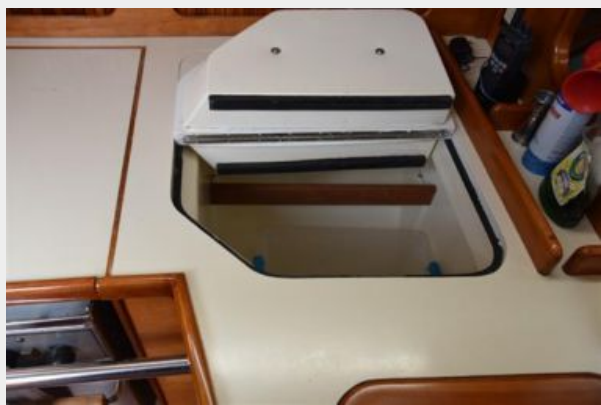
29



30



31



32



33



34



35



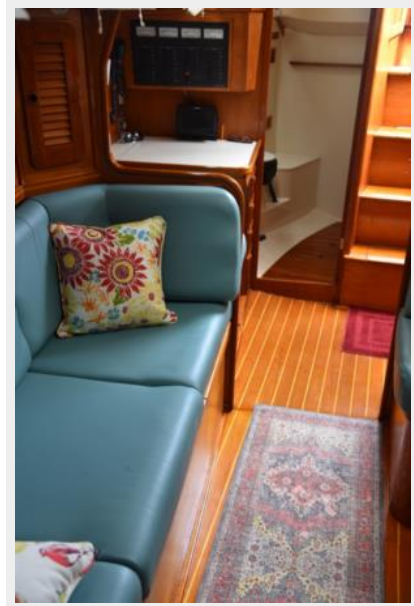
36



37



38



39



40



41



CONTACTS

Andrey Shestakov, leading yacht broker of the sales department of Shestakov Yacht Sales Inc. Shestakov Yacht Sales Inc., the official representative of the Miami/Fort Lauderdale FL headquarters.

Contact details

Email: andrey@shestakovyachtsales.com

Web: shestakovyachtsales.com/en/

Telephones

USA: +1(954)274-4435

Office hours

Monday – Saturday: **9:00 - 21:00** EDT

Sunday: **closed**

Address



Harbour Towne Marina, 850 NE 3rd St,
STE 213, Dania, FL 33004