

SOEIL — C & C YACHTS



Builder: C & C Yachts

Year Built: 1970

Model: Cruising/Racing Sailboat

Price: PRICE ON APPLICATION

Location: United States

LOA: 34' 6" (10.52m)

Beam: 10' 6" (3.20m)

Max Draft: 5' 3" (1.60m)

Our experienced yacht broker, Andrey Shestakov, will help you choose and buy a yacht that best suits your needs **SOEIL — C & C Yachts** from our catalogue. Presently, at Shestakov Yacht Sales Inc., we have a wide variety of yachts available on our sale's list. We also work in close contact with all the big yacht manufacturers from all over the world.

If you would like to buy a yacht **SOEIL — C & C Yachts** or would like help answering any questions concerning purchasing, selling or chartering a yacht, please call **+1(954)274-4435**

TABLE OF CONTENTS

| | |
|------------------------------|----|
| TABLE OF CONTENTS | 2 |
| SPECIFICATIONS | 4 |
| Overview | 4 |
| Basic Information | 4 |
| Dimensions | 4 |
| Speed, Capacities and Weight | 4 |
| Accommodations | 5 |
| Hull and Deck Information | 5 |
| Engine Information | 5 |
| DETAILED INFORMATION | 6 |
| Overview | 6 |
| Exclusions | 7 |
| Disclaimer | 7 |
| PHOTOS | 9 |
| 2 | 9 |
| 3 | 9 |
| 4 | 9 |
| 5 | 9 |
| 6 | 10 |
| 7 | 10 |
| 8 | 10 |
| 9 | 10 |
| 10 | 11 |
| 11 | 11 |
| 12 | 11 |
| 13 | 11 |
| 14 | 12 |
| CONTACTS | 13 |

| | |
|-----------------|----|
| Contact details | 13 |
| Telephones | 13 |
| Office hours | 13 |
| Address | 13 |

SPECIFICATIONS

Overview

C&C 35 MK1's are known for their beautiful sailing performance. Easy to handle and comfortable to cruise, they remain competitive on the race course, often with podium worthy results. "Soeil" has been well maintained and is a great example of why this C&C model remains so popular. Below decks, the large galley has a 2 burner stove and oven, with lots of storage and open counter space. The long portlights and two opening hatches keep the interior space filled with natural light and ventilation, the large dinette provides ample seating while keeping the main cabin clear without having the need to fold up the table to create space. Recent survey will be available to a qualified buyer.

Trades considered

Basic Information

Category: Cruising/Racing Sailboat

Model Year: 1970

Year Built: 1970

Country: United States

Dimensions

LOA: 34' 6" (10.52m)

LWL: 27' 5" (8.36m)

Beam: 10' 6" (3.20m)

Max Draft: 5' 3" (1.60m)

MFG Length: 35' 0" (10.67m)

Speed, Capacities and Weight

Displacement: 10500 Pounds

Water Capacity: 26 Gallons

Fuel Capacity: 20 Gallons

Accommodations

Total Cabins: 1

Total Heads: 1

Hull and Deck Information

Hull Material: Fiberglass

Engine Information

Engines: 1

Manufacturer: Yanmar

Model: Beta 25

Engine Type: Inboard

Fuel Type: Diesel

DETAILED INFORMATION

Overview

Interior

- V-berth forward with enclosed head to port and storage to starboard
- Open salon with u-shaped settee to port and linear settee to starboard. Galley to starboard
- forward facing nav. station and quarter-berth to port.
- cold pressure at galley
- 1 aluminum fresh water tank
- holding tank
- aluminum fuel tank
- max-prop 3 blade prop
- 2 batteries

Electronics and electrical

- windspeed /direction indicator
- Autohelm 3000 self-steering system
- depth sounder
- Garmin GPS map172C color chart plotter
- Standard Horizon Marine 25 watt transceiver
- Pioneer CD/radio w/remote
- 2 dual cabin speakers
- 2 cockpit speakers
- shore power cable
- battery charger(4 amp.)
- West Marine 150 watt power inverter
-
-

Sails and canvas

- Cruising main w/3 reef points
- 125% genoa
- 100% working jib
- Storm jib
- 165% old jib well worn condition
- old main w/ 3 reef points,worn
- 1/2 oz. drifter stysail jib
- small mid-deck stysail jib

- 1/2 oz. masthead spinnaker
- jib roller furling
- boom cover
- cockpit sun cover
- all halyards and sheet lines
- spinnaker pole
- lazy jacks
- 2 self-tailing winches
- various other winches

additonal equipment

- rail mounted barbeque cooker
- galley plates and utensils
- various charts(northeast)
- hatch and companionway screens
- air horn
- wood ladder
- 3 cabin fire extinguishers
- boat hook& life ring
- emergency tiller
- 4 winch handles
- 20 lb. Bruce plow anchor
- 200 ft. spare anchor line
- 6 adult PFD's
- fresh water hose
- 3 20 inch white bumpers

DisclaimerThe Company offers the details of this vessel in good faith but cannot guarantee or warrant the accuracy of this information nor warrant the condition of the vessel. A buyer should instruct his agents, or his surveyors, to investigate such details as the buyer desires validated. This vessel is offered subject to prior sale, price change, or withdrawal without notice.

Exclusions

Owner's personal belongings.

Disclaimer

The Company offers the details of this vessel or yacht in good faith but cannot guarantee or warrant the accuracy of this information nor warrant the condition of the vessel. A buyer should instruct his representatives, agents, or his surveyors, to investigate such details as the buyer

desires validated. This vessel or yacht is offered subject to prior sale, price change, or withdrawal without notice.

PHOTOS

2



3



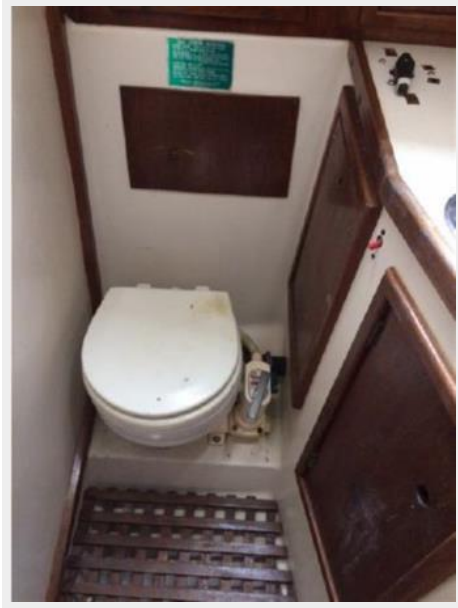
4



5



6



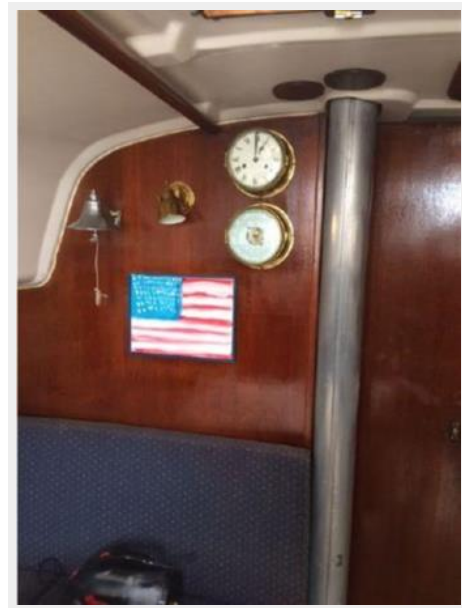
7



8



9



10



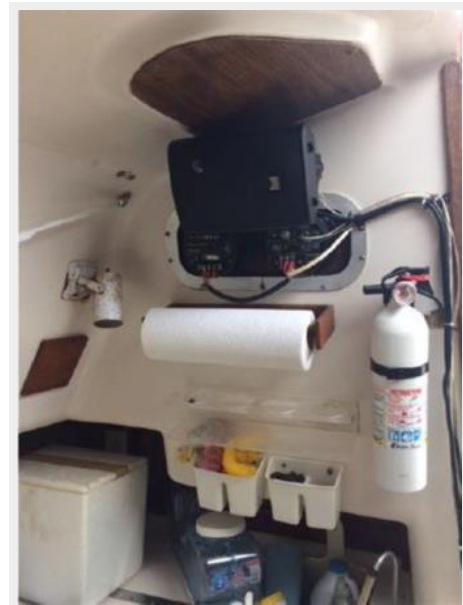
11



12



13



14



CONTACTS

Andrey Shestakov, leading yacht broker of the sales department of Shestakov Yacht Sales Inc. Shestakov Yacht Sales Inc., the official representative of the Miami/Fort Lauderdale FL headquarters.

Contact details

Email: andrey@shestakovyachtsales.com

Web: shestakovyachtsales.com/en/

Telephones

USA: +1(954)274-4435

Office hours

Monday – Saturday: **9:00 - 21:00** EDT

Sunday: **closed**

Address



Harbour Towne Marina, 850 NE 3rd St,
STE 213, Dania, FL 33004