

TOTAL CHAOS VII — BENETEAU



Судостроитель: [BENETEAU](#)

Длина общая: 32' 9" (9.98m)

Год постройки: 2017

Ширина: 11' 7" (3.53m)

Модель: Траулер

Цена: ЦЕНА ЯХТЫ ПО ЗАПРОСУ

Местонахождение: United States

Купить Total Chaos VII — BENETEAU а также выбрать подходящую вам яхту из нашего каталога яхт вам поможет опытный яхтенный брокер Андрей Шестаков. На сегодняшний день компания Shestakov Yacht Sales Inc. имеет большое количество яхт в собственном списке продаж, а также тесно сотрудничает со всеми крупными яхтенными производителями по всему миру.

Для того чтобы купить яхту Total Chaos VII — BENETEAU а также проконсультироваться по любому вопросу связанному с покупкой, продажей, чартером яхт позвоните по телефону **+7(918)465-66-44**.

ОГЛАВЛЕНИЕ

ОГЛАВЛЕНИЕ	2
ХАРАКТЕРИСТИКИ	5
Обзор	5
Основная информация	5
Размеры	5
Скорость, вместимость и масса	6
Размещение	6
Корпус и палуба	6
Информация о двигателе	6
ПОДРОБНОЕ ОПИСАНИЕ	7
Overview	7
Исключения	14
Отказ от ответственности	14
ФОТОГРАФИИ	15
2	15
3	15
4	15
5	15
6	15
7	15
8	16
9	16
10	16
11	16
12	16
13	16
14	17
15	17

16	17
17	17
18	17
19	17
20	18
21	18
22	18
23	18
25	19
24	19
26	19
27	19
28	20
29	20
30	20
31	20
32	21
33	21
34	21
35	21
36	22
37	22
38	22
39	22
40	22
41	22
42	23
43	23
44	23

45	23
46	23
47	23
48	24
49	24
50	24
51	24
52	24
53	24
54	25
55	25
56	25
57	25
58	25
59	25
60	25
61	25
КОНТАКТЫ	26
Контактная информация	26
Телефоны	26
Время работы	26
Адрес	26

ХАРАКТЕРИСТИКИ

Обзор

"Total Chaos VII" is very clean with low hours (170hrs), all the options, excellent maintenance and she is stored indoors. The Swift Trawler 30 provides an excellent balance of style and seaworthiness combined with innovative engineering and quality construction.

Please note: In water photos are manufacturer's images: all others are this vessel which is stored indoors until spring launch.

She has the optional 370 HP Volvo D6 Diesel, 7.5KW Generator, Bow and Stern Thruster, Ray Marine Electronics . Options include upgraded teak on the decks and extended swim platform, 7.5 KW Generator, A/C and heat, Flybridge bimini, telescoping davits, wheelhouse exterior window covering, folding cockpit seats, backup camera, salon soundbar stereo, screens and custom cushions.

Total Chaos is near 2 international shipping depots and she is being offered with a 50% slip and storage discount at an upscale Rhode Island Marina. Keep in mind the RI has no sales or use tax for vessels berthed here. She is a must see if you are considering a clean and modern well maintained fast trawler with all the conveniences. Why buy new

Основная информация

Тип судна: Траулер

Модельный год: 2017

Год постройки: 2017

Страна: United States

Размеры

Длина общая: 32' 9" (9.98m)

Ширина: 11' 7" (3.53m)

Длина привального бруса: 30' 0" (9.14m)

Скорость, вместимость и масса

Водоизмещение: 13224 Pounds

Вместимость воды: 40 Gallons

Объем топливного бака: 185 Gallons

Размещение

Всего ком. состава: 1

Корпус и палуба

Материал корпуса: Fiberglass

Информация о двигателе

Двигатели: 1

Производитель: Volvo Penta

Модель: D6-370

Тип двигателя: Inboard

Тип топлива: Diesel

ПОДРОБНОЕ ОПИСАНИЕ

Overview

Accommodations

SALON

- Bench convertible into a double bed with 3 drawers
- Removable saloon table
- Side windows, opening, in grey tinted glass (black lacquered aluminum frame)
- Storage cupboards
- 3 leaved aft window door with black lacquered aluminum frame
- Full Curtains For All Windows
- Laminated Oak Flooring
- AC/Heat

GALLEY

- L-shaped galley - Includes:
- Worktop in compact Luna Anthracite
- 2 Stainless steel sinks with cold/hot water mixer taps under pressure
- 2 hob cooker and gas oven (Propane)
- Front opening refrigerator (110 V / 12 V)
- Cutlery drawer
- Storage
- Bin (Location)

OWNER'S CABIN (FORWARD)

- Double berth (6'6" x 4'12")
- Marine mattress
- 2 Closets, one with shelves
- Large storage space under berths
- 1 Opening hatch with blackout blind
- 2 Opening hull portholes with blackout blind

STARBOARD HEAD

- Base cabinet
- 2 Opening portholes
- Quiet flush electric toilet

PORT SHOWER

- Polyester shower room with teak seat
- 2 Hull portholes with blackout curtains
- Shower mixer tap with shower support
- Access trapdoor in stowage space
- Protection curtains

Deck

- Composition: Sandwich (Polyester resin - Glass fibre / Balsa core)
- White gel-coat
- Diamond tip type non-slip covering
- Structural counter moulding in monolithic laminate

DECK EQUIPMENT

- Gangway door to starboard

MOORING -ANCHORING

- Stainless steel bow fitting
- Stainless steel bow roller and swing
- 6 Mooring cleats
- Stainless steel gunwale guards
- 1 Mooring locker with self-bailer
- Hood cover
- Anchor Windlass

Cockpit

- Self-bailing cockpit
- 1 Locker in cockpit bottom gas piston assisted and lockable
- Gas cylinder locker
- Hot/cold water cockpit shower hose
- Cockpit gate in transom
- Plain solid wood decked swim platform
- 1 Stainless steel swimming ladder, in position
- 1 Access door to catwalk from cockpit with grey-tinted porthole
- Dinghy Davits

Engine & Mechanical

- Volvo D6 370hp Diesel
- Onan Generator
- Bow & Stern Thruster
- Shaft line propulsion
- Four blade propeller
- Fuel filter
- Sea water filter
- Engine room soundproofed with high density foam 40mm thick
- Air intakes for engine hold cooling, on deck
- Extinguisher
- Fuel tank deck filler Stainless steel
- Steering system: Hung rudder, in stainless steel
- Hydraulic steering
- Electric trim tabs

Flybridge

- Flybridge self-bailing
- Stainless steel access ladder to flybridge with plain solid wood steps and handrails stainless steel
- polyester trap door with gas piston
- Grey tinted windscreen in PMMA
- Stainless steel pulpit surrounding aft of flybridge
- Mast, Navigation light mounting, Radar, Aerials and deck spotlight
- Pilot console with control panel including: Electric engine controls*, Electric windlass control, Thruster* and Flaps
- Fuel gauge indicator
- Tiller angle indicator
- Space for navigation electronics
- Steering wheel Stainless steel
- Steering compass
- Hydraulic steering
- Socket 12 V
- 1 Adjustable pilot seat
- flybridge saloon to port consisting of L-shaped bench seat with fitted storage space

Electronics

Lower & Upper Helm Electronics:

- Raymarine VHF Radio
- Raymarine Large Hybrid Touch Display
- GPS Chartplotter

- Digital Sounder Module
- Backup Camera
- Raymarine Autopilot
- Volvo Digital Engine Readouts

Manufacturer Provided Description

Manufacturer Provided Description

First born of the latest generation of trawlers designed by Beneteau, the Swift Trawler 30 exudes the pedigree of a range uniting maritime adventure with travelling culture. Cut out for the high seas, the Swift Trawler 30 is surprisingly comfortable and her autonomy and many fittings are reassuring, making life on board much easier. With a clear-cut combination of style and seaworthiness, you will be tempted by the energy performance of this elegant voyager second to none.

With hand rails omnipresent, high pulpits and a large well-protected starboard walkway, the Swift Trawler 30 maximizes the safety of movements on board. Unique on this type of boat, the panoramic view from the steering station makes for easy driving unobstructed by any obstacle. With an autonomy of around 200 miles at a cruising speed and large water tank capacities, the Swift Trawler 30 will take you to places where no other craft of a similar size would dare adventure. Designed for a comfortable lifestyle on board, bright but also simple and practical, the Swift Trawler 30 provides multiple modular fittings. The interior space is optimized reflecting the large open spaces you will be bound to explore. The cockpit opens onto the sea in the form of a terrace, with foldaway seats, a convertible sofa, and a well-designed table sliding beneath the seats to increase the amount of space in this reception area, and suiting all crew configurations.

Hull

- Composition: Sandwich (Polyester resin - Glass fibre / Balsa core)
- White gel-coat
- Structural hull counter moulding in monolithic laminate (Polyester resin - Glass fibre)
- Profile: Semi-floating hull
- Stainless steel guard sheer rail on hull

Deck

- Composition: Sandwich (Polyester resin - Glass fibre / Balsa core)
- White gel-coat
- Diamond tip type non-slip covering
- Structural counter moulding in monolithic laminate

DECK EQUIPMENT

- Gangway door to starboard

MOORING -ANCHORING

- Stainless steel bow fitting
- Stainless steel bow roller and swing
- 6 Mooring cleats (L 300mm)
- Stainless steel gunwale guards
- 1 Mooring locker with self-bailer
- Hood cover

Cockpit

- Self-bailing cockpit
- 1 Locker in cockpit bottom gas piston assisted and lockable
- Gas cylinder locker
- Hot/cold water cockpit shower hose
- Cockpit gate in transom
- Plain solid wood decked swim platform
- 1 Stainless steel swimming ladder, in position
- 1 Access door to catwalk from cockpit with grey-tinted porthole

Accommodations

- Alpi Mahogany interior wood
- Milano oak laminated floors

SALOON

- Headroom: 1,95 m / 6'5''
- Bench convertible into a double bed with 3 drawers (optional extras: 2 pouffes)
- Removable saloon table
- Side windows, opening, in grey tinted glass (black lacquered aluminium frame)
- Storage cupboards
- 3 leaved aft window door with black lacquered aluminium frame
- Antenna pre-wiring with twin socket (digital or satellite)

GALLEY

- Headroom: 1,95 m / 6'5''
- L-shaped galley - Includes:
- Worktop in compact Luna Anthracite
- 2 Stainless steel sinks with cold/hot water mixer taps under pressure
- 2 hob cooker and gas oven (without Grill)

- Front opening refrigerator (Supply 220 V / 12 V)
- Cutlery drawer
- Storage
- Bin (Location)

OWNER'S CABIN (FORWARD)

- Headroom: 1,95 m / 6'5"
- Double berth (1,99 x 1,52 m / 6'6" x 4'12")
- Marine mattress
- 2 Closets, one with shelves
- Large storage space under berths
- 1 Opening hatch with blackout blind
- 2 Opening hull portholes with blackout blind

STARBOARD HEADROOM (2 cabins layout)

- Headroom: 1,95 m / 6'5"
- Polyester shower room
- Mirror
- Upper cupboard (with socket)
- Base cabinet
- 2 Opening portholes
- Quiet flush electric toilet
- Washbasin
- Mixer tap
- Shower mixer tap with shower support
- Protection curtains

STARBOARD HEADROOM (1 cabin version)

- Headroom: 1,95 m / 6'5"
- Polyester shower room
- Mirror
- Upper cupboard (with socket)
- Base cabinet
- 2 Opening portholes
- Quiet flush electric toilet
- Washbasin
- Mixer tap

PORT HEADROOM (1 cabin version)

- Polyester shower room with teak seat
- 2 Hull portholes with blackout curtains
- Shower mixer tap with shower support

- Access trapdoor in stowage space
- Protection curtains

GUEST CABIN (2 cabins layout)

- Headroom: 1,95 m / 6'5"
- Bunk beds (1,85 x 0,58 m / 6'1" x 1'11")
- Marine mattress
- Base cabinet
- Storage under berth
- 2 Opening portholes

Engine

- Shaft line propulsion
- Four blade propeller
- Volvo D6-370hp Diesel with 170 hours
- Fuel filter with decanter
- Sea water filter
- Engine room soundproofed with high density foam 40mm thick
- Air intakes for engine hold cooling, on deck
- Extinguisher
- Fuel tank deck filler Stainless steel
- Aluminium fuel tank(s) (Capacity 800 l)
- Steering system: Hung rudder, in stainless steel
- Hydraulic steering
- Electric trim tabs

Electrical

- Electrical panel 12 V / 220 V
- Shore power socket 220 V
- 2 Engine batteries 12 V 50 Ah
- 1 Service battery 12 V 140
- Battery charger
- 2 Sockets 12 V
- Interior lighting (Overhead lights, reading lights)
- Outside lighting (Navigation lights, Mooring light, Spot cockpit)

Flybridge

- Flybridge self-bailing
- Stainless steel access ladder to flybridge with plain solid wood steps and handrails stainless steel

- polyester trap door with gas piston
- Grey tinted windscreen in PMMA
- Stainless steel pulpit surrounding aft of flybridge
- Mast, Navigation light mounting, Radar, Aerials and deck spotlight
- Pilot console with control panel including: Electric engine controls*, Electric windlass control, Thruster* and Flaps
- Fuel gauge indicator
- Tiller angle indicator
- Space for navigation electronics
- Steering wheel Stainless steel
- Steering compass
- Hydraulic steering
- Fog horn
- Socket 12 V
- 1 Adjustable pilot seat
- flybridge saloon to port consisting of L-shaped bench seat with fitted storage space and removable plain solid wood table - (Cushions ??Columbia??)

Исключения

При продаже яхты исключаются личные вещи владельца.

Отказ от ответственности

Компания предоставляет описание судна или яхты добросовестно, но не может гарантировать точность этой информации, а также не ручается за техническое состояние. Покупатель должен проинструктировать своих агентов или оценщиков исследовать представленную информацию более подробно, по собственному желанию. Продажа судна или яхты, изменение цены или снятие с продажи будет происходить без предварительного уведомления.

ФОТОГРАФИИ

2



3



4



5



6



7



8



9



10



11



12



13



14



15



16



17



18



19



20



21



22



23



24



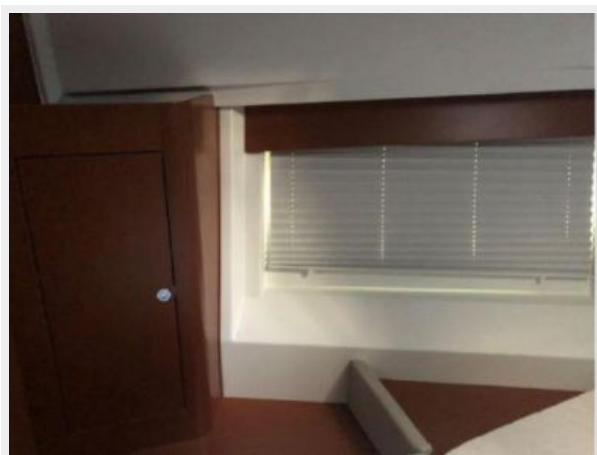
25



26



27



28



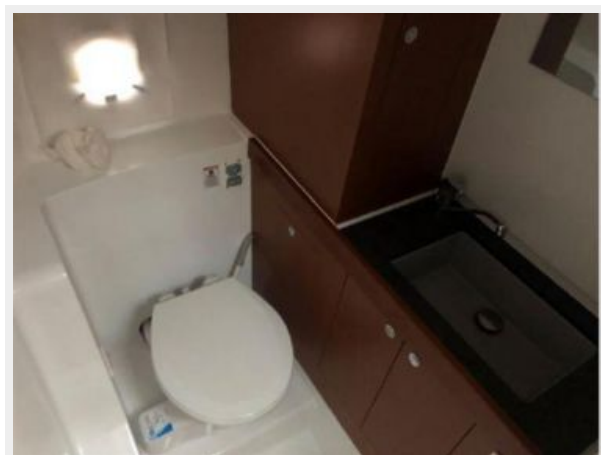
29



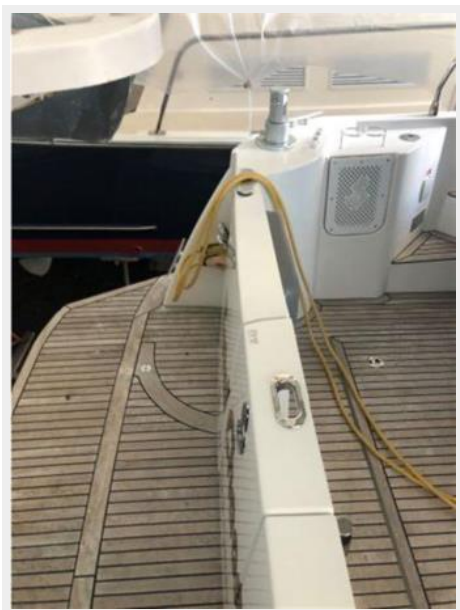
30



31



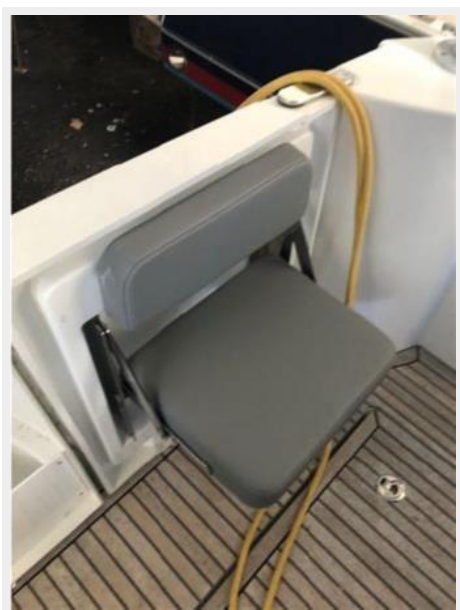
32



33



34



35



36



37



38



39



40



41



42



43



44



45



46



47



48



49



50



51



52



53



54



55



56



57



58



59



60



61



КОНТАКТЫ

Андрей Шестаков (Andrey Shestakov) – ведущий яхтенный брокер отдела продаж яхт и судов компании Shestakov Yacht Sales Inc. Официальный представитель Shestakov Yacht Sales Inc. для русскоговорящих клиентов в центральном офисе компании в Майами/Форт Лодердейл/Флорида/США.

Контактная информация

Email: andrey@shestakovyachtsales.com

Web: shestakovyachtsales.com

Телефоны

Краснодарский край: **+7(918)465-66-44**

США, Майами, Флорида: **+1(954)274-4435**

Время работы

Понедельник – Суббота: **9:00 - 21:00**
EDT

Воскресенье: **Закрето**

Адрес



Harbour Towne Marina, 850 NE 3rd St,
STE 213, Dania, FL 33004