

## SUNSTAR — CATALINA



**Builder:** CATALINA

**Year Built:** 1986

**Model:** Cruising Sailboat

**Price:** PRICE ON APPLICATION

**Location:** United States

**LOA:** 30' 0" (9.14m)

**Beam:** 10' 10" (3.30m)

**Max Draft:** 4' 4" (1.32m)

Our experienced yacht broker, Andrey Shestakov, will help you choose and buy a yacht that best suits your needs **Sunstar — CATALINA** from our catalogue. Presently, at Shestakov Yacht Sales Inc., we have a wide variety of yachts available on our sale's list. We also work in close contact with all the big yacht manufacturers from all over the world.

If you would like to buy a yacht **Sunstar — CATALINA** or would like help answering any questions concerning purchasing, selling or chartering a yacht, please call **+1(954)274-4435**

---

# TABLE OF CONTENTS

---

TABLE OF CONTENTS	2
SPECIFICATIONS	4
Overview	4
Basic Information	4
Dimensions	4
Speed, Capacities and Weight	4
Accommodations	4
Hull and Deck Information	5
Engine Information	5
DETAILED INFORMATION	6
Overview	6
Exclusions	7
Disclaimer	7
PHOTOS	8
2	8
3	8
4	8
5	8
6	9
7	9
8	9
9	9
10	10
11	10
12	10
13	10
14	11
15	11

---

16	11
17	11
18	12
19	12
20	12
21	12
22	13
23	13
24	13
25	13
26	14
27	14
CONTACTS	15
Contact details	15
Telephones	15
Office hours	15
Address	15

---

# SPECIFICATIONS

---

## Overview

---

Sunstar is a unique offering in that she is a shoal draft model, 4 ft. 4 inch, of the famous Catalina 30 which enjoyed a production run of over 20 years. This boat is more heavily ballasted in her fin keel to insure the same stability of her "deeper draft sisters" without any of the negatives connected with the wing keel models. She boasts more interior headroom than in later models and provides clear vision offered by her large laminate safety-glass port lights, port and starboard in the main salon. The full length cockpit seats offer additional seating comfort and provide on-deck sleeping under the stars. Check her out! Boatshare options available

## Basic Information

---

**Category:** Cruising Sailboat

**Model Year:** 1986

**Year Built:** 1986

**Country:** United States

## Dimensions

---

**LOA:** 30' 0" (9.14m)

**LWL:** 25' 0" (7.62m)

**Beam:** 10' 10" (3.30m)

**Max Draft:** 4' 4" (1.32m)

**MFG Length:** 30' 0" (9.14m)

## Speed, Capacities and Weight

---

**Displacement:** 10700 Pounds

**Water Capacity:** 48 Gallons

**Holding Tank:** 12 Gallons

**Fuel Capacity:** 21 Gallons

## Accommodations

---

**Total Cabins:** 1

**Total Heads:** 1

---

## Hull and Deck Information

---

**Hull Material:** Fiberglass

---

## Engine Information

---

**Engines:** 1

**Manufacturer:** Universal

**Model:** M25

**Engine Type:** Inboard

**Fuel Type:** Diesel

---

# DETAILED INFORMATION

---

## Overview

---

### Accommodations and gallery

- Traditional interior
- sleeps 7
- forward double w/storage
- a removable table which lowers for another double bunk
- head has sink, pressure hot and cold water and a large medicine chest and mirror.
- CNG 2 burner stove w/oven
- double SS sink
- well insulated icebox
- lots of storage in the galley
- complete set of dishware and silverware
- nav station

### Electric and electronics

- Depth sounder
- 5" compass mounted
- handheld UHF
- clarion am/fm disc player with speakers
- 2 new batteries w/selector switch
- wheel steering
- Standard Horizon VHF
- 12v/110 v systems
- dockside electric
- hot water driven by dockside power 110V and/or motoring

### sails, deck and additional gear

- hood single line furling system on jib
- SS standing rigging
- Lazy jacks
- reef points
- 2 winch handles
- 4 winches, 3 self-tailing
- back stay adjuster
- mainsail cover
- holding tank w/macerator

- Edson wheel steering
- cockpit cushions
- emergency tiller
- automatic bilge pump and manual override
- sails in excellent condition and professionally maintained/stored
- Danforth style anchor
- SS anchor pulpit
- new steering cables
- all CG safety equipment

**Disclaimer**The Company offers the details of this vessel in good faith but cannot guarantee or warrant the accuracy of this information nor warrant the condition of the vessel. A buyer should instruct his agents, or his surveyors, to investigate such details as the buyer desires validated. This vessel is offered subject to prior sale, price change, or withdrawal without notice.

---

## Exclusions

Owner's personal belongings.

---

## Disclaimer

The Company offers the details of this vessel or yacht in good faith but cannot guarantee or warrant the accuracy of this information nor warrant the condition of the vessel. A buyer should instruct his representatives, agents, or his surveyors, to investigate such details as the buyer desires validated. This vessel or yacht is offered subject to prior sale, price change, or withdrawal without notice.

# PHOTOS

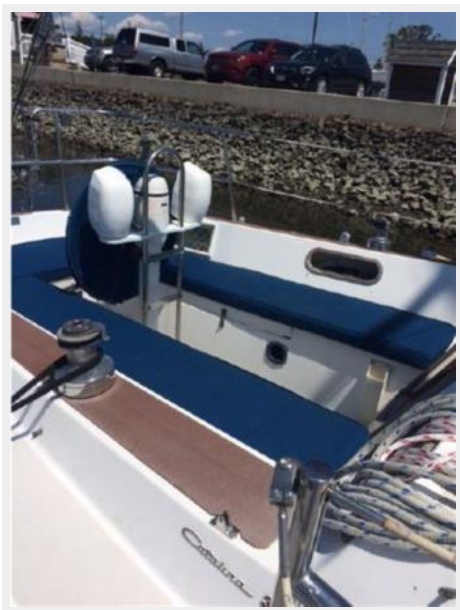
2



3



4

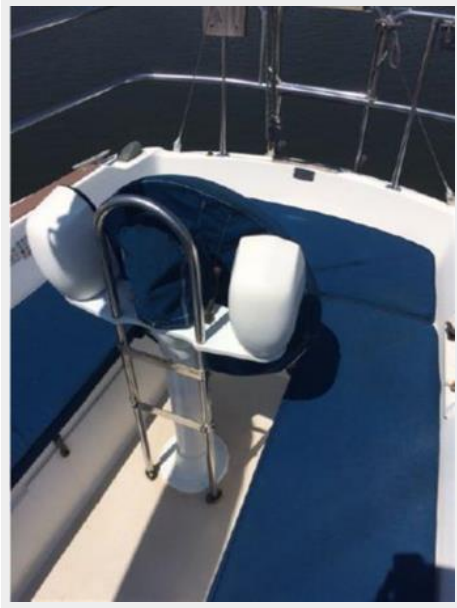


5





6



7



8



9



10



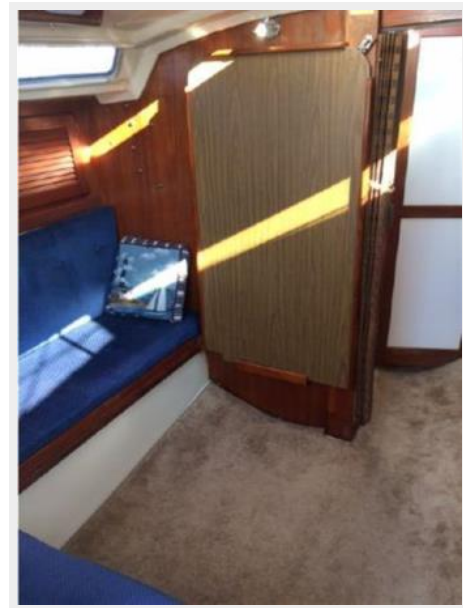
11



12



13



14



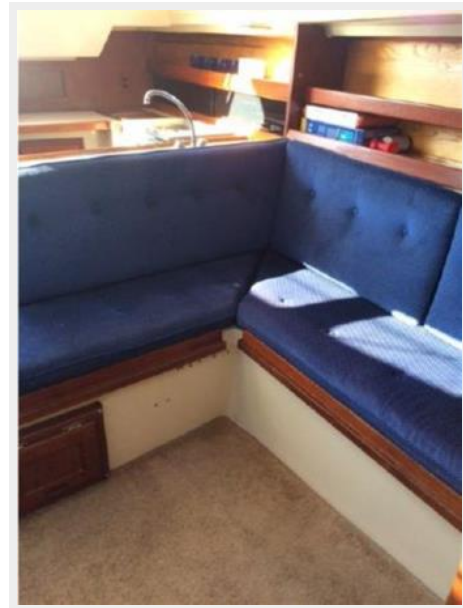
15



16



17



18



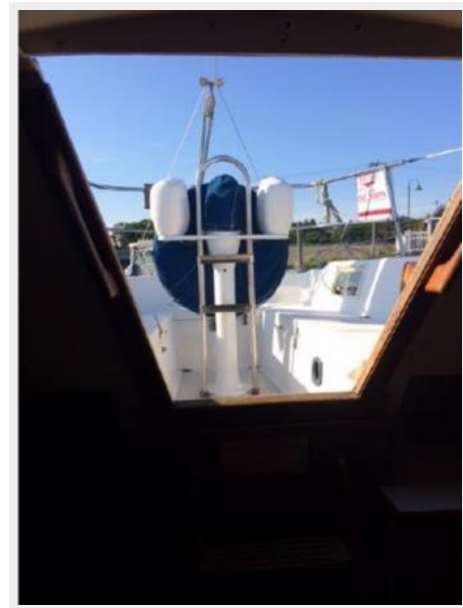
19



20



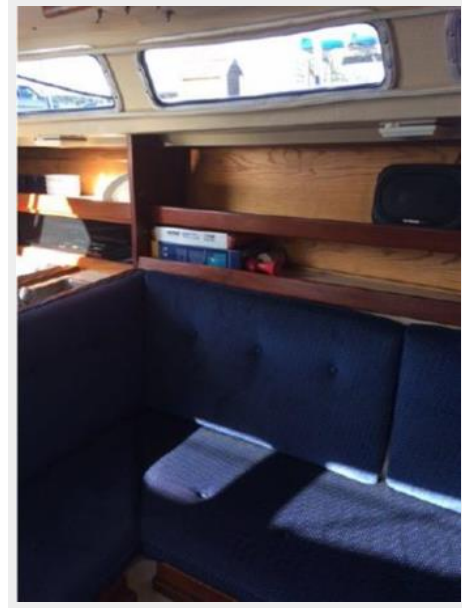
21



22



23



24



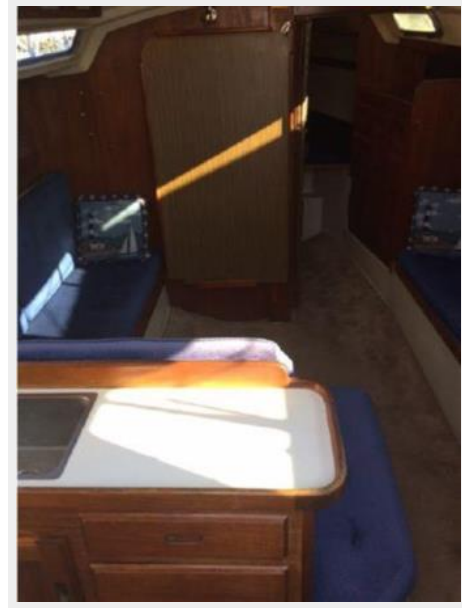
25



26



27



# CONTACTS

---

Andrey Shestakov, leading yacht broker of the sales department of Shestakov Yacht Sales Inc. Shestakov Yacht Sales Inc., the official representative of the Miami/Fort Lauderdale FL headquarters.

## Contact details

---

Email: [andrey@shestakovyachtsales.com](mailto:andrey@shestakovyachtsales.com)

Web: [shestakovyachtsales.com/en/](http://shestakovyachtsales.com/en/)

## Telephones

---

USA: +1(954)274-4435

## Office hours

---

Monday – Saturday: **9:00 - 21:00** EDT

Sunday: **closed**

## Address

---



Harbour Towne Marina, 850 NE 3rd St,  
STE 213, Dania, FL 33004