

SEA GYPSY — NORDIC TUGS



Builder: NORDIC TUGS

Year Built: 2003

Model: Trawler Yacht

Price: PRICE ON APPLICATION

Location: United States

LOA: 44' 0" (13.41m)

Beam: 13' 10" (4.22m)

Max Draft: 4' 3" (1.30m)

Our experienced yacht broker, Andrey Shestakov, will help you choose and buy a yacht that best suits your needs **Sea Gypsy — NORDIC TUGS** from our catalogue. Presently, at Shestakov Yacht Sales Inc., we have a wide variety of yachts available on our sale's list. We also work in close contact with all the big yacht manufacturers from all over the world.

If you would like to buy a yacht **Sea Gypsy — NORDIC TUGS** or would like help answering any questions concerning purchasing, selling or chartering a yacht, please call **+1(954)274-4435**

TABLE OF CONTENTS

TABLE OF CONTENTS	2
SPECIFICATIONS	4
Overview	4
Basic Information	4
Dimensions	4
Speed, Capacities and Weight	4
Accommodations	4
Hull and Deck Information	4
Engine Information	5
DETAILED INFORMATION	6
Introduction	6
Engine and Mechanical	6
Equipment	6
Hull	6
Deck	6
Pilothouse	7
Salon	8
Galley	8
Companionway	8
Owner's Cabin	9
Guest Cabin	9
Head	9
Electronics	10
Propulsion/Engine Room	10
Remarks	11
Exclusions	12
Disclaimer	12
PHOTOS	13

CONTACTS	18
Contact details	18
Telephones	18
Office hours	18
Address	18

SPECIFICATIONS

Overview

The Nordic Tug is one of the finest and most popular blue water cruisers in this price range. SEA GYPSY is not one to be missed.

Basic Information

Category: Trawler Yacht

Model Year: 2003

Year Built: 2003

Country: United States

Registration #: 1152760

Vessel Top: Bimini Top

Dimensions

LOA: 44' 0" (13.41m)

Beam: 13' 10" (4.22m)

Max Draft: 4' 3" (1.30m)

Speed, Capacities and Weight

Water Capacity: 200 Gallons

Holding Tank: 45 Gallons

Fuel Capacity: 600 Gallons

Accommodations

Total Cabins: 2

Hull and Deck Information

Hull Material: Fiberglass

Engine Information

Engines: 1

Manufacturer: Cummins

Model: 6CTAB.3-M3

Engine Type: Inboard

Fuel Type: Diesel

DETAILED INFORMATION

Introduction

The Nordic Tugs 42/44 model is the heart and soul of the product line for this exceptional brand. It is the perfect size for a cruising couple with either children or an occasional guest visit. This boat is perfect for cruising; whether the "Great Loop", the "ICW", or the Caribbean. She is economical, but when in need, she can put some distance under her hull far faster than many other trawlers. For those sailors who like to spend time in the fresh air, **SEA GYPSY's** flybridge is the perfect solution to your cruising wishes. Easy to see in Fort Myers, Florida she's waiting for your visit.

Engine and Mechanical

Cummins 6CTA8.3-M3 diesel engine, 450 hp @ 2600 rpm's, 2,753 hours Racor 490MAM fuel filter Michigan 28 x 30 propeller Cummins 11.5 kW generator, 516 hrs. Reduction gear: MG 5075-A, ratio: 2.47:1 (2) Dometic Marine Air 16K air conditioners, one amidship, one rear (1) Dometic Marine Air 12K air conditioner, forward Side Power 8 hp bow thruster Stern thruster U-Line icemaker

Equipment

- Bose entertainment system

Hull

- Ivory gelcoat hull with Flag Blue inset and waterline
- Structural lamination with multiple layers of hand laminated knitted fiberglass and resin
- Stringers - continuous full-length foam cored hand laminated fiberglass structural stringers
- Black antifouling bottom paint (May 2018) with black boot stripe
- Bilge pumps - 2,000 gph, in three compartments with automatic/manual switches at helm
- Bonding System - common bonding zincs on transom plus rudder, shoe and thruster zincs

Deck

- Color - Ivory gelcoat #953-IC-057
- Deck - Molded textured surface in walking and work areas
- Deck - Raised walk-around side decks
- Door - hinges transom
- Fresh water wash down bow (for anchor wash down) and stern (for cockpit wash down)

- Scuppers - cockpit
- Optional bow pulpit with twin anchor roller assemblies
- Anchor roller assembly
- Windlass
- Bow bitt
- Storage - Cockpit cabinet with double doors
- Storage - Cockpit recessed fender holder
- Storage - Deck hatch to lazarette with sealing gasket
- Storage - Foredeck port and starboard storage boxes
- Handrails - Deck, 1-1/4' x 30' high, 316 SS bow and stern
- Handrails - 1-1/4" 316 S 30" high on salon cabin top and ladder on port side
- Ladder - 316 SS open rail with wide treads from aft deck to boat deck port side
- Hand grabs - 316 SS, two forward of pilothouse doors
- Windows - Diamond Sea Glaze Oyster powder coated; two sliding pilothouse entry and one aft entry
- Port lights - 10" round in forward cabin (3)
- Cleats - 12" cap rail mounted 316 SS mooring cleats (10)
- Deck fittings - 316 SS 2" fuel fills (2), SS 1-1/2" water fill, SS 1-1/2" waste suction fitting
- Lights - Aft deck overhead with switch on fixtures
- Outlet - 110 VAC GFCI (cockpit)s

Pilothouse

- Helm seat - fixed chair with slide and adjustable pedestal
- Settee with teak fixed height table
- Aft facing seat - forward starboard helm
- Amtico flooring
- Teak overhead console with Sony player / radio and VHS Radio
- Bose entertainment system
- Bose stereo speakers (2)
- Chart table with drawer; Graphite laminate green counter top
- Engine control - Cummins® electronic single lever throttle/shift
- Engine instrumentation - Cummins
- Bow thruster control - joystick
- Stern thruster control - joystick
- Compass
- Windshield wipers
- Windshield defroster
- Light - Reading 12 VDC
- Light - Chart, red/white
- Lights - Over helm, 12 VDC red (2)
- Outlets - 110 VAC (2)
- Power ports - 12 VDC (2)

- Hatch - 16.5 with screen

Salon

- Cabinets on port side with doors, sandstone Formica top
- Cabinets on starboard side, forward with doors, and sandstone Formica top
- Tan carpeting
- U-Line icemaker
- Settee with storage under, doors drop
- Insignia 27" LED TV with built in DVD player with external antenna (will receive signals from shore cable or from an external antenna installed on the boat)
- Teak table
- (2) Bose stereo speakers
- Halogen overhead lights (6) with switches
- 110 AC outlet (2)
- 12V Reading lights (2)
- Indirect lighting above windows

Galley

- U-shaped counter
- Double, deep stainless-steel sink with spray faucet
- Sharp Carousel microwave (2010)
- Princess 3-burner electric stove with oven
- VitriFrigo refrigerator / freezer with icemaker AC/DC
- Electric cabin heater
- Broan 1055 CM trash compactor
- Counter top - U-shaped Corian Sandstone countertop with cove back-splash and sea rail
- Cabinetry in teak and sandstone Formica
- 4-Drawer unit
- Storage - Spice rack over stove
- Storage - Tip-out storage in front of sink
- Amtico flooring
- Exhaust fan and switch
- Lights - overhead, 12VDC with stainless-steel bezel (4)
- Outlets - 110VAC GFCI protected (2)

Companionway

- Desk - with bench seat, storage under
- Electrical panels, includes AC/DC meters, breakers, and generator start panel

- Lights - stairs, red in step riser
- Light - reading over desk
- Lights - overhead 12 VDC (4)

Owner's Cabin

- Queen bed on centerline, storage under
- Stairs to cabin with light and 3-way switch
- Anchor locker forward with door
- Large drawers under berth (2)
- Hanging lockers with shelf and automatic lights (2)
- Cabinet with 2 teak drawers, 1 drop door (2, port + starboard)
- Side shelves with sea rail
- Mirror on head door
- 12V Halogen overhead lights (2), with switches
- 12V Stainless-steel reading lights (2)
- 110V AC outlets (2)
- Sharp Aquos 13" TV

Guest Cabin

- Convertible queen couch with storage under
- Stair to cabin with light and switch
- Hanging locker with automatic light, and washer / dryer cabinet below
- Cabinets above couch, with 4-drawers + open shelving
- Triangular floor to ceiling storage cabinet
- 12V Stainless steel overhead dome lights (2)
- 110V outlet (1)

Head

- Amtico flooring - owner's
- Mahogany + holly flooring - guest/day head
- PAR electric head in each
- Stainless-steel sinks with faucet
- Vanity, storage, teak door
- Exhaust fans with switches
- Forward shower with glass bi-fold door
- Aft molded shower with glass bi-fold door
- Built-in medicine cabinet
- TP holders, towel racks, and mirrors

- Teak entry doors with locking handle
- 12V Stainless-steel overhead lights forward (2)
- 12V Overhead dome lights aft (2)
- 110 AC GFI outlet

Electronics

Helm:

- Danforth compass
- Twin Disc EC-200 Power Commander with Station Select
- Garmin 2010C GPS map chart plotter
- Raymarine RL70C color radar (inoperable) and chart display
- Raymarine L760 color plotter/fish finder
- Bow and stern thruster joystick controls
- Raymarine auto pilot
- VHF radio
- Spotlight control
- Wind & speed indicator

Flybridge:

- Compass
- Cummins Marine engine monitor
- Twin Disc Power Command and station select

- Bow and stern thruster joysticks

Propulsion/Engine Room

- Cummins 450 hp 6CTA 8.3 - M3
- Cummins instrument panel
- Alternator - 160 amp (12V)
- Walker Air Sep filter system
- Single lever control, throttle/shift
- Twin Disc MG 5075A reduction gear, 2.47:1

- Wet main engine exhaust replaced in 2018, exhaust exits underwater, starboard, midship
- Michigan 28 X 30 MRI 2649 propeller
- Lights - engine room (6)
- Outlet - 110 VAC GFCI
- 11.5 kW generator with 512 hours in sound shield
- Exhaust Sep exhaust system for generator

- Racor #75900MAX30 fuel and water separator for generator, October 2017
- Side Power 8 hp 12V bow thruster with joystick control
- Stern thruster (added)
- **Inverter not functional**
- Heavy engine room sound deadening
- Integral drip pan under engine

- 2" Stainless-steel shaft with dripless seal
- Zincs on rudder/shoe/prop
- Bonding system to zinc hull plate, with galvanic isolator
- Bronze propeller (4 blade) 28 X 28
- Sea water strainers (bronze) (2)
- Cutlass shaft bearings (2)
- (12) Deep-cycle, AGM, maintenance free batteries - (3) engine start, (4) house, (4) thrusters (2 bow + 2 stern), (1) generator
- Fiberglass battery box (1)
- (2) Battery chargers - (1) for house/starting/bow thruster batteries; (1) Pro Marine for generator and stern thruster batteries
- (2) Pro Marine battery chargers to gear
- 2000 GPH bilge pumps (3), automatic/manual
- Rudder stops
- Stainless-steel rudder and shoe
- Force 10 hot water heater replaced with built-in stainless-steel 11.5 gallon hot water tank, electric/engine
- Automatic water pressure pump
- 120V LED engine room lights and 12V house lights - Engine Room (6)
- Single lazarette room lights (2)

- 110 AC GFI outlet (1)

Remarks

A cost-effective entry into the motor cruising life for retiring couples, sailors who are looking for more ease in their cruising life and young couples looking for the perfect "loop" boat or for that one time "great adventure", "Sea Gypsy" could be the perfect choice. Affordable, easy to operate, comfortable, roomy, seaworthy and safe, Nordic Tugs rarely disappoint their owners.

Bridge clearance is 14' to bridge rail and 18'6" with radar mast up and Bimini installed. Mast can be lowered at 4-bolt hing and Bimini uninstalled.

The new wet exhaust changes made in 2018, were installed with full guidance from Nordic Tugs. The new exhaust was fabricated by Nordic Tug's vendor in Washington State to Nordic Tugs specs, plans and drawings, and installed in Florida.

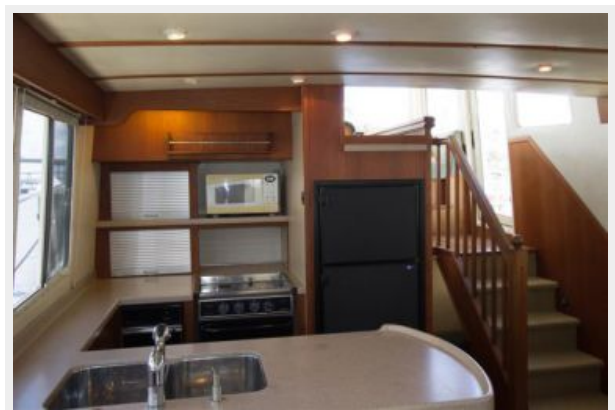
Exclusions

Owner's personal belongings.

Disclaimer

The Company offers the details of this vessel or yacht in good faith but cannot guarantee or warrant the accuracy of this information nor warrant the condition of the vessel. A buyer should instruct his representatives, agents, or his surveyors, to investigate such details as the buyer desires validated. This vessel or yacht is offered subject to prior sale, price change, or withdrawal without notice.

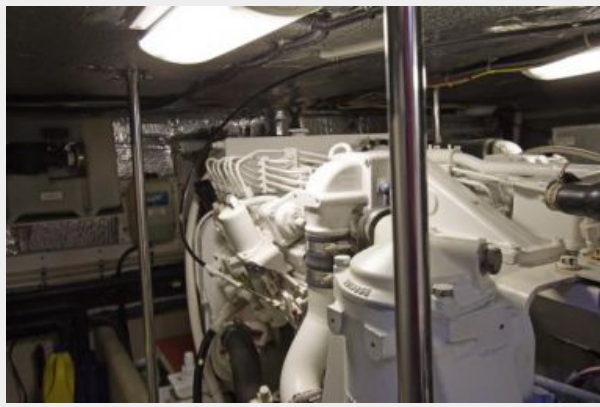
PHOTOS











CONTACTS

Andrey Shestakov, leading yacht broker of the sales department of Shestakov Yacht Sales Inc. Shestakov Yacht Sales Inc., the official representative of the Miami/Fort Lauderdale FL headquarters.

Contact details

Email: andrey@shestakovyachtsales.com

Web: shestakovyachtsales.com/en/

Telephones

USA: +1(954)274-4435

Office hours

Monday – Saturday: **9:00 - 21:00** EDT

Sunday: **closed**

Address



Harbour Towne Marina, 850 NE 3rd St,
STE 213, Dania, FL 33004