

2012 HATTERAS 60 MY TIRESUM — HATTERAS



Builder: HATTERAS

Year Built: 2012

Model: Cruising Yacht

Price: PRICE ON APPLICATION

Location: United States

LOA: 60' 0" (18.29m)

Beam: 18' 2" (5.54m)

Max Draft: 4' 6" (1.37m)

Cruise Speed: 26 Kts. (30 MPH)

Max Speed: 30 Kts. (35 MPH)

Our experienced yacht broker, Andrey Shestakov, will help you choose and buy a yacht that best suits your needs 2012 Hatteras 60 MY Tiresum — HATTERAS from our catalogue. Presently, at Shestakov Yacht Sales Inc., we have a wide variety of yachts available on our sale's list. We also work in close contact with all the big yacht manufacturers from all over the world.

If you would like to buy a yacht 2012 Hatteras 60 MY Tiresum — HATTERAS or would like help answering any questions concerning purchasing, selling or chartering a yacht, please call +1(954)274-4435

TABLE OF CONTENTS

TABLE OF CONTENTS	2
SPECIFICATIONS	3
Basic Information	3
Dimensions	3
Speed, Capacities and Weight	3
Accommodations	3
Hull and Deck Information	3
Engine Information	4
DETAILED INFORMATION	5
Options	5
Standard Features	5
Exclusions	6
Disclaimer	6
PHOTOS	7
P7640702	11
P7640704	11
P7640709	11
CONTACTS	12
Contact details	12
Telephones	12
Office hours	12
Address	12

SPECIFICATIONS

Basic Information

Category: Cruising Yacht

Model Year: 2012

Year Built: 2012

Country: United States

Coast Guard #: 1252909

Dimensions

LOA: 60' 0" (18.29m)

Beam: 18' 2" (5.54m)

Max Draft: 4' 6" (1.37m)

Speed, Capacities and Weight

Cruise Speed: 26 Kts. (30 MPH)

Max Speed: 30 Kts. (35 MPH)

Displacement: 85500 Pounds

Water Capacity: 250 Gallons

Holding Tank: 100 Gallons

Fuel Capacity: 1000 Gallons

Accommodations

Total Cabins: 3

Hull and Deck Information

Hull Material: Fiberglass

Engine Information

Engines: 2

Manufacturer: CAT

Model: C18

Engine Type: Inboard

Fuel Type: Diesel

DETAILED INFORMATION

Options

Upgraded interior stairwell Custom painted blue hull Custom seating aft fly bridge Wireless Yacht Controller and joystick system Custom window / wiper system on fly bridge

Mahogany Satin CAT C-18 1150 BHP 19" LCD TV - Bow Strm 19" LCD TV - Port Strm Aft Deck to Bustle Gate lieu std gate Aft Deck Transom Bustle Door Aft Deck Hatch to Flybridge Aft Utility Room Freezer Davit, 1000 lb, Hydraulic (AVAILABLE OPTION) Flybridge Air conditioning Flybridge Grill w/Cabinet Fwd Exterior Entry Door Stbd Galley-Appliance fronts matching wood Galley Icemaker Galley Oven Galley-Upright Dishwasher Galley Wine Cooler Generator Exhaust/Water Separator Hand-held Shower, Aft Deck Install Thru Hulls and Wire for later watermaker install Interior Stairs and Hatch Access to Flybridge Mattress, King Mattress, Queen Oil Change System, Eng/Gear/Gen Optional Boot Top Color Painted Engine Room Plexi Mirrored Ceiling, Mstr Head Prop Removal/Installation Tool Refrigerator/Icemaker, Flybridge Retractable Shorecord Sunpad Cushions for Fwd Seat Teak Aft Deck Teak Aft Deck to Boat Deck Teak Aft Deck to Swim Platform Wash Down, Freshwater, Bow deck Washer/Dryer, Companionway Water Delivery Kit BRIDGE DECK - TEAK HALF TUNA TOWER CUSTOM ELECTRONICS CUSTOM/DECOR

Standard Features

Exterior Finish / Construction • Isophthalic gelcoat, exterior layer, white (all areas except hull) • Blister resistant vinylester gelcoat, clear (hull) • Hull and superstructure painted with a premium linear polyester/polyurethane coating for improved cosmetics & increased durability • Polymer/copper based anti-fouling bottom paint • Boot stripe, linear polyester/polyurethane coating • Decks, non-skid surface, polyurethane paint with polymeric beads • Solid fiberglass, resin-infused hull bottom with premium vinylester resins • Hull sides of resin infused composite construction with PVC foam core and premium vinylester resins • Solid fiberglass, resin-infused longitudinal stringers • Steel resin infused into longitudinal stringers at key locations to create engine foundations • Bulkheads, athwartships and interior decks of resin-infused composite construction using PVC foam core Hardware and Miscellaneous • Wood cabinetry with a satin polyester finish in African mahogany and wenge trim • All hardware polished chrome with satin chrome in galley • 60 pound plow anchor, anchor line and deck hawse pipe • Windlass, Maxwell RC10 with 25 feet of acculoy hot-dipped galvanized chain and 300 feet of rope with deck mounted control switches • Bow thruster, 26 hp electric, with a single 24 volt bank of heavy-duty, 12 volt marine batteries (2) and charger • Two polished stainless-steel springline cleats with chafing strips, through bolted in aluminum backing plates • Polished stainless-steel bow cleats, through bolted in aluminum backing plates • Polished stainless-steel stern cleats, through bolted in aluminum backing plates • Welded and polished stainless-steel rails on bow, side deck and flybridge, drilled and tapped in aluminum backing plates • Fog bell • Horn • Zincs on rudders and shafts • Stern staffs with ensign • Black braided mooring lines (6) • Alloy 22 high-strength propeller

shafts• Manganese bronze driplless rudder seals• Driplless shaft seals• Life jackets (6)• Life ring• Portable “drychem” fire extinguishers (6), U.L. approved type in compliance with United States Coast Guard and ABYC standards• Stainless-steel trim tabs• Integral manganese bronze struts• Stainless-steel rudders• Propellers, Nibral high performance• MarQuipt sea ladder with storage brackets• Walk around side decks• Black fenders (3)• Deck plates for fuel and water fills and waste pump-out• Engine exhaust exits through hull side near transom• Anchor locker on bow deck

Exclusions

Owner's personal belongings.

Disclaimer

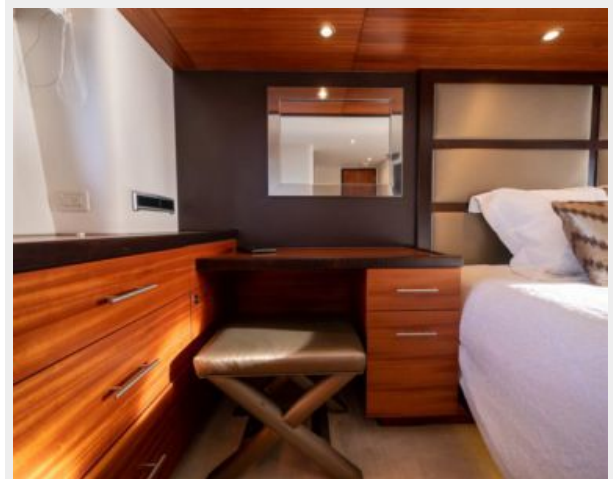
The Company offers the details of this vessel or yacht in good faith but cannot guarantee or warrant the accuracy of this information nor warrant the condition of the vessel. A buyer should instruct his representatives, agents, or his surveyors, to investigate such details as the buyer desires validated. This vessel or yacht is offered subject to prior sale, price change, or withdrawal without notice.

PHOTOS









P7640702



P7640704



P7640709



CONTACTS

Andrey Shestakov, leading yacht broker of the sales department of Shestakov Yacht Sales Inc. Shestakov Yacht Sales Inc., the official representative of the Miami/Fort Lauderdale FL headquarters.

Contact details

Email: andrey@shestakovyachtsales.com

Web: shestakovyachtsales.com/en/

Telephones

USA: +1(954)274-4435

Office hours

Monday – Saturday: **9:00 - 21:00** EDT

Sunday: **closed**

Address



Harbour Towne Marina, 850 NE 3rd St,
STE 213, Dania, FL 33004