

PAMELA ANNE — GRAND BANKS



Builder: GRAND BANKS

Year Built: 1973

Model: Trawler Yacht

Price: PRICE ON APPLICATION

Location: United States

LOA: 36' 0" (10.97m)

Beam: 12' 8" (3.86m)

Max Draft: 4' 0" (1.22m)

Cruise Speed: 7 Kts. (8 MPH)

Max Speed: 9 Kts. (10 MPH)

Our experienced yacht broker, Andrey Shestakov, will help you choose and buy a yacht that best suits your needs **Pamela Anne — GRAND BANKS** from our catalogue. Presently, at Shestakov Yacht Sales Inc., we have a wide variety of yachts available on our sale's list. We also work in close contact with all the big yacht manufacturers from all over the world.

If you would like to buy a yacht **Pamela Anne — GRAND BANKS** or would like help answering any questions concerning purchasing, selling or chartering a yacht, please call **+1(954)274-4435**

TABLE OF CONTENTS

TABLE OF CONTENTS	2
SPECIFICATIONS	5
Overview	5
Basic Information	5
Dimensions	5
Speed, Capacities and Weight	5
Accommodations	5
Hull and Deck Information	6
Engine Information	6
DETAILED INFORMATION	7
MAIN DESCRIPTION	7
36' GRAND BANKS WALKTHROUGH	7
36' GRAND BANKS SALON	7
36' GRAND BANKS ACCOMODATIONS	7
36' GRAND BANKS GALLEY	7
36' GRAND BANKS ELECTRONICS	8
36' GRAND BANKS ELECTRICAL SYSTEM	8
36' GRAND BANKS ENGINE/MECHANICAL EQUIPMENT	8
36' GRAND BANKS DECK EQUIPMENT	8
36' GRAND BANKS RECENT MAINTENANCE	8
36' GRAND BANKS RECENT REPAIRS	8
36' GRAND BANKS RECENT UPGRADES	9
36' GRAND BANK SELLER EXCLUSIONS	9
DISCLAIMER	9
Exclusions	9
Disclaimer	9
PHOTOS	10
2	10

1	10
3	10
4	10
5	10
6	10
7	11
8	11
9	11
10	11
11	11
12	11
14	12
13	12
15	12
16	12
17	12
18	12
19	13
20	13
21	13
22	13
24	14
23	14
25	14
26	14
27	15
28	15
30	15
29	15

32	16
31	16
34	16
33	16
35	17
36	17
38	17
37	17
40	18
39	18
41	18
42	18
43	18
44	18
45	19
CONTACTS	20
Contact details	20
Telephones	20
Office hours	20
Address	20

SPECIFICATIONS

Overview

A beautiful example of a classic Grand Banks, PAMELA ANNE has undergone an extensive re-fit over the last three years including all new tanks, new a/c units, new stainless steel shafts, new heat exchangers and much, much more. She has been completely re-painted top to bottom and inside and out. All her teak has been sanded and six coats of varnish applied. All the new owner has to do is add cushions in the salon and staterooms and she's ready to cruise anywhere!

Basic Information

Category: Trawler Yacht	Model Year: 1973
Year Built: 1973	Country: United States

Dimensions

LOA: 36' 0" (10.97m)	Beam: 12' 8" (3.86m)
Max Draft: 4' 0" (1.22m)	Clearance: 13' 1" (3.99m)

Speed, Capacities and Weight

Cruise Speed: 7 Kts. (8 MPH)	Max Speed: 9 Kts. (10 MPH)
Water Capacity: 140 Gallons	Holding Tank: 40 Gallons
Fuel Capacity: 350 Gallons	

Accommodations

Total Cabins: 1	Total Berths: 5
Total Heads: 1	

Hull and Deck Information

Hull Material: Fiberglass

Engine Information

Engines: 1

Manufacturer: Ford

Model: Ford Lehman

Engine Type: Inboard

Fuel Type: Diesel

DETAILED INFORMATION

MAIN DESCRIPTION

A beautiful example of a classic Grand Banks, PAMELA ANNE has undergone an extensive re-fit over the last three years including all new tanks, new a/c units, new stainless steel shafts, new heat exchangers and much, much more. She has been completely re-painted top to bottom and inside and out. All her teak has been sanded and six coats of varnish applied. All the new owner has to do is add cushions in the salon and staterooms and she's ready to cruise anywhere!

36' GRAND BANKS WALKTHROUGH

Entering from the aftdeck, the salon is accessed from the starboard side door. The galley is on the port side of the salon opposite the door, and the lower helm is on the right. Aft of the salon is the master stateroom with one queen size berth and a single berth. Forward of the salon is the guest stateroom, featuring two berths. The upper helm is surrounded by a full Eisenglass enclosure with curtains and ample seating.

36' GRAND BANKS SALON

The salon features seating aft of the galley on the port side, with a 21-inch smart TV. The starboard side features additional wraparound seating with a hinged table that can be opened for dining and closed to permit more room. All teak has been beautifully re-finished and offers a handsome contrast to the freshly-painted walls that are finished in a brilliant white.

36' GRAND BANKS ACCOMODATIONS

PAMELA ANNE offers a full-beam master stateroom aft with a double berth and a single berth. A 21-inch smart TV is mounted over the double berth. There is a bureau in the aft portion of the stateroom and additional storage is provided under the single berth as well as in a separate closet. There is an ensuite head on the starboard side of the master stateroom. The master stateroom can be separately accessed from the stern deck. Forward of the salon is the guest stateroom featuring two single berths and a separate washroom.

36' GRAND BANKS GALLEY

The galley is located in the forward portion of the salon on the port side and features two refrigerators. There is a stainless steel sink and ample counter space for the chef. Storage is provided both over the counter and under the sink.

36' GRAND BANKS ELECTRONICS

* Raymarine Axion 8 chart plotter* AIS* Autopilot * Raymarine VHF at both helms* Radar* XM radio* Digital TV antenna* Two 21-inch smart TV's

36' GRAND BANKS ELECTRICAL SYSTEM

* Onan 8kw generator* New shore power outlet * Rewired 12 volt system panel * Xantrex Freedom Sw3012 12 volt 3000 watt inverter/charger* LED lighting* Six AGM batteries* GFI outlets* Galvonic isolators

36' GRAND BANKS ENGINE/MECHANICAL EQUIPMENT

* Twin Ford Lehman 120 hp engines - estimated 3500 hours each* Three zone reverse cycle ac/heat (1600 BTU)* AC digital controls* Hydraulic steering* Oil change system* Electric 11 gallon water heater* Electric toilet

36' GRAND BANKS DECK EQUIPMENT

* Lofrans 100 vertical windlass* Imtra two-function handheld windlass remote* Rocna 44-pound galvanized fixed shank scoop anchor* 250 feet of anchor rope* 30 feet of anchor chain

36' GRAND BANKS RECENT MAINTENANCE

* Bottom sanding, blister repair, barrier coating and antifouling paint (2018)* Paint above the waterline (2018)* Interior re-painted white (2018)* All interior and exterior teak sanded; six coats of varnish applied (2018)* New zincs (2019)* Cooling system flushed (2019)* New fuel filters (2018)

36' GRAND BANKS RECENT REPAIRS

* New motor mounts (2020)* New exhaust elbow and hoses (2019)* New fuel lines (2018)* New four blade props installed - three blade props retained as spares (2018)* New stainless steel shafts (2018)* New Groco sea strainers (2019)* New bilge pumps (2018)* New flex plates (2019)* New electric 11-gallon water heater (2018)* New fore and aft 1600 AC units (2018)* New head gaskets (2019)* New valves installed after machining heads (2019)* New engine hoses (2019)* New injectors (2019)* New water lines (2019)* New holding tank (2018)* New holding tank lines (2019)* New 140 gallon water tanks (2018)* New Johnson raw water pump (2018)* New fuel lift pumps (2019)* New transducer (2018)* New cutlass bearings (2018)* New marine grade aluminum fuel tanks (2018)* New Galvanic isolators (2018)* New shore power outlet (2018)* New wiring in 12-volt panel (2018)* New water pump (2018)* New anchor light (2018)*

New oil coolers (2018)* New heat exchangers (2019)* New starters (2019)* New valve cover gasket (2018)* New throttle shaft seals (2019)* New oil caps (2019)* New bell hosing (2019)* New alternators (2019)* New raw water high temp alarm (2018)

36' GRAND BANKS RECENT UPGRADES

* Oil change system (2020)* Stainless steel trumpet electric horn (2018)* Electric toilet (2018)* AC digital controls (2018)* Hydraulic steering with autopilot (2018)* LED lights (2019)* Freezer mount installed on fly bridge (2018)* Six AGM battery cable shut off switches (2018)* Full fly bridge bimini with curtains (2018)* Wash down for anchor and decks (2018)* Rocna 44 pound galvanized fixed shank scoop anchor (2018)* Chain - 30 feet (2018)* Anchor rope - 250 feet (2018)* Lofrans 100 vertical windlass (2018)* Imtra 2-function handheld windlass remote (2018)* Phifer Tech window covers (2018)* Xantrex Freedom Sw3012 12volt 3000 watt inverter/charger (2018)* Bronze Grand Banks step plates (2018)* Bronze Grand Banks name plates (2018)* XM radio (2018)* Marine radio at both steering station (2019)* Digital TV antenna (2019)* Two 21-inch smart TV's* Raymarine Axiom 9 chart plotter (2018)* AIS (2018)

36' GRAND BANK SELLER EXCLUSIONS

Galley items and equipment.

DISCLAIMER

The Company offers the details of this vessel in good faith but cannot guarantee or warrant the accuracy of this information nor warrant the condition of the vessel. A buyer should instruct his agents, or his surveyors, to investigate such details as the buyer desires validated. This vessel is offered subject to prior sale, price change, or withdrawal without notice.

Exclusions

Owner's personal belongings.

Disclaimer

The Company offers the details of this vessel or yacht in good faith but cannot guarantee or warrant the accuracy of this information nor warrant the condition of the vessel. A buyer should instruct his representatives, agents, or his surveyors, to investigate such details as the buyer desires validated. This vessel or yacht is offered subject to prior sale, price change, or withdrawal without notice.

PHOTOS

1



2



3



4



5



6



7



8



9



10



11



12



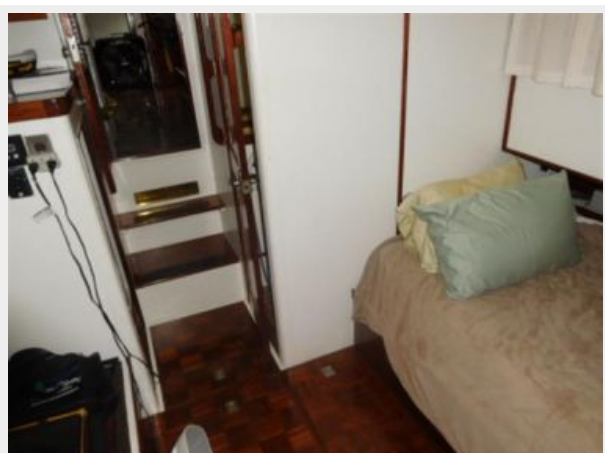
13



14



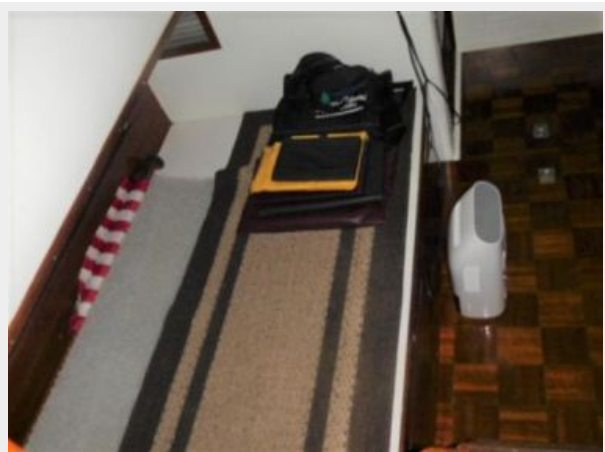
15



16



17



18



19



20



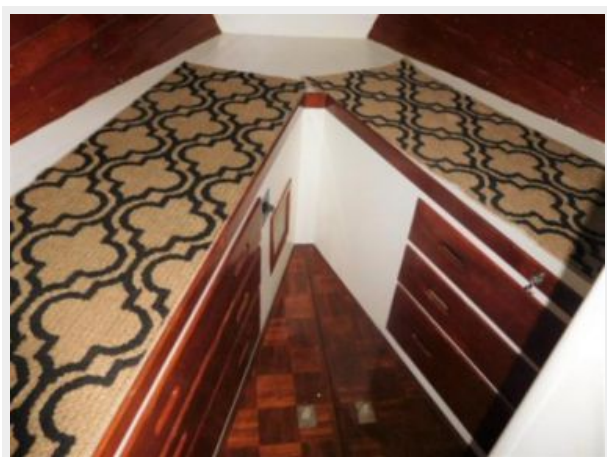
21



22



23



24



25



26



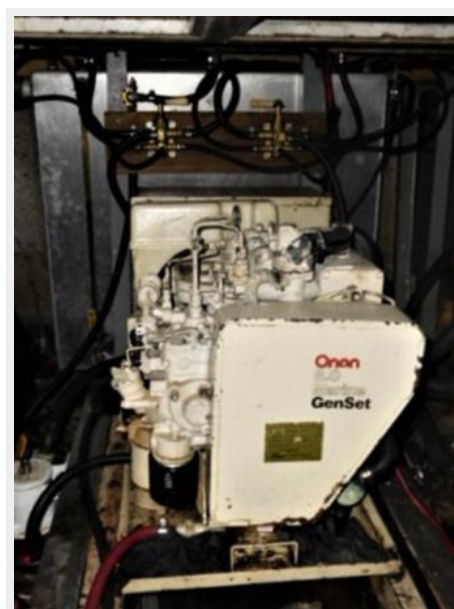
27



28



30



29



31



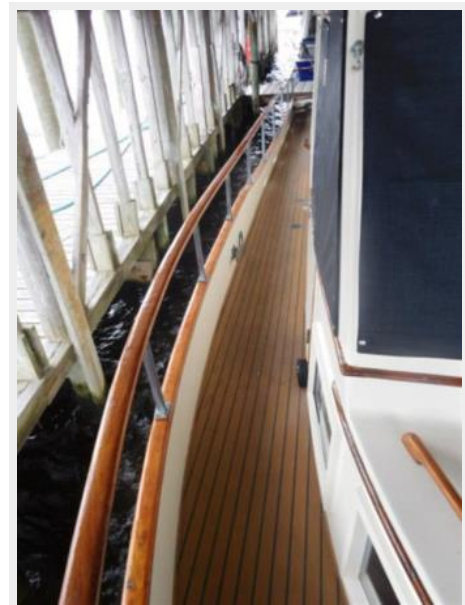
32



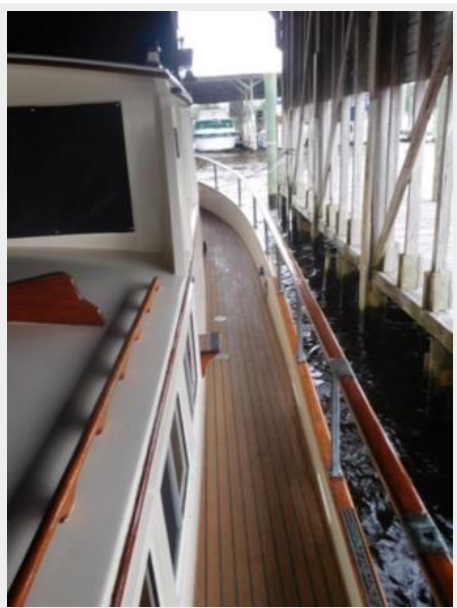
33



34



35



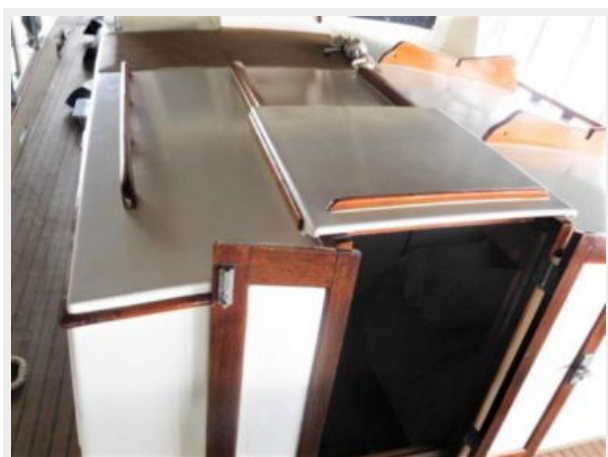
36



38



37



39



40



41



42



43



44



45



CONTACTS

Andrey Shestakov, leading yacht broker of the sales department of Shestakov Yacht Sales Inc. Shestakov Yacht Sales Inc., the official representative of the Miami/Fort Lauderdale FL headquarters.

Contact details

Email: **andrey@shestakovyachtsales.com**

Web: shestakovyachtsales.com/en/

Telephones

USA: **+1(954)274-4435**

Office hours

Monday – Saturday: **9:00 - 21:00 EDT**

Sunday: **closed**

Address



Harbour Towne Marina, 850 NE 3rd St,
STE 213, Dania, FL 33004