

PAMELA ANNE — GRAND BANKS



Судостроитель: GRAND BANKS

Год постройки: 1973

Модель: Trawler Yacht

Цена: **ЦЕНА ЯХТЫ ПО ЗАПРОСУ**

Местонахождение: United States

Длина общая: 36' 0" (10.97m)

Ширина: 12' 8" (3.86m)

Макс. осадка: 4' 0" (1.22m)

Крейс. скорость: 7 Kts. (8 MPH)

Макс. скорость: 9 Kts. (10 MPH)

Купить **Pamela Anne — GRAND BANKS** а также выбрать подходящую вам яхту из нашего каталога яхт вам поможет опытный яхтенный брокер Андрей Шестаков. На сегодняшний день компания **Shestakov Yacht Sales Inc.** имеет большое количество яхт в собственном списке продаж, а также тесно сотрудничает со всеми крупными яхтенными производителями по всему миру.

Для того чтобы купить яхту **Pamela Anne — GRAND BANKS** а также проконсультироваться по любому вопросу связанному с покупкой, продажей, чартером яхт позвоните по телефону **+7(918)465-66-44**.

ОГЛАВЛЕНИЕ

ОГЛАВЛЕНИЕ	2
ХАРАКТЕРИСТИКИ	5
Обзор	5
Основная информация	5
Размеры	5
Скорость, вместимость и масса	5
Размещение	5
Корпус и палуба	6
Информация о двигателе	6
ПОДРОБНОЕ ОПИСАНИЕ	7
MAIN DESCRIPTION	7
36' GRAND BANKS WALKTHROUGH	7
36' GRAND BANKS SALON	7
36' GRAND BANKS ACCOMODATIONS	7
36' GRAND BANKS GALLEY	7
36' GRAND BANKS ELECTRONICS	8
36' GRAND BANKS ELECTRICAL SYSTEM	8
36' GRAND BANKS ENGINE/MECHANICAL EQUIPMENT	8
36' GRAND BANKS DECK EQUIPMENT	8
36' GRAND BANKS RECENT MAINTENANCE	8
36' GRAND BANKS RECENT REPAIRS	8
36' GRAND BANKS RECENT UPGRADES	9
36' GRAND BANK SELLER EXCLUSIONS	9
DISCLAIMER	9
Исключения	9
Отказ от ответственности	9
ФОТОГРАФИИ	10
2	10

1	10
3	10
4	10
5	10
6	10
7	11
8	11
9	11
10	11
11	11
12	11
14	12
13	12
15	12
16	12
17	12
18	12
19	13
20	13
21	13
22	13
24	14
23	14
25	14
26	14
27	15
28	15
30	15
29	15

32	16
31	16
34	16
33	16
35	17
36	17
38	17
37	17
40	18
39	18
41	18
42	18
43	18
44	18
45	19
КОНТАКТЫ	20
Контактная информация	20
Телефоны	20
Время работы	20
Адрес	20

ХАРАКТЕРИСТИКИ

Обзор

A beautiful example of a classic Grand Banks, PAMELA ANNE has undergone an extensive re-fit over the last three years including all new tanks, new a/c units, new stainless steel shafts, new heat exchangers and much, much more. She has been completely re-painted top to bottom and inside and out. All her teak has been sanded and six coats of varnish applied. All the new owner has to do is add cushions in the salon and staterooms and she's ready to cruise anywhere!

Основная информация

Тип судна: Trawler Yacht

Модельный год: 1973

Год постройки: 1973

Страна: United States

Размеры

Длина общая: 36' 0" (10.97m)

Ширина: 12' 8" (3.86m)

Макс. осадка: 4' 0" (1.22m)

Трапы: 13' 1" (3.99m)

Скорость, вместимость и масса

Крейс. скорость: 7 Kts. (8 MPH)

Макс. скорость: 9 Kts. (10 MPH)

Вместимость воды: 140 Gallons

Вместимость сточного бака: 40 Gallons

Объем топливного бака: 350 Gallons

Размещение

Всего кают: 1

Всего коек: 5

Всего ком. состава: 1

Корпус и палуба

Материал корпуса: Fiberglass

Информация о двигателе

Двигатели: 1

Производитель: Ford

Модель: Ford Lehman

Тип двигателя: Inboard

Тип топлива: Diesel

ПОДРОБНОЕ ОПИСАНИЕ

MAIN DESCRIPTION

A beautiful example of a classic Grand Banks, PAMELA ANNE has undergone an extensive re-fit over the last three years including all new tanks, new a/c units, new stainless steel shafts, new heat exchangers and much, much more. She has been completely re-painted top to bottom and inside and out. All her teak has been sanded and six coats of varnish applied. All the new owner has to do is add cushions in the salon and staterooms and she's ready to cruise anywhere!

36' GRAND BANKS WALKTHROUGH

Entering from the aftdeck, the salon is accessed from the starboard side door. The galley is on the port side of the salon opposite the door, and the lower helm is on the right. Aft of the salon is the master stateroom with one queen size berth and a single berth. Forward of the salon is the guest stateroom, featuring two berths. The upper helm is surrounded by a full Eisenglass enclosure with curtains and ample seating.

36' GRAND BANKS SALON

The salon features seating aft of the galley on the port side, with a 21-inch smart TV. The starboard side features additional wraparound seating with a hinged table that can be opened for dining and closed to permit more room. All teak has been beautifully re-finished and offers a handsome contrast to the freshly-painted walls that are finished in a brilliant white.

36' GRAND BANKS ACCOMODATIONS

PAMELA ANNE offers a full-beam master stateroom aft with a double berth and a single berth. A 21-inch smart TV is mounted over the double berth. There is a bureau in the aft portion of the stateroom and additional storage is provided under the single berth as well as in a separate closet. There is an ensuite head on the starboard side of the master stateroom. The master stateroom can be separately accessed from the stern deck. Forward of the salon is the guest stateroom featuring two single berths and a separate washroom.

36' GRAND BANKS GALLEY

The galley is located in the forward portion of the salon on the port side and features two refrigerators. There is a stainless steel sink and ample counter space for the chef. Storage is provided both over the counter and under the sink.

36' GRAND BANKS ELECTRONICS

* Raymarine Axion 8 chart plotter* AIS* Autopilot * Raymarine VHF at both helms* Radar* XM radio* Digital TV antenna* Two 21-inch smart TV's

36' GRAND BANKS ELECTRICAL SYSTEM

* Onan 8kw generator* New shore power outlet * Rewired 12 volt system panel * Xantrex Freedom Sw3012 12 volt 3000 watt inverter/charger* LED lighting* Six AGM batteries* GFI outlets* Galvonic isolators

36' GRAND BANKS ENGINE/MECHANICAL EQUIPMENT

* Twin Ford Lehman 120 hp engines - estimated 3500 hours each* Three zone reverse cycle ac/heat (1600 BTU)* AC digital controls* Hydraulic steering* Oil change system* Electric 11 gallon water heater* Electric toilet

36' GRAND BANKS DECK EQUIPMENT

* Lofrans 100 vertical windlass* Imtra two-function handheld windlass remote* Rocna 44-pound galvanized fixed shank scoop anchor* 250 feet of anchor rope* 30 feet of anchor chain

36' GRAND BANKS RECENT MAINTENANCE

* Bottom sanding, blister repair, barrier coating and antifouling paint (2018)* Paint above the waterline (2018)* Interior re-painted white (2018)* All interior and exterior teak sanded; six coats of varnish applied (2018)* New zincs (2019)* Cooling system flushed (2019)* New fuel filters (2018)

36' GRAND BANKS RECENT REPAIRS

* New motor mounts (2020)* New exhaust elbow and hoses (2019)* New fuel lines (2018)* New four blade props installed - three blade props retained as spares (2018)* New stainless steel shafts (2018)* New Groco sea strainers (2019)* New bilge pumps (2018)* New flex plates (2019)* New electric 11-gallon water heater (2018)* New fore and aft 1600 AC units (2018)* New head gaskets (2019)* New valves installed after machining heads (2019)* New engine hoses (2019)* New injectors (2019)* New water lines (2019)* New holding tank (2018)* New holding tank lines (2019)* New 140 gallon water tanks (2018)* New Johnson raw water pump (2018)* New fuel lift pumps (2019)* New transducer (2018)* New cutlass bearings (2018)* New marine grade aluminum fuel tanks (2018)* New Galvanic isolators (2018)* New shore power outlet (2018)* New wiring in 12-volt panel (2018)* New water pump (2018)* New anchor light (2018)*

New oil coolers (2018)* New heat exchangers (2019)* New starters (2019)* New valve cover gasket (2018)* New throttle shaft seals (2019)* New oil caps (2019)* New bell hosing (2019)* New alternators (2019)* New raw water high temp alarm (2018)

36' GRAND BANKS RECENT UPGRADES

* Oil change system (2020)* Stainless steel trumpet electric horn (2018)* Electric toilet (2018)* AC digital controls (2018)* Hydraulic steering with autopilot (2018)* LED lights (2019)* Freezer mount installed on fly bridge (2018)* Six AGM battery cable shut off switches (2018)* Full fly bridge bimini with curtains (2018)* Wash down for anchor and decks (2018)* Rocna 44 pound galvanized fixed shank scoop anchor (2018)* Chain - 30 feet (2018)* Anchor rope - 250 feet (2018)* Lofrans 100 vertical windlass (2018)* Imtra 2-function handheld windlass remote (2018)* Phifer Tech window covers (2018)* Xantrex Freedom Sw3012 12volt 3000 watt inverter/charger (2018)* Bronze Grand Banks step plates (2018)* Bronze Grand Banks name plates (2018)* XM radio (2018)* Marine radio at both steering station (2019)* Digital TV antenna (2019)* Two 21-inch smart TV's* Raymarine Axiom 9 chart plotter (2018)* AIS (2018)

36' GRAND BANK SELLER EXCLUSIONS

Galley items and equipment.

DISCLAIMER

The Company offers the details of this vessel in good faith but cannot guarantee or warrant the accuracy of this information nor warrant the condition of the vessel. A buyer should instruct his agents, or his surveyors, to investigate such details as the buyer desires validated. This vessel is offered subject to prior sale, price change, or withdrawal without notice.

Исключения

При продаже яхты исключаются личные вещи владельца.

Отказ от ответственности

Компания предоставляет описание судна или яхты добросовестно, но не может гарантировать точность этой информации, а также не ручается за техническое состояние. Покупатель должен проинструктировать своих агентов или оценщиков исследовать представленную информацию более подробно, по собственному желанию. Продажа судна или яхты, изменение цены или снятие с продажи будет происходить без предварительного уведомления.

ФОТОГРАФИИ

1



2



3



4



5



6



7



8



9



10



11



12



13



14



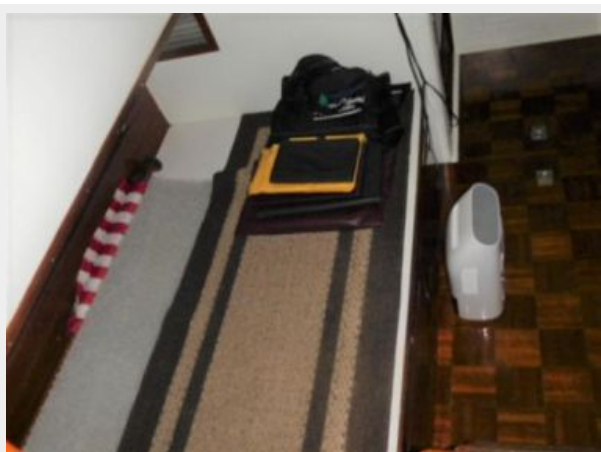
15



16



17



18



19



20



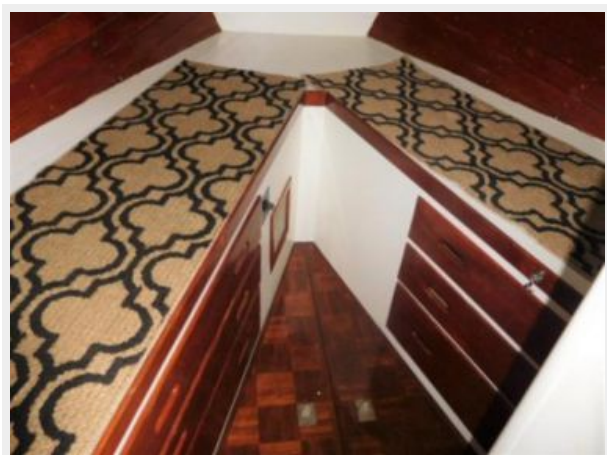
21



22



23



24



25



26



27

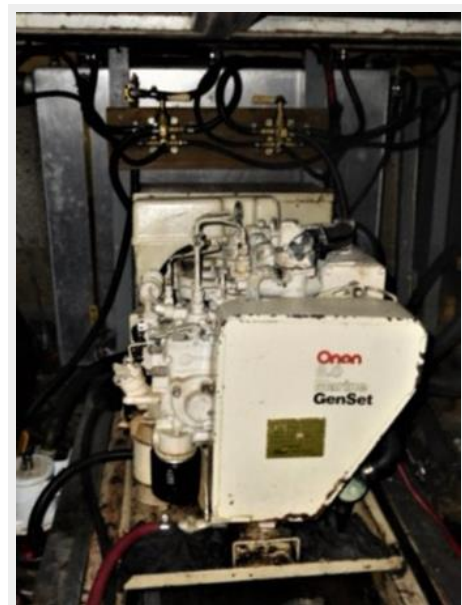


28



30

29



31



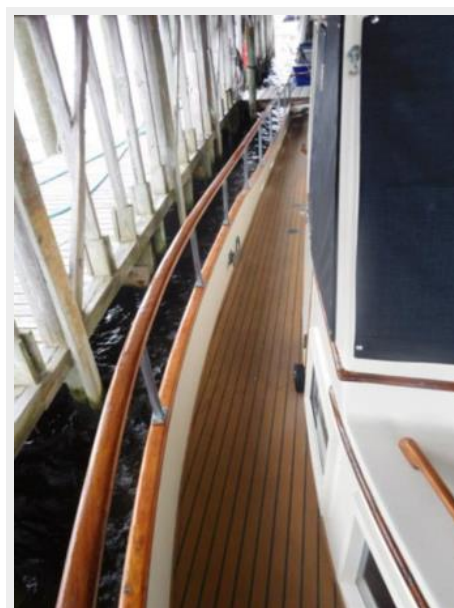
32



33



34



35



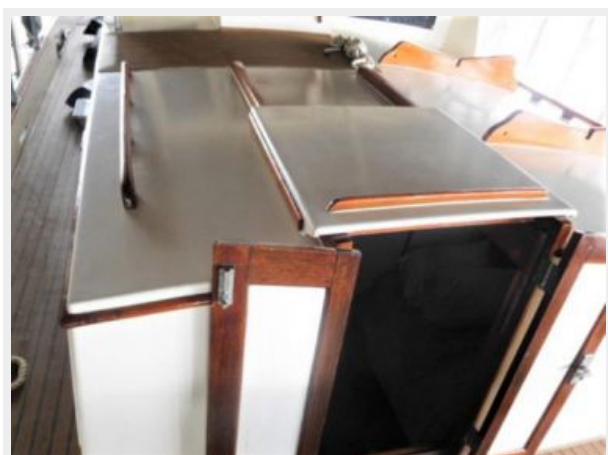
36



38



37



39



40



41



42



43



44



45



КОНТАКТЫ

Андрей Шестаков (Andrey Shestakov) – ведущий яхтенный брокер отдела продаж яхт и судов компании Shestakov Yacht Sales Inc. Официальный представитель Shestakov Yacht Sales Inc. для русскоговорящих клиентов в центральном офисе компании в Майами/Форт Лодердейл/Флорида/США.

Контактная информация

Email: andrey@shestakovyachtsales.com

Web: shestakovyachtsales.com

Телефоны

Краснодарский край: **+7(918)465-66-44**

США, Майами, Флорида: **+1(954)274-4435**

Время работы

Понедельник – Суббота: **9:00 - 21:00**
EDT

Воскресенье: **Закрито**

Адрес



Harbour Towne Marina, 850 NE 3rd St,
STE 213, Dania, FL 33004