

ELYSIUM — DOMINATOR



Builder: DOMINATOR

Year Built: 2009

Model: Motor Yacht

Price: PRICE ON APPLICATION

Location: United States

LOA: 95' 0" (28.96m)

Beam: 22' 0" (6.71m)

Max Draft: 7' 11" (2.41m)

Our experienced yacht broker, Andrey Shestakov, will help you choose and buy a yacht that best suits your needs **ELYSIUM — DOMINATOR** from our catalogue. Presently, at Shestakov Yacht Sales Inc., we have a wide variety of yachts available on our sale's list. We also work in close contact with all the big yacht manufacturers from all over the world.

If you would like to buy a yacht **ELYSIUM — DOMINATOR** or would like help answering any questions concerning purchasing, selling or chartering a yacht, please call **+1(954)274-4435**

TABLE OF CONTENTS

TABLE OF CONTENTS	2
SPECIFICATIONS	4
Overview	4
Basic Information	4
Dimensions	4
Speed, Capacities and Weight	4
Accommodations	4
Hull and Deck Information	5
Engine Information	5
DETAILED INFORMATION	6
Fly Bridge	6
Bow Area	6
Deck Equipment	6
Main Salon	6
Staterooms	7
Galley	7
Enterntainment	7
Navigation and Electronics	8
Engine Room	8
Crew Area	8
Exclusions	9
Disclaimer	9
PHOTOS	10
CONTACTS	22
Contact details	22
Telephones	22
Office hours	22
Address	22

SPECIFICATIONS

Overview

2009 Dominator 95' Motor Yacht

- **MTU M93 with 1813 hours (2000 hour service already completed)**
- **Huge Hydraulic Swim Platform**
- **Private Teak Swim & Sun Platform Off Master Stateroom**
- **Massive Flybridge with Bar and Retractable Top**
- **Jacuzzi and Sunpad on Bow**

Basic Information

Category: Motor Yacht

Sub Category: Flybridge

Model Year: 2009

Year Built: 2009

Country: United States

Fly Bridge: Yes

Dimensions

LOA: 95' 0" (28.96m)

Beam: 22' 0" (6.71m)

Max Draft: 7' 11" (2.41m)

Speed, Capacities and Weight

Water Capacity: 792 Gallons

Holding Tank: 211 Gallons

Fuel Capacity: 3698 Gallons

Accommodations

Total Cabins: 4

Total Heads: 5

Hull and Deck Information

Hull Material: Fiberglass

Engine Information

Engines: 2

Manufacturer: MTU

Model: M93

Engine Type: Inboard

Fuel Type: Diesel

DETAILED INFORMATION

Fly Bridge

- Cockpit
- Cushioned Couches
- Lounge Seating
- Dining Table
- LPG Grill
- Wet Bar with Bar Chairs
- Vitrefrigo RF Refrigerator

Bow Area

- Large Hot Tub
- Sun Pads
- Cushioned Seating
- Cocktail Tables
- Retractable Sun Awning

Deck Equipment

- Stainless Steel Stanchions and Rail System
- Stainless Steel Fairleads at Stern (2)
- Lofrans Anchor Windlasses (2)
- FRP Deck Boxes Located on Foredeck (2)
- Electric Transom Garage Hatch
- Stainless Steel Hand Rails
- Fixed Stainless Steel Cleats (12)
- Popup Stainless Steel Cleats (2)
- Davit Besenzoni Winch with Stainless Steel Cable
- Wireless Remote Control for Garage

Main Salon

- Leather Couch
- Leather Salon Chairs (3)
- Leather Ottomans (2)
- Glass Dinette Table with Seating for Eight

Staterooms

- Four Staterooms

Full Beam Master King Stateroom

- Leather Cushioned Bench Seat
- Makeup Table with Stool
- Television
- CISA Safe
- Ensuite Including Separate Shower and Glass Front Bathing Tub
- Access to Owners Personal Teak Private Swim and Sun Platform

VIP Queen

- Leather Couch
- Television
- Ensuite with Shower

Guest Queen

- Mirrored Closet
- Ensuite with Shower

Guest Side by Side Twins

- Mirrored Closet
- Ensuite with Shower

Galley

- Stainless Steel Sinks (2)
- Frigidaire Refrigerator Freezer
- Four Burner Miele Glass Stove Top
- Miele Oven
- Miele Dishwasher
- Galley Wine Coolers (3)
- NuWave Ice Maker
- Vitrifrigo Ice Maker

Entertainment

- New Direct TV Intellian System
- Kenwood AM FM CD Players (3)

- Cockpit Speakers (4)
- Cabin Speakers (28)
- KVH Tracvision 11 Satellite Controller
- Kaleidoscope Videoworks (3)

Navigation and Electronics

- ICOM CommandMic VHF Radio
- Furuno NXT Radar
- Simrad Navigation GPS Gauge
- Furuno Chart Plotter
- Navicontrol AP3003 Gold Autopilots (2)
- Speed Over Ground on GPS Speedlog
- Simrad Navigation Depth Gauge
- Furuno Fish Finder
- White Star Compass
- Sailor Satellite Phone
- CCTV Camera (8)

Engine Room

- Main Engines (2) MTU 16V2000 M93
- Generator (2) Cummins Onan Model MDDCF7371369 (Starboard 4,016 hours; Port 3,890 hours)
- Chillers (2) with Ten Zones
- American Bow Thruster
- American Stern Thruster
- Rule Bilge Pumps with RuleAMatic Float Switches (6)
- ZF Marine Model ZF 3060 V Transmission
- V-Drives
- AC Power: 125/250 100 amp Inlets with Glendinning Cable Master Shorepower Electric Reels
- DC Power: 12 and 24 volt
- Fuel: 3,698 Gallons in Main Tank; 528 Gallons in Day Tank
- Fresh Water: 792 Gallons
- Holding Tank: 211 Gallons

Crew Area

- Three Cabins; Single Berth Cabin (1), Twin Bunk Cabin (2)
- Two Heads

Exclusions

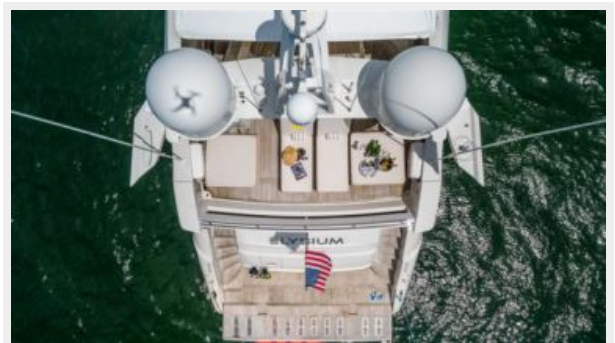
Owner's personal belongings.

Disclaimer

The Company offers the details of this vessel or yacht in good faith but cannot guarantee or warrant the accuracy of this information nor warrant the condition of the vessel. A buyer should instruct his representatives, agents, or his surveyors, to investigate such details as the buyer desires validated. This vessel or yacht is offered subject to prior sale, price change, or withdrawal without notice.

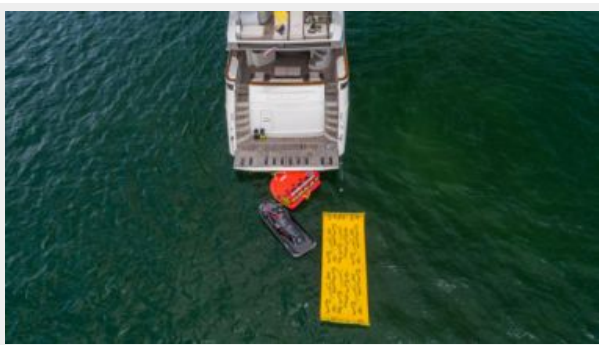
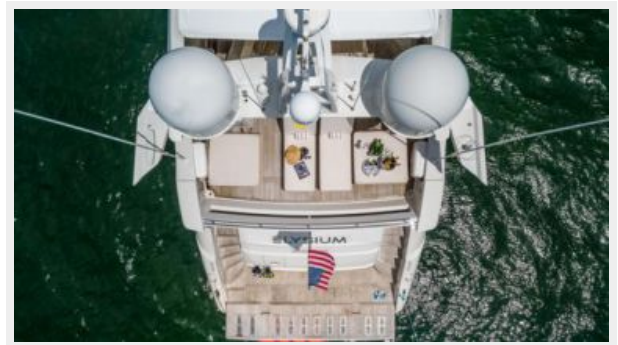
PHOTOS





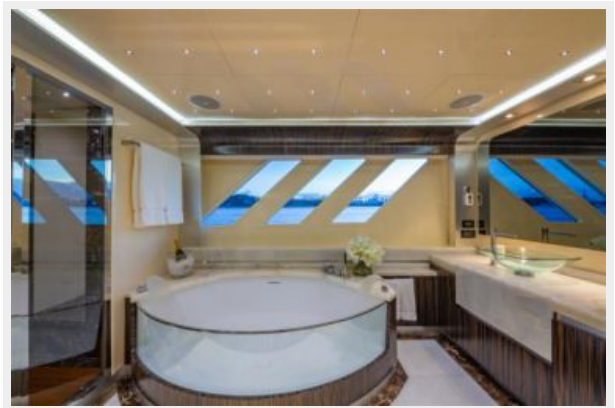


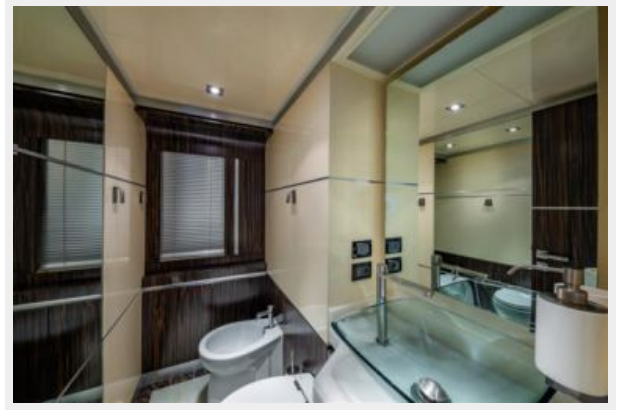




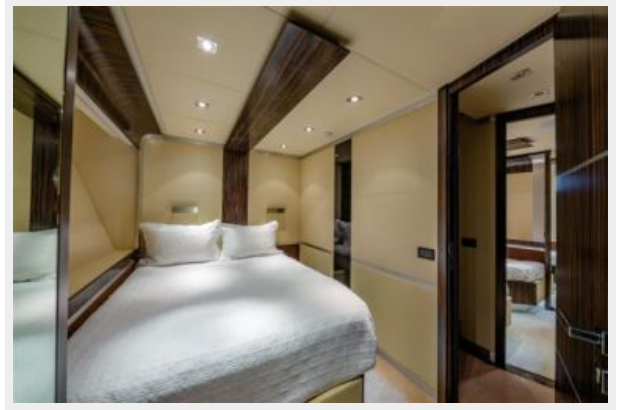














CONTACTS

Andrey Shestakov, leading yacht broker of the sales department of Shestakov Yacht Sales Inc. Shestakov Yacht Sales Inc., the official representative of the Miami/Fort Lauderdale FL headquarters.

Contact details

Email: andrey@shestakovyachtsales.com

Web: shestakovyachtsales.com/en/

Telephones

USA: +1(954)274-4435

Office hours

Monday – Saturday: **9:00 - 21:00** EDT

Sunday: **closed**

Address



Harbour Towne Marina, 850 NE 3rd St,
STE 213, Dania, FL 33004