

## NICOLE EVELYN — CHEOY LEE



**Судостроитель:** CHEOY LEE

**Год постройки:** 2003

**Модель:** Моторная яхта

**Цена:** **ЦЕНА ЯХТЫ ПО ЗАПРОСУ**

**Местонахождение:** United States

**Длина общая:** 125' 0" (38.10m)

**Ширина:** 25' 0" (7.62m)

**Макс. осадка:** 7' 2" (2.18m)

**Крейс. скорость:** 14 Kts. (16 MPH)

**Макс. скорость:** 21 Kts. (24 MPH)

Купить **NICOLE EVELYN — CHEOY LEE** а также выбрать подходящую вам яхту из нашего каталога яхт вам поможет опытный яхтенный брокер Андрей Шестаков. На сегодняшний день компания **Shestakov Yacht Sales Inc.** имеет большое количество яхт в собственном списке продаж, а также тесно сотрудничает со всеми крупными яхтенными производителями по всему миру.

Для того чтобы купить яхту **NICOLE EVELYN — CHEOY LEE** а также проконсультироваться по любому вопросу связанному с покупкой, продажей, чартером яхт позвоните по телефону **+7(918)465-66-44**.

# ОГЛАВЛЕНИЕ

ОГЛАВЛЕНИЕ	2
ХАРАКТЕРИСТИКИ	6
Обзор	6
Основная информация	6
Размеры	6
Скорость, вместимость и масса	6
Размещение	7
Корпус и палуба	7
Информация о двигателе	7
ПОДРОБНОЕ ОПИСАНИЕ	8
Overview	8
Main Salon	8
Galley	9
Master Stateroom	10
Guest Stateroom Foyer	10
VIP Stateroom - Aft Port	11
VIP Stateroom - Forward	11
Guest Stateroom - Forward	11
Guest Stateroom	11
Captain's Quarters	12
Crew Quarters	12
Pilothouse	12
Skylounge and Entertaining Deck	13
Flybridge	14
Aft Deck	14
Deck Equipment	14
Engine Room	14
Electrical Equipment	16

Construction	16
Safety and Fire Protection	17
Exclusions	17
Broker Comments	17
Исключения	18
Отказ от ответственности	18
<b>ФОТОГРАФИИ</b>	<b>19</b>
Main Salon	19
Main Salon	19
Dining Area	19
Dining Area	19
Dining Area	19
Dining Area	19
Master Stateroom Entrance	20
Master Study	20
Master Stateroom	20
Master Stateroom	20
Master Stateroom	20
Master Bath (His)	20
Master Bath (Hers)	21
Lower Deck Foyer	21
Lower Deck Foyer	21
Port Aft Guest Stateroom	21
Port Aft Guest Bath	21
Starboard Aft Guest Stateroom	21
Starboard Aft Guest Bath	22
Starboard Guest Stateroom	22
Starboard Guest Bath	22
Twin Guest Stateroom	22

---

Pilothouse	23
Pilothouse / Helm	23
Skylounge	23
Skylounge	23
Skylounge	23
Skylounge	23
Skylounge	24
Skylounge Dayhead	24
Bridge Deck	24
Bridge Deck Aft	24
Jacuzzi	24
Jacuzzi	24
Jacuzzi	25
Stairway to Upper Deck	25
Flybridge	25
Flybridge Sunlounge	25
Side Deck	25
Sunlounge / Upper Helm	25
Foredeck Sunlounge	26
Foredeck Sunlounge	26
Foredeck	26
Foredeck	26
Aft Deck	26
Aft Deck	26
Aft Deck	27
Galley	27
Galley	27
Galley	27
Crew Cabin	27

---

---

Crew Quarters	27
Crew Cabin	28
Layout	28
КОНТАКТЫ	29
Контактная информация	29
Телефоны	29
Время работы	29
Адрес	29

# ХАРАКТЕРИСТИКИ

## Обзор

NICOLE EVELYN has enjoyed three knowledgeable and discerning owners, who have all demanded that the yacht be kept in top condition. Built with an eye to longevity and versatility, the equipment list is impressive. As an example, deep sump 3512 Caterpillar engines, allow up to 1,000hrs between oil changes. Full Atlas shorepower, Alfa Laval fuel separator and the large Marquipt stern passarelle encourage international exploration. With her large main and upper deck windows combined with high ceiling heights, in combination with hand-rubbed Makore and Anigre millwork, colorful stonework and details, such as the soda-blue granite in the galley. The interior was updated in 2020 and is light, bright and fun. If you are looking for a well-equipped and maintained yacht, that is ready to go cruising, then NICOLE EVELYN represents one of the best values in her class!

## Основная информация

**Тип судна:** Моторная яхта

**Модельный год:** 2003

**Год постройки:** 2003

**Год обновления:** 2020

**Страна:** United States

## Размеры

**Длина общая:** 125' 0" (38.10m)

**Длина по ватерлинии:** 105' 0" (32.00m)

**Ширина:** 25' 0" (7.62m)

**Макс. осадка:** 7' 2" (2.18m)

## Скорость, вместимость и масса

**Крейс. скорость:** 14 Kts. (16 MPH)

**Дальность на крейсерской скорости:**  
3000

**Макс. скорость:** 21 Kts. (24 MPH)

**Вместимость воды:** 2000 Gallons

**Объем топливного бака:** 9800 Gallons

---

## Размещение

---

Всего кают: 5

Спальные места: 10

---

## Корпус и палуба

---

Материал корпуса: Fiberglass

---

## Информация о двигателе

---

Двигатели: 2

Производитель: Caterpillar

Модель: 3512B

Тип двигателя: Inboard

Тип топлива: Diesel

---

# ПОДРОБНОЕ ОПИСАНИЕ

---

## Overview

---

Built by the venerable Cheoy Lee shipyard for an experienced owner, with naval architecture and styling by Dutch master, Frank Mulder. Only her third owner, NICOLE EVELYN is a combination of volume and style, with great systems and redundancy.

Built to and still in ABS Class, the yacht comprises five staterooms all with ensuite bathrooms, with the full beam, on-deck master suite having dedicated his and hers bathrooms and a large well-appointed office.

The main salon offers ample seating and boasts a large formal dining area forward with round table seating for up to ten. The enormous sky lounge and the adjoining aft deck is a favorite place to hang out, with large screen TV, formal bar, under-cover dining table and open air hot-tub.

The operational flybridge, with a full steering and navigation station, has copious seating and a large convertible seating/sunpad area, which complements the two sunpads forward of the pilothouse, one deck below.

With more volume than a 130' Westport, this yacht has enjoyed a successful charter history due to her volume and design. Whether for private or charter use, a viewing of this yacht is highly recommended, she is ready to go cruising – you will not be disappointed!

## Main Salon

---

Entrance to the salon is either through double stainless steel sliding glass doors from the aft deck, or through port and starboard sliding Freeman doors from the side decks. The predominant side entrance is to starboard - opening into a granite-floored entryway with a stairway down to the guest staterooms and up to the Skylounge. The Owners' cabin, galley, and powder room are forward.

In the forward section of the main salon is a beautiful custom 7' diameter dining table (with lazy Susan) that seats 10 comfortably. There is a marble-topped buffet forward and long banquettes to port and starboard that are "fiddled" to house crystal, flatware, and china.



The dining salon is separated from the main salon by a four-posted entertainment center with TV. The seating area consists of 2 sofas and 2 chairs around a coffee table.

- Slide & dog Freeman watertight doors port & starboard forward with granite entrance
- 7' diameter dining table with 10 chairs
- Sculptured, hand-cut custom carpet
- Stainless steel framed tempered glass double sliding door to aft deck area
- Sony A/V - 300 CD player
- Hand rubbed Makore wood
- Marble buffet forward
- Generous storage cabinets port and starboard
- Satellite TV system with receivers and decoder
- Main deck powder room is located off starboard main entrance foyer
- 40" Samsung TV with Surround Sound

## Galley

---

- Sodalite blue granite tops with brushed-stainless backsplash tiles
- Miele induction stovetop
- Miele Diamante stainless dishwasher
- Braun trash compactor
- KitchenAid microwave
- Black & Decker toaster oven
- Icemaker
- 2x Gaggenau stainless ovens
- Access to crew quarters, centerline stairs forward
- Access to dining salon aft
- 2x Sub-Zero stainless refrigerators (700TR)
- Sub-Zero stainless freezer (700TFI)
- Franke Instahot water tap (filtered water)
- 3x Barstools at the breakfast bar
- Franke undermount stainless sink with Franke pull-away sprayer
- 2x Asko dishwashers
- 2x KitchenAid ovens (crew)
- KitchenAid side by side fridge/freezer (crew)
- Access to port side deck

Additional domestic appliances:

- Wine storage: (2) Subzero 424G/O wine storage units; (1) Subzero UC24CI refrigerator
- Additional fridge/freezer: (2) Subzero 259RP full size refrigerators; (1) Full size sub-zero 700TF freezer; (1) Summit under counter FS62 BI freezer

## Master Stateroom

---

The Master Stateroom is accessed from the starboard main entrance foyer. Proceed through exquisite, custom stained-glass double-entry doors that lead to the master suite foyer. In this area, a Miele washer and dryer are hidden behind hand-rubbed Makore millwork. There is a study area with a desk and two chairs. Proceeding forward past a cedar-lined walk-in closet into the stateroom, which offers a king-sized berth, additional hanging locker space, bureaus, a make-up vanity, and full entertainment system.

Her bath (to port) features Persian-gold marble vanity tops, floors, and bulkheads with a jacuzzi tub, W.C. and a 15" LCD TV. All hardware is THG/Pierre D'Arras polished gold with crystal faucets.

His bathroom (stbd) features the same marble & fixtures with a stall shower and W.C.

\*It should be noted that all showers have custom frameless doors.

- King-sized bed
- Double door stained glass entry
- Walk-in closet
- 3x Hanging lockers
- Miele front-loading washer and dryer
- Office area with desk and (2) chairs
- Sony 32" TV surround sound
- His full shower
- Hers Jacuzzi tub with 13" Sharp LCD TV
- Marble bathroom floors with mother of pearl inlays

## Guest Stateroom Foyer

---

All the guest staterooms are accessed from the main deck starboard entrance foyer via stairs that lead to a large guest foyer with blue granite-topped cabinetry that houses a Maytag washer and

dryer, fridge, and a stewardess locker.

The lower guest accommodations are finished in quarter figured Anigre wood and a selection of marble and granite. All guest cabins have fabric walls using the Whisper wall system for ease of replacement.

---

## VIP Stateroom - Aft Port

---

King VIP staterooms port and starboard are mirror images with island king beds. They are beautifully appointed with granite-topped bedside tables, full entertainment systems, including separate U.S. and Caribbean satellite decoders, hanging lockers, bureaus, and ensuite heads aft with corner Jacuzzi tub/showers with Millennium blue granite counters and floors.

- King-sized bed
- Jacuzzi tub/shower combo
- Sharp 25" flatscreen TV, iPod connection, Blu-ray DVD

---

## VIP Stateroom - Forward

---

- King size bed
- Sharp 25" flatscreen TV
- iPod hook-up and Blu-ray DVD player
- Granite vanity tops and floors
- Jacuzzi tub/shower combo (w/emergency exit to engine room)

---

## Guest Stateroom - Forward

---

- Queen berth
- Sharp 20" LCD TV
- Blue Macuba marble Jacuzzi tub with shower

---

## Guest Stateroom

---

- Twin berth
- Jacuzzi tub/shower
- Sharp 20" LCD TV
- iPod dock, Blu-ray DVD

- Blue Bahia granite

---

## Captain's Quarters

---

- Double berth
- TV and DVD
- Ensuite head with stall shower

---

## Crew Quarters

---

The crew quarters are nicely furnished with quarter-figured Anigre veneers and Corian countertops throughout. All cabins have TV/ DVDs. The crew mess is accessed from the main deck galley and features a full galley with Corian countertops, sink, insta-hot faucet, fridge with icemaker, microwave, toaster oven and 2 sets Miele washers and dryers. There is a remote alarm panel and TV with DVD player. A separate engineer's cabin is aft by the engine room.

- 5x Crew cabins individually decorated, all with ensuite heads
- TV/DVD/Wi-Fi, satellite
- Miele front-loading washer and dryer
- Crew mess table seats six
- Black & Decker toaster oven
- KitchenAid fridge/freezer with icemaker
- Remote alarm panel
- Access to Galley

---

## Pilothouse

---

The pilothouse features hand-rubbed, quartered Makore veneers with blistered Makore inlay panels. Port and starboard Freeman sliding watertight doors lead to the side decks and Portuguese bridge. The Portuguese bridge has two lounging areas (with adjustable chaise lounges) leading down a center catwalk to the foredeck.

- 2x Wing stations
- Semi-circular viewing sofa with roman gold marble top table (seats 6-7)
- PTZ cameras (new 2020) in the engine room and on aft deck
- FLIR infrared camera
- Sea 157 VHF
- ICOM M602 VHF

- VEI screen with TRANSAS navigation system
- Anschutz autopilot with jog control
- Satellite compass
- Triple Kahlenberg horns with M-511 control module alarm system
- Kobelt controls Thrane & Thrane mini-M satellite telephone
- KVH Fleet broadband 250 (Mini V-Sat)
- 3x Stidd chairs
- Office area with fax and computer
- Caterpillar CAT vision system
- 2x Furuno 96 mile ARPA color radars
- GSM SXM7T cellular system
- Panasonic PBX internal telephone system
- Wesmar HD800 Series sonar
- Furuno F150 AIS
- Rudder angle indicator
- 5x Sets wipers, intermittent
- Naiad Multi-Sea II roll stabilizer
- Sea 235 SSB radio
- Furuno NX-500 Navtex receiver
- KVH gyro-stabilized satellite TV antenna

---

## Skylounge and Entertaining Deck

---

The huge skylounge deck, aft of the pilothouse, is a great place for entertaining with a large formal bar in Makore and black galaxy granite that seats five. There is also a large semi-circular sofa around the big screen TV plus a card table and electronic player piano.

The powder room off the skylounge features a roman-gold marble top with a gravity glass bowl sink and roman-gold marble flooring.

Access to the covered deck is via double stainless sliding glass doors aft. This deck features a BBQ grill, table and chairs for 6-8 and a large, round 6-person spa with lots of built-in seating. Access via regular stairs to the flybridge deck above or aft deck below.

- Refrigerator and wine cooler
- Gas grill and fridge
- Access stairs to the main aft deck and flybridge
- Stainless steel framed tempered glass sliding doors to a large covered deck with table and six chairs

- 6 Person Jacuzzi with built-in seating

---

## Flybridge

---

The thoroughly functional flybridge features a fully instrumented helm, with duplication of all electronic equipment and systems. There are (3) Stidd helm chairs, life raft storage lockers port and starboard with quick release doors, each holding (2) 10-man life rafts. There is a semi-circular seating arrangement with a beautiful custom clear Corian inlaid table, which drops down to form a sunpad. Fiberglass hardtop. The bar is set up with sink, fridge, and gas grill. The 17' Zodiac Eclipse with 115 hp 4-stroke Yamaha is stowed aft using the 3,000# Marquipt davit.

---

## Aft Deck

---

This area is generously proportioned with a custom mahogany inlaid hi/lo in/out table that seats 10 comfortably.

There is not only access from the aft deck to the skylounge deck via regular stairs, but to the swim platform, walkaround decks and the engine room as well.

---

## Deck Equipment

---

- All hardware chromed brass, 316 stainless steel or anodized/painted aluminum
- 2x 400' lengths of 5/8" high test galvanized chain
- Freshwater washdown spigots located at foredeck, flybridge, bridge deck and aft deck
- Marquipt davit with 3000 lb. capacity @ 10' w/270-degree power rotation
- Marquipt fully hydraulic, rotating passerelle
- 2x Maxwell VWC 8000 vertical hydraulic anchor windlasses with 5/8" chain gypsy and rope capstan, deck pipe & chain stopper
- 2x 400 lb. Poole type anchors stowed in pockets
- Deck drains with strainers on main and flybridge decks discharging at waterline 1.25" stainless steel rails
- 2x Maxwell VC 3500 warping capstans on the aft deck
- Stainless steel bollards
- Stainless steel fairleads

---

## Engine Room

---

- Twin Caterpillar 3512B diesel engines, 2250 hp each, fresh water-cooled, “deep sump”
- Engine hours: 8900hrs (June 2020)
- Atlas remote switchboard control (provided in pilothouse) also controls 75 hp electric bow thruster system w/4 control stations
- 2x Northern Lights 65 kW generators, 1800 rpm with hydrostatic mounts, 24 volt DC starting and sound shields.
- Generator hours: 100hrs SMOH (June 2020)
- Hamann waste treatment system, or to the vented deck fitting for shore-side disposal; combined black & grey 630 USG
- Headhunter toilets throughout
- Lube oil change system with 110V AC pump, manifold, and hoses to all engines & gearboxes - clean and dirty 150 USG each
- Engineered engine room ventilating system, with Heinen & Hopman intake blowers (temperature & pressure regulated) drawing air in via air/water separators
- 4x Water heaters, 40 gallons each
- Domestic hot water circulating system
- Ultraviolet water sterilizing system
- Sink with freshwater hose bib
- HART Tank Tender (fuel/freshwater)
- Kobelt electronic control station in engine room
- Atlas 60 kva seamless transfer auto parallel
- Alfa Laval MAB103 230 GPH
- Naiad -20" 75 hp proportional A/C electric bow thruster runoff
- Atlas system
- 30 tons Aquair chilled water air conditioning with fresh air make up (completely serviced)
- 2x 1600 GPD Filtration Concepts INC watermakers
- 2x 100 amp shore power cords - 3 phase
- Centek generator mufflers, air/water separator type with side hull discharge
- Wagner hydraulic steering system w/backup electric pump/motor
- ITT Jabsco engine driven emergency bilge pump
- 3x Racor filters for main engines
- Racor filter for generators
- Cartridge style water filter unit for freshwater system
- Fuel management system, consisting of fuel shut-off valves, fuel transfer manifold and two fuel transfer pumps connected to a fuel meter and hand pump
- Emergency escape to and from guest accommodations
- Naiad hydraulic pumps on both main engines
- Naiad 410 roll stabilizer multi-sea control w/19 sq. ft. fins
- Air-conditioned engine room
- Watertight entrance door from aft crew area and emergency ladder to aft deck
- Ansul fire protection system
- Bilge/fire pump system
- Naiad electric hydraulic pump

---

## Electrical Equipment

---

- Atlas TecPower main AC switchboard w/paralleling for 2 x 65 kW generators, seamless transfer & power management
- Atlas main DC switchboard contains metering for all engine room batteries, DC disconnect switch, main DC distribution circuit breakers & engine room DC distribution circuit breakers
- Atlas 60 kva ShorePower classic frequency converter & Smart Box 100 dual cord accessory allows the connection of vessel's shore cords to any AC power source in the world
- ShorePower will automatically convert single or 3-phase, any voltage & 50 or 60 hz source to 120/208V AC 3-phase 60 hz power for the vessel main bus
- Atlas remote switchboard control is provided in the pilothouse
- AC/DC electrical panels in control room, in engine room & zone panels throughout vessel
- 3 Stage reverse cycle heating system with 2 kW defrost element in pilothouse
- 110 volt AC/24V AC halogen overhead light fixtures
- 24V DC emergency lights start automatically at loss of AC power (inc. floor & stair lights)
- 2x Glendenning Cablemaster shore power cable retrieval systems for 3-phase, 230VAC, 100 amp service with 100' cables
- Fiberglass battery boxes
- Battery condition indicator
- ACR RCL 600 searchlight with 2 station remote control (flybridge & pilothouse)
- Fully ABS classed switchboard includes automatic load shedding, automatic generator start & control & shore cord selector switches
- ABS classed switchboard also contains emergency lighting controls & circuit breakers
- Wardrobe lights, automatic
- 110VAC receptacles in engine room, galley, heads & exterior are protected with GFI safety breakers
- Isolation transformer (60 KVA), for shore power system (See Atlas)
- 2x Shore telephone & cable TV inlets in swim step locker and foredeck, each w/125' cord
- 2x Headhunter Mach 5 220V AC water pumps with accumulator tank for freshwater system
- Emergency engine start battery parallel system
- 24V DC 210 amp-hour gel battery bank, with 60 amp battery charger and 80 power supply for electronic use
- 2x Banks of 24VDC 210 amp-hour gel batteries for engine starting & ship service
- 24V DC 80 amp battery charger
- 2x Sets of 12V DC 175 amp-hour gel batteries for generator starting
- 6 Spare 24V DC and 6 spare 12VDC circuit breakers
- 80 amp battery 24V charger

---

## Construction

---

- Hull, deck, interior decks, structural bulkheads, and superstructure of core cell cored fiberglass



- Multi-axial E-glass reinforcement
- Integral fiberglass fuel, fresh water and holding tanks
- Vinylester outer laminate and International epoxy barrier system applied to hull under body

---

## Safety and Fire Protection

---

- Ansul engineered fire protection system
- ITT Jabsco engine driven emergency bilge pump
- Emergency escape to and from guest accommodations
- Bilge/fire pump system
- Watertight entrance door from aft crew area, emergency ladder to aft deck
- ABS switchboard also contains emergency lighting controls and circuit breakers
- Emergency engine start battery parallel system

---

## Exclusions

---

Owner's personal effects. A full inventory of exclusions to be provided at time of fully executed Purchase Agreement.

---

## Broker Comments

---

NICOLE EVELYN has enjoyed three owners, who have all demanded that the yacht be kept in top condition. Built with an eye to longevity and versatility, the equipment list is impressive. As an example, deep sump 3512 Caterpillar engines, allow up to 1,000hrs between oil changes. Full Atlas shorepower, Alfa Laval fuel separator and the large Marquipt stern passerelle encourage international exploration.

With her large main and upper deck windows combined with high ceiling heights, in combination with hand-rubbed Makore and Anigre millwork, colorful stonework and details, such as the soda-blue granite in the galley and lower guest foyer, the interior is light, bright and fun. Thoughtful details are found throughout the vessel, such as the washer/dryer combination in the master suite or the convenience bar with fridge in the lower guest lobby, which allows both guests and crew some autonomy.

Her annual yard period was completed in June 2020. If you are looking for a well-equipped and maintained yacht, that is ready to go cruising, then NICOLE EVELYN represents one of the best values in her class!

---

## Исключения

---

При продаже яхты исключаются личные вещи владельца.

---

## Отказ от ответственности

---

Компания предоставляет описание судна или яхты добросовестно, но не может гарантировать точность этой информации, а также не ручается за техническое состояние. Покупатель должен проинструктировать своих агентов или оценщиков исследовать представленную информацию более подробно, по собственному желанию. Продажа судна или яхты, изменение цены или снятие с продажи будет происходить без предварительного уведомления.

# ФОТОГРАФИИ

**Main Salon**



**Main Salon**



**Dining Area**



**Dining Area**



**Dining Area**



**Dining Area**



**Master Study**



**Master Stateroom Entrance**



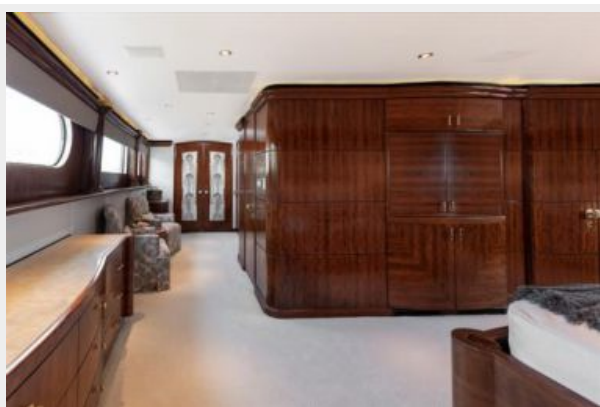
**Master Stateroom**



**Master Stateroom**



**Master Stateroom**



**Master Bath (His)**



**Master Bath (Hers)**



**Lower Deck Foyer**



**Lower Deck Foyer**



**Port Aft Guest Stateroom**



**Port Aft Guest Bath**



**Starboard Aft Guest Stateroom**



### Starboard Aft Guest Bath



### Starboard Guest Stateroom



### Starboard Guest Bath



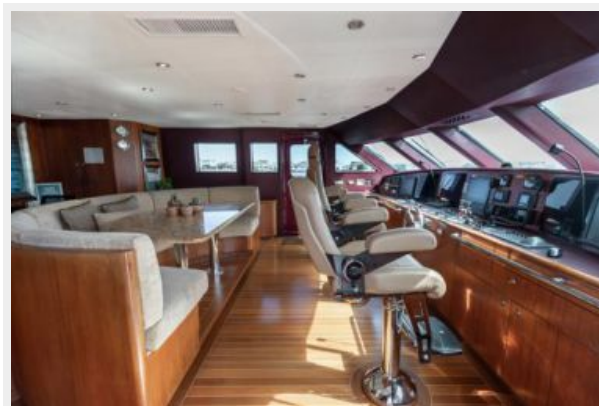
### Twin Guest Stateroom



**Pilothouse**



**Pilothouse / Helm**



**Skylounge**



**Skylounge**



**Skylounge**



**Skylounge**



**Skylounge**



**Skylounge Dayhead**



**Bridge Deck Aft**



**Bridge Deck**



**Jacuzzi**



**Jacuzzi**





**Jacuzzi**



**Stairway to Upper Deck**



**Flybridge**



**Flybridge Sunlounge**



**Sunlounge / Upper Helm**



**Side Deck**



**Foredeck Sunlounge**



**Foredeck Sunlounge**



**Foredeck**



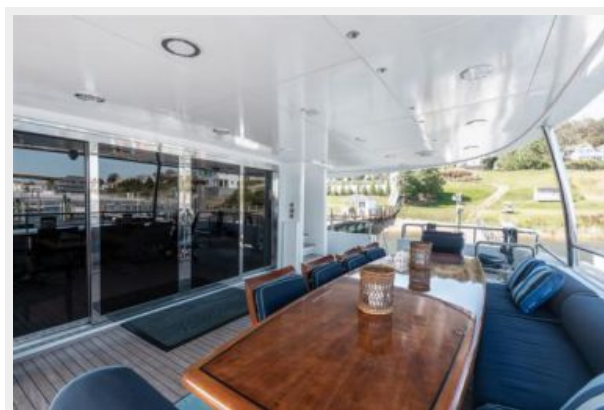
**Foredeck**



**Aft Deck**



**Aft Deck**



**Aft Deck**



**Galley**



**Galley**



**Galley**



**Crew Quarters**



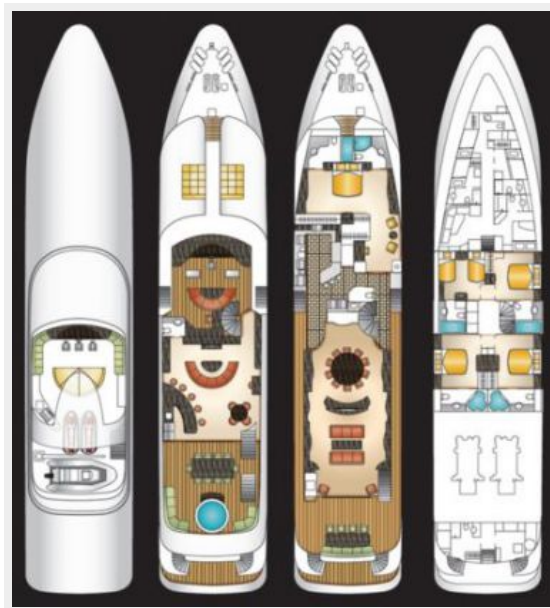
**Crew Cabin**



## Crew Cabin



## Layout



# КОНТАКТЫ

---

Андрей Шестаков (Andrey Shestakov) – ведущий яхтенный брокер отдела продаж яхт и судов компании Shestakov Yacht Sales Inc. Официальный представитель Shestakov Yacht Sales Inc. для русскоговорящих клиентов в центральном офисе компании в Майами/Форт Лодердейл/Флорида/США.

## Контактная информация

---

Email: [andrey@shestakovyachtsales.com](mailto:andrey@shestakovyachtsales.com)

Web: [shestakovyachtsales.com](http://shestakovyachtsales.com)

## Телефоны

---

Краснодарский край: **+7(918)465-66-44**

США, Майами, Флорида: **+1(954)274-4435**

## Время работы

---

Понедельник – Суббота: **9:00 - 21:00**  
EDT

Воскресенье: **Закрето**

## Адрес

---



Harbour Towne Marina, 850 NE 3rd St,  
STE 213, Dania, FL 33004