

## CURRENT AFFAIR — SEA RAY



**Builder:** SEA RAY

**Year Built:** 2005

**Model:** Motor Yacht

**Price:** PRICE ON APPLICATION

**Location:** United States

**LOA:** 50' 0" (15.24m)

**Beam:** 15' 3" (4.65m)

**Max Draft:** 4' 3" (1.30m)

Our experienced yacht broker, Andrey Shestakov, will help you choose and buy a yacht that best suits your needs **CURRENT AFFAIR — SEA RAY** from our catalogue. Presently, at Shestakov Yacht Sales Inc., we have a wide variety of yachts available on our sale's list. We also work in close contact with all the big yacht manufacturers from all over the world.

If you would like to buy a yacht **CURRENT AFFAIR — SEA RAY** or would like help answering any questions concerning purchasing, selling or chartering a yacht, please call **+1(954)274-4435**

# TABLE OF CONTENTS

TABLE OF CONTENTS	2
SPECIFICATIONS	4
Overview	4
Basic Information	4
Dimensions	4
Speed, Capacities and Weight	4
Accommodations	4
Hull and Deck Information	5
Engine Information	5
DETAILED INFORMATION	6
Boat Highlights	6
Exclusions	7
Disclaimer	7
PHOTOS	8
Flybridge	8
Salon	8
Dinette	8
Galley	8
Master stateroom	8
VIP stateroom	8
Steps to the flybridge	9
Entry to the salon (with sliding door open)	9
Side deck	9
Bow profile	9
Flybridge view 2	10
Helm station looking aft	10
Captain's chair	10
Salon looking forward	10

---

Stbd salon	10
Port salon	10
Sink in the galley	11
Dinette view 2	11
Panasonic microwave	11
Kenyon stove top	11
Distribution panel	12
Steps to the staterooms	12
Master stateroom view 2	12
Master head	12
Master vanity sink	13
Master head with shower	13
Guest vanity and shower	13
TV in the VIP stateroom	13
Guest shower	14
Guest stateroom	14
Engine room	14
Engine room 2	14
Engine room 3	14
Engine room 4	14
Engine room 5	15
Onan genset	15
Sink at the bridge	15
CONTACTS	16
Contact details	16
Telephones	16
Office hours	16
Address	16

---

---

# SPECIFICATIONS

---

## Overview

---

We are delighted to offer this all freshwater 500 Sedan Bridge to the market!

## Basic Information

---

**Category:** Motor Yacht

**Sub Category:** Flybridge

**Model Year:** 2005

**Year Built:** 2005

**Country:** United States

**Vessel Top:** Enclosed Pilothouse

**Fly Bridge:** Yes

**Cockpit:** Yes

## Dimensions

---

**LOA:** 50' 0" (15.24m)

**Beam:** 15' 3" (4.65m)

**Max Draft:** 4' 3" (1.30m)

**MFG Length:** 52' 3" (15.93m)

## Speed, Capacities and Weight

---

**Displacement:** 42000 Pounds

**Water Capacity:** 140 Gallons

**Holding Tank:** 68 Gallons

**Fuel Capacity:** 500 Gallons

## Accommodations

---

**Total Cabins:** 3

**Total Berths:** 5

**Sleeps:** 8

**Total Heads:** 2

---

## Hull and Deck Information

---

**Hull Material:** Fiberglass

**Hull Configuration:** Modified V-Hull

**Hull Color:** Dark blue

---

## Engine Information

---

**Engines:** 2

**Manufacturer:** Cummins

**Model:** QSM-11

**Engine Type:** Inboard

**Fuel Type:** Diesel

---

# DETAILED INFORMATION

---

---

## Boat Highlights

---

**Note: All photos are from a previous listing or are sistership photos. New photos are coming soon!**

We are delighted to offer this all freshwater 500 Sedan Bridge to the market!

The dark blue hull shines, her enclosure is in great shape, and owner reports that all maintenance is up to date! This vessel has had excellent care throughout her life and it shows in her condition.

She offers the most desirable options including but not limited to hydraulic lift, cherry interior, bridge A/C, and upgraded electronics. She is powered by twin 660 HP Cummins QSM-11 engines, equipped with bow and stern thrusters for easy docking. The visibility from the helm is truly something to be experienced.

**CURRENT AFFAIR** features include (but are not limited to):

- New bottom paint done in April 2020
- All new (4) Group D Batteries installed in November 2019 \*UPGRADE
- New Fusion Stereo installed in August 2019 \*UPGRADE
- New Cummins air filters installed in April 2019
- All new (4) cabin Carbon Monoxide detectors installed in March 2019
- Boat has been buffed and waxed twice a year and washed weekly 8 months of the year
- Spare set of propellers
- Bow and stern thrusters
- Bridge A/C
- Integral swim platform and extension with hydraulic platform lift
- Custom Sun pad
- (2) underwater lights
- Twin QSM-11 Cummins (660hp each)
- Onan 13.5kW genset
- Sat TV receiver system
- Raymarine Radar with C-120 multi-function display with an open array
- Raymarine autopilot with wireless remote control
- Garmin 7612 (GPS/chart-plotter/depth sounder with video monitor capabilities)
- Raymarine Ray VHF radio with remote mounted speaker
- Sea Ray Systems monitor
- Cummins Smart Craft
- Magma stainless steel L.P.G. barbeque grill
- Kenyon two (2) burner stove top
- Krups coffee-maker

- Bose Surround Sound stereo system
- Beam central vacuum system
- Reverso five (5) bank oil changer system
- 40-lb galvanized plow type anchor
- Lofrans Progress 2 windlass with foot switches mounted at bow and remote control at the helm
- Blue canvas helm cover
- Flybridge carpet
- Flybridge enclosure

...and many more!!!

## Exclusions

---

Owner's personal belongings.

## Disclaimer

---

The Company offers the details of this vessel or yacht in good faith but cannot guarantee or warrant the accuracy of this information nor warrant the condition of the vessel. A buyer should instruct his representatives, agents, or his surveyors, to investigate such details as the buyer desires validated. This vessel or yacht is offered subject to prior sale, price change, or withdrawal without notice.

# PHOTOS

**Flybridge**



**Salon**



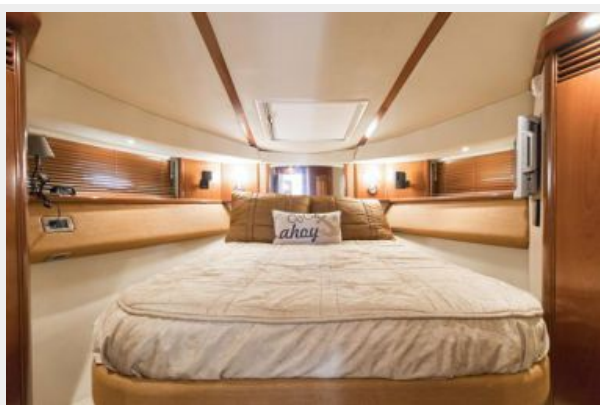
**Dinette**



**Galley**



**Master stateroom**



**VIP stateroom**





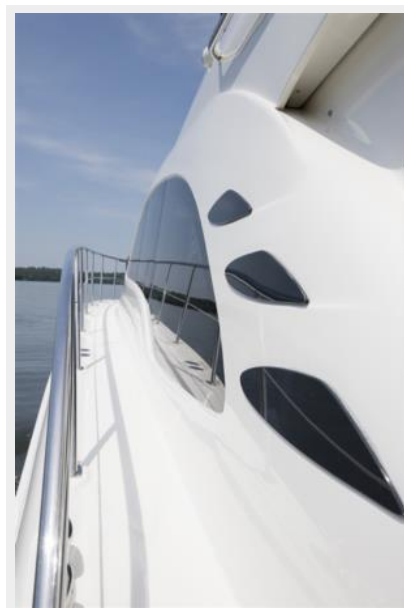
### Steps to the flybridge



### Entry to the salon (with sliding door open)



### Side deck



### Bow profile



**Flybridge view 2**



**Helm station looking aft**



**Captain's chair**



**Salon looking forward**



**Stbd salon**



**Port salon**



**Dinette view 2**



**Sink in the galley**



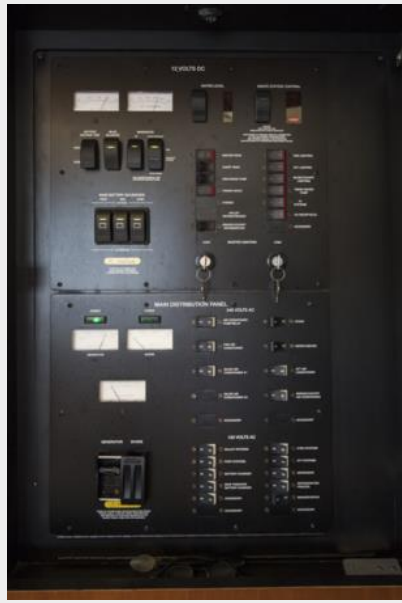
**Panasonic microwave**



**Kenyon stove top**



**Distribution panel**



**Steps to the staterooms**



**Master stateroom view 2**



**Master head**



**Master head with shower**



**Master vanity sink**



**Guest vanity and shower**



**TV in the VIP stateroom**



**Guest shower**



**Guest stateroom**



**Engine room**



**Engine room 2**



**Engine room 3**



**Engine room 4**



**Engine room 5**



**Onan genset**



**Sink at the bridge**



---

# CONTACTS

---

Andrey Shestakov, leading yacht broker of the sales department of Shestakov Yacht Sales Inc. Shestakov Yacht Sales Inc., the official representative of the Miami/Fort Lauderdale FL headquarters.

---

## Contact details

---

Email: [andrey@shestakovyachtsales.com](mailto:andrey@shestakovyachtsales.com)

Web: [shestakovyachtsales.com/en/](http://shestakovyachtsales.com/en/)

---

## Telephones

---

USA: +1(954)274-4435

---

## Office hours

---

Monday – Saturday: **9:00 - 21:00** EDT

Sunday: **closed**

---

## Address

---



Harbour Towne Marina, 850 NE 3rd St,  
STE 213, Dania, FL 33004