

Y42 — CANADOS



Builder: CANADOS

Year Built: 2008

Model: Motor Yacht

Price: PRICE ON APPLICATION

Location: France

LOA: 111' 7" (34.00m)

Beam: 24' 0" (7.32m)

Min Draft: 0' 0" (0.00m)

Max Draft: 8' 0" (2.44m)

Cruise Speed: 23 Kts. (26 MPH)

Max Speed: 30 Kts. (35 MPH)

Our experienced yacht broker, Andrey Shestakov, will help you choose and buy a yacht that best suits your needs Y42 — CANADOS from our catalogue. Presently, at Shestakov Yacht Sales Inc., we have a wide variety of yachts available on our sale's list. We also work in close contact with all the big yacht manufacturers from all over the world.

If you would like to buy a yacht Y42 — CANADOS or would like help answering any questions concerning purchasing, selling or chartering a yacht, please call +1(954)274-4435

TABLE OF CONTENTS

| | |
|--|----|
| TABLE OF CONTENTS | 2 |
| SPECIFICATIONS | 4 |
| Overview | 4 |
| Basic Information | 4 |
| Dimensions | 4 |
| Speed, Capacities and Weight | 4 |
| Accommodations | 5 |
| Hull and Deck Information | 5 |
| Engine Information | 5 |
| DETAILED INFORMATION | 6 |
| Machinery | 6 |
| Other Machinery | 7 |
| Communications and Navigation | 7 |
| ENTERTAINMENT SYSTEM | 7 |
| GALLEY & LAUNDRY EQUIPMENT | 7 |
| TENDERS & TOYS | 8 |
| Deck Equipment | 8 |
| SECURITY, FIRE FIGHTING & SAFETY EQUIPMENT | 8 |
| Exclusions | 9 |
| Disclaimer | 9 |
| PHOTOS | 10 |
| Y42-2 | 10 |
| Y42-3 | 10 |
| Y42-4 | 10 |
| Y42-5 | 10 |
| Y42-7 | 10 |
| Y42-6 | 10 |
| Y42-9 | 11 |

| | |
|-----------------|----|
| Y42-8 | 11 |
| Y42-10 | 11 |
| Y42-11 | 11 |
| Y42-12 | 12 |
| Y42-13 | 12 |
| Y42-14 | 12 |
| Y42-15 | 12 |
| Y42-16 | 12 |
| Y42-17 | 12 |
| Y42-19 | 13 |
| Y42-18 | 13 |
| Y42-20 | 13 |
| Y42-21 | 13 |
| Y42-22 | 14 |
| CONTACTS | 15 |
| Contact details | 15 |
| Telephones | 15 |
| Office hours | 15 |
| Address | 15 |

SPECIFICATIONS

Overview

In turn-key condition after careful ownership and regular upgrades and refit work in 2019 this must be the best Y42 Canados on the market, and the most sensibly priced. She is fully commercially compliant so can be offered for charter by a new owner with ease. Please call for more information.

Basic Information

Category: Motor Yacht

Model Year: 2008

Year Built: 2008

Refit Year: 2019

Refit Type: Paint, New solid hard top, interior soft furnishings
Country: France

Dimensions

LOA: 111' 7" (34.00m)

Beam: 24' 0" (7.32m)

Min Draft: 0' 0" (0.00m)

Max Draft: 8' 0" (2.44m)

Speed, Capacities and Weight

Cruise Speed: 23 Kts. (26 MPH)

Cruise Speed Range: 521

Max Speed: 30 Kts. (35 MPH)

Max Speed Range: 510 Kts.

Gross Tonnage: 192 Pounds

Water Capacity: 634.0129248 Gallons

Fuel Capacity: 4490.924884 Gallons

Fuel Consumption: 198.129039 Gallons

Accommodations

Total Cabins: 5

Total Berths: 10

Sleeps: 10

Crew Cabin: 3

Crew Berths: 6

Crew Sleeps: 6

Hull and Deck Information

Hull Material: GRP

Deck Material: Teak

Hull Designer: Canados

Exterior Designer: Canados

Interior Designer: Canados

Engine Information

Engines: 2

Manufacturer: MTU

Model: m91 16 v

Engine Type: Inboard

Fuel Type: Diesel

DETAILED INFORMATION

Machinery

MACHINERY I

Main Engines

Engine Make/Model: SERIE m91 16 v. 2450 cv per engine
 Engine Hours: 2500H
 Gearboxes for Main Engines: ZF
 Drive: V drive

Speed Consumption per hours Range RPM

| | Speed Consump/hr | Range | RPM |
|-----------|------------------|-------|------|
| Maximum: | 30 1000L/H | 510 | 2450 |
| Cruising: | 23 750L/H | 521 | 2150 |

Generators & Electricity

Output: 50KW
 Generators: Onan (generatrice) john deer (engine)
 Generator Hours: 5000H
 Generator Fuel Consumption: Full charge 10l/h
 Shore Power: 380V 63amps 50hzt

Batteries

Main Engine Starting: 24V X 4
 Generator Starting: 4 baterries 24v
 Emergency: 9 batteries 24v

Air Conditioning:

Type: 4 compressor. 380V Brand: condaria

Other Machinery

Water makers: opacmare
Bow Thruster: VETUS
Steering System: Gianceschi 380V
Sewage System: Hamman sytem
Fresh Water System: Gianceschi X 2

Communications and Navigation

Communication Systems

SSB: Furuno fs 2570C
VHF: Furuno HS 2003

Navigation Systems

Radars: furuno xband
Magnetic Compass: yes
Auto Pilot: Furuno navpilot
Depth Sounder: Furuno new 2020
GPS: furuno navigator 150
Plotter: navnet furuno
Wind/Speed Log Furuno

ENTERTAINMENT SYSTEM

Each cabin is equipped with a Samsung TV and Apple TV

GALLEY & LAUNDRY EQUIPMENT

Main Galley Equipment

Cooking Equipment: Induction plate/ 1 oven (smeg) steam oven. (miele)
Refrigeration/Freezer: 1 freezer 3 fridge
Dishwasher: 1 miele

Crew Galley/Mess Equipment

Cooking Equipment: Micro onde miele

Refrigeration/Freezer: 1 wine fridge miele 1 normal fridge

Other: Hot tea maker

Additional Galley Equipment

Cooking Equipment: Microwave miele

Refrigeration/Freezer:

Other:

Laundry Equipment:

Main Laundry Equipment Washing machine 1 Dryer 1

TENDERS & TOYS

Tenders: 1 williams sport jet 5,25M brand new 2018 model

Exercise Equipment: 1 e-foil, 2 sea bob SR brand new

Deck Equipment

Anchor Windlass: 2 news windlass installed in MARCH 2020 Brand itlawinch

Aft Warping Capstans: 2 italwinch

Anchors:

Anchor Chain:

Boat Crane and Davits: 1 platform for the tender

Passerelle: 1

Swimming Platform: 1

SECURITY, FIRE FIGHTING & SAFETY EQUIPMENT

Security Equipment:

CCTV System:

Cameras: 2 cameras engine and aft deck

Monitors:

Fire Fighting Equipment:

Fire Control System: Fm200 AND CO2

Fire Extinguishers: Yes 21

Alarms: Yes 1 central alarm

Safety Equipment

Life Rafts: 4 life rafts of 10pax

Life Rings: 5

EPIRBS: 1

Flares: YES

Medical Equipment: Yes ocean dotation

Exclusions

Owner's personal belongings.

Disclaimer

The Company offers the details of this vessel or yacht in good faith but cannot guarantee or warrant the accuracy of this information nor warrant the condition of the vessel. A buyer should instruct his representatives, agents, or his surveyors, to investigate such details as the buyer desires validated. This vessel or yacht is offered subject to prior sale, price change, or withdrawal without notice.

PHOTOS

Y42-2



Y42-3



Y42-4



Y42-5



Y42-6



Y42-7



Y42-8



Y42-9



Y42-10



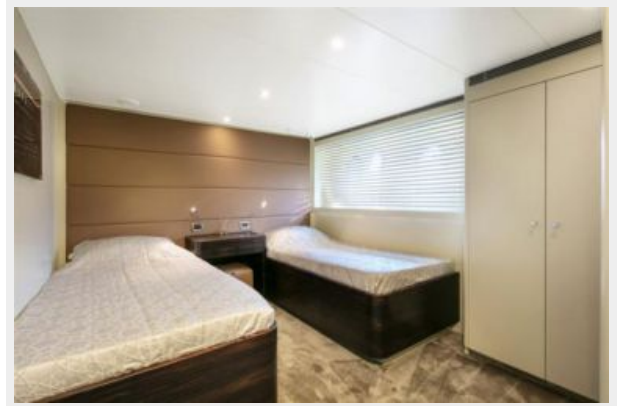
Y42-11



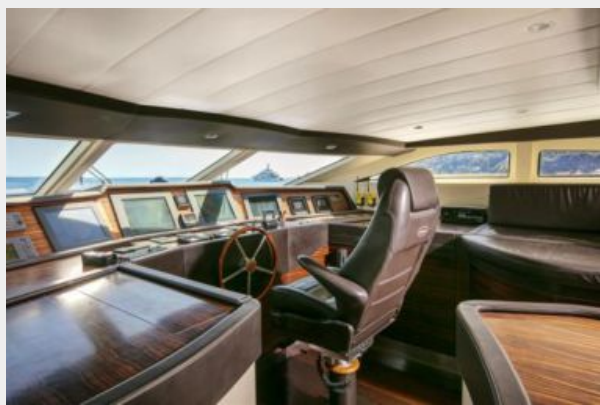
Y42-12



Y42-13



Y42-14



Y42-15



Y42-16



Y42-17



Y42-18



Y42-19



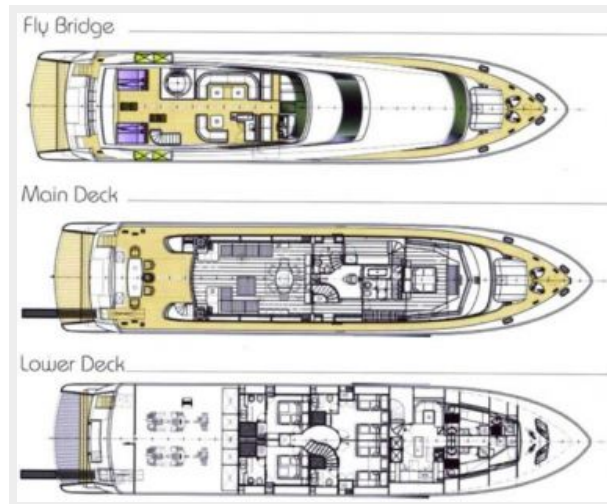
Y42-20



Y42-21



Y42-22



CONTACTS

Andrey Shestakov, leading yacht broker of the sales department of Shestakov Yacht Sales Inc. Shestakov Yacht Sales Inc., the official representative of the Miami/Fort Lauderdale FL headquarters.

Contact details

Email: andrey@shestakovyachtsales.com

Web: shestakovyachtsales.com/en/

Telephones

USA: +1(954)274-4435

Office hours

Monday – Saturday: **9:00 - 21:00** EDT

Sunday: **closed**

Address



Harbour Towne Marina, 850 NE 3rd St,
STE 213, Dania, FL 33004