

MIKADO — HITACHI ZOSEN



Builder: [Hitachi Zosen](#)

Year Built: 1987

Model: Motorsailor

Price: PRICE ON APPLICATION

Location: Spain

LOA: 154' 0" (46.93m)

Beam: 30' 0" (9.15m)

Max Draft: 10' 3" (3.10m)

Cruise Speed: 10 Kts. (12 MPH)

Max Speed: 13 Kts. (15 MPH)

Our experienced yacht broker, Andrey Shestakov, will help you choose and buy a yacht that best suits your needs **MIKADO — Hitachi Zosen** from our catalogue. Presently, at Shestakov Yacht Sales Inc., we have a wide variety of yachts available on our sale's list. We also work in close contact with all the big yacht manufacturers from all over the world.

If you would like to buy a yacht **MIKADO — Hitachi Zosen** or would like help answering any questions concerning purchasing, selling or chartering a yacht, please call **+1(954)274-4435**

TABLE OF CONTENTS

TABLE OF CONTENTS	2
SPECIFICATIONS	4
Overview	4
Basic Information	4
Dimensions	5
Speed, Capacities and Weight	5
Accommodations	5
Hull and Deck Information	5
Engine Information	5
PHOTOS	6
MIKADO_00006166_vb1677888	6
3	6
4	6
MIKADO_00006166_vb1677830	6
5	6
6	6
7	7
MIKADO_00006166_vb1677827	7
9	7
10	7
11	7
12	7
13	8
14	8
15	8
16	8
17	8
18	8

19	9
MIKADO_00006166_vb1677828	9
MIKADO_00006166_vb1677834	9
MIKADO_00006166_vb1677838	9
MIKADO_00006166_vb1677840	9
MIKADO_00006166_vb1677844	9
MIKADO_00006166_vb1677858	10
MIKADO_00006166_vb1677861	10
MIKADO_00006166_vb1677851	10
MIKADO_00006166_vb1677854	10
MIKADO_00006166_vb1677849	10
MIKADO_00006166_vb1677880	10
MIKADO_00006166_vb1677890	11
MIKADO_00006166_vb1677892	11
MIKADO_00006166_vb1677904	11
MIKADO_00006166_vb1677878	11
CONTACTS	12
Contact details	12
Telephones	12
Office hours	12
Address	12

SPECIFICATIONS

Overview

The 46.9m (154ft) MIKADO is a ketch rigged motor sailing yacht delivered in 1987 by the Hitachi Zosen Corp Shipyard in Japan to exterior designs by William Garden of Canada and interiors redesigned in 1998 by Naomi Leff & Associates of New York. Always professionally maintained with shipyard periods every 18-24 months, she received a Lloyd's class refit in winter 2006-07. Generous outside guest spaces include a flybridge sun deck with a daybed forward to port and a lounge area to starboard. Raised sun loungers run aft between tender stowage spaces and there is a sun lounge on a teak grate extending over the aft deck. Steps lead down to the main deck aft. On the main deck there is an intimate observation lounge on the foredeck and sidedeck gates lead to the main deck aft guest area. There is a lounge diner area with open air dining for eight guests. Aft is a lounge area shaded by an awning and aft is deck space for sun loungers or sunpads. Inside a spacious and relaxed lounge area is well illuminated by large picture windows which open up to allow breeze. Steps in the wheelhouse forward lead down to a lower deck TV room to port and a library lounge area to starboard. MIKADO welcomes nine guests in four lower deck cabins. The full beam owner's suite aft has seating either side, a dressing room with an additional day bed and his and hers en suite bathrooms. Two further double cabins and one twin cabin, all en suite, complete family friendly guest accommodation and MIKADO also sleeps up to eight crew. Both masts, with in-mast furling, and booms are in aluminium by Rondal, who also supplied her furling equipment, and she completed her eight-year rig survey in 2018. All sails are by North Sails and were serviced in 2017 with staysail and genoa serviced again in 2020 and the majority of her Lewmar winches are hydraulic. Twin 600hp Caterpillar diesel engines drive two four bladed, variable pitch bronze propellers to give her a top speed of 13 knots, a cruising speed of 11 knots and a range of 3,400nm at 10 knots. She is also equipped with one set of Vosper stabilisers. We are delighted to bring this stylish and proven yacht to market with an asking price of USD 3,250,000.

Basic Information

Category: Motorsailor

Sub Category: Cruising Ketch

Model Year: 1987

Year Built: 1987

Country: Spain

Cockpit: Yes

Dimensions

LOA: 154' 0" (46.93m)

Beam: 30' 0" (9.15m)

Max Draft: 10' 3" (3.10m)

Speed, Capacities and Weight

Cruise Speed: 10 Kts. (12 MPH)

Cruise Speed Range: 3400

Max Speed: 13 Kts. (15 MPH)

Displacement: 837756.5956 Pounds

Gross Tonnage: 323 Pounds

Water Capacity: 15000 Gallons

Fuel Capacity: 40000 Gallons

Accommodations

Total Cabins: 5

Total Berths: 9

Sleeps: 9

Total Heads: 5

Captain Cabin: True

Crew Berths: 8

Crew Sleeps: 8

Hull and Deck Information

Hull Material: Aluminum

Deck Material: Teak

Hull Color: White

Exterior Designer: William Garden

Interior Designer: Naomi Leff & Associates

Engine Information

Engines: 2

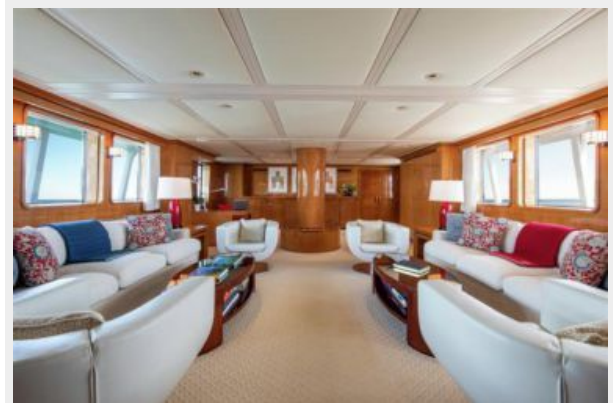
Manufacturer: Caterpillar

PHOTOS

MIKADO_00006166_vb1677888



3



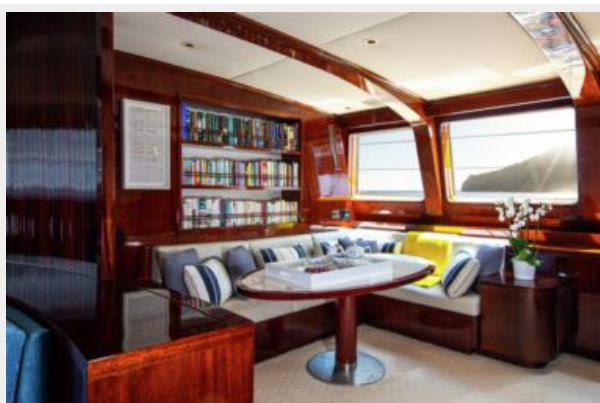
4



MIKADO_00006166_vb1677830



5



6



7



MIKADO_00006166_vb1677827



9



10



11



12



13



14



15



16



17



18



19



MIKADO_00006166_vb1677828



MIKADO_00006166_vb1677834



MIKADO_00006166_vb1677838



MIKADO_00006166_vb1677840



MIKADO_00006166_vb1677844



MIKADO_00006166_vb1677858



MIKADO_00006166_vb1677861



MIKADO_00006166_vb1677851



MIKADO_00006166_vb1677854



MIKADO_00006166_vb1677849



MIKADO_00006166_vb1677880



MIKADO_00006166_vb1677890



MIKADO_00006166_vb1677892



MIKADO_00006166_vb1677904



MIKADO_00006166_vb1677878



CONTACTS

Andrey Shestakov, leading yacht broker of the sales department of Shestakov Yacht Sales Inc. Shestakov Yacht Sales Inc., the official representative of the Miami/Fort Lauderdale FL headquarters.

Contact details

Email: andrey@shestakovyachtsales.com

Web: shestakovyachtsales.com/en/

Telephones

USA: +1(954)274-4435

Office hours

Monday – Saturday: **9:00 - 21:00** EDT

Sunday: **closed**

Address



Harbour Towne Marina, 850 NE 3rd St,
STE 213, Dania, FL 33004