

## MIMOSA — LEOPARD



**Судостроитель:** LEOPARD

**Длина общая:** 45' 0" (13.72m)

**Год постройки:** 2019

**Ширина:** 24' 2" (7.37m)

**Модель:** Катамаран

**Цена:** ЦЕНА ЯХТЫ ПО ЗАПРОСУ

**Местонахождение:** United States

Купить **MIMOSA — LEOPARD** а также выбрать подходящую вам яхту из нашего каталога яхт вам поможет опытный яхтенный брокер Андрей Шестаков. На сегодняшний день компания **Shestakov Yacht Sales Inc.** имеет большое количество яхт в собственном списке продаж, а также тесно сотрудничает со всеми крупными яхтенными производителями по всему миру.

Для того чтобы купить яхту **MIMOSA — LEOPARD** а также проконсультироваться по любому вопросу связанному с покупкой, продажей, чартером яхт позвоните по телефону **+7(918)465-66-44**.

# ОГЛАВЛЕНИЕ

ОГЛАВЛЕНИЕ	2
ХАРАКТЕРИСТИКИ	8
Обзор	8
Основная информация	9
Размеры	9
Скорость, вместимость и масса	9
Размещение	10
Корпус и палуба	10
Информация о двигателе	10
ПОДРОБНОЕ ОПИСАНИЕ	11
Manufacturer Provided Description	11
Innovation	11
Comfort	11
Interior	12
Craftsmanship	12
Disclaimer	12
Исключения	13
Отказ от ответственности	13
ФОТОГРАФИИ	14
2	14
3	14
5	14
4	14
6	14
7	14
8	15
9	15
10	15

11	15
12	15
13	15
14	16
15	16
16	16
17	16
18	16
19	16
21	17
20	17
23	17
22	17
24	18
25	18
26	18
27	18
28	18
29	18
30	19
31	19
33	19
32	19
34	20
35	20
36	20
37	20
38	21
39	21

40	21
41	21
42	21
43	21
44	22
45	22
46	22
47	22
48	22
49	22
50	23
51	23
52	23
53	23
55	23
54	23
56	24
57	24
58	24
59	24
61	24
60	24
62	25
63	25
65	25
64	25
66	25
67	25
68	26

---

69	26
70	26
71	26
72	26
73	26
74	27
75	27
76	27
77	27
78	27
79	27
80	28
81	28
82	28
83	28
85	28
84	28
86	29
87	29
88	29
89	29
90	29
91	29
92	30
93	30
94	30
95	30
96	30
97	30

---

98	31
99	31
100	31
101	31
102	31
103	31
104	32
105	32
106	32
107	32
108	32
109	32
110	33
111	33
112	33
113	33
115	34
114	34
117	34
116	34
118	35
119	35
120	35
121	35
122	35
123	35
124	36
125	36
126	36

---

127	36
129	37
128	37
130	37
131	37
132	38
<b>КОНТАКТЫ</b>	<b>39</b>
Контактная информация	39
Телефоны	39
Время работы	39
Адрес	39

# ХАРАКТЕРИСТИКИ

## Обзор

### New Listing! 2019 Leopard 45 Owners Version "Mimosa"

**Mimosa is a better than new 2019 Leopard 45 with every single factory option added and too many aftermarket additions to list. Contact your broker today for a showing, you will not be disappointed, Mimosa is near perfect condition!**

Raymarine Electronics including Quantum II Radar, AIS700, Autopilot Remote, Axiom 12" at helm and 9" at nav station, Forward and Rear Cameras display at chartplotter, Glomex TV over air antenna, Fusion Marine Stereo, Digital Yacht 4GConnect Wifi Extender and Router

9KW Northern Lights Generator

2x 16K BTU Cruisair Air Conditioners, Reverse Cycle Heat

Spectra Newport 400 Watermaker 12v (16.6 gph)

Dive Compressor with custom mount

Splendide Washer / Dryer with exhaust

Bowsprit with Code D on Furler with UV Cover

Rocna 55 Upgraded Anchor with 1165' chain and 150' rhode

Windlass Up Switch at Anchor

Aft Cockpit Refrigerator

12 volt Dometic Refrigerator/Freezer installed in Bilge/Storage area

Custom Aft and Forward Cockpit Cushions in Sunbrella with backrests

Custom Aft Sliding Door shades, light diffusing

Aqua Luma Blue Underwater Lights

Custom Stainless footrest

Custom Isinglass Helm Enclosure

PlasDeck Aged Teak deck with offwhite lines - aft cockpit, helm, forward cockpit, sugarscoops and showers in heads



Aftermarket Rubrail Installed

Custom fishing rod holders

Under Galley Sink Water Filtration

Custom Storage Cabinet in Master Stateroom

Electric Flush Freshwater Heads with Saltwater Option

Bio Bidet Toilet Upgrade in Master Head

Freshwater or Saltwater Deck Washdown

AB Aluminum Dinghy with 25HP Yamaha Outboard with Custom Canvas Cover

**The list goes on...**

**Arrived in Riviera Beach** - US Import duty paid, available to all Buyers, including US - Never Hurricane Damaged

\* Preliminary Listing, Please contact your broker for more details and full Inventory list

## Основная информация

---

**Тип судна:** Катамаран

**Модельный год:** 2019

**Год постройки:** 2019

**Страна:** United States

## Размеры

---

**Длина общая:** 45' 0" (13.72m)

**Ширина:** 24' 2" (7.37m)

## Скорость, вместимость и масса

---

**Вместимость воды:** 206 Gallons

**Вместимость сточного бака:** 45 Gallons

**Объем топливного бака:** 185 Gallons

---

## Размещение

---

Всего кают: 3

Всего ком. состава: 3

---

## Корпус и палуба

---

Материал корпуса: Fiberglass

---

## Информация о двигателе

---

Двигатели: 1

Производитель: Unknown

# ПОДРОБНОЕ ОПИСАНИЕ

---

## Manufacturer Provided Description

---

Founded upon the ethos of continuous innovation and feedback from cruising clients, the new Leopard 45 sailing catamaran represents astute value, elegant lines and satisfies blue water passion.

With naval architecture by Simonis & Voogd Yacht Design, and with exterior and interior design by the world-class design team at Robertson and Caine, the Leopard 45 Sailing Catamaran not only builds on the best features of the current Leopard range, but most notably offers new exterior styling and enhanced interior accommodation.

The exterior styling has evolved from the more curvaceous deck features on the current Leopard range, into a sharper, more angular look, topped by a sleek new saloon hardtop, which extends from aft cockpit to forward cockpit.

Available in a 3 or 4 cabin layout, the Leopard 45 offers the perfect entertainment package with increased aft area with new layout, ergonomically designed open plan saloon and galley, larger forward cockpit, and more onboard area.

She's sleek and nimble, yet comfortable. She incorporates a heritage of Leopards spanning twenty five years of production expertise.

In summary, the Leopard 45 Sailing Catamaran delivers uncompromised, exceptional build quality throughout, new, sleek styling, a sensible and practical layout, sailing comfort across all sea states, and features innovative technologies and multiple entertainment areas.

## Innovation

---

With uncompromised and exceptional build quality, and a pedigree of over 1500 blue water catamarans, Leopard has set the standard for cruising catamarans.

Despite its larger living areas and its higher level of sophistication, the Leopard 45 is faithful to its pedigree of robust, easy to maintain, easy to maneuver, blue water catamarans.

## Comfort

---

At Leopard we favor a clear, natural flow. The Leopard 45's increased area, ergonomically designed open plan saloon and galley, increased forward cockpit and more onboard area make her the ideal catamaran for guest entertaining as well as long-range cruising.

Onboard entertaining is accentuated with ample dining space, and forward facing L shaped

seating communicating directly with the galley, situated forward. Wide sliding saloon doors afford panoramic views towards the stern, allowing the interior saloon to flow naturally towards the outside aft and forward cockpit.

The boat is flooded with natural light during the day and after sunset, illuminated by subtle hidden lighting, with individual spotlights to highlight certain areas.

---

## Interior

---

The Leopard 45 has been overhauled with full wrap around panoramic windows, a saloon size overhead skylight and enlarged hull windows. The interior design is modern and simple with an elegant, light finish and grey accent panels. The increased volume of the saloon provides ample space for on-board entertaining.

The yacht is available with either a 3 or 4 cabin layout. The 3 cabin layout features two guest cabins in the port hull, both with en-suite heads and shower stalls. The entire starboard hull is dedicated to a spacious owner's suite with a master cabin, study desk/ vanity and a private head with a large shower stall.

In comparison to it's predecessor, the volume below deck has been increased, making it open and unrestricted. The storage areas are plentiful and will accommodate your requirements whether it be hanging, drawers or under floor storage.

The boat is comfortable, private and well- ventilated from multiple points. The atmosphere is enhanced by natural light provided by the enlarge hull windows, portlights and deck flush hatches.

---

## Craftsmanship

---

Designed for a modern, blue water lifestyle, the Leopard 45 features a raised helm station covered by a hardtop bimini, with direct access from the cockpit and side deck. All sailing lines lead to easily accessible winches, the primary winches being electric, and operated by footswitches.

The exterior styling has evolved into a sharper, more angular look, topped by a sleek new saloon hard top, which extends from the aft cockpit to the forward cockpit. Spacious, practical and protected from the sun, the aft deck offers the perfect entertainment area with its ample seating and a clear natural flow through the open plan saloon. Accessible via a weather tight door. the increase forward cockpit provides way access to the fore deck and trampoline. Additionally, the forward cockpit allows for superior ventilation naturally throughout the boat.

---

## Disclaimer

---

The Company offers the details of this vessel in good faith but cannot guarantee or warrant the accuracy of this information nor warrant the condition of the vessel. A buyer should instruct his agents, or his surveyors, to investigate such details as the buyer desires validated. Hours listed may vary from actual hours due to recent use. Purchaser is encouraged to verify hours prior to purchase. This vessel is offered subject to prior sale, price change, or withdrawal without notice.

## **Исключения**

---

При продаже яхты исключаются личные вещи владельца.

## **Отказ от ответственности**

---

Компания предоставляет описание судна или яхты добросовестно, но не может гарантировать точность этой информации, а также не ручается за техническое состояние. Покупатель должен проинструктировать своих агентов или оценщиков исследовать представленную информацию более подробно, по собственному желанию. Продажа судна или яхты, изменение цены или снятие с продажи будет происходить без предварительного уведомления.

# ФОТОГРАФИИ

2



3



4



5



6



7



8



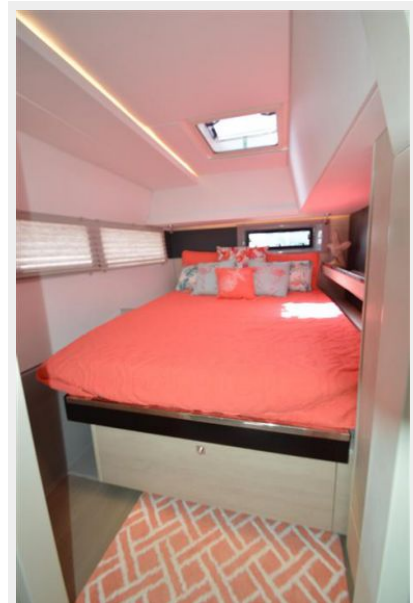
9



10



11



12



13





14



15



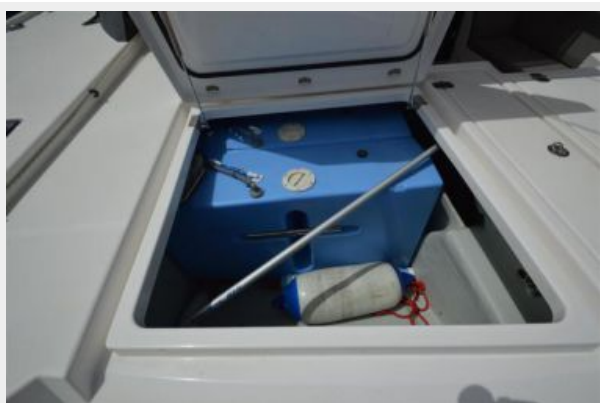
16



17



18



19





20



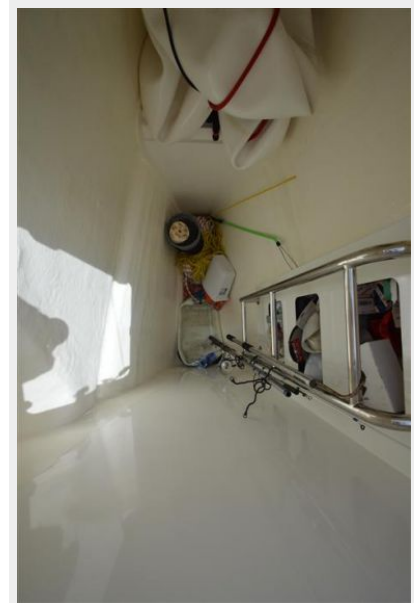
21



22



23



24



25



26



27



28



29



30



31



33

32





34



35



36



37



38



39



40



41



42



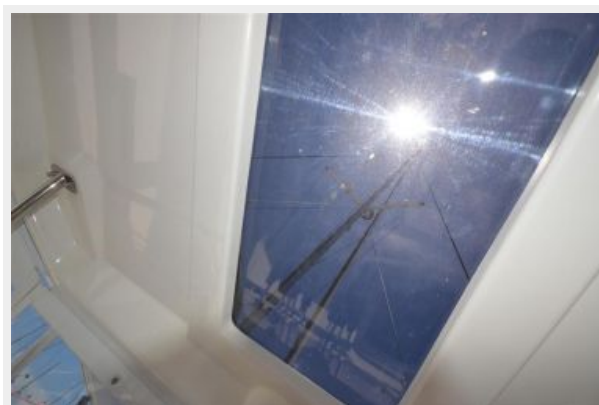
43



44



45



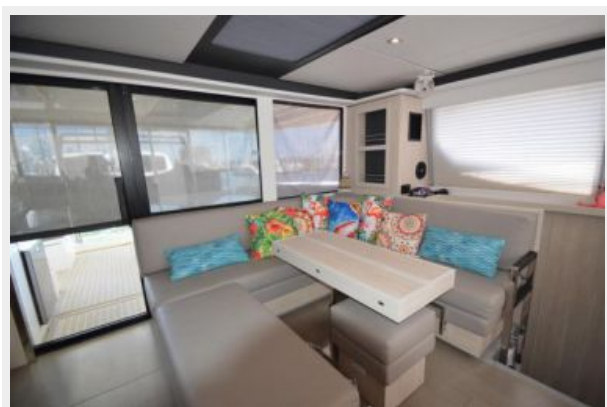
46



47



48



49





50



51



52



53



54



55



56



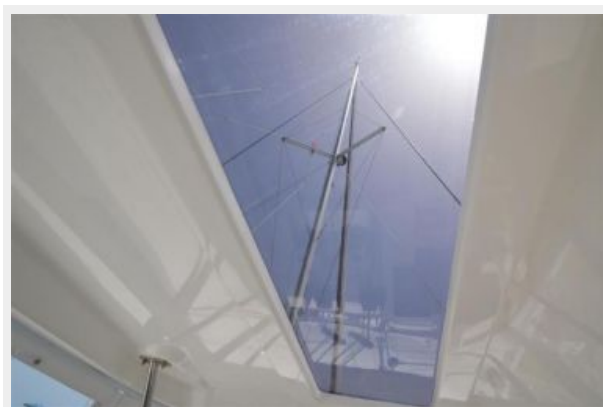
57



58



59



60



61





62



63



64



65



66



67



68



69



70



71



72



73





74



75



76



77



78



79



80



81



82



83



85



84





86



87



88



89



90



91



92



93



94



95



96



97





98



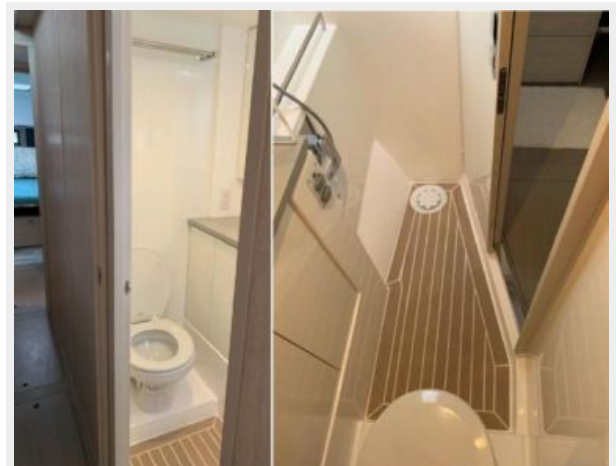
99



100



101



102



103



104



105



106



107



108

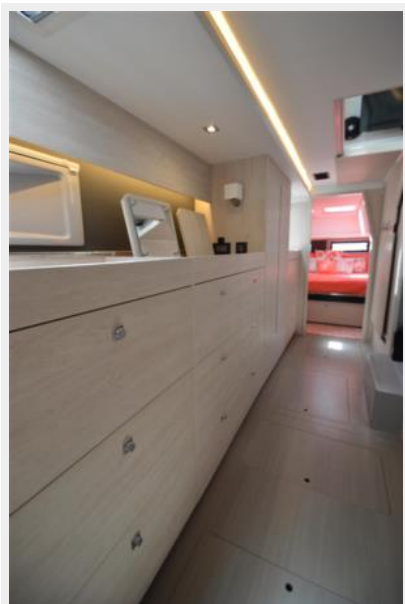


109





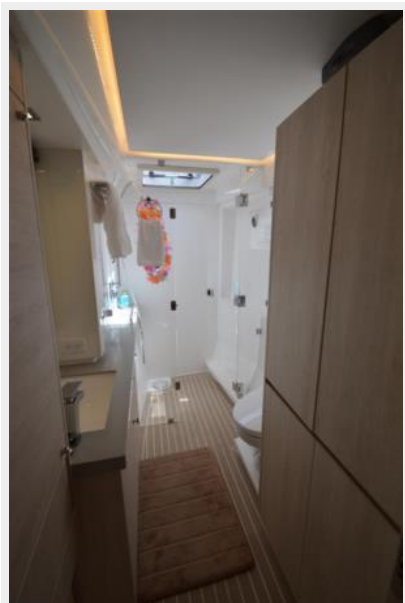
110



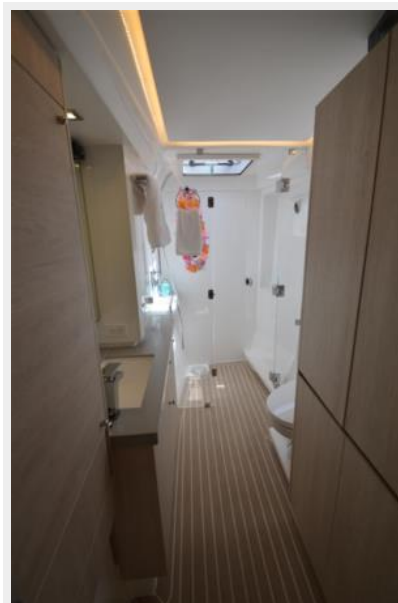
111



112



113



114



115



116



117



118



119



120



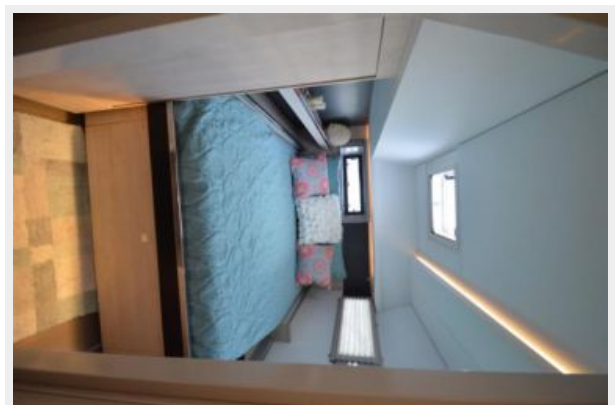
121



122



123



124



125



126



127



128



129



130



131





132



# КОНТАКТЫ

---

Андрей Шестаков (Andrey Shestakov) – ведущий яхтенный брокер отдела продаж яхт и судов компании Shestakov Yacht Sales Inc. Официальный представитель Shestakov Yacht Sales Inc. для русскоговорящих клиентов в центральном офисе компании в Майами/Форт Лодердейл/Флорида/США.

## Контактная информация

---

Email: [andrey@shestakovyachtsales.com](mailto:andrey@shestakovyachtsales.com)

Web: [shestakovyachtsales.com](http://shestakovyachtsales.com)

## Телефоны

---

Краснодарский край: **+7(918)465-66-44**

США, Майами, Флорида: **+1(954)274-4435**

## Время работы

---

Понедельник – Суббота: **9:00 - 21:00**  
EDT

Воскресенье: **Закрето**

## Адрес

---



Harbour Towne Marina, 850 NE 3rd St,  
STE 213, Dania, FL 33004