

AQUA VILLA — NORSEMAN YACHTS



Судостроитель: NORSEMAN YACHTS

Год постройки: 2010

Модель: Мега-яхта

Цена: **ЦЕНА ЯХТЫ ПО ЗАПРОСУ**

Местонахождение: United States

Длина общая: 80' 0" (24.38m)

Ширина: 20' 0" (6.10m)

Мин. осадка: 5' 10" (1.78m)

Макс. осадка: 5' 10" (1.78m)

Крейс. скорость: 14 Kts. (16 MPH)

Макс. скорость: 22 Kts. (25 MPH)

Купить Aqua Villa — NORSEMAN YACHTS а также выбрать подходящую вам яхту из нашего каталога яхт вам поможет опытный яхтенный брокер Андрей Шестаков. На сегодняшний день компания Shestakov Yacht Sales Inc. имеет большое количество яхт в собственном списке продаж, а также тесно сотрудничает со всеми крупными яхтенными производителями по всему миру.

Для того чтобы купить яхту Aqua Villa — NORSEMAN YACHTS а также проконсультироваться по любому вопросу связанному с покупкой, продажей, чартером яхт позвоните по телефону **+7(918)465-66-44**.

ОГЛАВЛЕНИЕ

ОГЛАВЛЕНИЕ	2
ХАРАКТЕРИСТИКИ	5
Обзор	5
Основная информация	5
Размеры	5
Скорость, вместимость и масса	6
Размещение	6
Корпус и палуба	6
Информация о двигателе	6
ПОДРОБНОЕ ОПИСАНИЕ	7
Accommodations	7
Galley	9
Main Salon	10
Sky Lounge	10
Bridge	10
Deck	11
Mechanical & Electrical	11
Laundry Area	12
DISCLAIMER	12
Исключения	13
Отказ от ответственности	13
ФОТОГРАФИИ	14
Screen Shot 2020-07-06 at 2.48.27 PM	14
Screen Shot 2020-07-06 at 2.48.21 PM	14
Screen Shot 2020-07-06 at 2.48.37 PM	14
Screen Shot 2020-07-06 at 2.48.42 PM	14
Screen Shot 2020-07-06 at 2.48.48 PM	14
Screen Shot 2020-07-06 at 2.48.53 PM	14

Screen Shot 2020-07-06 at 2.49.00 PM	15
Screen Shot 2020-07-06 at 2.49.06 PM	15
Screen Shot 2020-07-06 at 2.49.19 PM	15
Screen Shot 2020-07-06 at 2.49.12 PM	15
Screen Shot 2020-07-06 at 2.49.25 PM	15
Screen Shot 2020-07-06 at 2.49.36 PM	15
Screen Shot 2020-07-06 at 2.49.42 PM	16
Screen Shot 2020-07-06 at 2.49.49 PM	16
Screen Shot 2020-07-06 at 2.49.55 PM	16
Screen Shot 2020-07-06 at 2.50.01 PM	16
Screen Shot 2020-07-06 at 2.50.10 PM	16
Screen Shot 2020-07-06 at 2.50.18 PM	16
Screen Shot 2020-07-06 at 2.50.36 PM	17
Screen Shot 2020-07-06 at 2.50.30 PM	17
Screen Shot 2020-07-06 at 2.50.49 PM	17
Screen Shot 2020-07-06 at 2.50.42 PM	17
Screen Shot 2020-07-06 at 2.51.07 PM	17
Screen Shot 2020-07-06 at 2.50.56 PM	17
Screen Shot 2020-07-06 at 2.51.18 PM	18
Screen Shot 2020-07-06 at 2.51.12 PM	18
Screen Shot 2020-07-06 at 2.51.31 PM	18
Screen Shot 2020-07-06 at 2.51.24 PM	18
Screen Shot 2020-07-06 at 2.57.07 PM	18
Screen Shot 2020-07-06 at 2.57.02 PM	18
Screen Shot 2020-07-06 at 2.57.18 PM	19
Screen Shot 2020-07-06 at 2.57.12 PM	19
Screen Shot 2020-07-06 at 2.57.26 PM	19
Screen Shot 2020-07-06 at 2.57.33 PM	19
Screen Shot 2020-07-06 at 2.57.39 PM	19

Screen Shot 2020-07-06 at 2.57.44 PM	19
Screen Shot 2020-07-06 at 2.57.52 PM	20
КОНТАКТЫ	21
Контактная информация	21
Телефоны	21
Время работы	21
Адрес	21

ХАРАКТЕРИСТИКИ

Обзор

'Aqua Villa' is a fresh-water kept 80ft custom tri-deck yacht built by the famous Heesen Superyacht designer Gary Grant at the Norseman Shipyard. She is a well-kept, one owner yacht, with the same volume as an 100+ foot vessel. Aqua Villa boasts uniquely curved windows throughout, a Portuguese bridge and some of the finest cabinetry and woodwork seen on any other yacht. Norseman's master craftsmanship, attention to detail and drive for excellence has left 'Aqua Villa' a leader in her class.

Her key features include:

- Wesmar Stabilizers accompanied by Bennett trim tabs for a comfortable ride even in rough sea conditions.
- Side Power Bow & Stern Thrusters for easy docking, especially for owner operation of the vessel.
- Twin Caterpillar C32 Engines with low hours.
- 2 Cummins Onan Generators with an additional Cummins Onan Night / Emergency Generator.
- Kabola HR500 Efficient Hydronic Diesel Heating Systems ideal for winter cruising.
- Copeland Air-conditioning system.
- Tender garage with Avon Seasport 430 Jet SC DL RIB tender.
- Six person Jacuzzi on Sky Lounge Deck.
- Accommodation for nine guests and two crew in six staterooms.
- Infinite amount of storage throughout the vessel leaving barely any unused or void spaces.

Основная информация

Тип судна: Мега-яхта

Модельный год: 2010

Год постройки: 2010

Страна: United States

Вертолетная площадка: Да

Размеры

Длина общая: 80' 0" (24.38m)

Ширина: 20' 0" (6.10m)

Мин. осадка: 5' 10" (1.78m)

Макс. осадка: 5' 10" (1.78m)

Скорость, вместимость и масса

Крейс. скорость: 14 Kts. (16 MPH)

Макс. скорость: 22 Kts. (25 MPH)

Водоизмещение: 160000 Pounds

Чистый вес: 160000 Pounds

Вместимость воды: 900 Gallons

Вместимость сточного бака: 130 Gallons

Объем топливного бака: 2300 Gallons

Размещение

Всего кают: 3

Корпус и палуба

Материал корпуса: Fiberglass

Информация о двигателе

Двигатели: 2

Производитель: Caterpillar

Модель: C32

Тип двигателя: Inboard

Тип топлива: Diesel

ПОДРОБНОЕ ОПИСАНИЕ

Accommodations

Master Cabin

- On deck master with custom rounded windows that give you a 240 degree field of view
- Island queen size berth with nightstands on either side
- 57 storage cupboards and drawers plus an extra cedar lined hanging closet
- Three-person built in settee to port along with an extra seat and vanity
- Samsung surround sound speakers with iPhone dock
- Push button drop down TV from deck head houses a 32inch Sony Bravia KDL-32EX301 TV
- Custom light filtering and blackout shades throughout
- Two opening portholes to let in the fresh sea breeze while underway

Large Master En Suite

- Twin Toto sinks
- Jacuzzi tub
- Toshiba 22inch TV with surround sound speakers
- Head Hunter Royal Flush head
- Pharo 5 jet shower with Raindance shower head
- Custom art work with hidden door and porthole that opens
- Nuheat heated tile deck
- 12 storage cabinets and drawers plus additional cedar lined hanging closet
- Built in Hava Magnification mirror

Main deck Day Head

- Bryan Rubino custom designed glass sink - Dale Chihuly's former master craftsman. The piece is called 'Lotus' and it is a living functional art piece
- Head Hunter Royal Flush head

Lower deck guest lobby

- Custom built in laser cut precious stone map of the world on the deck
- Above on the deckhead it a custom art piece of the milky way with fiber optic lighting similar to the inside roof of Rolls Royce cars

Aft VIP Cabin

- Full beam cabin with walk around queen berth
- Sony Bravia 42inch TV (Model: KDL-42V4100)
- Opening water-tight portholes
- Vanity with built in stainless steel and leather seat
- Additional built-in sofa chair
- Abundance of storage including book-case cabinets and cedar lined closets

Aft VIP cabin En Suite

- Head Hunter Royal Flush head
- Toto sink
- Hansgrohe Shower with seat

Lower deck port side mid cabin

- Double berth
- Sansui 22inch TV & DVD player (Model: HDLCDVD225)
- Cedar lined closet
- Multiple storage cabinets and drawers

Lower deck port side mid cabin En Suite

- Head Hunter Royal Flush head
- Toto sink
- Hansgrohe Shower with seat
- Mirror on hinge with doubles up as a privacy screen

Lower deck starboard side mid cabin

- Single berth designed to the same specifications as first class on Emirates Airline
- Fold down panel that transforms berth into additional desk and study area
- Desk with custom leather seat and MSI MS6657 built in computer
- Cedar lined closet

Forward VIP cabin

- Built in single person lounge chairs to both port and starboard
- Vanity
- BOSS BV4250 DVD and stereo unit
- Sony Bravia 32inch TV

- Additional custom storage cabinets
- Cedar lined closet

Forward VIP cabin En Suite

- Head Hunter Royal Flush head
- Toto sink
- Hansgrohe Shower with seat
- Mirror on hinge with doubles up as a privacy screen

Crew cabin

- Two single bunk berths designed to the same specifications as first class on Emirates Airline
- Desk with MSI MS6657 built in computer
- Cedar lined closet
- Built in vessel monitor system

Crew Cabin En Suite

- Head Hunter Royal Flush head
- Toto sink
- Hansgrohe Shower with seat
- Opening watertight porthole
- Additional exit onto swim-platform makes head dual usage as a good place to wash off after swimming

Galley

- Extra wide 34.5inch stainless steel Sonata sink
- Insinkerator filtered hot water and cold drinking water tap
- GE Profile double door refrigerator and freezer draw gives 14.57 cubic feet of refrigeration and 6.26 cubic feet of freezer storage (Model: PFCS1NJXB SS)
- Bosch 30inch wide oven
- GE Profile four burner induction cooktop
- GE Profile Advantium 120 range with speedcook microwave oven (Model: SCA1001KSS02)
- GE profile trash compactor (Model: GCG1580P0SS)
- Fisher & Paykel Dual dish washer draws (Model: DD24DCTX6)
- Additional undercabinet LED lighting throughout
- Customs storage build in from factory
- Danby Silhouette 51 bottle wine refrigerator (Model: DWC512BLS-1)

Main Salon

- Seating for eight guests around a custom leather coffee table which slides open for additional storage
- Opposite is a cabinet which houses a Sony Bravia 46inch KDL-46Z4100 TV unit with Bose surround sound
- Denon AVR-590 Amplifier
- Direct TV unit
- Panasonic DMP-BD60 BlueRay Player
- Forward to port is the main dining table which seats eight guests
- To starboard is a bar with a Uline ULN-BI95B-00 ice maker

Sky Lounge

- Nearly 8ft high deck head height on the Sky Lounge deck

Bar area:

- Uline refrigerator and icemaker U-C01175B-00
- Frigidaine Microwave
- Rafu dual burner stove top
- 15inch diameter stainless steel sink with Grohe facet
- Insinkerator filtered hot water and cold drinking water tap
- 2 x leather and stainless steel bar stools

- Starboard aft corner of Skylounge is a desk with custom leather chair
- Forward of this is Skylounge day head with Bryan Rubino custom designed glass
- L-Shaped lounge area with table seats five guests and is designed to replicate Warren Buffet's Berkshire Hathaway owned Corporate Jet
- Opposite is a Sony Bravia KDL-42V4100 TV
- Yamaha RX-V367 Amplifier
- Bose Subwoofer
- Direct TV unit
- Toshiba DVD player

Bridge

- Custom Norseman gloss solid wood and stainless steel steering wheel
- Side Power Bow and Stern thrusters
- Bennett Trim Tabs
- 2 x Maxwell AA560 Anchor Chain Counter and Controls

- Wesmar CPS 1000 Gyro Controller Stabilizer system
- Icom IC-M604 VHF unit
- 2 x Furuno Navnet ECS units
- Sumas SM-30BT Bluetooth stereo unit
- Stidd Black leather helm seat
- Dual bridge wing control stations
- Four person lounge chair with expanding table

Deck

Foredeck

- 2 x Maxwell 3500 anchor capstans connected to 2 x 316 Stainless Steel Ships Anchors
- 6 x built in locker fender storage holders
- Guest lounge area

Main Deck Aft

- 2 x Maxwell 2200 Capstan's with stainless steel cleats
- Lounge chair for six guests plus four additional fold out chairs that surround an oval shaped solid timber varnished table
- Sink to port
- Aft deck engine control station to port
- Kenwood Pandora KMR-555U stereo unit
- Icom IC-M604 VHF unit
- Raymarine Tridata log, speed and depth gauge

Sky Lounge Deck Aft

- 10 person Jacuzzi surrounded by a rounded lounge chair
- 2 x varnished teak coffee tables surrounded by a built in lounge chairs

Wet bar which includes:

- Galley Mate 200811 Stainless Steel Australian Propane Grill
- Sink

Mechanical & Electrical

Engine room

- Twin Caterpillar C32 1652hp engines connected to ZF Friedrichshafen - ZF2060A transmissions
- Cummins Onan MDKBT-5936480 27.5kw Generator
- Cummins Onan MDKBU-5872225 32kw Generator
- 2 x Copeland ZR61K3-TF5930 air conditioning units connected to a Marathon Circulating pump and SMV vector Lenze control units
- FCI Max Q Watermaker MQ1226S that gives you 48.6 gal per hour
- Sea Fire FM200 4BW automatic fixed fire system
- 6 x TUV SUD extractor fans
- Two Racor fuel filters per engine
- Wesmar Stabilizers
- Kabola HR500 Efficient Hydronic Diesel Heating System
- Upgraded spring mounted stainless underwater exhaust system
- 2 x Xantrex SW Series Inverter / Charger
- Victron Energy Centaur Battery charger 12 volt
- Victron Energy Centaur Battery charger 24 volt
- Charles Industries Solid Power Converter PM3 Master Control System unit
- 2 x Charles Industries Solid Power Converter PM3 Power Isolation Transformer unit

Engine Control Room (ECR)

- Charles Industry Monitor Unit
- Main breaker panel
- 3 x Generator remote start units
- Soundproof engine room viewing window

Generator Room

- Cummins Onan 9kw night / emergency generator
- One of two Glendenning Cable-master units with 100ft of cable in each

Laundry Area

Lower deck aft Laundry Area

- Bosch Axxis WNM55 17.7 lb washing machine unit
- Bosch Axxis WTV76100US dryer unit
- 20inch Wide Stainless steel sink with Grohe fauce

DISCLAIMER

The Company offers the details of this vessel in good faith but cannot guarantee or warrant the accuracy of this information nor warrant the condition of the vessel. A buyer should instruct his agents, or his surveyors, to investigate such details as the buyer desires validated. Hours listed may vary from actual hours due to recent use. Purchaser is encouraged to verify hours prior to purchase. This vessel is offered subject to prior sale, price change, or withdrawal without notice.

Исключения

При продаже яхты исключаются личные вещи владельца.

Отказ от ответственности

Компания предоставляет описание судна или яхты добросовестно, но не может гарантировать точность этой информации, а также не ручается за техническое состояние. Покупатель должен проинструктировать своих агентов или оценщиков исследовать представленную информацию более подробно, по собственному желанию. Продажа судна или яхты, изменение цены или снятие с продажи будет происходить без предварительного уведомления.

ФОТОГРАФИИ

Screen Shot 2020-07-06 at 2.48.21 PM



Screen Shot 2020-07-06 at 2.48.27 PM



Screen Shot 2020-07-06 at 2.48.37 PM



Screen Shot 2020-07-06 at 2.48.42 PM



Screen Shot 2020-07-06 at 2.48.48 PM



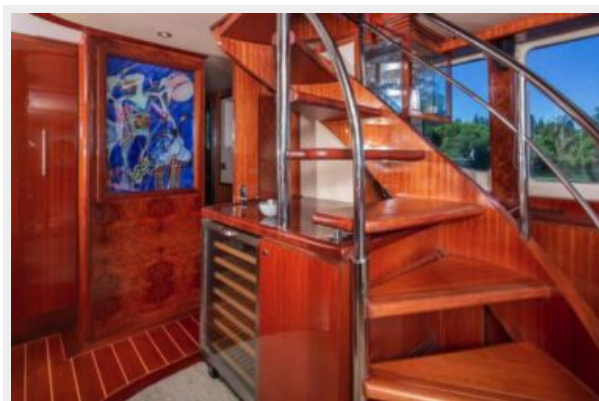
Screen Shot 2020-07-06 at 2.48.53 PM



Screen Shot 2020-07-06 at 2.49.00 PM



Screen Shot 2020-07-06 at 2.49.06 PM



Screen Shot 2020-07-06 at 2.49.12 PM



Screen Shot 2020-07-06 at 2.49.19 PM



Screen Shot 2020-07-06 at 2.49.25 PM



Screen Shot 2020-07-06 at 2.49.36 PM



Screen Shot 2020-07-06 at 2.49.42 PM



Screen Shot 2020-07-06 at 2.49.49 PM



Screen Shot 2020-07-06 at 2.49.55 PM



Screen Shot 2020-07-06 at 2.50.01 PM



Screen Shot 2020-07-06 at 2.50.10 PM



Screen Shot 2020-07-06 at 2.50.18 PM



Screen Shot 2020-07-06 at 2.50.30 PM



Screen Shot 2020-07-06 at 2.50.36 PM



Screen Shot 2020-07-06 at 2.50.42 PM



Screen Shot 2020-07-06 at 2.50.49 PM



Screen Shot 2020-07-06 at 2.50.56 PM



Screen Shot 2020-07-06 at 2.51.07 PM



Screen Shot 2020-07-06 at 2.51.12 PM



Screen Shot 2020-07-06 at 2.51.18 PM



Screen Shot 2020-07-06 at 2.51.24 PM



Screen Shot 2020-07-06 at 2.51.31 PM



Screen Shot 2020-07-06 at 2.57.02 PM



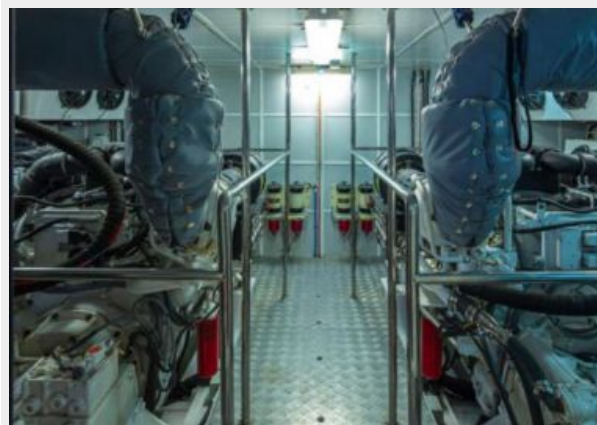
Screen Shot 2020-07-06 at 2.57.07 PM



Screen Shot 2020-07-06 at 2.57.12 PM



Screen Shot 2020-07-06 at 2.57.18 PM



Screen Shot 2020-07-06 at 2.57.26 PM



Screen Shot 2020-07-06 at 2.57.33 PM



Screen Shot 2020-07-06 at 2.57.39 PM



Screen Shot 2020-07-06 at 2.57.44 PM



Screen Shot 2020-07-06 at 2.57.52 PM



КОНТАКТЫ

Андрей Шестаков (Andrey Shestakov) – ведущий яхтенный брокер отдела продаж яхт и судов компании Shestakov Yacht Sales Inc. Официальный представитель Shestakov Yacht Sales Inc. для русскоговорящих клиентов в центральном офисе компании в Майами/Форт Лодердейл/Флорида/США.

Контактная информация

Email: andrey@shestakovyachtsales.com

Web: shestakovyachtsales.com

Телефоны

Краснодарский край: **+7(918)465-66-44**

США, Майами, Флорида: **+1(954)274-4435**

Время работы

Понедельник – Суббота: **9:00 - 21:00**
EDT

Воскресенье: **Закрито**

Адрес



Harbour Towne Marina, 850 NE 3rd St,
STE 213, Dania, FL 33004