

PANACEA (RESERVED) — HATTERAS



Builder: HATTERAS

Year Built: 2008

Model: Motor Yacht

Price: PRICE ON APPLICATION

Location: United States

LOA: 72' 0" (21.95m)

Beam: 20' 2" (6.15m)

Min Draft: 5' 3" (1.60m)

Max Draft: 5' 5" (1.65m)

Cruise Speed: 17 Kts. (20 MPH)

Max Speed: 22 Kts. (25 MPH)

Our experienced yacht broker, Andrey Shestakov, will help you choose and buy a yacht that best suits your needs **PANACEA (Reserved) — HATTERAS** from our catalogue. Presently, at Shestakov Yacht Sales Inc., we have a wide variety of yachts available on our sale's list. We also work in close contact with all the big yacht manufacturers from all over the world.

If you would like to buy a yacht **PANACEA (Reserved) — HATTERAS** or would like help answering any questions concerning purchasing, selling or chartering a yacht, please call **+1(954)274-4435**

TABLE OF CONTENTS

TABLE OF CONTENTS	2
SPECIFICATIONS	7
Overview	7
Basic Information	7
Dimensions	7
Speed, Capacities and Weight	7
Accommodations	8
Hull and Deck Information	8
Engine Information	8
DETAILED INFORMATION	9
Vessel Walkthrough	9
Salon	9
Salon Entertainment Electronics	10
Dayhead	11
Galley	11
Galley/Dinette Area	11
Accommodation Companionway	12
Forward VIP Cabin	12
Forward VIP Head	13
Forward Guest Head	13
Midship VIP Cabin	13
Starboard Side Guest Cabin	14
Master Cabin	14
Master Heads	14
Foredeck	15
Side Decks	16
Aft Deck	16
Swim Platform	17

Enclosed Bridge	17
Flybridge Helm	18
Hardtop Equipment	19
Boat Deck	19
Tender	20
Crew Area	20
Captain's Cabin	20
Crew Head	21
Engine Room	21
Engine Maintenance	22
Electrical	23
Voice and Digital Communication	23
Construction Notes	24
Comments	24
Exclusions	25
Disclaimer	25
PHOTOS	26
Salon looking fwd	26
Salon looking to stbd	26
Salon bar	26
Salon aft port corner	26
Behind salon bar	26
Dining area	26
Dining Table	27
Salon looking aft	27
Day Head	27
Galley looking forward	27
Galley looking to port	27
Galley looking to stbd	27

Galley looking aft	28
Galley island	28
Galley dining and side deck door	28
Galley dining	28
Port side deck door and steps to accommodations	28
Forward companionway	28
Forward laundry	29
Forward VIP	29
VIP Head	29
Guest head	29
Mid VIP	29
Mid VIP looking aft	29
Stbd guest cabin	30
Master looking aft	30
Master to port	30
Master to stbd	30
Master fwd to port	30
Master fwd to stbd	30
His head	31
His head	31
Shower	31
Her head	31
Her head	31
Bow	31
Bow seat	32
Windlass detail	32
Bow	32
Twin bow 100amp Glendennings	32
Stbd side Marquipt storage	32

Overhead fender storage	32
Aft deck	33
Aft deck	33
Cruising	33
Boat deck steps	33
Enclosed Flybridge	33
Hard side bridge windows	33
Flybridge bar	34
Flybridge dining to stbd	34
Flybridge seating to port	34
Flybridge looking aft	34
Helm looking to port	34
Helm looking to stbd	34
Helm	35
Boat deck seating	35
Boat deck seating	35
Boat deck looking fwd	35
2015 15' Walker Bay	35
15' RIB Bimini top	35
15' RIB console	36
15' RIB 75HP outboard	36
Crew cabin	36
Crew head	36
Engine room looking fwd	36
Crew laundry	36
Port engine	37
Stbd engine	37
Stbd generator	37
Forward aft stbd engine	37

Port generator	37
Forward of port engine	37
Engine room looking aft	38
360 view	38
360 view	38
360 view	38
360 view	38
360 view	38
360 view	39
360 view	39
360 view	39
360 view	39
360 view	39
360 view	39
360 view	40
Sunroof open 360 view	40
GA	40
CONTACTS	41
Contact details	41
Telephones	41
Office hours	41
Address	41

SPECIFICATIONS

Overview

PANACEA is a very rare find. Owned by an experienced owner who knows and does what it takes to keep a boat in the top 5% condition of boats in this size and price range. Her equipment list is the best of the best, her services are up to date and her condition speaks for itself. Walkthrough video available. Smaller vessel trade-ins considered.

Basic Information

Category: Motor Yacht	Sub Category: Enclosed Bridge
Model Year: 2009	Year Built: 2008
Country: United States	Vessel Top: Hardtop

Dimensions

LOA: 72' 0" (21.95m)	Beam: 20' 2" (6.15m)
Min Draft: 5' 3" (1.60m)	Max Draft: 5' 5" (1.65m)

Speed, Capacities and Weight

Cruise Speed: 17 Kts. (20 MPH)	Max Speed: 22 Kts. (25 MPH)
Gross Tonnage: 72 Pounds	Water Capacity: 300 Gallons
Holding Tank: 330 Gallons	Fuel Capacity: 2200 Gallons

Accommodations

Total Cabins: 4

Total Berths: 5

Sleeps: 8

Total Heads: 5

Captain Cabin: True

Crew Cabin: 1

Crew Berths: 2

Crew Sleeps: 2

Crew Heads: 1

Hull and Deck Information

Hull Material: Fiberglass

Deck Material: Teak

Hull Configuration: Modified V-Hull

Hull Designer: Hatteras

Exterior Designer: Hatteras

Interior Designer: Hatteras

Engine Information

Engines: 2

Manufacturer: CAT

Model: C-32

Engine Type: Inboard

Fuel Type: Diesel

DETAILED INFORMATION

Vessel Walkthrough

Boarding **PANACEA** from a floating dock is easy, on to her integral swim platform and up five non-skid steps to the teak deck aft deck. (When needed, boarding steps are stowed neatly just in case). The aft deck has both built-in and loose seating around a high gloss teak table. Slim walk-around side decks are accessed from this area.

A three panel stainless steel trimmed dark glass door gives access via the sliding center panel. The large salon with six large side house windows is bright and airy.

Immediately to starboard is a swivel arm chair, built-in end table and a large four cushion sofa with storage below. A Zebra wood coffee table with nested stools lies in front. To port is a walk behind bar, the salon's TV and two swivel barrel chairs can turn to face the couch. Indoor access to the crew and engine room is from behind the bar.

Next forward is a round high gloss teak table with six upholstered dining chairs. Glass and dining storage is forward in several cabinets. To starboard is a Zebra wood hutch cabinet with storage and drawers within.

Next forward behind a sliding pocket door is the yacht's day head. To starboard and up one step is the fully equipped galley, foredeck access doors, a dinette and steps up to the flybridge and down to the accommodations.

The lower companionway has nine teak steps to starboard leading to a centerline companionway with a hidden laundry center, VIP forward, mid VIP, starboard side upper/lower cabin and the full beam master with his and her heads aft.

The Flybridge is nine steps up from the galley, is $\frac{3}{4}$ hard enclosed, fully air conditioned with a bar, seating, dining and access to the boat deck.

The aft crew area has a double berth with a single upper berth, a second laundry center, a very large head, full size chest freezer, engine room forward and secondary access from the swim platform

Salon

Entered via a centerline sliding glass door the salon is both comfortable and inviting. Equally suited for a dinner party or a relaxing day on the water, the finishes are decidedly high end and in perfect condition.

Fully carpeted plus a tan Sunbrella carpet runner as needed. Most surfaces have protective covers for when the owner is not aboard to keep PANACEA in as new condition. The timber is a high gloss African mahogany. The wood window blinds have a satin finish and a matching mock Roman shade at the top. Above, cool air is delivered from a full length fluted cornice.

Immediately to starboard upon entry is a swivel arm chair. Outboard is a built-in end table with table lamp. Next forward is an embossed leather four cushion sofa with massive hidden storage below. Lying in front is a Zebra wood and glass coffee table with two nesting stools to match the sofa arms.

To port is the salon's 49" Sony Bravia TV angled so everyone can see perfectly. A full surround sound system with hidden sub-woofer adds to the enjoyment. A walk behind step down bar is next forward. In front of the bar are two upholstered swivel barrel chairs that can turn to face the couch for conversation or serve as perfect height bar seats at the Black Galaxy two level granite bar. Located behind the bar is an under mount stainless steel sink, a Whirlpool stainless steel "clear ice" icemaker and two storage cabinets. Outboard under the side deck windows are six mahogany storage cabinets with felt lined fitted storage for a full complement of stem and bar ware. The sole behind the bar is Black Galaxy granite tiles with contrasting diamond corner inserts. Aft from this area is the internal steps to the crew and engine room area.

Next forward is a 60" round high gloss wood table with fixed high gloss timber base. Six high back python faux skinned leather chairs surround the table. Forward of the table are two glass door cabinets with Lucite shelves to display objets d'art. They frame an art niche, lit from above. Below are four mahogany cabinets for additional storage. To starboard is a Zebra wood two door storage cabinet with five drawers and six shelves within to store everything needed for a formal dinner aboard.

Overhead are five Boston Acoustics speakers and 43 LED ceiling lights arranged in specific areas and lit with a Lutron "scene" type lighting selector. Also in the salon are digital AC controls and a CO detector. The aft salon doors have a V-Kool clear film for heat and sun protection.

Salon Entertainment Electronics

The entertainment electronics locker is in a cabinet outboard of the crew stairs, just off the salon.

A professional rack system consists of:

- Onkyo AV receiver TXSR373
- Denon multizone AV surround receiver AVR-1908
- Xantech eight zone/eight source audio/video controller amplifier
- Samson Power Servo 120a
- Panasonic Blue Ray player located behind the salon TV

Dayhead

The Day Head is forward of the salon to starboard just after the pocket door that can be used to close off the salon. The bow front vanity has an Black Galaxy counter top with two storage drawers below. An undermount Kohler sink with a single lever chrome faucet is above. The sole is Black Galaxy tiles with contrasting light diamonds in the corners. The toilet is a Head Hunter push button model. Above the toilet is an oval fixed port light with Roman shades. The bulkheads have an attractive embossed heavy wall covering and the area above the sink is mirrored with a small medicine cabinet and a mirror overhead.

Galley

The galley is forward and one step up. The sole is Amtico planked teak. Five large windows facing forward and two to port offer plenty of ambient lighting. A center island with four drawers, a SubZero glass front wine cooler and an Black Galaxy top greatly increase the work space.

Features of the galley include:

- Sharp carousel stainless convection/microwave
- Kitchen Aid 4 burner glass cooktop
- Whirlpool stainless under-counter oven
- Whirlpool wood front trash compactor
- Whirlpool stainless steel dishwasher
- SubZero stainless steel two door fridge/freezer with ice/water thru the door and a top mounted compressor
- Central vacuum outlet
- (13) high gloss mahogany cabinets, two for fitted glassware
- Pull out spice rack
- Pull out storage cabinet
- (8) LED overhead lights on a dimmer, (4) under-counter lights
- Under-mount stainless steel sink with garbage disposal
- Chrome pull out faucet
- Separate drinking water tap
- Raymarine CAM 50 CCTV camera

Galley/Dinette Area

Forward and adjacent to the galley is a dinette to seat 4 to 5 people. A Black Galaxy free form table sits upon two stainless steel pedestals. There are four drawers to starboard and additional storage under the cushions. Also in this area are port and starboard pantograph side deck doors, stereo speakers, LED rope lights under the dinette, 6 dimmable LED lights above, digital A/C controls and a CO detector.

A Sharp Aquos 19" LCD TV faces the dinette, hung from the overhead.

Accommodation Companionway

From the starboard side of the galley there are nine varnished teak steps with LED step lights leading below. Along the way is the yacht's main switch panel, three storage cabinets, the central vacuum system and a locker with a Xantech 4 channel amplifier. The steps curve to face inboard. Immediately aft are two cherry doors which conceal a separate front loaded Whirlpool washer and dryer. Above are two storage lockers for laundry soaps, etc.

Going forward and up two steps is the forward VIP and the ensuite head. Next aft is the guest head serving both the midship VIP and the starboard side guest cabin. The midship VIP is next aft to port. Across the companionway is an over/under cabin. All the way aft is the king size master cabin with his and her heads.

Located below the forward companionway is the following equipment:

- Fresh water accumulator tank for toilets
- Water heater
- Toilet fresh water distribution manifold
- High water alarm
- (2) Shore power transformers

Forward VIP Cabin

Two steps up from the main companionway all the way forward is the ensuite VIP cabin. An island double berth with a (new 2014) Zero mattress is forward off the mirrored forward bulkhead. The berth is raised and accessible by port and starboard carpeted steps. Two high gloss varnished drawers are at the foot of the berth. An LED strip light surrounds the upper base of the berth. Overhead is a large opening deck hatch with an Ocean Air sliding shade and screen. Each berth has a halogen reading light. To both port and starboard below the fluted A/C delivery vents are six port and six starboard high gloss mahogany cabinets. Below is padded hull liner and a mahogany shelf to serve as a night stand. The starboard side terminates into a drawer and hamper style locker followed by the entry to the ensuite forward VIP head.

The port side terminates into a full size cedar lined auto lit hanging locker. Within the locker is a digital A/C control, a Xantech stereo control and a Direct TV receiver. On the aft bulkhead is a Samsung 28" LED TV. A hatch in the sole accesses the bow thruster, a 110v outlet and a hold light. A full size dressing mirror is on the interior of the door. Above are two Boston Acoustic stereo speakers and seven halogen mini spots. 8,000 BTU self-contained A/C unit (new 4/19).

Forward VIP Head

The private head has a two door bow front vanity with a marble counter top and a Kohler china sink and widespread faucet set above. Two mirrored door medicine cabinets and an A/C vent are above. LED strip lights below the vanity serve as night lights. The toilet is a Head Hunter model set upon an Emperador dark marble sole with contrasting diamond tiles of Emperador light marble. The stall shower has a curved clear Lexan door, marble seat, hand held or wall mountable fixtures, a light and an exhaust fan. There are four dimmable halogen mini spots in the mirrored overhead. There is also a warning light to indicate when the holding tank is nearly full.

Forward Guest Head

Entered from the centerline companionway, the forward guest head serves the midship VIP with a private door and the starboard side guest cabin. The private head has a two door bow front vanity with a Emperador dark marble counter top and a Kohler china sink and widespread faucet set above. Two mirrored door medicine cabinets and an A/C vent are above. LED strip lights below the vanity serve as night lights. The toilet is a Head Hunter model. The floor is Emperador Light with Emperador dark diamond tiles. The stall shower has a curved clear Lexan door, marble seat, hand held or wall mountable fixtures, a light and an exhaust fan. There are four dimmable halogen mini spots in the mirrored overhead. There is also a warning light to indicate when the holding tank is nearly full.

Midship VIP Cabin

The midship VIP cabin is entered from centerline forward with a queen size berth (new Zero mattress 2014) athwartship off the outboard bulkhead. The mattress lifts up to reveal storage under the berth. LED strip lights surround the toe kick of the berth. The headboard is inset slightly with a mirrored panel above an upholstered panel. Overhead and directional reading lights offer plenty of light. To both port and starboard are four drawer night stands with high gloss timber tops.

Above are small three shelf cedar lockers between a soffit type A/C delivery vent gives cool air without blowing directly on the berth.

On the forward bulkhead is the secondary door into the forward guest head. On the inboard bulkhead is a 32" Samsung LED TV. On the aft bulkhead is a two door cedar lined auto lit hanging locker with the cabins digital A/C controls, the Xantech stereo control, a Direct TV receiver and a Denon DVD player within. The cabin has two Boston Acoustic stereo speakers, five halogen mini spots, a CO alarm and a smoke alarm. 16,000 BTU self-contained A/C unit (new 7/19).

Starboard Side Guest Cabin

The starboard side guest cabin is entered via a companionway door just outside the master cabin. Two full size bunks are outboard arranged in an over/under fashion. Rope lights below the lower bunk serve as night lights. Each berth has a reading light. A 20" Sharp Aquos TV faces aft. Also in this cabin are digital AC controls, two stereo speakers, a Xantech stereo control panel, a CO detector, a smoke detector and four halogen mini spots above.

Master Cabin

Upon entering the master cabin, one step down is an ultra-plush off white carpet surrounding a centerline king size berth with storage below the Zero mattress (new 2014). LED strip lights are hidden in the toe kick of the berth.

The headboard is white Ostrich embossed leather with an attractive dark wood and stainless steel frame. Twin sconce lights sit upon alternating squares of high gloss walnut to form a bulkhead that needs no artwork! Above, a mahogany two level soffit delivers cool air with an even flow dropping on the berth from above. Two additional LED ceiling lights serve as reading lights. Each side of the berth has a four drawer high gloss night stand. The 'his' side has the Hatteras MX3000i Dynamic Entertainment system remote.

The forward bulkhead of the suite has a smaller cedar lined auto lit 'his' closet to starboard and a built-in Sharp Aquos 32" LED and a considerably larger 'hers' cedar lined, auto lit hanging locker to port.

Within the large locker are the cabin's digital A/C control, Xantech stereo control panel, a digital safe, a Kaleidoscope movie storage system and a dressing mirror on the inside of the outboard door.

To both port and starboard are banks of twelve high gloss mahogany drawers with a varnished mahogany top. Above are three large oval port lights the center of which opens for emergency escape. Hunter Douglas black out shades offer privacy and are hidden by the mock Roman shades when retracted. LED strip lights are in the two level mahogany soffits above.

The aft bulkhead has entrances to both the 'his' and 'her' heads, either side of the island berth. Also in this cabin are 18 LED overhead dimmable spots, a 5 channel Boston Acoustic speaker system, a CO detector and smoke detector. (1) larger 16,000 BTU self-contained A/C unit (new 2/15) replaced two smaller units.

Master Heads

Connected by a large walk through shower, the his and her heads extend across the beam of the

yacht.

HIS HEAD

A bow front high gloss mahogany vanity has LED strip lighting and three cabinet doors and one drawer below a Blue Pearl granite counter top with a Kohler undermounted china sink and wide spread faucet set above. Three medicine cabinets with mirrored doors offer plenty of storage. The vanity has a return on the aft bulkhead with two more cabinet doors, two drawers and a continuation of the Blue Pearl granite counter top. A Head Hunter toilet sits on white marble tiles with Blue Pearl diamond insets. The overhead is mirrored and has 8 overhead LED lights, an exhaust fan and an A/C vent.

SHOWER

The shower has clear doors port and starboard along with half height side lights. White marble tiles with a Blue Pearl bench seat and Blue Pearl design in the white marble on the aft bulkhead offer a clean look. The separate shower fixtures are both wall mounted and hand held with a gleaming chrome finish. Two dedicated lights are above.

HERS HEAD

A bow front vanity has LED strip lighting and three cabinet doors and a drawer below the Blue Pearl counter top with a Kohler china sink and a wide spread chrome fixture. Above are three mirrored medicine cabinets. Continuing inboard is a slightly lower Blue Pearl vanity with a drawer and an upholstered stool with the entire aft bulkhead of the area mirrored. The Head Hunter toilet sits upon a white marble sole with Blue Pearl diamond inserts. Seven dimmable LED lights are in the mirrored ceiling above. Also in the head is an exhaust fan, an A/C vent and a clear glass door in to the centerline shower. Both heads have "do not flush" indicators.

Foredeck

- Fiberglass non-skid decks
- Stainless steel hoop rails
- Stainless steel removable burgee pole and socket
- Stainless steel anchor chute
- Stainless steel plow style anchor with approx. 200' of chain
- Port and starboard access hatches to anchor locker
- Maxwell 4000 hydraulic windlass with chain stopper
- Up and down foot switches for windlass
- Quick disconnect for freshwater hose
- (2) 240 volt A/C 100 amp shore cored inlets with Glendenning cablemaster reels and actuator buttons
- Sun lounge cushions and cover, raised off deck slightly with stainless steel safety rails
- Adjustable back rests at sun lounge

- (4) Drink holders at sun lounge
- Deck hatch into forward VIP
- Quick disconnect shore water inlet
- Textulene windshield cover (new 3/18)
- (2) stereo speakers

Side Decks

- Walk-around side decks minimized to increase interior spaces
- Non-skid fiberglass decking, newly painted
- Hinged FRP boarding gates, two port, two starboard
- Marquipt ladder brackets at each boarding gate
- Overhead 3 port and 3 starboard house side storage lockers for fenders
- (10) overhead lights – 5 port, 5 starboard
- Freshwater tank fill port and starboard
- Grey water discharge deck plate
- Black water discharge deck plate
- Engine room ventilation grills inboard of hull side
- (10) Low level courtesy lights – 5 port, 5 starboard
- Frameless house side windows
- Pantograph main deck entry doors, port and starboard
- International navigation lights
- Port side locker to hold dock lines
- Stainless steel hoop rails above raised FRB bullworks
- Dual spring line cleats
- Starboard side FRP locker to hold (8) step Marquipt Tide Ride Ladder
- Hull side fender tracks below rub rail, port and starboard

Aft Deck

- Teak over fiberglass decking
- Stainless steel handrails - port and starboard
- Stern cleats with hull side hawse holes
- Hinged stainless steel transom gates – port and starboard
- Bench seating aft with removable cushions and cover
- Varnished teak table with covers on two stainless steel pedestals
- (6) overhead lights with stainless steel trim
- (2) Raymarine CCTV cameras
- Newmar hailer speaker
- (9) teak over fiberglass steps to boat deck with a stainless steel handrail inboard
- (3) courtesy step lights at FB steps
- (2) Pioneer stereo speakers

- Alpine sub-woofer
- Quick disconnect fresh water outlet
- GFCI outlet
- Stereo control pad
- Trend 3 panel stainless steel entry door
- Track for off white Textulene aft sun shade behind bench seat

Swim Platform

- Freshly painted non-skid fiberglass swim platform
- (5) non-skid steps to aft deck – port and starboard
- Stainless steel handrails at steps
- (8) removable stainless steel hoop rails
- Stern flagstaff holder
- Hot and cold shower at starboard steps
- Spare sockets for corner hoop rail stowage
- Stern cleats on swim platform
- Stainless steel swim ladder under platform can be deployed from water
- Lazarette rudder and hydraulic steering ram access
- Under water light access in lazarette
- Trim tab system access in lazarette

Enclosed Bridge

- 174 square foot area
- Non-skid fiberglass sole covered with removable carpet
- Painted FRP overhead with (9) multicolor lights
- (3) Pompanette Platinum Series helm chairs with footrests and covers
- Electric sliding sunroof with V-Kool-70 sun/heat reflection film (new 12/18)
- Built-in cabinets port and starboard
- Port and starboard 3 panel hard glass bridge side windows (only 72 Hatteras built this way) with V-Kool-70 sun/heat reflection film (new 12/18)
- Port side curved seating aft of bar with removable cushions (new Dryfast foam and Sunbrella 2014) covers and storage below
- Starboard side curved seating with adjustable Absolute Black granite table, removable cushions (new Dryfast foam and Sunbrella 2014) , covers and storage below
- 5 low level courtesy lights
- (2) teak dining chairs with removable cushions and covers at dining table
- (3) panel clear vinyl aft enclosure (re-glassed 1/18)
- FB air conditioning upgraded as follows: 16,000 BTU port, 16,000 BTU stbd (new 7/19), two additional 10,000 BTU units added at original build - (1) 10k unit (new 6/17), (1) 10k unit (new 12/19)

- (4) Pioneer stereo speakers
- (2) JL subwoofers
- Lockable hinged entry door from galley area
- (3) Poseidon honeycomb light filtering shades on forward windshield (new 9/19)
- Weatherproof stereo remote control for main stereo system

Portside bar with:

- Absolute Black granite top
- Undermount stainless steel sink
- Whirlpool “clear ice” icemaker
- Glass front refrigerator behind FRP door
- (3) stainless steel bar stools with upholstered seats with covers
- Stainless steel foot rail at bar
- Storage cabinet
- Bar cover

Flybridge Helm

- Remote control “Yacht Controller” including windlass controls
- Centerline helm
- Stainless steel helm wheel
- 6” Ritchie PowerDamp compass
- (2) ICOM M-604 VHF’s with remote mics
- ABT Trac LCD stabilizer control
- (2) ACR URP-100 searchlight control pads
- (2) 19” GS195 Raymarine G-Series MFD (new 3/15)
- (2) Raymarine card readers (new 3/15)
- (2) Raymarine G-Series multi-function keyboard (new 3/15)
- Raymarine AIS 650 Class 13 transceiver (new 3/15)
- (2) Raymarine 4” LCD multi gauges, depth, speed, time, etc. (new 2016)
- Concord 24V to 12V DC converter (new 3/15)
- Simrad AP 28 Autopilot
- OceanView night vision camera and OceanView low light camera
- CAT back-up engine controls
- ABT hydraulic bow and stern thruster integrated control
- (3) windshield wipers/washers
- Sea Fire manual fire system release
- Engine start/stop controls
- (3) KEP 15” MFD screens for Hatteras systems monitor and up to 8 cameras and SAT TV
- Battery parallel switch
- Windlass control
- Trim tab control

- Engine room blower control
- Single lever CAT electronic engine controls
- Chart Flat to port of helm panel
- WXWAX weather info
- Fusion MS-UD750 AM/FM/SAT radio with Bluetooth
- Fusion MS-NRX200i stereo remote
- Helm cover
- Rigid Industries LED lighting control pad for boat name, mast lights and underwater lights
- USB charge port

Hardtop Equipment

- White powder coated dual Trumpet horns
- Hailer horn
- Steaming light
- Airmar weather sensor
- (2) 16' VHF antennas
- (2) ACR searchlights
- (4) GPS sensors
- Multi-color Ark lights face radar mast
- Raymarine 6' open 12kW array radar scanner
- Infrared camera
- (2) KVH domes, TV M7 and Tracphone V-7 Vsat

FRP mast with:

- Anchor light
- XM weather antenna
- XM SAT radio antenna
- Raymarine 4' 4kW open array radar scanner
- (2) GPS sensors
- (2) 4' Digital cell antennas for Cradlepoint system
- (3) signal flag halyards

Boat Deck

- 187 square foot area
- Fiberglass non-skid decking
- Stainless steel safety rail port and starboard
- Full hinged hatch cover over stairs with stainless steel safety rail
- 20" life ring with throw line
- ACR EPIRB
- Stbd side custom FRP cabinet with (2) Gaggeneau two burner grills, starboard side with

storage below

- Port side FRP cabinet with (2) A/C units
- 12" Ships bell
- Steelhead Marine telescoping SM1500/R 1500 lb. davit (new davit high pressure hoses 2016)
- Bench seat with removable cushions, cover and storage below and two lift up lockers either side
- (8) man Revere Lifteraft in canister, next inspection due 10/2021
- Custom tender chocks
- Removable 9 step ladder to FB hardtop
- Stainless steel deck drains

Tender

- 2015 15' Walker Bay Generation 450 RIB tender
- 75HP Evinrude E-TEC engine
- Bimini top
- Console cover
- Full boat cover with smile zipper
- Gauge package
- Raymarine plotter GPS depth E-Series 7"
- Fusion AM/FM/CD stereo with Bluetooth and helm remote
- VHF with mini antenna
- (2) Sea Blaze mini LED underwater lights
- LED courtesy lights
- Handrail at windshield
- Custom made stainless steel boarding ladder
- Lifting bridle

Crew Area

(7) freshly painted non-skid steps lead from the door behind the salon bar to the crew area. This area has Amtico flooring throughout.

At the base of the stairs is a chest freezer, two cabinet doors and two open storage shelves. Going aft is the crew head to starboard and the crew cabin to port. A separate Bosch Axxis washer and dryer is next aft followed by lift up stairs to the lazarette/rudder room and open style storage to starboard.

Captain's Cabin

A full lower double berth runs forward and aft on the outboard bulkhead. LED strip lights are in

the toe kick. A 19" Sharp Aquos TV faces the berth. A three door chest of drawers inboard forward with a auto lit cedar hanging locker aft.

Above the main berth is a single athwartship Pullman berth that folds out of the way when not in use. Also in this cabin is a Hatteras systems monitor alarm, a CO detector, a speaker volume control, (2) Boston Acoustics speakers, a smoke alarm and (4) LED lights overhead.

Crew Head

The bow front high gloss mahogany vanity has LED strip lights and one drawer below and a Corian counter top and sink above. A three shelf linen locker and two mirrored medicine cabinet doors are above the sink. The toilet is a Head Hunter model. The stall shower has a clear glass door, hand held or wall mounted fixture, a light and an exhaust fan. Also in the head are four halogen overhead mini spots and an A/C vent. The sole is Amtico teak.

Engine Room

- Fiberglass deck plates with carpet over
- (5) overhead fluorescent AC lights
- (5) overhead incandescent DC lights
- (3) Raymarine CCTV cameras
- Grey water holding tank, 185 gallons, pump and control panel
- ABT hydraulic bow and stern thruster- Model 250, 38 HP each
- ABT thruster reservoir and heat exchanger (with new cooling pump 2014)
- Trac stabilizer control panel
- ABT Trac #250 stabilizer actuator with new seal kits (6/19)
- ABT oversize 7.5 x sq. ft. fins with winglets for improved stabilization (new 6/19 \$12,500)
- (2) fuel transfer manifolds with fuel filters
- (2) H & C fresh water distribution manifolds
- Seaward 28 gallon water heater
- Clack water filter
- (2) Head Hunter Mach 5 water pumps, valves and switches for immediate swap
- Auto pilot pump
- (2) engine room blowers with thermostats
- Head Hunter grey water tank
- Galley sink discharge y-valve and grease trap
- Sea Fire 48.8 kg FM200 fire system
- (2) A/C raw water pumps
- (2) back-up A/C raw water pumps
- (2) GFCI outlets wired to underwater lights
- Oil change pump and manifold with quick disconnect fittings
- House air compressor with oil/water filters

- (2) Delta T ventilation fans (1 rebuilt 7/20)
- Sea Recovery Aquamatic 1800 GPD water maker with auto flush
- Dual Racor 1000 fuel filter to each engine
- Racor 500 fuel filter for each generator
- (2) frequency drives for Delta T systems
- PTO's of port and starboard transmissions
- Davit electronic/hydraulic pump
- (2) fuel transfer pumps
- Black water lift station
- High gloss urethane paint for ease of cleaning
- Fresh water fill hose for engines and generator
- (8) 24 volt bilge pumps - (2) 2000 GPH, (6) 3700 GPH
- (4) sealed shower sumps
- (2) 24 volt fuel priming pumps
- Discharge sea chests to eliminate multiple thru hulls above water line
- 220 volt A/C sewage pump with $\frac{3}{4}$ full display and alarm as part of systems monitor
- Engine room start/stop switches
- Custom storage shelves
- (4) step vertical Marquipt boarding ladder
- Airsep crankcase ventilation system
- Cruisair salon 36,000 BTU DX compressor (new 8/15)
- Cruisair galley 24,000 BTU DX compressor (new 5/15)
- Dockside water pressure regulator
- Engine coolant expansion bottles
- Generator coolant expansion bottles
- (5) drawer stainless steel tool box
- Sea Star hydraulic steering receiver with filter
- Whole boat taste and odor carbon filter
- (6) Multicolor Sea Vision underwater lights (new 10/13)
- Overhead stainless steel grab rail
- Key start, emergency shutoff and Hatteras hour meter for engines
- Vacuum gauge for main engine racors
- ZF 4: to 1 Model 2350 transmissions
- 4" stainless steel prop shafts
- Dripless shaft seals
- (8) blade 48" x 62.25" main props

Engine Maintenance

Besides bi-annual changes of zincs, impellers, etc. and other notable engine maintenance includes:

- Both engines new aftercoolers April 2020

- Port heat exchanger cleaned April 2020
- Stbd. Heat exchanger cleaned July 2020

Electrical

- 12/24 volt DC electrical system
- 120/240 volt AC 60HZ electrical system
- Onan 27.5 generator in sound shield – port 2648 hrs (7/20)
- Onan 27.5 generator in sound shield – stbd 2646 hrs (7/20)
- Mastervolt 24 volt 80 amp main battery charger (new 12/20)
- (4) 8D batteries (new 12/20)
- 24 volt DC ship service panel #1 in galley at with 20 protected circuits
- 24 volt DC ship service panel #2 in engine room with 16 protected circuits
- 120/240 AC panel #1 in galley with 17 breaker protected circuits
- 120/240 AC panel #2 in engine room with 12 breaker protected circuits
- 120/240 AC panel #3 in engine room with 15 breaker protected circuits
- 120/240 AC panel #4 in engine room with 14 breaker protected circuits
- 24 volt electronics panel on FB with 12 breaker protected circuits
- (4) Battery shut off switches
- (2) KVA Jefferson electric 25 shore power transformers
- Battery isolator

AC switching panel with:

- Source selector shore line 1 or generator 1
- Source selector shore line 2 or generator 2
- (2) digital Frequency meters
- (2) digital amp meters
- (2) digital volt meters
- (2) generator start stop panels
- Shore line indicator lights
- Source selector for source 1 or 2 for distribution panels 1-4 each with a digital amp meter
- (2) output voltage digital displays (after step up transformer) (new 9/18)

Voice and Digital Communication

PANACEA is set up to communicate with the outside world to a very high degree! Of course there is an “off” switch for all of the equipment below:

Guests need only to connect to the yachts internal Wi-Fi system with a simple password. There are multiple Cisco access points for seamless connectivity throughout the yacht. **PANACEA** has three methods of connecting to the internet:

1. WAVE Wi-Fi for shoreside connectivity to land based Wi-Fi systems
2. Cradlepoint near shore cell service via a Sim Card (USA, Bahamas, etc.)
3. KVH V-7 V-SAT satellite connectivity (Data download and upload plus voice) from anywhere else, even in the middle of the ocean.

The owner/Captain via an app simply selects which system to connect to and all on-board devices connected to the yacht's Wi-Fi are all simultaneously using the chosen connection method.

Construction Notes

- Actual LOA 73'4"
- Resin infused hull construction
- Upgraded 7.5 square foot stabilizer fins
- Painted with Alexseal Cloud White polyurethane and 2 step polished every 6 months.

Shows like new!

Comments

PANACEA is a very rare find. Owned by an experienced owner who knows and does what it takes to keep a boat in the top 5% condition of boats in this size and price range.

Her equipment list is the best of the best, her services are up to date and her condition speaks for itself.

Notable extras include:

75K communication (voice and data) system

¾ hard enclosed FB

(4) A/C units on FB for maximum cooling

Newer 15' RIB tender

100% ready to go now!

Walkthrough video available.

Smaller vessel trade-ins considered.

Exclusions

Owner's personal belongings.

Disclaimer

The Company offers the details of this vessel or yacht in good faith but cannot guarantee or warrant the accuracy of this information nor warrant the condition of the vessel. A buyer should instruct his representatives, agents, or his surveyors, to investigate such details as the buyer desires validated. This vessel or yacht is offered subject to prior sale, price change, or withdrawal without notice.

PHOTOS

Salon looking fwd



Salon looking to stbd



Salon bar



Salon aft port corner



Behind salon bar



Dining area



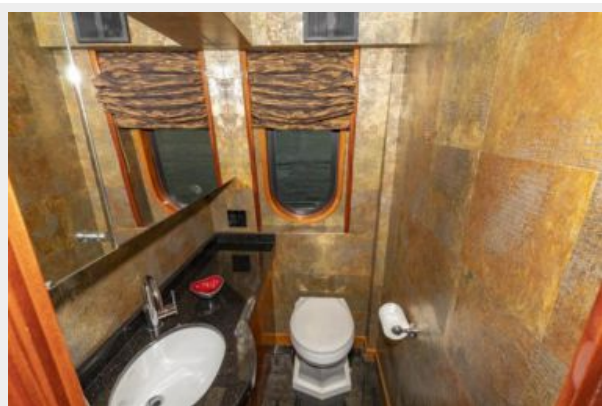
Dining Table



Salon looking aft



Day Head



Galley looking forward



Galley looking to port



Galley looking to stbd



Galley looking aft



Galley island



Galley dining and side deck door



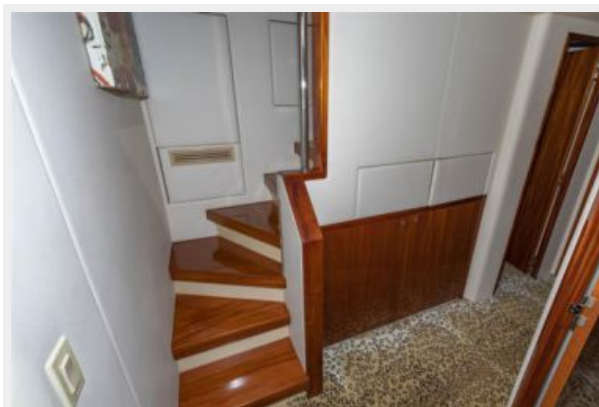
Galley dining



Port side deck door and steps to accommodations



Forward companionway



Forward laundry



Forward VIP



VIP Head



Guest head



Mid VIP



Mid VIP looking aft



Stbd guest cabin



Master looking aft



Master to port



Master to stbd



Master fwd to port



Master fwd to stbd



His head



His head



Shower



Her head



Her head



Bow



Bow seat



Windlass detail



Bow



Twin bow 100amp Glendennings



Stbd side Marquipt storage



Overhead fender storage



Aft deck



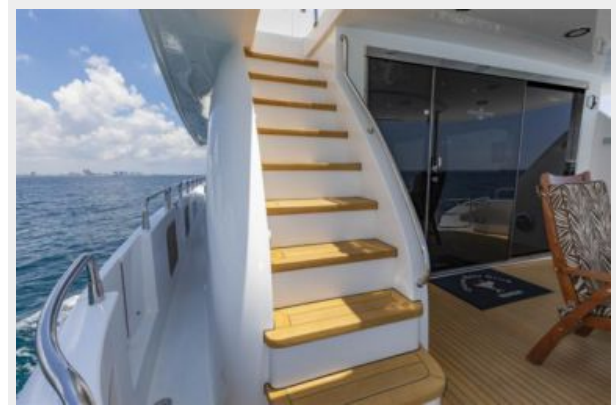
Aft deck



Cruising



Boat deck steps



Enclosed Flybridge



Hard side bridge windows



Flybridge bar



Flybridge dining to stbd



Flybridge seating to port



Flybridge looking aft



Helm looking to port



Helm looking to stbd



Helm



Boat deck seating



Boat deck seating



Boat deck looking fwd



2015 15' Walker Bay



15' RIB Bimini top



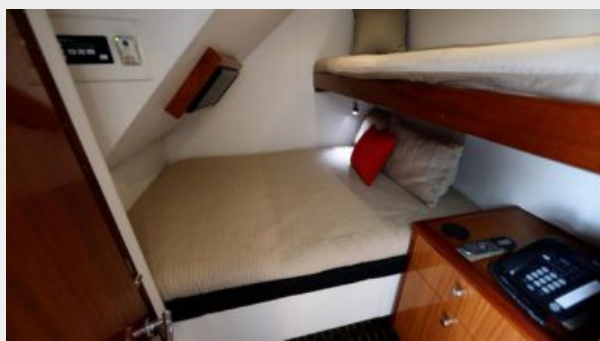
15' RIB console



15' RIB 75HP outboard



Crew cabin



Crew head



Crew laundry



Engine room looking fwd



Port engine



Stbd engine



Stbd generator



Forward aft stbd engine



Port generator



Forward of port engine



Engine room looking aft



360 view



360 view



360 view



360 view



360 view



360 view



360 view



360 view



360 view



360 view



360 view



360 view



Sunroof open 360 view



GA



CONTACTS

Andrey Shestakov, leading yacht broker of the sales department of Shestakov Yacht Sales Inc. Shestakov Yacht Sales Inc., the official representative of the Miami/Fort Lauderdale FL headquarters.

Contact details

Email: **andrey@shestakovyachtsales.com**

Web: shestakovyachtsales.com/en/

Telephones

USA: **+1(954)274-4435**

Office hours

Monday – Saturday: **9:00 - 21:00 EDT**

Sunday: **closed**

Address



Harbour Towne Marina, 850 NE 3rd St,
STE 213, Dania, FL 33004