

SAOIRSE — YOUNG SUN



Builder: YOUNG SUN

Year Built: 1985

Model: Cruising Sailboat

Price: PRICE ON APPLICATION

Location: United States

LOA: 35' 0" (10.67m)

Beam: 11' 0" (3.35m)

Max Draft: 5' 6" (1.68m)

Our experienced yacht broker, Andrey Shestakov, will help you choose and buy a yacht that best suits your needs **Saoirse — YOUNG SUN** from our catalogue. Presently, at Shestakov Yacht Sales Inc., we have a wide variety of yachts available on our sale's list. We also work in close contact with all the big yacht manufacturers from all over the world.

If you would like to buy a yacht **Saoirse — YOUNG SUN** or would like help answering any questions concerning purchasing, selling or chartering a yacht, please call **+1(954)274-4435**

TABLE OF CONTENTS

TABLE OF CONTENTS	2
SPECIFICATIONS	4
Overview	4
Basic Information	4
Dimensions	4
Speed, Capacities and Weight	4
Accommodations	4
Hull and Deck Information	5
Engine Information	5
DETAILED INFORMATION	6
Overview	6
Exclusions	7
Disclaimer	8
PHOTOS	9
1	9
2	9
3	9
4	9
5	9
6	9
7	10
8	10
9	10
10	10
11	10
12	10
13	11
14	11

15	11
16	11
17	12
18	12
19	12
20	12
22	13
21	13
23	13
24	13
25	14
26	14
28	14
27	14
29	15
30	15
31	15
32	15
33	16
CONTACTS	17
Contact details	17
Telephones	17
Office hours	17
Address	17

SPECIFICATIONS

Overview

This Robert Perry design was built for serious offshore cruising. Saoirse has always been kept on the Chesapeake Bay, Connecticut and eastern Long Island. Many consider her layout to be the perfect cruising layout, and is eminently suited for living aboard as well. There is an abundance of storage space for provisions and personal gear. Please check out the Full Specs and call for an appointment to see her.

Basic Information

Category: Cruising Sailboat

Model Year: 1985

Year Built: 1985

Country: United States

Dimensions

LOA: 35' 0" (10.67m)

LWL: 32' 0" (9.75m)

Beam: 11' 0" (3.35m)

Max Draft: 5' 6" (1.68m)

MFG Length: 35' 0" (10.67m)

Speed, Capacities and Weight

Displacement: 19200 Pounds

Water Capacity: 120 Gallons

Fuel Capacity: 60 Gallons

Accommodations

Total Cabins: 1

Total Heads: 1

Hull and Deck Information

Hull Material: Fiberglass

Engine Information

Engines: 1

Manufacturer: Yanmar

Model: 3QM30F

Engine Type: Inboard

Fuel Type: Diesel

DETAILED INFORMATION

Overview

Accommodations

6'4" headroom(2) opening hatches(9) opening ports w/screensJensen AM/FM/CD stereo w/speakersVarnished teak & holly soleDinette converts to double berth

Galley

Shipmate 2 burner propane stove w/ovenLarge icebox w/Adler-Barbour refrigerationDouble S/S sinks with H/C pressure waterExcellent storage for dry goods and galleyware

Electronics

ST4000 autopilotGarmin GPS/plotter at helmDatamarine knotmeter/logVHF radioFuruno radarlcom M600 SSBDatamarine depthfinderGuest EPIRB

Electrical

(3) BatteriesBattery selector switchAutomatic battery charger30 amp shore power connection25' shore power cord w/adapter

Hull & Deck

Simpson Lawrence manual windlass 20# Danforth w/100' chain & 300' rode Danforth 2nd anchor w/50' chain & 200' rode Pedestal wheel steering w/brake Emergency tiller Teak cockpit grating Boarding ladder Cockpit cushions Dodger Cockpit awning S/S Dorade vents Outboard motor lift Lifesling Fenders & docklines

Sails & Rigging

Full batten mainsail ('04 - little use) Lazy Jacks for mainsail Genoa (hardly used) Staysail Shaefer roller furling on headstay S/S wire standing rigging Barlow ST primary winches Manual backstay adjuster

Engine & Mechanical Equipment

30-HP Yanmar 3QM30F-no hour meter (1) electric bilge pump (1) manual bilge pump Emergency tiller

Disclaimer

The Company offers the details of this vessel in good faith but cannot guarantee or warrant the accuracy of this information nor warrant the condition of the vessel. A buyer should instruct his agents, or his surveyors, to investigate such details as the buyer desires validated. This vessel is offered subject to prior sale, price change, or withdrawal without notice.

Exclusions

Owner's personal belongings.

Disclaimer

The Company offers the details of this vessel or yacht in good faith but cannot guarantee or warrant the accuracy of this information nor warrant the condition of the vessel. A buyer should instruct his representatives, agents, or his surveyors, to investigate such details as the buyer desires validated. This vessel or yacht is offered subject to prior sale, price change, or withdrawal without notice.

PHOTOS

1



2



3



4



5



6



7



8



9



10



11



12



13



14



15



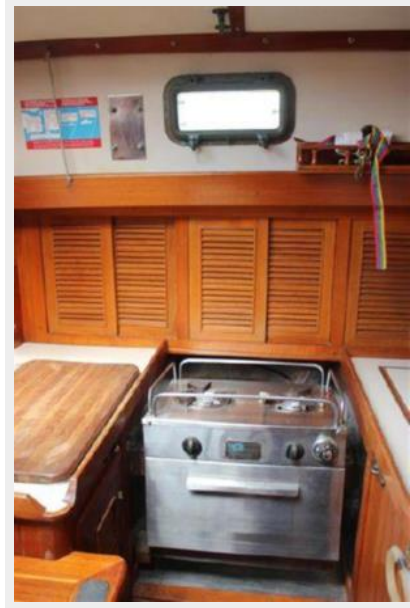
16



17



18



19



20



21



22



23



24



25



26



27



28



29



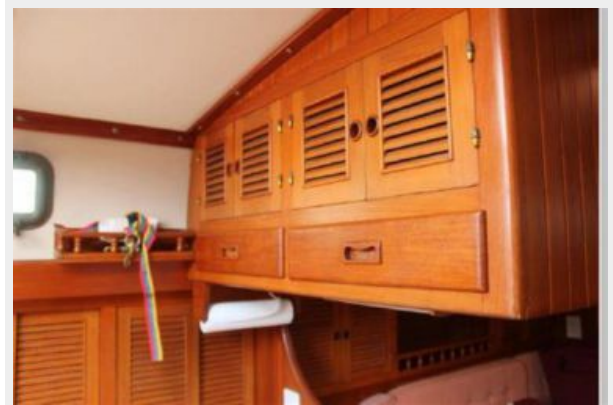
30



31



32



33



CONTACTS

Andrey Shestakov, leading yacht broker of the sales department of Shestakov Yacht Sales Inc. Shestakov Yacht Sales Inc., the official representative of the Miami/Fort Lauderdale FL headquarters.

Contact details

Email: andrey@shestakovyachtsales.com

Web: shestakovyachtsales.com/en/

Telephones

USA: +1(954)274-4435

Office hours

Monday – Saturday: **9:00 - 21:00** EDT

Sunday: **closed**

Address



Harbour Towne Marina, 850 NE 3rd St,
STE 213, Dania, FL 33004