

WESTY — WESTSAIL



Builder: WESTSAIL

Year Built: 1977

Model: Cruising Sailboat

Price: PRICE ON APPLICATION

Location: United States

LOA: 39' 11" (12.17m)

Beam: 11' 0" (3.35m)

Max Draft: 5' 0" (1.52m)

Our experienced yacht broker, Andrey Shestakov, will help you choose and buy a yacht that best suits your needs **WESTY — WESTSAIL** from our catalogue. Presently, at Shestakov Yacht Sales Inc., we have a wide variety of yachts available on our sale's list. We also work in close contact with all the big yacht manufacturers from all over the world.

If you would like to buy a yacht **WESTY — WESTSAIL** or would like help answering any questions concerning purchasing, selling or chartering a yacht, please call **+1(954)274-4435**

TABLE OF CONTENTS

TABLE OF CONTENTS	2
SPECIFICATIONS	4
Overview	4
Basic Information	4
Dimensions	4
Speed, Capacities and Weight	5
Accommodations	5
Hull and Deck Information	5
Engine Information	5
DETAILED INFORMATION	6
Overview	6
Exclusions	9
Disclaimer	9
PHOTOS	10
2	10
3	10
4	10
5	10
6	11
7	11
9	11
8	11
11	12
10	12
12	12
13	12
14	13
15	13

16	13
17	13
18	14
19	14
20	14
21	14
22	14
23	14
24	15
25	15
26	15
27	15
29	15
28	15
30	16
31	16
32	16
33	16
34	17
35	17
36	17
CONTACTS	18
Contact details	18
Telephones	18
Office hours	18
Address	18

SPECIFICATIONS

Overview

"The Westsail 32 had a tremendous impact on the cruising world, and on the boating industry. The most immediate impact, of course, was on the 800-plus owners of the boats built. With her massive no-nonsense construction, the Westsail largely delivered on the promise of a boat that could take its owners anywhere in the world, and surprisingly many boats have in fact been sailed to exotic locations, even if performance was a disappointment for many owners. The overwhelming majority of the boats are still fully seaworthy, and hold their resale value very well. "

Designed by William Crealock, Colin Archer, and William Atkin and built by Westsail Corporation between 1971 and 1981 the Westsail 32 is actually 39'11" LOA.

WESTY was finished by a master shipwright in Nova Scotia. She has been constantly maintained and upgraded a knowledgeable owner who is a USCG certified Captain for over 30 years and a certified diesel mechanic. She is fully equipped with a Cape Horn Wind Steering Vane, Autopilot and everything you need to take you anywhere in Safety and Comfort.

Basic Information

Category: Cruising Sailboat

Model Year: 1977

Year Built: 1977

Country: United States

Dimensions

LOA: 39' 11" (12.17m)

LWL: 27' 6" (8.38m)

Beam: 11' 0" (3.35m)

Max Draft: 5' 0" (1.52m)

MFG Length: 32' 0" (9.75m)

Speed, Capacities and Weight

Displacement: 19500 Pounds

Water Capacity: 32 Gallons

Holding Tank: 20 Gallons

Fuel Capacity: 35 Gallons

Accommodations

Total Cabins: 1

Total Heads: 1

Hull and Deck Information

Hull Material: Fiberglass

Engine Information

Engines: 1

Manufacturer: Beta

Model: 4 cylinder

Engine Type: Inboard

Fuel Type: Diesel

DETAILED INFORMATION

Overview

Sails and Rigging

Sails The main is reported as a Dacron sail battened with two reef points and leech line. The headsail is reported as 150% Dacron with a UV cover on a furling system. The staysail is reported as Dacron secured on the bow. Additional sails are reported as two spinnakers, a storm sail, storm jib and trysail. All of the sails are reported as in serviceable condition.

Standing rigging Single stainless steel 1x19 wire 9/32" upper and double lower shrouds. The forestay is a Harken MK IV furling system. Chain plates are stainless steel securely fastened to the hull sides. Back stay stainless steel 1x19 wire 9/32" securely mounted.

Running rigging All dacron low stretch rope.

Winches The primary winches are Anderson #46 self tailing two speed. Halyard winches are Anderson #12 standard. All in good condition and operating normally.

Electrical Systems

110 Volt AC System:

NFPA & ABYC standards.

Inlet: One 30A 125 volt receptacle.

Cords: One 50 foot 30A 125 volt.

Ground Fault Current Interrupter: One mounted at the distribution station.

Master breakers: One single pole magnetic breaker on the distribution panel.

Circuit Protection: Magnetic individual component breakers.

Battery Charger: Freedom 30 Inverter/charger

Inverter mounted in the engineroom.

Distribution panel. Mounted aft in the salon. Magnetic breakers. Labeled.

12 volt DC System:

Batteries: Four house batteries and one engine starting battery installed.

Distribution Panel: At the navigation station.

Circuit protection: Toggle switches with buss fuses and Individual component breakers all clearly labeled and operating.

Wiring: Stranded copper all labeled, color coded and securely fastened.

Terminals: Crimped

Insulation: Plastic jackets

Master breakers: One 4-position and one 2-position installed in the 12V system.

Electronics

VHF Radio: An ICOM model IC M422 is installed at the navigation station. Transmitting & receiving.

Depth Finder: A Raymarine model ST40 is mounted on the aft cabin bulkhead. Fit for intended service.

Autopilot: A manual autopilot is installed on the stern. Not tested. Reported as fit for intended service.

EPIRB A Satellite model 406 is aboard

GPS/Chart Plotter: A Standard Horizon GPS CP300 is installed at the navigation station. Fit for intended service.

Interior

Down into the cabin is a roomy salon with galley to port, navigation station across. Port and

starboard settees are forward of the galley with a pilot berth on the starboard side above the settee. There is a convertible dinette to port. The starboard settee has had wooden panels installed above the berth for storage. The enclosed head is forward of the settee on the port side. The forward cabin has a double berth.

The interior is constructed of teak and mahogany bulkheads, cabinetry and trim. Ventilation was through opening portholes, deck hatches, dorade vents, and companionway. The interior lighting was basically 12 volt. An egress hatch is fitted over the forward cabin berth.

Engine and Mechanical

2010 Beta Diesel Model 4 cylinder 38HP

Engine Mounting Beds Bolted to the main stringers. Flex type adjustable mounts.

Drive Train Coupling Rigid type: Keyed, locked & safety wired.

Stuffing box Flex type, drip less

Cooling System Through hull fitting with seacock and sea strainer.

Hoses: Wire inserted two ply rubber.

Clamps: Stainless steel bands.

Exhaust System Type: Water lift wet exhaust Muffler: Frp water lift

Hoses: Exhaust grade wire reinforced. Double clamped

Fuel Tanks :Two Stainless Steel tanks Total Capacity: Approx 64 gallons

Fuel Lines Shut Off location: Engine room.Hose type: USCG Approved

Filters: Standard canister and Racor water separator

2020 Upgrades

1/16/20	Haul: Sand and Paint hull and gunnels	Sand and Paint
bottom	Add new propeller zinc	1/22/20 Install New Sitex T760 Radar
Dome and Monitor	1/23/20 Install new TP32 Auto Pilot	1/25/20 Add 3 new AC
outlets/with USB plugs in main cabin	1/28/20 Install New NOCO Genius Gen3 Battery	
Charger	1/29/20 Install New Novopal TS 1000 Pure Sine Inverter	2/08/20 Install New
ProSafe FS-30 Galvonic Isolator	2/18/20 Install New Vespar SmartAIS	80002/20/20

Install New Perko Anchor Light2/22/20 Install New Five Oceans Marine Electric
Toilet2/25/20 Install Shower Sump Pump2/25/20 install New Potable Water
Lines3/07/20 Repair Taylor Heater Fuel Pump3/12/20 Install 4 New Lineline GPL-4CT
220 Ah Batteries3/16/20 Install New GPS Antenna and Garmin GPS 78 Series Handheld

Exclusions

Owner's personal belongings.

Disclaimer

The Company offers the details of this vessel or yacht in good faith but cannot guarantee or warrant the accuracy of this information nor warrant the condition of the vessel. A buyer should instruct his representatives, agents, or his surveyors, to investigate such details as the buyer desires validated. This vessel or yacht is offered subject to prior sale, price change, or withdrawal without notice.

PHOTOS

2



3



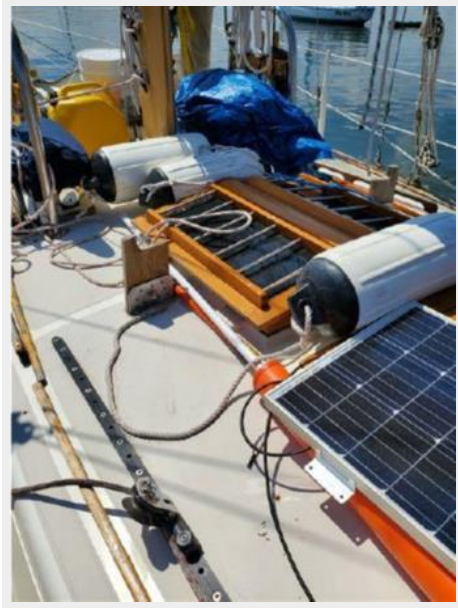
4



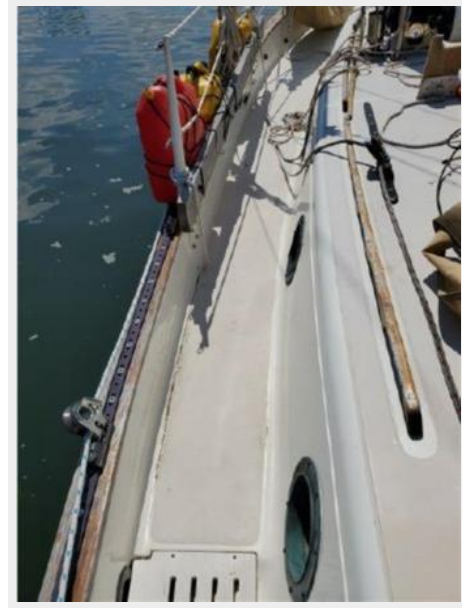
5



6



7



8



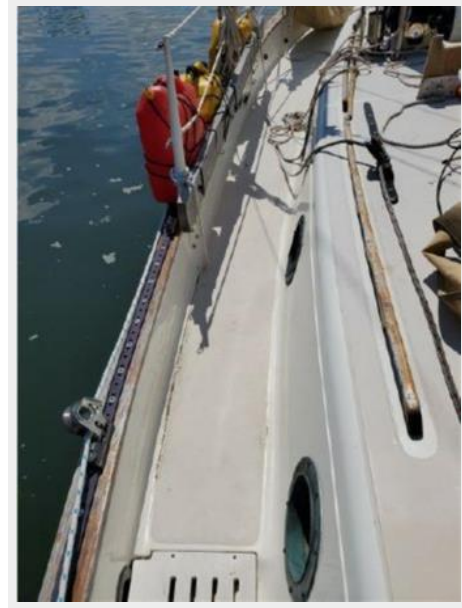
9



10



11



12



13



14



15



16



17



18



19



20



21



22



23



24



25



26



27



28



29



30



31



32



33



34



35



36



CONTACTS

Andrey Shestakov, leading yacht broker of the sales department of Shestakov Yacht Sales Inc. Shestakov Yacht Sales Inc., the official representative of the Miami/Fort Lauderdale FL headquarters.

Contact details

Email: andrey@shestakovyachtsales.com

Web: shestakovyachtsales.com/en/

Telephones

USA: +1(954)274-4435

Office hours

Monday – Saturday: **9:00 - 21:00** EDT

Sunday: **closed**

Address



Harbour Towne Marina, 850 NE 3rd St,
STE 213, Dania, FL 33004