

WESTY — WESTSAIL



Судостроитель: WESTSAIL

Год постройки: 1977

Модель: Крейсерская яхта

Цена: **ЦЕНА ЯХТЫ ПО ЗАПРОСУ**

Местонахождение: United States

Длина общая: 39' 11" (12.17m)

Ширина: 11' 0" (3.35m)

Макс. осадка: 5' 0" (1.52m)

Купить **WESTY — WESTSAIL** а также выбрать подходящую вам яхту из нашего **каталога яхт** вам поможет опытный яхтенный брокер Андрей Шестаков. На сегодняшний день компания **Shestakov Yacht Sales Inc.** имеет большое количество яхт в **собственном списке продаж**, а также тесно сотрудничает со всеми крупными яхтенными **производителями** по всему миру.

Для того чтобы купить яхту **WESTY — WESTSAIL** а также проконсультироваться по любому вопросу связанному с покупкой, продажей, чартером яхт позвоните по телефону **+7(918)465-66-44**.

ОГЛАВЛЕНИЕ

ОГЛАВЛЕНИЕ	2
ХАРАКТЕРИСТИКИ	4
Обзор	4
Основная информация	4
Размеры	4
Скорость, вместимость и масса	5
Размещение	5
Корпус и палуба	5
Информация о двигателе	5
ПОДРОБНОЕ ОПИСАНИЕ	6
Overview	6
Исключения	9
Отказ от ответственности	9
ФОТОГРАФИИ	10
2	10
3	10
4	10
5	10
6	11
7	11
9	11
8	11
11	12
10	12
12	12
13	12
14	13
15	13

16	13
17	13
18	14
19	14
20	14
21	14
22	14
23	14
24	15
25	15
26	15
27	15
29	15
28	15
30	16
31	16
32	16
33	16
34	17
35	17
36	17
КОНТАКТЫ	18
Контактная информация	18
Телефоны	18
Время работы	18
Адрес	18

ХАРАКТЕРИСТИКИ

Обзор

"The Westsail 32 had a tremendous impact on the cruising world, and on the boating industry. The most immediate impact, of course, was on the 800-plus owners of the boats built. With her massive no-nonsense construction, the Westsail largely delivered on the promise of a boat that could take its owners anywhere in the world, and surprisingly many boats have in fact been sailed to exotic locations, even if performance was a disappointment for many owners. The overwhelming majority of the boats are still fully seaworthy, and hold their resale value very well. "

Designed by William Crealock, Colin Archer, and William Atkin and built by Westsail Corporation between 1971 and 1981 the Westsail 32 is actually 39'11" LOA.

WESTY was finished by a master shipwright in Nova Scotia. She has been constantly maintained and upgraded a knowledgeable owner who is a USCG certified Captain for over 30 years and a certified diesel mechanic. She is fully equipped with a Cape Horn Wind Steering Vane, Autopilot and everything you need to take you anywhere in Safety and Comfort.

Основная информация

Тип судна: Крейсерская яхта

Модельный год: 1977

Год постройки: 1977

Страна: United States

Размеры

Длина общая: 39' 11" (12.17m)

Длина по ватерлинии: 27' 6" (8.38m)

Ширина: 11' 0" (3.35m)

Макс. осадка: 5' 0" (1.52m)

Длина привального бруса: 32' 0" (9.75m)

Скорость, вместимость и масса

Водоизмещение: 19500 Pounds

Вместимость воды: 32 Gallons

Вместимость сточного бака: 20 Gallons

Объем топливного бака: 35 Gallons

Размещение

Всего кают: 1

Всего ком. состава: 1

Корпус и палуба

Материал корпуса: Fiberglass

Информация о двигателе

Двигатели: 1

Производитель: Beta

Модель: 4 cylinder

Тип двигателя: Inboard

Тип топлива: Diesel

ПОДРОБНОЕ ОПИСАНИЕ

Overview

Sails and Rigging

Sails The main is reported as a Dacron sail battened with two reef points and leech line. The headsail is reported as 150% Dacron with a UV cover on a furling system. The staysail is reported as Dacron secured on the bow. Additional sails are reported as two spinnakers, a storm sail, storm jib and trysail. All of the sails are reported as in serviceable condition.

Standing rigging Single stainless steel 1x19 wire 9/32" upper and double lower shrouds. The forestay is a Harken MK IV furling system. Chain plates are stainless steel securely fastened to the hull sides. Back stay stainless steel 1x19 wire 9/32" securely mounted.

Running rigging All dacron low stretch rope.

Winches The primary winches are Anderson #46 self tailing two speed. Halyard winches are Anderson #12 standard. All in good condition and operating normally.

Electrical Systems

110 Volt AC System:

NFPA & ABYC standards.

Inlet: One 30A 125 volt receptacle.

Cords: One 50 foot 30A 125 volt.

Ground Fault Current Interrupter: One mounted at the distribution station.

Master breakers: One single pole magnetic breaker on the distribution panel.

Circuit Protection: Magnetic individual component breakers.

Battery Charger: Freedom 30 Inverter/charger

Inverter mounted in the engineroom.

Distribution panel. Mounted aft in the salon. Magnetic breakers. Labeled.

12 volt DC System:

Batteries: Four house batteries and one engine starting battery installed.

Distribution Panel: At the navigation station.

Circuit protection: Toggle switches with buss fuses and Individual component breakers all clearly labeled and operating.

Wiring: Stranded copper all labeled, color coded and securely fastened.

Terminals: Crimped

Insulation: Plastic jackets

Master breakers: One 4-position and one 2-position installed in the 12V system.

Electronics

VHF Radio: An ICOM model IC M422 is installed at the navigation station. Transmitting & receiving.

Depth Finder: A Raymarine model ST40 is mounted on the aft cabin bulkhead. Fit for intended service.

Autopilot: A manual autopilot is installed on the stern. Not tested. Reported as fit for intended service.

EPIRB A Satellite model 406 is aboard

GPS/Chart Plotter: A Standard Horizon GPS CP300 is installed at the navigation station. Fit for intended service.

Interior

Down into the cabin is a roomy salon with galley to port, navigation station across. Port and

starboard settees are forward of the galley with a pilot berth on the starboard side above the settee. There is a convertible dinette to port. The starboard settee has had wooden panels installed above the berth for storage. The enclosed head is forward of the settee on the port side. The forward cabin has a double berth.

The interior is constructed of teak and mahogany bulkheads, cabinetry and trim. Ventilation was through opening portholes, deck hatches, dorade vents, and companionway. The interior lighting was basically 12 volt. An egress hatch is fitted over the forward cabin berth.

Engine and Mechanical

2010 Beta Diesel Model 4 cylinder 38HP

Engine Mounting Beds Bolted to the main stringers. Flex type adjustable mounts.

Drive Train Coupling Rigid type: Keyed, locked & safety wired.

Stuffing box Flex type, drip less

Cooling System Through hull fitting with seacock and sea strainer.

Hoses: Wire inserted two ply rubber.

Clamps: Stainless steel bands.

Exhaust System Type: Water lift wet exhaust Muffler: Frp water lift

Hoses: Exhaust grade wire reinforced. Double clamped

Fuel Tanks :Two Stainless Steel tanks Total Capacity: Approx 64 gallons

Fuel Lines Shut Off location: Engine room.Hose type: USCG Approved

Filters: Standard canister and Racor water separator

2020 Upgrades

1/16/20	Haul: Sand and Paint hull and gunnels	Sand and Paint
bottom	Add new propeller zinc	1/22/20 Install New Sitex T760 Radar
Dome and Monitor	1/23/20 Install new TP32 Auto Pilot	1/25/20 Add 3 new AC
outlets/with USB plugs in main cabin	1/28/20 Install New NOCO Genius Gen3 Battery	
Charger	1/29/20 Install New Novopal TS 1000 Pure Sine Inverter	2/08/20 Install New
ProSafe FS-30 Galvonic Isolator	2/18/20 Install New Vespar SmartAIS	80002/20/20

Install New Perko Anchor Light 2/22/20 Install New Five Oceans Marine Electric
Toilet 2/25/20 Install Shower Sump Pump 2/25/20 install New Potable Water
Lines 3/07/20 Repair Taylor Heater Fuel Pump 3/12/20 Install 4 New Line Line GPL-4CT
220 Ah Batteries 3/16/20 Install New GPS Antenna and Garmin GPS 78 Series Handheld

Исключения

При продаже яхты исключаются личные вещи владельца.

Отказ от ответственности

Компания предоставляет описание судна или яхты добросовестно, но не может гарантировать точность этой информации, а также не ручается за техническое состояние. Покупатель должен проинструктировать своих агентов или оценщиков исследовать представленную информацию более подробно, по собственному желанию. Продажа судна или яхты, изменение цены или снятие с продажи будет происходить без предварительного уведомления.

ФОТОГРАФИИ

2



3



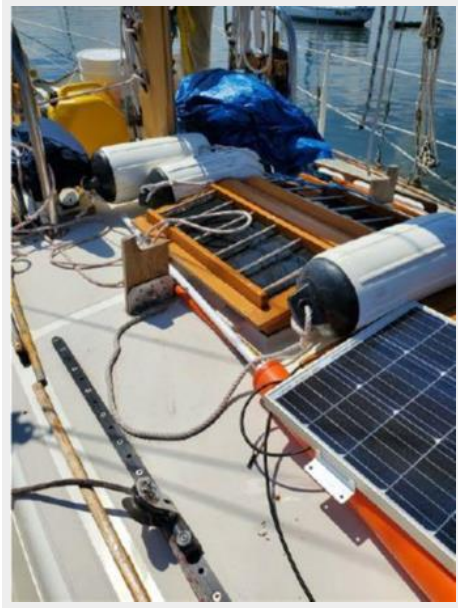
4



5



6



7



9



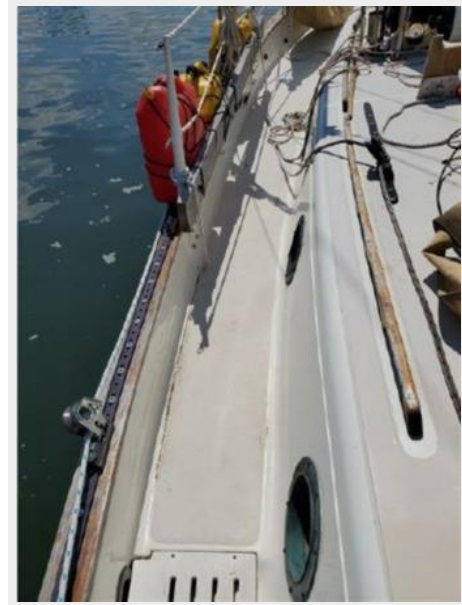
8



10



11



12



13



14



15



16



17



18



19



20



21



22



23



24



25



26



27



28



29



30



31



32



33



34



35



36



КОНТАКТЫ

Андрей Шестаков (Andrey Shestakov) – ведущий яхтенный брокер отдела продаж яхт и судов компании Shestakov Yacht Sales Inc. Официальный представитель Shestakov Yacht Sales Inc. для русскоговорящих клиентов в центральном офисе компании в Майами/Форт Лодердейл/Флорида/США.

Контактная информация

Email: andrey@shestakovyachtsales.com

Web: shestakovyachtsales.com

Телефоны

Краснодарский край: **+7(918)465-66-44**

США, Майами, Флорида: **+1(954)274-4435**

Время работы

Понедельник – Суббота: **9:00 - 21:00**
EDT

Воскресенье: **Закрето**

Адрес



Harbour Towne Marina, 850 NE 3rd St,
STE 213, Dania, FL 33004