

## KATIE BETH — MARINE TRADER



**Builder:** MARINE TRADER

**Year Built:** 1998

**Model:** Trawler Yacht

**Price:** PRICE ON APPLICATION

**Location:** United States

**LOA:** 38' 0" (11.58m)

**Beam:** 13' 1" (3.99m)

**Min Draft:** 4' 0" (1.22m)

**Max Draft:** 4' 0" (1.22m)

**Cruise Speed:** 6 Kts. (7 MPH)

Our experienced yacht broker, Andrey Shestakov, will help you choose and buy a yacht that best suits your needs **Katie Beth — MARINE TRADER** from our catalogue. Presently, at Shestakov Yacht Sales Inc., we have a wide variety of yachts available on our sale's list. We also work in close contact with all the big yacht manufacturers from all over the world.

If you would like to buy a yacht **Katie Beth — MARINE TRADER** or would like help answering any questions concerning purchasing, selling or chartering a yacht, please call **+1(954)274-4435**

# TABLE OF CONTENTS

TABLE OF CONTENTS	2
SPECIFICATIONS	7
Overview	7
Basic Information	7
Dimensions	7
Speed, Capacities and Weight	8
Accommodations	8
Hull and Deck Information	8
Engine Information	8
DETAILED INFORMATION	9
MAIN DESCRIPTION	9
38' Marine Trader Mechanical/Electrical	9
38' Marine Trader Hull & Deck	9
38' MARINE TRADER ELECTRONICS	10
38' MARINE TRADER SALON	10
38' MARINE TRADER GALLEY	10
38' Marine Trader Master Stateroom	10
38' Marine Trader Forward Stateroom & Head	11
38 Marine Trader Dinghy	11
DISCLAIMER	11
Exclusions	11
Disclaimer	11
PHOTOS	12
01	12
02	12
03	12
04	12
05	13

---

06	13
07	13
10	13
11	13
12	13
13	14
14	14
15	14
17	14
18	14
19	14
20	15
21	15
23	15
22	15
24	16
26	16
27	16
28	16
29	17
30	17
31	17
32	17
33	17
34	17
35	18
36	18
38	18
37	18

---

---

39	19
40	19
41	19
42	19
43	19
44	19
45	20
46	20
47	20
48	20
49	20
50	20
51	21
52	21
53	21
54	21
55	21
56	21
57	22
58	22
59	22
60	22
61	23
62	23
64	23
63	23
65	24
66	24
67	24

---

68	24
70	25
69	25
71	25
72	25
74	26
73	26
75	26
76	26
77	27
78	27
80	27
79	27
81	28
82	28
83	28
84	28
85	29
86	29
87	29
89	29
90	30
92	30
93	30
94	30
95	31
96	31
97	31
98	31

---

99	31
101	31
102	32
103	32
106	32
104	32
107	33
108	33
109	33
110	33
111	33
112	33
113	34
114	34
CONTACTS	35
Contact details	35
Telephones	35
Office hours	35
Address	35

---

# SPECIFICATIONS

---

## Overview

---

Katie Beth is a Great Loop veteran, with an easily lowering boom that gets her bridge clearance from 22 feet to 15 feet, and bow and stern thrusters for easy maneuverability. She is a 1998, believed to be the last hull of the model built on record, has been completely updated and is turnkey and ready to go. She is powered by a single 210HP Cummins diesel (approx 2830 hours) enabling the vessel to cruise comfortably at 7 mph burning about 1 ½ gallons per hour, and has a top speed of 10 MPH. Features include a recently serviced (2015) Northern Lights 8KW Luger Genset (1469 hours), Electric Windlass (2015), three A/C units (serviced - 3/2016), Upper & Lower Helm stations, an expansive fully enclosed flybridge with seating for up to 10 persons and a lower aft deck that offers even more seating topside. Her air conditioned interior features the beautifully carved teak accents the classic Taiwanese boat builders are famous for. Katie Beth has two staterooms and with two heads, one electric and one manual. The aft master stateroom has a centerline full queen size berth and LED reading lights. The galley is slightly down and has an upright Norcold refrigerator/freezer, a Magic Chef 3 burner propane stove plus a microwave, new kitchen faucet, and plenty of storage. The salon has a large convertible dinette table with seating for six and an L-shaped settee plus two comfortable arm chairs. Updates include: fiberglassed and awlgripped lower, aft, and fore decks, newer electronics including a Raymarine C-127 GPS/Chartplotter (bridge), Raymarine C-95 GPS/Chartplotter (lower helm station) and a Raymarine Auto-Pilot, EPIRB all new in 2014, fresh bottom paint (Nov 2016), flybridge bimini and enclosure new in 2020, and more.

## Basic Information

---

**Category:** Trawler Yacht

**Model Year:** 1998

**Year Built:** 1998

**Country:** United States

## Dimensions

---

**LOA:** 38' 0" (11.58m)

**Beam:** 13' 1" (3.99m)

**Min Draft:** 4' 0" (1.22m)

**Max Draft:** 4' 0" (1.22m)

**Clearance:** 15' 0" (4.57m)

---

## Speed, Capacities and Weight

---

**Cruise Speed:** 6 Kts. (7 MPH)

**Water Capacity:** 250 Gallons

**Holding Tank:** 40 Gallons

**Fuel Capacity:** 250 Gallons

---

## Accommodations

---

**Total Cabins:** 2

---

## Hull and Deck Information

---

**Hull Material:** Fiberglass

---

## Engine Information

---

**Engines:** 1

**Manufacturer:** Cummins

**Model:** 6BT 5.9 M

**Engine Type:** Inboard

**Fuel Type:** Diesel



## DETAILED INFORMATION

### MAIN DESCRIPTION

Katie Beth is a Great Loop veteran, with an easily lowering boom that gets her bridge clearance from 22 feet to 15 feet, and bow and stern thrusters for easy maneuverability. She is a 1998, believed to be the last hull of the model built on record, has been completely updated and is turnkey and ready to go. She is powered by a single 210HP Cummins diesel (approx 2830 hours) enabling the vessel to cruise comfortably at 7 mph burning about 1 ½ gallons per hour, and has a top speed of 10 MPH. Features include a recently serviced (2015) Northern Lights 8KW Luger Genset (1469 hours), Electric Windlass (2015), three A/C units (serviced - 3/2016), Upper & Lower Helm stations, an expansive fully enclosed flybridge with seating for up to 10 persons and a lower aft deck that offers even more seating topside. Her air conditioned interior features the beautifully carved teak accents the classic Taiwanese boat builders are famous for. Katie Beth has two staterooms and with two heads, one electric and one manual. The aft master stateroom has a centerline full queen size berth and LED reading lights. The galley is slightly down and has an upright Norcold refrigerator/freezer, a Magic Chef 3 burner propane stove plus a microwave, new kitchen faucet, and plenty of storage. The salon has a large convertible dinette table with seating for six and an L-shaped settee plus two comfortable arm chairs. Updates include: fiberglassed and awlgripped lower, aft, and fore decks, newer electronics including a Raymarine C-127 GPS/Chartplotter (bridge), Raymarine C-95 GPS/Chartplotter (lower helm station) and a Raymarine Auto-Pilot, EPIRB all new in 2014, fresh bottom paint (Nov 2016), flybridge bimini and enclosure new in 2020, and more.

### 38' Marine Trader Mechanical/Electrical

Cummins 210 hp 6bt 5.9m diesel (approx 2827 hrs.) Cruising RPM 1700 gets approx 7.2 mph and consumes approx 1.5 gal/hr  
 New alternator (3/2016)  
 New starter (3/2016)  
 ENTIRE boats electric system inspected & upgraded by a Certified Marine electrician.  
 Northern Lights Luger 8kw generator (just over 1469 hours)

New AGM battery for generator 2018  
 16,000 BTU A/C in saloon and 7,000 BTU in forward and aft cabins  
 AGM batteries: 2 4-D & 1 group 51  
 2 battery chargers, including one Zantrex w/remote control head (new 7/2017)  
 Blue Seas battery management system  
 1800 watt inverter (new 2017)  
 110v lighting  
 3 reverse cycle A/C units  
 Fresh water pump (3/2016)  
 2- 30 amp shore power cords with pigtail into 50 amp  
 Water heater (engine & electric)

### 38' Marine Trader Hull & Deck

Bow & stern thrusters rebuilt 2017

Fuel tanks replaced 11/2014 with aluminum, NO BLACK IRON

Bottom paint - 11/2016, including barrier coat New Lewmar windlass (2015)

65 lb Mantis main anchor & 225' all chain Secondary anchor – FX 16 Fortress on 50' chain plus rode

New bimini with enclosure, Feb 2020

Exterior teak brightwork refinished April 2020 Anchor salt water washdown system New LED lighting - (port/starboard/masthead ) Bimini top w/enclosed flybridge w/screens & vents Flybridge seating for up to 10 people Fiberglassed/awlgripped main and aft decks Bimini top aft deck Dingy davits Stern fresh water shower system Swim platform w/ ladder Fender racks (not installed, but included) Mast and boom (21'6" height tabernacle can be easily lowered to 16' 6" in cradle /15'6" on rail)

Prop tuned 2019

## 38' MARINE TRADER ELECTRONICS

Raymarine C-127 GPS/Chartplotter (Bridge) (2014) Raymarine C-95 GPS/Chartplotter (Lower Helm) (2014) Raymarine Auto-Pilot (2014) Standard Horizon VHF w/RAM Mic (2014) EPIRB (needs certification and battery) Visio 33" Flat Screen TV - Salon (2014) Raymarine RL 70c radar - flybridge Raymarine radar - upper and lower helm Windlass w/remote (upper & lower helm) AM/FM stereo Bow AND STERN thrusters (upper & lower helm) Compass lower helm Azimut digital compass – flybridge

## 38' MARINE TRADER SALON

Convertible settee has seating for six Adjustable table 12v lighting 110v outlets Opening windows w/screens Lower helm w/helm seat Storage cabinet Teak flooring

## 38' MARINE TRADER GALLEY

Upright Norcold refrigerator w/freezer powered by AC and DC Propane 3 burner stove w/oven Microwave Hot & cold pressure water, updated galley faucet 110v outlet 12v lighting Ample storage above and below counter with shelves and drawers

## 38' Marine Trader Master Stateroom

Centerline queen (standard sheet size) Private head with electric toilet (rebuilt 2017 including new hoses) Shower & tub Hot & cold pressure water, updated sink faucet 110 v outlet 12v LED lighting Hot & cold pressure water Vanity w/ stainless steel sink and mirror Storage under sink Opening windows w/screens Exit/entry door to aft deck Hanging locker Plenty of storage

---

w/drawers and shelves Teak flooring

## 38' Marine Trader Forward Stateroom & Head

---

Forward cabin sleeps two persons in a double berth Hanging locker 12v lighting Deck hatch Forward lavatory w/updated faucet Marine head, Jabsco assembly replaced 2019 Ample storage 110 v outlet Opening port holes

## 38 Marine Trader Dinghy

---

2015 West Marine VS

Lehr 2.5 hp propane engine

Dinghy davits

## DISCLAIMER

---

The Company offers the details of this vessel in good faith but cannot guarantee or warrant the accuracy of this information nor warrant the condition of the vessel. A buyer should instruct his agents, or his surveyors, to investigate such details as the buyer desires validated. This vessel is offered subject to prior sale, price change, or withdrawal without notice.

## Exclusions

---

Owner's personal belongings.

## Disclaimer

---

The Company offers the details of this vessel or yacht in good faith but cannot guarantee or warrant the accuracy of this information nor warrant the condition of the vessel. A buyer should instruct his representatives, agents, or his surveyors, to investigate such details as the buyer desires validated. This vessel or yacht is offered subject to prior sale, price change, or withdrawal without notice.

# PHOTOS

01



02



03



04



05



06



07



10



11



12



13



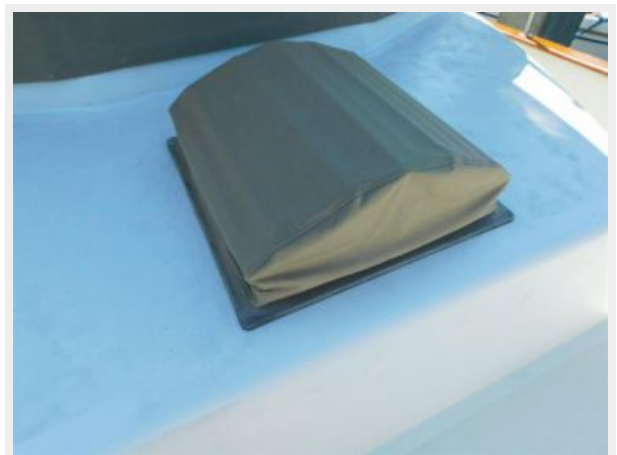
14



15



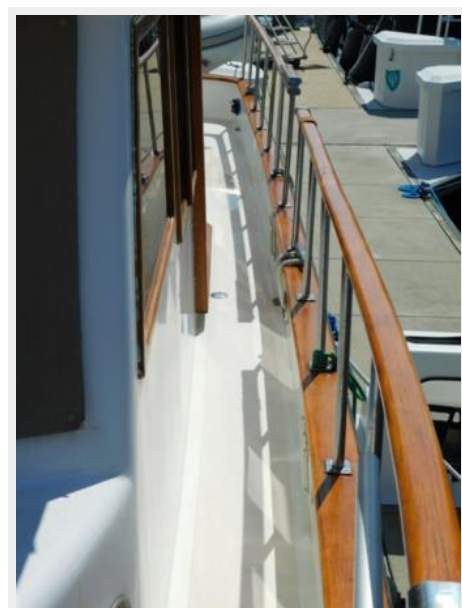
17



18



19



20



21



23



22



24



26



27



28





29



30



31



32



33



34



35



36



38



37



39



40



41



42



43



44



45



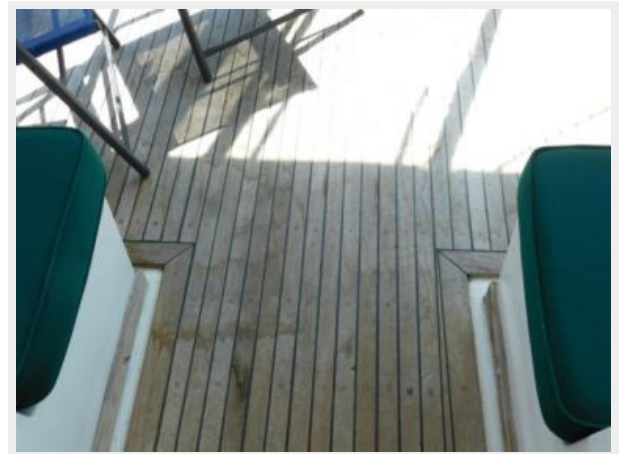
46



47



48



49



50



51



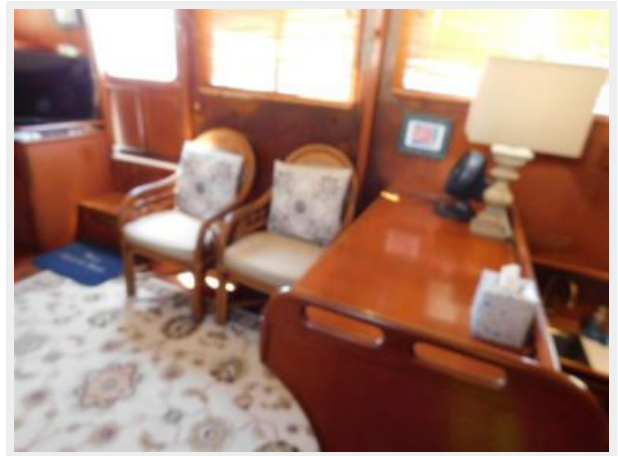
52



53



54



55



56



57



58



59



60



61



62



64



63



65



66



67



68





69



70



71



72



73



74



75



76



77



78



80



79



81



82



83



84



85



86



87



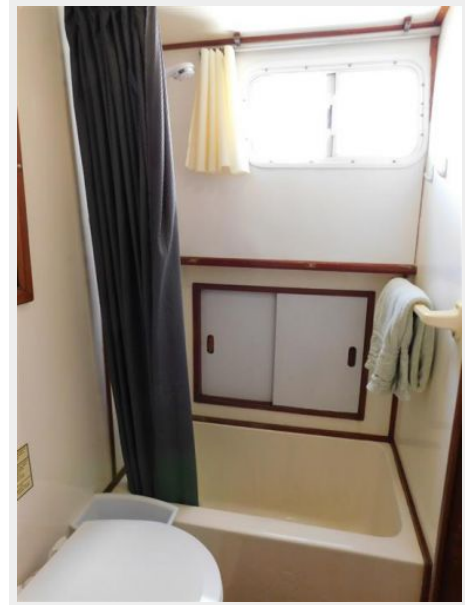
89



90



92



93



94



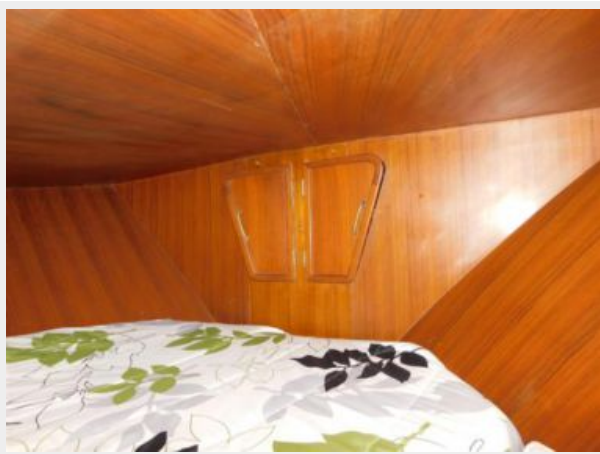
95



96



97



98



99



101



102



103



104



106

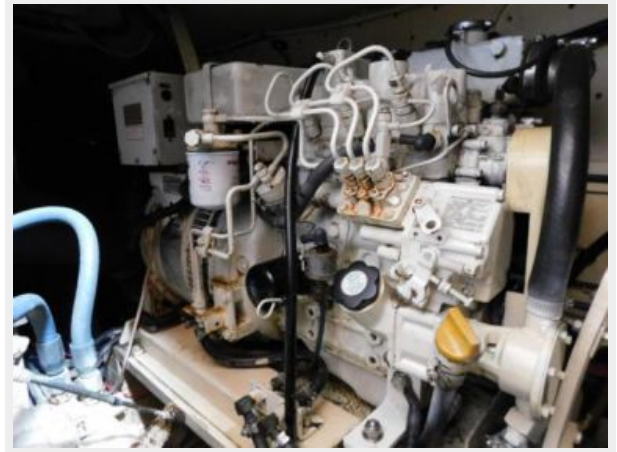




107



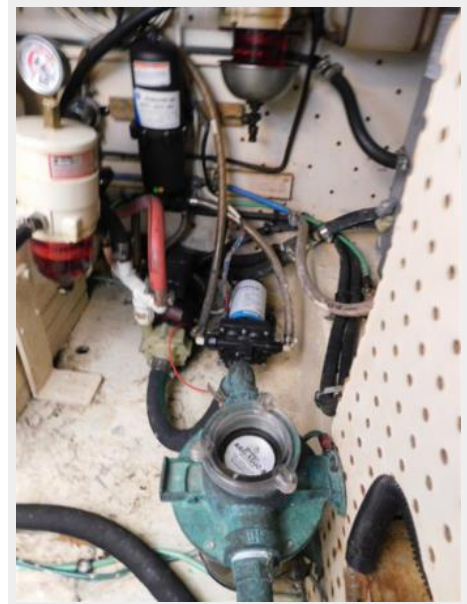
108



109



110



111



112



113



114



---

# CONTACTS

---

Andrey Shestakov, leading yacht broker of the sales department of Shestakov Yacht Sales Inc. Shestakov Yacht Sales Inc., the official representative of the Miami/Fort Lauderdale FL headquarters.

---

## Contact details

---

Email: [andrey@shestakovyachtsales.com](mailto:andrey@shestakovyachtsales.com)

Web: [shestakovyachtsales.com/en/](http://shestakovyachtsales.com/en/)

---

## Telephones

---

USA: +1(954)274-4435

---

## Office hours

---

Monday – Saturday: **9:00 - 21:00** EDT

Sunday: **closed**

---

## Address

---



Harbour Towne Marina, 850 NE 3rd St,  
STE 213, Dania, FL 33004