

## KATIE BETH — MARINE TRADER



**Судостроитель:** MARINE TRADER

**Год постройки:** 1998

**Модель:** Trawler Yacht

**Цена:** ЦЕНА ЯХТЫ ПО ЗАПРОСУ

**Местонахождение:** United States

**Длина общая:** 38' 0" (11.58m)

**Ширина:** 13' 1" (3.99m)

**Мин. осадка:** 4' 0" (1.22m)

**Макс. осадка:** 4' 0" (1.22m)

**Крейс. скорость:** 6 Kts. (7 MPH)

Купить **Katie Beth — MARINE TRADER** а также выбрать подходящую вам яхту из нашего каталога яхт вам поможет опытный яхтенный брокер Андрей Шестаков. На сегодняшний день компания **Shestakov Yacht Sales Inc.** имеет большое количество яхт в собственном списке продаж, а также тесно сотрудничает со всеми крупными яхтенными производителями по всему миру.

Для того чтобы купить яхту **Katie Beth — MARINE TRADER** а также проконсультироваться по любому вопросу связанному с покупкой, продажей, чартером яхт позвоните по телефону **+7(918)465-66-44**.

# ОГЛАВЛЕНИЕ

ОГЛАВЛЕНИЕ	2
ХАРАКТЕРИСТИКИ	7
Обзор	7
Основная информация	7
Размеры	7
Скорость, вместимость и масса	8
Размещение	8
Корпус и палуба	8
Информация о двигателе	8
ПОДРОБНОЕ ОПИСАНИЕ	9
MAIN DESCRIPTION	9
38' Marine Trader Mechanical/Electrical	9
38' Marine Trader Hull & Deck	9
38' MARINE TRADER ELECTRONICS	10
38' MARINE TRADER SALON	10
38' MARINE TRADER GALLEY	10
38' Marine Trader Master Stateroom	10
38' Marine Trader Forward Stateroom & Head	11
38 Marine Trader Dinghy	11
DISCLAIMER	11
Исключения	11
Отказ от ответственности	11
ФОТОГРАФИИ	12
01	12
02	12
03	12
04	12
05	13

06	13
07	13
10	13
11	13
12	13
13	14
14	14
15	14
17	14
18	14
19	14
20	15
21	15
23	15
22	15
24	16
26	16
27	16
28	16
29	17
30	17
31	17
32	17
33	17
34	17
35	18
36	18
38	18
37	18

---

39	19
40	19
41	19
42	19
43	19
44	19
45	20
46	20
47	20
48	20
49	20
50	20
51	21
52	21
53	21
54	21
55	21
56	21
57	22
58	22
59	22
60	22
61	23
62	23
64	23
63	23
65	24
66	24
67	24

---

68	24
70	25
69	25
71	25
72	25
74	26
73	26
75	26
76	26
77	27
78	27
80	27
79	27
81	28
82	28
83	28
84	28
85	29
86	29
87	29
89	29
90	30
92	30
93	30
94	30
95	31
96	31
97	31
98	31

---

---

99	31
101	31
102	32
103	32
106	32
104	32
107	33
108	33
109	33
110	33
111	33
112	33
113	34
114	34
<b>КОНТАКТЫ</b>	<b>35</b>
Контактная информация	35
Телефоны	35
Время работы	35
Адрес	35

# ХАРАКТЕРИСТИКИ

## Обзор

Katie Beth is a Great Loop veteran, with an easily lowering boom that gets her bridge clearance from 22 feet to 15 feet, and bow and stern thrusters for easy maneuverability. She is a 1998, believed to be the last hull of the model built on record, has been completely updated and is turnkey and ready to go. She is powered by a single 210HP Cummins diesel (approx 2830 hours) enabling the vessel to cruise comfortably at 7 mph burning about 1 ½ gallons per hour, and has a top speed of 10 MPH. Features include a recently serviced (2015) Northern Lights 8KW Luger Genset (1469 hours), Electric Windlass (2015), three A/C units (serviced - 3/2016), Upper & Lower Helm stations, an expansive fully enclosed flybridge with seating for up to 10 persons and a lower aft deck that offers even more seating topside. Her air conditioned interior features the beautifully carved teak accents the classic Taiwanese boat builders are famous for. Katie Beth has two staterooms and with two heads, one electric and one manual. The aft master stateroom has a centerline full queen size berth and LED reading lights. The galley is slightly down and has an upright Norcold refrigerator/freezer, a Magic Chef 3 burner propane stove plus a microwave, new kitchen faucet, and plenty of storage. The salon has a large convertible dinette table with seating for six and an L-shaped settee plus two comfortable arm chairs. Updates include: fiberglassed and awlgripped lower, aft, and fore decks, newer electronics including a Raymarine C-127 GPS/Chartplotter (bridge), Raymarine C-95 GPS/Chartplotter (lower helm station) and a Raymarine Auto-Pilot, EPIRB all new in 2014, fresh bottom paint (Nov 2016), flybridge bimini and enclosure new in 2020, and more.

## Основная информация

**Тип судна:** Trawler Yacht

**Модельный год:** 1998

**Год постройки:** 1998

**Страна:** United States

## Размеры

**Длина общая:** 38' 0" (11.58m)

**Ширина:** 13' 1" (3.99m)

**Мин. осадка:** 4' 0" (1.22m)

**Макс. осадка:** 4' 0" (1.22m)

**Трапы:** 15' 0" (4.57m)

---

## Скорость, вместимость и масса

---

**Крейс. скорость:** 6 Kts. (7 MPH)

**Вместимость воды:** 250 Gallons

**Вместимость сточного бака:** 40 Gallons

**Объем топливного бака:** 250 Gallons

---

## Размещение

---

**Всего кают:** 2

---

## Корпус и палуба

---

**Материал корпуса:** Fiberglass

---

## Информация о двигателе

---

**Двигатели:** 1

**Производитель:** Cummins

**Модель:** 6BT 5.9 M

**Тип двигателя:** Inboard

**Тип топлива:** Diesel



---

# ПОДРОБНОЕ ОПИСАНИЕ

---

## MAIN DESCRIPTION

---

Katie Beth is a Great Loop veteran, with an easily lowering boom that gets her bridge clearance from 22 feet to 15 feet, and bow and stern thrusters for easy maneuverability. She is a 1998, believed to be the last hull of the model built on record, has been completely updated and is turnkey and ready to go. She is powered by a single 210HP Cummins diesel (approx 2830 hours) enabling the vessel to cruise comfortably at 7 mph burning about 1 ½ gallons per hour, and has a top speed of 10 MPH. Features include a recently serviced (2015) Northern Lights 8KW Luger Genset (1469 hours), Electric Windlass (2015), three A/C units (serviced - 3/2016), Upper & Lower Helm stations, an expansive fully enclosed flybridge with seating for up to 10 persons and a lower aft deck that offers even more seating topside. Her air conditioned interior features the beautifully carved teak accents the classic Taiwanese boat builders are famous for. Katie Beth has two staterooms and with two heads, one electric and one manual. The aft master stateroom has a centerline full queen size berth and LED reading lights. The galley is slightly down and has an upright Norcold refrigerator/freezer, a Magic Chef 3 burner propane stove plus a microwave, new kitchen faucet, and plenty of storage. The salon has a large convertible dinette table with seating for six and an L-shaped settee plus two comfortable arm chairs. Updates include: fiberglassed and awlgripped lower, aft, and fore decks, newer electronics including a Raymarine C-127 GPS/Chartplotter (bridge), Raymarine C-95 GPS/Chartplotter (lower helm station) and a Raymarine Auto-Pilot, EPIRB all new in 2014, fresh bottom paint (Nov 2016), flybridge bimini and enclosure new in 2020, and more.

---

## 38' Marine Trader Mechanical/Electrical

---

Cummins 210 hp 6bt 5.9m diesel (approx 2827 hrs.) Cruising RPM 1700 gets approx 7.2 mph and consumes approx 1.5 gal/hr  
New alternator (3/2016)  
New starter (3/2016)  
ENTIRE boats electric system inspected & upgraded by a Certified Marine electrician.  
Northern Lights Luger 8kw generator (just over 1469 hours)

New AGM battery for generator 2018  
16,000 BTU A/C in saloon and 7,000 BTU in forward and aft cabins  
AGM batteries: 2 4-D & 1 group 51  
2 battery chargers, including one Zantrex w/remote control head (new 7/2017)  
Blue Seas battery management system  
1800 watt inverter (new 2017)  
110v lighting  
3 reverse cycle A/C units  
Fresh water pump (3/2016)  
2- 30 amp shore power cords with pigtail into 50 amp  
Water heater (engine & electric)

---

## 38' Marine Trader Hull & Deck

---

Bow & stern thrusters rebuilt 2017

Fuel tanks replaced 11/2014 with aluminum, NO BLACK IRON

Bottom paint - 11/2016, including barrier coat New Lewmar windlass (2015)

65 lb Mantis main anchor & 225' all chain Secondary anchor – FX 16 Fortress on 50' chain plus rode

New bimini with enclosure, Feb 2020

Exterior teak brightwork refinished April 2020 Anchor salt water washdown system New LED lighting - (port/starboard/masthead ) Bimini top w/enclosed flybridge w/screens & vents Flybridge seating for up to 10 people Fiberglassed/awlgripped main and aft decks Bimini top aft deck Dingy davits Stern fresh water shower system Swim platform w/ ladder Fender racks (not installed, but included) Mast and boom (21'6" height tabernacle can be easily lowered to 16' 6" in cradle /15'6" on rail)

Prop tuned 2019

## 38' MARINE TRADER ELECTRONICS

Raymarine C-127 GPS/Chartplotter (Bridge) (2014) Raymarine C-95 GPS/Chartplotter (Lower Helm) (2014) Raymarine Auto-Pilot (2014) Standard Horizon VHF w/RAM Mic (2014) EPIRB (needs certification and battery) Visio 33" Flat Screen TV - Salon (2014) Raymarine RL 70c radar - flybridge Raymarine radar - upper and lower helm Windlass w/remote (upper & lower helm) AM/FM stereo Bow AND STERN thrusters (upper & lower helm) Compass lower helm Azimut digital compass – flybridge

## 38' MARINE TRADER SALON

Convertible settee has seating for six Adjustable table 12v lighting 110v outlets Opening windows w/screens Lower helm w/helm seat Storage cabinet Teak flooring

## 38' MARINE TRADER GALLEY

Upright Norcold refrigerator w/freezer powered by AC and DC Propane 3 burner stove w/oven Microwave Hot & cold pressure water, updated galley faucet 110v outlet 12v lighting Ample storage above and below counter with shelves and drawers

## 38' Marine Trader Master Stateroom

Centerline queen (standard sheet size) Private head with electric toilet (rebuilt 2017 including new hoses) Shower & tub Hot & cold pressure water, updated sink faucet 110 v outlet 12v LED lighting Hot & cold pressure water Vanity w/ stainless steel sink and mirror Storage under sink Opening windows w/screens Exit/entry door to aft deck Hanging locker Plenty of storage

---

w/drawers and shelvesTeak flooring

## 38' Marine Trader Forward Stateroom & Head

---

Forward cabin sleeps two persons in a double berthHanging locker12v lightingDeck hatchForward lavatory w/updated faucetMarine head, Jabsco assembly replaced 2019Ample storage 110 v outletOpening port holes

## 38 Marine Trader Dinghy

---

2015 West Marine VS

Lehr 2.5 hp propane engine

Dinghy davits

## DISCLAIMER

---

The Company offers the details of this vessel in good faith but cannot guarantee or warrant the accuracy of this information nor warrant the condition of the vessel. A buyer should instruct his agents, or his surveyors, to investigate such details as the buyer desires validated. This vessel is offered subject to prior sale, price change, or withdrawal without notice.

## Исключения

---

При продаже яхты исключаются личные вещи владельца.

## Отказ от ответственности

---

Компания предоставляет описание судна или яхты добросовестно, но не может гарантировать точность этой информации, а также не ручается за техническое состояние. Покупатель должен проинструктировать своих агентов или оценщиков исследовать представленную информацию более подробно, по собственному желанию. Продажа судна или яхты, изменение цены или снятие с продажи будет происходить без предварительного уведомления.

# ФОТОГРАФИИ

01



02



03



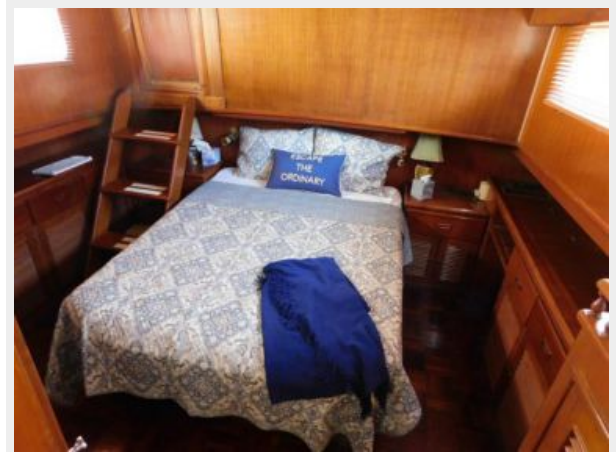
04



05



06



07



10



11



12





13



14



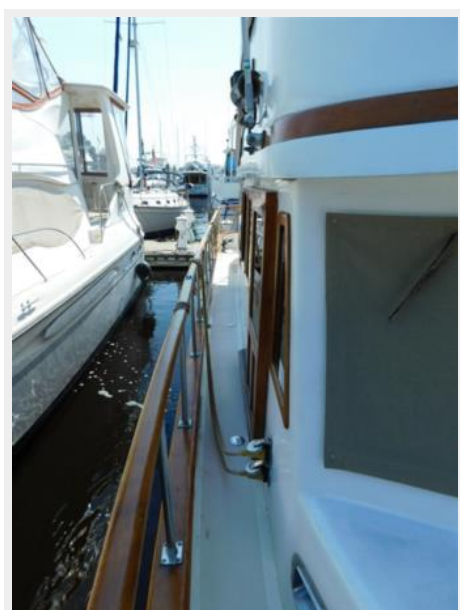
15



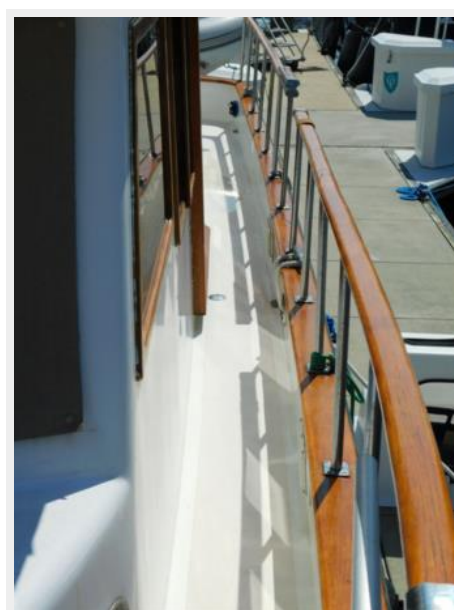
17



18



19



20



21



23



22





24



26



27



28





29



30



31



32



33



34



35



36



37



38





39



40



41



42



43



44



45



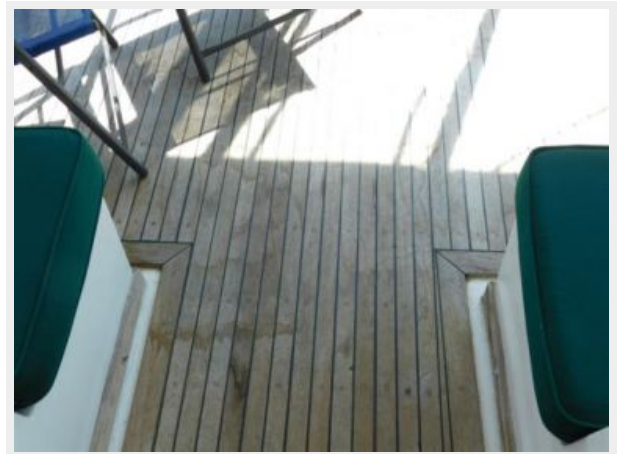
46



47



48



49



50





51



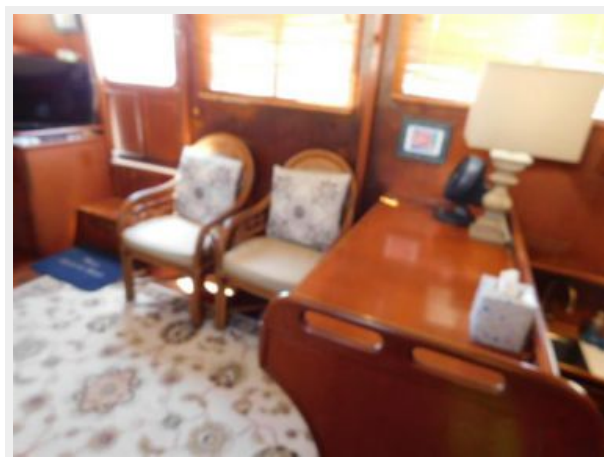
52



53



54



55



56



57



58



59



60





61



62



64



63



65



66



67



68





69



70



71



72



73



74



75



76



77



78



79



80





81



82



83



84



85



86



87



89



90



92



93



94





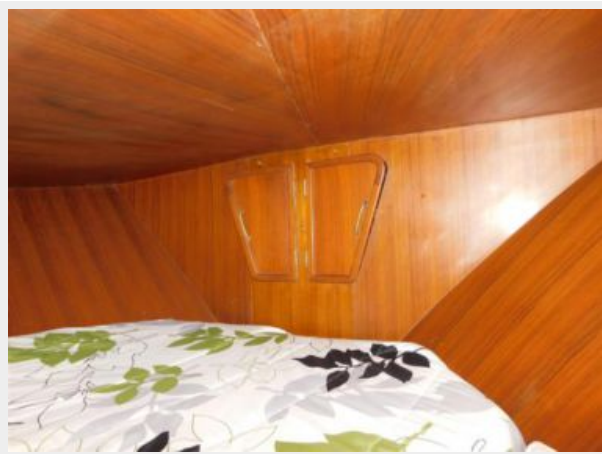
95



96



97



98



99



101



102



103



104



106





107



108



109



110



111



112



113



114



# КОНТАКТЫ

---

Андрей Шестаков (Andrey Shestakov) – ведущий яхтенный брокер отдела продаж яхт и судов компании Shestakov Yacht Sales Inc. Официальный представитель Shestakov Yacht Sales Inc. для русскоговорящих клиентов в центральном офисе компании в Майами/Форт Лодердейл/Флорида/США.

## Контактная информация

---

Email: [andrey@shestakovyachtsales.com](mailto:andrey@shestakovyachtsales.com)

Web: [shestakovyachtsales.com](http://shestakovyachtsales.com)

## Телефоны

---

Краснодарский край: **+7(918)465-66-44**

США, Майами, Флорида: **+1(954)274-4435**

## Время работы

---

Понедельник – Суббота: **9:00 - 21:00**  
EDT

Воскресенье: **Закрето**

## Адрес

---



Harbour Towne Marina, 850 NE 3rd St,  
STE 213, Dania, FL 33004