

CAL 33



Год постройки: 1986

Модель: Крейсерская яхта

Цена: ЦЕНА ЯХТЫ ПО ЗАПРОСУ

Длина общая: 33' (10.06m)

Ширина: 11.33

Макс. осадка: 4' 10" (1.47m)

Купить Cal 33 — н/д а также выбрать подходящую вам яхту из нашего каталога яхт вам поможет опытный яхтенный брокер Андрей Шестаков. На сегодняшний день компания Shestakov Yacht Sales Inc. имеет большое количество яхт в собственном списке продаж, а также тесно сотрудничает со всеми крупными яхтенными производителями по всему миру.

Для того чтобы купить яхту Cal 33 — н/д а также проконсультироваться по любому вопросу связанному с покупкой, продажей, чартером яхт позвоните по телефону **+7(918)465-66-44**.

ОГЛАВЛЕНИЕ

ОГЛАВЛЕНИЕ	2
ХАРАКТЕРИСТИКИ	5
Обзор	5
Основная информация	5
Размеры	5
Размещение	5
Корпус и палуба	5
Информация о двигателе	6
ФОТОГРАФИИ	7
P6081403	7
P6081404	7
P6081405	7
P6081400	7
P6081402	7
P6081401	7
P6081336	8
P6081335	8
P6081337	8
P6081339	8
P6081340	8
P6081341	8
P6081326	8
P6081328	8
P6081329	9
P6081323	9
P6081343	9
P6081344	9
P6081325	9

P6081334	9
P6081345	9
P6081346	9
P6081347	10
P6081349	10
P6081351	10
P6081352	10
P6081353	10
P6081354	10
P6081355	10
P6081356	10
P6081360	11
P6081361	11
P6081362	11
P6081363	11
P6081364	11
P6081365	11
P6081369	11
P6081370	11
P6081371	12
P6081372	12
P6081373	12
P6081375	12
P6081377	12
P6081376	12
P6081378	13
P6081379	13
P6081380	13
P6081381	13

P6081382	13
P6081383	13
P6081384	13
P6081385	13
P6081386	14
P6081387	14
P6081388	14
P6081389	14
P6081390	14
P6081391	14
P6081392	15
P6081393	15
P6081394	15
P6081395	15
P6081396	15
P6081397	15
P6081399	15
P6081317	15
P6081315	16
P6081318	16
P6081319	16
КОНТАКТЫ	17
Контактная информация	17
Телефоны	17
Время работы	17
Адрес	17

ХАРАКТЕРИСТИКИ

Обзор

Super clean, Well Kept, and Priced to sell in excellent condition!

- AC/Heat system
- Refrigerator
- Sails in Excellent shape
- Teak and Holly flooring
- Only 480 Engine Hours
- Newer Canvas Covers
- Bimini Top and Dodger Frame included
- Call for more information on this nice Sailboat!

Основная информация

Тип судна: Крейсерская яхта

Подкатегория: Шхуна

Модельный год: 1986

Год постройки: 1986

Размеры

Длина общая: 33' (10.06mm)

Ширина: 11.33

Макс. осадка: 4' 10" (1.47mm)

Размещение

Всего кают: 2

Спальные места: 6

Всего ком. состава: 1

Корпус и палуба

Материал корпуса: Fiberglass

Материал палубы: Fiberglass

Информация о двигателе

Двигатели: 1

Производитель: Yanmar

Тип двигателя: Inboard

Тип топлива: Diesel

ФОТОГРАФИИ

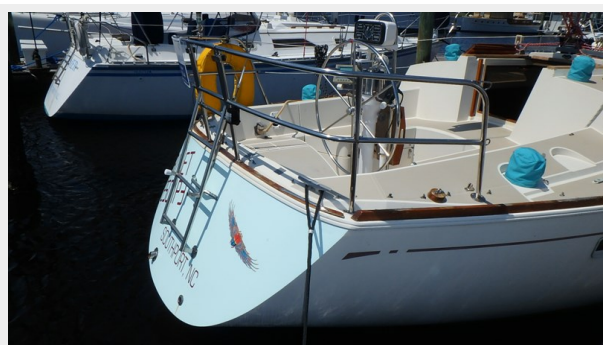
P6081403



P6081404



P6081405



P6081400



P6081402



P6081401



P6081336



P6081335



P6081337



P6081339



P6081340



P6081341



P6081326



P6081328



P6081329



P6081323



P6081343



P6081344



P6081325



P6081334



P6081345



P6081346



P6081347



P6081349



P6081351



P6081352



P6081353



P6081354



P6081355



P6081356



P6081360



P6081361



P6081362



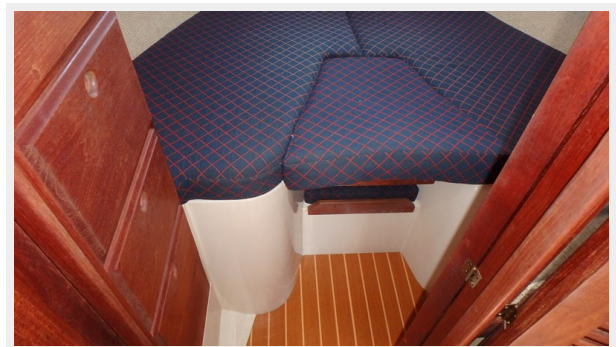
P6081363



P6081364



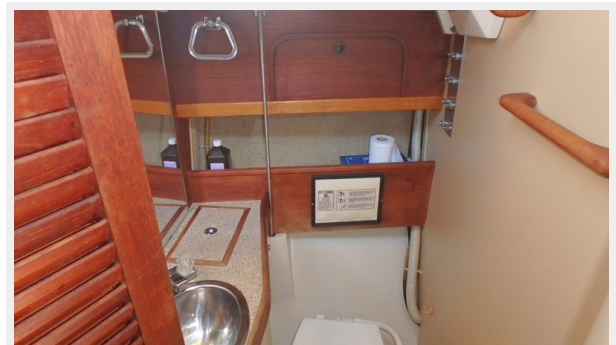
P6081365



P6081369



P6081370



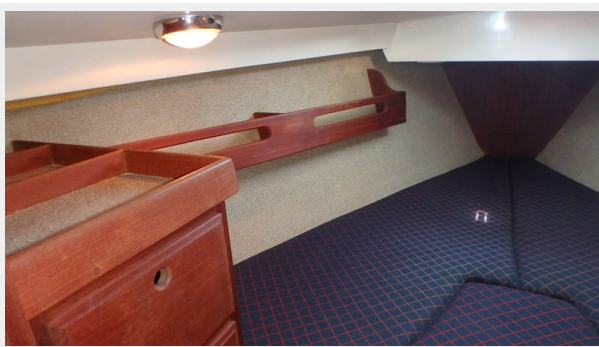
P6081371



P6081372



P6081373



P6081375



P6081376



P6081377

<p>"The best CAL to date!" — Roger Marshall, Naval Architect writing in Motor Boating & Sailing</p> <p>"If you were seeking a modern speed loader, it is doubtful that you would design things differently than did Peter Boyce of C. Raymond Hunt Associates." — Robby Robinson, experienced cruiser and racer, analyst in SAIL magazine</p> <p>"We feel that the introduction of the all new CAL 33 is the single most important step in the last five years of CAL's twenty-six year history." — Jim Hunt, experienced racer and cruiser, President of Lear Siegler Marine</p>	<p>THE ACCOMMODATION: The CAL 33 has a wide-open feeling below because its two double berths are located at the ends of the boat creating an unusually airy and spacious feeling in this size boat. By positioning the auxiliary engine beneath the companionway hatch, we were able to create a very large double quarter berth. The berth is open to the main salon and galley, but a sliding curtain provides darkness and privacy while opening ports in the hull and cockpit allow air to circulate.</p> <p>Forward is a double cabin intended for the owner's party. In addition to the large set berth with plenty of foot and shoulder room, there are also drawers, shelves and lockers in their cabin.</p>	
<p>"As the designer who had this boat in his mind before I was on paper, I'm very pleased with the builder's execution." — Peter Boyce, yacht designer, C. Raymond Hunt Associates, Boston</p> <p>CAL 33 The CAL 33 is a unique blend of performance and civilized creature comfort in an attractive package that will look at home on any water. It will satisfy owners and guests with its very functional and innovative layout. It will please the mechanic with its quality finish, and, it will thrill the sailor seeking performance in a fully-appointed yacht.</p>	<p>berth. This is an unusually large forward cabin, we felt that the owners would appreciate the seclusion and convenience of a cabin away from the companionway, raw station and galley, as well as having a head and lockers in their cabin.</p> <p>To starboard of the passageway leading from the salon to the owner's cabin is the head. Functional, bright, well ventilated and with ample storage. Finished in easy-to-clean laminates with teak trim. Opposite is more hanging locker space.</p> <p>The central part of the boat is the dining area, galley, and navigation/entertainment center. It is here that you will see the careful attention to detail the CAL woodworkers have put into the creation of an outstanding interior. Rounded corners,</p>	

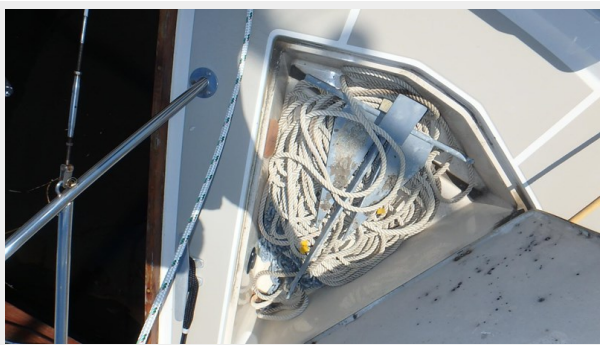
P6081378



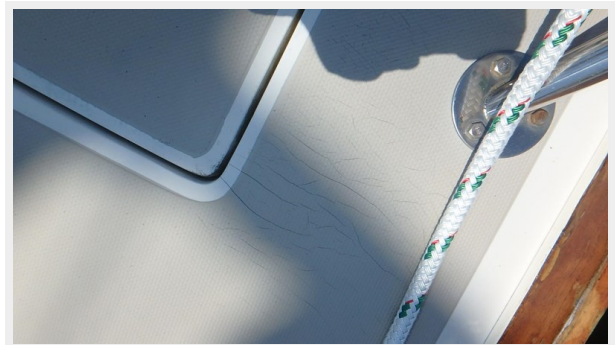
P6081379



P6081380



P6081381



P6081382



P6081383



P6081384



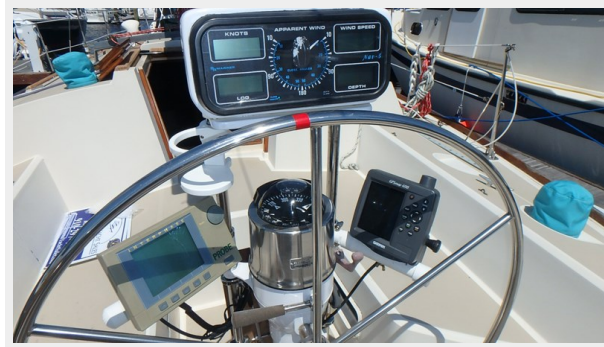
P6081385



P6081386



P6081387



P6081388



P6081389



P6081390



P6081391



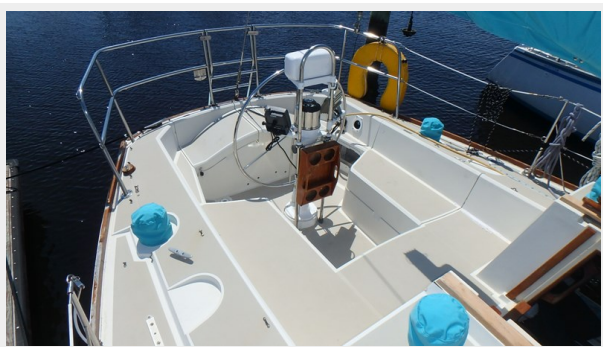
P6081392



P6081393



P6081394



P6081395



P6081396



P6081397



P6081399



P6081317



P6081315



P6081318



P6081319



КОНТАКТЫ

Андрей Шестаков (Andrey Shestakov) – ведущий яхтенный брокер отдела продаж яхт и судов компании Shestakov Yacht Sales Inc. Официальный представитель Shestakov Yacht Sales Inc. для русскоговорящих клиентов в центральном офисе компании в Майами/Форт Лодердейл/Флорида/США.

Контактная информация

Email: andrey@shestakovyachtsales.com

Web: shestakovyachtsales.com

Телефоны

Краснодарский край: **+7(918)465-66-44**

США, Майами, Флорида: **+1(954)274-4435**

Время работы

Понедельник – Суббота: **9:00 - 21:00**
EDT

Воскресенье: **Закрито**

Адрес



Harbour Towne Marina, 850 NE 3rd St,
STE 213, Dania, FL 33004