

## NO NAME — ALASKAN



**Судостроитель:** ALASKAN

**Длина общая:** 88' 0" (26.82m)

**Год постройки:** 2007

**Модель:** Моторная яхта

**Цена:** **ЦЕНА ЯХТЫ ПО ЗАПРОСУ**

**Местонахождение:** Canada

Купить **No Name — ALASKAN** а также выбрать подходящую вам яхту из нашего каталога яхт вам поможет опытный яхтенный брокер Андрей Шестаков. На сегодняшний день компания **Shestakov Yacht Sales Inc.** имеет большое количество яхт в собственном списке продаж, а также тесно сотрудничает со всеми крупными яхтенными производителями по всему миру.

Для того чтобы купить яхту **No Name — ALASKAN** а также проконсультироваться по любому вопросу связанному с покупкой, продажей, чартером яхт позвоните по телефону **+7(918)465-66-44**.

# ОГЛАВЛЕНИЕ

ОГЛАВЛЕНИЕ	2
ХАРАКТЕРИСТИКИ	5
Основная информация	5
Размеры	5
Размещение	5
Корпус и палуба	5
Информация о двигателе	5
ПОДРОБНОЕ ОПИСАНИЕ	6
Accommodations & Layout	6
Galley & Domestic	7
Electronics & Navigation	8
Electrical	8
Deck Equipment	9
Engines & Mechanical	9
Exclusions	10
DISCLAIMER	10
Исключения	10
Отказ от ответственности	10
ФОТОГРАФИИ	11
Screen Shot 2020-07-13 at 1.20.15 PM	11
Screen Shot 2020-07-13 at 1.20.10 PM	11
Screen Shot 2020-07-13 at 1.20.20 PM	11
Screen Shot 2020-07-13 at 1.20.29 PM	11
Screen Shot 2020-07-13 at 1.20.34 PM	12
Screen Shot 2020-07-13 at 1.20.39 PM	12
Screen Shot 2020-07-13 at 1.20.46 PM	12
Screen Shot 2020-07-13 at 1.21.52 PM	12
Screen Shot 2020-07-13 at 1.21.39 PM	13

Screen Shot 2020-07-13 at 1.21.46 PM	13
Screen Shot 2020-07-13 at 1.22.51 PM	13
Screen Shot 2020-07-13 at 1.22.34 PM	13
Screen Shot 2020-07-13 at 1.20.59 PM	13
Screen Shot 2020-07-13 at 1.20.53 PM	13
Screen Shot 2020-07-13 at 1.21.04 PM	14
Screen Shot 2020-07-13 at 1.21.09 PM	14
Screen Shot 2020-07-13 at 1.21.20 PM	14
Screen Shot 2020-07-13 at 1.21.14 PM	14
Screen Shot 2020-07-13 at 1.21.33 PM	15
Screen Shot 2020-07-13 at 1.21.26 PM	15
Screen Shot 2020-07-13 at 1.21.59 PM	15
Screen Shot 2020-07-13 at 1.22.05 PM	15
Screen Shot 2020-07-13 at 1.22.11 PM	15
Screen Shot 2020-07-13 at 1.22.19 PM	15
Screen Shot 2020-07-13 at 1.23.03 PM	16
Screen Shot 2020-07-13 at 1.22.57 PM	16
Screen Shot 2020-07-13 at 1.23.08 PM	16
Screen Shot 2020-07-13 at 1.23.14 PM	16
Screen Shot 2020-07-13 at 1.23.27 PM	16
Screen Shot 2020-07-13 at 1.23.20 PM	16
Screen Shot 2020-07-13 at 1.23.33 PM	17
Screen Shot 2020-07-13 at 1.23.38 PM	17
Screen Shot 2020-07-13 at 1.23.50 PM	17
Screen Shot 2020-07-13 at 1.23.44 PM	17
Screen Shot 2020-07-13 at 1.23.56 PM	18
Screen Shot 2020-07-13 at 1.24.02 PM	18
Screen Shot 2020-07-13 at 1.24.09 PM	18
КОНТАКТЫ	19

Контактная информация	19
Телефоны	19
Время работы	19
Адрес	19

# ХАРАКТЕРИСТИКИ

## Основная информация

Тип судна: Моторная яхта	Модельный год: 2007
Год постройки: 2007	Страна: Canada

## Размеры

Длина общая: 88' 0" (26.82m)

## Размещение

Всего кают: 5

## Корпус и палуба

Материал корпуса: Fiberglass

## Информация о двигателе

Двигатели: 2	Производитель: Caterpillar
Модель: C18	Тип двигателя: Inboard
Тип топлива: Diesel	

# ПОДРОБНОЕ ОПИСАНИЕ

## Accommodations & Layout

-----PRELIMINARY SPECIFICATIONS ONLY-----

Sleeps up to 8 owners/guests in four all-ensuite double staterooms plus versatile crew/extra guest quarters for a total of 8-10 overnight berths; (5) enclosed heads with separate stall showers and 1 day head. LAYOUT FROM FORWARD: Chain locker is followed by the FORWARD 'VIP' GUEST STATEROOM featuring an island queen berth on centerline with storage below; twin opening overhead skylight hatches with screens and blackout shades; dual cedar lined hanging lockers; built-in 20-inch flat screen TV with SAT receiver; overhead plus accent lighting and reading lights; privacy door aft and ENSUITE 'VIP' GUEST HEAD with shower.

Next aft in the LOWER COMPANIONWAY finds the stairway landing from abovedecks to starboard; SHIP'S LAUNDRY is concealed in a custom cabinet opposite. Following on port is the PORT GUEST STATEROOM, featuring side-by-side single berths with storage below situated athwartships; built-in 17-inch flat screen TV with SAT receiver; dual cedar-lined hanging lockers; custom sliding shoji-screen outboard to access the screened opening portlight; overhead and access lighting plus reading lamps; privacy door inboard; and ENSUITE GUEST HEAD with separate stall shower. Adjacent double BUNK STATEROOM offers over/under single berths outboard; built-in 17-inch TV with SAT receiver; overhead and accent lighting plus reading lamps; screened opening portlight; privacy door inboard; and ENSUITE GUEST HEAD with separate stall shower.

Finally aft in the lower companionway is the full width MIDSHIPS MASTER STATEROOM, featuring walk-around island king berth with custom Temperpedic pillow-top mattress and mirrored headboard; mirrored bulkhead with 37-inch flat screen TV with HD receiver; built-in settee; vanity with lit mirror; custom sliding shoji screens over opening portlights; overhead lighting plus reading lamps; privacy door forward and ENSUITE MASTER HEAD with separate stall shower. Generous storage includes hidden safe with keyless operation and cedar-lined walk-in locker with passage to guest cabins.

MAIN DECK LEVEL begins forward with the serious PILOTHOUSE, offering centerline MAIN HELM with mounted captain's and companion chairs, and side access doors to the PORTUGUESE BRIDGE and SIDE DECKS at both port and starboard. Very spacious L-shaped DINETTE follows aft to port, with hi-lo table that folds out to include the captain's & companion chairs for meals with larger groups. Raised GALLEY is well placed just aft of the dining area, ideal for entertaining, full meal prep, or just grabbing a sandwich while underway!

UPPER LEVEL is accessed via starboard steps in the pilothouse up to the commanding SKYLounge, offering the best of the views along with a full UPPER HELM forward fitted with two Crown helm chairs. Aft to port is an elevated L-shaped GUEST SETTEE with large granite topped table; bar and storage plus handy DAY HEAD with sink is built-in opposite to starboard;

overhead features dual opening skylight hatches. Aft door opens to the BOAT DECK with tender storage chocks, davit system and on-deck storage areas; molded access steps to the main deck is aft to port.

Luxuriously appointed MAIN SALON follows aft from the galley, and is centered around a warm custom fireplace forward with concealed 42-inch flat screen TV on a lift connected to an HD receiver and surround sound system. Residential sofa with companion chair and two leather recliners all offer readings lamps, end tables, and excellent views via the wrap around windows.

Double wood doors aft with phantom screens open to the ample covered AFT DECK, featuring plenty of space for a large granite-topped table and deck chairs ahead of twin polished support columns; custom stainless steel sliding overhead hatch; wing storage compartments at either side with heated cabinets; granite topped storage with sink is forward to port with adjacent molded access stairs to the boat deck above. Envious on-deck ENGINE CONTROL center is concealed at the starboard side. Access to either of the safe and wide side decks is forward; Euro-style curved staircases aft are at either side to access the oversized SWIM STEP and Freeman watertight door to the LAZARETTE, CREW QUARTERS and ENGINE ROOM.

CREW area is richly appointed and may be used as an extra guest stateroom when needed, offering a double berth with storage below (houses the two spare props); head with sink, storage and stall shower with etched glass door; countertop with sink, microwave oven & fridge; hanging locker; climate control and 14-inch TV with SAT receiver. Large storage and WORK ROOM is to starboard with bench.

## Galley & Domestic

A true 'Chef's delight', the sunny UP GALLEY was designed with a very large U-shaped working area with plenty of room for the gatherings that always seem to happen around meal preparation! The beautiful and durable marble counter tops, double stainless sinks and excellent lighting provide a wonderful living and entertaining space, including marble-topped cabinetry to starboard as another bar area with additional freezers mounted below. Excellent stowage spaces are augmented by a large pantry for additional wares and stores.

Full equipment includes:

- Sub Zero refrigerator with freezer
- Asko dishwasher
- 30" Wolf LPG galley range with oven - Propane
- Dacor microwave oven
- Braun trash compactor
- U-Line ice maker
- In-Sinkerator garbage disposal
- Seagull water purification system
- In-line exhaust fan

- A/C control
- Lights on dimmers plus accent lighting at galley sole
- 30" Propane stainless steel BBQ

## Electronics & Navigation

---

- (3) Onboard computer with NOBELTEC and WX Works software
- Nobeltec black box radars 6k and 12k
- Nobeltec plotters
- AP 50 Autopilot
- (3) 17" display panels in pilothouse
- (2) 17" and (1) 10" display repeaters in skylounge
- (2) Icom VHF radios plus (4) slave Uniden hand helds (at master, crew, PH and skylounge for use as additional communication for tender and docking)
- (2) Danforth 5-inch compasses
- HP photo smart printer fax and copier wireless
- CCTV camera system w/4 channel multiplexer (3 engine room and 1 aft deck color cameras)
- Simrad CE 30/32 SDCR depth and temp Simrad CA 34 GPS/chart plotter/echo sounder w/7" display
- Simrad DS 54 station with sun view, 10" monitor
- (5) Simrad IS 15 combo displays Simrad IS 15 wind speed and direction
- KVH TracPhone 252 mini
- KVH Tracvision G-6 dedicated satellite system for (8) TV's
- C-Phone 8-station PBX to satellite system
- Cellular repeater antenna External WiFi antenna for internet connection

## Electrical

---

- 12v and 24v DC systems plus 120v and 220v AC systems with panels and fuse/circuit breaker protection;
- (4) engine starting batteries,
- (2) genset batteries, and (24) 12v AGM batteries in house/inverter bank LIFELINE 8D.
- (2) Trace 4 KW inverters with 120 amp built-in charger;
- (1) Sentry 80 amp 24 volt charger; (1) Sentry 50 amp 12 volt for generators;
- (1) 40 amp 24 Volt DC to 12 Volt DC converter for electronics;
- (2) 200-amp 24v alternators on main engines; 2x80 amp spare alternators;
- (2) 25 KW Northern Lights generators with sound shields (one with auto start);
- (2) 50-amp 100' hook-up cables with Glendinning Cable Master systems at the stern on remote keys; (2) 50-amp loose cords for bow connections; (1) Wards Marine auto 100-amp cord combiner with phase selector; (1) 100 amp isolation transformer with voltage booster.



## Deck Equipment

---

DECKS are easy care fiberglass with non-skid forward and in the spacious FISH-DIVE COCKPIT, with TEAK sole at the aft deck and stair step facings; all decks have water collector runs that drain to the waterline. Stainless safety rails and stanchions hinged where needed for access; boarding doors port and starboard; triple Kahlenberg air horns; international navigation lights; deck flood lights; aft deck lighting with dimmers.

Fish Dive cockpit can be accessed from either side of the covered aft deck, is complete with fuel tank, pump and hose for servicing the tender on the water, it includes a live bait tank with a deck washdown, large fish box that can be iced if needed, it has dedicated storage for the fighting chair, the outriggers, the propane crab cooker and large crab pot, there is built in fishing tackle storage, plus it has become the spot for sunbathing, a custom made tow bridal and tow line for towing the scout, it has a transom door for landing large fish or accessing the swim platform.

Integrated SWIM PLATFORM includes a built-in swim ladder and pop-up cleats for tender; removable transom staples access to and from the tender ; Portuguese bridge with storage and seating areas forward; deck storage lockers are heated; forward connections shore power, phone, TV and water. Cushions are covered in Sunbrella fabrics; aft deck overhead rod holders; aft deck camera. GROUND TACKLE includes Bruce-type Plow 178-lb. main anchor with 455' of 1/2-inch chain; CQR 110-lb. secondary anchor on 350' of 1/2-inch chain; (2) Maxwell 4500VWC hydraulic anchor windlasses.

MAIN TENDER is an 18' Scout with 150-hp Yamaha 4-stroke outboard offering speeds of up to 60 knots! 50-gallon fuel tank on board; 10-gallon water tank with shower attachment; stand-up full bimini top and enclosure; Yamaha trolling motor; fish tank; ski tow; VHF radio, GPS, and digital depth sounder; knot meter & tachometer; 12v receptacle; swim ladder; bilge pump, battery switch & charger; towing eye; lockers for lines, fenders, anchor, lifejackets & first aid kit. DAVIT is a Steelhead 2500CT hydraulic system capable of launching tender on the port or starboard side, plus at the stern.

## Engines & Mechanical

---

ENGINES are twin Caterpillar C-18 diesels 1015-hp with CONTROL STATIONS at pilothouse and skylounge helms plus hand held REMOTE with bow and stern thruster function; twin hydraulic assisted power steering; Simrad rudder control. Naiad 12-sq.ft. fin STABILIZERS with datum controller; Key Power 48-hp hydraulic bow thruster; Key Power 38-hp hydraulic stern thruster; ZF IRM 350A transmissions 2.6:1 ratio with hydraulic pumps mounted on each for thrusters and stabilizers; dual Racor 1000 fuel filtration for mains and gensets with fuel transfer and polish system. SHAFTS are 3-inch stainless with 2 spares; dripless shaft seals; Nibral 5-bladed props (plus spares); underwater exhaust; engine-driven "crash pump" on starboard engine; oil change system (7 zones) with one each 50-gallon new & used oil tanks. SeaFire 6-zone fire control system with auto shut-downs; twin stainless steel sea chests with sight glass.

Marine Air chilled water AIR CONDITIONING system is (2) units for 90,000-BTU's total with soft start frequency driver for compressors. CABIN HEAT is via Olympia 7-zone diesel furnace with circulating hot water; (2) 20-gallon Rartian hot water heaters, (2) heat exchangers, diesel furnace engine heat and electric. Village Marine 1200-GPD water maker system includes auto freshwater flush and auto fill plus shutoff, remote control at the helm, and UV filtration. HEADS are freshwater Tecma (6) with Headhunter MSD treatment system; Headhunter freshwater pressure pumps include (1) each AC and DC with additional filtration system in the galley.

ALSO NOTE: (3) engine room cameras; custom built stainless steel shelves above the two gensets; freshwater faucet and hose on retractable reel.

---

## Exclusions

Any of owners' personal items left on board, including any items not listed in the specifications, are not included with the sale of the vessel. \*\*\*NOT FOR SALE TO U.S. CITIZENS WHILE IN U.S. WATERS. CALL FOR DETAILS.\*\*\*

---

## DISCLAIMER

The Company offers the details of this vessel in good faith but cannot guarantee or warrant the accuracy of this information nor warrant the condition of the vessel. A buyer should instruct his agents, or his surveyors, to investigate such details as the buyer desires validated. Hours listed may vary from actual hours due to recent use. Purchaser is encouraged to verify hours prior to purchase. This vessel is offered subject to prior sale, price change, or withdrawal without notice.

---

## Исключения

При продаже яхты исключаются личные вещи владельца.

---

## Отказ от ответственности

Компания предоставляет описание судна или яхты добросовестно, но не может гарантировать точность этой информации, а также не ручается за техническое состояние. Покупатель должен проинструктировать своих агентов или оценщиков исследовать представленную информацию более подробно, по собственному желанию. Продажа судна или яхты, изменение цены или снятие с продажи будет происходить без предварительного уведомления.

## ФОТОГРАФИИ

Screen Shot 2020-07-13 at 1.20.10 PM



Screen Shot 2020-07-13 at 1.20.15 PM



Screen Shot 2020-07-13 at 1.20.20 PM



Screen Shot 2020-07-13 at 1.20.29 PM



Screen Shot 2020-07-13 at 1.20.34 PM



Screen Shot 2020-07-13 at 1.20.39 PM



Screen Shot 2020-07-13 at 1.20.46 PM



Screen Shot 2020-07-13 at 1.21.52 PM





Screen Shot 2020-07-13 at 1.21.39 PM



Screen Shot 2020-07-13 at 1.21.46 PM



Screen Shot 2020-07-13 at 1.22.51 PM



Screen Shot 2020-07-13 at 1.22.34 PM



Screen Shot 2020-07-13 at 1.20.53 PM



Screen Shot 2020-07-13 at 1.20.59 PM



Screen Shot 2020-07-13 at 1.21.04 PM



Screen Shot 2020-07-13 at 1.21.09 PM



Screen Shot 2020-07-13 at 1.21.20 PM

Screen Shot 2020-07-13 at 1.21.14 PM





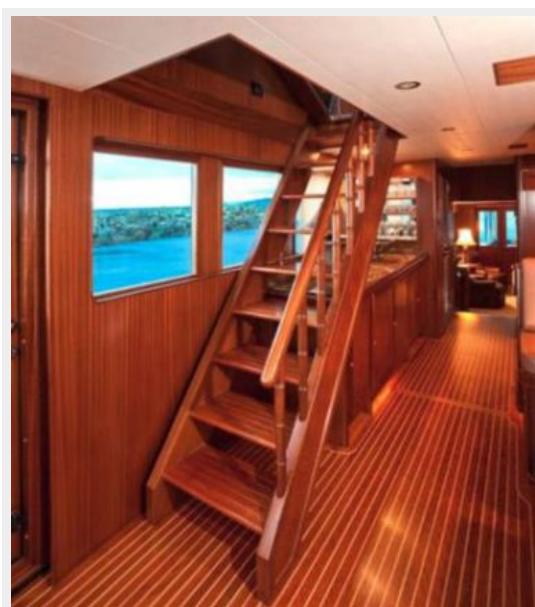
Screen Shot 2020-07-13 at 1.21.26 PM



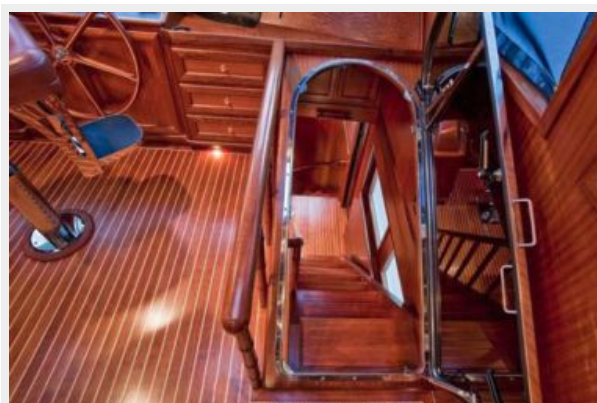
Screen Shot 2020-07-13 at 1.21.33 PM



Screen Shot 2020-07-13 at 1.21.59 PM



Screen Shot 2020-07-13 at 1.22.05 PM



Screen Shot 2020-07-13 at 1.22.11 PM



Screen Shot 2020-07-13 at 1.22.19 PM



Screen Shot 2020-07-13 at 1.22.57 PM



Screen Shot 2020-07-13 at 1.23.03 PM



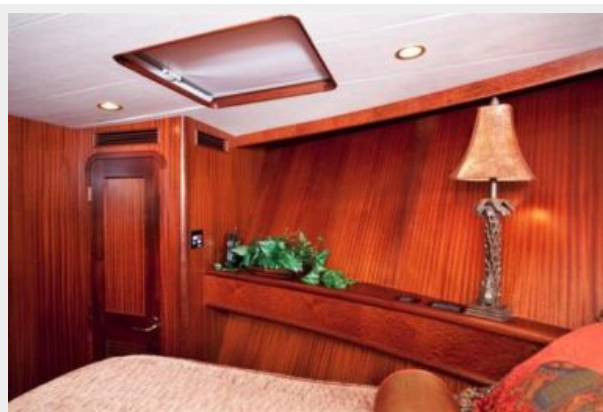
Screen Shot 2020-07-13 at 1.23.08 PM



Screen Shot 2020-07-13 at 1.23.14 PM



Screen Shot 2020-07-13 at 1.23.20 PM



Screen Shot 2020-07-13 at 1.23.27 PM





Screen Shot 2020-07-13 at 1.23.33 PM



Screen Shot 2020-07-13 at 1.23.38 PM



Screen Shot 2020-07-13 at 1.23.44 PM



Screen Shot 2020-07-13 at 1.23.50 PM



Screen Shot 2020-07-13 at 1.23.56 PM



Screen Shot 2020-07-13 at 1.24.02 PM



Screen Shot 2020-07-13 at 1.24.09 PM



# КОНТАКТЫ

---

Андрей Шестаков (Andrey Shestakov) – ведущий яхтенный брокер отдела продаж яхт и судов компании Shestakov Yacht Sales Inc. Официальный представитель Shestakov Yacht Sales Inc. для русскоговорящих клиентов в центральном офисе компании в Майами/Форт Лодердейл/Флорида/США.

## Контактная информация

---

Email: **andrey@shestakovyachtsales.com**

Web: **[shestakovyachtsales.com](http://shestakovyachtsales.com)**

## Телефоны

---

Краснодарский край: **+7(918)465-66-44**

США, Майами, Флорида: **+1(954)274-4435**

## Время работы

---

Понедельник – Суббота: **9:00 - 21:00**  
EDT

Воскресенье: **Закрито**

## Адрес

---



Harbour Towne Marina, 850 NE 3rd St,  
STE 213, Dania, FL 33004