

## TOUCH AND GO — CHERUBINI



**Builder:** CHERUBINI

**Year Built:** 2000

**Model:** Motor Yacht

**Price:** PRICE ON APPLICATION

**LOA:** 50' (15.24m)

**Beam:** 14

**Max Draft:** 5' (1.52m)

**Cruise Speed:** 9 Knots Kts. (10 MPH)

**Max Speed:** 16 Knots Kts. (18 MPH)

Our experienced yacht broker, Andrey Shestakov, will help you choose and buy a yacht that best suits your needs **Touch and Go — CHERUBINI** from our catalogue. Presently, at **Shestakov Yacht Sales Inc.**, we have a wide variety of yachts available on our sale's list. We also work in close contact with all the big **yacht manufacturers** from all over the world.

If you would like to buy a yacht **Touch and Go — CHERUBINI** or would like help answering any questions concerning purchasing, selling or chartering a yacht, please call **+1(954)274-4435**

# TABLE OF CONTENTS

TABLE OF CONTENTS	2
SPECIFICATIONS	5
Overview	5
Basic Information	5
Dimensions	5
Speed, Capacities and Weight	6
Accommodations	6
Hull and Deck Information	6
Engine Information	6
PHOTOS	7
DSC_4576	7
Port Bow	7
Bow	7
Starboard Bow	7
Starboard Side	8
Starboard #2	8
Starboard Profile	8
Starboard Corner	8
Port Corner	8
Port Profile	8
Facing Aft	9
Pilothouse	9
Bridge Helm	9
Bow	9
2 - 1	9
2 - 12	9
Boat-June2007_003	10
2 - 15	10

---

DSC_4577	10
DSC_4579	10
DSC_4578	10
Anchor Windlass	10
Windlass #2	11
Cockpit	11
Cockpit To Starboard	11
Salon	11
Salon Office	11
Office #2	11
Salon To Starboard	12
Salon To Port	12
Dinette	12
Galley 1	12
Galley 2	12
Dishwasher	12
Washer Dryer	13
To Pilothouse	13
Pilothouse View	13
Convertible PH Seating	13
Helm	13
PH Overhead	13
Overhead AC DC Panels	14
To Staterooms	14
Master 1	14
Master 2	14
Master 3	14
Master Head Compartment	14
Master Head	15

---

---

Master Shower	15
Master Vanity	15
VIP Stateroom	15
VIP #2	15
Guest Head	15
DSC_0029	16
DSC_0022	16
Salon Engine Access Panels	16
Salon Access 2	16
DSC_0030	16
DSC_0031	16
DSC_0032	17
DSC_0024	17
DSC_0025	17
DSC_0026	17
DSC_0027	17
DSC_0028	17
DSC_0033	18
DSC_0035	18
DSC_0036	18
CONTACTS	19
Contact details	19
Telephones	19
Office hours	19
Address	19

---

# SPECIFICATIONS

---

## Overview

---

### Price Reduction!

Custom built to exacting standards with a lineage that traces to the renowned Hans Christian sailing yachts and the Cherubini ketches and schooners, the **Cherubini Independence** offers a solid and extremely rugged design with the dramatic flair of a North Sea workboat coupled with great craftsmanship and the beauty of a luxury cruiser. This is one handsome vessel!

A true Pilothouse design built by a company with generations of boat building experience, each **Cherubini Independence** was custom built for their original owners so no two are exactly the same. This boat was fitted with extra fuel capacity and has upgraded aluminum framed windows and secure pilothouse doors for example, along with a whirlpool tub and custom cabinetry. The Pilothouse has the look and feel of a true ocean-going vessel capable of safely handling whatever you encounter!

Powered by twin Cummins 6BTA diesels rated at 370 HP each, her equipment list is quite long, 10kW Northern Lights Generator, Wesmar Stabilizers, 24 VDC Bow Thruster, 400 GPD Watermaker, Spare Propellers and Shaft for starters.

She has benefitted from knowledgeable owners who have cruised the east coast of the US and the Caribbean in her regularly. She sits ready to take you and your crew on new adventures!

## Basic Information

---

**Category:** Motor Yacht

**Sub Category:** Pilothouse

**Model Year:** 2000

**Year Built:** 2000

## Dimensions

---

**LOA:** 50' (15.24mm)

**LWL:** 40' (12.19mm)

**Beam:** 14

**Max Draft:** 5' (1.52mm)

---

## Speed, Capacities and Weight

---

**Cruise Speed:** 9 Knots Kts. (10 MPH)    **Max Speed:** 16 Knots Kts. (18 MPH)

**Water Capacity:** 350 Gallons

**Fuel Capacity:** 1050 Gal Gallons

---

## Accommodations

---

**Total Cabins:** 2

**Total Heads:** 2

---

## Hull and Deck Information

---

**Hull Material:** Fiberglass

**Deck Material:** Fiberglass

---

## Engine Information

---

**Engines:** 2

**Manufacturer:** Cummins

**Engine Type:** Inboard

**Fuel Type:** Diesel

# PHOTOS

**DSC\_4576**



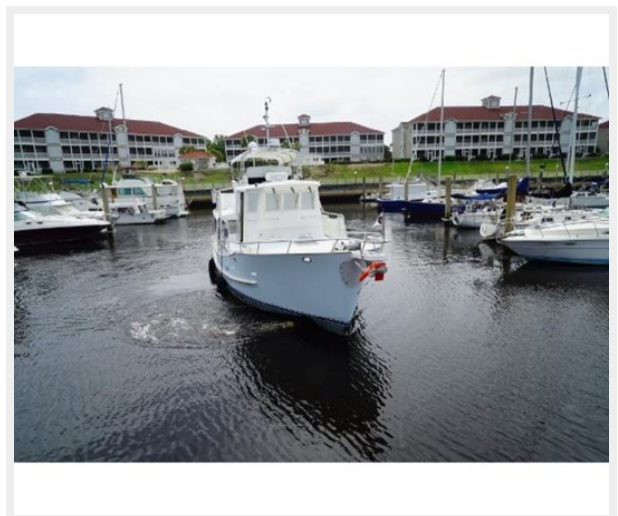
**Port Bow**



**Bow**



**Starboard Bow**



**Starboard Side**



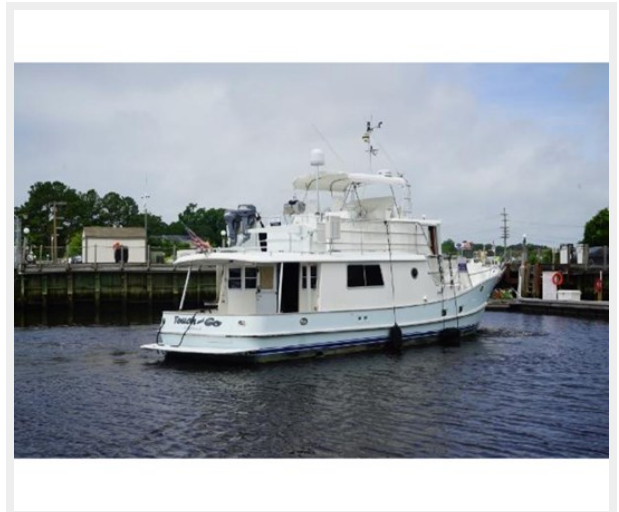
**Starboard #2**



**Starboard Profile**



**Starboard Corner**



**Port Corner**



**Port Profile**





**Facing Aft**



**Pilothouse**



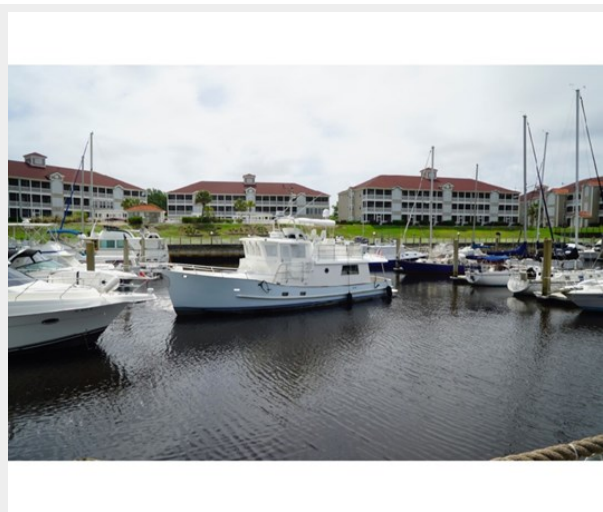
**Bridge Helm**



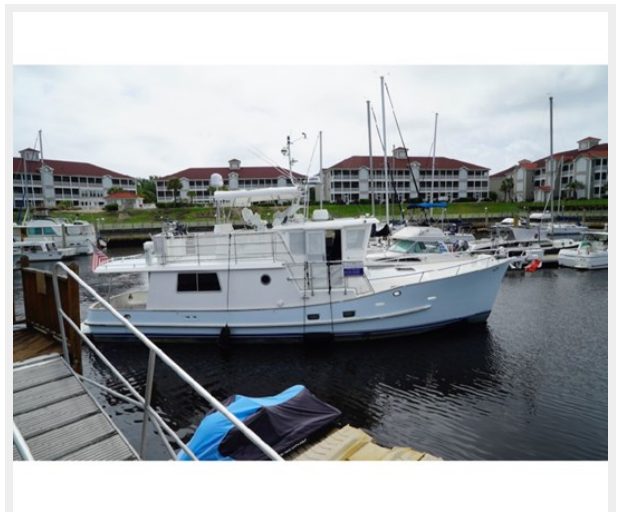
**Bow**



**2 - 1**



**2 - 12**



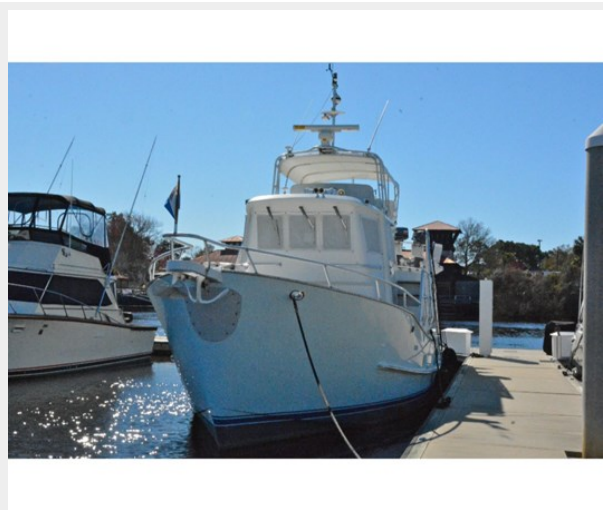
**Boat-June2007\_003**



**2 - 15**



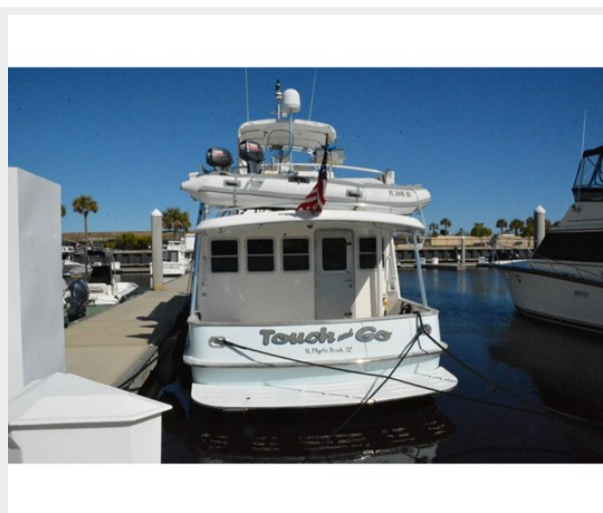
**DSC\_4577**



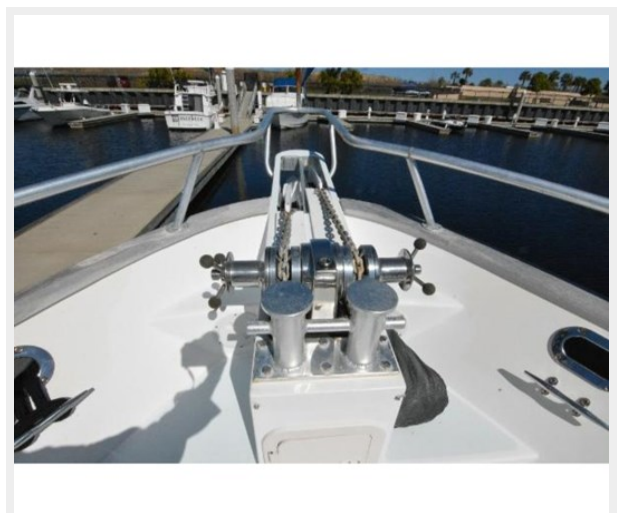
**DSC\_4579**



**DSC\_4578**



**Anchor Windlass**



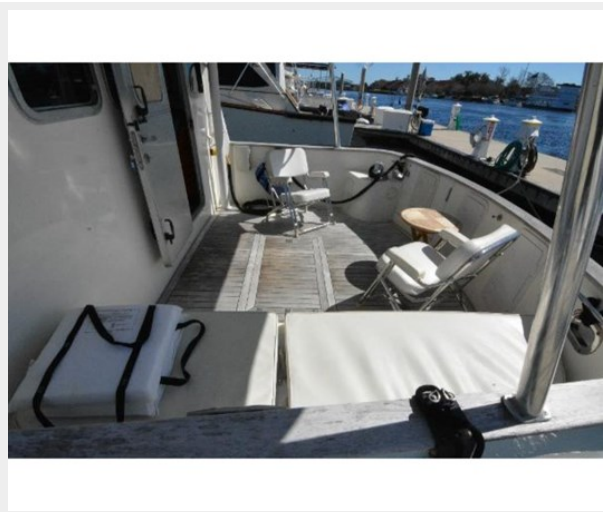
**Windlass #2**



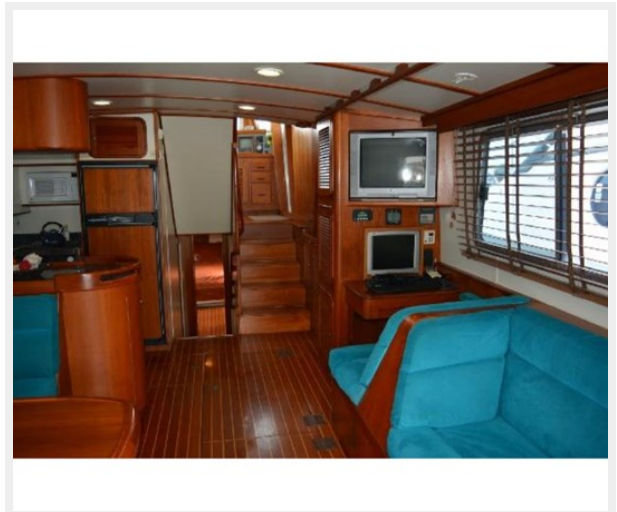
**Cockpit**



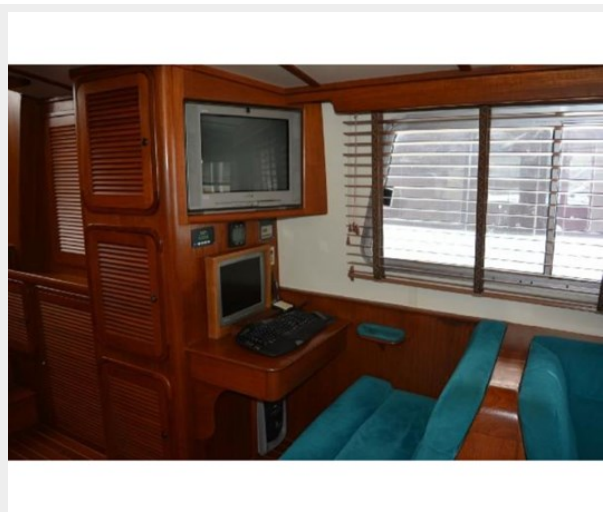
**Cockpit To Starboard**



**Salon**



**Salon Office**



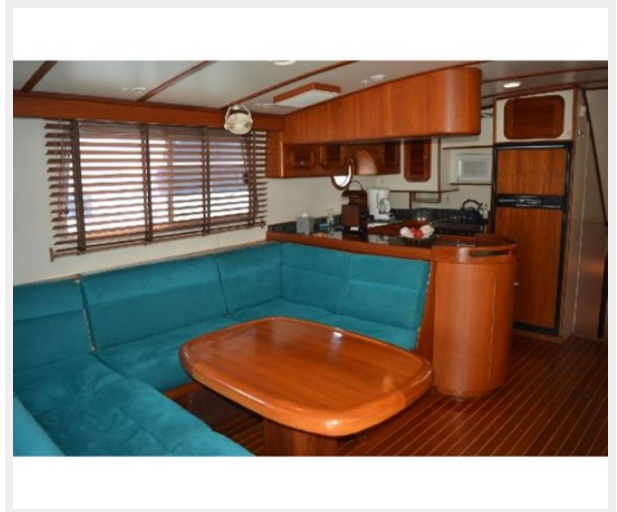
**Office #2**



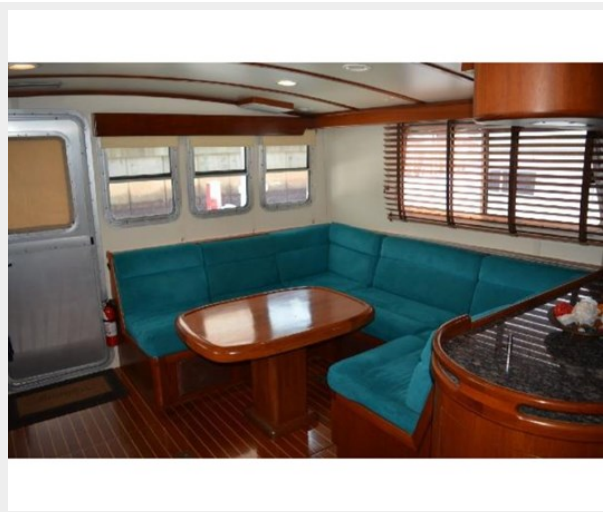
**Salon To Starboard**



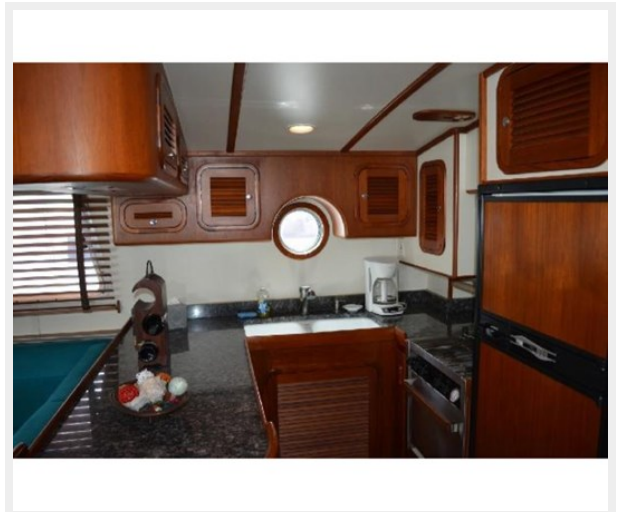
**Salon To Port**



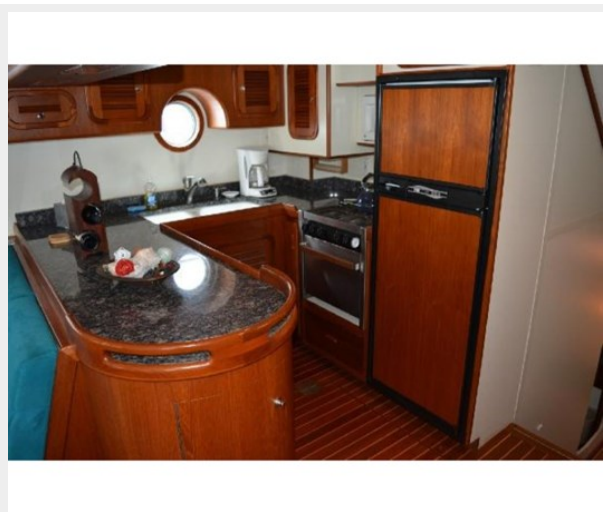
**Dinette**



**Galley 1**



**Galley 2**



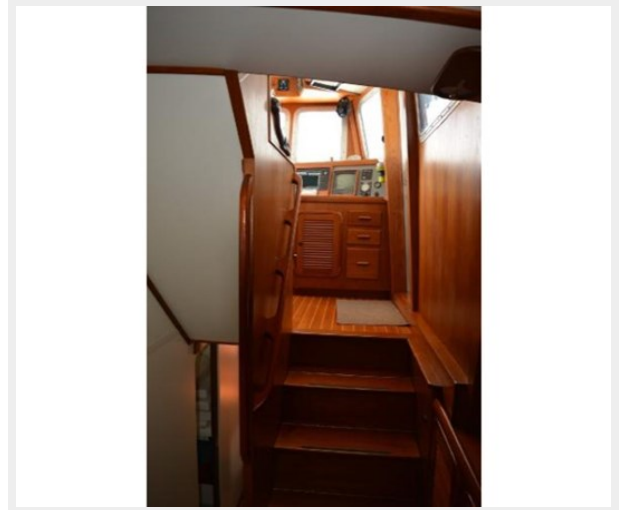
**Dishwasher**



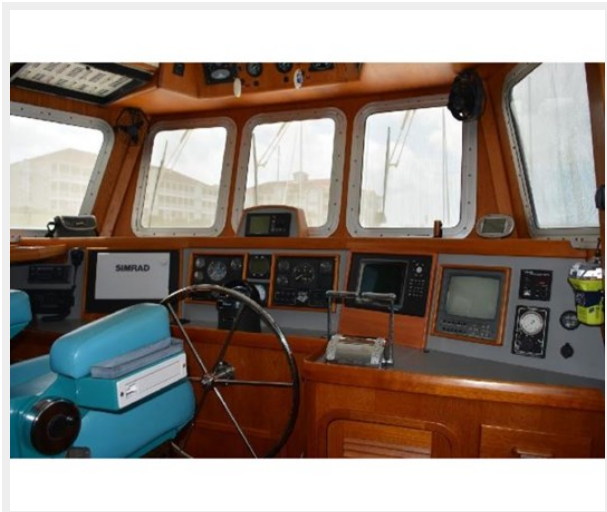
**Washer Dryer**



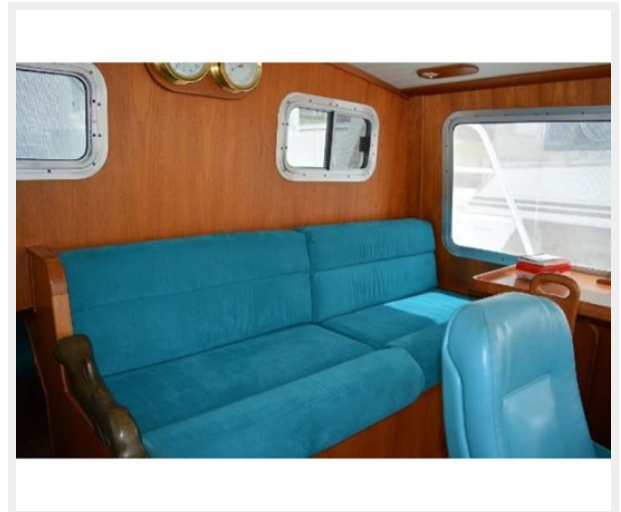
**To Pilothouse**



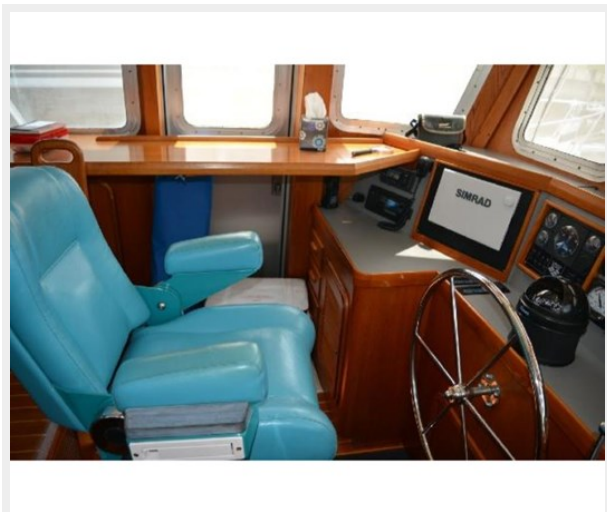
**Pilothouse View**



**Convertible PH Seating**



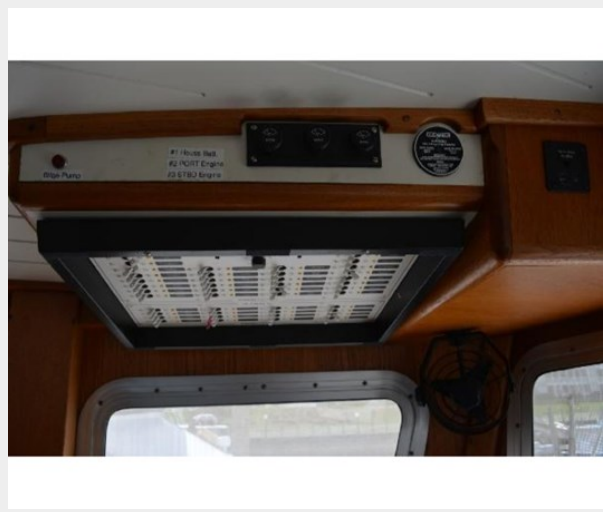
**Helm**



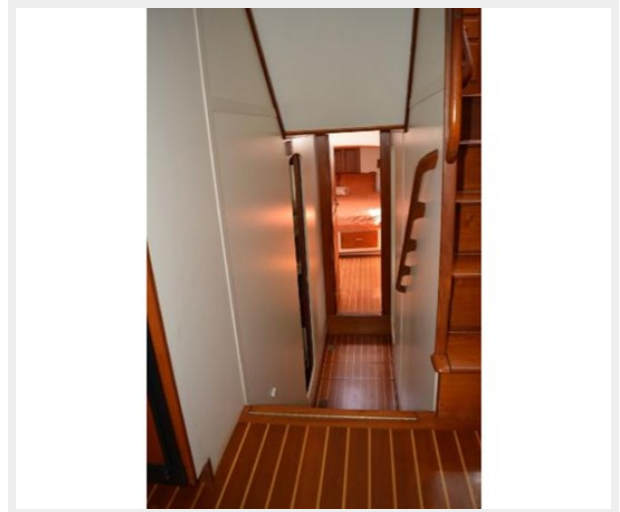
**PH Overhead**



### Overhead AC DC Panels



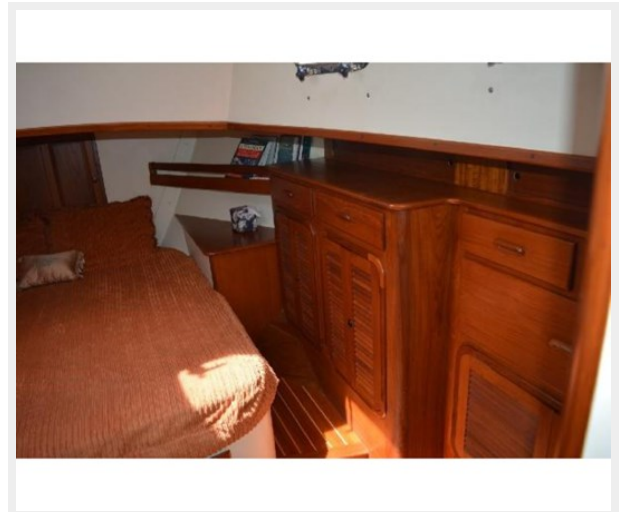
### To Staterooms



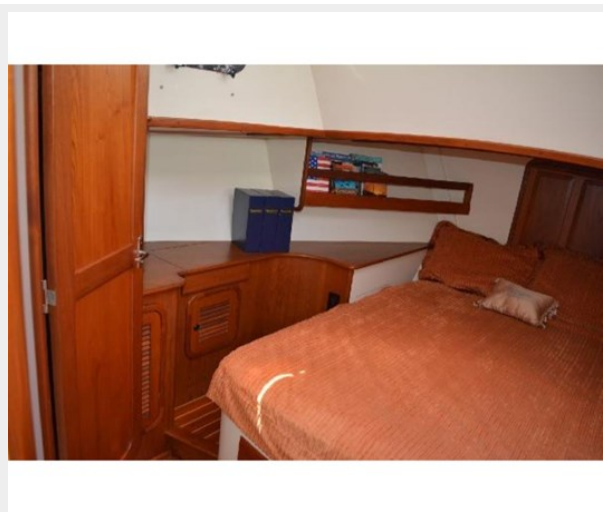
### Master 1



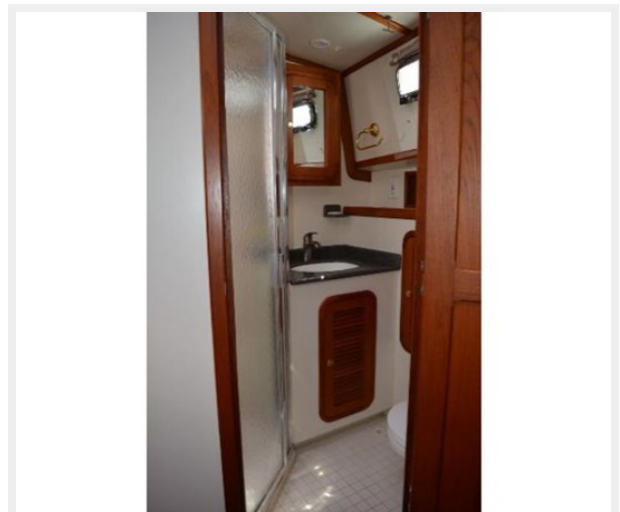
### Master 2



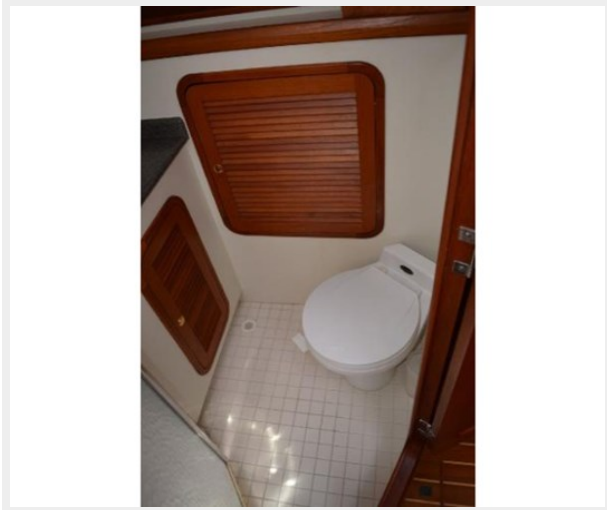
### Master 3



### Master Head Compartment



**Master Head**



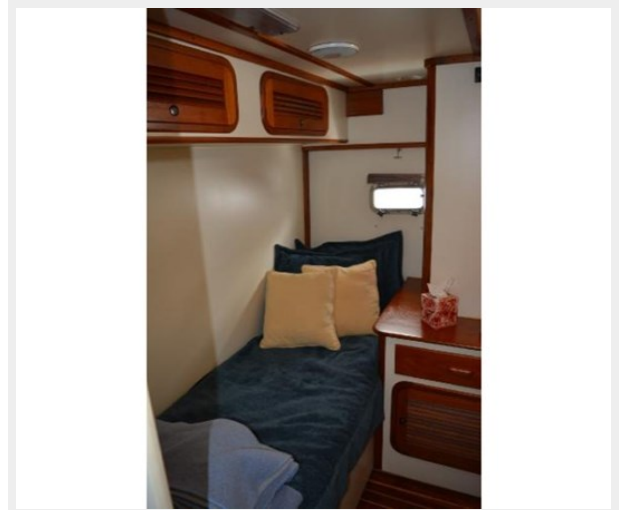
**Master Shower**



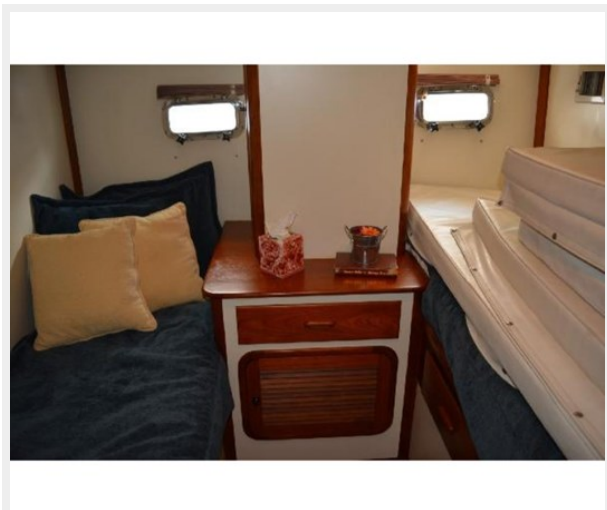
**Master Vanity**



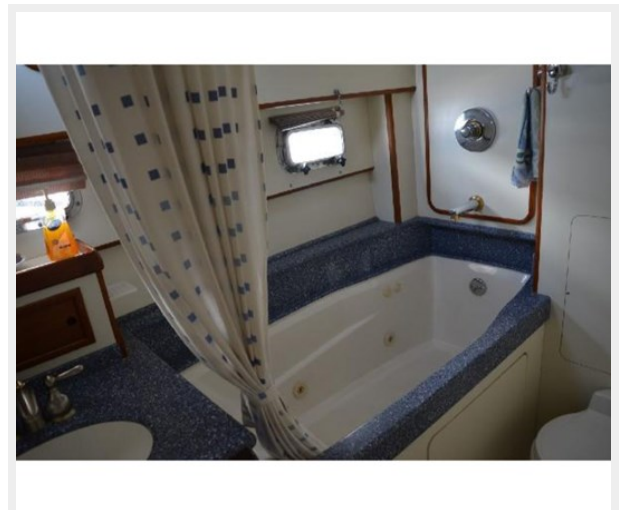
**VIP Stateroom**



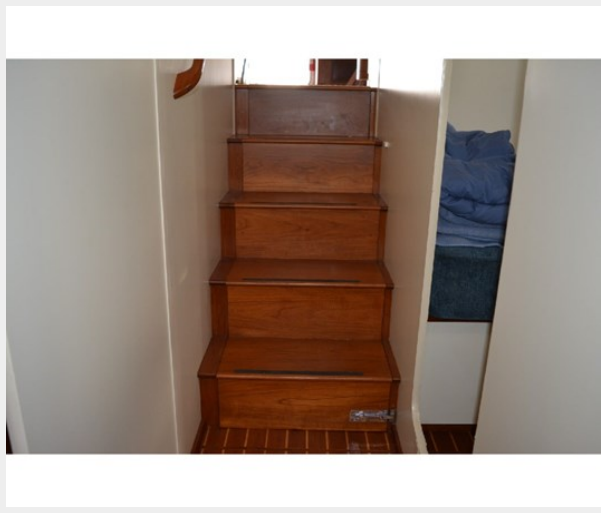
**VIP #2**



**Guest Head**



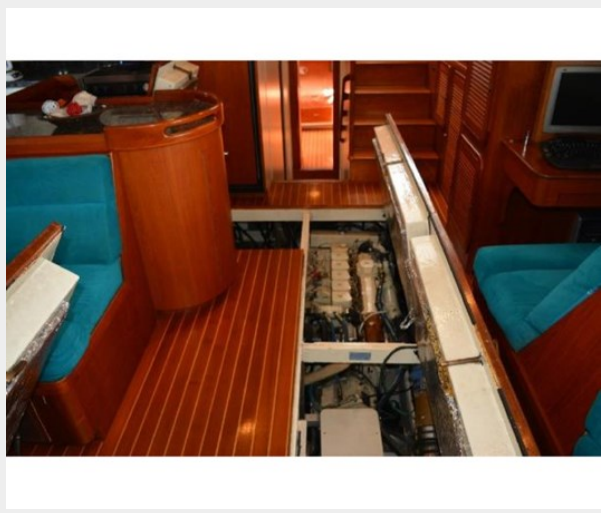
**DSC\_0029**



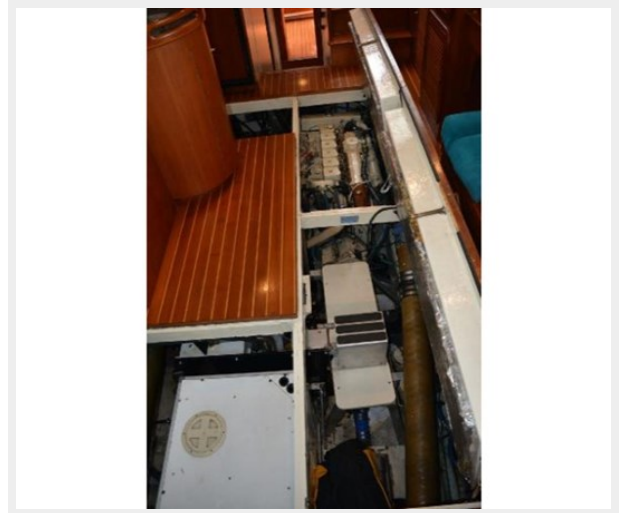
**DSC\_0022**



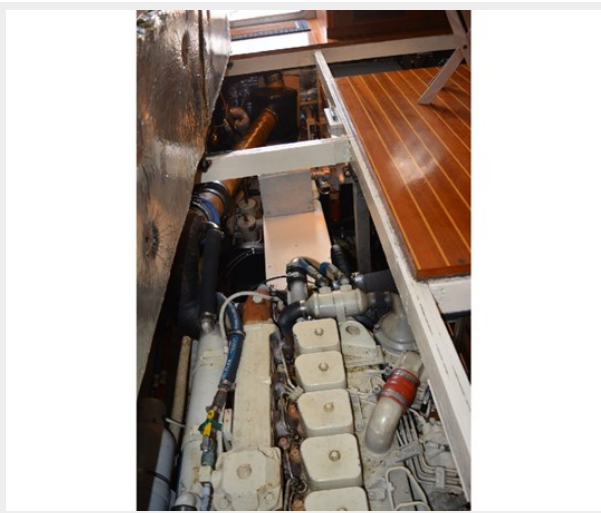
**Salon Engine Access Panels**



**Salon Access 2**



**DSC\_0030**



**DSC\_0031**

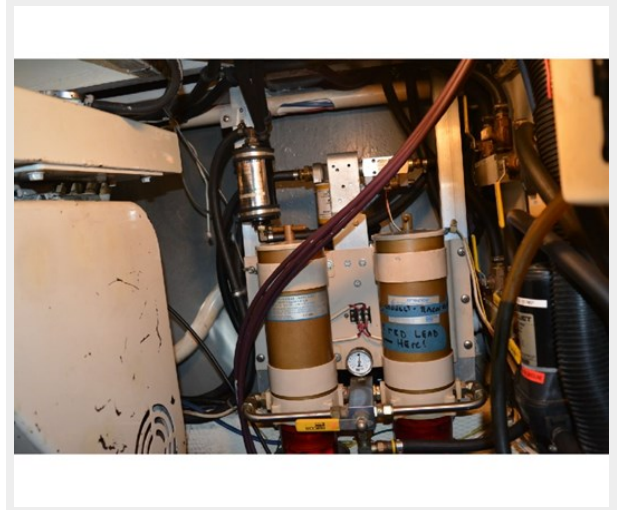




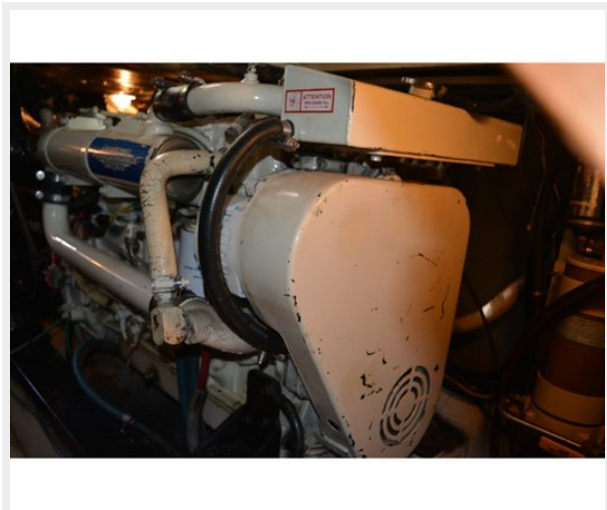
DSC\_0032



DSC\_0024



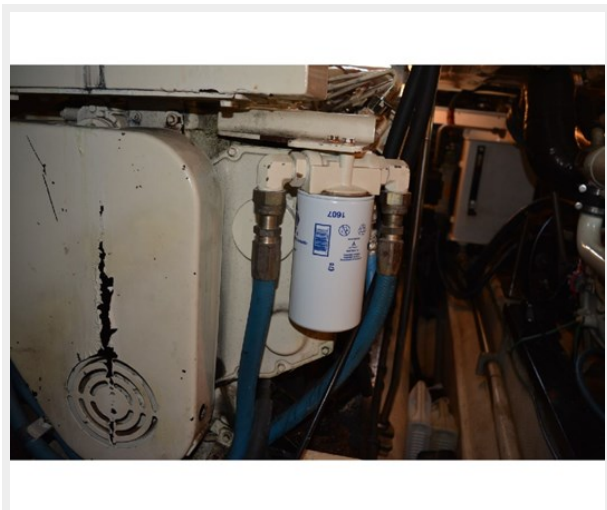
DSC\_0025



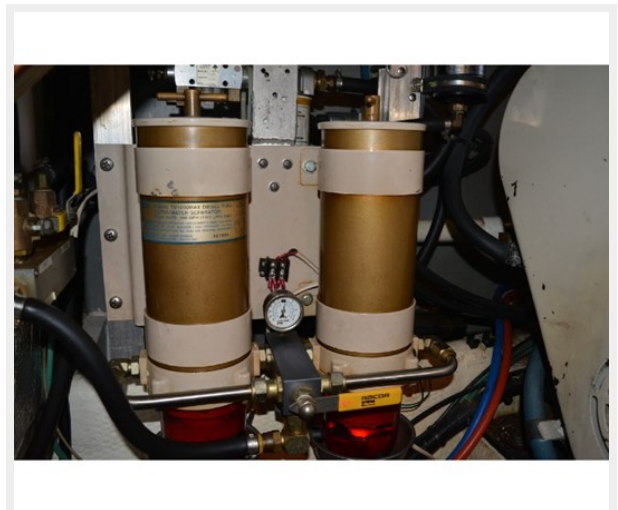
DSC\_0026



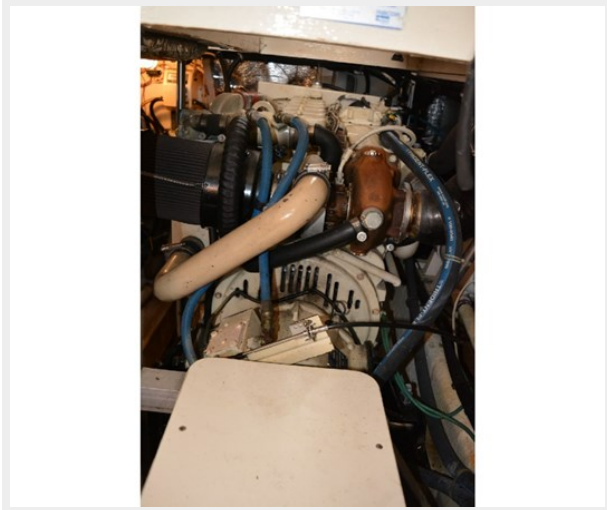
DSC\_0027



DSC\_0028



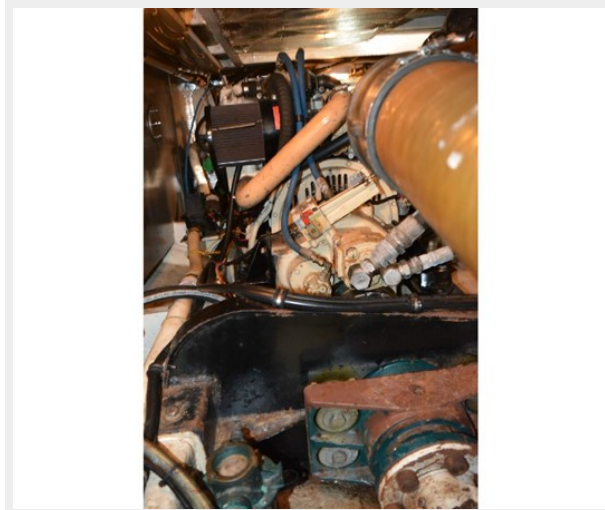
**DSC\_0033**



**DSC\_0035**



**DSC\_0036**



# CONTACTS

---

Andrey Shestakov, leading yacht broker of the sales department of Shestakov Yacht Sales Inc. Shestakov Yacht Sales Inc., the official representative of the Miami/Fort Lauderdale FL headquarters.

## Contact details

---

Email: **andrey@shestakovyachtsales.com**

Web: [shestakovyachtsales.com/en/](http://shestakovyachtsales.com/en/)

## Telephones

---

USA: **+1(954)274-4435**

## Office hours

---

Monday – Saturday: **9:00 - 21:00** EDT

Sunday: **closed**

## Address

---



Harbour Towne Marina, 850 NE 3rd St, STE 213, Dania, FL 33004